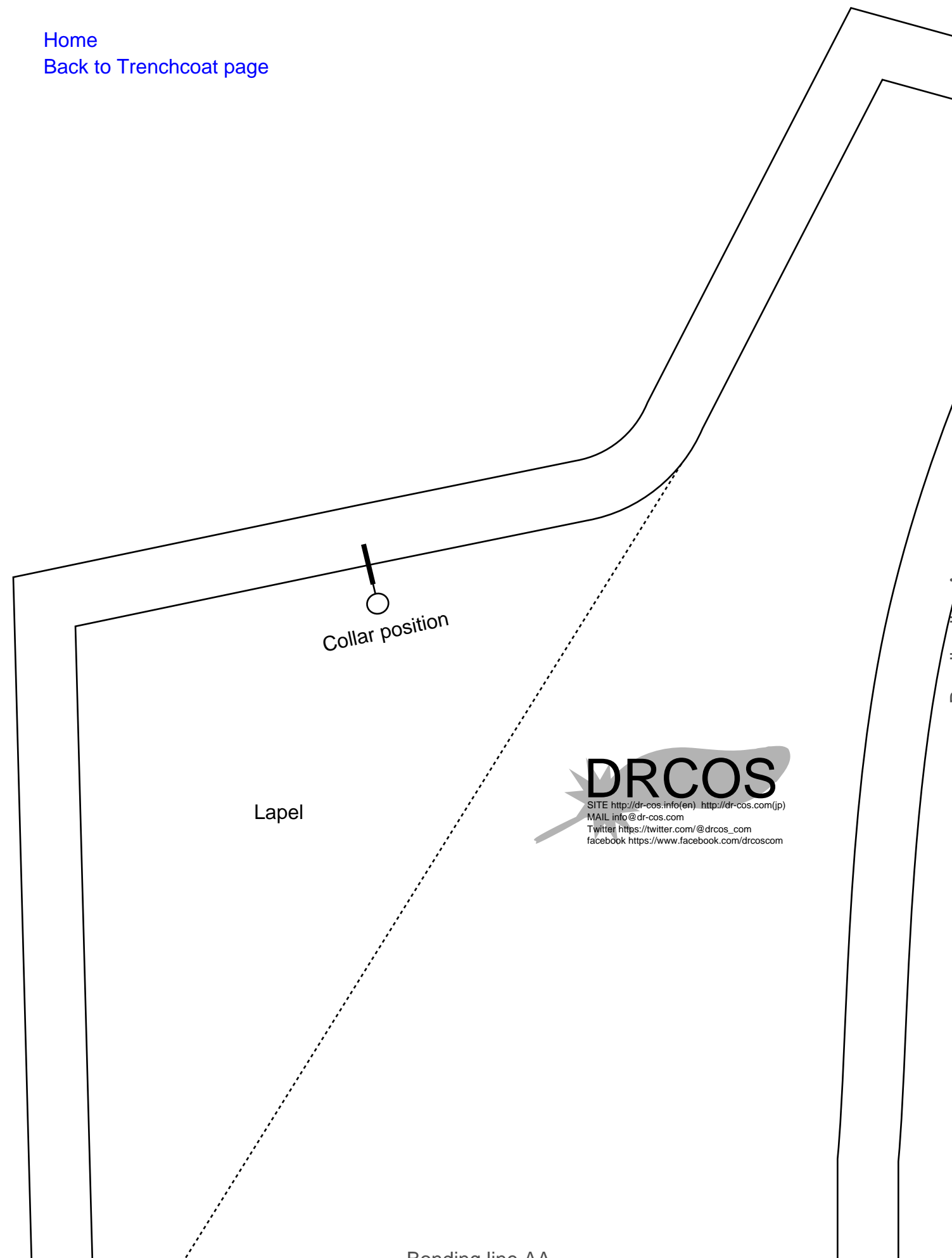


[Home](#)
[Back to Trenchcoat page](#)



Collar position

Lapel

The diagram shows a technical pattern for a trenchcoat. It features a large, irregular shape representing the main body of the coat, with a curved collar and a lapel. A dashed line labeled 'Bonding line AA' runs diagonally across the pattern. A small circle with a vertical line above it is labeled 'Collar position'. The word 'Lapel' is written in the lower-left area of the pattern.

DRCOS

SITE [http://dr-cos.info\(en\)](http://dr-cos.info(en)) [http://dr-cos.com\(jp\)](http://dr-cos.com(jp))
MAIL info@dr-cos.com
Twitter [@drcos_com](https://twitter.com/@drcos_com)
facebook <https://www.facebook.com/drcoscom>

Bonding line AA

Bonding line Aa

Bonding line AA

Bonding line Ba

Children's size 10

Trenchcoat
Front body facing
two sheets

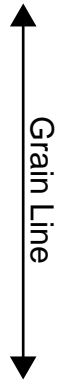
Flexible interlining

Front body facing
two sheets
Fusible interlining
two sheets

Bonding line AB

Bonding line AC

Bonding line Ca



Bonding line AC

Seam allowance 1/2in.

Bonding line Da

Seam allowance 1/2in.

Trenchcoat
Collar
two sheets
fusible interlining
one sheets



Grain Line



Bonding line AD



Bonding line AD

SO

DRCOS

SITE [http://dr-cos.info\(en\)](http://dr-cos.info(en)) [http://dr-cos.com\(jp\)](http://dr-cos.com(jp))
MAIL info@dr-cos.com
Twitter [@drcos_com](https://twitter.com/@drcos_com)
facebook <https://www.facebook.com/drcoscom>

Bonding line Ea

Children

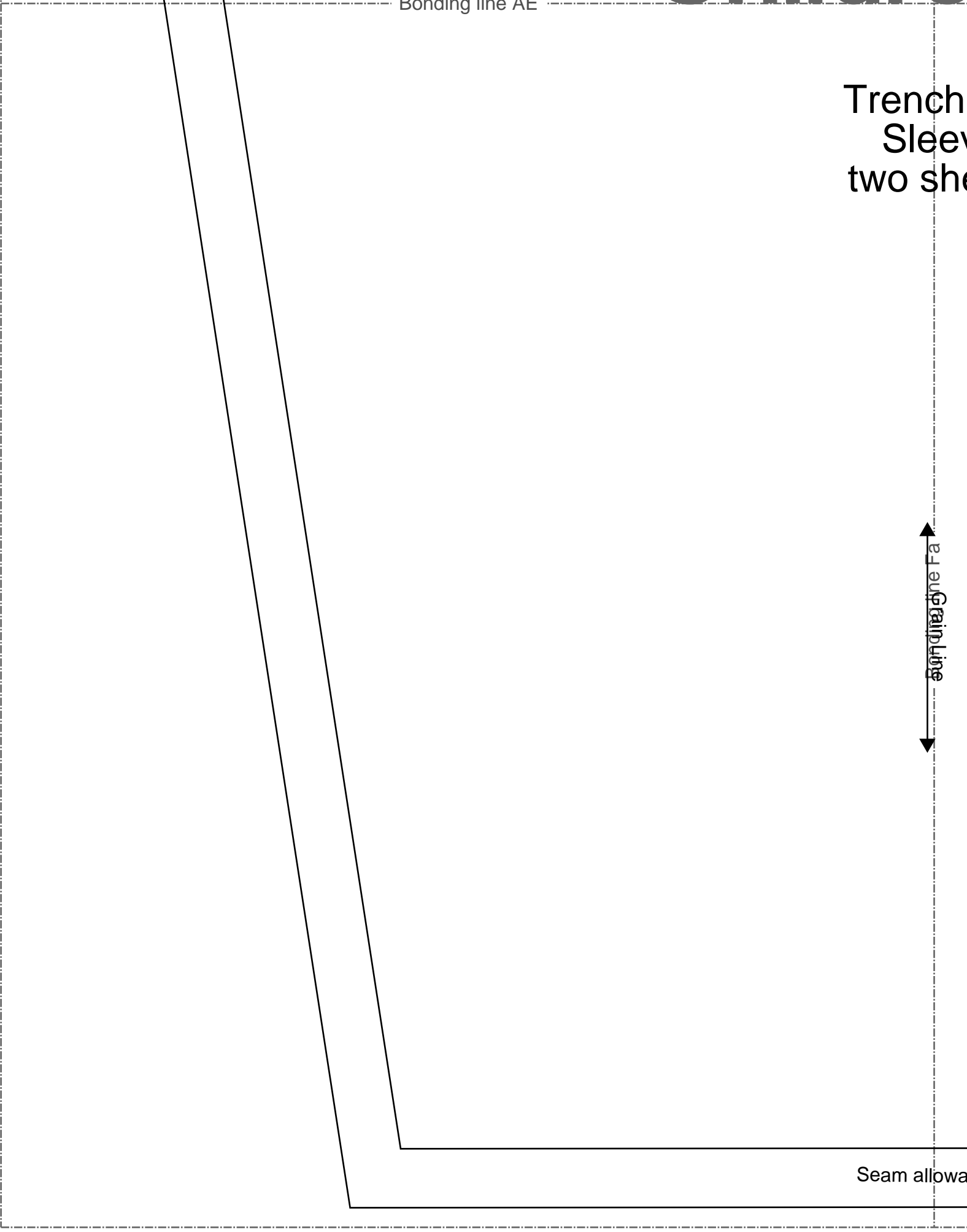
Bonding line AE

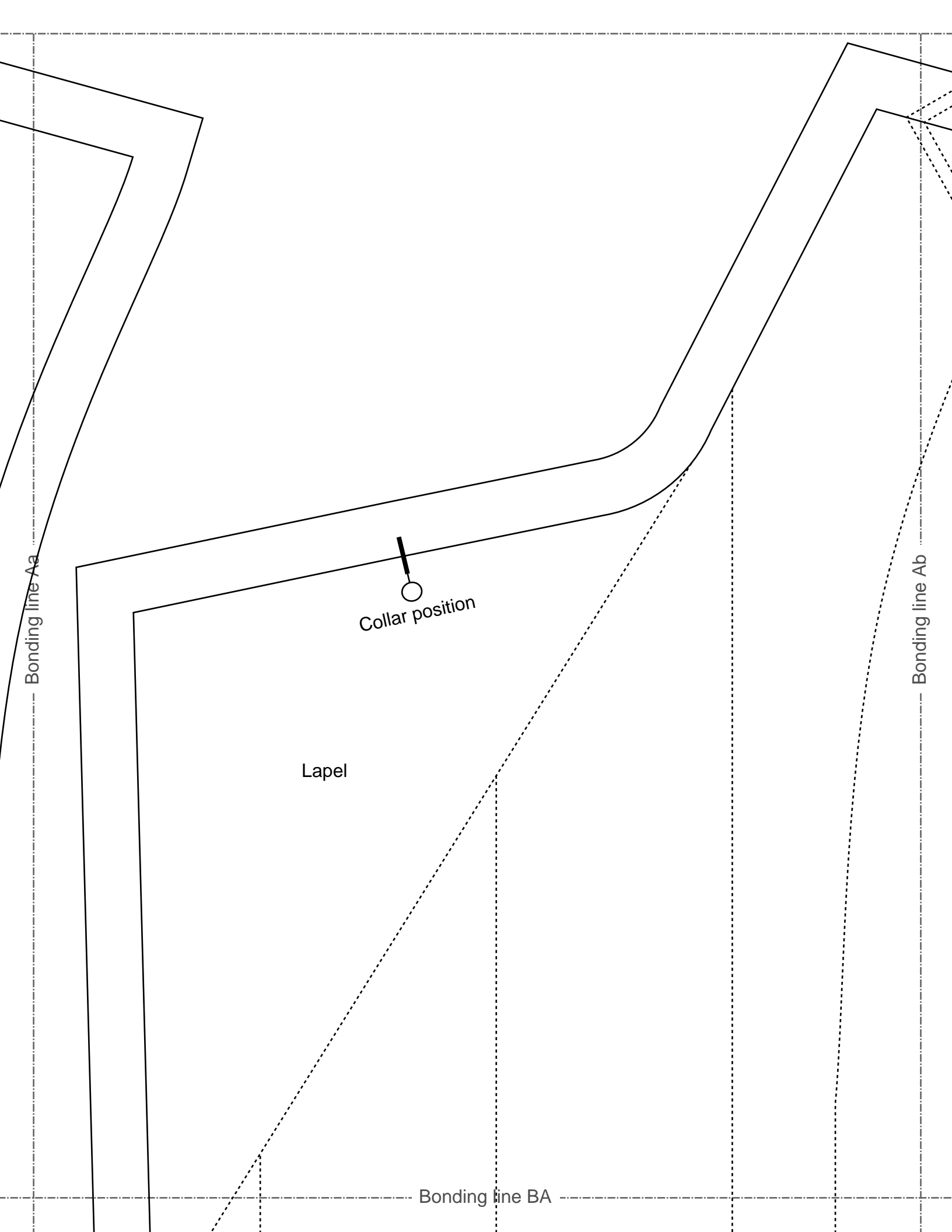
Bonding line AE

Trench
Sleeve
two sheets

சுருட்டித் திசை Fa

Seam allowance





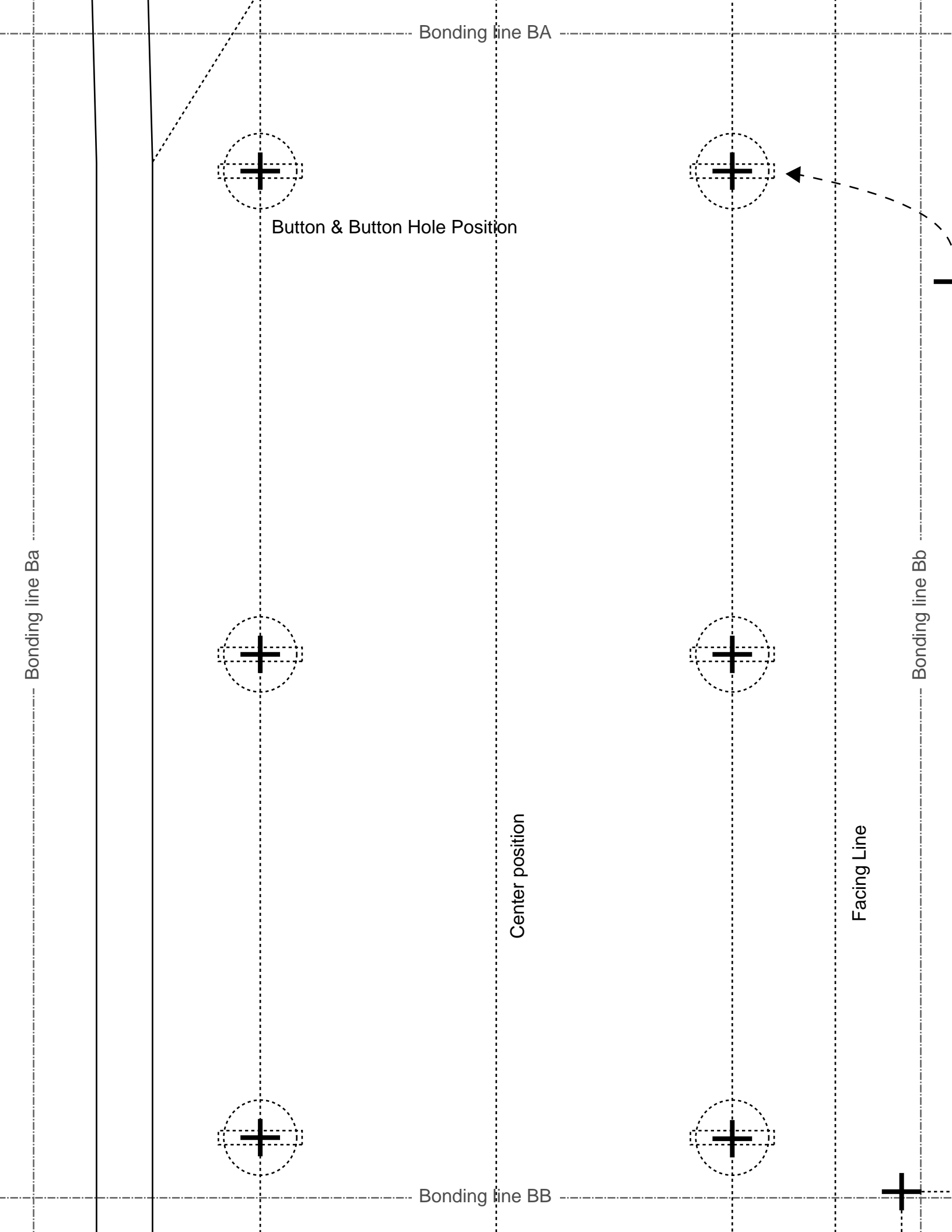
Bonding line Aa

Collar position

Lapel

Bonding line Ab

Bonding line BA



Bonding line BA

Button & Button Hole Position

Bonding line Ba

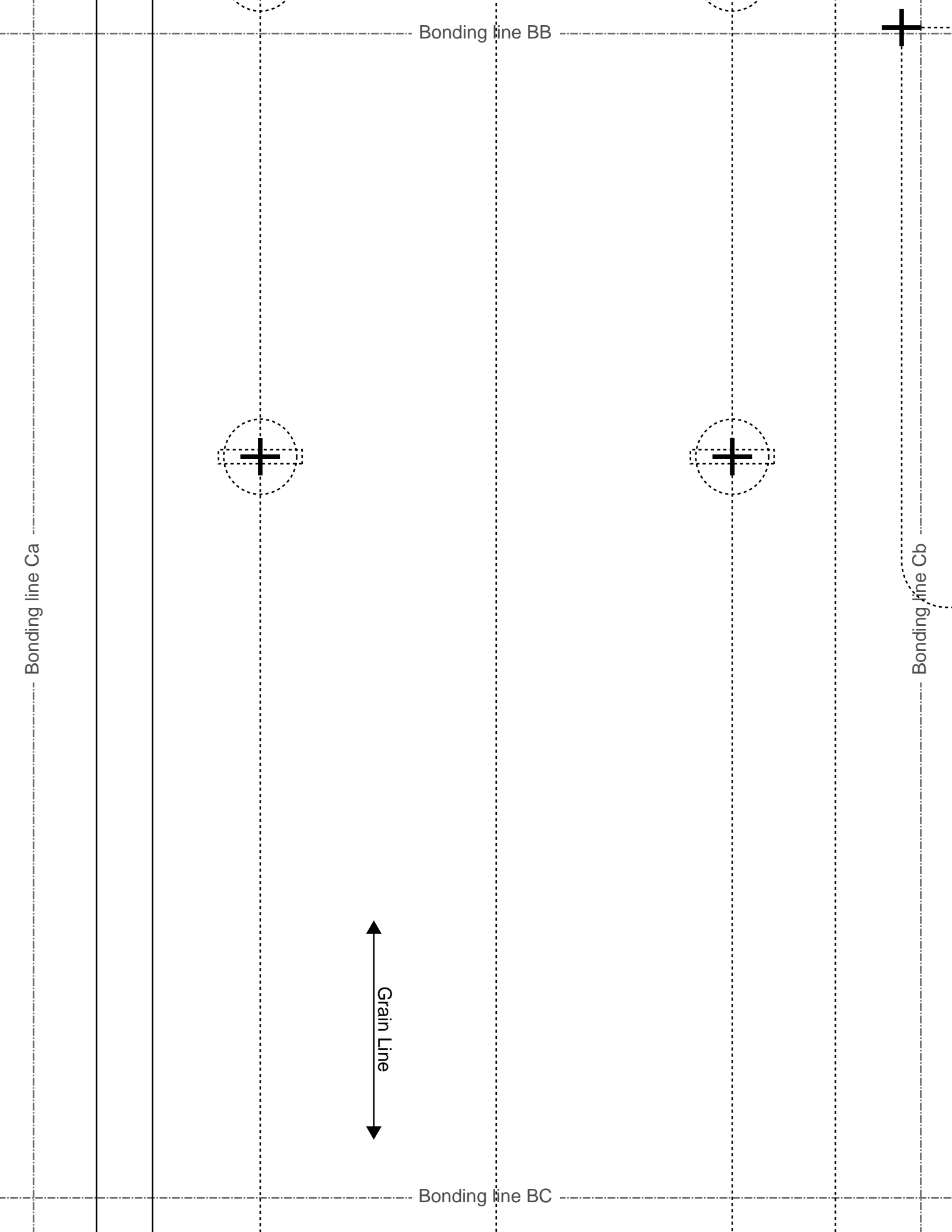
Center position

Facing Line

Bonding line Bb

Bonding line BB



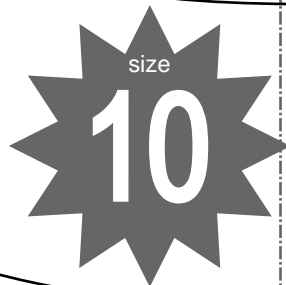
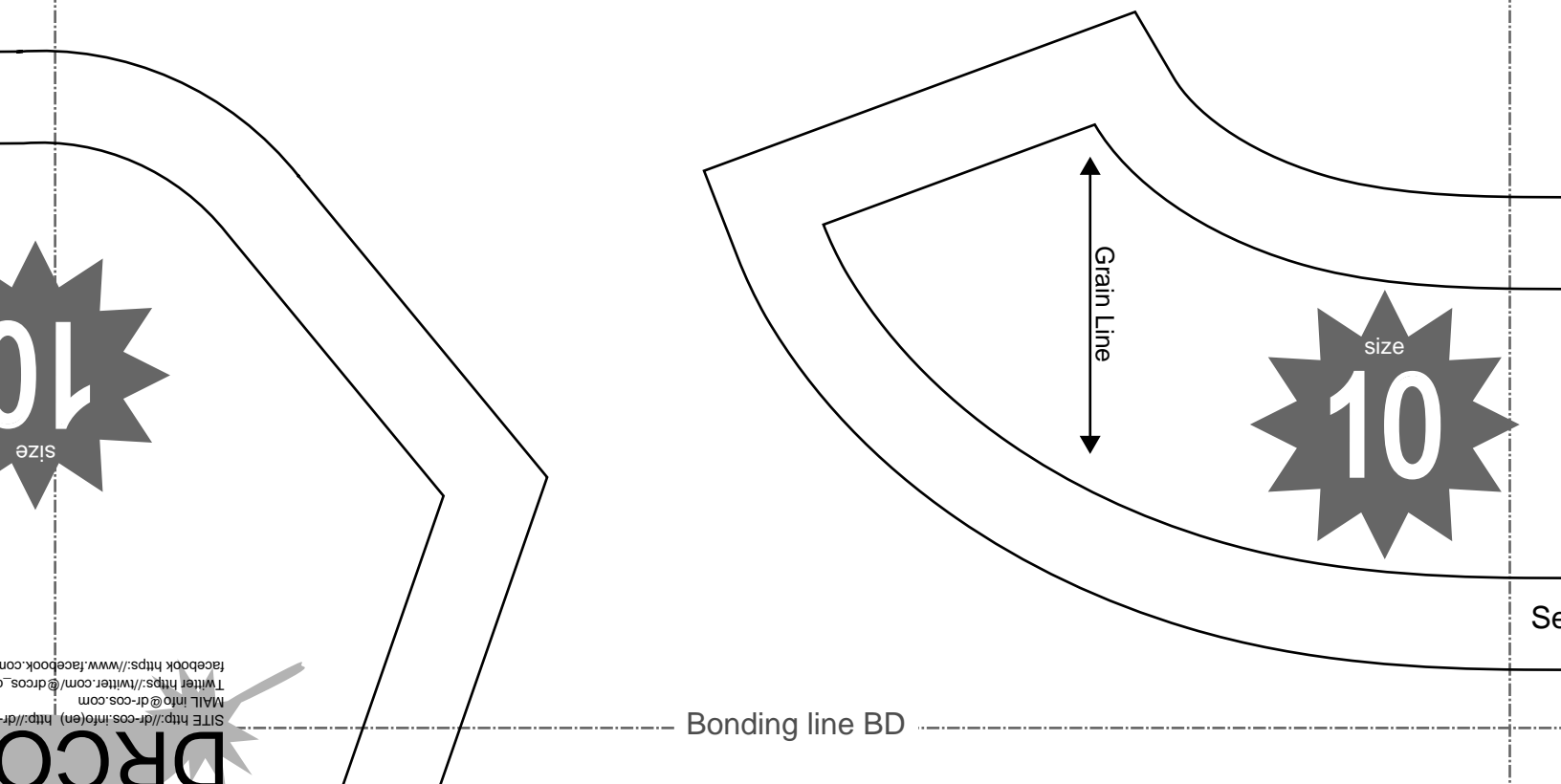


Bonding line BC

Bonding line Da

Bonding line Db

Seam allo



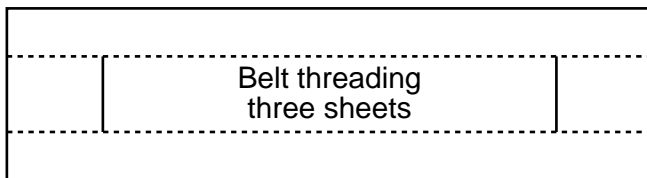
Grain Line

Bonding line BD

[SITE http://dr-cos.info/en](http://dr-cos.info/en) <http://dr-cos.com>
[MAIL info@dr-cos.com](mailto:info@dr-cos.com)
[Twitter https://twitter.com/dr-cos](https://twitter.com/dr-cos)
[facebook https://www.facebook.com](https://www.facebook.com/dr-cos)

DRCO

Bonding line BD



Bonding line Ea

Bonding line Eb

Bonding line BE



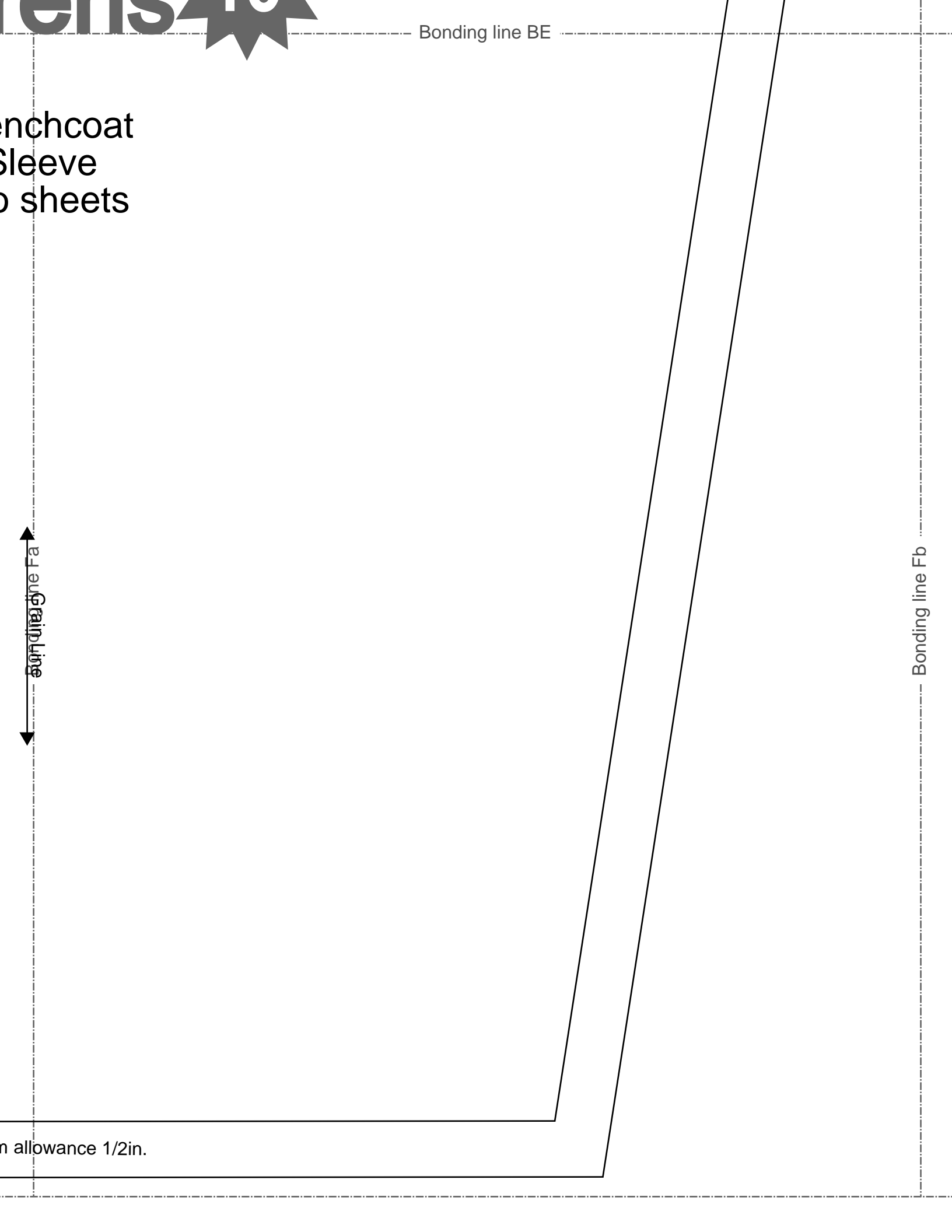
Bonding line BE

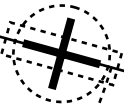
Printhead
Sleeve
to sheets

Bonding line Fa

Bonding line Fb

in allowance 1/2in.





Shoulder loop

DRCOS

SITE [http://dr-cos.info\(en\)](http://dr-cos.info(en)) [http://dr-cos.com\(jp\)](http://dr-cos.com(jp))
MAIL info@dr-cos.com
Twitter https://twitter.com/@drcos_com
facebook <https://www.facebook.com/drcoscom>

Bonding line Ab

Bonding line Ac

Bonding line CA

uon!sod do!s u

Bonding line CA

Bonding line Bb

Bonding line Bc

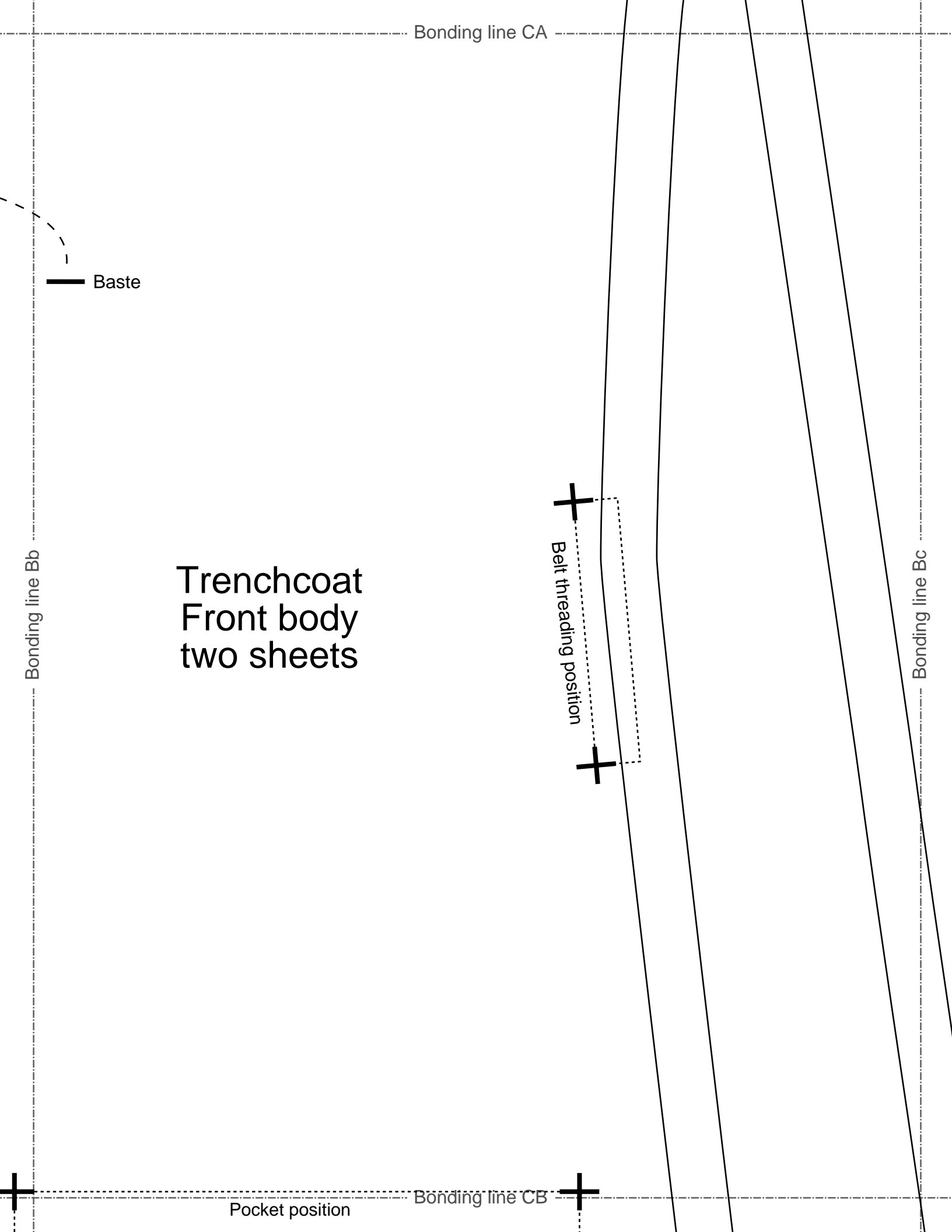
Bonding line CB

Pocket position

Baste

Trenchcoat Front body two sheets

Belt threading position



Pocket position

Bonding line CB

Bonding line Cb

Bonding line Cc

Children's ^{size} 10

Bonding line

Bonding line Db

Bonding line Dc

Seam allowance 1/2in.

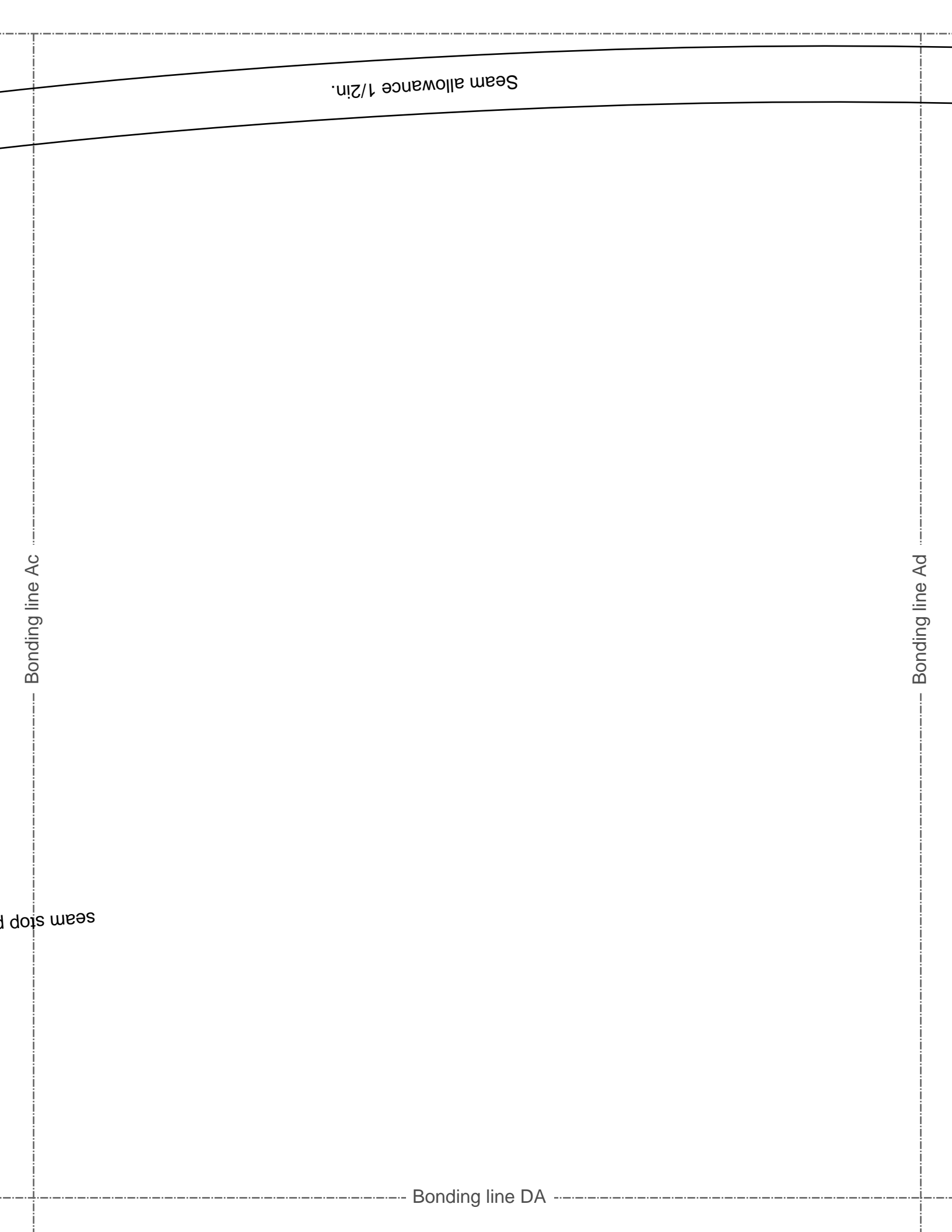
Trenchcoat
Back body facing
one sheets
Fusible interlining
one sheets

DRCOS

SITE <http://dr-cos.info/en> <http://dr-cos.com/p/>
MAIL info@dr-cos.com
Twitter https://twitter.com/dr-cos_com
facebook <https://www.facebook.com/drcoscom>

Seam allowance 1/2in.

Bonding line CD



Seam allowance 1/2 in.

Bonding line Ac

Bonding line Ad

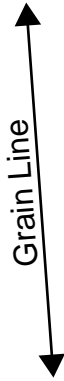
Bonding line DA

seam stop

Bonding line DA

Bonding line Bc

Bonding line Bd



Bonding line DB



on

Bonding line DB

Trenchcoat
Back body
two sheets

Children's
size 10

Belt threading position

Bonding line Cc

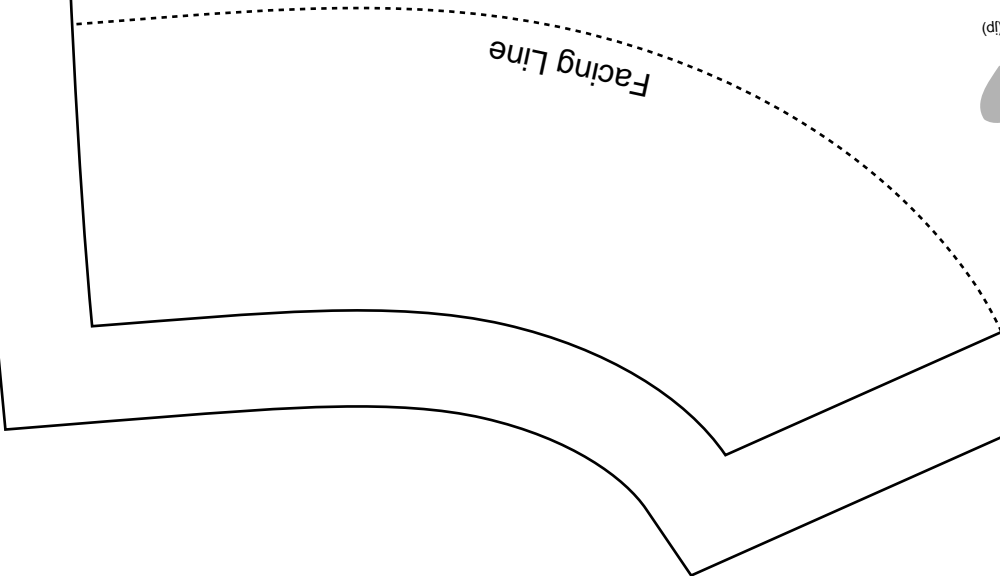
Bonding line Cd

Bonding line DC

Bonding line DC

Bonding line Dc

Bonding line Dd



DRCOS
 SITE [http://dr-cos.info\(en\)](http://dr-cos.info(en)) [http://dr-cos.com\(fp\)](http://dr-cos.com(fp))
 MAIL info@dr-cos.com
 Twitter [@dr-cos.com](https://twitter.com/dr-cos.com)
 Facebook <https://www.facebook.com/drcoscom>

Seam allowance 1/4in.

Stitch line

DRCOS

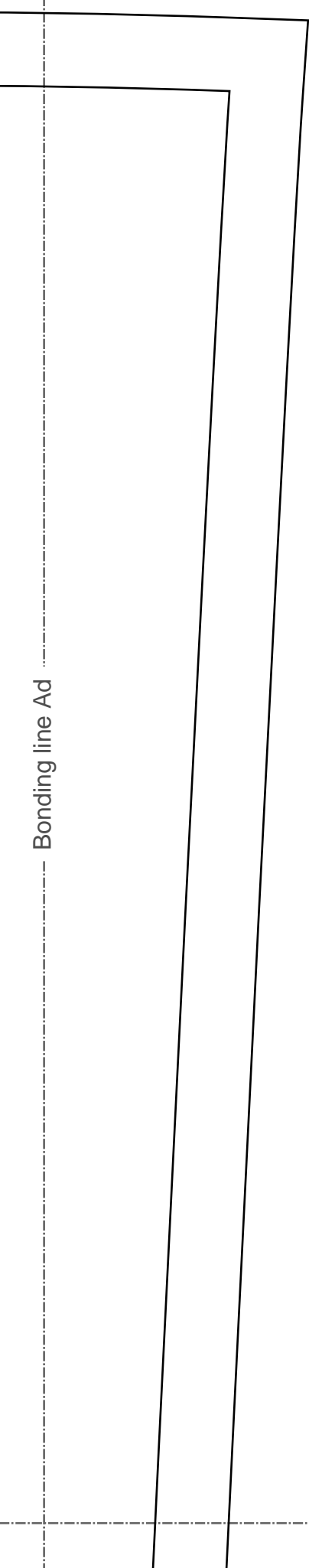
SITE [http://dr-cos.info\(en\)](http://dr-cos.info(en)) [http://dr-cos.com\(fp\)](http://dr-cos.com(fp))
 MAIL info@dr-cos.com
 Twitter [@dr-cos.com](https://twitter.com/dr-cos.com)
 Facebook <https://www.facebook.com/drcoscom>

Shoulder loop
four sheets

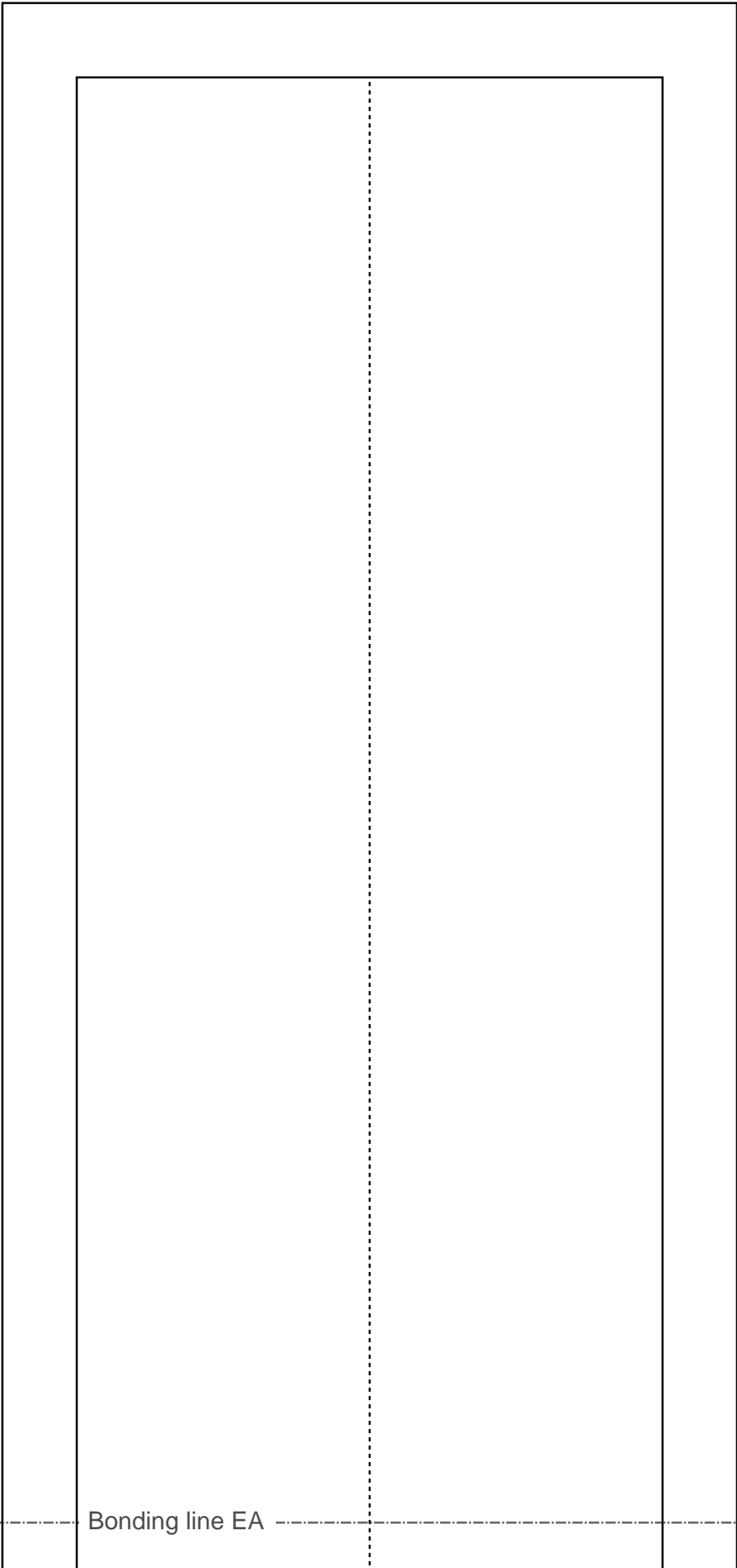


Bonding line DD

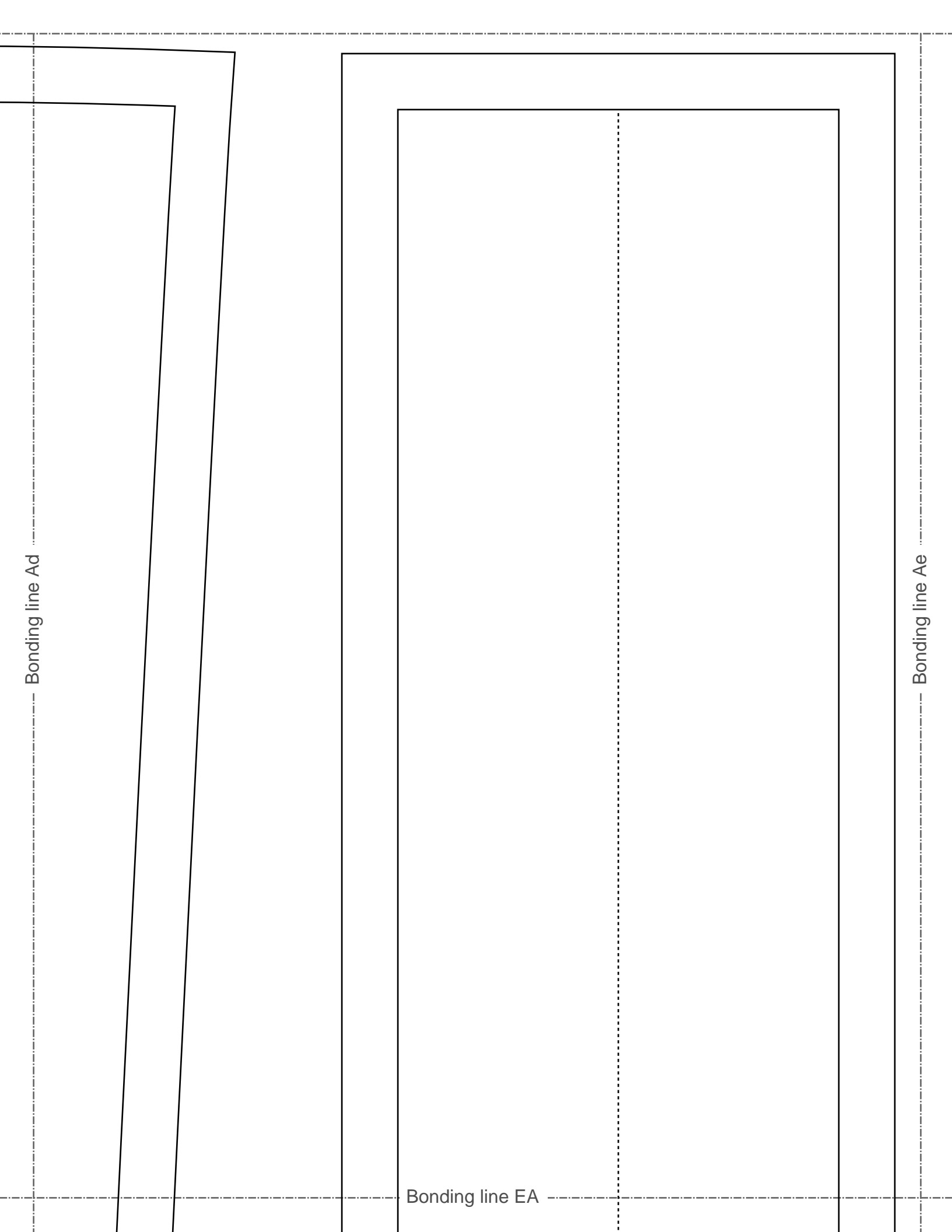
Bonding line Ad



Bonding line EA



Bonding line Ae



Bonding line Bd

Bonding line EA

Children's  10 size

Bonding line Be

Bonding line EB

Bonding line Ce

**Trenchcoat
Belt
one sheets**

Folding line

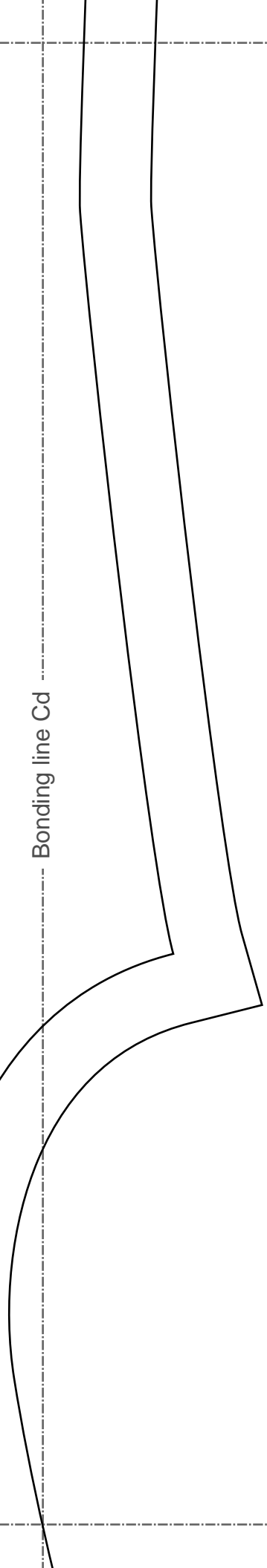


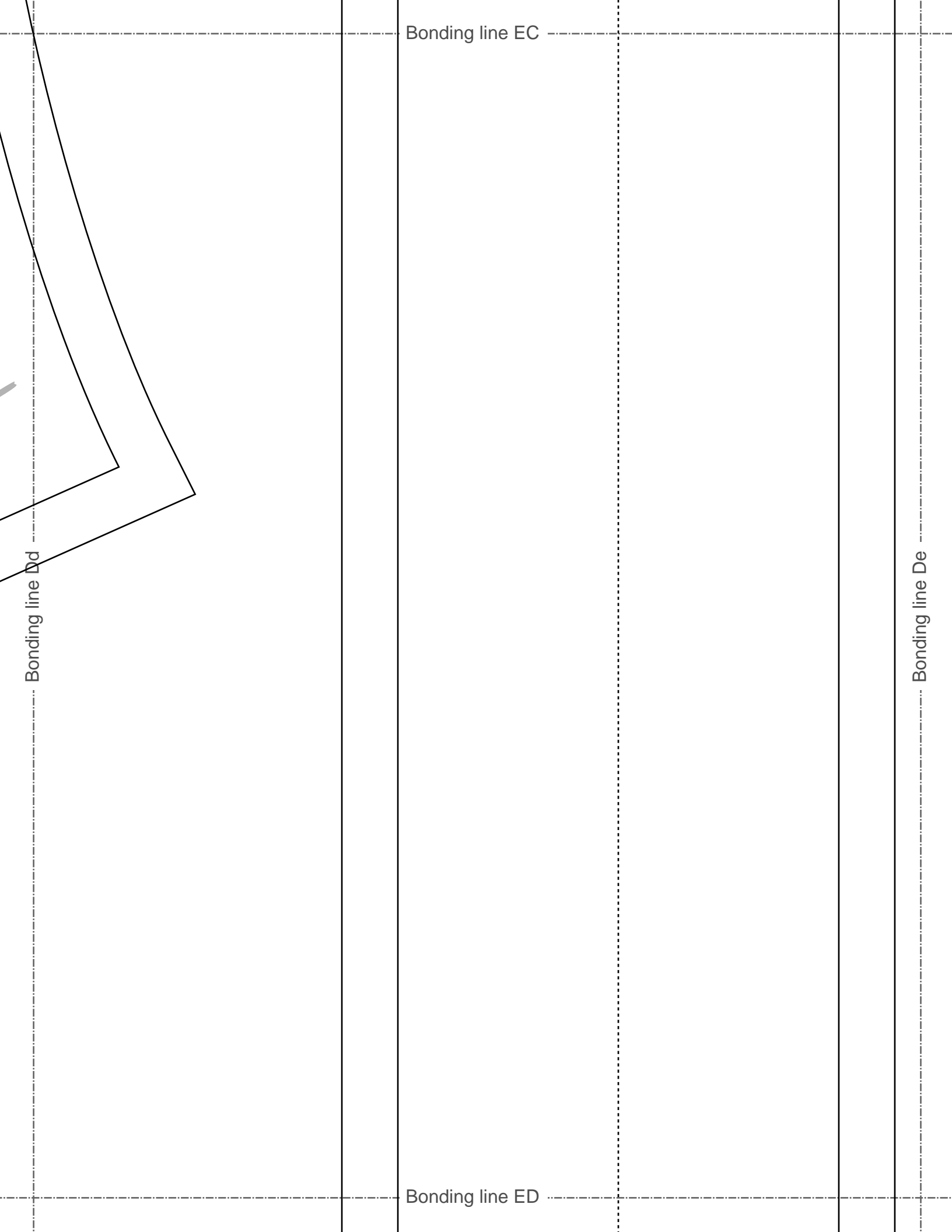
Bonding line EB

Bonding line EC

Seam allowance 1/2in.

Bonding line Cd





Bonding line ED

DRCOS
 SITE [http://dr-cos.info\(en\)](http://dr-cos.info/en) [http://dr-cos.com\(jp\)](http://dr-cos.com/jp)
 MAIL info@dr-cos.com
 Twitter [@drcos_com](https://twitter.com/@drcos_com)
 facebook <https://www.facebook.com/drcoscom>

Bonding line Ed

DRCOS
 SITE [http://dr-cos.info\(en\)](http://dr-cos.info(en)) [http://dr-cos.com\(jp\)](http://dr-cos.com(jp))
 MAIL info@dr-cos.com
 Twitter [@drcos_com](https://twitter.com/@drcos_com)
 facebook <https://www.facebook.com/drcoscom>

Children's **10** size
 Trenchcoat
 pocket
 two sheets

Grain Line

Seam allowance 1/2in.

Bonding line Ee

Bonding line EE