

Bonding line AA

Bonding line Ba

Bonding line AB

DRCOS

SITE <http://dr-cos.com>
MAIL info@dr-cos.com
Twitter https://twitter.com/@drcos_com
facebook <https://www.facebook.com/drcoscom>

size
5 1/2
17.3in.

**Tophat
Top**
interfacing(heavy weight)
two sheets

17.3in.

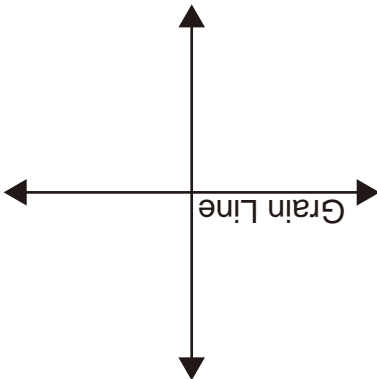
**Top Hat
Brim**
interfacing(heavy weight)
two sheets

ing line Aa

DRCOS

SITE <http://dr-cos.com>
MAIL info@dr-cos.com
Twitter https://twitter.com/@drcos_com
facebook <https://www.facebook.com/drcoscom>

Seam allowance 1/2in.



match marks

match marks

one sheets

5 1/2
17.3in.

Bonding line P

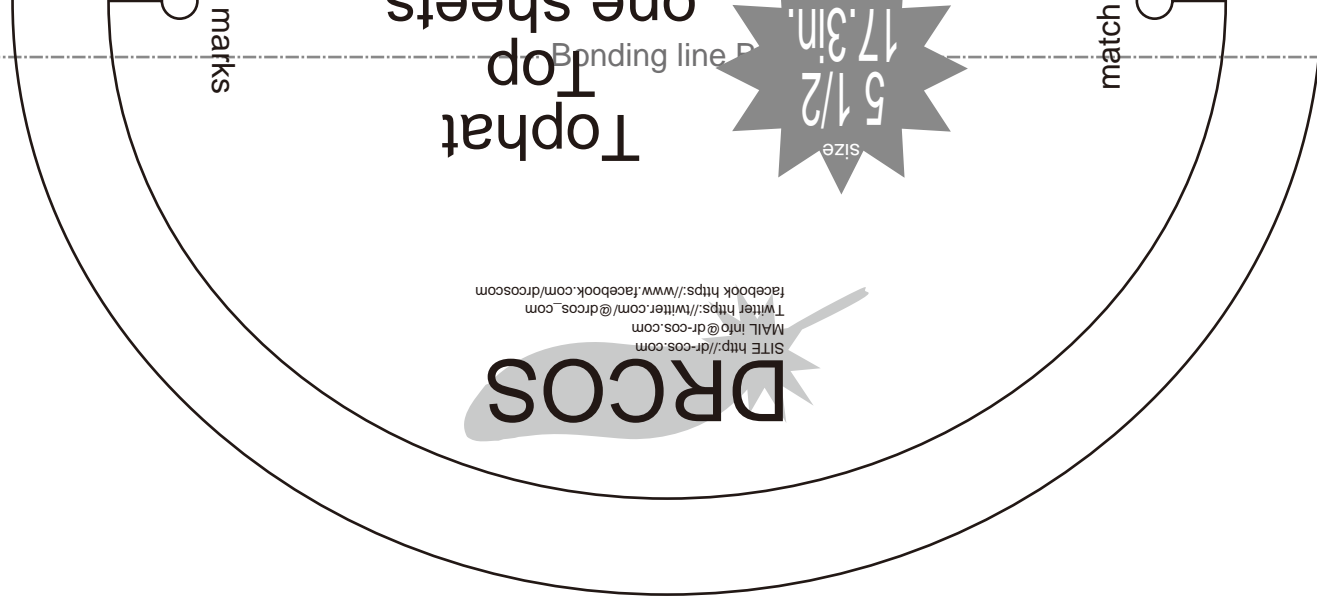
Bonding line Ba

Bonding line Bb



**Tophat
Side**

interfacing(heavy weight)
one sheets



Bonding line BB

Bonding line Ac

DRCOS

SITE <http://dr-cos.com>
MAIL info@dr-cos.com
Twitter [@drcos_com](https://twitter.com/@drcos_com)
facebook <https://www.facebook.com/drcos.com>



Bonding line CA

size

5 1/2
17.3in.

Top hat
Brim

Manufacturing (how to weigh it)

Bonding line CA

DRCOS

SITE <http://dr-cos.com>
MAIL info@dr-cos.com
Twitter https://twitter.com/@drcos_com
facebook <https://www.facebook.com/drcoscom>

Bonding line Bb

Bonding line Bc

Bonding line CB

Bonding line DA

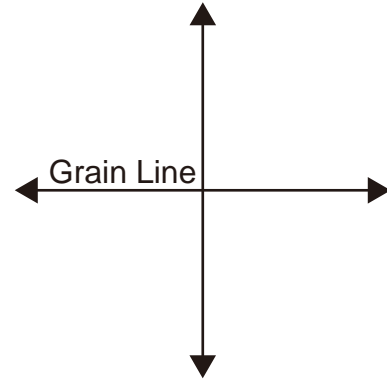
Bonding line Bc



Tophat
Side
one sheets



match marks



Bonding line Bd

match marks



Bonding line DB



How to make

Sorry if I haven't made myself understood (well) in English. You know I'm poor at English.

1. iron on the interfacing (heavy weight) to "top" "side" "brim"
 2. "side" is sew up and loop
 3. "top" and "side" sew pieces
 4. "brim" is sew up and loop
- The surface and the back are same.
5. two "brims" are sewn up by a dotted line.
 6. In a "brim", bias (A wire is put in.)
 7. "side" "brim" is sewn up.

Seam allowance 1/2in.