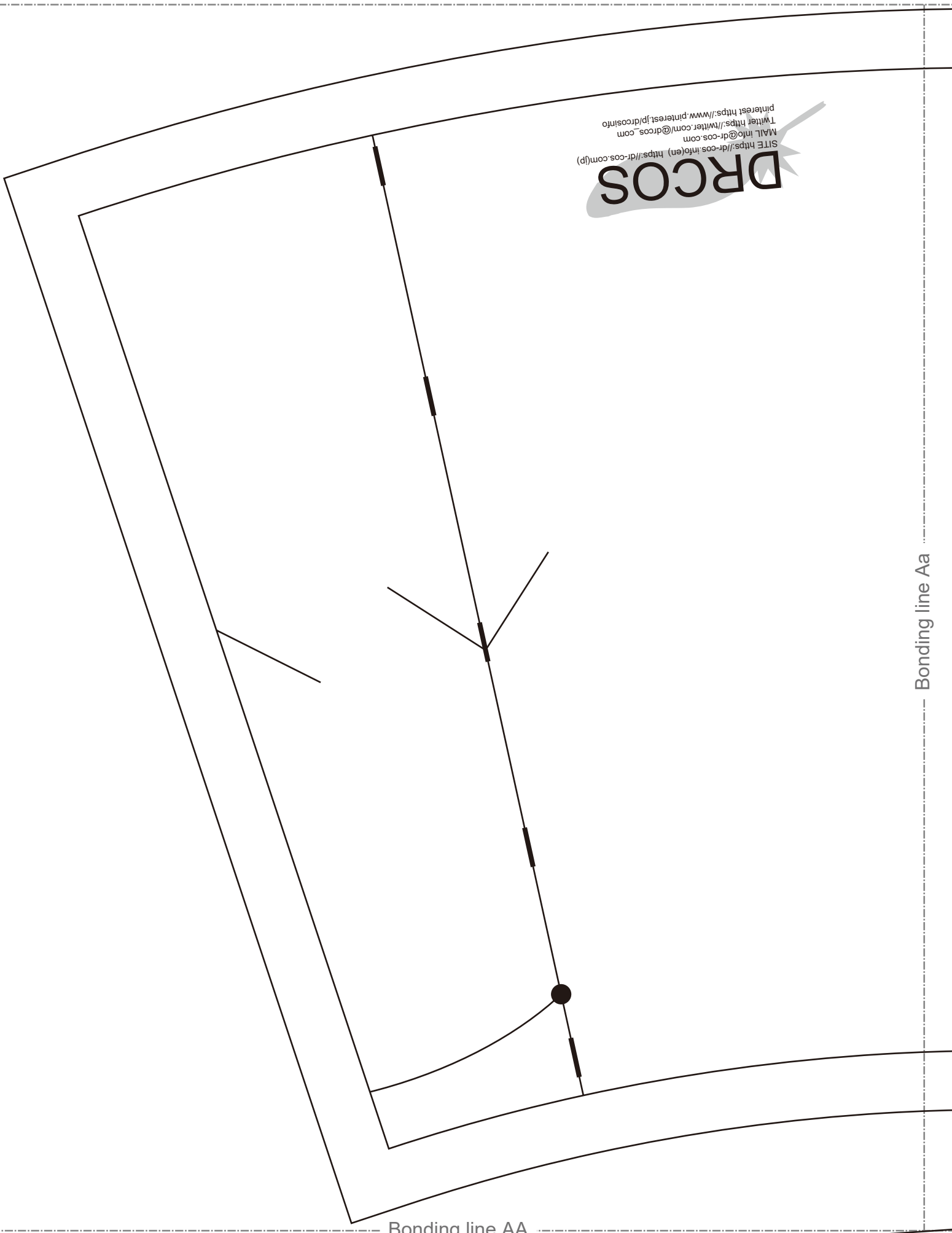


SITE [https://dr-cos.info\(en\)](https://dr-cos.info/en) [https://dr-cos.com/\(p\)](https://dr-cos.com/(p))  
MAIL [info@dr-cos.com](mailto:info@dr-cos.com)  
Twitter <https://twitter.com/dr-cos.com>  
Pinterest <https://www.pinterest.jp/dr-cos/info>

**DRCOS**



Bonding line AA

Bonding line Aa

Bonding line AA

Bonding line AB

Bonding line Ba

Seam allowance 1/2in.

Grain Line



Bonding line AB

**DRCOS**

SITE: <https://dr-cos.info/en> <https://dr-cos.com/jp>  
MAIL: [info@dr-cos.com](mailto:info@dr-cos.com)  
Twitter: [@drcos\\_com](https://twitter.com/@drcos_com)  
Pinterest: <https://www.pinterest.jp/drcosinfo>

Facing line

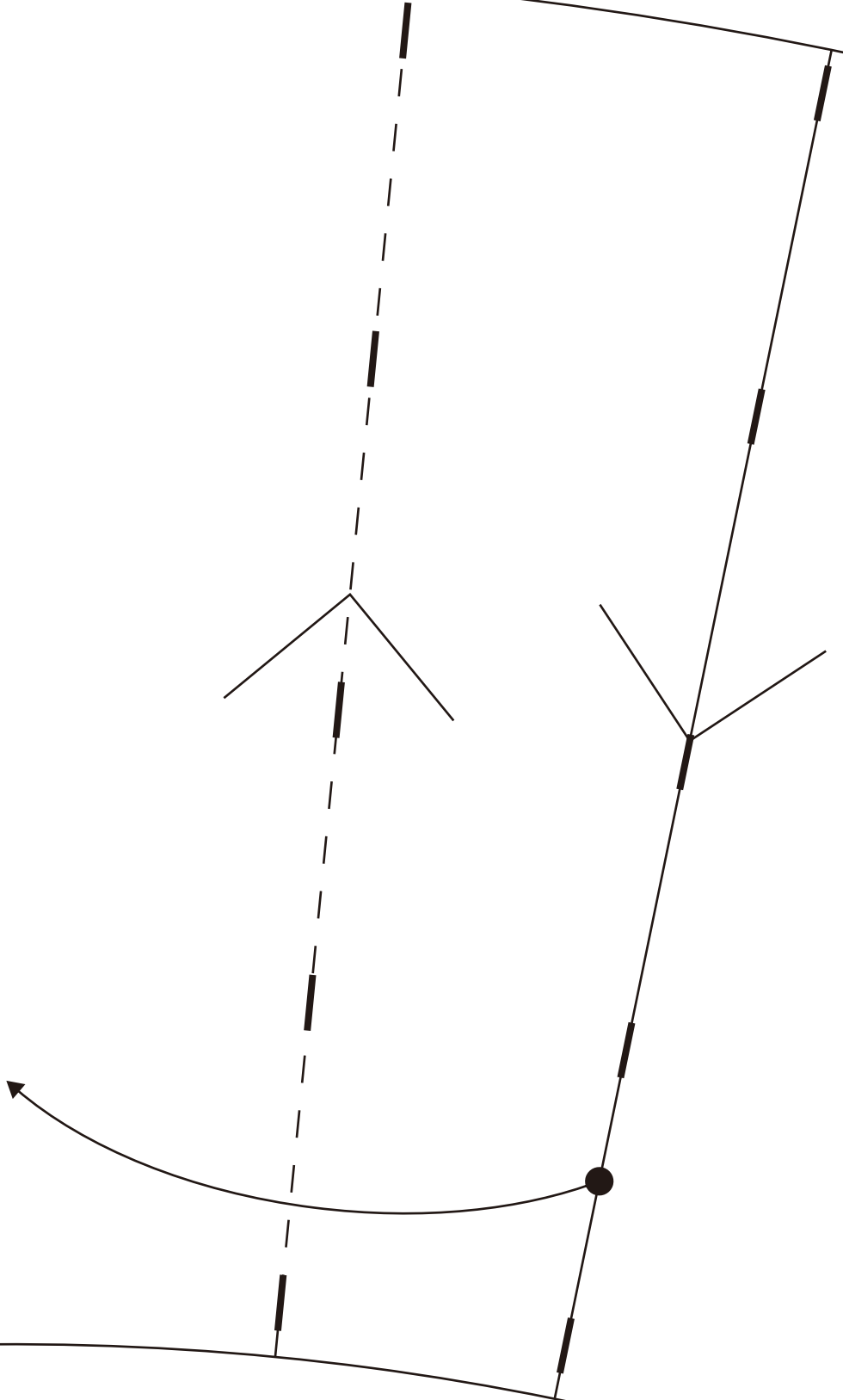
size  
**10**

**Children's**

Bonding line Ca

Bonding line AC

Bonding line Aa



Bonding line BA

Bonding line Ab

Children's <sup>size</sup> 10

Bonding line BA

Front

# Children's <sup>size</sup> 10

Switching pleated one piece  
Sleeve  
two sheets

Bonding line BB

Back

Bonding line Ba

Children's

Bonding line Ca

Bonding line BB

Back

**DRCOS**  
<https://drcos.info/en>  
<https://drcos.com>  
 MAIL [info@drcos.com](mailto:info@drcos.com)  
 Twitter <https://twitter.com/drcosinfo>  
 Pinterest <https://www.pinterest.jp/drcosinfo>



# Children's

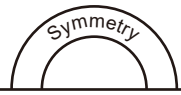
Created one piece  
 Body (side)  
 0 sheets

Bonding line Cb

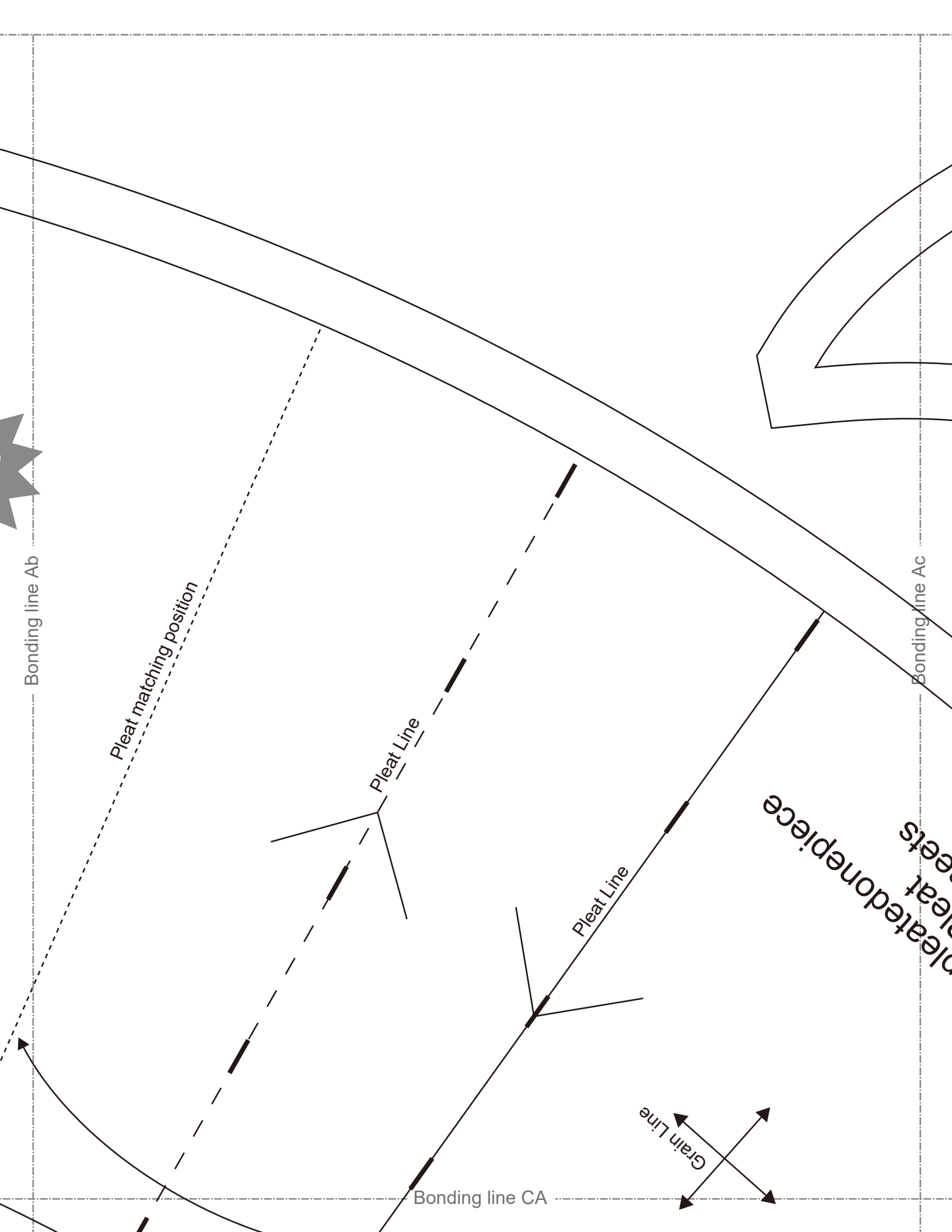
Switching pleated one piece  
 Front Body  
 one sheets



← Grain Line



Bonding line BC

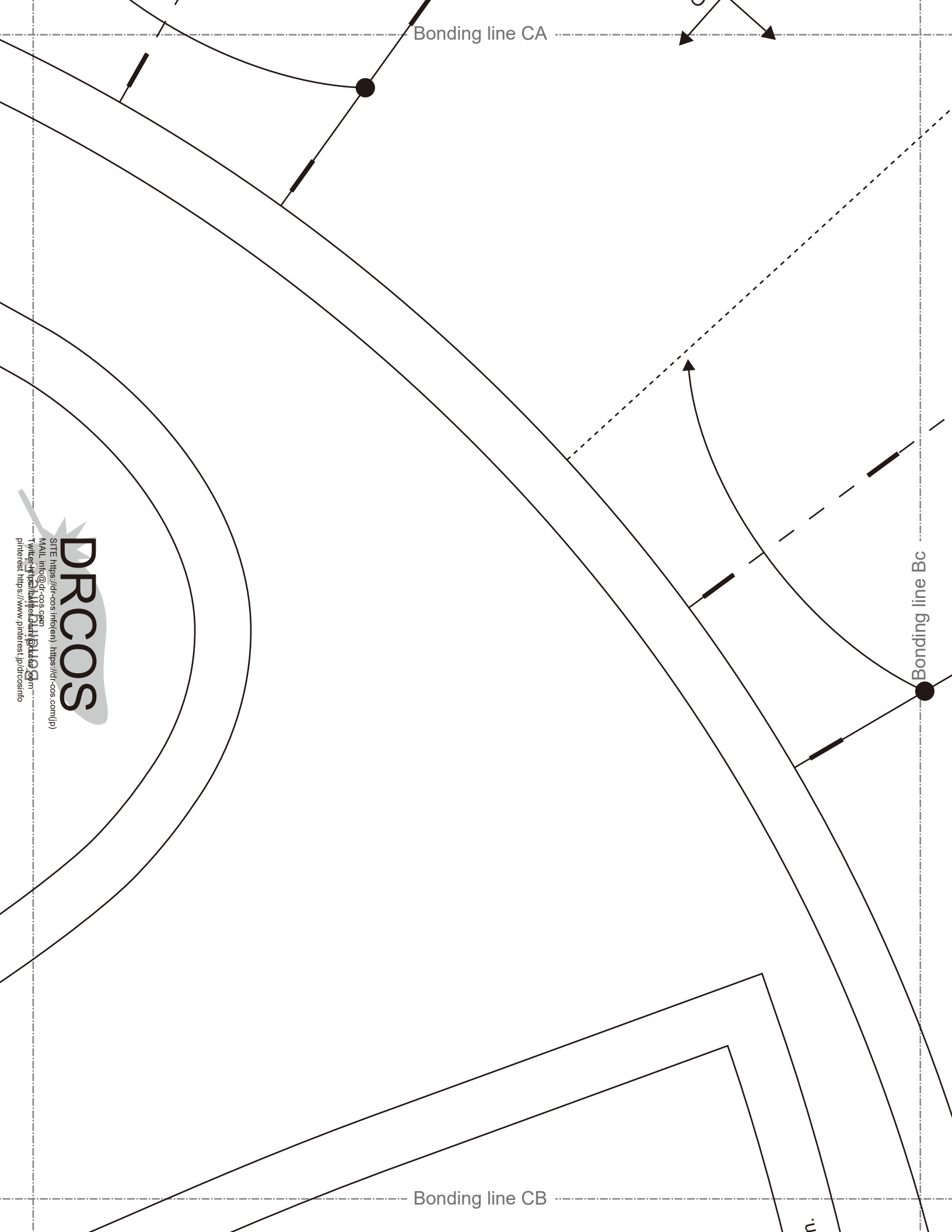


Bonding line CA

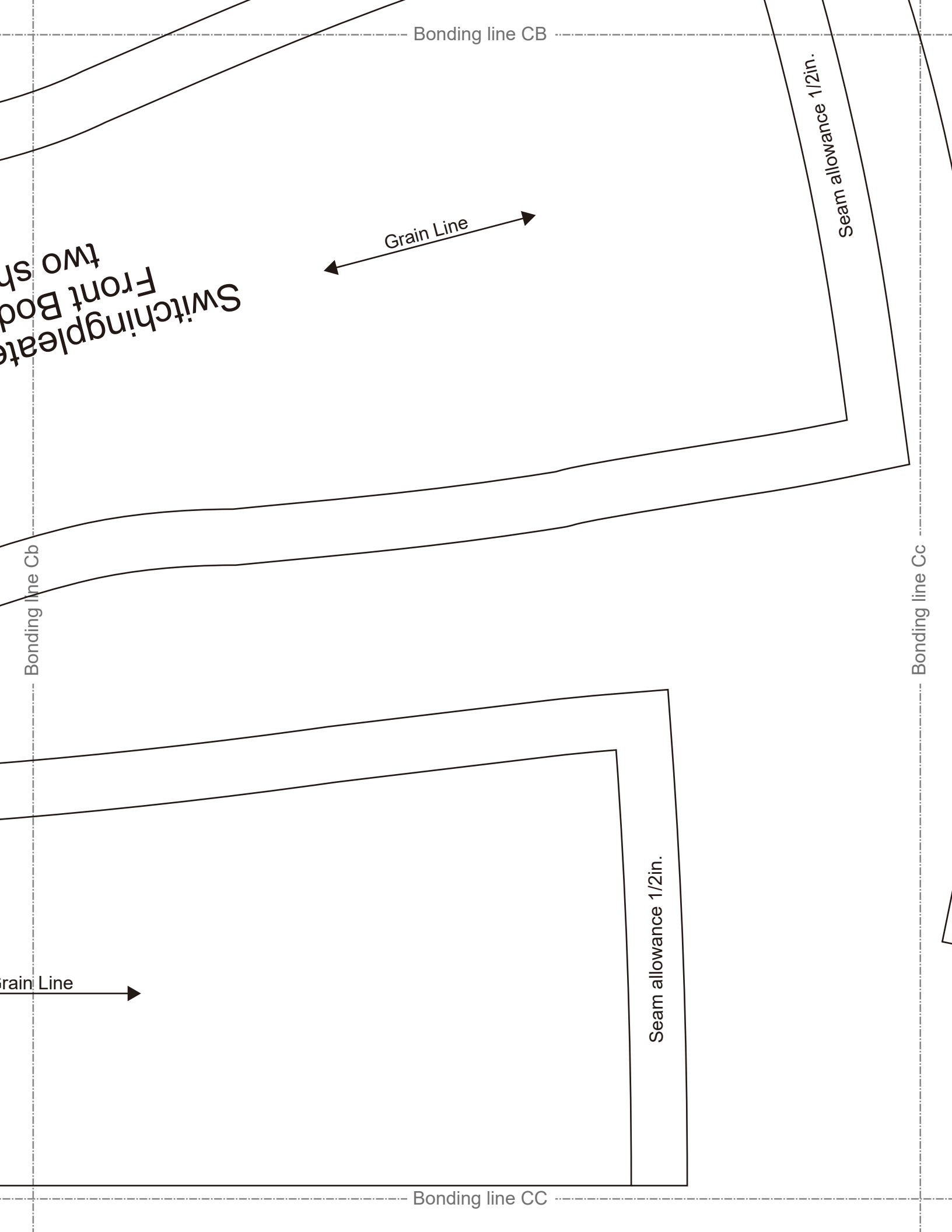
Bonding line Bc

Bonding line CB

**DRCOS**  
SITE <https://dr-cos.info/> (en) <https://dr-cos.com/jp/>  
MAIL [info@dr-cos.com](mailto:info@dr-cos.com)  
TEL [+81 3 3441 1000](tel:+81334411000)  
FAX [+81 3 3441 1001](tel:+81334411001)  
WWW [www.dr-cos.com](http://www.dr-cos.com)  
PINTEREST <https://www.pinterest.jp/dr-cos/info>







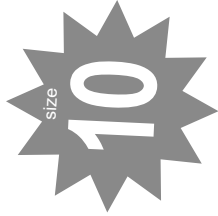
Bonding line Ac

Seam allowance 1/2in.

Switchingpleated  
Pleat  
two sheets

**DRCOS**

SITE <https://dr-cos.info/en> <https://dr-cos.com/jp>  
MAIL [info@dr-cos.com](mailto:info@dr-cos.com)  
Twitter <https://twitter.com/dr-cos>  
Pinterest <https://www.pinterest.jp/drcosinfo>



# Children's

Switchingpleatedonepiece  
Back Body(side)  
two sheets

Bonding line Ad

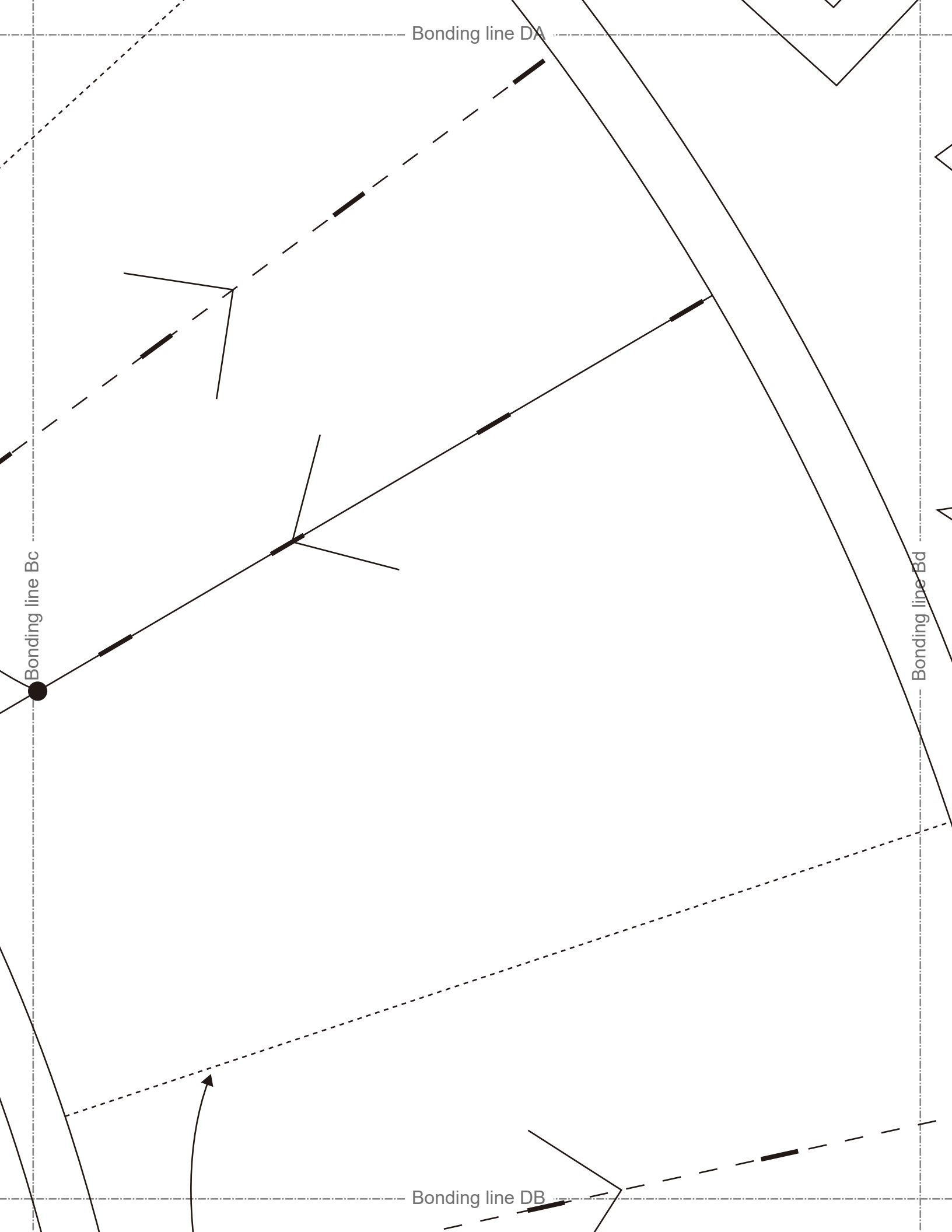


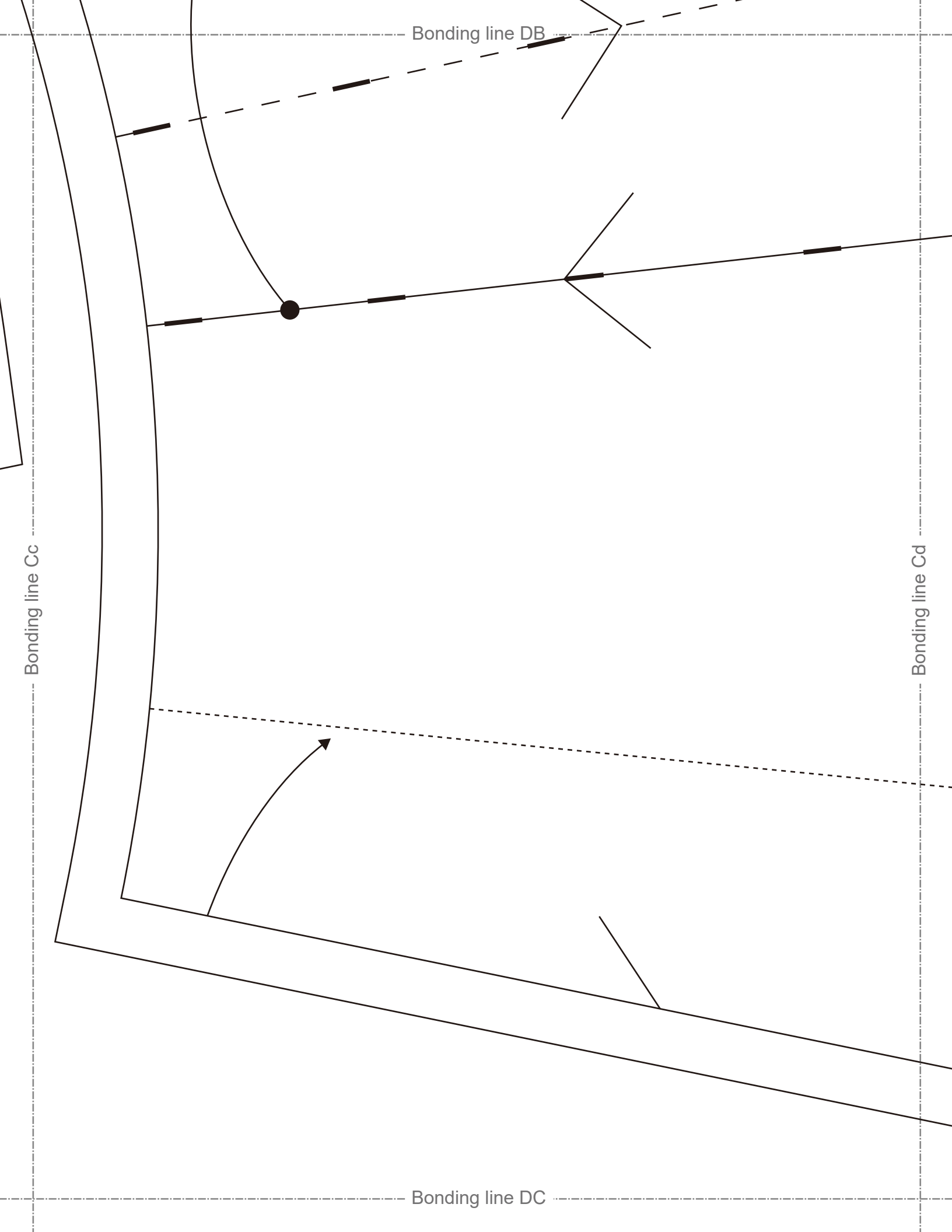
Seam allowance 1/2in.

Switchingpleatedonepiece  
Back Facing  
Fusible interlining  
two sheets

Strain Line

Bonding line DA





Switching  
Back  
tw

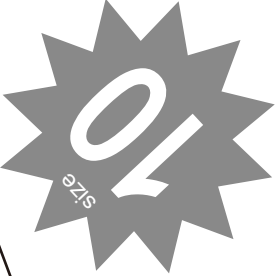
Grain Line

Seam allowance 1/2in.

Bonding line Ad

Bonding line Ae

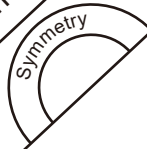
Seam allowance 1/2in.



Switchingpleatedonepiece  
Front Facing  
Fusible Interlining  
one sheets



Grain Line



Grain Line

Bonding line EA

Bonding line EA

Facing line

# DRCOS

SITE [https://dr-cos.info\(en\)](https://dr-cos.info(en)) [https://dr-cos.com\(jp\)](https://dr-cos.com(jp))  
MAIL [info@dr-cos.com](mailto:info@dr-cos.com)  
Twitter [https://twitter.com/@drcos\\_com](https://twitter.com/@drcos_com)  
pinterest <https://www.pinterest.jp/drcosinfo>

Fusible Stay tape



# Children's

gpleatedonepiece  
Back Body  
two sheets

Bonding line Bd

Bonding line Be

Bonding line EB

