

Grain Line



Bonding line Aa



SITE <http://dr-cos.info/en> <http://dr-cos.com/jp>  
MAIL: [info@dr-cos.com](mailto:info@dr-cos.com)  
Twitter: [@drcos.com](https://twitter.com/@drcos.com)  
facebook: <https://www.facebook.com/drcoscom>

Seam allowance 1/2in.

Grain Line



Bonding line AA

Seam allowance 1/2in

Bonding line AA

ce 1/2in.

**DRCOS**  
 SITE <http://dr-cos.info/en> <http://dr-cos.com/fp>  
 MAIL [info@dr-cos.com](mailto:info@dr-cos.com)  
 Twitter <https://twitter.com/dr-cos>  
 facebook <https://www.facebook.com/drcoscom>

Bonding line Ba

Switching  
 One Piece Dress  
 Back body side  
 two sheets

Seam allowance 1/2in.

**DRCOS**  
 SITE <http://dr-cos.info/en> <http://dr-cos.com/fp>  
 MAIL [info@dr-cos.com](mailto:info@dr-cos.com)  
 Twitter <https://twitter.com/dr-cos>  
 facebook <https://www.facebook.com/drcoscom>

Bonding line AB

Bonding line AB

ain Line

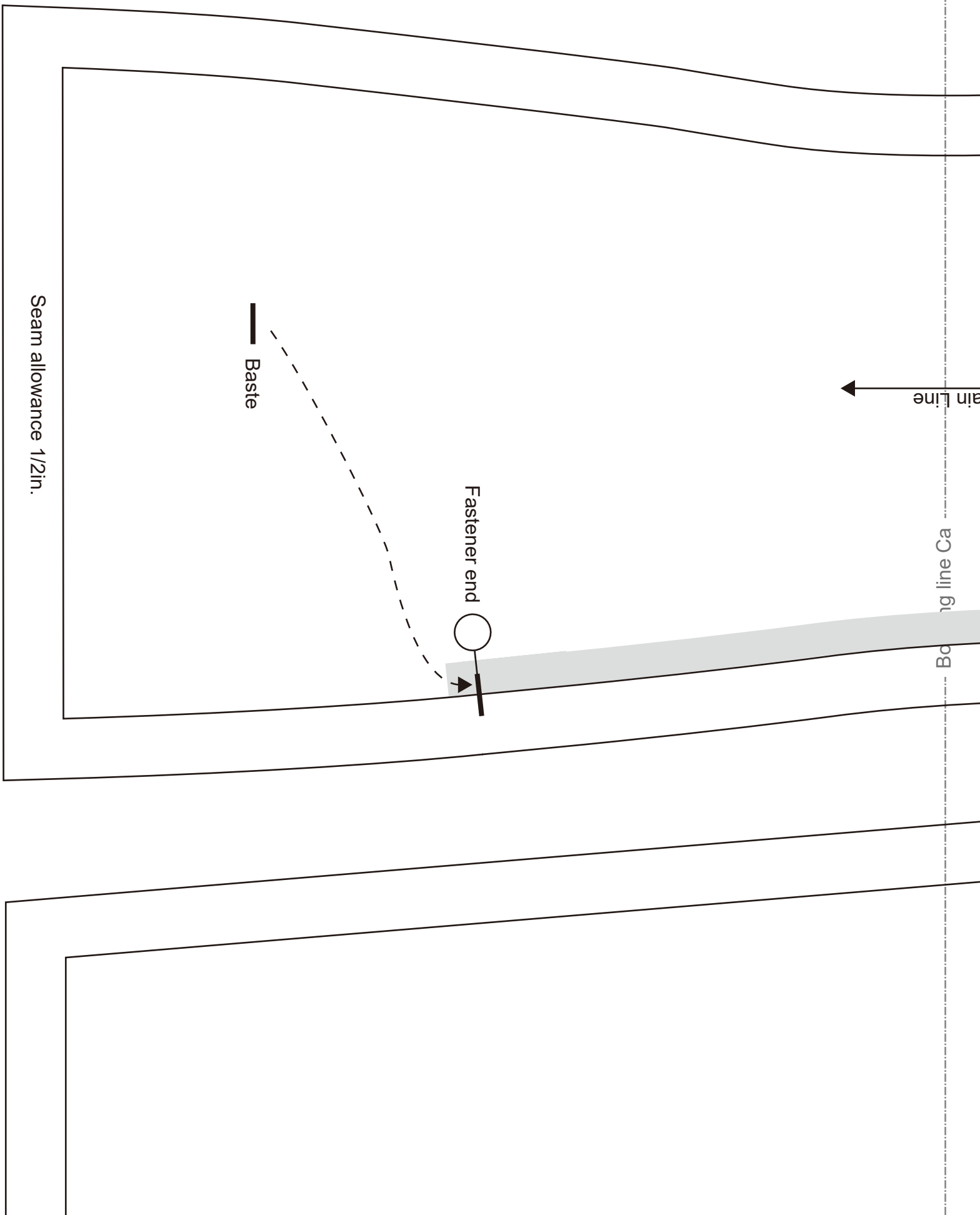
Bonding line Ca

Bonding line AC

Seam allowance 1/2in.

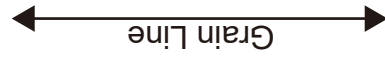
Baste

Fastener end



Bonding line AC

Seam allowance 1/2in.



Bonding line Da

Bonding line AD

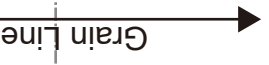


Switching  
 One Piece Dress  
 Front body  
 one sheets



Bonding line Aa

Bonding line Ab



Switching  
 One Piece Dress  
 Front body side  
 two sheets



LADIES

Bonding line BA

Bonding line BA

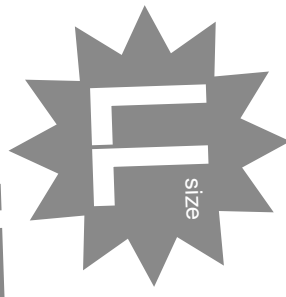
LADIES'

g  
dress  
side  
ts

Bonding line Ba

Bonding line Bb

LADIES'



Grain Line

Bonding line BB

**Switching  
One Piece Dress  
Back body  
two sheets**

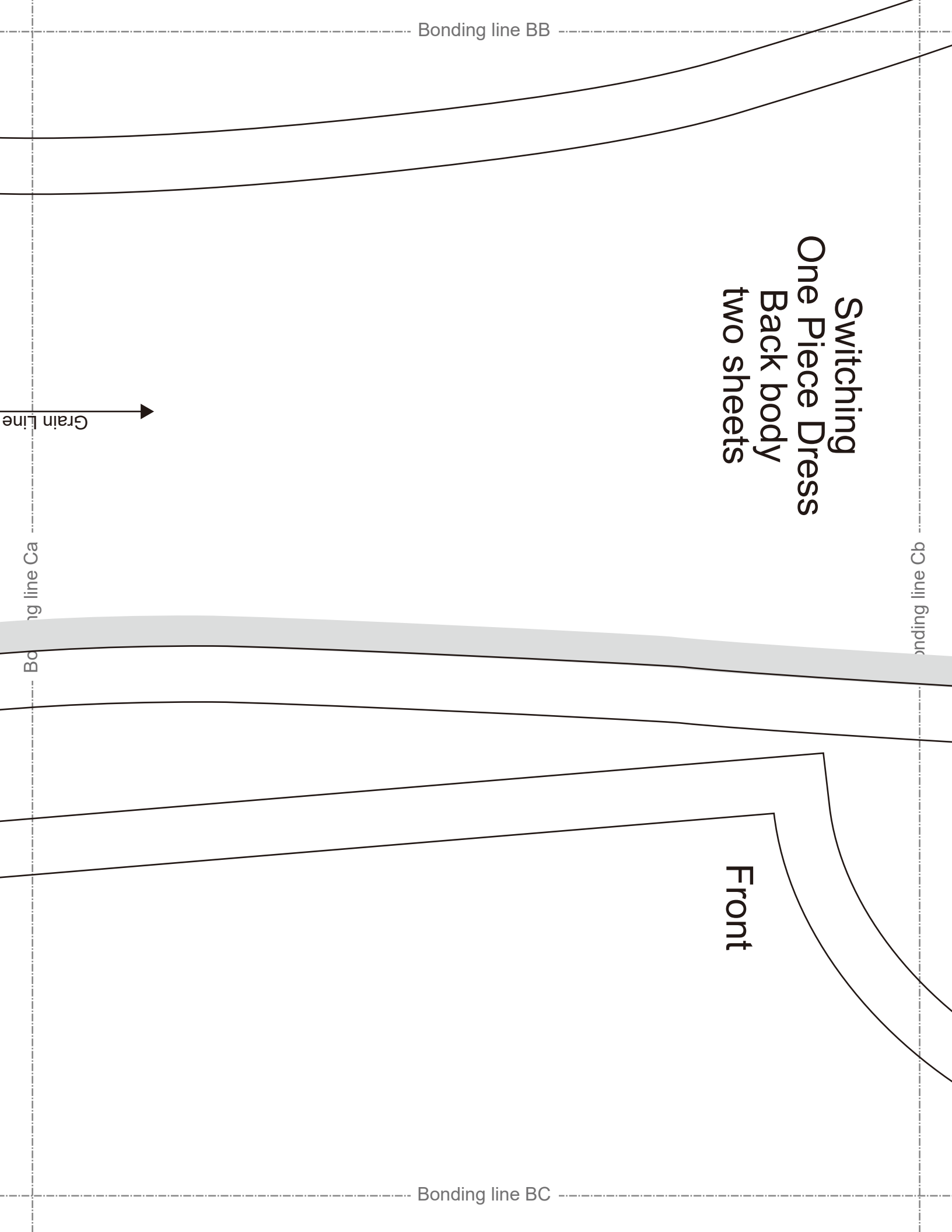
**Front**

Bonding line BB

Bonding line Cb

Bonding line BC

Bonding line Ca



Bonding line BC



Switching  
One Piece Dress  
Sleeve  
two sheets

Bonding line Da

Bonding line Db

Back

Bonding line BD



# LADIES'



Facing Line

Bonding line Ab

Bonding line Ac

Bonding line CA

Bonding line CA

Switching  
One Piece Dress  
Back Facing two sh  
Fusible interlining two

Grain Line

Seam allowance 1/2in.

Bonding line Bb

Bonding line Bc

Bonding line CB

**DRO**  
SITE <http://dro-pos.info/>  
MAIL [info@dro-pos.com](mailto:info@dro-pos.com)  
Twitter [https://twitter.com/dro\\_pos](https://twitter.com/dro_pos)  
facebook [https://www.facebook.com/dro\\_pos](https://www.facebook.com/dro_pos)

DRCCOS

<http://drccos.info/en> | <http://drccos.com/jp>  
info@drccos.com  
or [https://twitter.com/drccos\\_com](https://twitter.com/drccos_com)  
book <https://www.facebook.com/drccoscom>

Bonding line CB

LADIES'



Facing Line

Fusible Stay tape

Bonding line Cc

Bonding line CC

Bonding line Cb

Bonding line CC



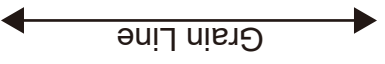
Bonding line Db

Bonding line Dc

Bonding line CD



# Switching One Piece Dress Front body hem one sheets



Seam allowance 1/2in.

Bonding line Ac

Bonding line DA

**DRCOS**  
 SITE <http://dr-cos.info/en> | <http://dr-cos.com/jp>  
 MAIL [info@dr-cos.com](mailto:info@dr-cos.com)  
 T twitter [https://twitter.com/drcos\\_com](https://twitter.com/drcos_com)  
 facebook <https://www.facebook.com/drcoscom>

Bonding line DA

ng  
Dress  
two sheets  
two sheets

Bonding line Bc



Bonding line Bd

Bonding line DB

# Switching One Piece Dress Back body side hem two sheets



Seam allowance 1/2in.

**DRCOS**  
SITE <http://dr-cos.info/en> <http://dr-cos.com/jp>  
MAIL [info@dr-cos.com](mailto:info@dr-cos.com)  
Twitter [@drcos\\_com](https://twitter.com/@drcos_com)  
facebook <https://www.facebook.com/drcos.com>

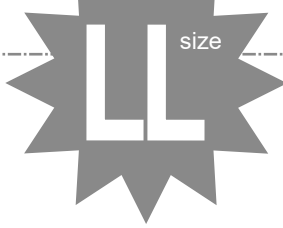


Bonding line Cc

Bonding line Cd

Bonding line DB

Bonding line DC



Bonding line DC

# LADIES'

Switching  
One Piece Dress  
Back body hem  
two sheets



**DRCOS**

SITE [http://dr-cos.info\(en\)](http://dr-cos.info(en)) [http://dr-cos.com\(jp\)](http://dr-cos.com(jp))  
MAIL [info@dr-cos.com](mailto:info@dr-cos.com)  
Twitter [@drcos\\_com](https://twitter.com/@drcos_com)  
facebook <https://www.facebook.com/drcoscom>

Seam allowance 1/2in.

Bonding line DD

Bonding line Dc

Bonding line Dd



Bonding line Ad

# LADIES'



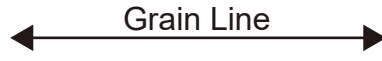
**DRCOS**  
SITE <http://dr-cos.info/en> <http://dr-cos.com/jp>  
MAIL [info@dr-cos.com](mailto:info@dr-cos.com)  
Twitter [https://twitter.com/dr-cos\\_com](https://twitter.com/dr-cos_com)  
facebook <https://www.facebook.com/drcoscom>

Bonding line EA

Bonding line Ae

Switching  
One Piece Dress  
Front body side hem  
two sheets

Bonding line EA



Seam allowance 1/2in.

Bonding line Bd

Bonding line Be

Bonding line EB

Bonding line EB

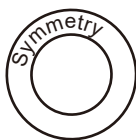
# LADIES'



Bonding line Cd

Bonding line Ce

**Switching**  
**One Piece Dress**  
Front Facing one sheets  
Fusible interlining one sheets



Symmetry

Seam allowance 1/2in.

Bonding line EC