

Bonding line AA

Switching
One Piece Dress
Back body
two sheets

ens

Children's



Fusible Stay tape

Bonding line Ba

facebook <https://www.facebook.com/drcos.com>
Twitter https://twitter.com/drcos_com
MAIL info@drcos.com
SITE [http://drcos.info\(en\)](http://drcos.info(en)) [http://drcos.com\(fp\)](http://drcos.com(fp))

DRCOS

Facing Line

Bonding line AB

Bonding line AB

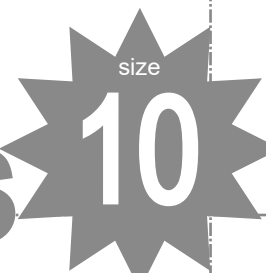
DRCOS

SITE [http://dr-cos.info\(en\)](http://dr-cos.info(en)) [http://dr-cos.com\(jp\)](http://dr-cos.com(jp))
MAIL info@dr-cos.com
Twitter https://twitter.com/drcos_com
facebook <https://www.facebook.com/drcoscom>

Bonding line Ca

Front

Children's



Bonding line AC

Switching
One Piece Dress
Sleeve
two sheets



Seam allowance 1/2in.

Bonding line AD

Bonding line Da

Seam allowance 1/2in.

SITE <http://dr-cos.info/en> <http://dr-cos.com>
MAIL info@dr-cos.com
Twitter <https://twitter.com/dr-cos>
facebook <https://www.facebook.com/dr-cos>

DRCO

Switching
One Piece Dress
Back body side
two sheets

Bonding line Aa

Grain Line

Bonding line BA

Seam allowance 1/2in.

SITE <http://dr-cos.info/en> <http://dr-cos.com>
MAIL info@dr-cos.com
Twitter <https://twitter.com/dr-cos>
facebook <https://www.facebook.com/dr-cos.com>

DRCOS

Switching
One Piece Dress
Front body side
two sheets

Bonding line Ab

Grain Line

Bonding line BA

Children

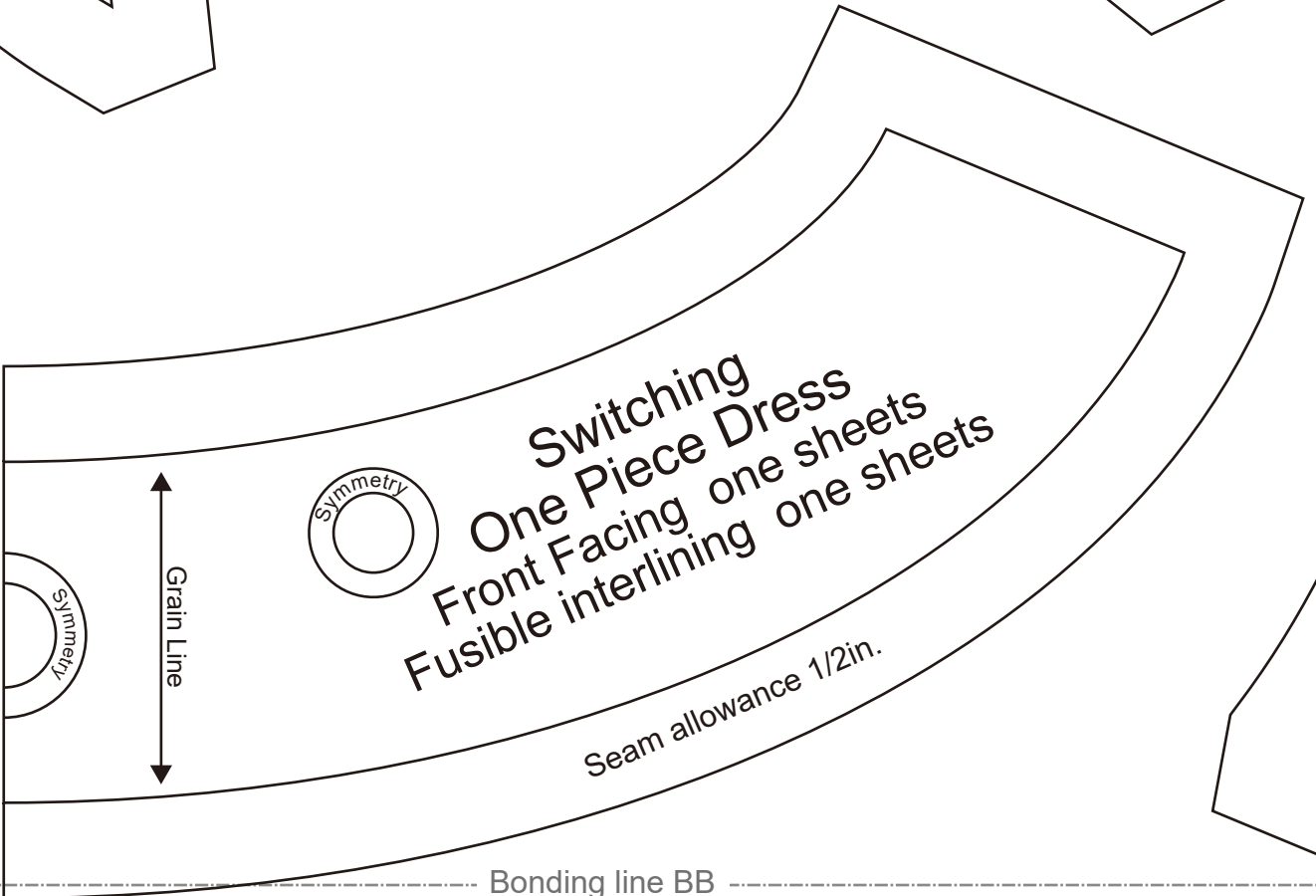


Children's



Bonding line Ba

Bonding line Bb



Bonding line BB

Bonding line BB

Seam allowance 1/2in.



DRCOS
SITE [http://dr-cos.info\(en\)](http://dr-cos.info/en) [http://dr-cos.com\(jp\)](http://dr-cos.com(jp))
MAIL info@dr-cos.com
Twitter <https://twitter.com/dr-cos>
facebook <https://www.facebook.com/drcoscom>

Bonding line Ca

Bonding line Cb

Switching
Piece Dress
body side hem
wa sheets

Back

Children's



Bonding line BC





Bonding line Da

Bonding line BC

Bonding line Db

Seam allowance 1/2in.

DRCOS
SITE <http://drcos.info/en/> <http://drcos.com/jp/>
MAIL info@drcos.com
Twitter <https://twitter.com/drcos.com>
facebook <https://www.facebook.com/drcos.com/>

Bonding line BD

Seam

Seam allowance 1/2in.

SITE <http://dr-cos.info/en> [http://dr-cos.com\(fp\)](http://dr-cos.com(fp))
MAIL info@dr-cos.com
Twitter https://twitter.com/dr-cos_com
facebook <https://www.facebook.com/dr-cos.com>

DRCOS

Grain Line

Bonding line Ab

Bonding line Ac

SW
One P
Front
two

Bonding line CA



Bonding line CA



Switching
One Piece Dress
Front body
one sheets



Children's



Facing Line

Bonding line CB

Bonding line Bc

Bonding line Bb

Chil



Bonding line CB

Seam al



Children's

Bonding line C

Bonding line Cb

Switch
One Piece
Front body
two s

Children's



Grain Line

Switch
One Piece
Back Facing
Fusible interlin

Seam allowance 1/2

Bonding line C

Switching
One Piece Dress
Facing two sheets
Lining two sheets

Finished length 1 1/2 in.

Bonding line C

Bonding line Dc

Children's



Switching
One Piece Dress
Back body hem
two sheets

Bonding line Db

Grain Line

Bonding line CD

DRCS
SITE #1111

Children's

Switching
One Piece Dress
Back body side hem
two sheets

Grain Line

Seam allowance 1/2in.

DRCOS
SITE <http://dr-cos.info/en>
MAIL info@dr-cos.com
Twitter <https://twitter.com/dr-cos.jp>
facebook <https://www.facebook.com/drcoscom>

Seam allowance 1/2in.
Bonding line DC

Bonding line DB

Bonding line Cc

Bonding line Cd

Seam allowance 1/2 in.
Bonding line DC

facebook <https://www.facebook.com/drcos.com>
Twitter <https://twitter.com/drcos.com>
MAIL info@drcos.com
SITE <http://drcos.info/en> <http://drcos.com/jp>

DRCOS

Switching
One Piece Dress
Front body hem
one sheets



Children's



Bonding line Dc

Bonding line Dd

Bonding line DD