

[Home](#)

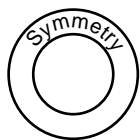
[Back to Squareneckblouse page](#)

Facing Line

Bonding line Aa



Children's

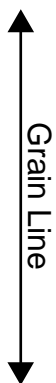


Squar neck blouse2
Back Body
one sheets

Bonding line AA

size

Bonding line AA



Seam allowance 1/2in.

Bonding line Ba

DRCOS

SITE [http://dr-cos.info\(en\)](http://dr-cos.info(en)) [http://dr-cos.com\(jp\)](http://dr-cos.com(jp))
MAIL info@dr-cos.com
Twitter [@drcos_com](https://twitter.com/@drcos_com)
facebook <https://www.facebook.com/drcoscom>

Bonding line AB

Bonding line Aa



Children's

neck blouse 2
two sheets
lining two sheets

Bonding line

want 1/2in.

Bonding line Ab



Bonding line Ba

Squar neck
Facing two
Fusible interlinin



Bonding line A

Seam allowance 1/2in.

DRCOS

SITE [http://dr-cos.info\(en\)](http://dr-cos.info(en)) [http://dr-cos.com\(jp\)](http://dr-cos.com(jp))
MAIL info@dr-cos.com
Twitter https://twitter.com/@drcos_com
facebook <https://www.facebook.com/drcoscom>

Seam allowance 1/2in.



Bonding line Bb

size

8

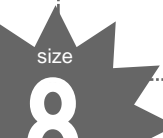
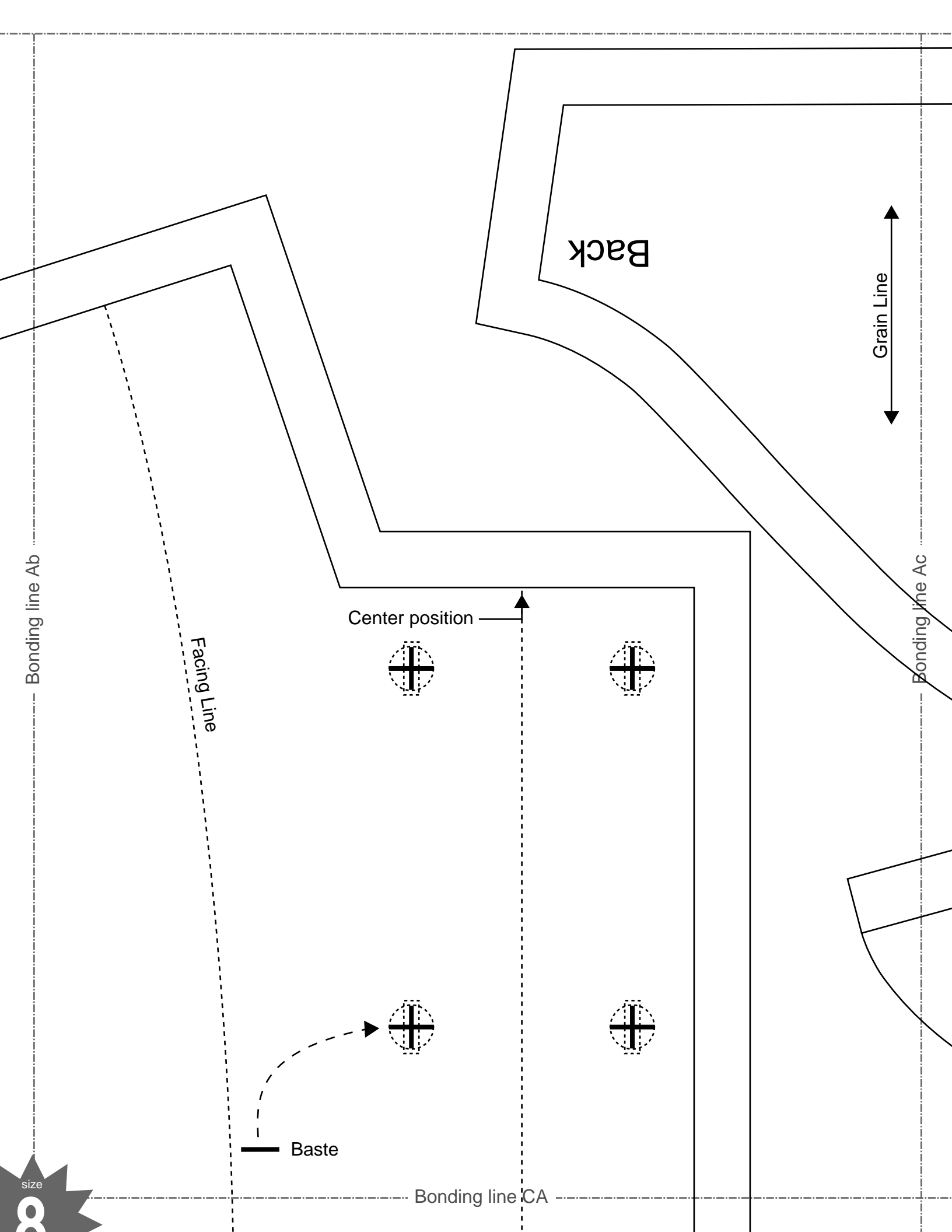
Childr

Squar neck
Front B
Two she

DRCOS

SITE [http://dr-cos.info\(en\)](http://dr-cos.info(en)) [http://dr-cos.com\(jp\)](http://dr-cos.com(jp))
MAIL info@dr-cos.com
Twitter https://twitter.com/@drcos_com
facebook <https://www.facebook.com/drcoscom>

Bonding line BB



size

8

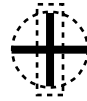
dren's

neck blouse 2
nt Body
o sheets

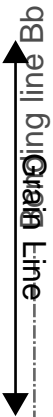
Bonding line CA



Button position



Bonding line Bb



Bonding line Bc

Bonding line CB

Seam allowance 1/2in.

Squar neck blouse2
Sleeve
two sheets

Front

Children's



DRCOS
SITE <http://dr-cos.info/en> [\(fp\)](http://dr-cos.com(fp))
MAIL info@dr-cos.com
Twitter https://twitter.com/dr-cos_com
facebook <https://www.facebook.com/drcoscom>

Bonding line Ac

Bonding line Ad

Seam allowance 1/2in.

Grain Line



Squar neck blouse2
Facing two sheets
Fusible interlining two sheets

DRCOS
SITE <http://dr-cos.info/en> [\(fp\)](http://dr-cos.com(fp))
MAIL info@dr-cos.com
Twitter https://twitter.com/dr-cos_com
facebook <https://www.facebook.com/drcoscom>

Bonding line DA