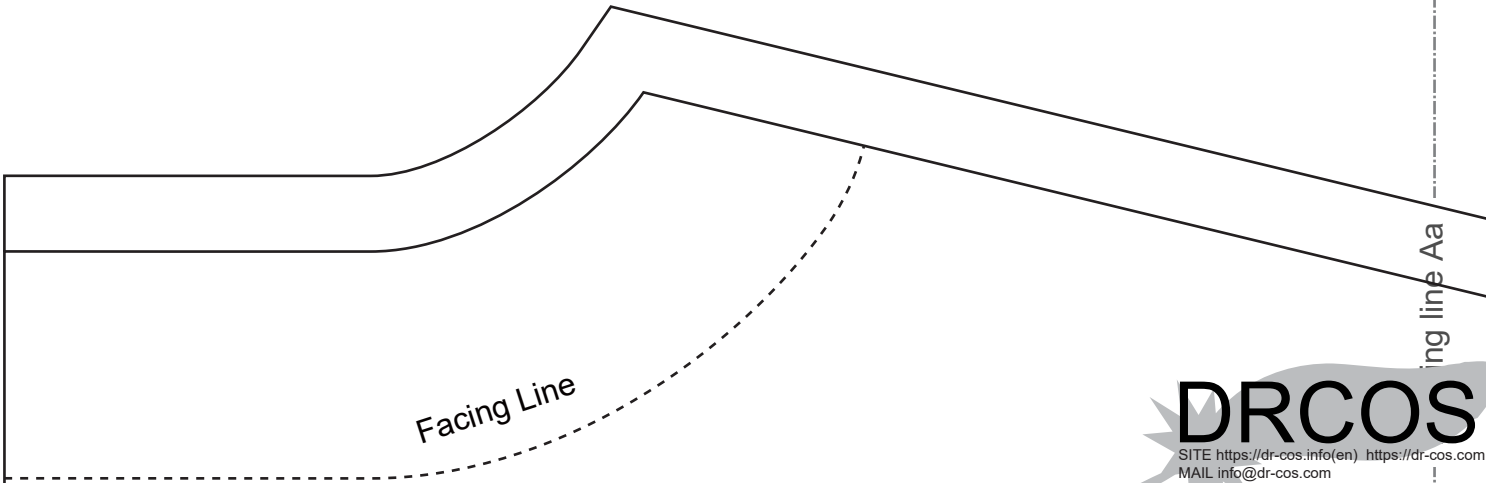


Seam allowance 1cm

Grain Line

MEN'S size **S**

Sh
Fa
Fusible



Facing Line

Bonding line AA

DRCOS

SITE <https://dr-cos.info/en> <https://dr-cos.com>
MAIL info@dr-cos.com
Twitter [@drcos_com](https://twitter.com/@drcos_com)
pinterest <https://www.pinterest.jp/drcosinfo>

Bonding line AA

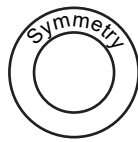
What is "Grainline" cut on fold"?

Please refer to this page

<https://www.dr-cos.info/kt-grainline.html>



MEN'S size **S**



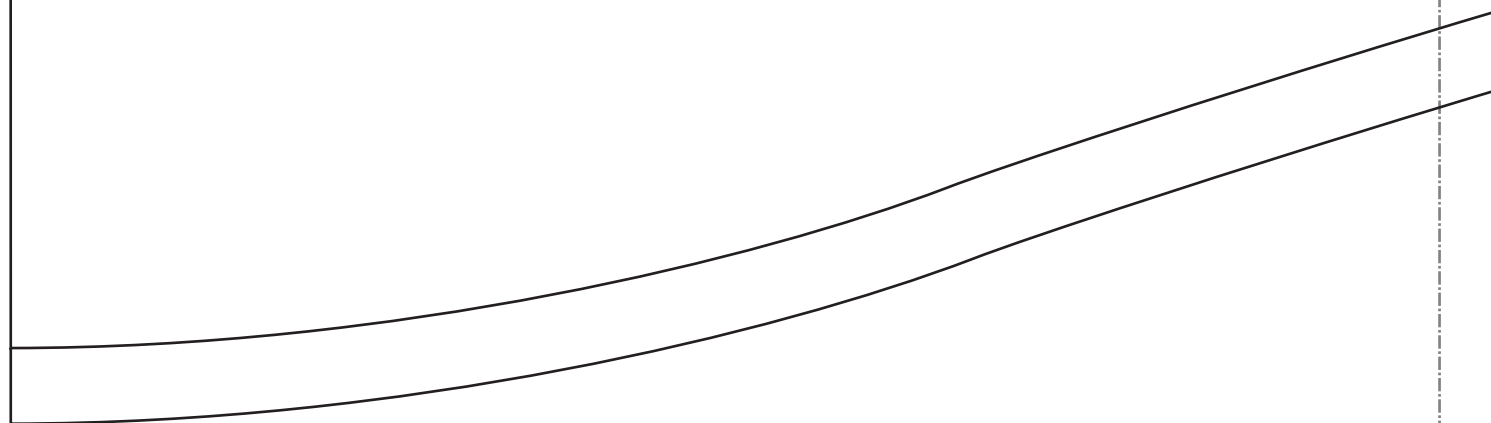
Shawl collar blouse2
Back Body
one sheets

Bonding line AB



Bonding line Ca

Bonding line AC



ance 1cm

Shawl collar blouse2
Facing two sheets
visible interlining two sheets

ing line Aa
OS
ps://dr-cos.com(jp)
cos.com
jp/drcosinfo

Front

ng machine & overlock sewing machine).



Binding line BA

Binding line Ab

M

Bonding line Ba



How to Serge/overlock (sewing machine)
Please refer to this page
<https://www.dr-cos.info/kt-serge.html>

Bonding line BB

Bonding line BA

Please check the
required fabric
cutting reference
and the steps
<https://dr-cos.info>



Bonding line Bb

S

Bonding line BB

Seam allowance 1cm



Shawl collar
two s
Fusible i
two s

Bonding line Ca

Bonding line Cb

Bonding line BC

DRCOS

SITE [https://dr-cos.info\(en\)](https://dr-cos.info(en)) [https://dr-cos.com\(jp\)](https://dr-cos.com(jp))

MAIL info@dr-cos.com

Twitter [@drcos_com](https://twitter.com/@drcos_com)

pinterest <https://www.pinterest.jp/drcosinfo>

Bonding line Ab

Bonding line Ac

Back

MEN'S size S

Bonding line CA

Bonding line CA

Shawl collar blouse2 Sleeve two sheets

Bonding line Bb

Bonding line Bc

Please check here for the
required fabric length images,
cutting reference images,
and the step-by-step sewing instructions.
<https://dr-cos.info/fp-shawlcollarblouse2.html>



Bonding line CB

Bonding line CB

Seam allowance 1cm

MEN'S size **S**

DRCOS
SITE [https://dr-cos.info\(en\)](https://dr-cos.info/en) [https://dr-cos.com\(jp\)](https://dr-cos.com/jp)
MAIL info@dr-cos.com
Twitter [@drcos_com](https://twitter.com/@drcos_com)
pinterest <https://www.pinterest.jp/drcosinfo>

collar blouse2
Cuffs
two sheets
ble interlining
two sheets

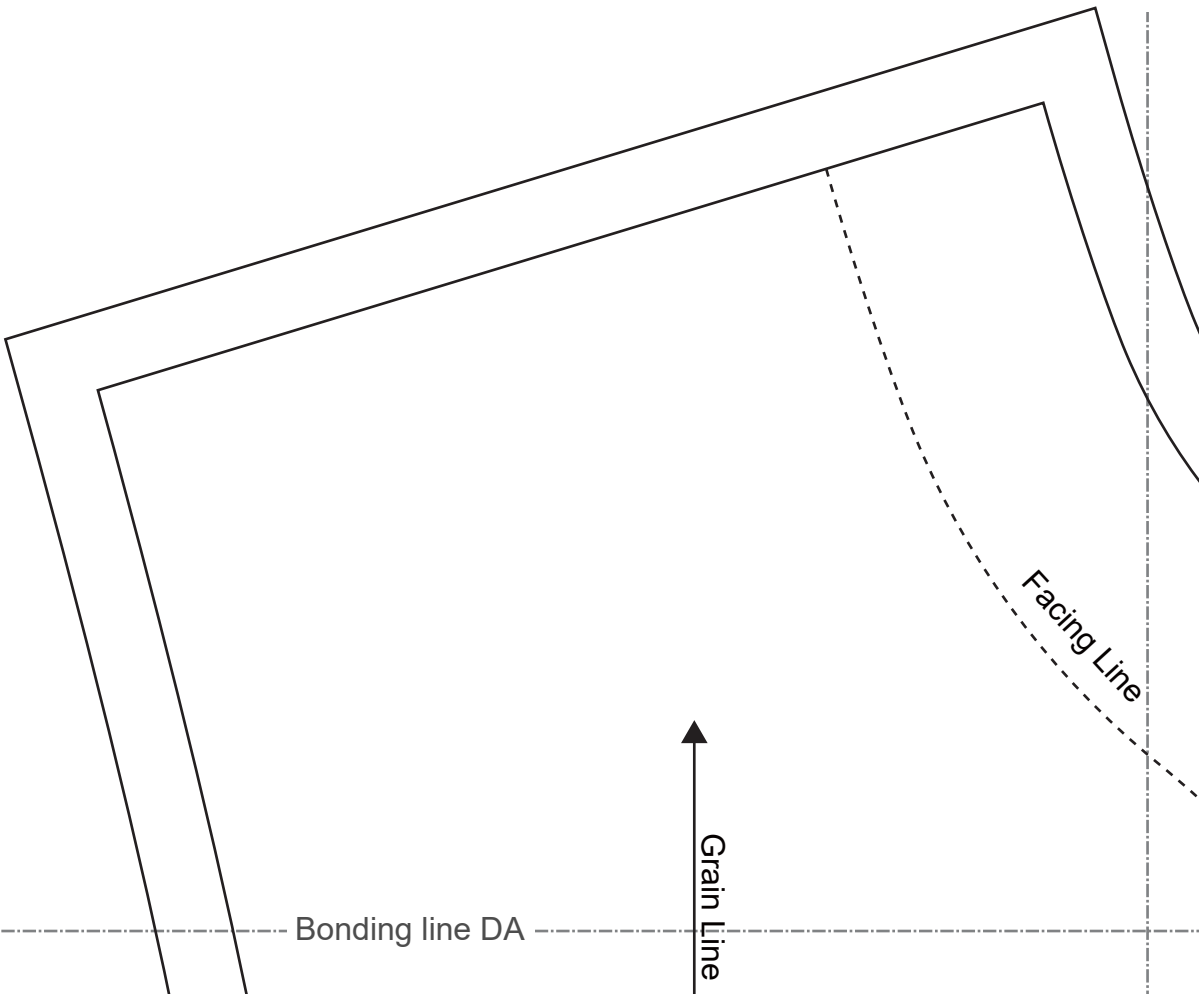
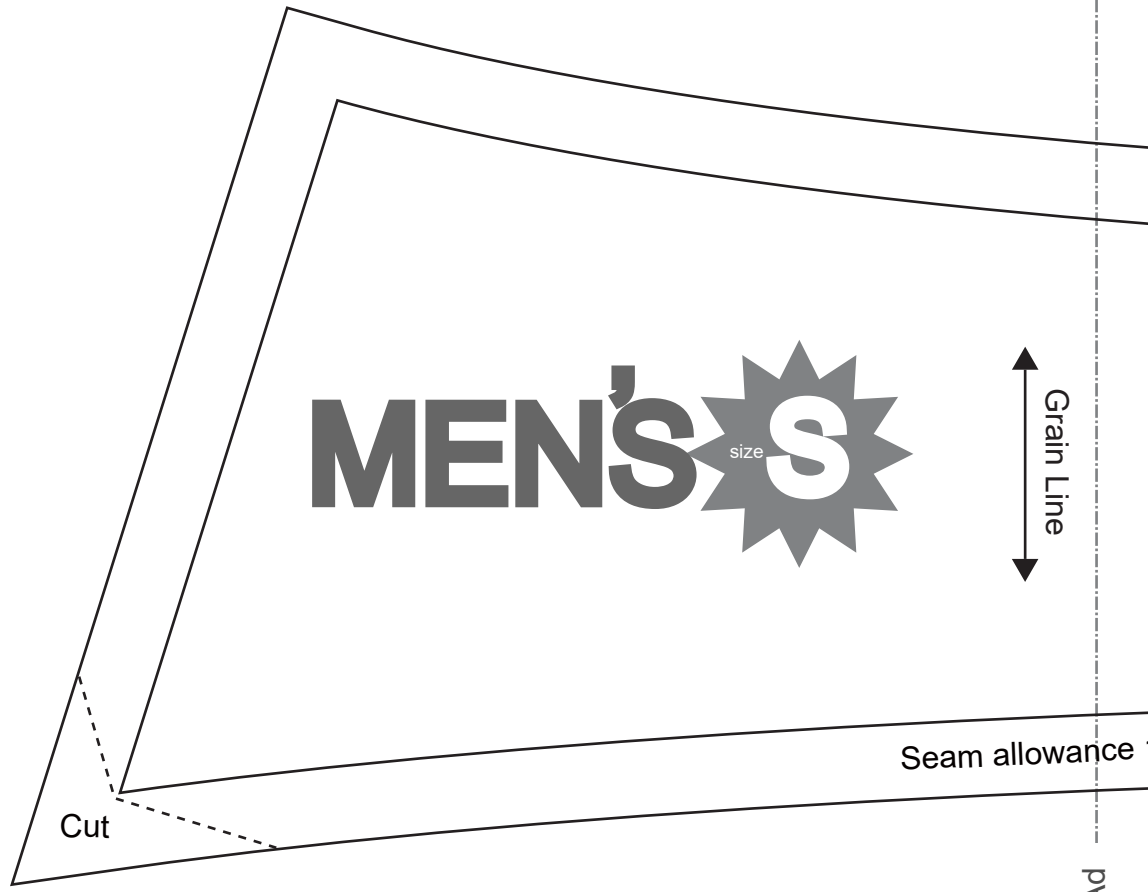


How to sew sleeves and sleeve cuffs.
Please refer to this page
<https://www.dr-cos.info/kt-cuffs.html>

Seam allowance 1cm

Bonding line CC

Bonding line Ac
Back



Bonding line DA



Baste 

Bonding line Bc

Bonding line Bd

MEN'S  **S**
size

Shawl collar blouse2
Front Body
Two sheets

Bonding line DB

Bonding line DB

Bonding line Cc

Seam allowance 1cm



How to make collar.
Please refer to this page
<https://www.dr-cos.info/kt-collar.html>



How to sew on buttons.
Please refer to this page
<https://www.dr-cos.info/kt-button.html>



How to make buttonholes.
Please refer to this page
<https://www.dr-cos.info/kt-buttonhole.html>

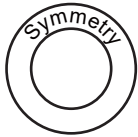


How to sew Facing and Hem.
Please refer to this page
<https://www.dr-cos.info/kt-facingandhem.htm>

Bonding line Cd

Bonding line DC

Grain Line

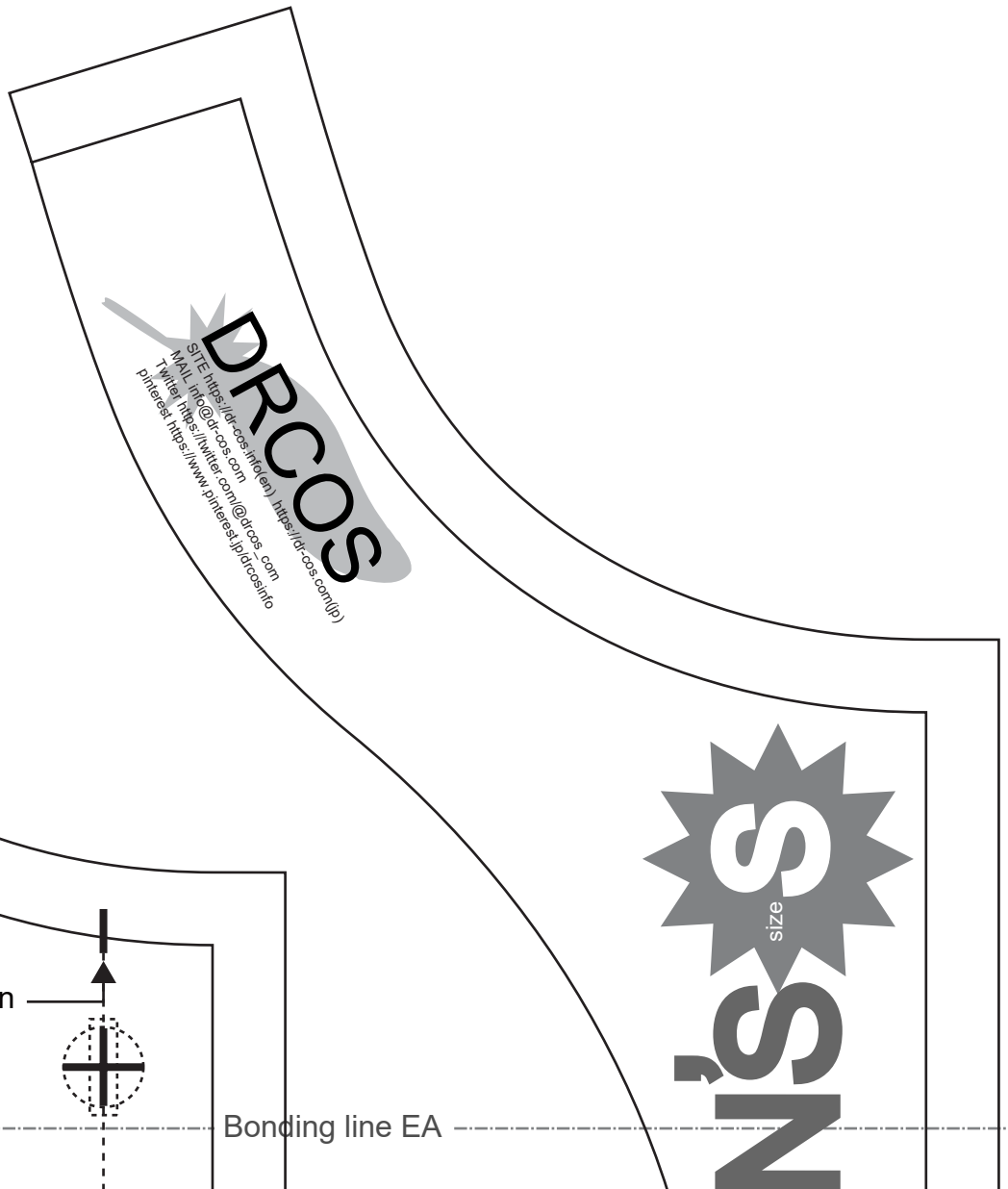


Shawl collar blouse2
Collar
one sheets
Fusible interlining
one sheets



Wance 1cm

Bonding line Ad



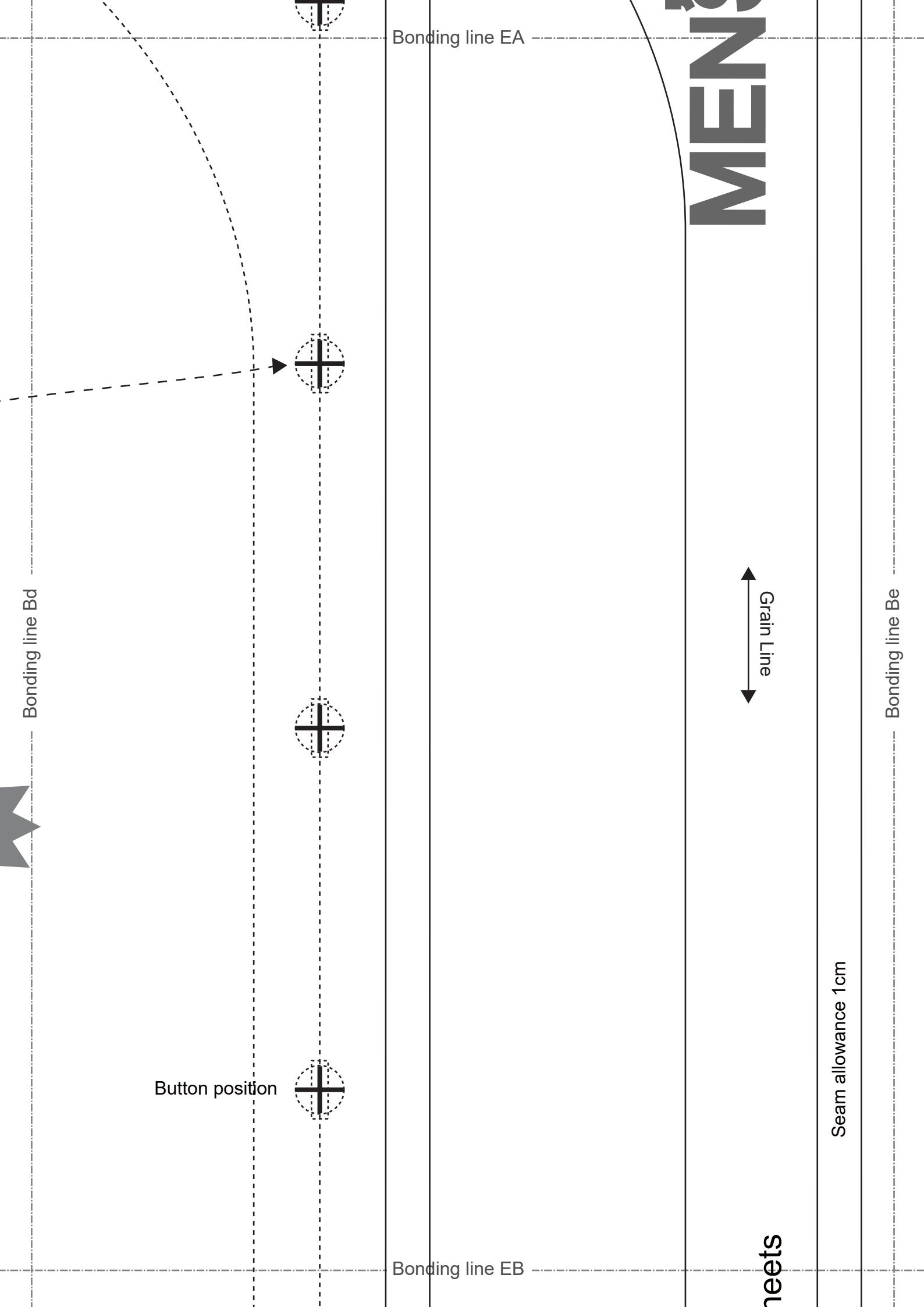
Bonding line Ae

Collar position



Bonding line EA





em.html

htm

Bonding line Cd



Bonding line EC

Bonding line EB

Shawl collar blouse2

Facing two sheets

Fusible interlining two sheets

Bonding line Ce