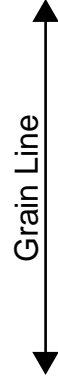


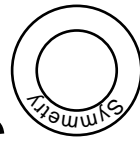
[Home](#)

[Back to Sailorcollarblouse page](#)

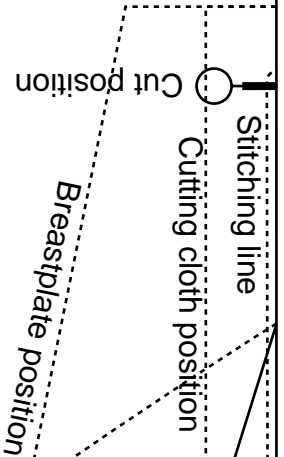
Seam allowance 1/2in.



Sailorcollarblouse
Front Body
one sheets



Children's
size 4



Bonding line AA

Bonding line Aa

Bonding line AA

Collar position

Snap button position

[SITE http://dr-cos.info/en](http://dr-cos.info/en) <http://dr-cos.com/pt>
[MAIL info@dr-cos.com](mailto:info@dr-cos.com)
[Twitter https://twitter.com/drcos_com](https://twitter.com/drcos_com)
[facebook https://www.facebook.com/drcoscom](https://www.facebook.com/drcoscom)

DRCOS

Bonding line Ba

Seam allowance 1/2in.



Snap button position



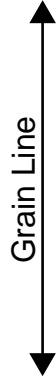
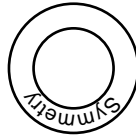
Sailorcollarblouse
Breastplate
 two sheets
Fusible interlining
 one sheets



Bonding line AB

Bonding line Aa

Sailorcollarblouse
Back Body
one sheets



DRCOS
SITE [http://drcos.info\(en\)](http://drcos.info(en)) [http://drcos.com\(jp\)](http://drcos.com(jp))
MAIL info@drcos.com
Twitter <https://twitter.com/drcos>
facebook <https://www.facebook.com/drcoscom>

Seam allowance 1/2in.

Children's
SIZE 4



Bonding line BA



Bonding line Ab



Bonding line BA

Bonding line Ba

Bonding line Bb

Baste



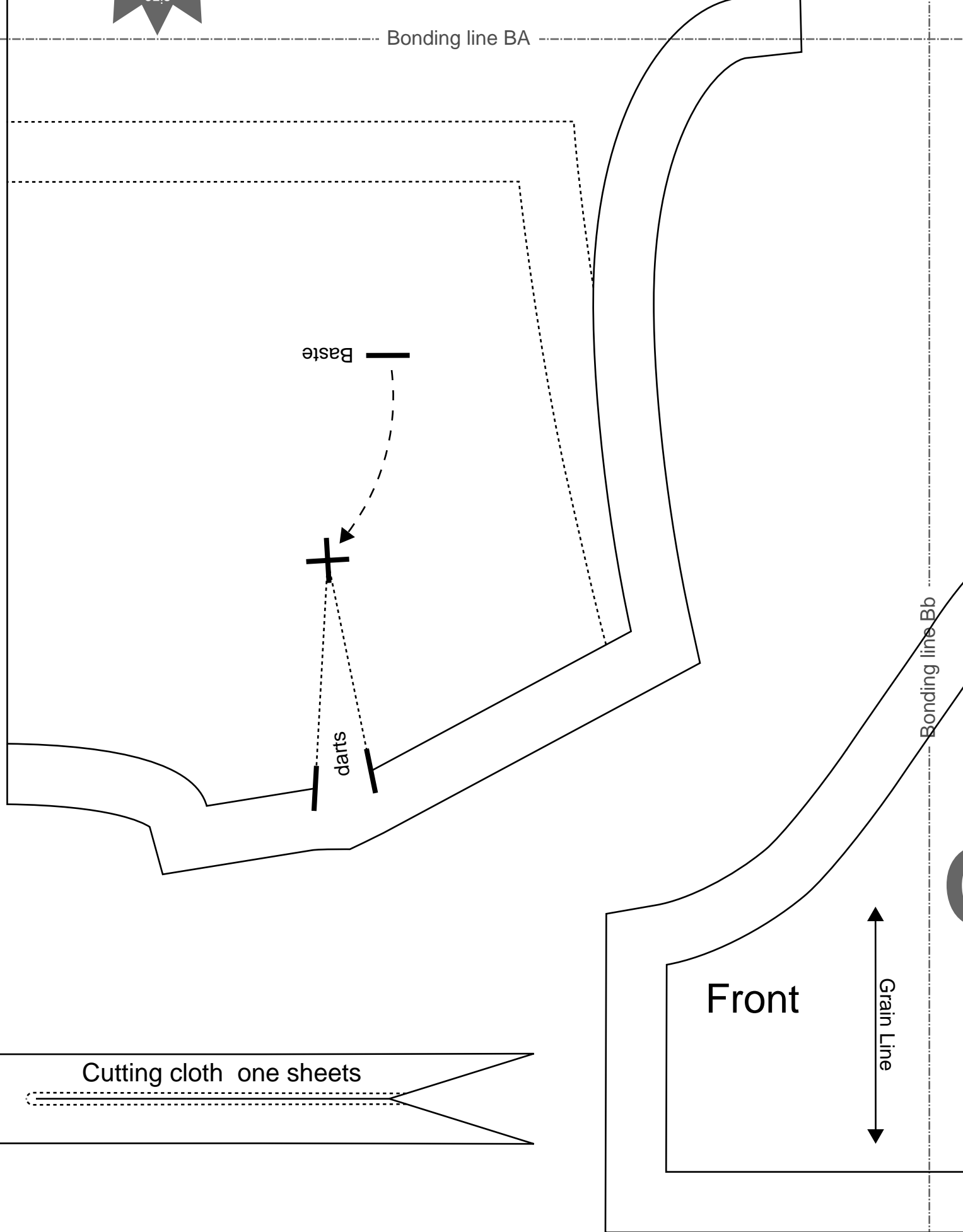
darts

Front

Grain Line

Cutting cloth one sheets

Bonding line BB



Bonding line A

size 4 Children's

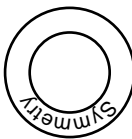
DRCOS
SITE <http://dr-cos.info/en> <http://dr-cos.com/jp>
MAIL info@dr-cos.com
Twitter https://twitter.com/@dr-cos_com
facebook <https://www.facebook.com/drcoscom>

Grain Line

Bonding line CA

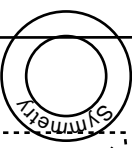
Collar line position

Sailor collar blouse
Collar
two sheets
Fusible interlining
one sheets



Seam allowance 1/2in.

Sailor collar blouse
Collar line
one sheets



Cut

Grain Line

Seam allowance 1/2in.

size 4 Children's

Children's

Bonding line Ac

Bonding line CA

ch

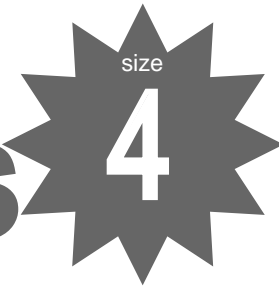
Bonding line Bb

Bonding line Bc

DRCOS

SITE [http://dr-cos.info\(en\)](http://dr-cos.info(en)) [http://dr-cos.com\(jp\)](http://dr-cos.com(jp))
MAIL info@dr-cos.com
Twitter https://twitter.com/@drcos_com
facebook <https://www.facebook.com/drcoscom>

Children's



**Sailorcollarblouse
Sleeve
two sheets**

Back

Seam allowance 1/2in.

Bonding line CB