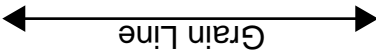


[Home](#)

[Back to Roundneckblouse page](#)

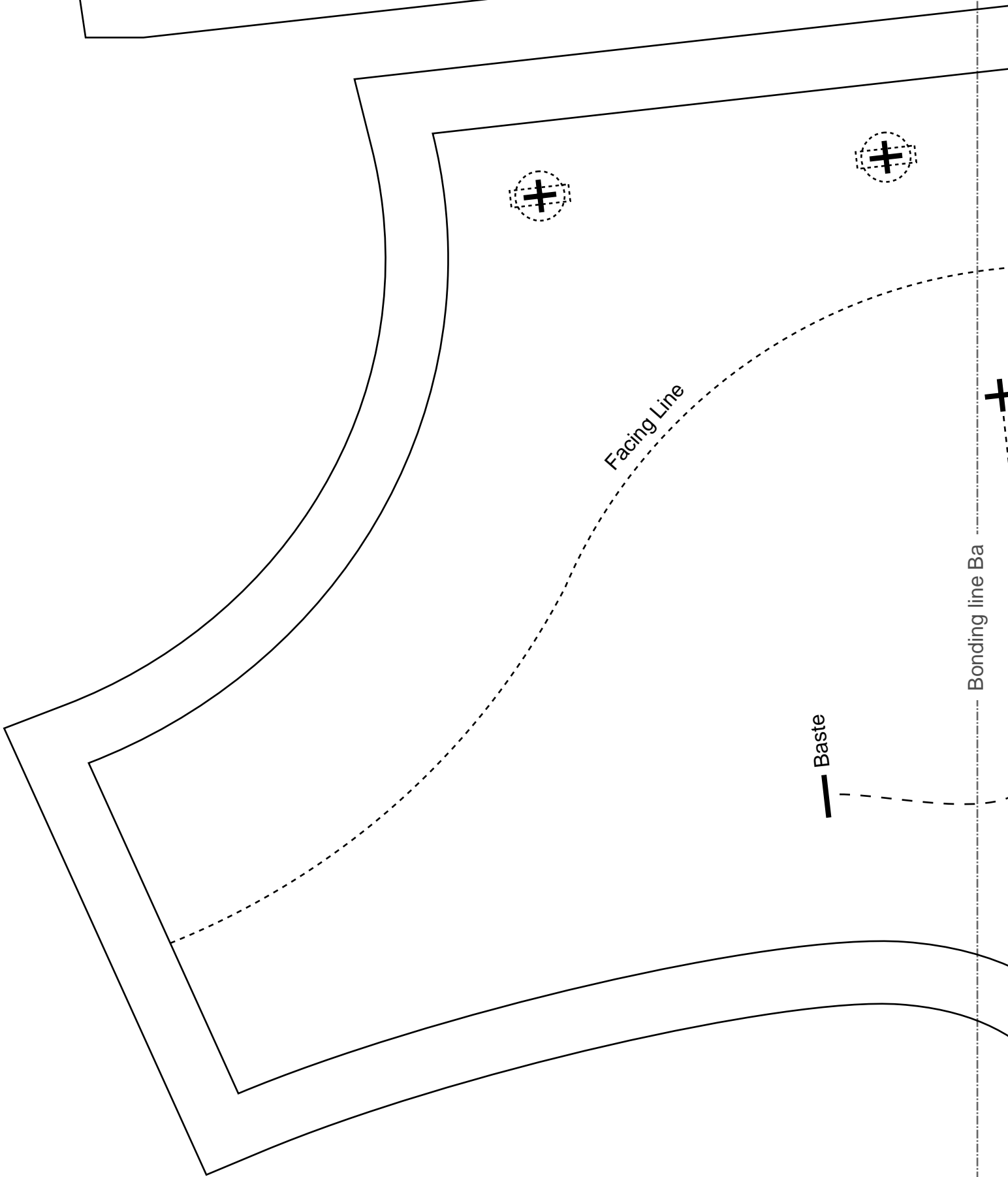


Bonding line Aa

Bonding line AA

1/2in.

Bonding line AA



Facing Line

Baste

Bonding line Ba

Bonding line AB

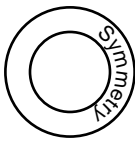
Bonding line Aa

Bonding line Ab



LADIES'S size

Round neck blouse
Back Body
one sheets



Seam allowance 1/2in.

Bonding line BA

Bonding line BA

Bonding line Ba

Pocket position

Button position

DRCOS
 SITE <http://dr-cos.info/en> <http://dr-cos.com/jp>
 MAIL info@dr-cos.com
 Twitter <https://twitter.com/dr-cos>
 facebook <https://www.facebook.com/drcos.com>

LADIES'S ^{size}

Round neck blouse
 Front Body

Seam allowance 1/2in.

Bonding line BB

Bonding line Ab

Bonding line Ac

Facing Line



SITE <http://dr-cos.info/en/> <http://dr-cos.com/jp/>
MAIL info@dr-cos.com
Twitter <https://twitter.com/dr-cos.com/>
facebook <https://www.facebook.com/dr-cos.com/>

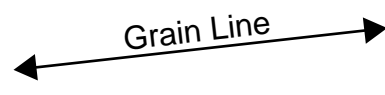
Bonding line CA



Round neck blouse
Front Body
Two sheets



Bonding line CA



Grain Line

Bonding line Bc

Bonding line CB

Advance 1/2in.

neck blouse
Sleeve
o sheets

Back



Bonding line Ac

Bonding line Ad

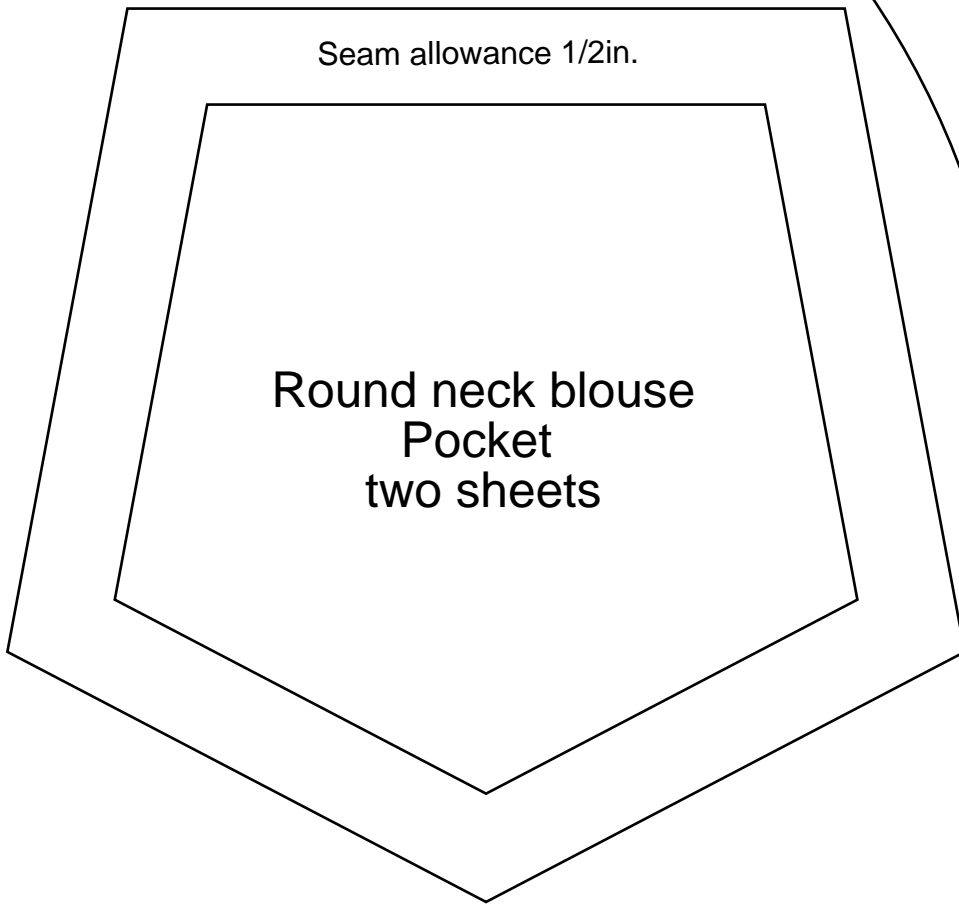
rcos.com
http://dr-cos.com (p)
rcos.com
twitter.com/dr-cos
www.facebook.com/dr-cos.com

RCOS

Bonding line DA

Bonding line DA

Bonding line Bc

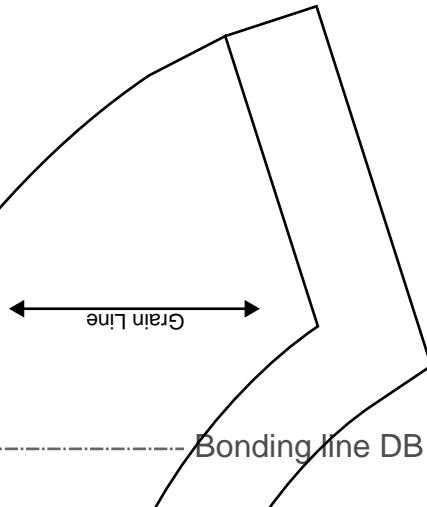


LADIES'S
size

**Round neck blouse
Facing two sheets
the interlining two sheets**

Seam allowance 1/2in.

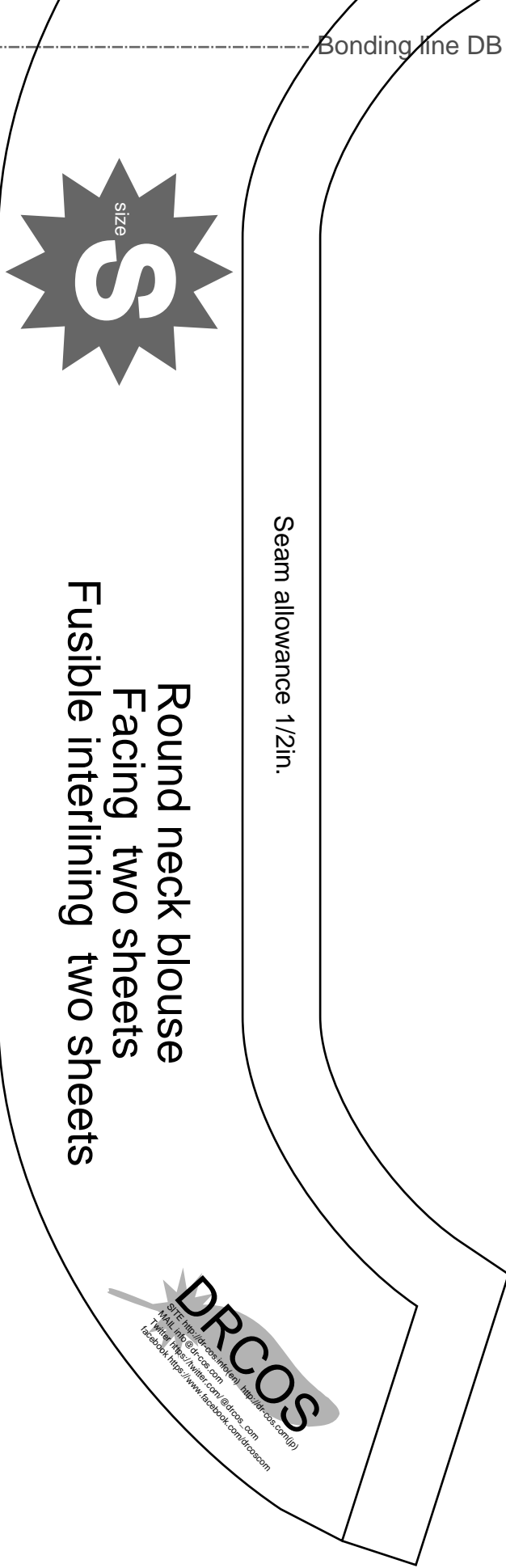
Bonding line Bd



Bonding line DB

Bonding line Cc

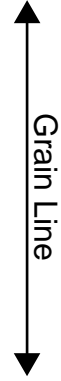
Bonding line DB



Round neck blouse
 Facing two sheets
 Fusible interlining two sheets

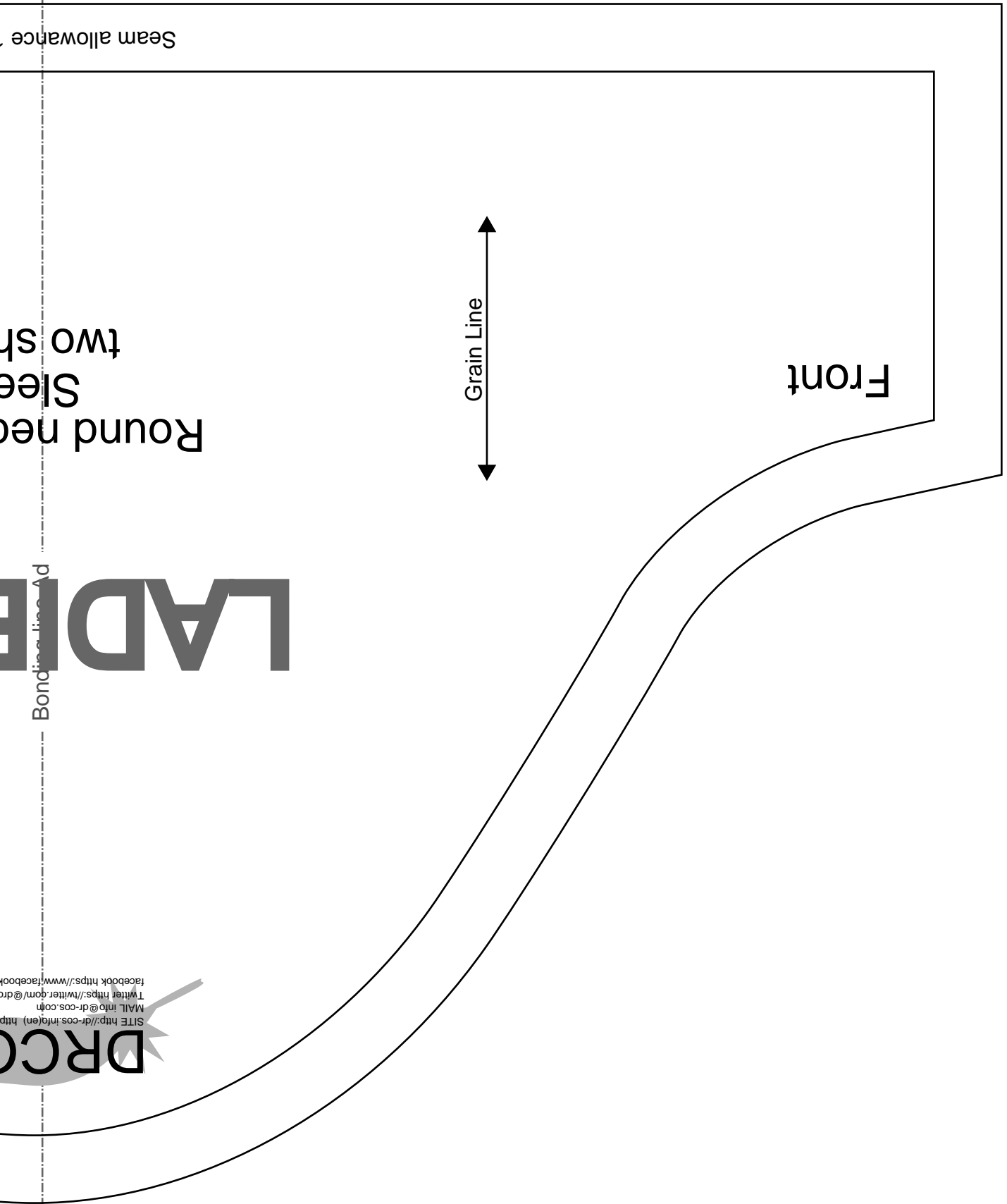


Round
 Facing
 Fusible interlining



Bonding line Cd

Bonding line DC



Round neck
Sleeve
two sh

LADIR

DRCC

SITE <http://dr-cos.info/en> <http://dr-cos.com>
MAIL info@dr-cos.com
Twitter <https://twitter.com/drcc>
facebook <https://www.facebook.com/drcc>

Bonding line Ad

Bonding line EA

Bonding line Ae