

[Home](#)

[Back to Roundneckblouse page](#)

Facing Line



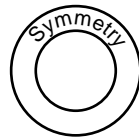
Bonding line Aa

Bonding line AA

Bonding line AA

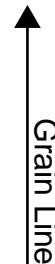
LADIES' size

Round neck blouse
Back Body
one sheets



Bonding line Ba

Bonding line AB



Bonding line AB

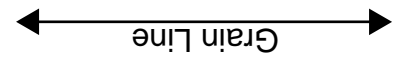


Bonding line Ca



DRCOS

SITE [http://dr-cos.info\(en\)](http://dr-cos.info(en)) [http://dr-cos.com\(jp\)](http://dr-cos.com(jp))
MAIL info@dr-cos.com
Twitter [@drcos_com](https://twitter.com/@drcos_com)
facebook <https://www.facebook.com/drcoscom>



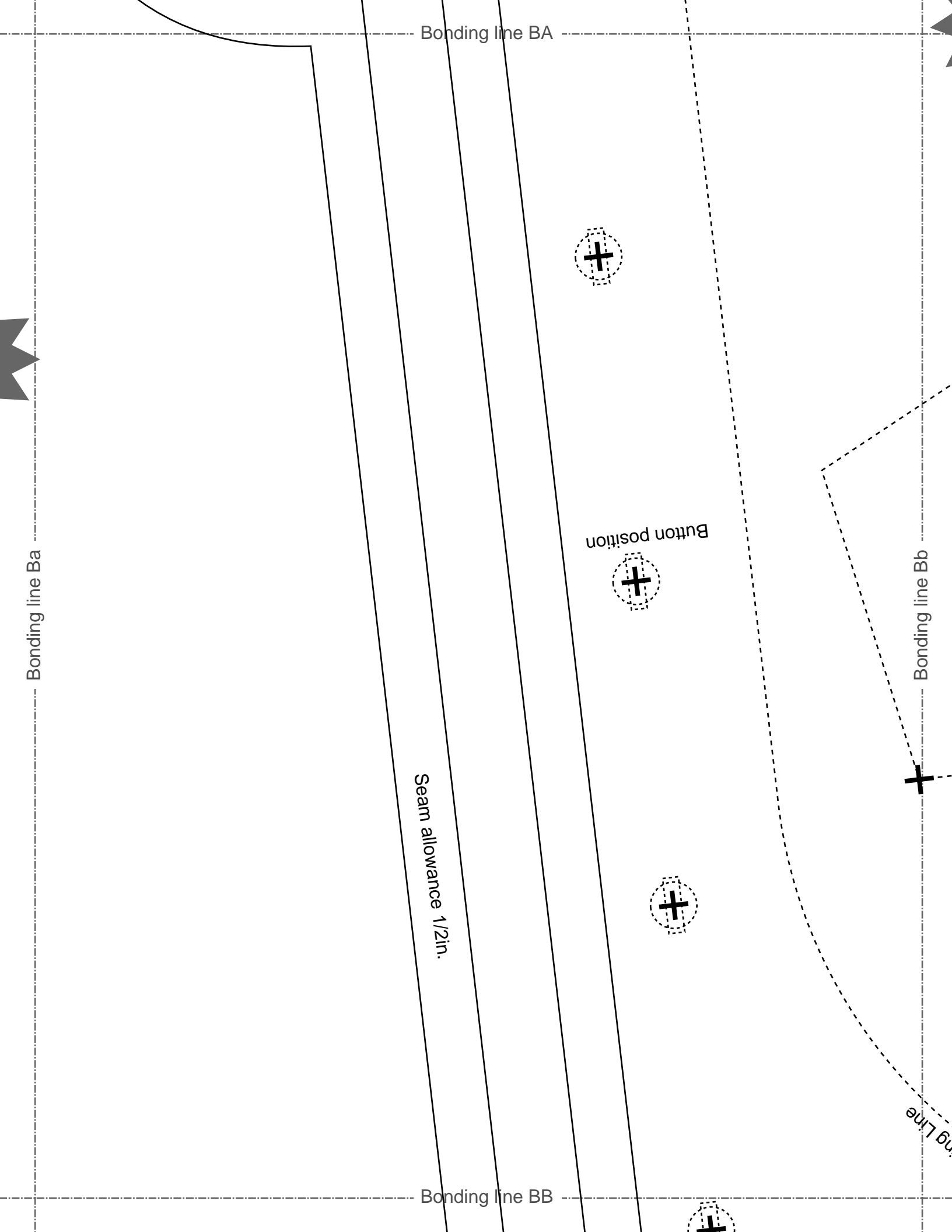
Bonding line AC

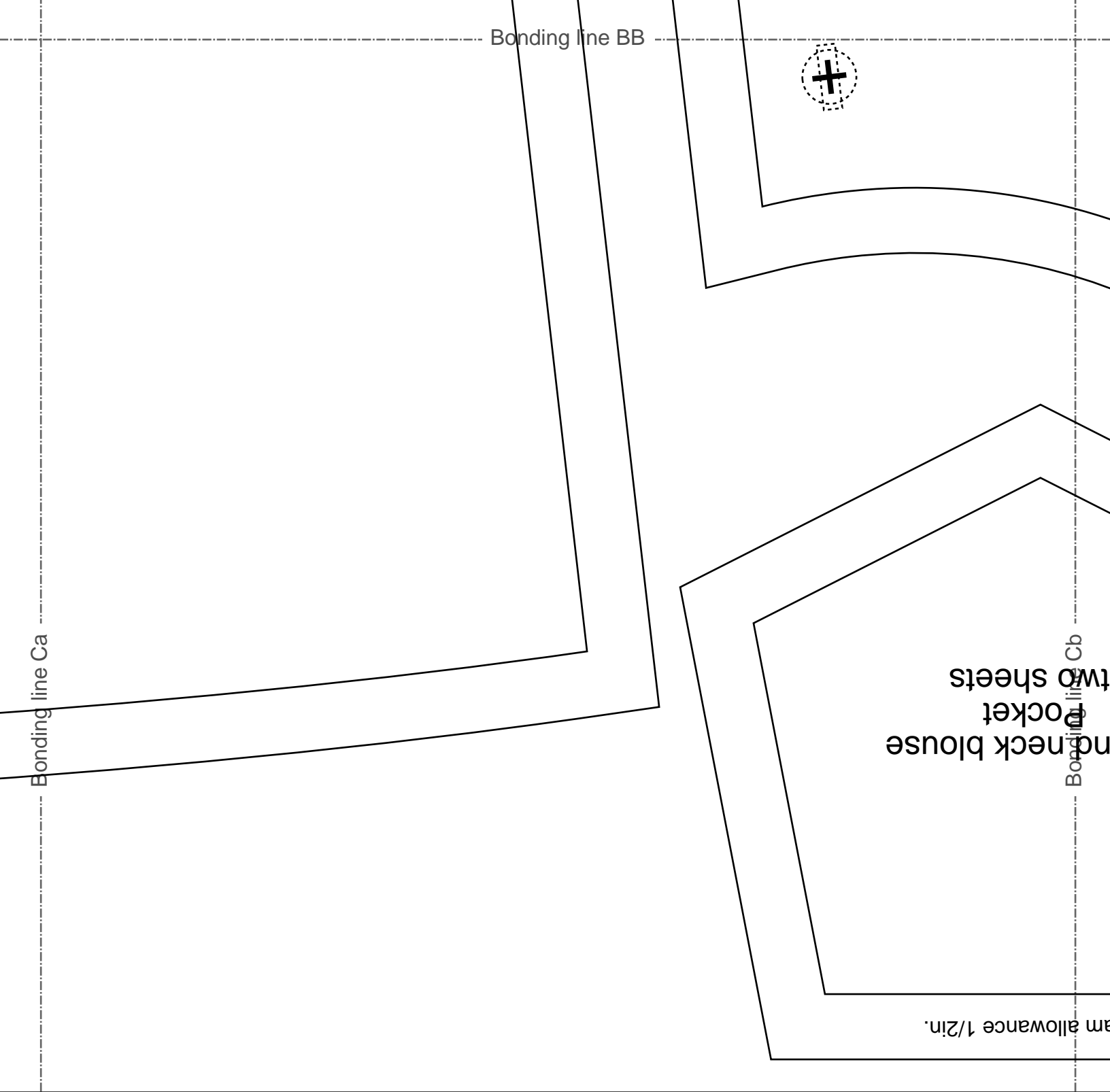
Bonding line Aa

Bonding line Ab



Bonding line BA





→

Round neck blouse
Facing two sheets
Fusible interlining two sheets

Seam allowance 1/2in.

Bonding line BC

Bonding line Ab



Bonding line Ac

Round neck blouse
Front Body
Two sheets



size

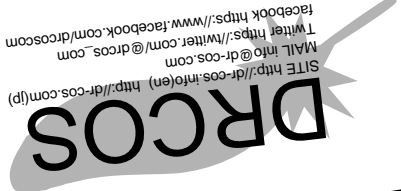
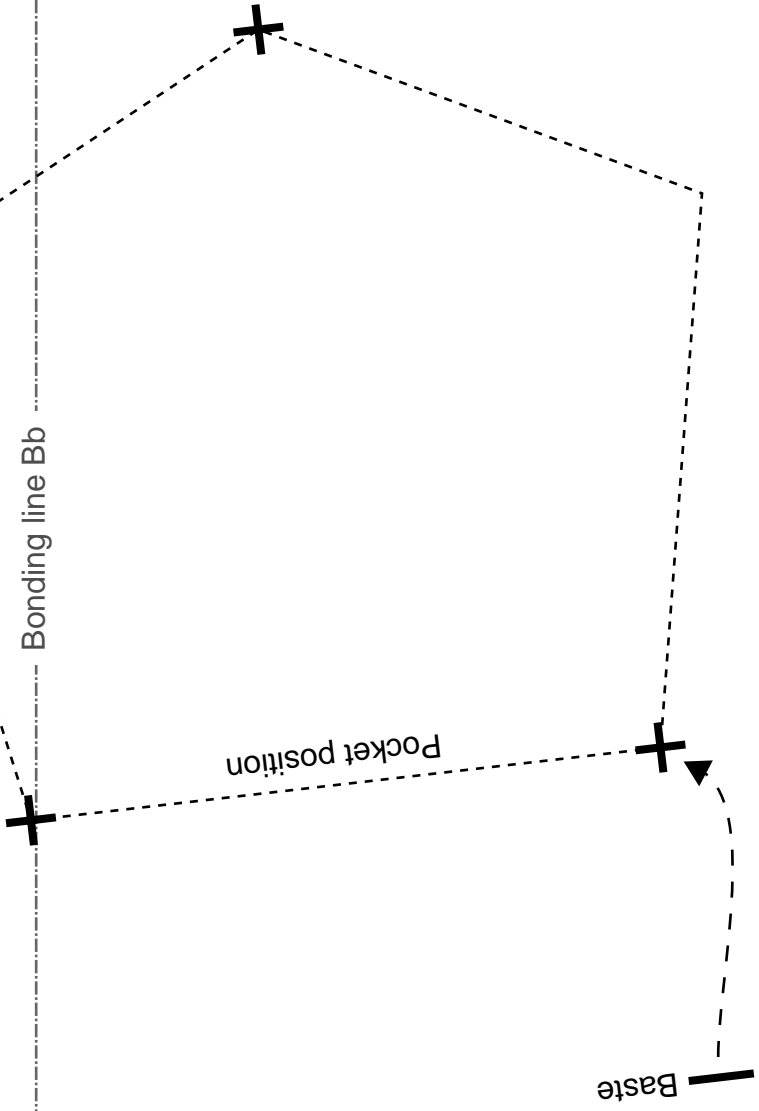
Bonding line CA

allowance 1/2in.

size

Bonding line CA

Seam allowance



Bonding line Bc

Bonding line CB

Facing Line

Bonding line CB

Bonding line Cb
Round neck
two sizes

Seam allow

Bonding line Cc

LADIES'  size

Bonding line CC

Bonding line DB

DRCOS

SITE [http://dr-cos.info\(en\)](http://dr-cos.info(en)) <http://dr-cos.com>
MAIL info@dr-cos.com
Twitter https://twitter.com/@drcos_com
facebook <https://www.facebook.com/drcoscom>

Bonding line Cc

Bonding line Cd

LADIES

Round neck bl
Sleeve
two sheets

Front



Seam allowance 1/2

Bonding line DC

Bonding line EB

OS

[http://dr-cos.com\(jp\)](http://dr-cos.com(jp))

@drcos_com

book.com/drcoscom

Grain Line

size

Bonding line Cd

size

Bonding line Ce

Back blouse
ve
eets

Back

ance 1/2in.

Bonding line EC

Bonding line FB

Seam allowance 1/2in.

Round neck blouse
Facing two sheets
Fusible interlining two sheets



Bonding line Ce

Bonding line Cf

Bonding line FC