

**DRCOS**

SITE <https://dr-cos.info/en> <https://dr-cos.com/jp>

MAIL [info@dr-cos.com](mailto:info@dr-cos.com)

Twitter [https://twitter.com/drcos\\_com](https://twitter.com/drcos_com)

pinterest <https://www.pinterest.jp/drcosinfo>



Retro Vest  
Back Body  
Lining Fabric  
two sheets

Bonding line Aa

Bonding line AA

Bonding line AA



Seam allowance 1cm



Please check here for the required fabric length images, cutting reference images, and the step-by-step sewing instructions. <https://dr-cos.info/fp-retrovest.html>

Bonding line AB

no sheets  
Pocket  
Retro Vest



DR

SITE <https://dr-cos.info>  
MAIL [info@dr-cos.info](mailto:info@dr-cos.info)  
Twitter <https://twitter.com/dr-cos>  
pinterest <https://pinterest.com/dr-cos>

Bonding line AB

Bonding line Ca

**DRCOS**

SITE <https://dr-cos.info/en> <https://dr-cos.com/jp>  
MAIL [info@dr-cos.com](mailto:info@dr-cos.com)  
Twitter [@drcos\\_com](https://twitter.com/@drcos_com)  
pinterest <https://www.pinterest.jp/drcosinfo>



Bonding line AC  
**Retro Vest**  
**Front Body(side)**

# Retro Vest Front Body(side) Lining Fabric two sheets

Seam allowance 1cm



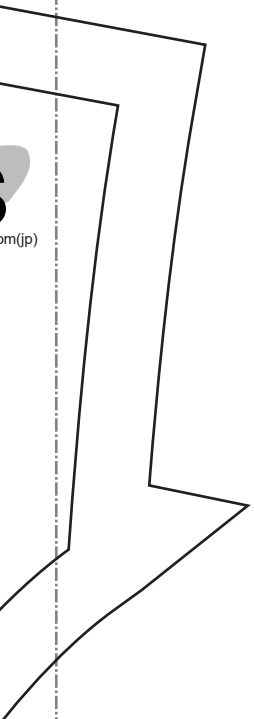
pocket position

How to sew pockets.  
Please refer to this page  
<https://www.dr-cos.info/kt-pocket.html>



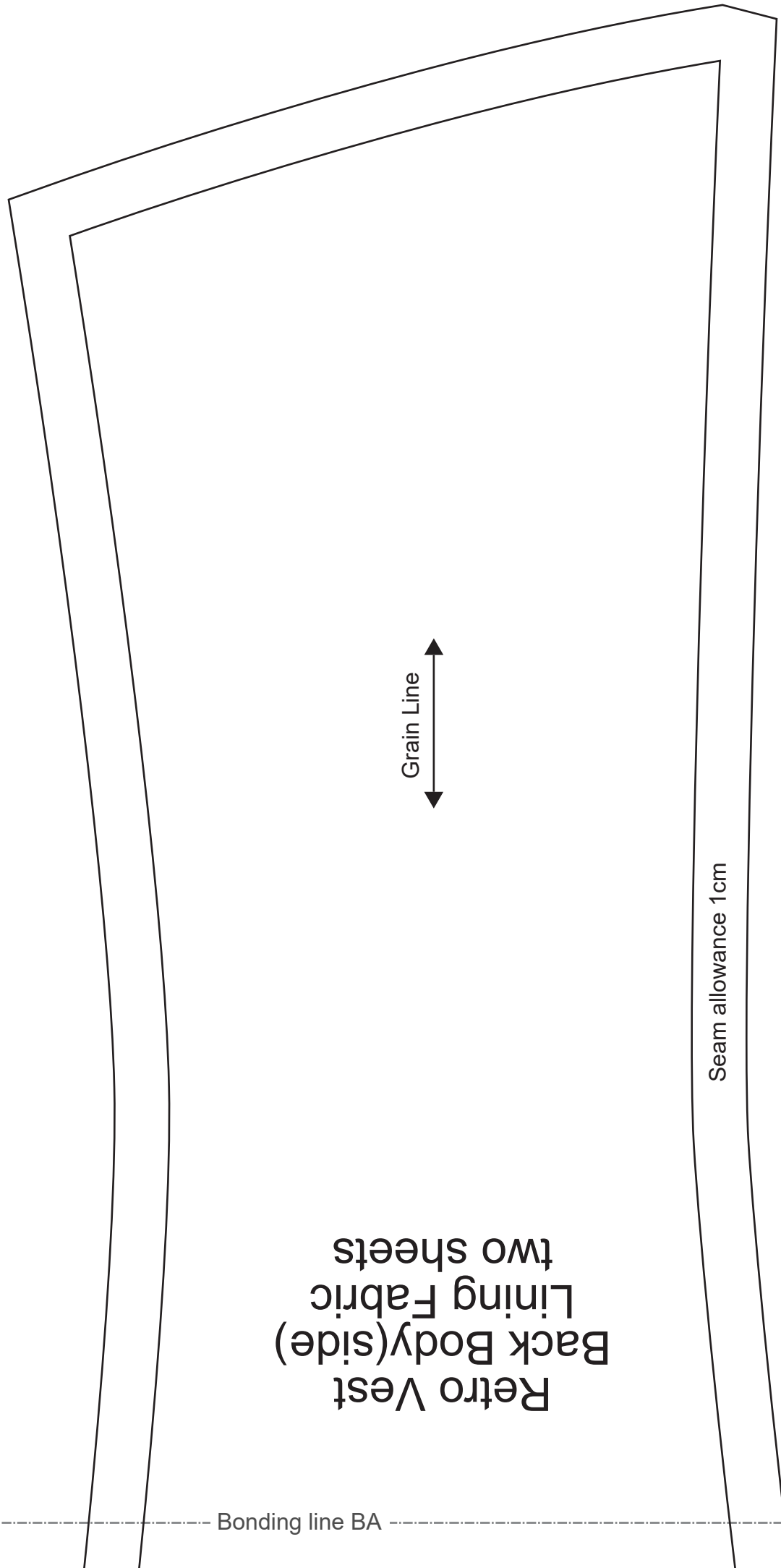
Bonding line Da

Bonding line AD



om.jp

Bonding line Aa



Retro Vest  
Back Body(side)  
Lining Fabric  
two sheets

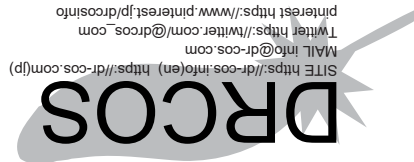
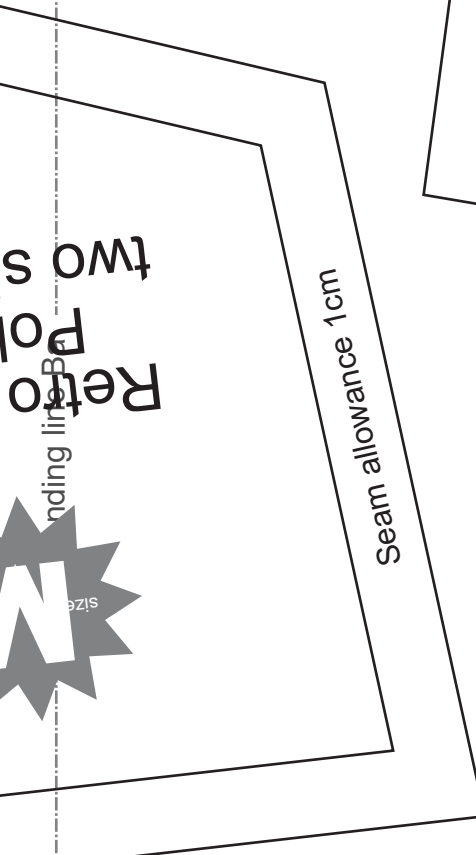


Seam allowance 1cm

Bonding line BA

Bonding line Ab

Bonding line BA



Bonding line Bb



Bonding line BB

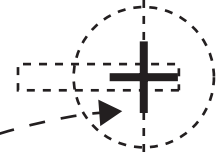
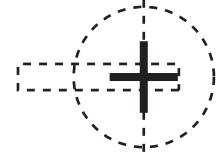
Bonding line BB



# Retro Vest Front Body Lining Fabric two sheets



Button position



Bonding line Ca

Seam allowance 1 cm

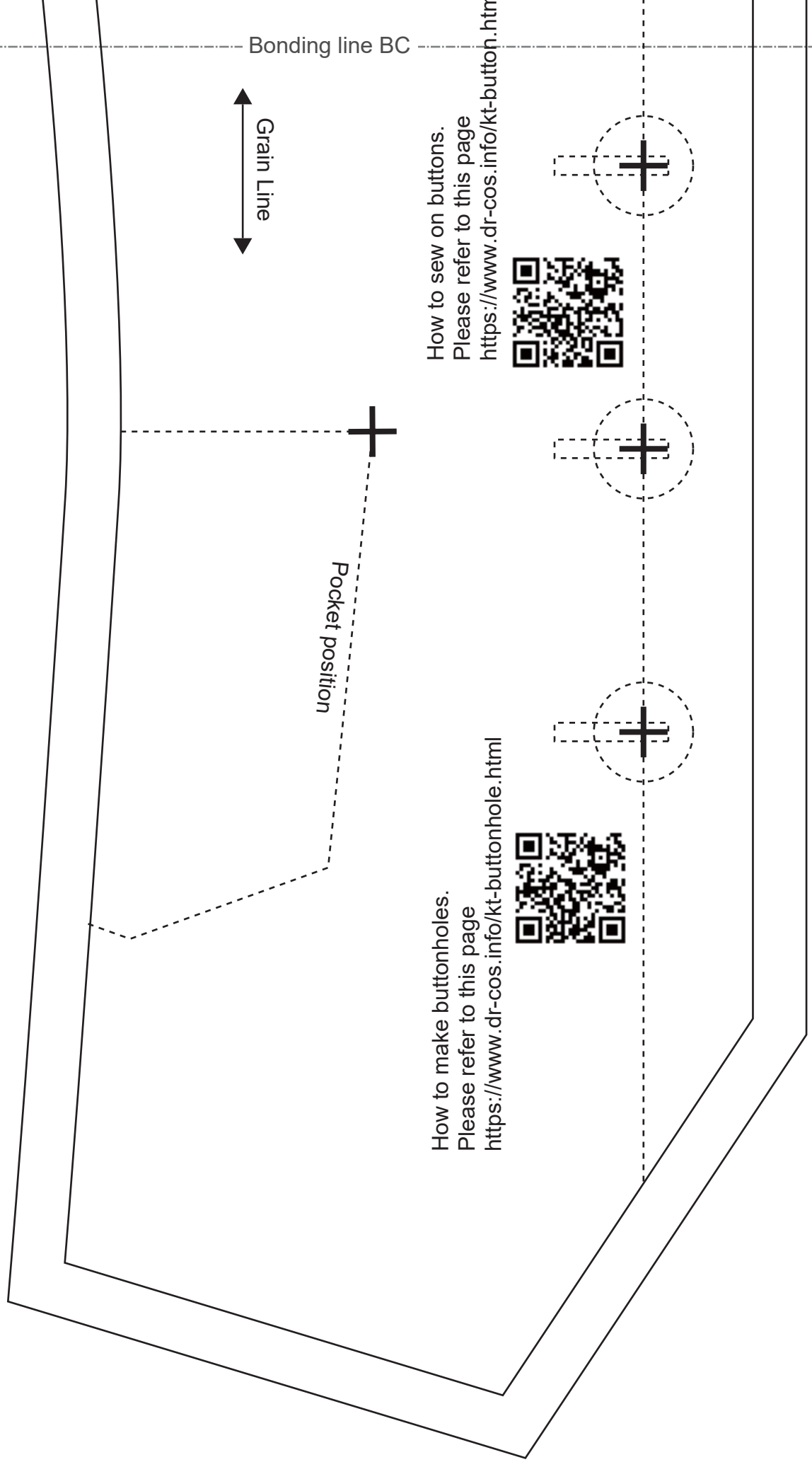
 Baste

Bonding line BC

Bonding line Cb

button.html

Bonding line Da



Bonding line BC



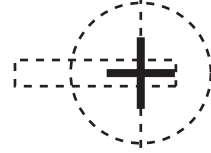
Pocket position



How to make buttonholes.  
Please refer to this page  
<https://www.dr-cos.info/kt-buttonhole.html>



How to sew on buttons.  
Please refer to this page  
<https://www.dr-cos.info/kt-button.htm>



Bonding line Db

Bonding line BD