

# MEN'S size

Bonding line Aa

**DRCOS**  
SITE <http://dr-cos.info/en> <http://dr-cos.com/jp>  
MAIL [info@dr-cos.com](mailto:info@dr-cos.com)  
TWITTER [@drcos\\_com](https://twitter.com/@drcos_com)  
FACEBOOK <https://www.facebook.com/drcoscom>

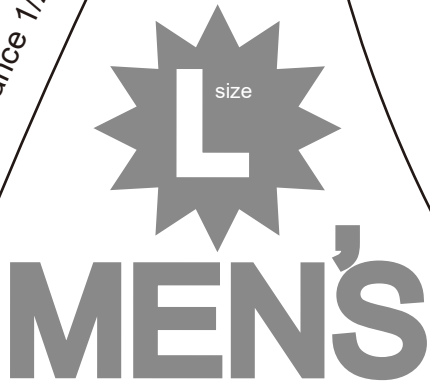
Bonding line AA

Seam allowance 1/2in.

U00500  
(d)/u0000  
S

Bonding line AA

Seam allowance 1/2in.



Princess Dress  
Front Facing two sheets  
Fusible interlining two sheets

Bonding line Ba

Bonding line AB



**Princess Dress 2**  
**Front body**  
**one sheets**

Bonding line Aa

Bonding line Ab

Bonding line BA

**ME**



Bonding line Ab

Bonding line Ac

Seam allowance 1/2in.

**WOMEN'S** **L** size

Princess Dress  
Back Facing two sheets  
Fusible interlining two sheets

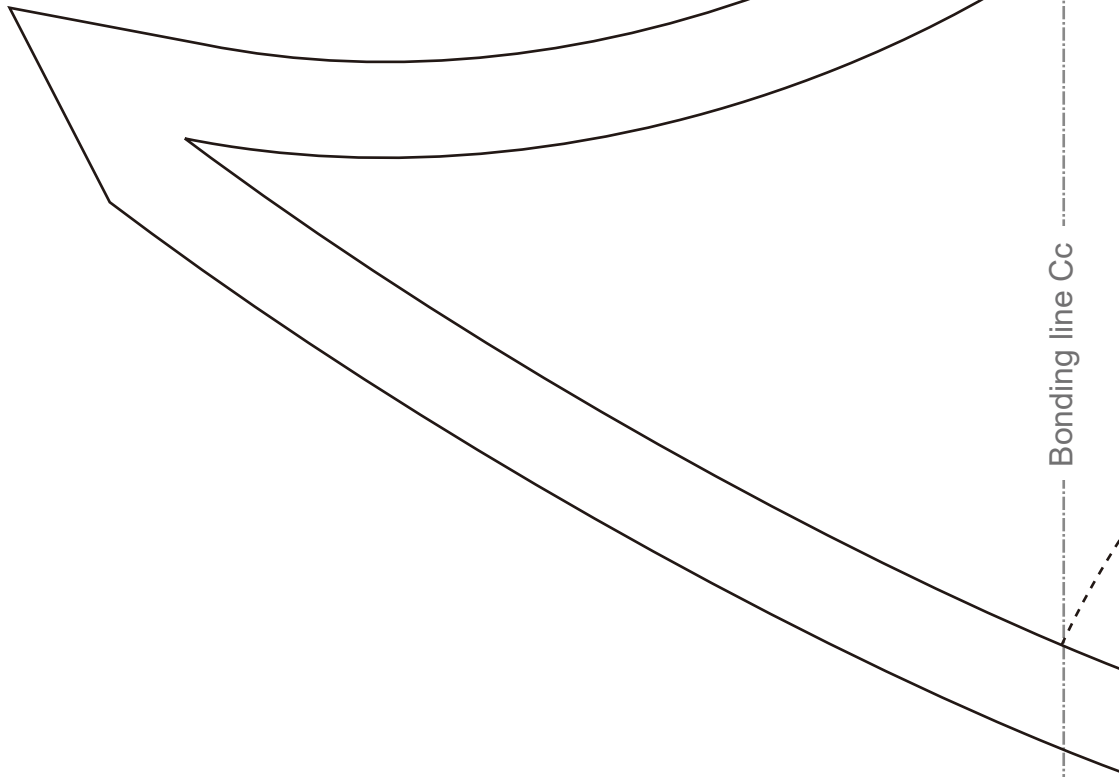
Bonding line CA

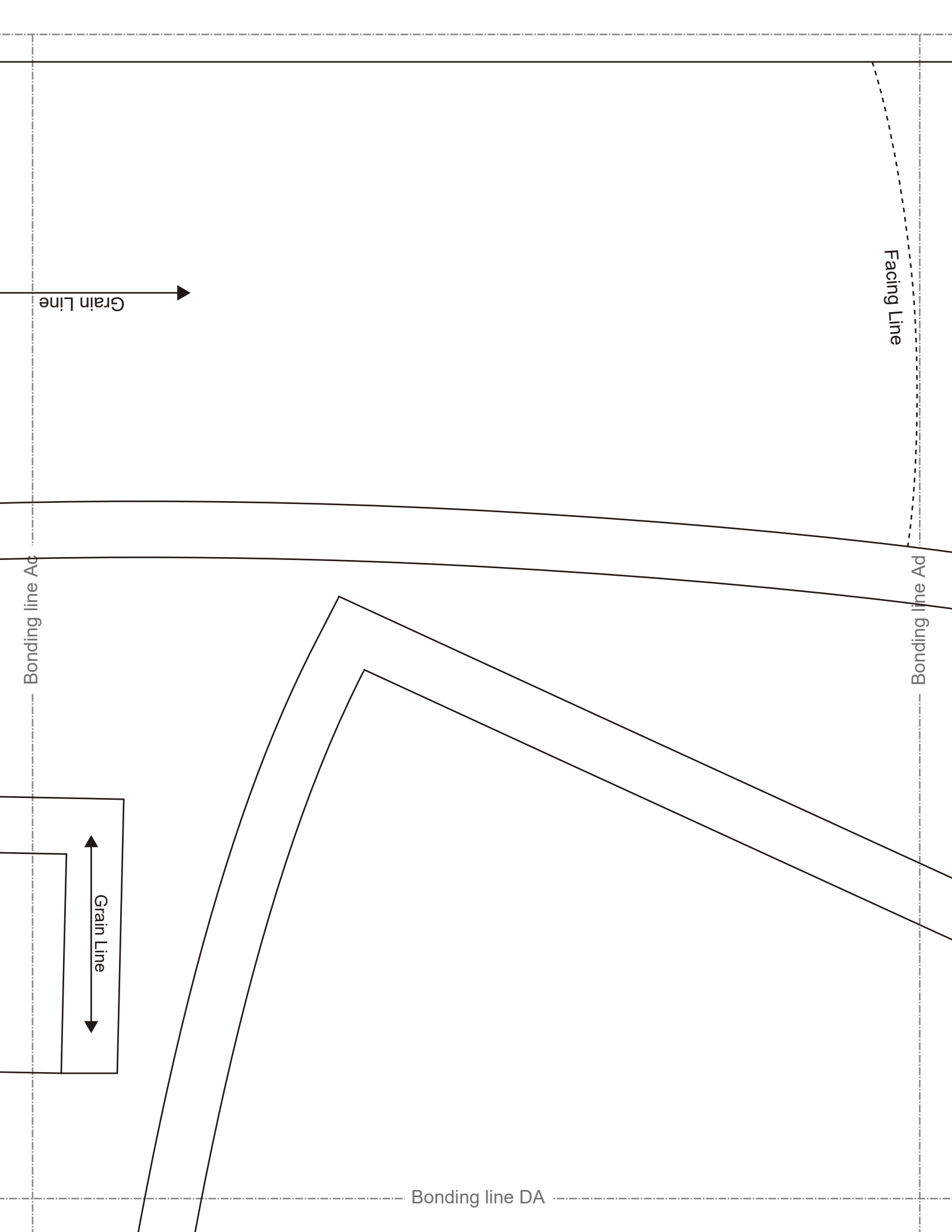
Bonding line CB

Bonding line Cb

Bonding line Cc

Bonding line CC





Bonding line DA

Seam allowance 1/2in.

Bonding line Bc

**DRCOS**  
 SITE <http://dr-cos.info/en/> | [http://dr-cos.com/\(p\)](http://dr-cos.com/(p))  
 MAIL [info@dr-cos.com](mailto:info@dr-cos.com)  
 Twitter <https://twitter.com/dr-cos>  
 facebook <https://www.facebook.com/drcoscom>

**MEN'S**  
**SIZE**  
 size

Bonding line Bd

Bonding line DB

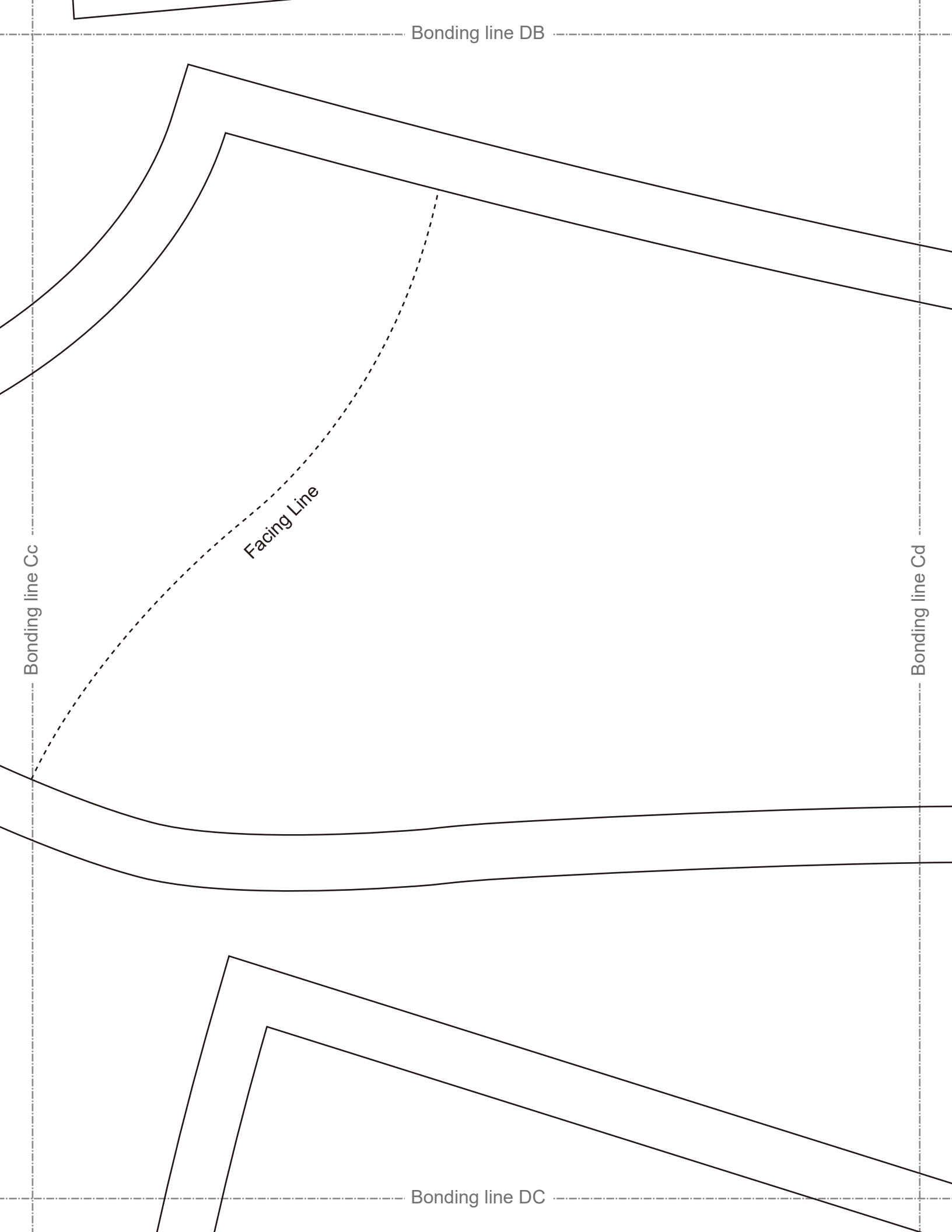
Bonding line DB

Bonding line Cc

Bonding line Cd

Facing Line

Bonding line DC







Bonding line Dd

**Princess Dress 2**  
**Back body**  
**two sheets**

Bonding line DC

Seam allowance 1/2in.

Bonding line Dc

Bonding line DD

The DRCOS logo features the word 'DRCOS' in a bold, sans-serif font, with a stylized starburst graphic behind the letters. Below the logo, contact information is listed:

SITE <http://dr-cos.info/en> <http://dr-cos.com/jp>  
MAIL [info@dr-cos.com](mailto:info@dr-cos.com)  
Twitter <https://twitter.com/dr-cos>  
facebook <https://www.facebook.com/dr-cos.com>

Facing Line

Spare cloth

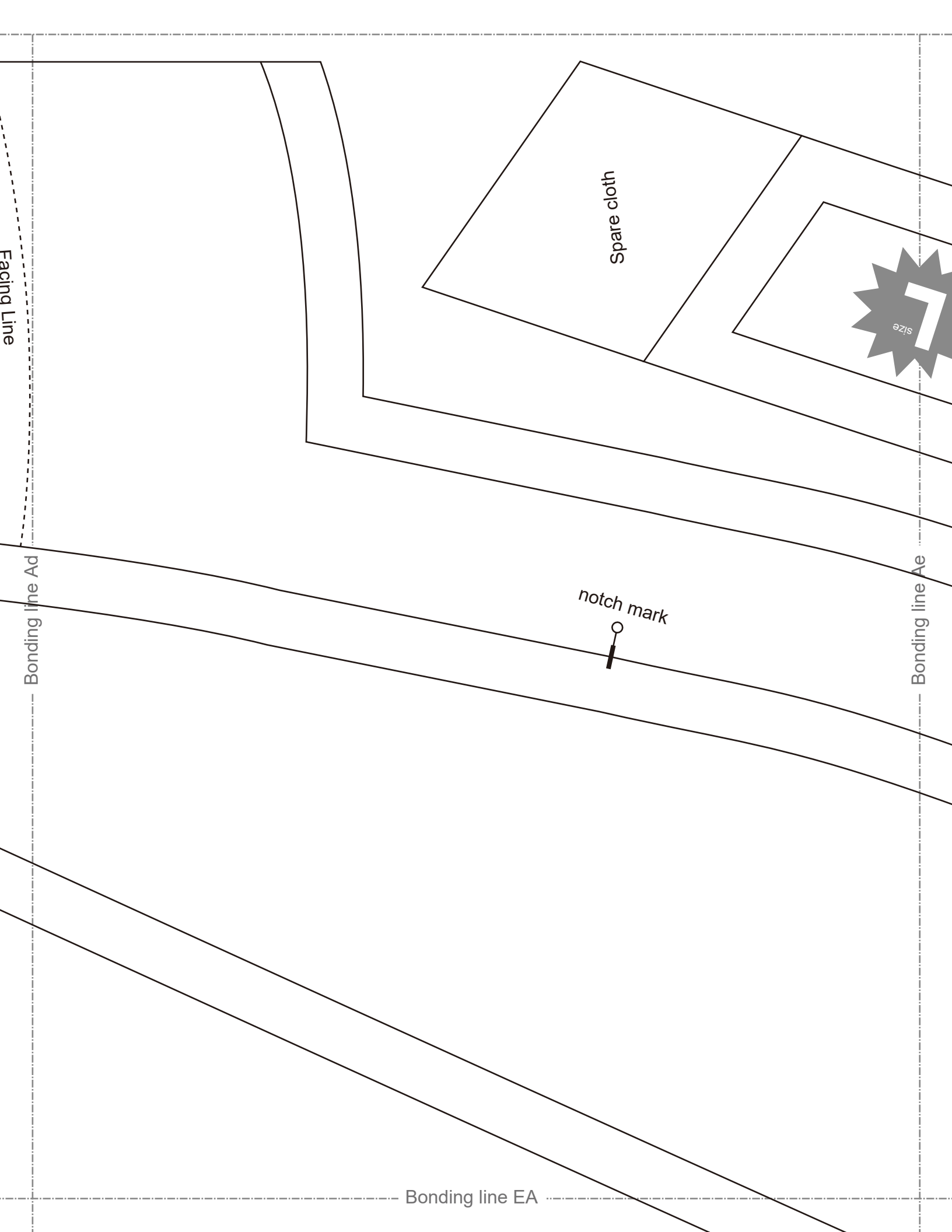
SIZE

notch mark

Bonding line Ad

Bonding line Ae

Bonding line EA



Bonding line EA

*Princess Dress 2*  
*Back body side*  
*two sheets*

Bonding line Be

Bonding line Bd

Bonding line EB

Bonding line EB

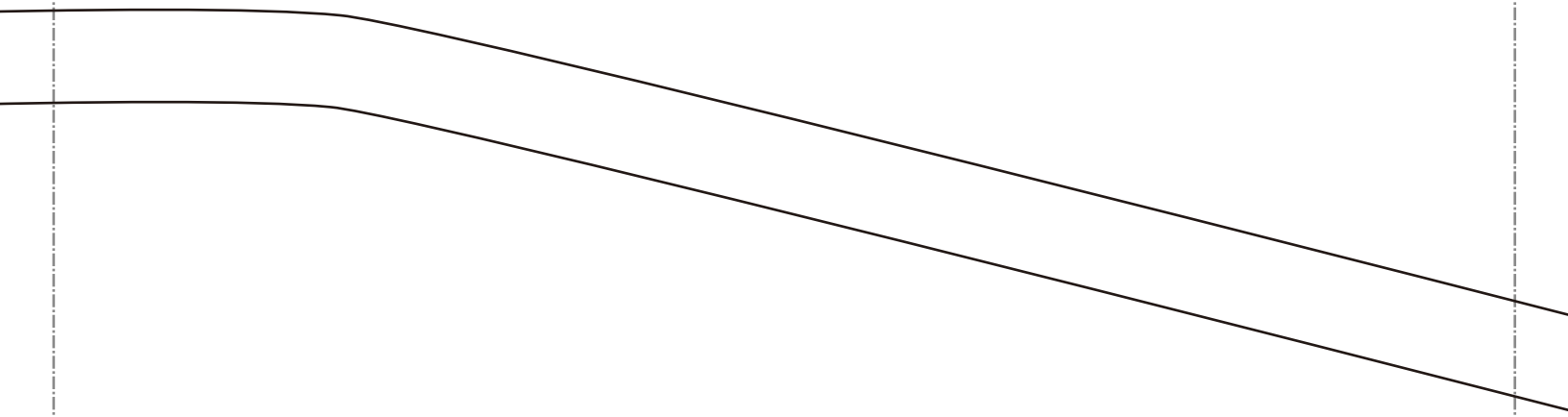


Bonding line Cd



Bonding line Ce

Bonding line EC



Bonding line EC

size  
**MEN'S**

Bonding line Dd

Baste

Fastener end O

Bonding line De

Bonding line ED

**MEN'S**  
size 7

Seam allowance 1/2in.

Princess Dress 2  
Front Facing one sheets  
Fusible interlining one sheets



Bonding line Ae

Bonding line Ae

Bonding line FA

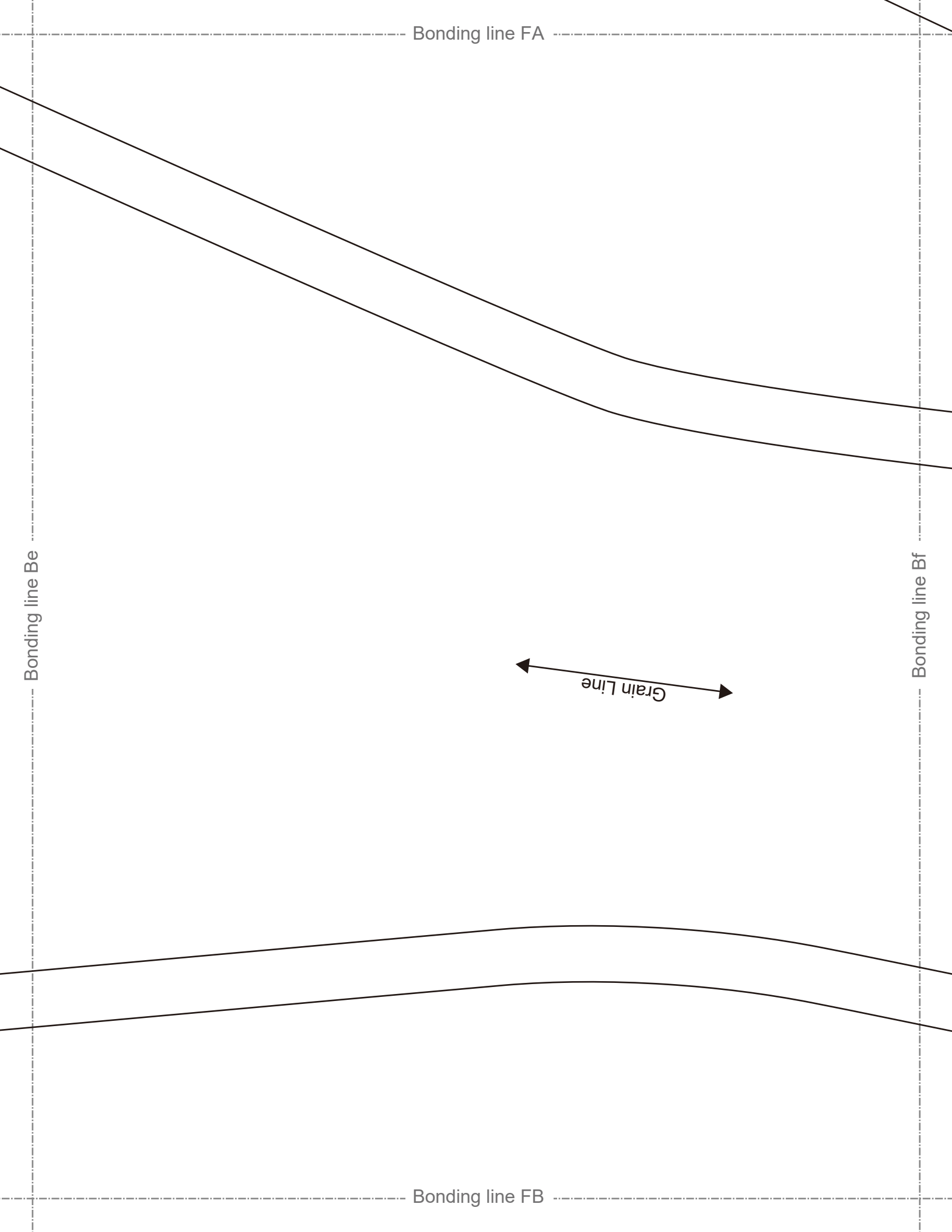
Bonding line FA

Bonding line Be

Bonding line Bf

Grain Line

Bonding line FB



Bonding line FB

Bonding line Ce

Princess Dress 2  
Front body side  
two sheets

Bonding line FC

size  
MEN'S



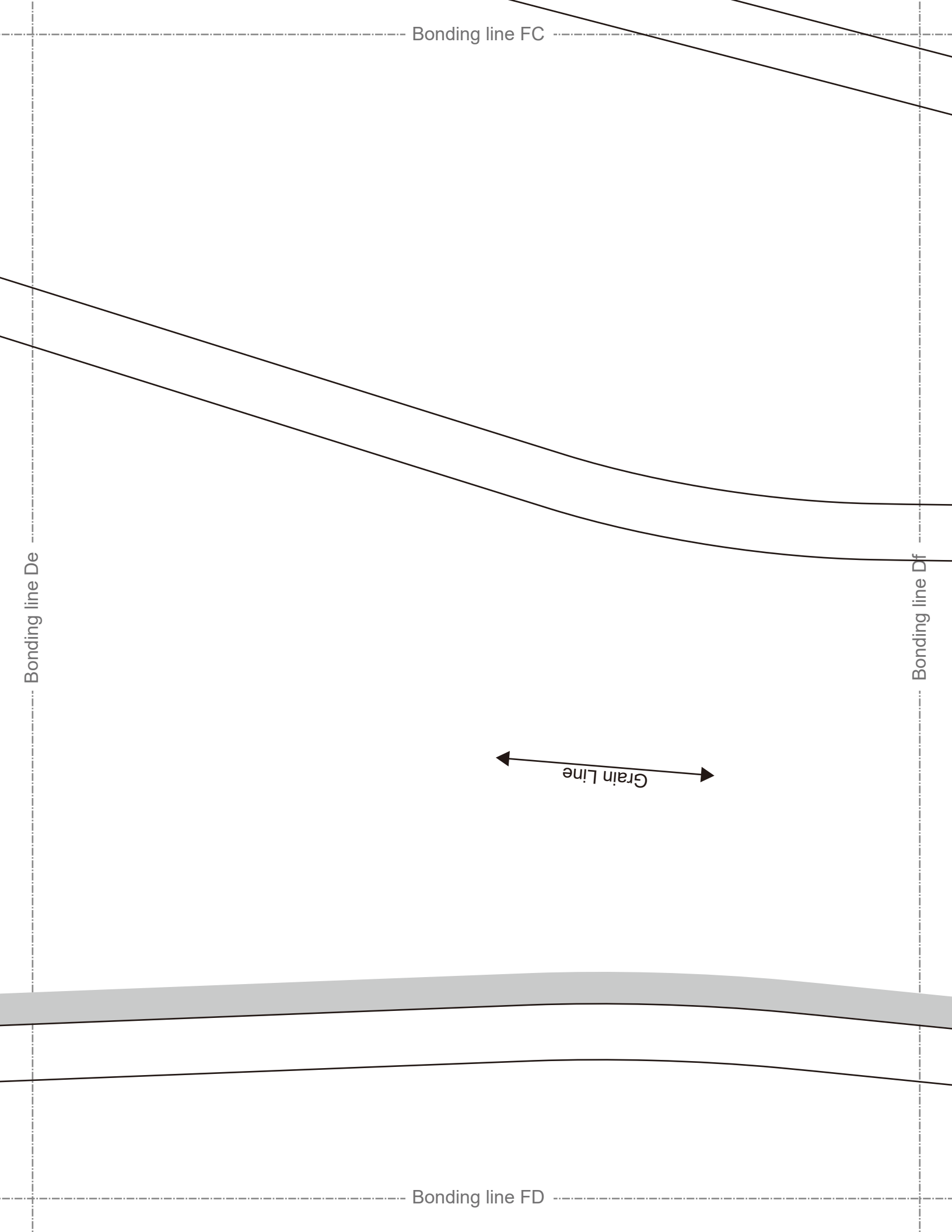
Bonding line FC

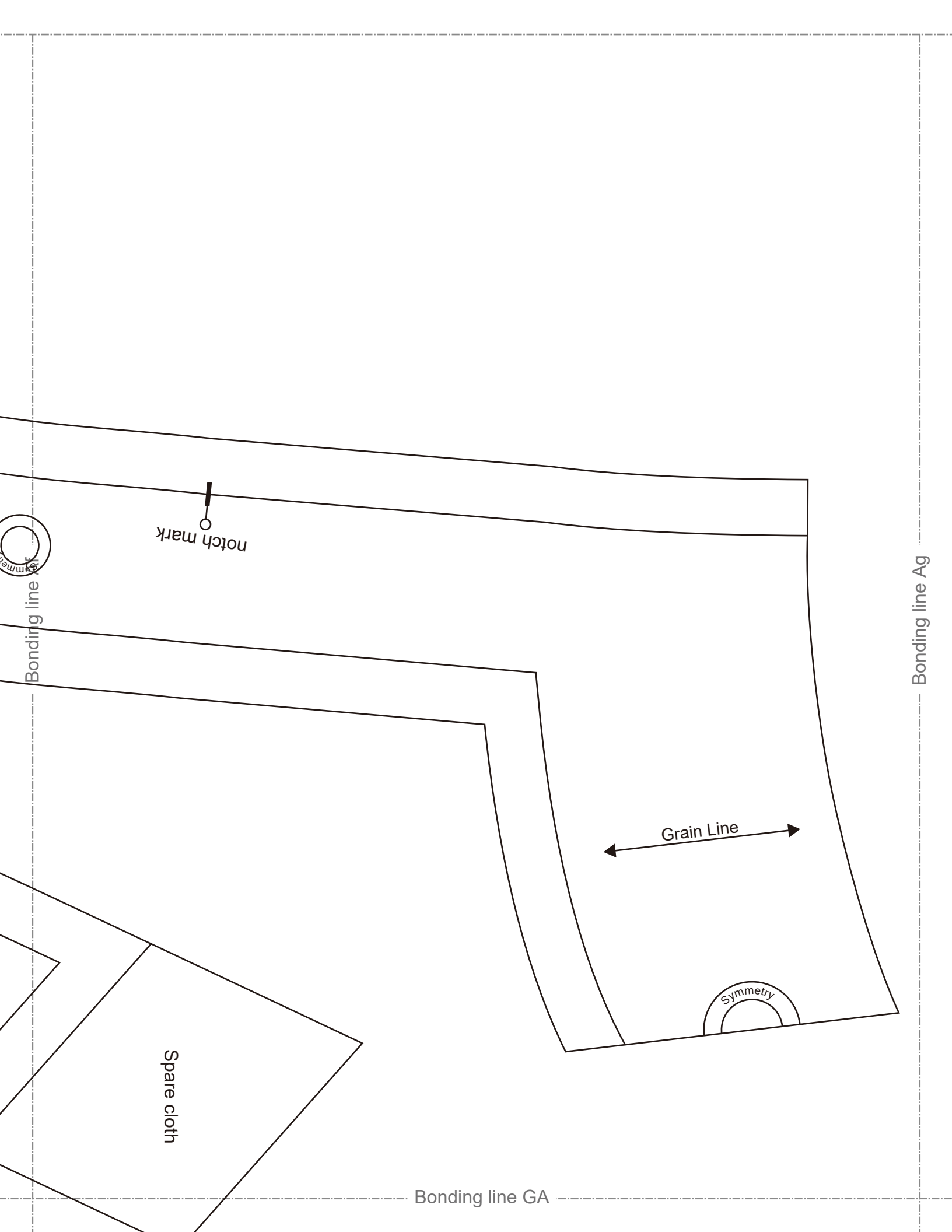
Bonding line De

Bonding line Df

Grain Line

Bonding line FD





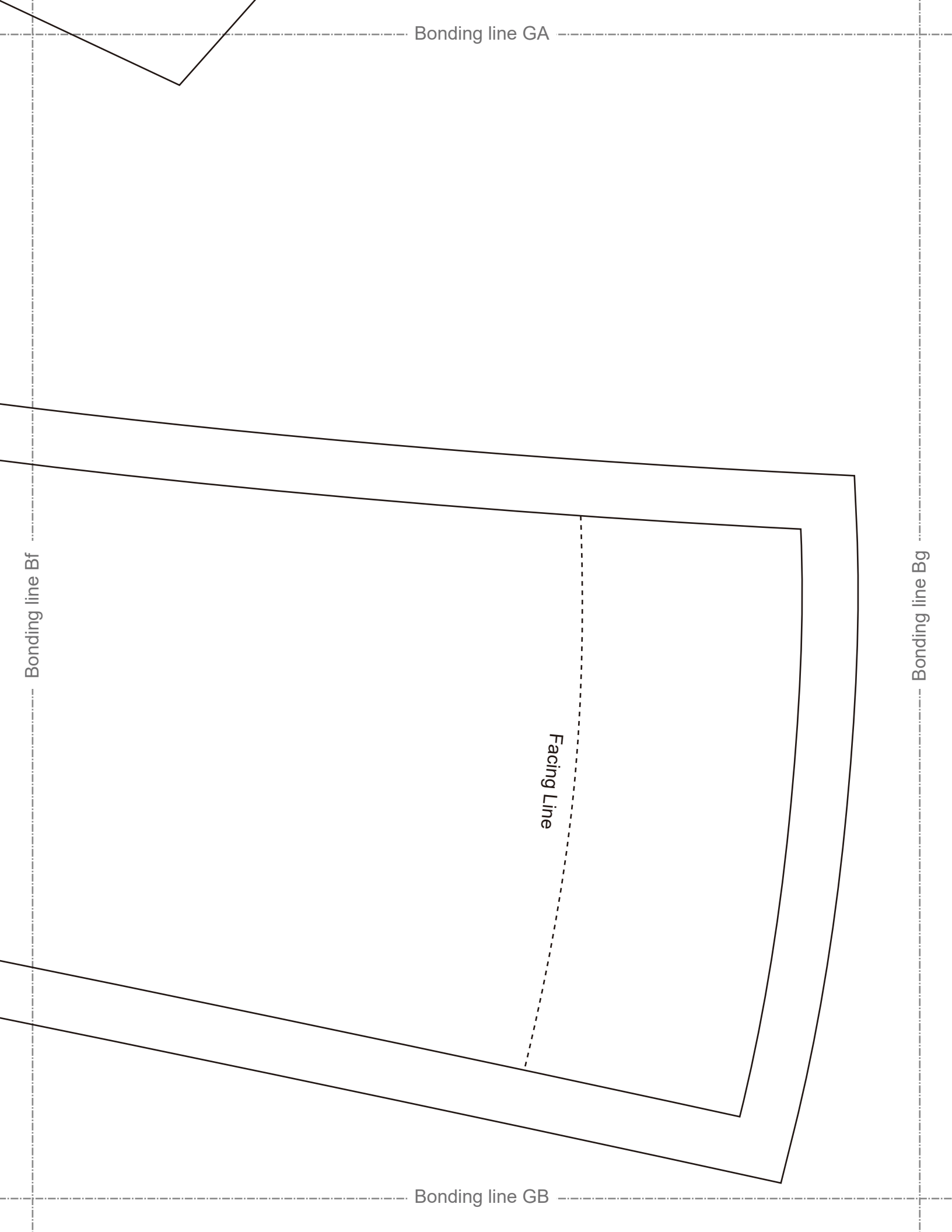
Bonding line GA

Bonding line Bf

Bonding line Bg

Facing Line

Bonding line GB



# MEN'S size

Bonding line GB



Seam allowance 1/2in.

Bonding line GC

Bonding line Cg

Bonding line GC

Bonding line Df

Bonding line Dg

Bonding line GD



Shoulder strap position

Facing Line

Fusible Stay tape