

[Home](#)  
[Back to Princesscoat page](#)

**DRCOS**

SITE [http://dr-cos.info\(en\)](http://dr-cos.info(en)) [http://dr-cos.com\(jp\)](http://dr-cos.com(jp))  
MAIL [info@dr-cos.com](mailto:info@dr-cos.com)  
Twitter [@drcos\\_com](https://twitter.com/@drcos_com)  
facebook <https://www.facebook.com/drcoscom>

Facing Line

Bonding line Aa

Bonding line AA

Bonding line AA

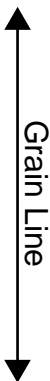
Bonding line Ba

Princesscoat  
Back body  
two sheets

Bonding line AB

Bonding line AB

Bonding line Ca



Bonding line AC

Bonding line AC

LADIES'  size M

Bonding line Da

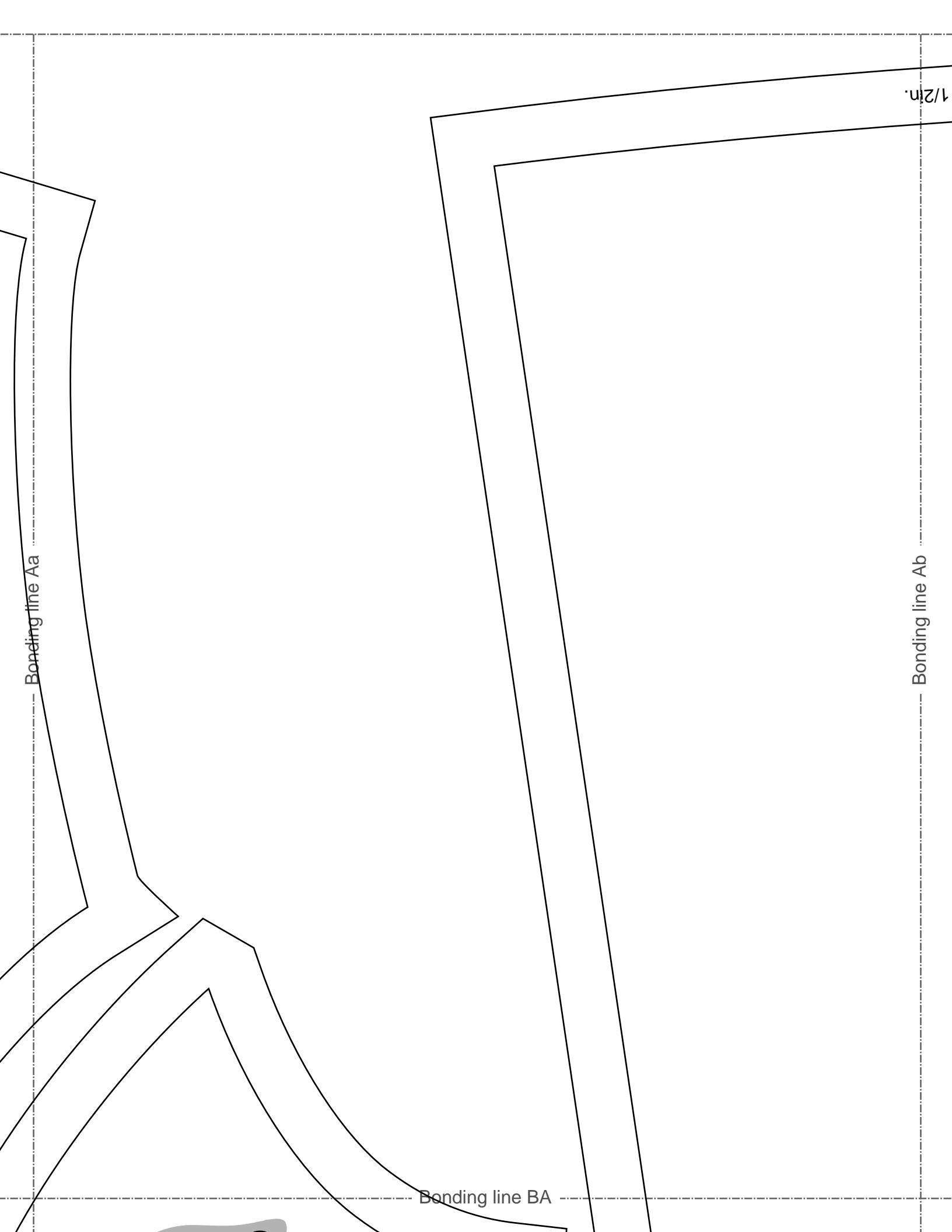
Bonding line AD

Bonding line AD

Bonding line Ea

Seam allowance 1/2in.

Bonding line AE



Bonding line BA

**DRCOS**

SITE [http://dr-cos.info\(en\)](http://dr-cos.info(en)) [http://dr-cos.com\(jp\)](http://dr-cos.com(jp))  
MAIL [info@dr-cos.com](mailto:info@dr-cos.com)  
Twitter [https://twitter.com/@drcos\\_com](https://twitter.com/@drcos_com)  
facebook <https://www.facebook.com/drcoscom>



Bonding line Ba

Bonding line Bb

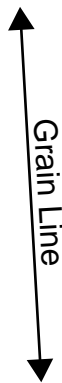
**Princesscoat  
Back body side  
two sheets**

Bonding line BB

Bonding line BB

Bonding line Ca

Bonding line Cb



Bonding line BC



Bonding line BC

Bonding line Da

Bonding line Db

LADIES' size M

Bonding line BD

Bonding line BD

Bonding line Ea

Bonding line Eb

Seam allowance 1/2in.

Bonding line BE

Seam allowance 1/2 in.

Bonding line Ab

Bonding line CA

Bonding line Ac

**D**

SITE [http](#)  
MAIL [info](#)  
Twitter [ht](#)  
facebook

Bonding line CA

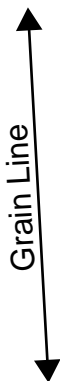
**LADIES**  
**M** sizes

Bonding line Bb

Bonding line Bc

Bonding line CB

Bonding line CB



Grain Line

Bonding line Cb

Bonding line Cc

Bonding line CC

Bonding line CC

Princesscoat  
Front body side  
two sheets

Bonding line Db

Bonding line Dc

SITE <http://dr-cos.info/en> <http://dr-cos.com/jp>  
MAIL [info@dr-cos.com](mailto:info@dr-cos.com)  
TWITTER [https://twitter.com/dr-cos\\_com](https://twitter.com/dr-cos_com)  
FACEBOOK <https://www.facebook.com/drcoscom>

**DRCOS**

Bonding line CD

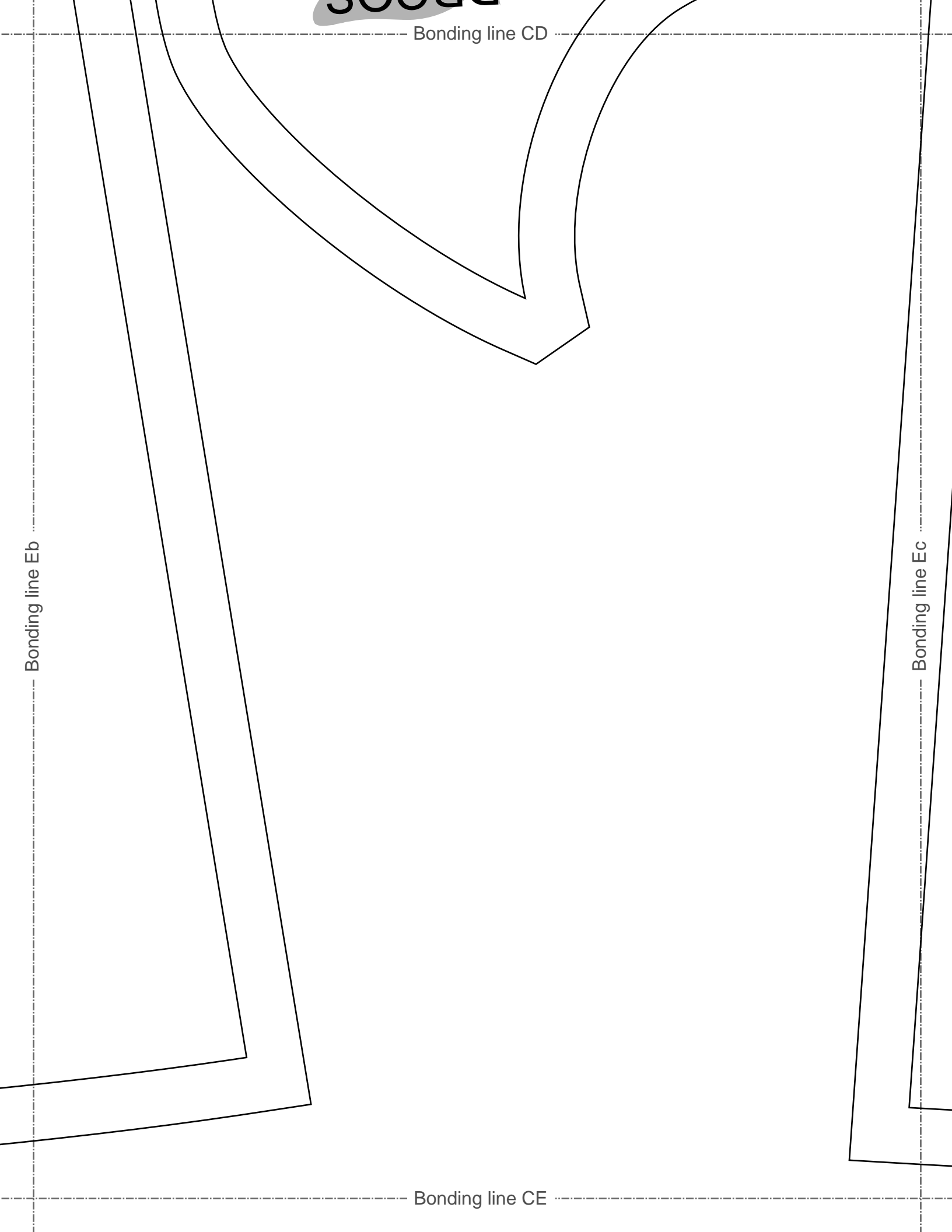
3000

Bonding line CD

Bonding line Eb

Bonding line Ec

Bonding line CE



Facing Line

Collar position

Baste

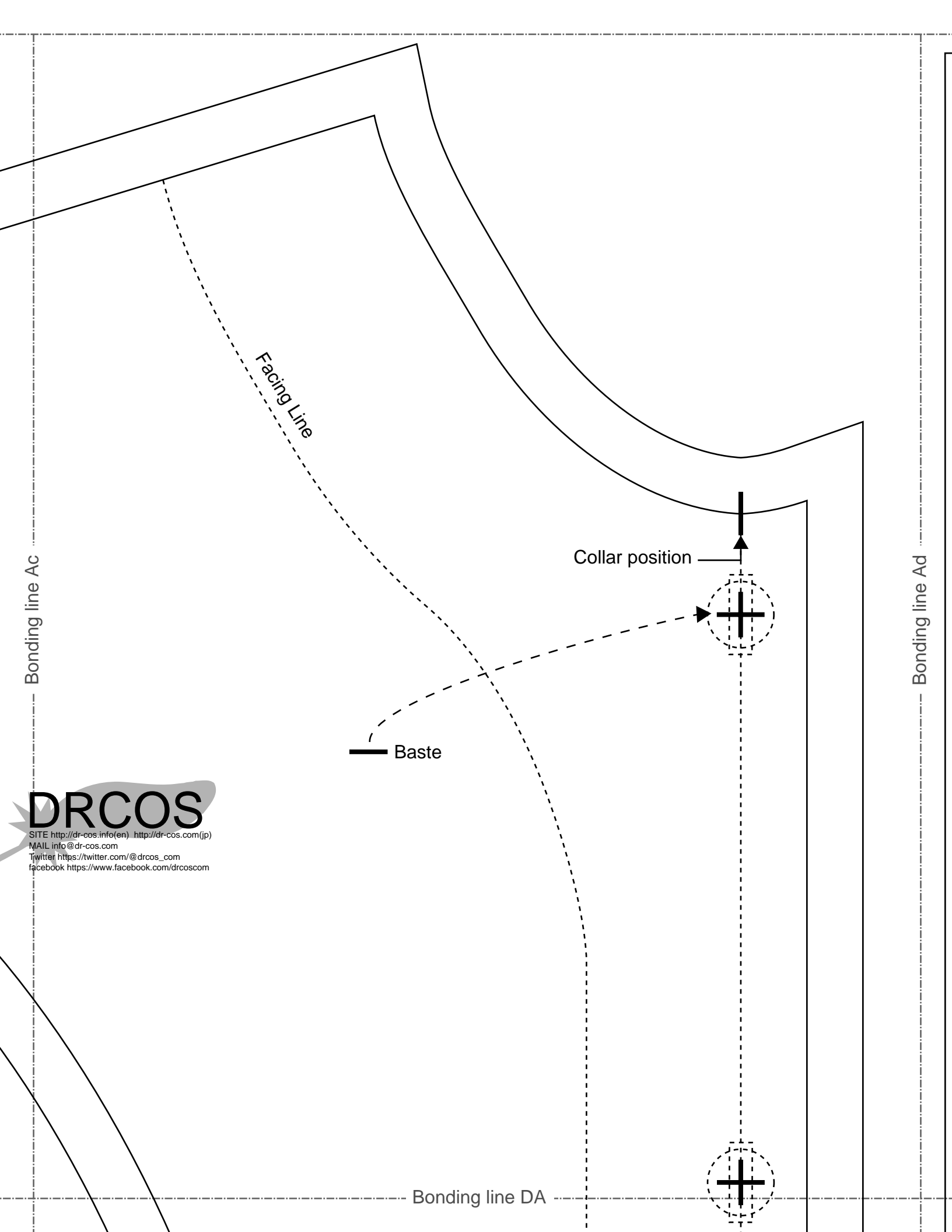
**DRCOS**

SITE [http://dr-cos.info\(en\)](http://dr-cos.info(en)) [http://dr-cos.com\(jp\)](http://dr-cos.com(jp))  
MAIL [info@dr-cos.com](mailto:info@dr-cos.com)  
Twitter [https://twitter.com/@drcos\\_com](https://twitter.com/@drcos_com)  
facebook <https://www.facebook.com/drcoscom>

Bonding line DA

Bonding line Ac

Bonding line Ad



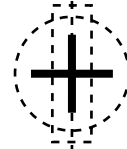


Bonding line Bc

Bonding line DA



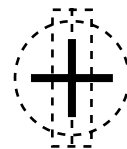
Center position

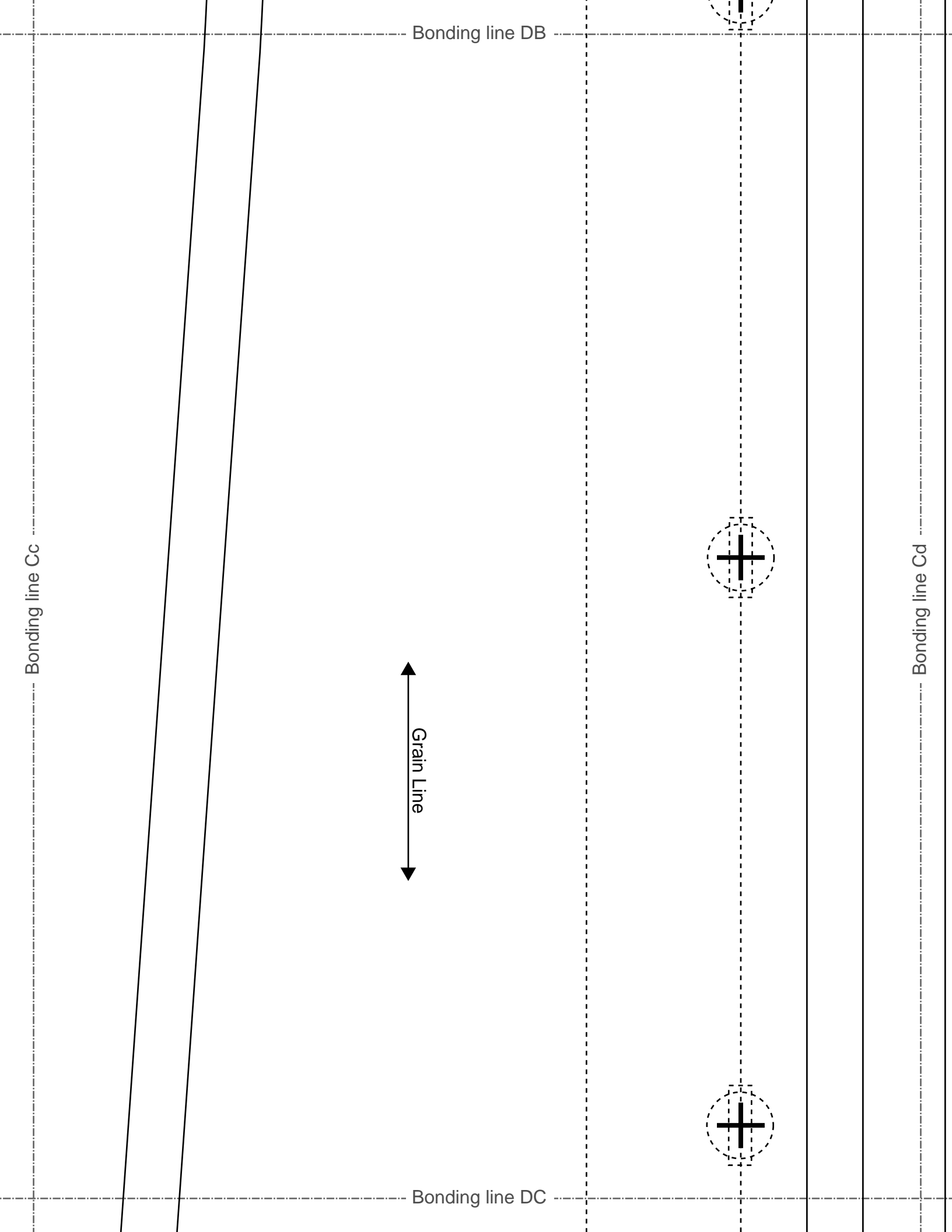


Bonding line Bd

Princesscoat  
Front body  
two sheets

Bonding line DB

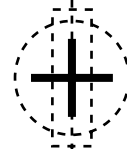




Bonding line DC

Bonding line Dc

Bonding line Dd



**LADIES'** size **M**

Bonding line DD

Bonding line DD



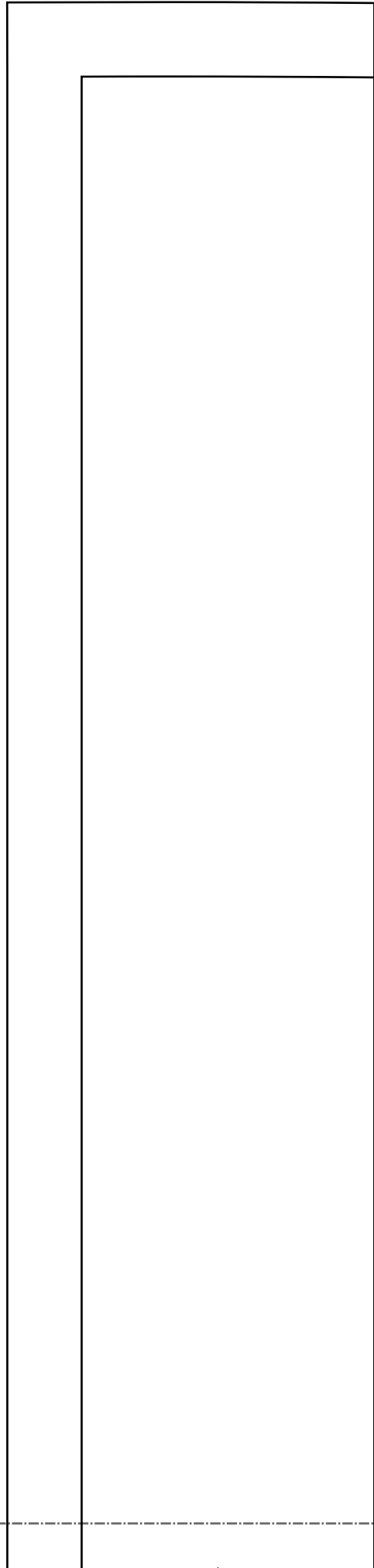
Bonding line Ec

Bonding line Ed

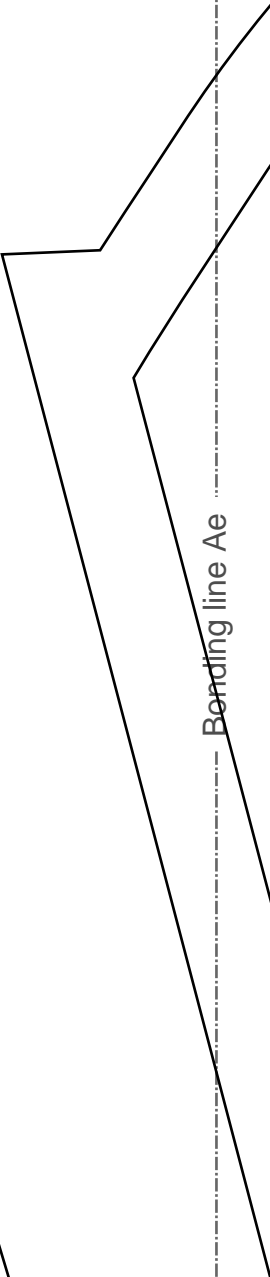
Seam allowance 1/2in.

Bonding line DE

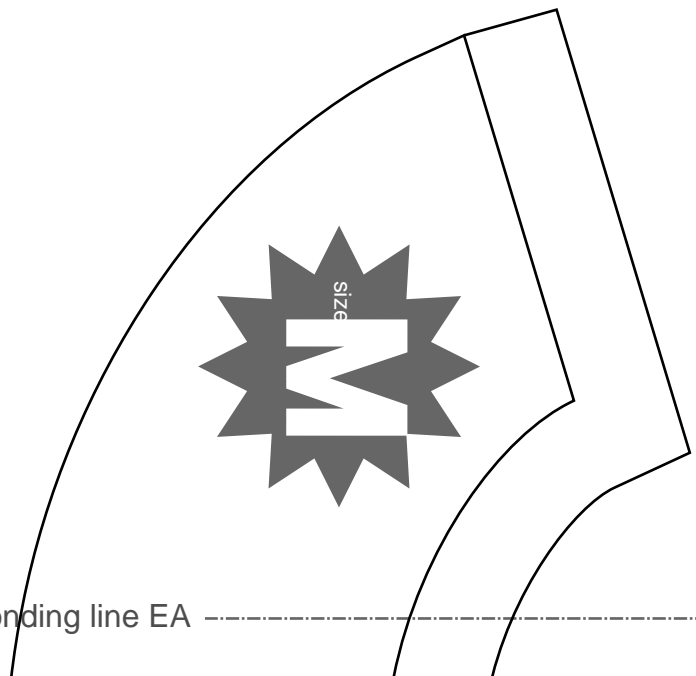
Bonding line Ad



Bonding line Ae



Bonding line EA



Bonding line EA

Princesscoat  
Back body facing  
one sheets  
Fusible interlining  
one sheets

Seam allowance 1/2in.

Grain Line

**DRCOS**  
SITE <http://dr-cos.info/en> <http://dr-cos.com/fp>  
MAIL [info@dr-cos.com](mailto:info@dr-cos.com)  
Twitter [https://twitter.com/dr-cos\\_com](https://twitter.com/dr-cos_com)  
facebook <https://www.facebook.com/drcoscom>

Bonding line EB

Grain Line

Bonding line Bd

Bonding line Be

Bonding line Cd

LADIES'S  
size  
M

Bonding line EB

Bonding line EC

Bonding line Ce

Bonding line EC

**Princesscoat**  
**Front body facing**  
**two sheets**  
**Fusible interlining**  
**two sheets**

Seam allowance 1/2in.

Bonding line Dd

Bonding line De

Bonding line ED



Bonding line ED

Bonding line Ed

**DRCOS**  
SITE [http://dr-cos.info\(en\)](http://dr-cos.info/en) [http://dr-cos.com\(jp\)](http://dr-cos.com(jp))  
MAIL [info@dr-cos.com](mailto:info@dr-cos.com)  
TWITTER [https://twitter.com/dr-cos\\_com](https://twitter.com/dr-cos_com)  
FACEBOOK <https://www.facebook.com/drcoscom>

Bonding line Ee

Bonding line EE

# DRCOS

SITE [http://dr-cos.info\(en\)](http://dr-cos.info(en)) [http://dr-cos.com\(jp\)](http://dr-cos.com(jp))  
MAIL [info@dr-cos.com](mailto:info@dr-cos.com)  
Twitter [@drcos\\_com](https://twitter.com/@drcos_com)  
facebook <https://www.facebook.com/drcoscom>

Bonding line Ae

Bonding line Af

Bonding line FA

# LADIE

Bonding line FA

Prince  
Sl  
two

Bonding line Be

Bonding line Bf

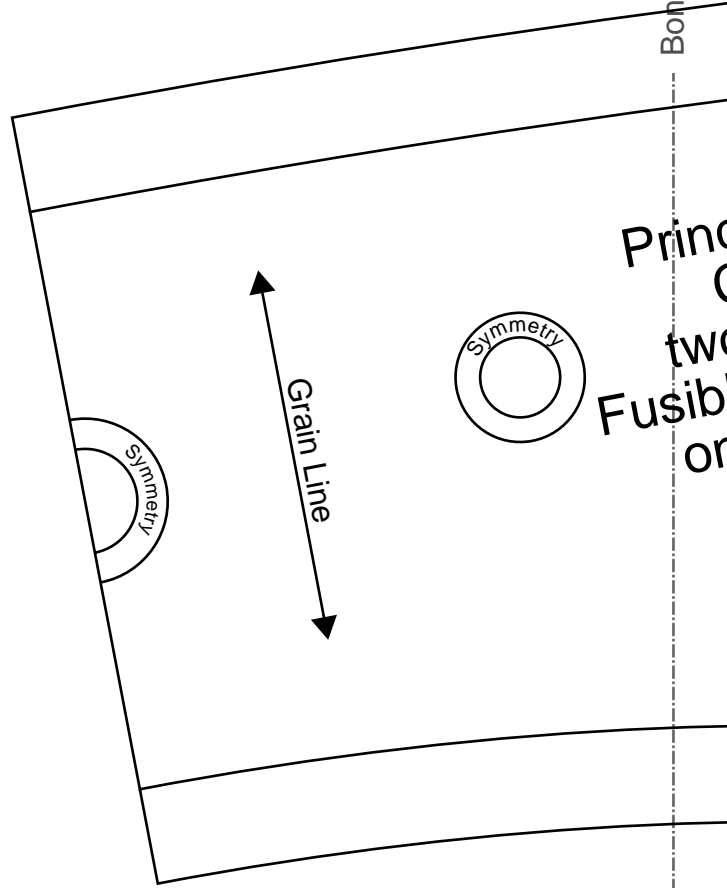
Bonding line FB

Bonding line FB

Bonding line Ce

Bonding line Cf

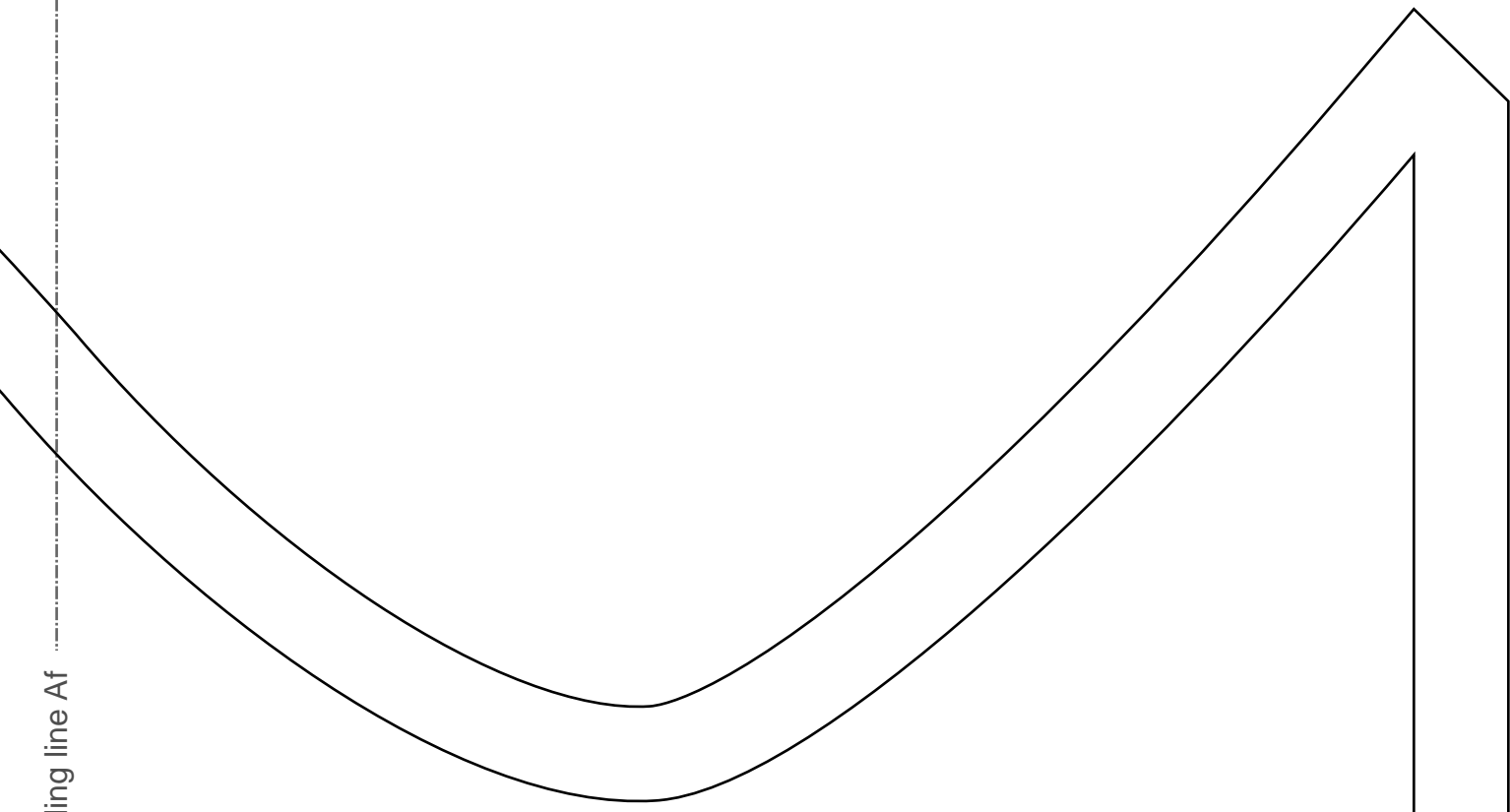
Bonding line FC



Grain Line

Symmetry

Symmetry



Bonding line Af

IES' size M

Bonding line GA

princesscoat  
Sleeve  
two sheets

Bonding line GA

Bonding line Bf



Bonding line GB

Bonding line GB

Seam allowance 1/2in.

Bonding line Cf

Princesscoat  
Collar  
two sheets  
fusible interlining  
one sheets

**DRCOS**

SITE <http://dr-cos.info/en> <http://dr-cos.com/jp>  
MAIL [info@dr-cos.com](mailto:info@dr-cos.com)  
Twitter [@drcos\\_com](https://twitter.com/@drcos_com)  
facebook <https://www.facebook.com/drcoscom>

**LADIES'** size **M**

Seam allowance 1/2in.

Bonding line GC