

Trifold

Bonding line Aa

Bonding line AA

**LADIES'**  **S**  
size

**Petticoat Pants**  
**Back Body**

Bonding line AA

# Petticoat Pants

## Back Body

two sheets

Bonding line Ba

Seam allow

Bonding line AB

# DRCOS

SITE [http://dr-cos.info\(en\)](http://dr-cos.info(en)) [http://dr-cos.com\(jp\)](http://dr-cos.com(jp))  
MAIL [info@dr-cos.com](mailto:info@dr-cos.com)  
Twitter [https://twitter.com/drcos\\_com](https://twitter.com/drcos_com)  
facebook <https://www.facebook.com/drcoscom>

Bonding line Aa

Bonding line Ab

Bonding line BA



Bonding line BA

Bonding line Ba

Bonding line Bb



Grain Line

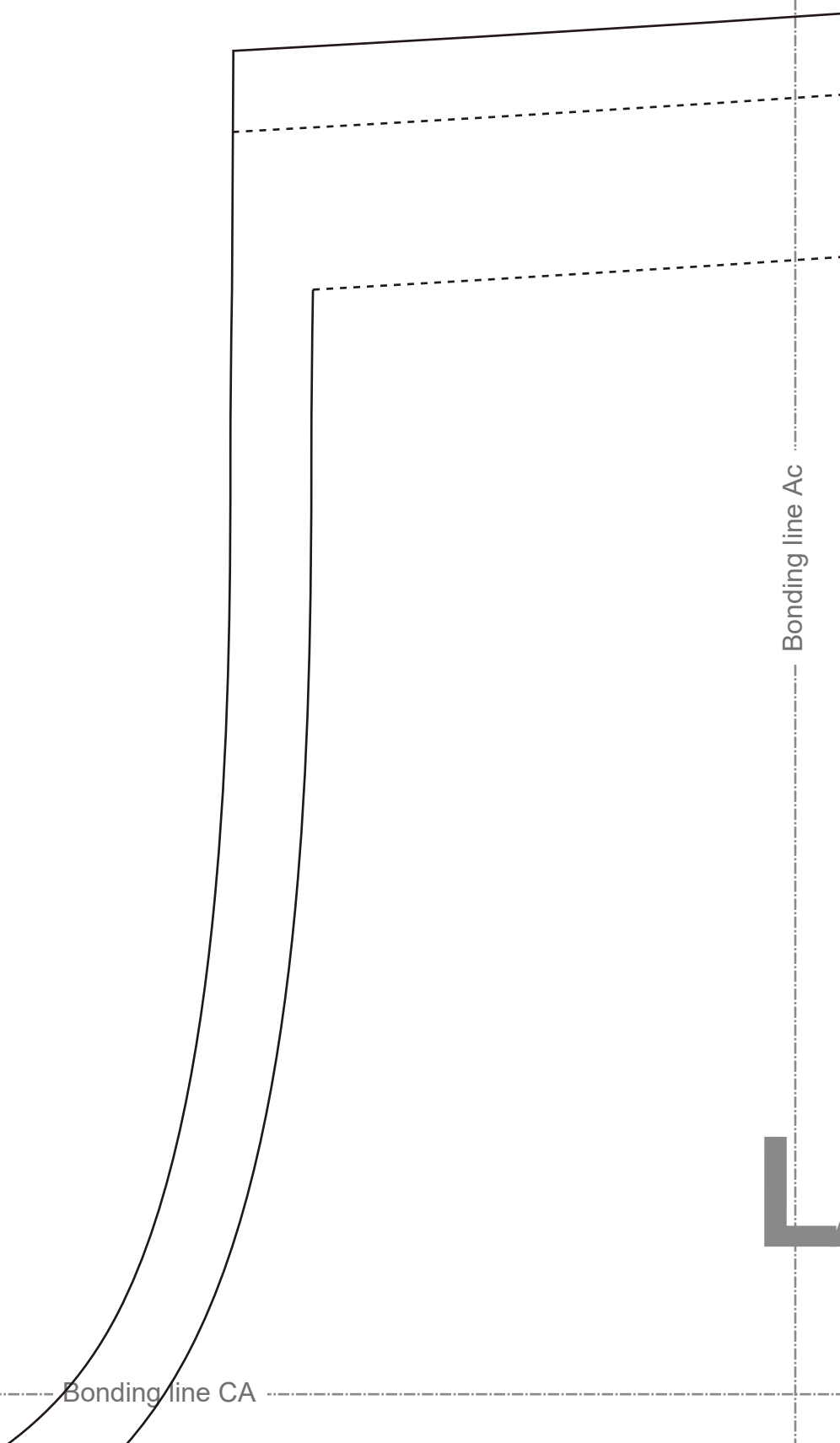
Seam allowance 1/2in.

Bonding line BB

Bonding line Ab

Bonding line Ac

Bonding line CA



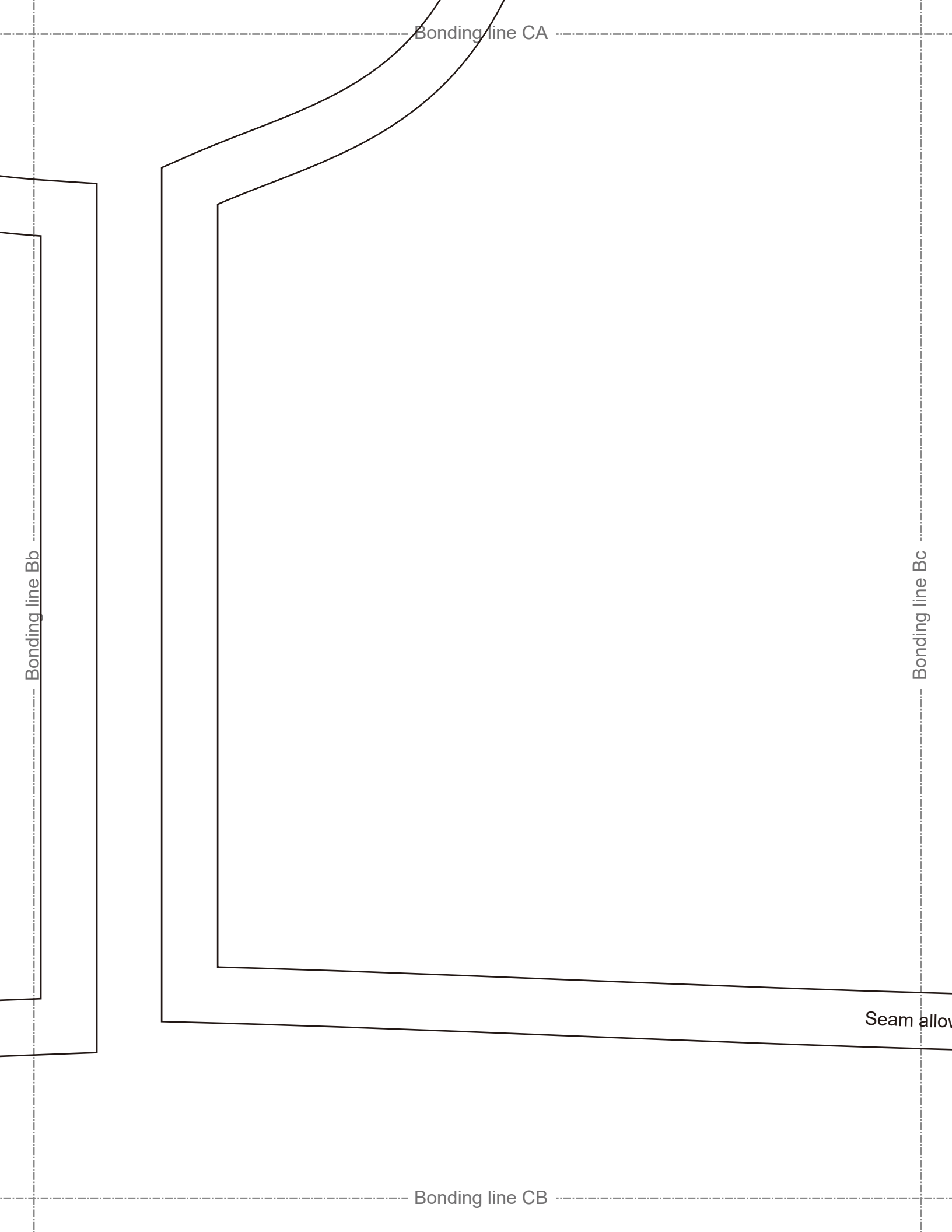
Bonding line CA

Bonding line Bb

Bonding line Bc

Seam allow

Bonding line CB



Trifold



**DRCOS**  
SITE [http://dr-cos.info\(en\)](http://dr-cos.info(en)) [http://dr-cos.com\(jp\)](http://dr-cos.com(jp))  
MAIL [info@dr-cos.com](mailto:info@dr-cos.com)  
Twitter [https://twitter.com/@drcos\\_com](https://twitter.com/@drcos_com)  
facebook <https://www.facebook.com/drcoscom>

Bonding line Ac

Bonding line Ad

**LADIES'S** size

Petticoat Pants  
Front Body

Bonding line DA

# Petticoat Pants

Front Body  
two sheets

Bonding line DA

Bonding line Bc



Grain Line

Bonding line Bd

hem allowance 1/2in.

Bonding line DB