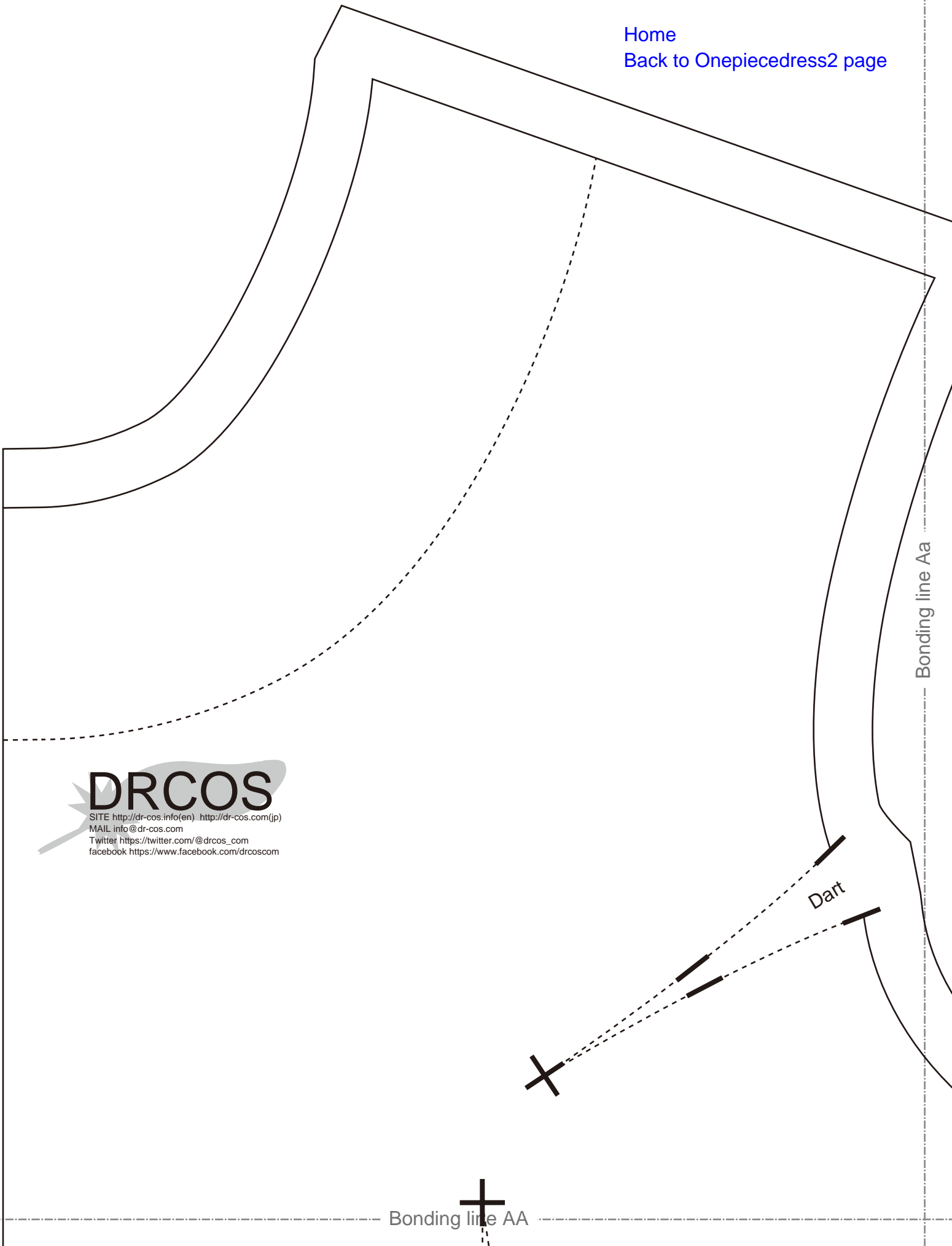


[Home](#)

[Back to Onepiecedress2 page](#)



**DRCOS**

SITE <http://dr-cos.info/en> <http://dr-cos.com/jp>

MAIL [info@dr-cos.com](mailto:info@dr-cos.com)

Twitter [https://twitter.com/drcos\\_com](https://twitter.com/drcos_com)

facebook <https://www.facebook.com/drcoscom>

Bonding line Aa

Dart

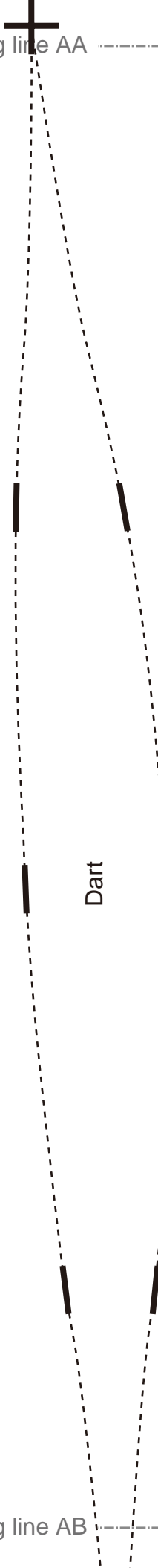
Bonding line AA

Bonding line AA

Bonding line AB

Bonding line Ba

Dart



Bonding line AB



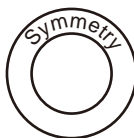
# LADIES'S

size

Onepiecedress2

Front Body

one sheets



Bonding line Ca

Bonding line AC

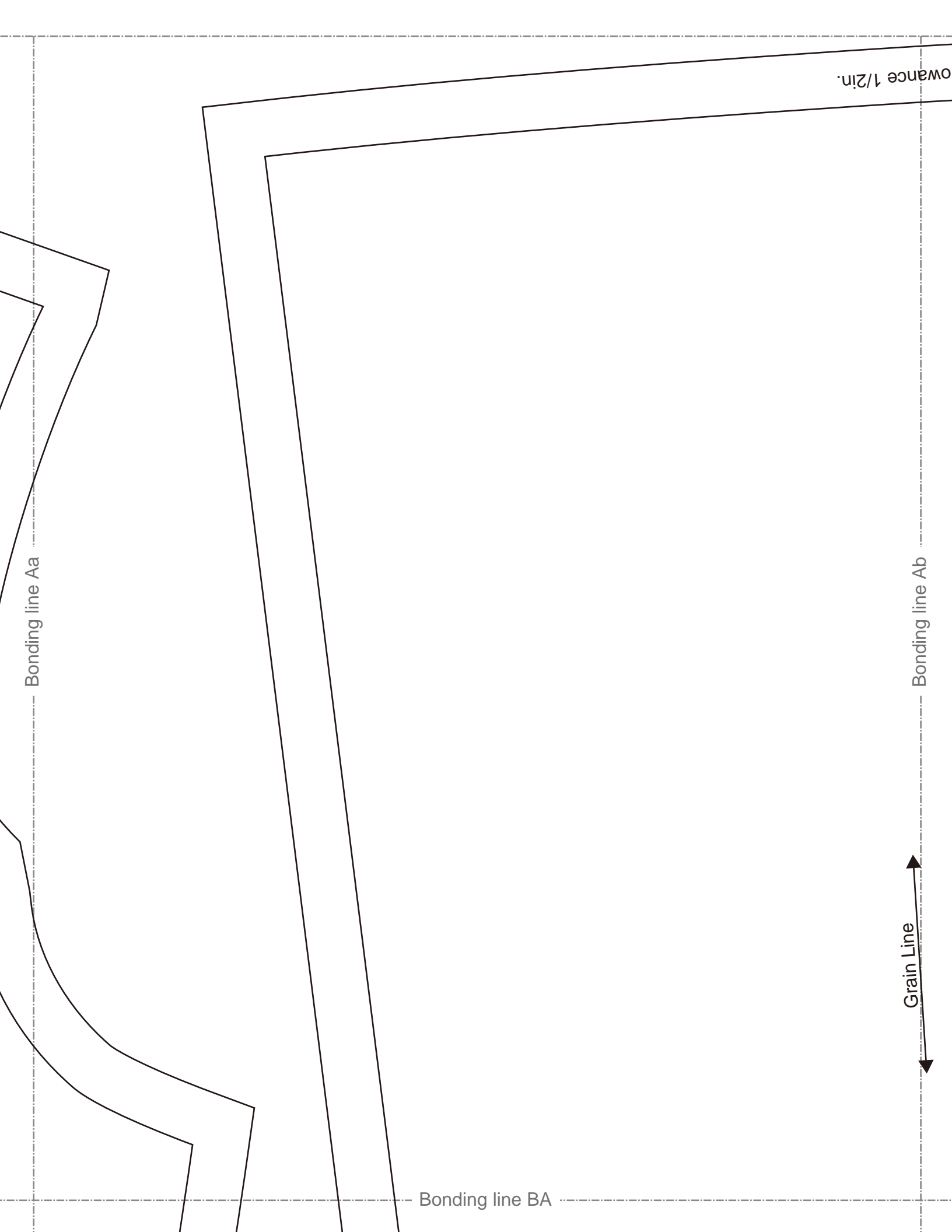
Bonding line AC



Bonding line Da

Seam allowance 1/2in.

Bonding line AD



Bonding line BA

Bonding line Ba

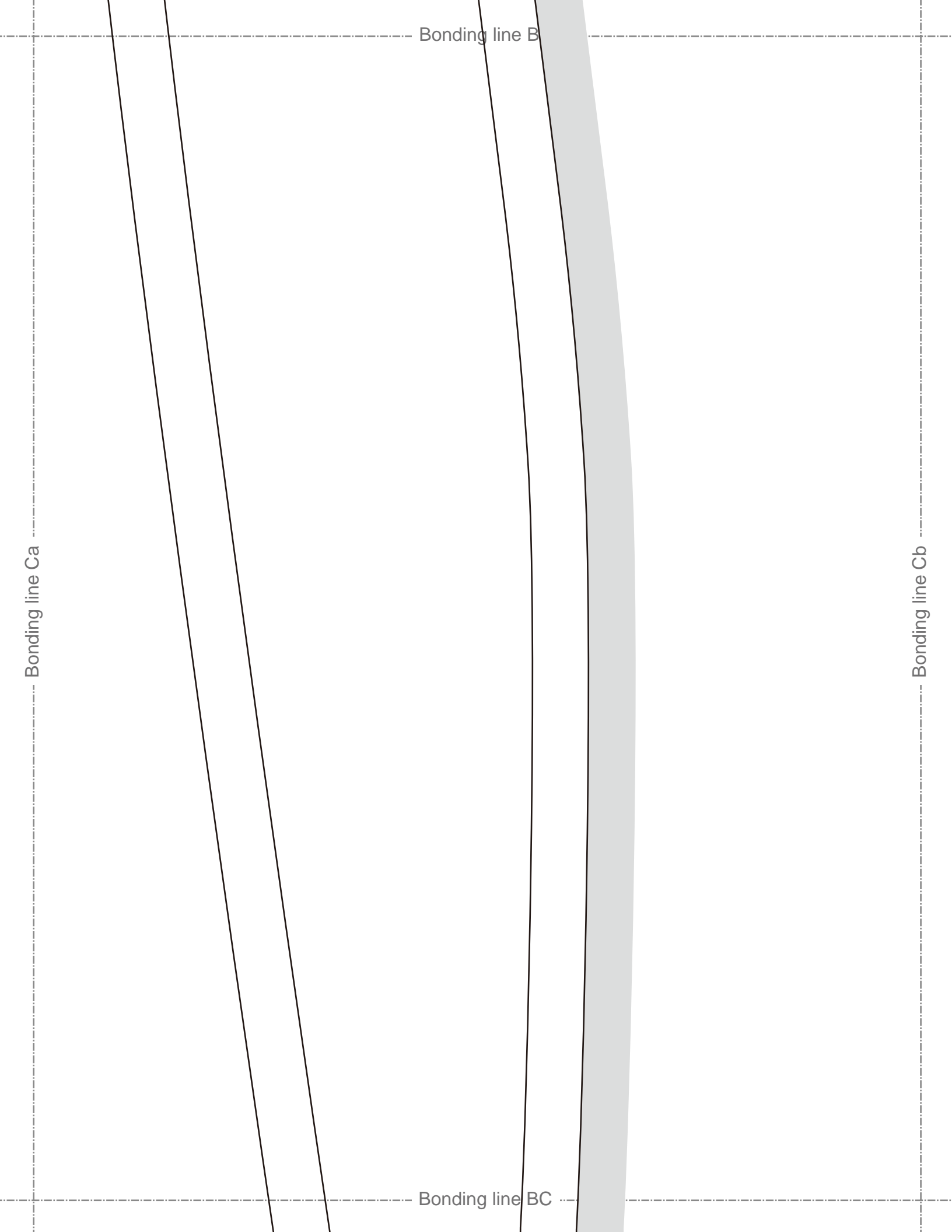
cedress2  
> Body  
Sheets



Bonding line Bb

Zip position

Bonding line B



Bonding line BC

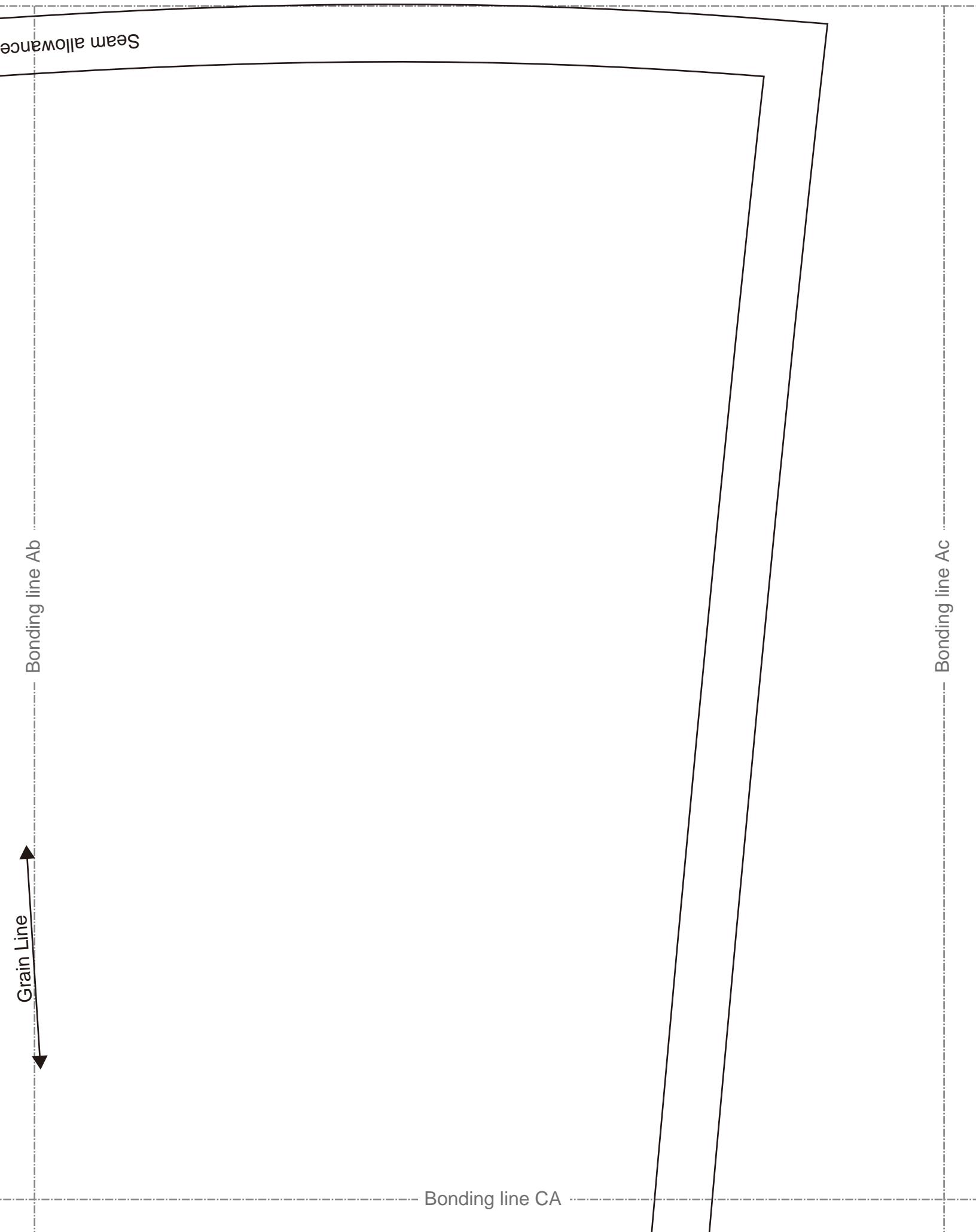
Bonding line Da

Bonding line Db

**DRCOS**  
SITE [http://dr-cos.info\(en\)](http://dr-cos.info/en) [http://dr-cos.com\(dp\)](http://dr-cos.com(dp))  
MAIL [info@dr-cos.com](mailto:info@dr-cos.com)  
TWITTER [https://twitter.com/dr-cos\\_com](https://twitter.com/dr-cos_com)  
FACEBOOK <https://www.facebook.com/drcoscom>

Bonding line BD





Bonding line CA

One pieced  
Back Bo  
two shee

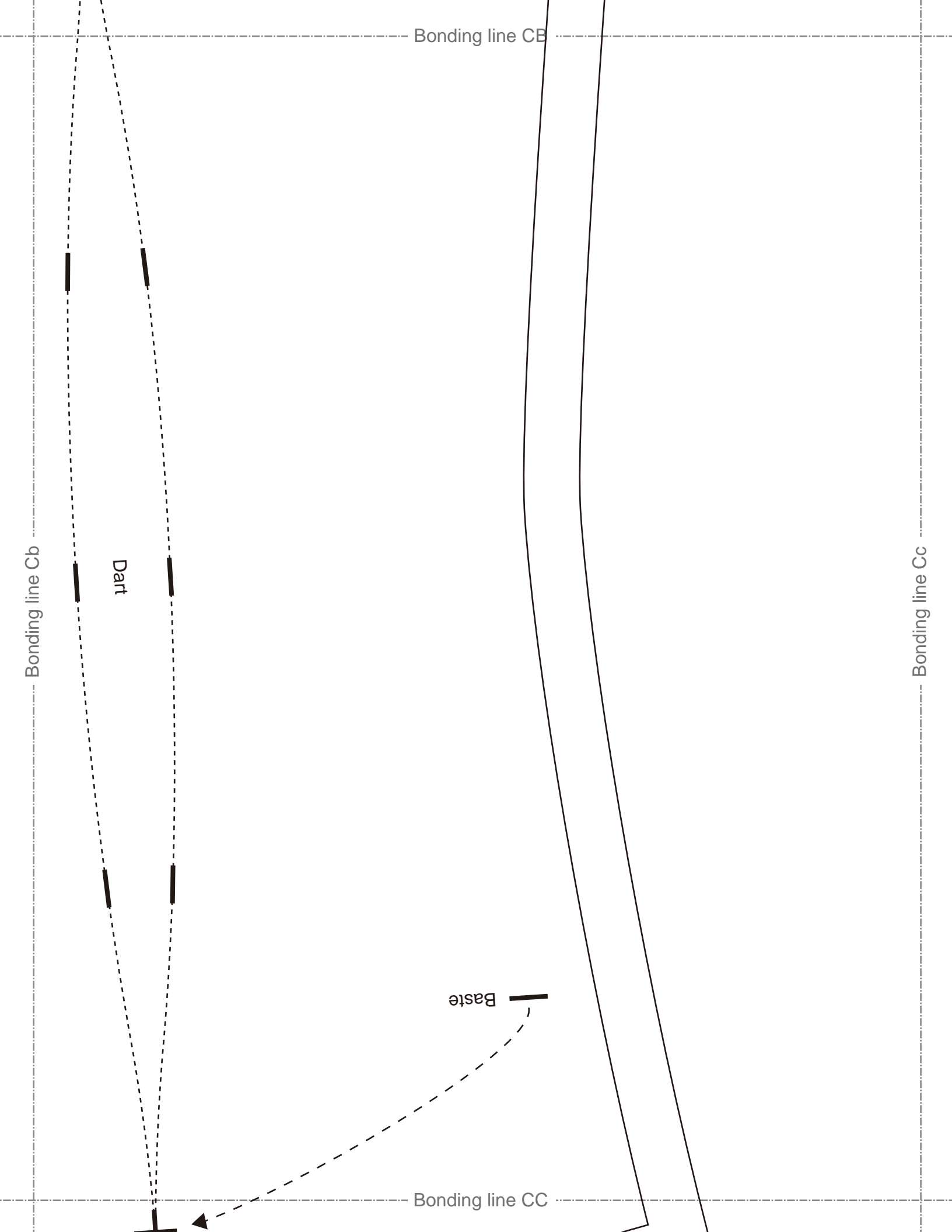
Bonding line Bb

LADIES



Bonding line CB

Bonding line Bc



Bonding line CB

Bonding line Cb

Dart

Bonding line Cc

Baste

Bonding line CC

Bonding line CC



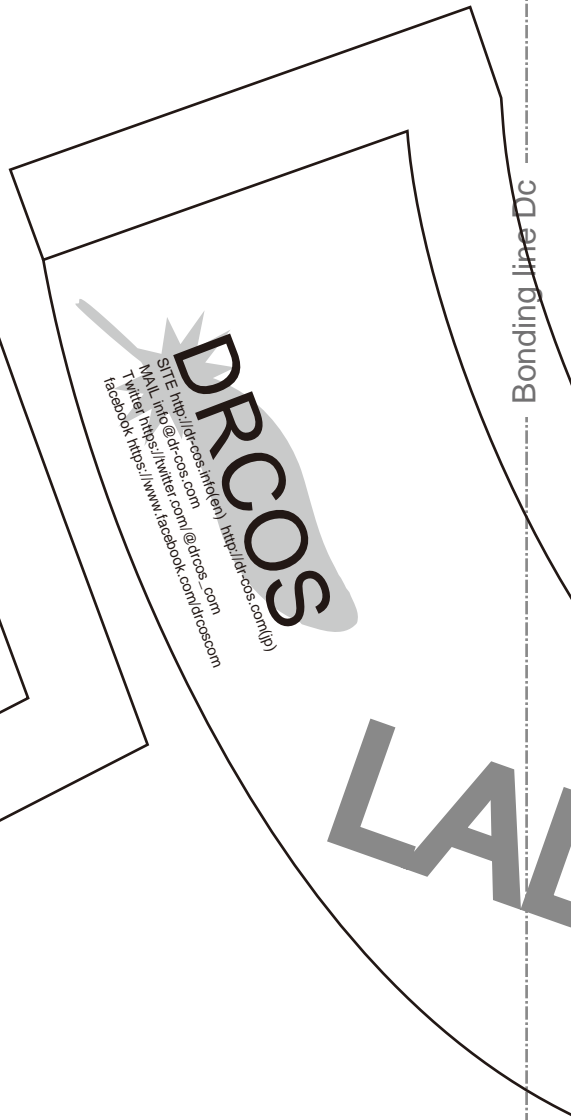
Bonding line Db



Dart

Bonding line Dc

Bonding line CD



**DRCCOS**

[SITE http://drccos.in/en/](http://drccos.in/en/) <http://drccos.com/>  
[MAIL info@drccos.com](mailto:info@drccos.com)  
[T. Twitter https://www.facebook.com/drccos.com/](https://www.facebook.com/drccos.com/)  
[facebook https://www.facebook.com/drccos.com/](https://www.facebook.com/drccos.com/)

LA

**DRCO**

SITE [http://dr-cos.info\(en\)](http://dr-cos.info(en)) <http://dr-cos.com>  
MAIL [info@dr-cos.com](mailto:info@dr-cos.com)  
Twitter [@drcos](https://twitter.com/@drcos)  
facebook <https://www.facebook.com/drcos>

Bonding line Ac

Bonding line Ad

Front

**LADIES**

Onepiecedress2  
Sleeve  
two sheets

Seam allowa

Bonding line DA

Bonding line DC

**DRCOS**  
3115 Bonding line DC (Email) [info@drcos.com](mailto:info@drcos.com)  
MAIL: [info@drcos.com](mailto:info@drcos.com)  
Twitter: <https://twitter.com/drcos>  
Facebook: <https://www.facebook.com/drcos.com>

**LADIES'**



One piece dress 2  
Facing  
two sheets  
Fusible interlining  
two sheets

Seam allowance 1/2in.

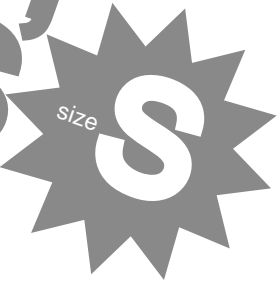
Grain Line

Seam allowance 1/2in.

Grain Line

One piece dress 2  
Facing  
One sheets  
Fusible interlining  
One sheets

**LADIES'**



Bonding line DD

Bonding line Dc

Bonding line Dd

**COS**  
s.info(en) http://dr-cos.com(jp)  
s.com  
ter.com/@drcos\_com  
www.facebook.com/drcoscom

Bonding line Ad  
S size S

ess2  
ts



Back

n allowance 1/2in.

Bonding line EA

Bonding line Ae