

Neck Corset
Hem bias
two sheets

Seam allowance 1/4in.



Neck Corset
Back body
two sheets
Lining Fabric
two sheets

Zip position

Stay tape position

Grain Line

1/4in C

Seam allowance
1/2in.

Hem bias

DRCOS
 SITE <http://dr-cos.info/en> <http://dr-cos.com/jp>
 EMAIL info@dr-cos.com
 TWITTER https://twitter.com/dr-cos_com
 FACEBOOK <https://www.facebook.com/drcoscom>

Seam allowance 1/4in.

Grain Line

Bonding line Aa

Bonding line AA

Bonding line Aa

Neck Corset
Front piece one sheets



SITE <http://dr-cos.info/en> <http://dr-cos.com/jp>
MAIL info@dr-cos.com
Twitter <https://twitter.com/dr-cos>
facebook <https://www.facebook.com/drcoscom>



Seam allowance 1/4in.

Cut

Seam allowance 1/4in.



Eyelet position



Neck Corset
Front body
two sheets
Lining Fabric
two sheets

Hem bias



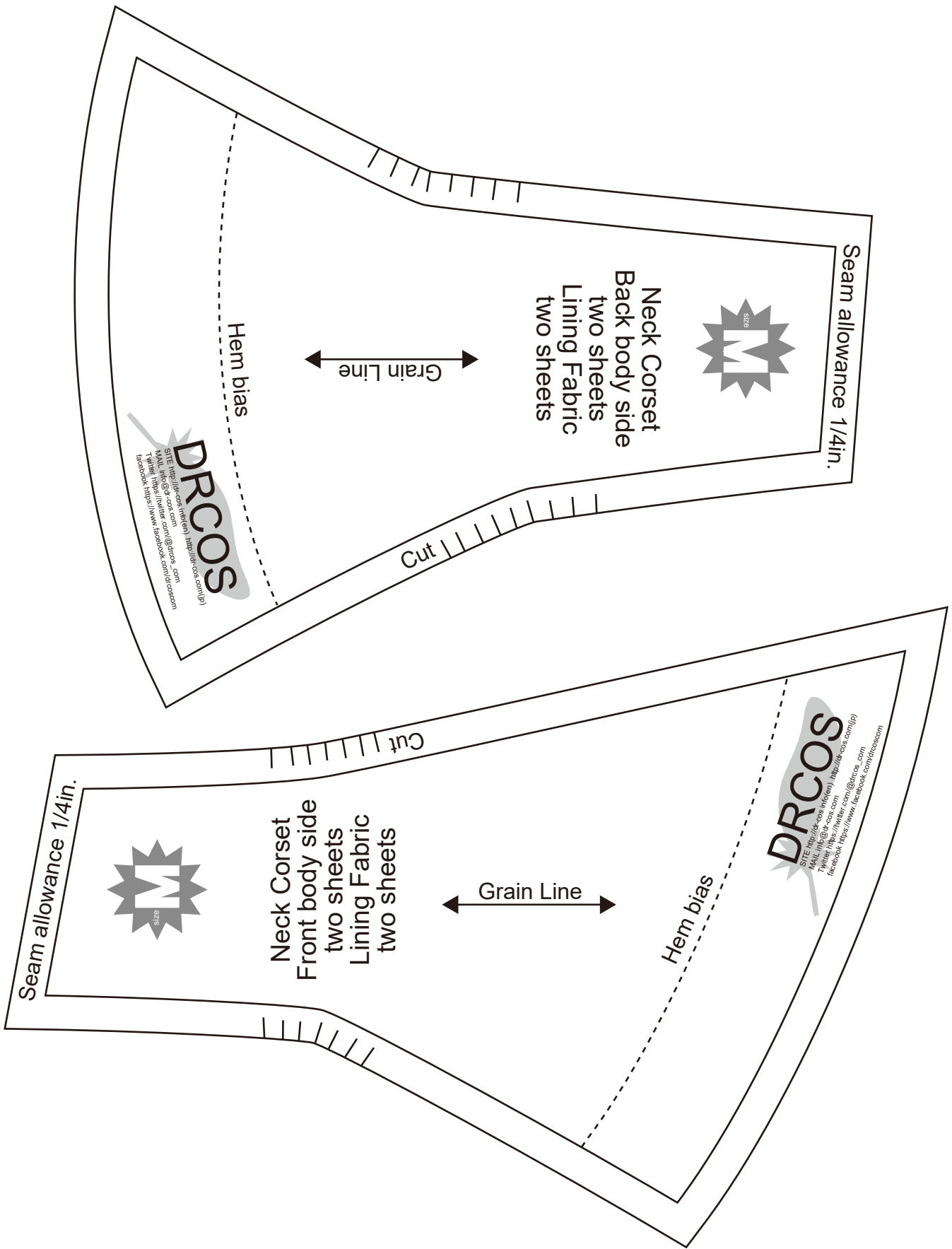
SITE <http://dr-cos.info/en> <http://dr-cos.com/jp>
MAIL info@dr-cos.com
Twitter <https://twitter.com/dr-cos>
facebook <https://www.facebook.com/drcoscom>



SITE <http://dr-cos.info/en> <http://dr-cos.com/jp>
MAIL info@dr-cos.com
Twitter <https://twitter.com/dr-cos>
facebook <https://www.facebook.com/drcoscom>

Bonding line Ab

Bonding line BA



Seam allowance 1/4in.



Neck Corset
Front body side
two sheets
Lining Fabric
two sheets

Grain Line

Hem bias



Cut

Seam allowance 1/4in.



Neck Corset
Back body side
two sheets
Lining Fabric
two sheets

Grain Line

Hem bias



Cut