



Neck Corset Front piece one sheets



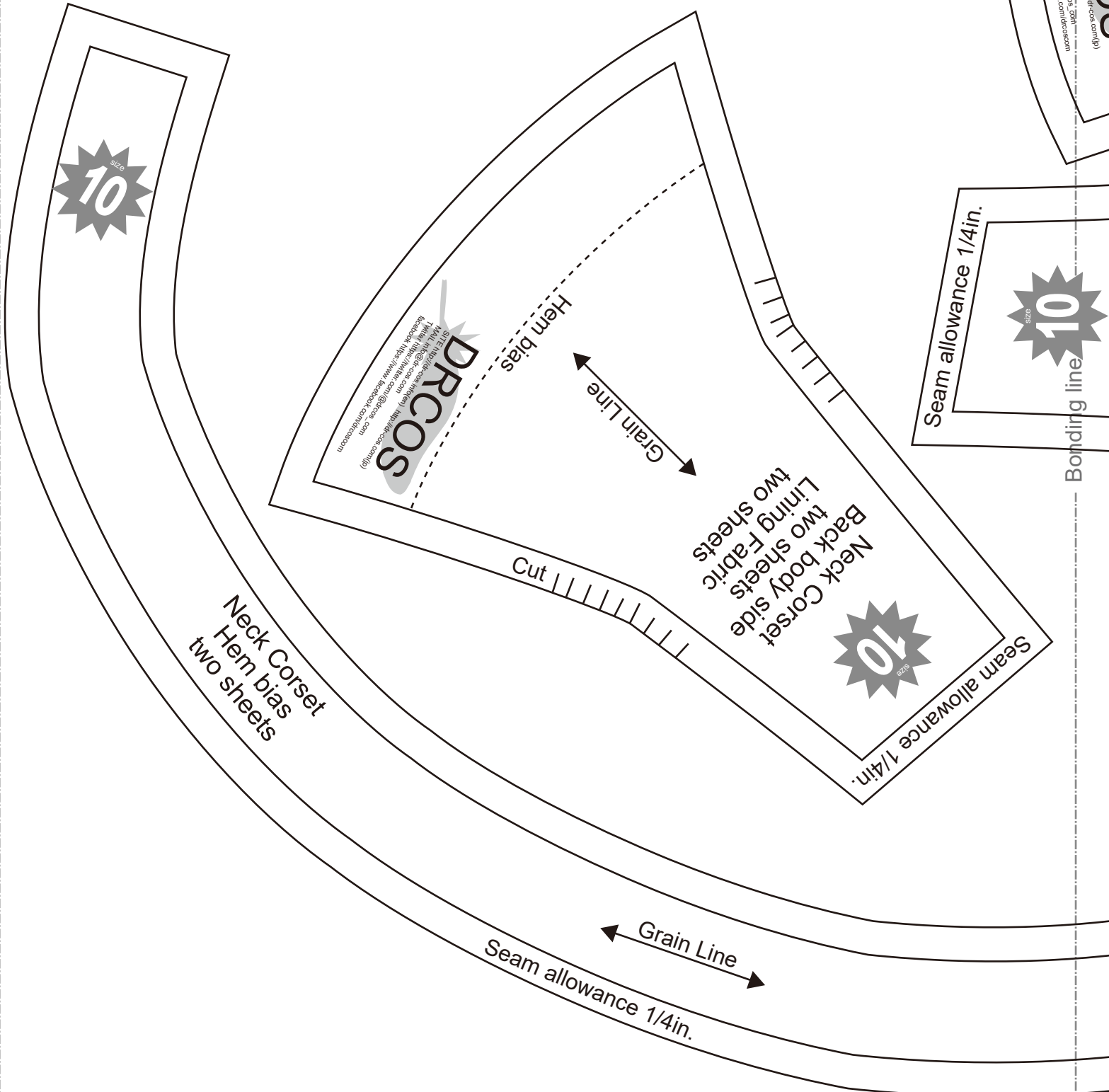
DRCOS

SITE <http://dr-cos.info/en> <http://dr-cos.com/jp>
MAIL info@dr-cos.com
Twitter https://twitter.com/drcos_com
facebook <https://www.facebook.com/drcoscom>

Seam allowance 1/4in.

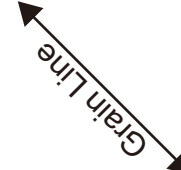
Seam allow
1/2in.

DRCOS
SITE <http://dr-cos.info/en> <http://dr-cos.com/jp>
MAIL info@dr-cos.com @drcos_09n
Twitter https://twitter.com/drcos_com
facebook <https://www.facebook.com/drcoscom>



DRCOS
SITE <http://dr-cos.info/en> <http://dr-cos.com/jp>
MAIL info@dr-cos.com @drcos_09n
Twitter https://twitter.com/drcos_com
facebook <https://www.facebook.com/drcoscom>

Hem bias



Neck Corset
Back body side
Lining Fabric
two sheets



Seam allowance 1/4in.

Neck Corset
Hem bias
two sheets

Cut



Seam allowance 1/4in.

Seam allowance 1/4in.



Bonding line

Bonding line AA

Seam allowance 1/2in.

Zip position

Stay tape position

Neck Corset
Back body
two sheets
Lining Fabric
two sheets



Grain Line

Hem bias

Cut

Seam allowance 1/4in.

DRCOS
SITE <http://drcos.info/en> <http://drcos.com/jp>
MAIL info@drcos.com drcos.com
Twitter <https://twitter.com/drcos>
facebook <https://www.facebook.com/drcoscom>

Seam allowance 1/4in.



Grain Line

Eyelet position

Neck Corset
Front body
two sheets
Lining Fabric
two sheets

Cut

Hem bias

Grain Line

Neck Corset
Front body side
two sheets
Lining Fabric
two sheets

Cut

DRCOS
SITE <http://drcos.info/en> <http://drcos.com>
MAIL info@drcos.com drcos.com
Twitter <https://twitter.com/drcos>
facebook <https://www.facebook.com/drcoscom>

10
Bonding line

DRCOS
SITE <http://drcos.info/en> <http://drcos.com/jp>
MAIL info@drcos.com drcos.com
Twitter <https://twitter.com/drcos>
facebook <https://www.facebook.com/drcoscom>

DRCOS
SITE <http://drcos.info/en> <http://drcos.com/jp>
MAIL info@drcos.com drcos.com
Twitter <https://twitter.com/drcos>
facebook <https://www.facebook.com/drcoscom>

Hem bias

Bonding line BA

Bonding line Ab