

Seam allowance 1/2in.

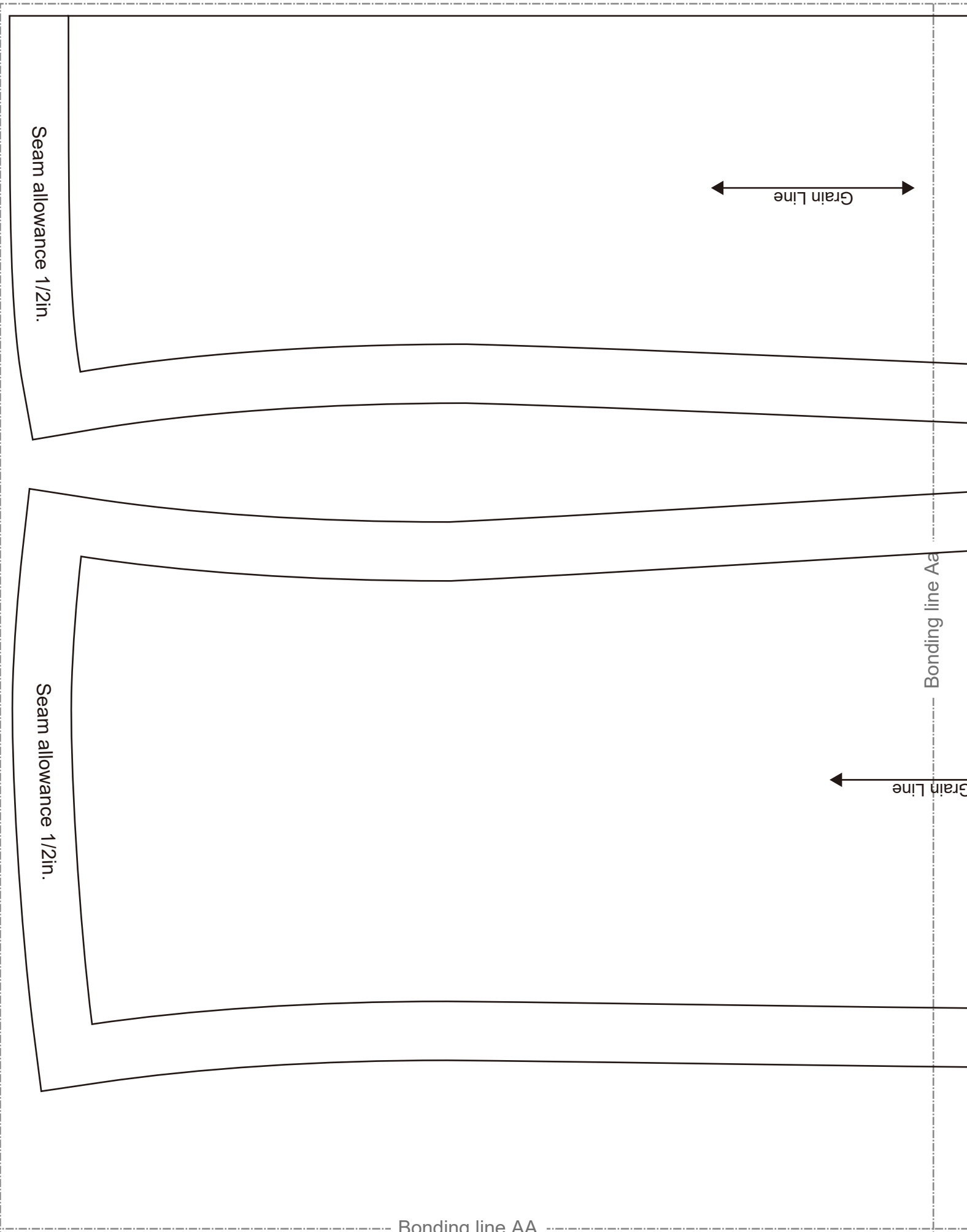
Grain Line

Seam allowance 1/2in.

Grain Line

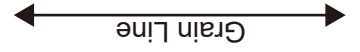
Bonding line Aa

Bonding line AA



Bonding line AA

Seam allowance 1/2in.



Bonding line Ba

**Mermaiddress  
Back Body  
two sheets**

Seam allowance 1/2in.

Bonding line AB

**Front Body  
one sheets**



Slit position

**Mermaidress  
Front Body Side  
two sheets**



Bonding line Ab

Bonding line Aa

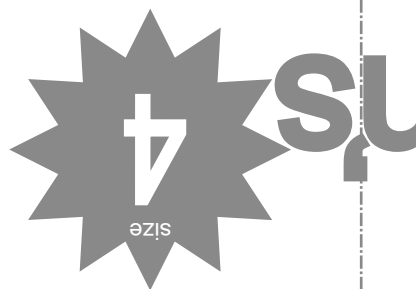
Bonding line BA

Grain Line



Bonding line BA

Mermaidress  
Back Body Side  
two sheets



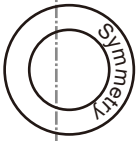
Bonding line Ba

Bonding line Bb

Baste



Bonding line BB



Children's

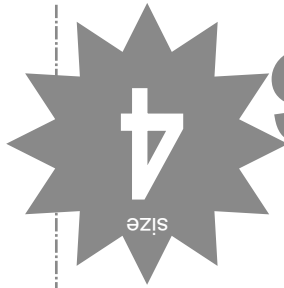
Mermaiddress

Front Body

one sheets

Bonding line Ab

Bonding line Ac



Children's

Bonding line CA

Bonding line CA

Children's

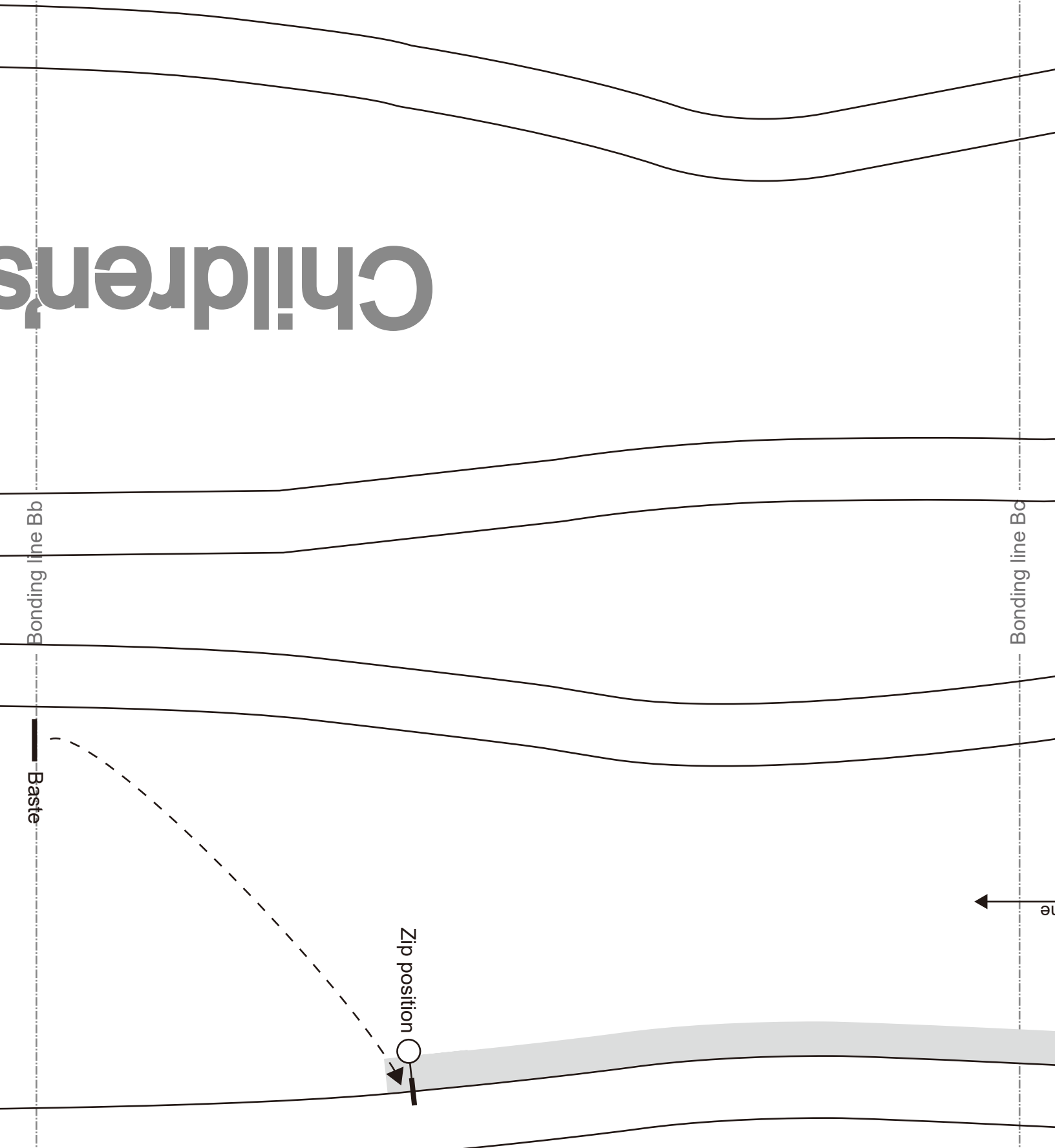
Bonding line Bb

Bonding line Bc

Baste

Zip position

Bonding line CB



# DRCOS

SITE <http://dr-cos.info/en> | <http://dr-cos.com/jp>  
MAIL [info@dr-cos.com](mailto:info@dr-cos.com)  
Twitter [@drcos\\_com](https://twitter.com/@drcos_com)  
facebook <https://www.facebook.com/drcoscom>

Facing Line

# DRCOS

SITE <http://dr-cos.info/en> | <http://dr-cos.com/jp>  
MAIL [info@dr-cos.com](mailto:info@dr-cos.com)  
Twitter [@drcos\\_com](https://twitter.com/@drcos_com)  
facebook <https://www.facebook.com/drcoscom>

Bonding line Ac

Bonding line Ad

Bonding line DA

Bonding line DA

**DRCOS**  
 SITE <http://dr-cos.info/en> <http://dr-cos.com/jp>  
 MAIL [info@dr-cos.com](mailto:info@dr-cos.com)  
 Twitter <https://twitter.com/@drcos>  
 facebook <https://www.facebook.com/drcoscom>

Bonding line Bd

**DRCOS**  
 SITE <http://dr-cos.info/en> <http://dr-cos.com/jp>  
 MAIL [info@dr-cos.com](mailto:info@dr-cos.com)  
 Twitter <https://twitter.com/@drcos>  
 facebook <https://www.facebook.com/drcoscom>

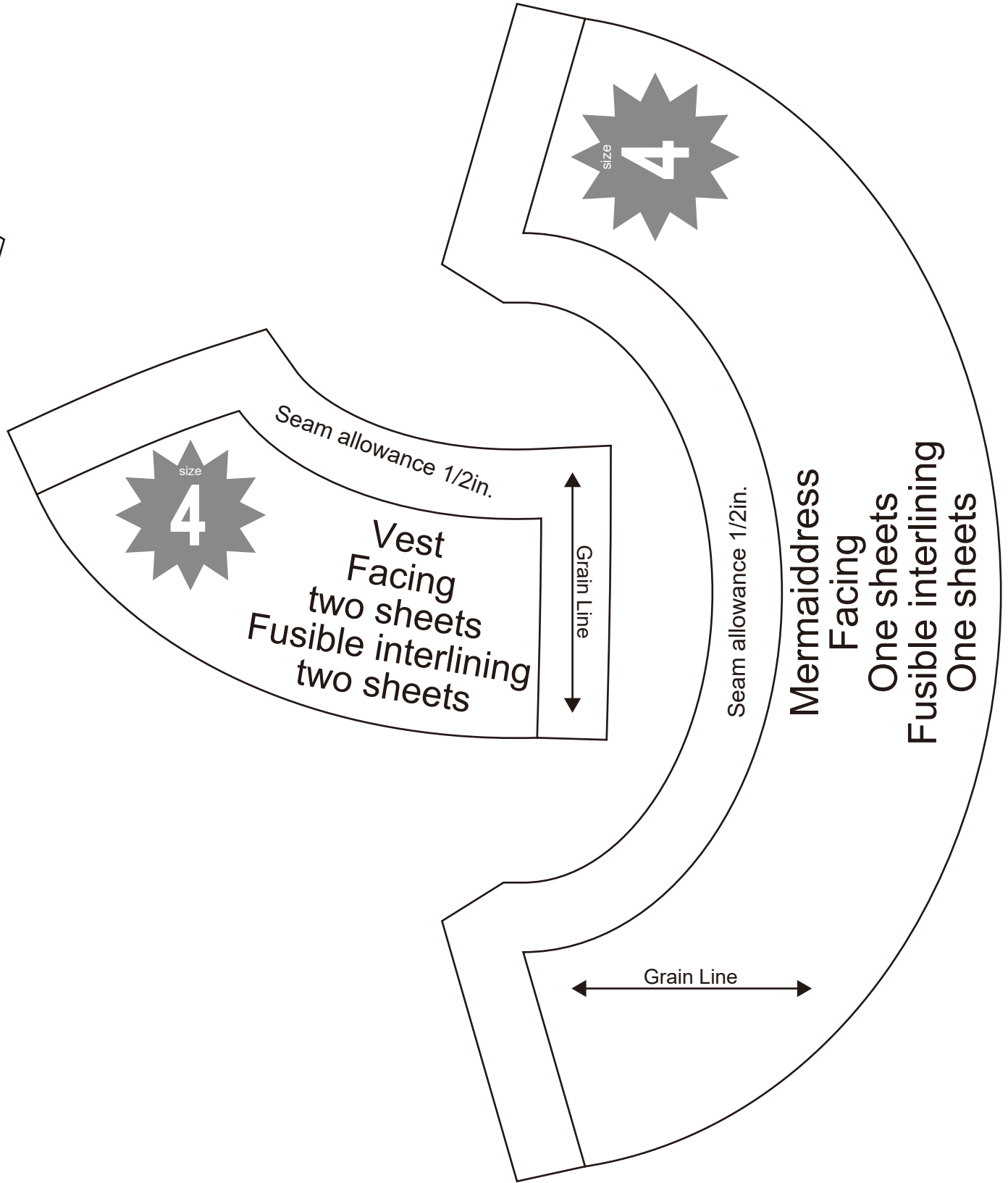
Bonding line Bd

Facing Line

Grain Line

Bonding line DB



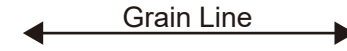


**DRCOS**

SITE <http://dr-cos.info/en> <http://dr-cos.com/jp>  
MAIL [info@dr-cos.com](mailto:info@dr-cos.com)  
Twitter [https://twitter.com/drcos\\_com](https://twitter.com/drcos_com)  
facebook <https://www.facebook.com/drcos.com>

# Children's <sup>size</sup> 4

Front



Mermaid dress  
Sleeve  
two sheets

Back

Seam allowance 1/2in.