

Seam allowance 1/2in.

n.

Bonding line Aa

Bonding line AA

Bonding line AA

Mermaidress  
Back Body  
two sheets

# Children's <sup>size</sup> 10

Bonding line AB

Bonding line Ba

s  
de

Bonding line AB

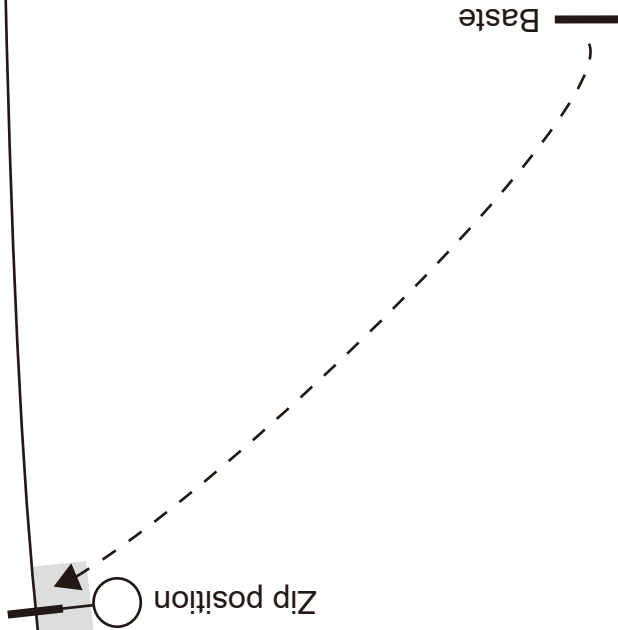
Baste

Zip position

Bonding line Ca

Bonding line AC

in Line



Grain Line



Bonding line AC

Bonding line Da

Facing Line

SITE <http://dr-cos.info/en> <http://dr-cos.com/jp>  
MAIL [info@dr-cos.com](mailto:info@dr-cos.com)  
Twitter <https://twitter.com/dr-cos>  
facebook <https://www.facebook.com/dr-cos.com>

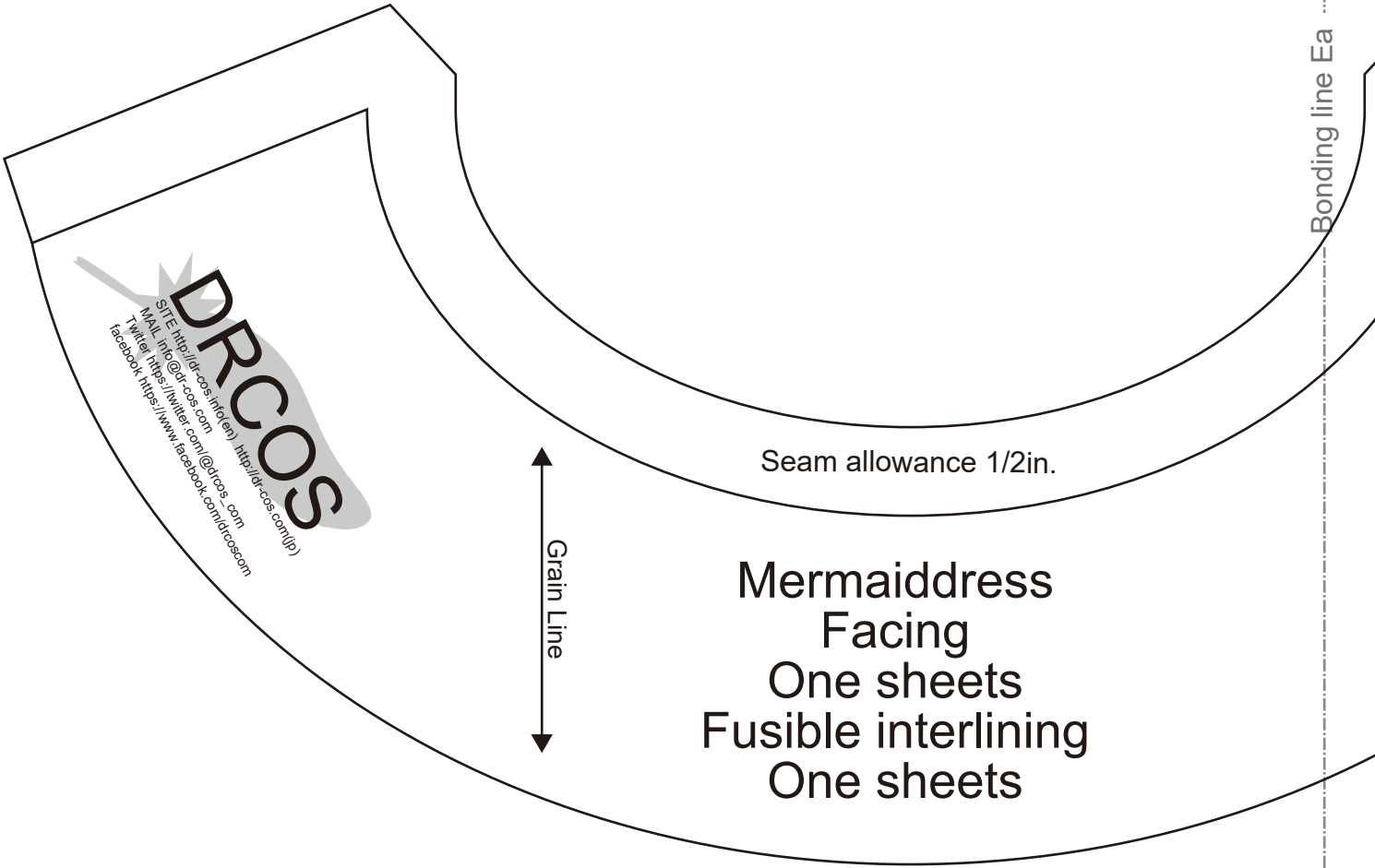
**DRCOS**

Bonding line AD

Bonding line AD

Bonding line Ea

Bonding line AE

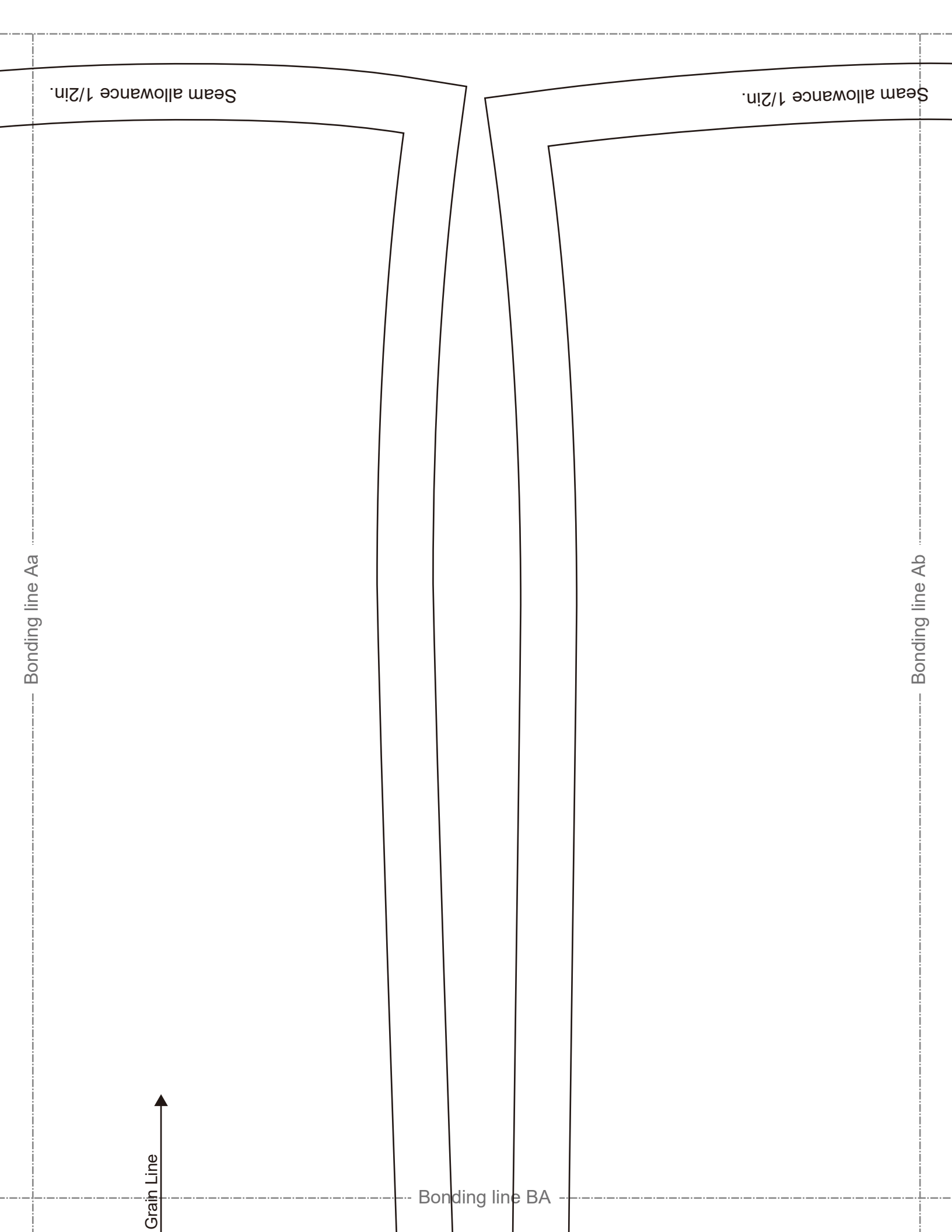


**DRCOS**  
SITE: <http://drcos.intel/en> / <http://drcos.com>  
MAIL: [info@drcos.com](mailto:info@drcos.com)  
Twitter: <https://twitter.com/drcos>  
facebook: <https://www.facebook.com/drcos.com>

Seam allowance 1/2in.

Grain Line

Mermaid dress  
Facing  
One sheets  
Fusible interlining  
One sheets



Bonding line Aa

Bonding line Ab

Bonding line BA

Grain Line

Seam allowance 1/2in.

Seam allowance 1/2in.

Bonding line Ba

Grain Lin



Bonding line BA

Grain Line



Bonding line Bb

Mermaid address  
Back Body Side  
two sheets

Mermaid address  
Front Body Side  
two sheets

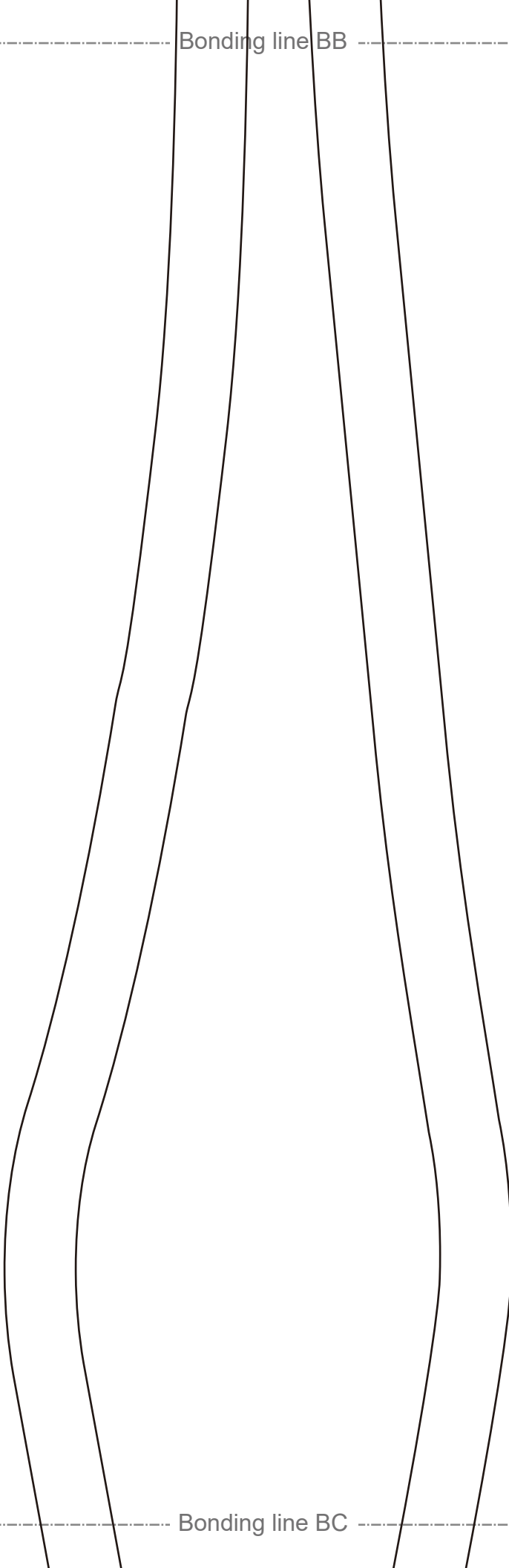
Bonding line BB



Bonding line Ca

size  
**Children's 10**

Bonding line BB



Bonding line BC

size  
**Children's 10**

Bonding line Cb



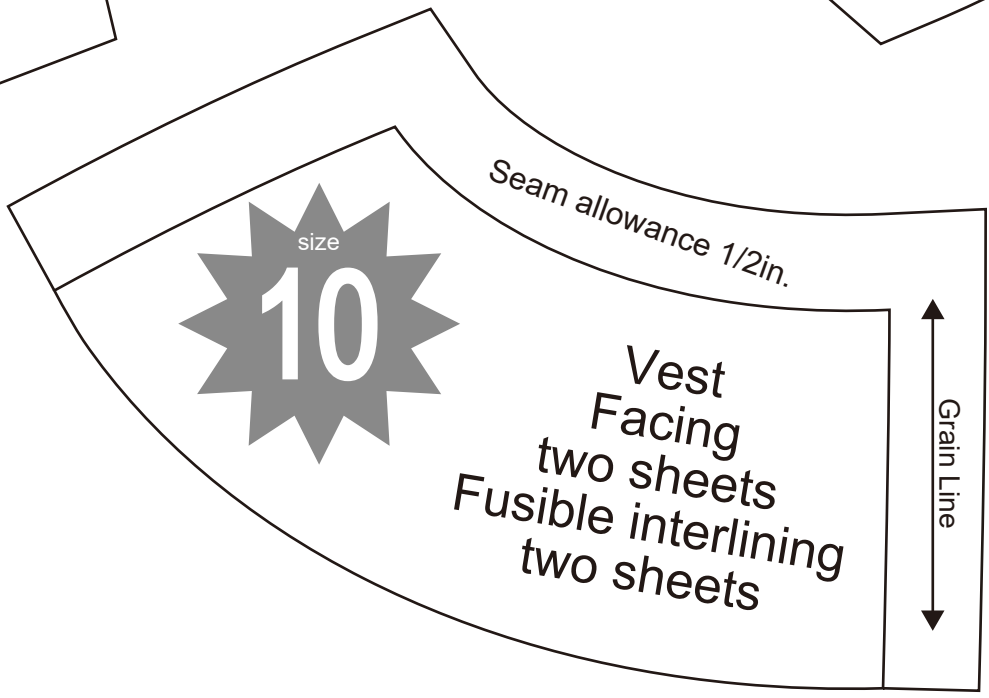
Bonding line BC

**DRCOS**  
 SITE <http://dr-cos.info/en> <http://dr-cos.com/jp>  
 MAIL [info@dr-cos.com](mailto:info@dr-cos.com)  
 TWITTER [https://twitter.com/drcos\\_com](https://twitter.com/drcos_com)  
 FACEBOOK <https://www.facebook.com/drcoscom>

**DRCOS**  
 E <http://dr-cos.info/en> <http://dr-cos.com/jp>  
 L [info@dr-cos.com](mailto:info@dr-cos.com)  
 TWITTER [https://twitter.com/drcos\\_com](https://twitter.com/drcos_com)  
 FB <https://www.facebook.com/drcoscom>

Bonding line Da

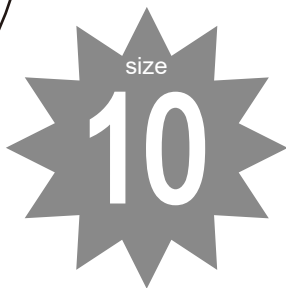
Bonding line Db



Bonding line BD

Bonding line BD

Bonding line Ea



Front



Child

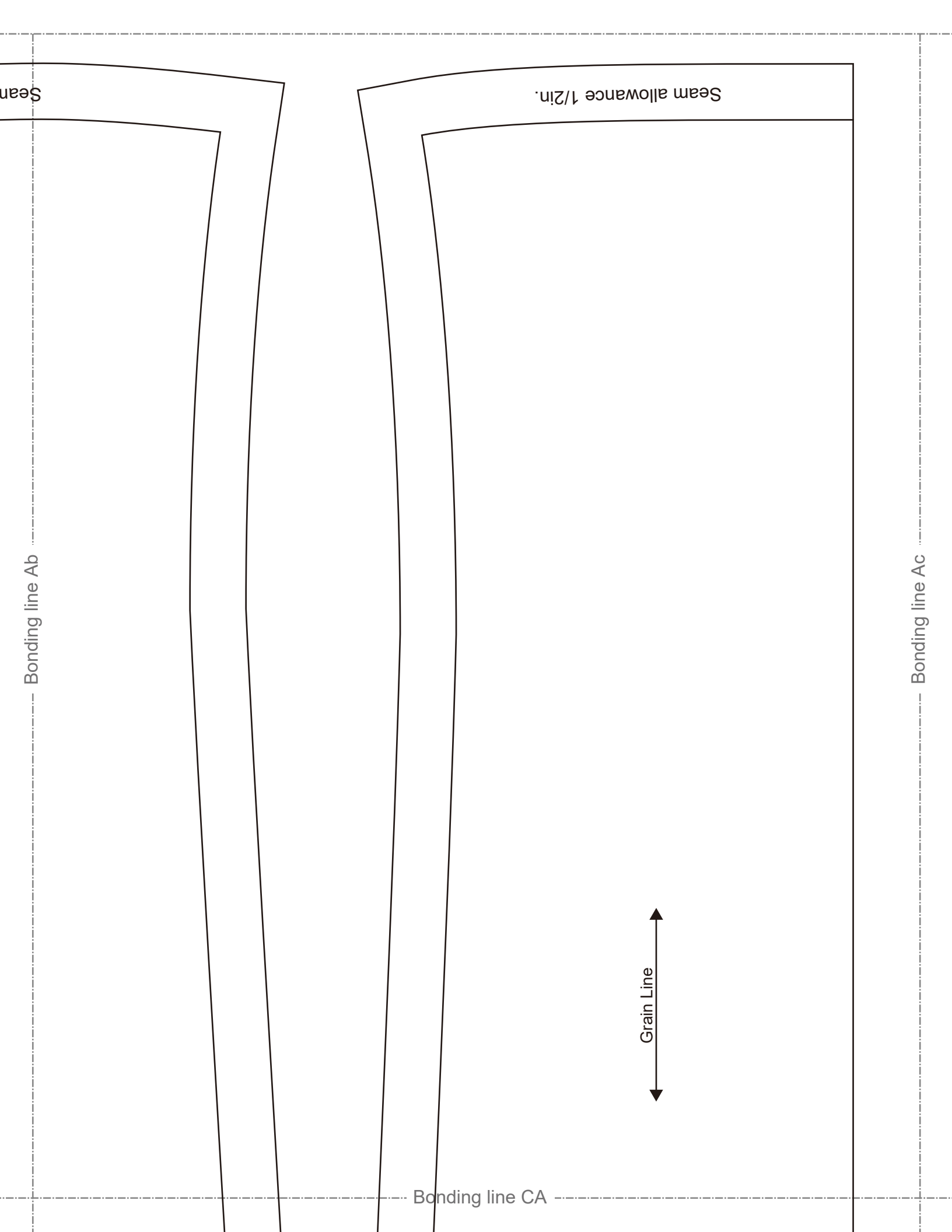
M

Seam

Bonding line BE

Bonding line Eb

DI  
SITE http  
MAIL info  
Twitter ht  
facebook



Bonding line Ab

Bonding line CA

Bonding line Ac

Grain Line

Seam allowance 1/2in.

Seam

Bonding line CA

Bonding line Bb

Bonding line Bc

Mermaid  
Front  
two

Mermaid  
Front Body  
one sheets



Slit position

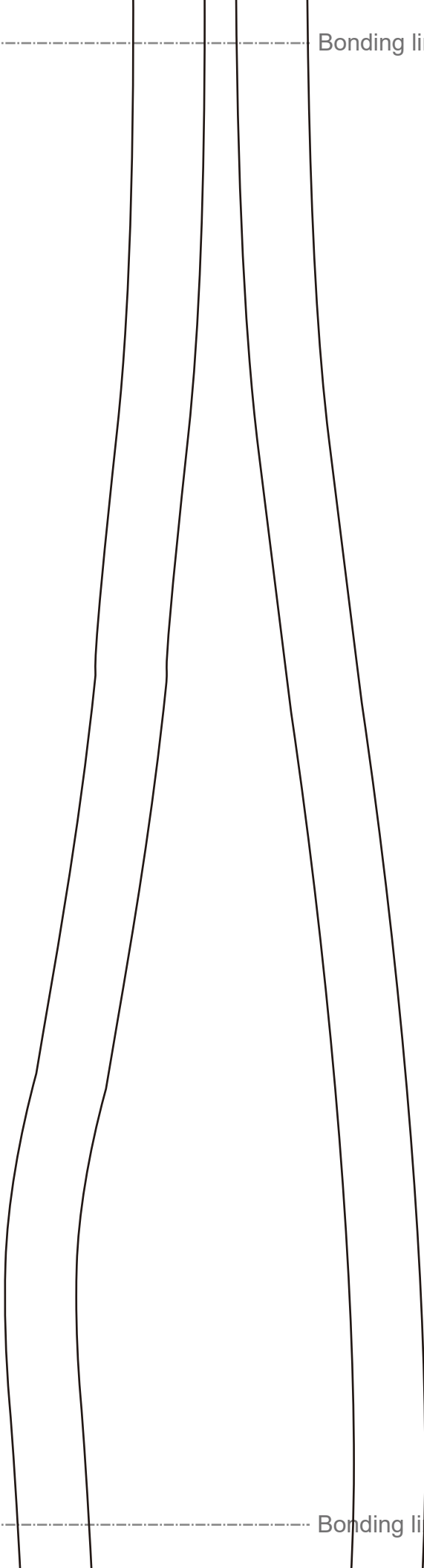


Bonding line CB

**Originals**

Bonding line Cb

Bonding line CB



**Children's** <sup>size</sup> **10**

Bonding line CC

Bonding line Cc

Bonding line CC

Bonding line Db

Bonding line Dc

**DRCOS**  
SITE <http://dr-cos.info>  
MAIL [info@dr-cos.co](mailto:info@dr-cos.co)  
Twitter <https://twitter>  
facebook <https://www>

**DRCOS**  
SITE [http://dr-cos.info\(en\)](http://dr-cos.info(en)) [http://dr-cos.com\(jp\)](http://dr-cos.com(jp))  
MAIL [info@dr-cos.com](mailto:info@dr-cos.com)  
Twitter [https://twitter.com/@drcos\\_com](https://twitter.com/@drcos_com)  
facebook <https://www.facebook.com/drcoscom>

Facing Line

Bonding line CD

Bonding line CD

**DRCOS**

SITE [http://dr-cos.info\(en\)](http://dr-cos.info(en)) [http://dr-cos.com\(jp\)](http://dr-cos.com(jp))  
MAIL [info@dr-cos.com](mailto:info@dr-cos.com)  
Twitter [https://twitter.com/drcos\\_com](https://twitter.com/drcos_com)  
facebook <https://www.facebook.com/drcoscom>

Bonding line Eb

Children's **10**

size

Back

Mermaidress  
Sleeve  
two sheets

Bonding line Ec

Seam allowance 1/2in.

Bonding line CE