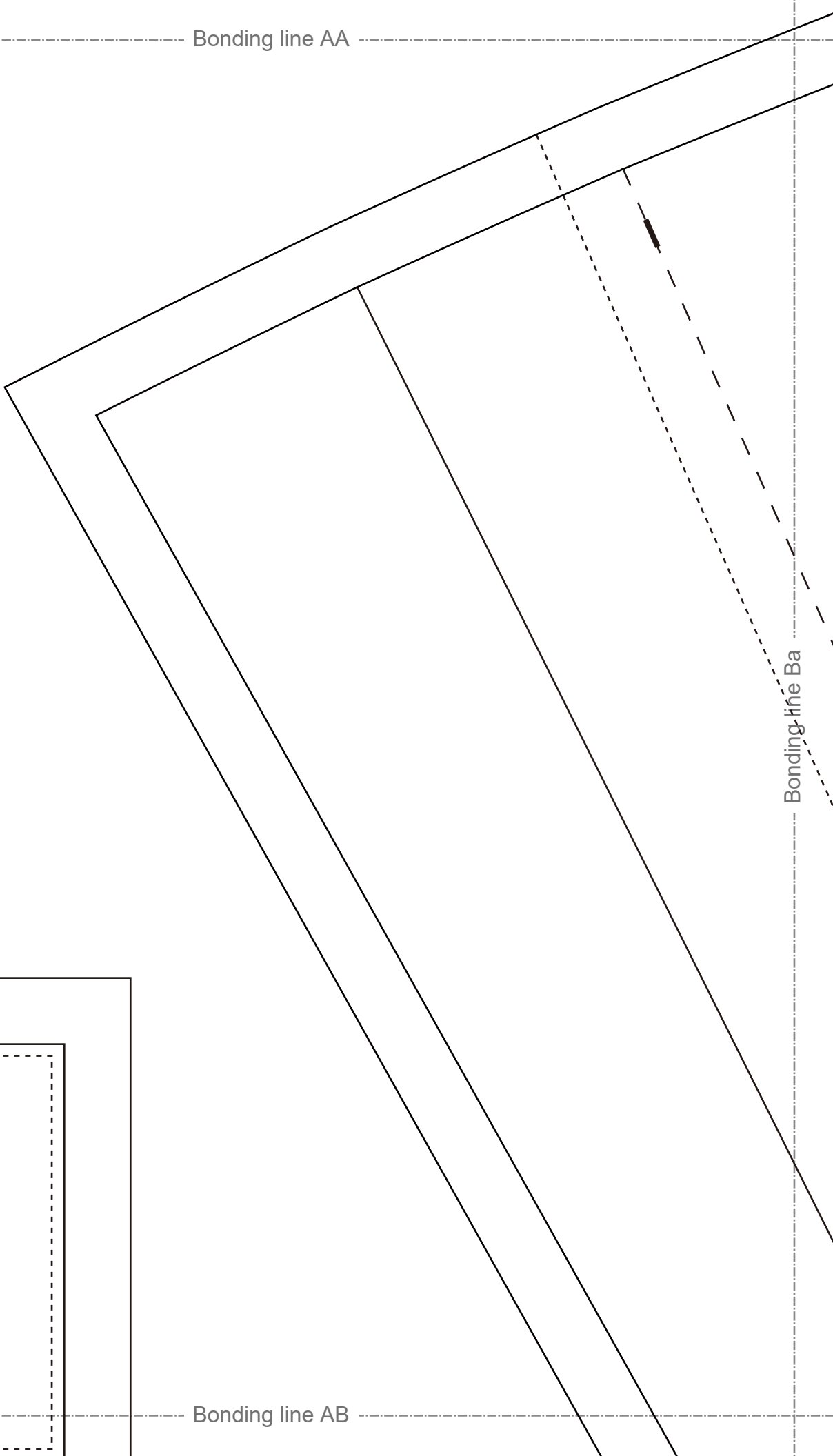
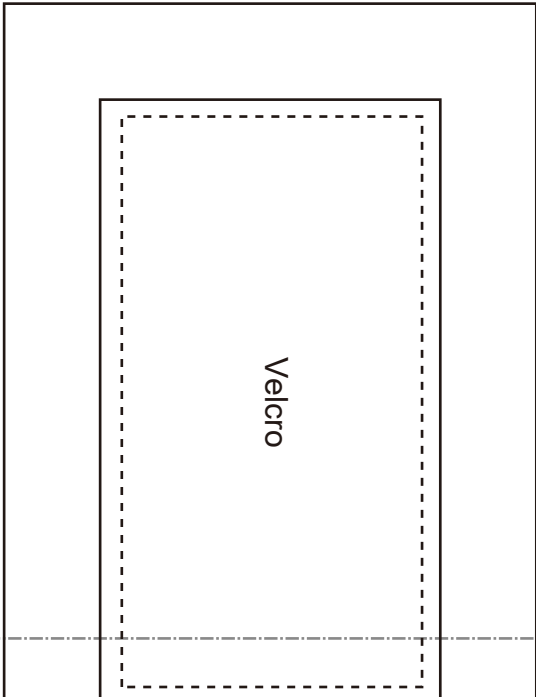


Bonding line AA

Bonding line Ba

Bonding line AB

Velcro



Bonding line AB



match marks

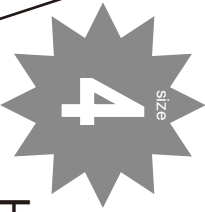


Seam allowance 1/2in.

Bonding line AC

Bonding line Ca

Seam allowance 1/2in.



Hakama (Mebakama)

koshita two sheets

Fusible interlining one sheets

match marks



Bonding line AC

Bonding line AD

Hakama (Mebakama)

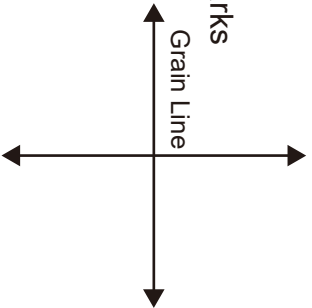
waistband two sheets.

Fusible interlining one sheets

match marks



Grain Line



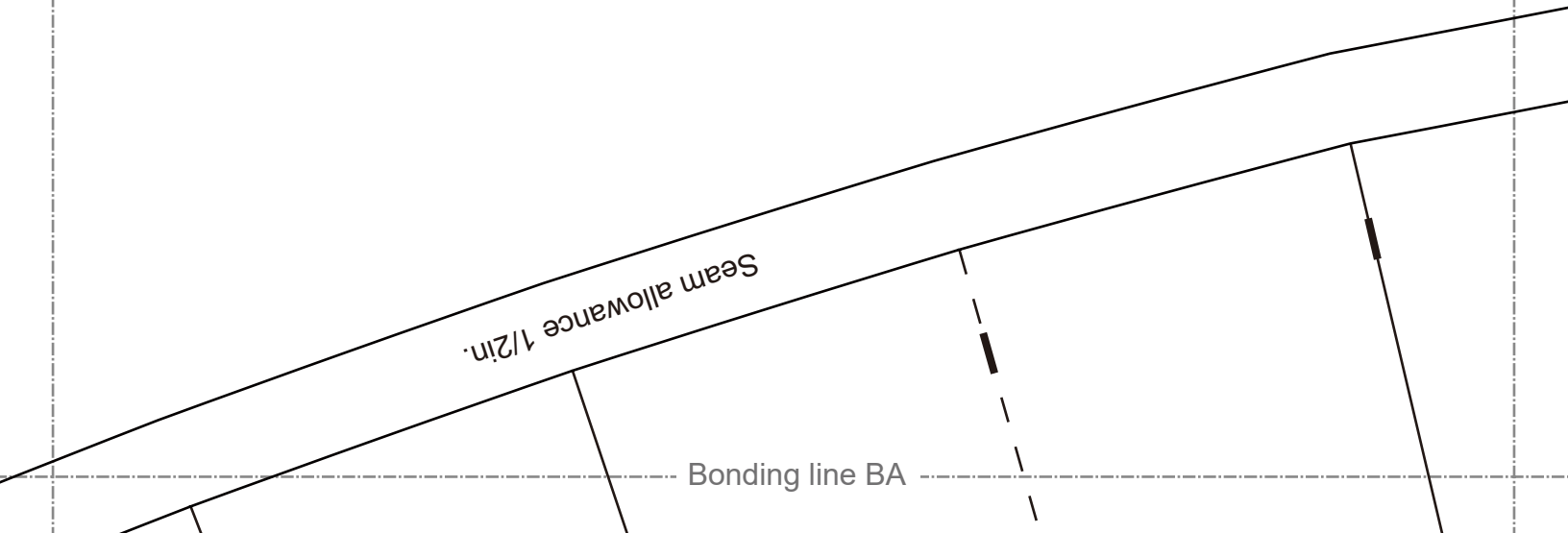
Velcro

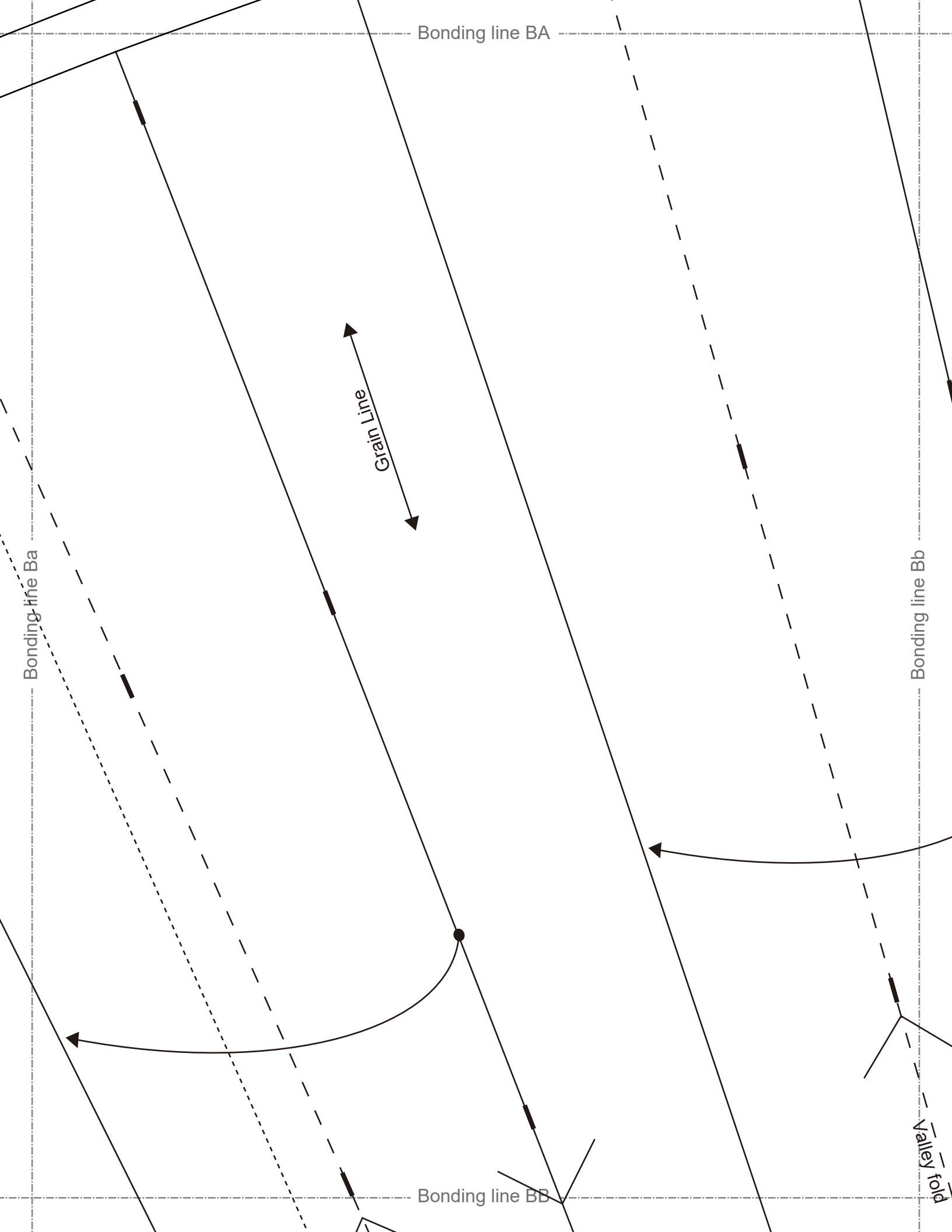
Bonding line Aa

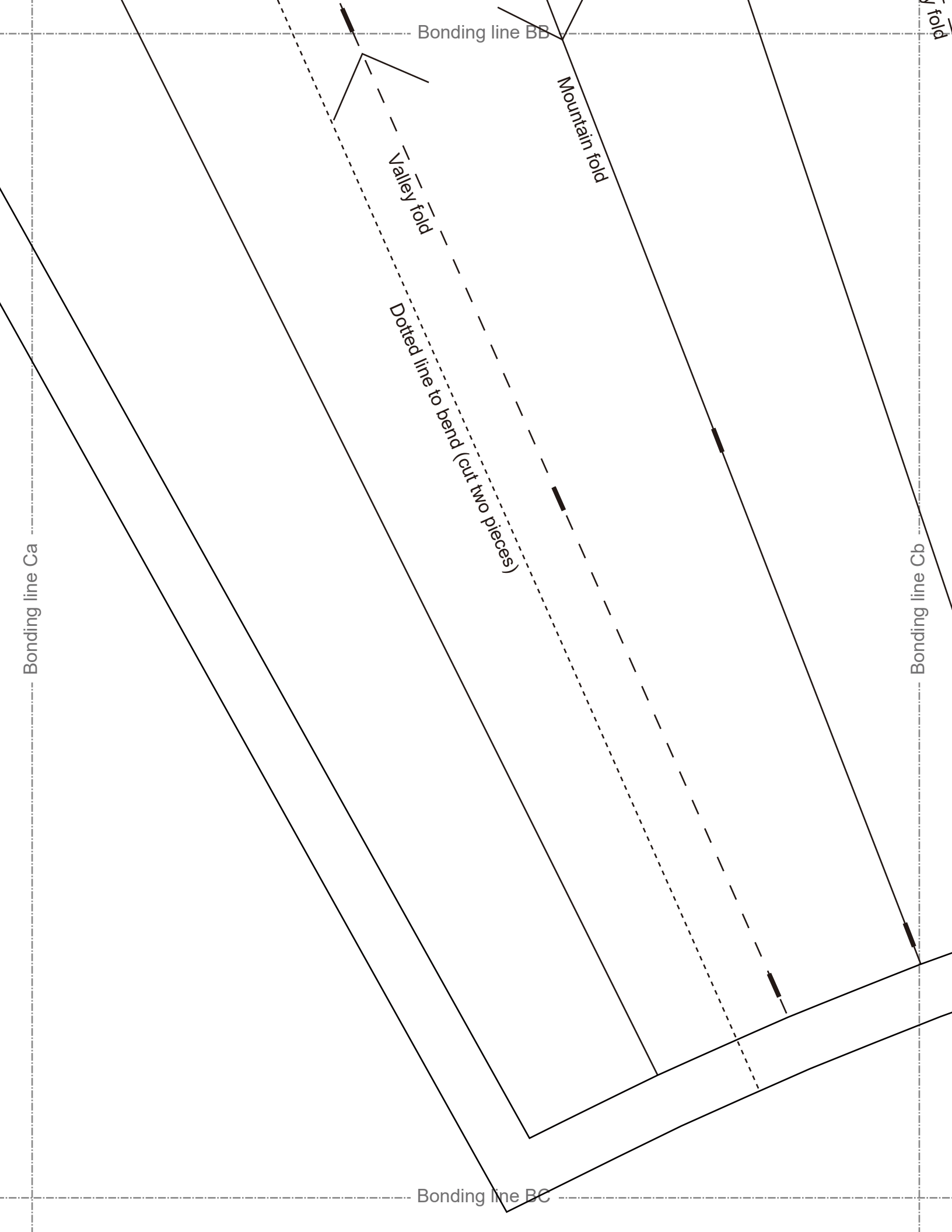
Bonding line Ab

Seam allowance 1/2"n.

Bonding line BA





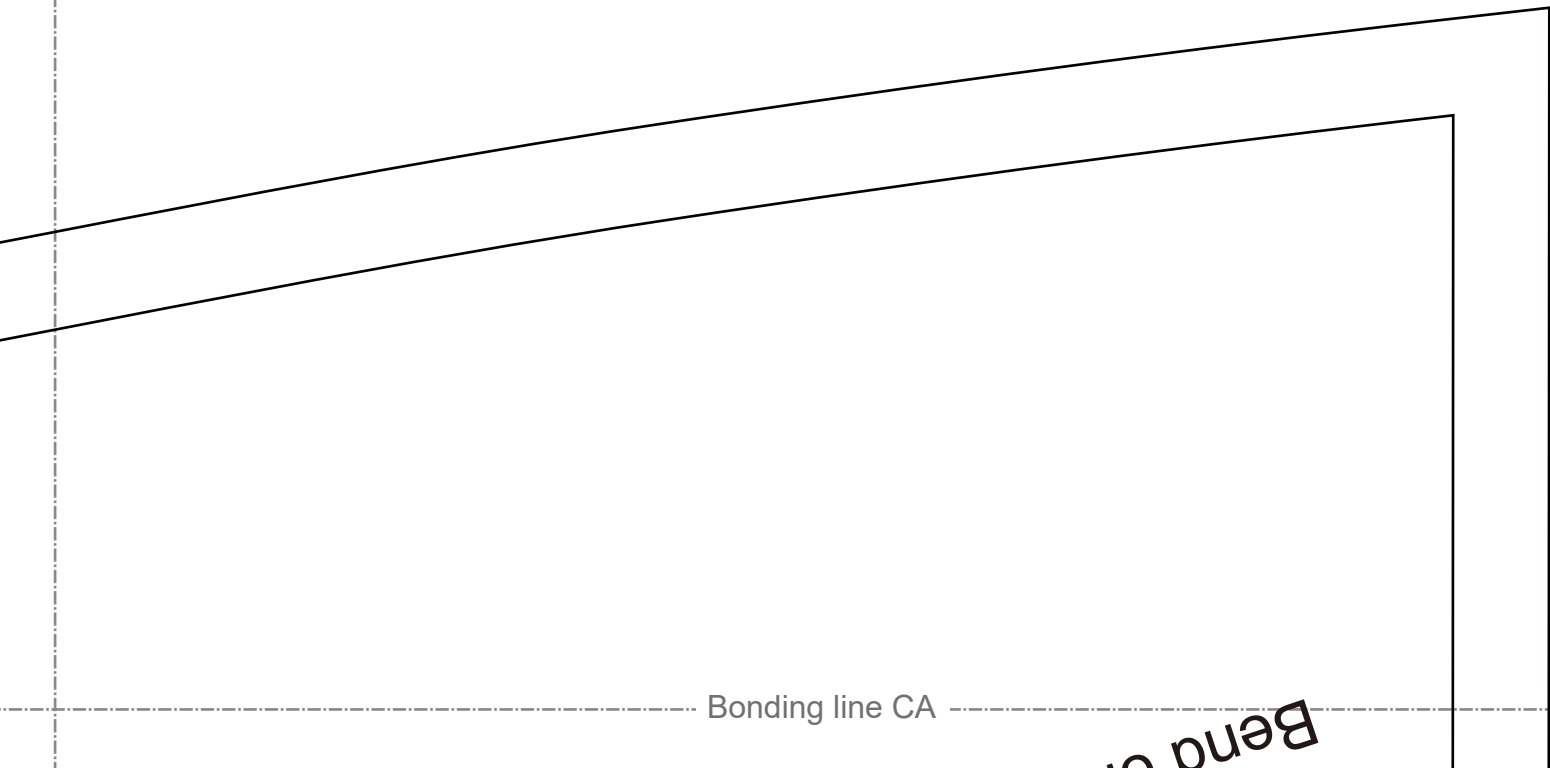


Bonding line Ab

Bonding line Ac

Bonding line CA

Bonding line CA



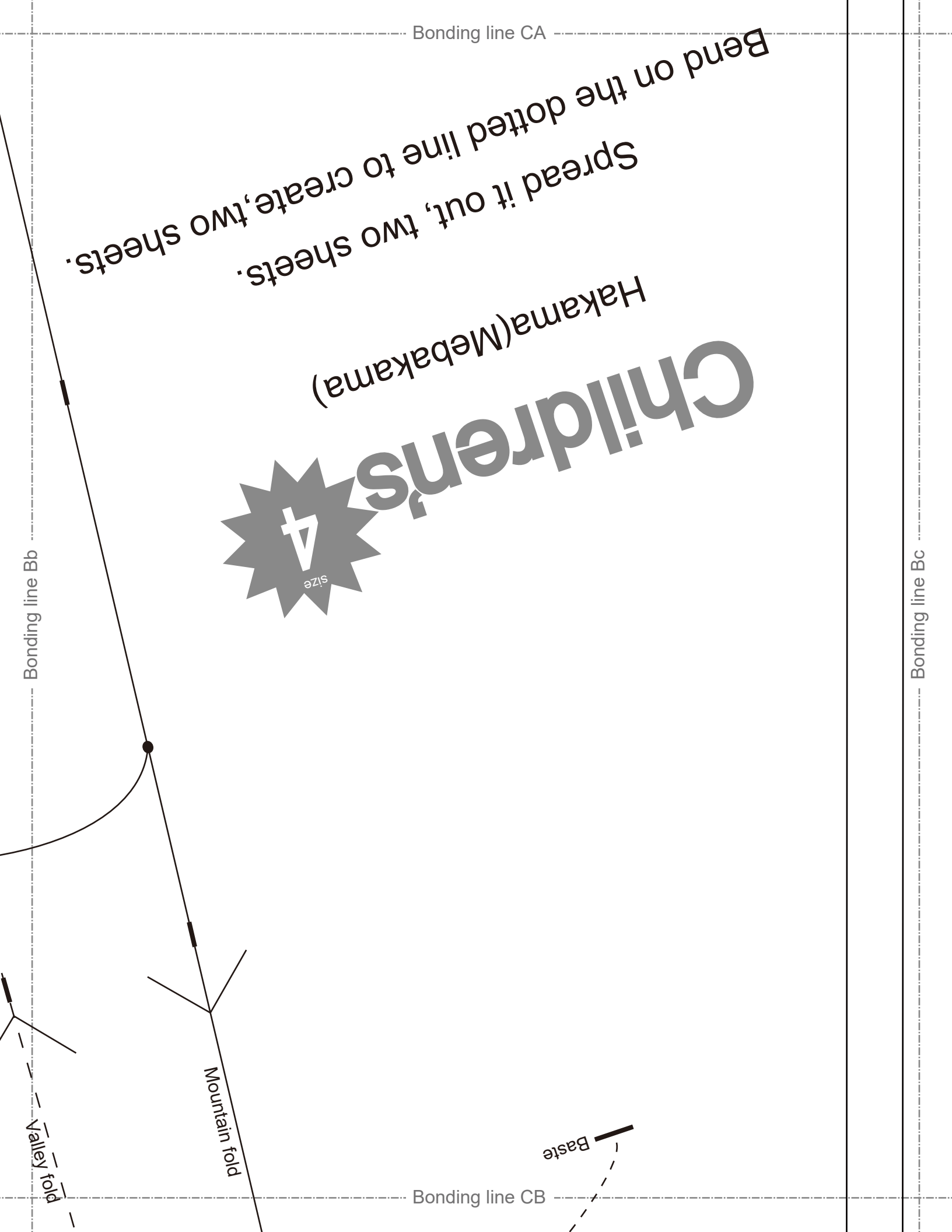
Bonding line CA

Bend on the dotted line to create, two sheets.  
Spread it out, two sheets.

Hakama (Mebakama)



Bonding line Bb



Bonding line Bc

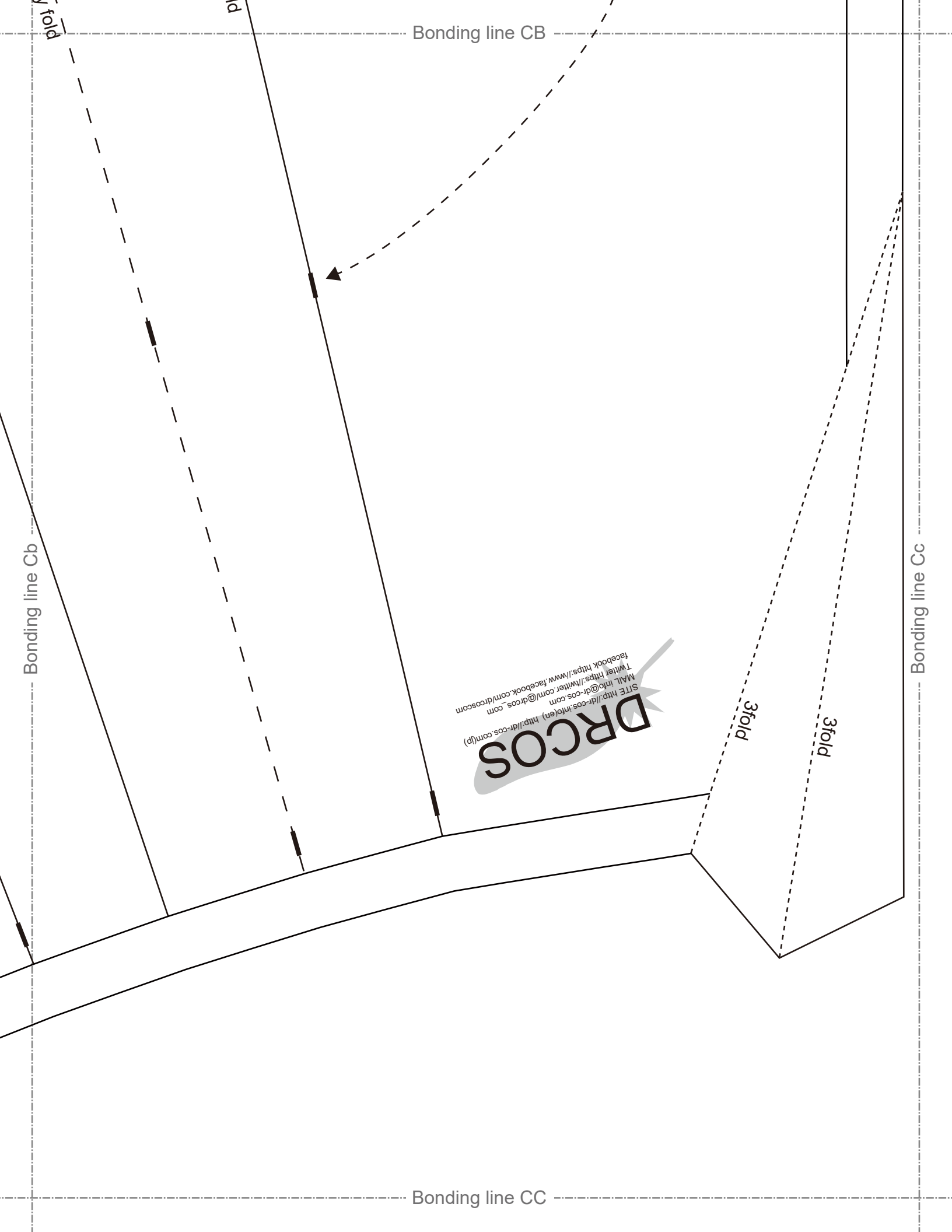
Mountain fold

Valley fold

Baste

Bonding line CB





Bonding line CB

Bonding line Cb

Bonding line Cc

Bonding line CC

**DRCOS**  
SITE [http://dr-cos.info\(en\)](http://dr-cos.info(en)) [http://dr-cos.com\(fr\)](http://dr-cos.com(fr))  
MAIL [info@dr-cos.com](mailto:info@dr-cos.com)  
Twitter <https://twitter.com/dr-cos.com>  
Facebook <https://www.facebook.com/dr-cos.com>

3fold

3fold