

The logo for DRCOS, featuring the letters 'DRCOS' in a bold, sans-serif font. To the left of the text is a stylized graphic of a bird or a wing, composed of several overlapping, curved shapes in shades of gray.

DRCOS

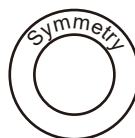
SITE <https://dr-cos.info/en> <https://dr-cos.com/jp>
MAIL info@dr-cos.com
Twitter [@drcos_com](https://twitter.com/@drcos_com)
pinterest <https://www.pinterest.jp/drcosinfo>

Bonding line Aa

Bonding line AA

Bonding line AA

LADIES' size



Maido
Back Bodice
cut one



Bonding line Ba

Bonding line AB

Bonding line AB

Bonding line Ca

Seam allowance 1/2in.

Seam allowance 1/2in.

Bonding line AC

Bonding line AC



Maïdo
Front Bodice
cut two

Bonding line Da



Bonding line AD



Bonding line AD



Button
&
Buttonhole
Position



Facing line

Collar position

Bonding line AE

Baste



Bonding line Ea



Collar position

Bonding line AE

LADIES' size

Velcro

Velcro

Maido
Ribbon core
Interfacing
cut one

Grain Line

DRCOS

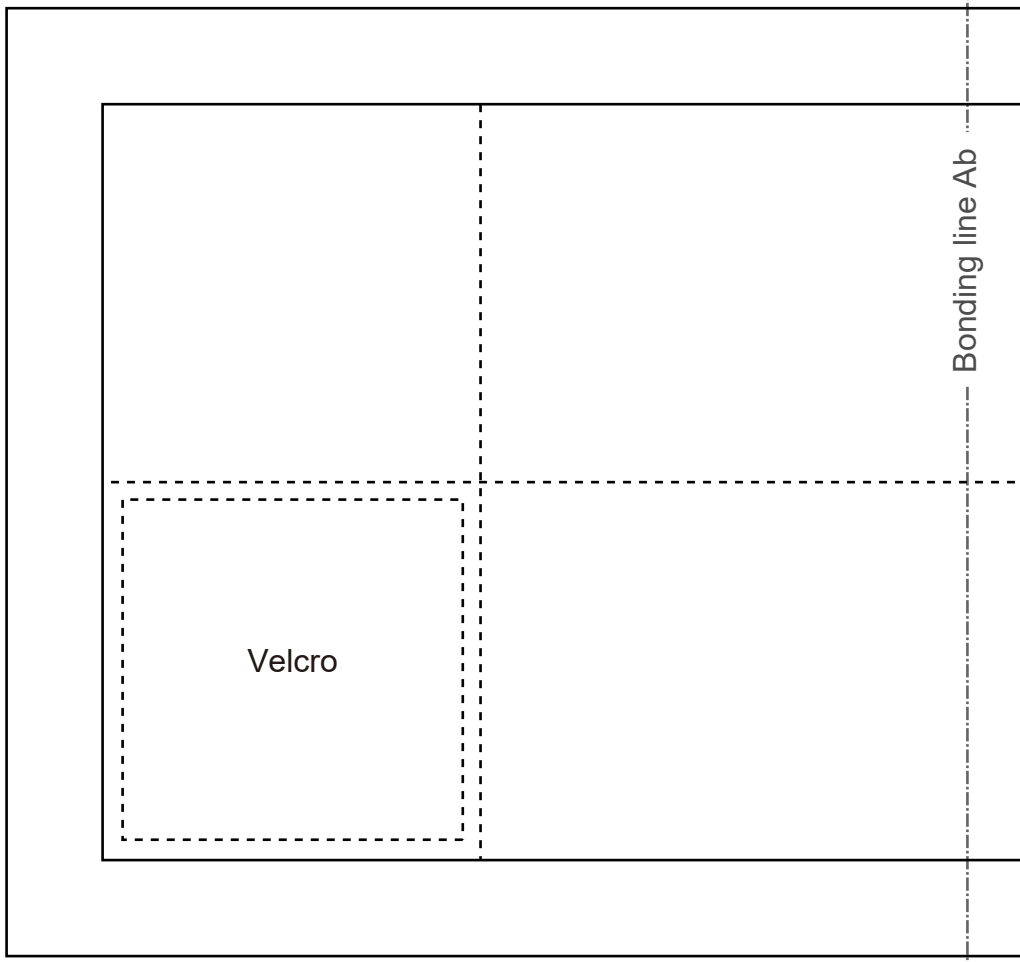
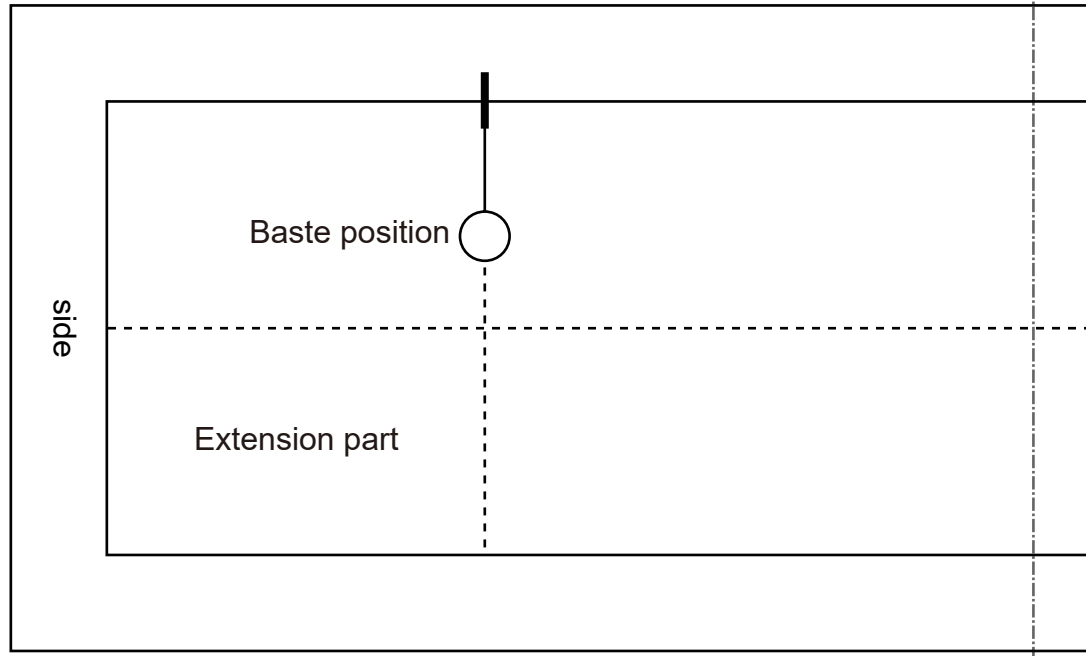
SITE [https://dr-cos.info\(en\)](https://dr-cos.info(en)) [https://dr-cos.com\(jp\)](https://dr-cos.com(jp))
MAIL info@dr-cos.com
Twitter [@drcos_com](https://twitter.com/@drcos_com)
Pinterest <https://www.pinterest.jp/drcosinfo>

Seam allowance 1/2in.

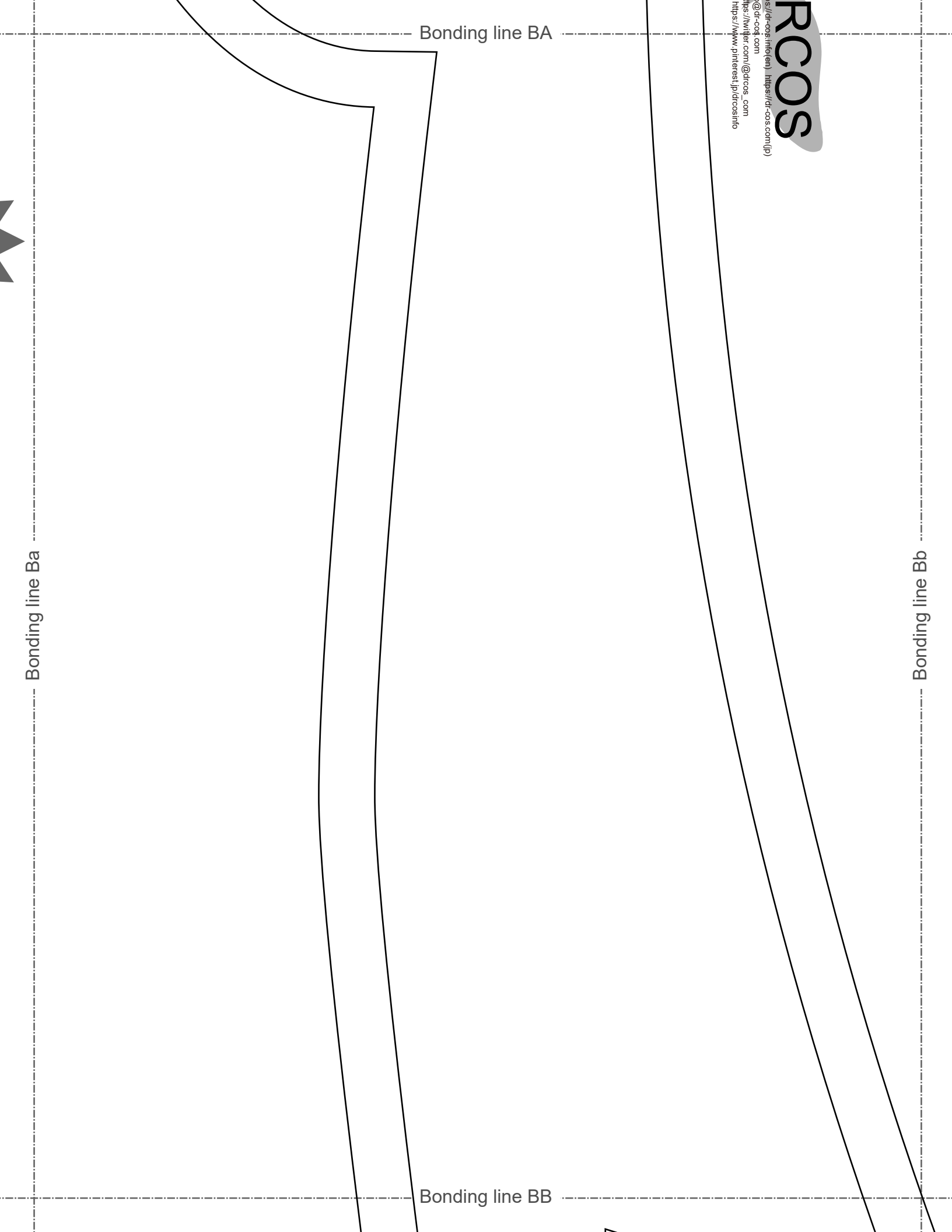
Bonding line Fa

Bonding line AF

Bonding line Aa



Bonding line BA



Bonding line Ba

Bonding line BA

Bonding line BB

Bonding line Bb

<https://dr-cos.com>
<https://www.pinterest.jp/dr-cos/info>
info@dr-cos.com
twiter.com/dr-cos.com

RCOS

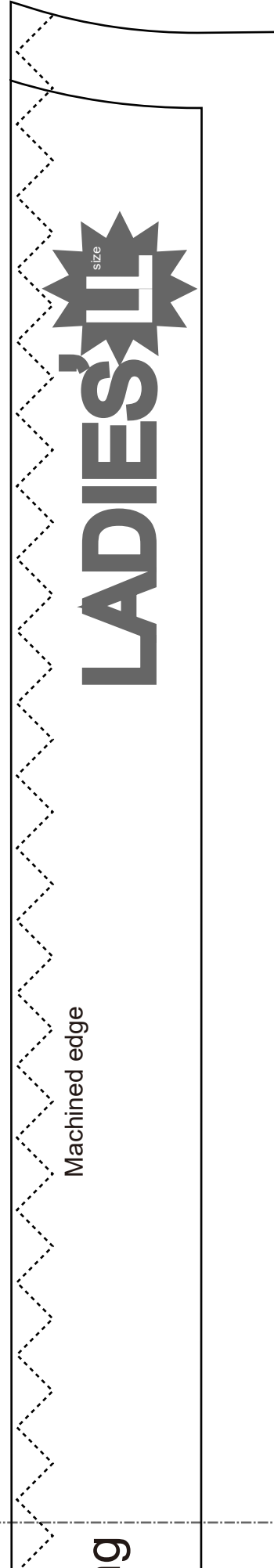
Bonding line Ca

Bonding line BB

Bonding line Cb

DRCOS
 SITE <https://dr-cos.info/en> [https://dr-cos.com\(jp\)](https://dr-cos.com(jp))
 MAIL info@dr-cos.com
 Twitter <https://twitter.com/dr-cos> <https://www.pinterest.jp/dr-cos/info>
 Pinterest <https://www.pinterest.jp/dr-cos/info>

Bonding line BC



LADIES' IT
 size

9

Bonding line Da

Bonding line BC

Bonding line BD

Bonding line Db

Maido
Facing
cut two

Interfacing
cut two

Seam allowance 1/2in.

Grain Line



Bonding line Ea

Bonding line BD

Dart

DRCOS

SITE <https://drcos.info/en> <https://drcos.com/jp>
MAIL info@drcos.com
Twitter https://twitter.com/drcos_com
pinterest <https://www.pinterest.jp/drcosinfo>

Front

Bonding line Eb

Bonding line BE

Bonding line BE

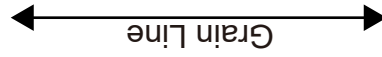
Bonding line Fa

Bonding line Fb

Bonding line BF

LADIES' size

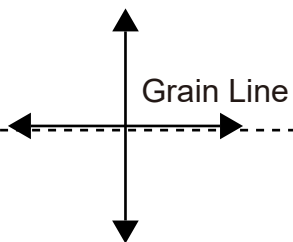
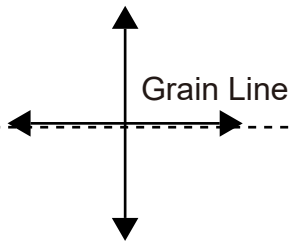
Maido
Apron
lining
cut one



Bonding line Ab

Bonding line Ac

Bonding line CA



Bonding line CA

Bonding line Bb

Bonding line Bc

Bonding line CB

Bonding line CB

Bonding line Cb

Bonding line Cc

DRCOS
SITE <https://drcos.info/en>, <https://drcos.com/jp>
MAIL info@drcos.com
TWITTER https://twitter.com/drcos_com
PINTEREST <https://www.pinterest.jp/drcosinfo>

Bonding line CC

Seam allowance 1

Bonding line Db

LADIES' ^{size} SUE

Grain Line

Maido
Cuff
Interfacing
cut two

Seam allowance 1/2in.

Bonding line CC

Seam allowance 1in.

LADIES' ^{size} SUE

Grain Line

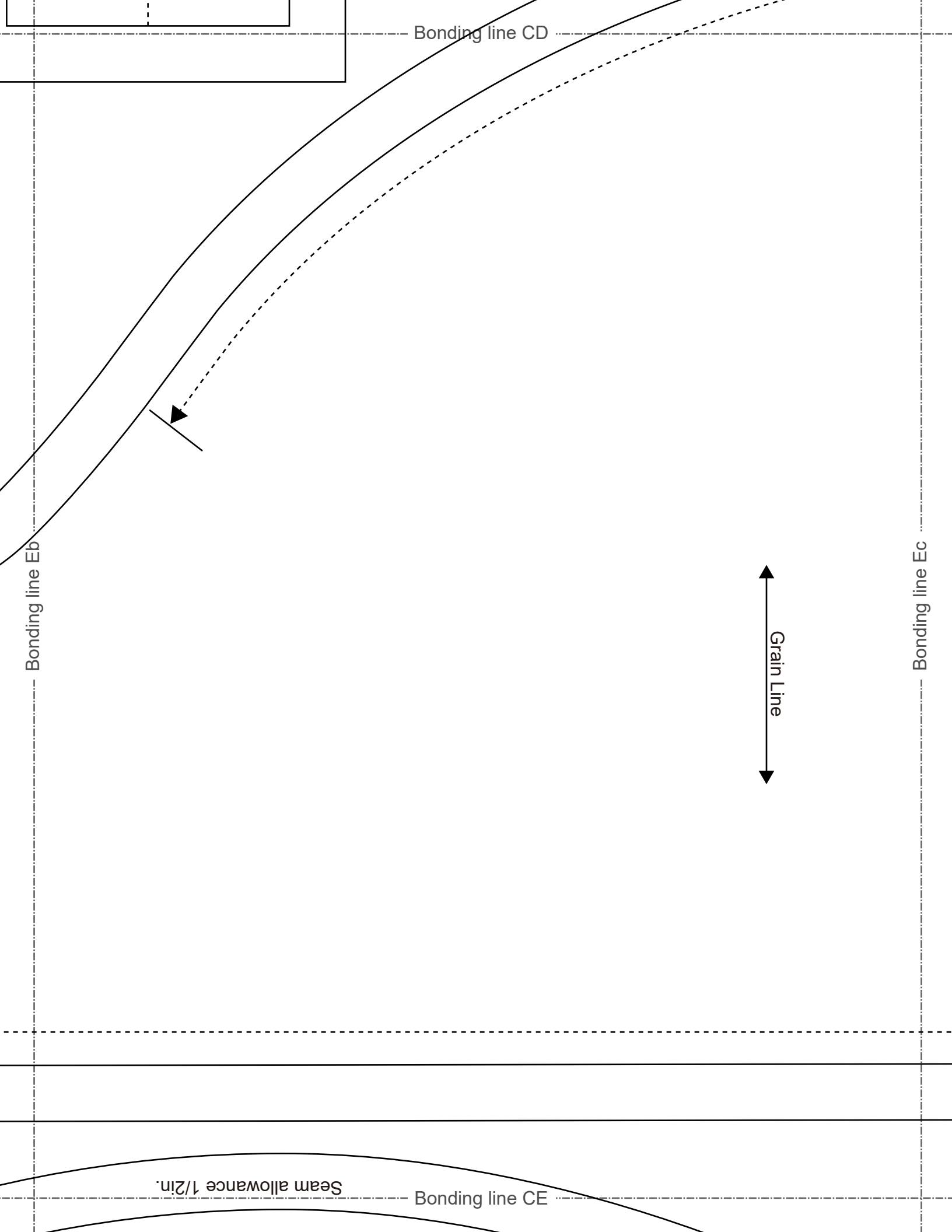
DRCOS

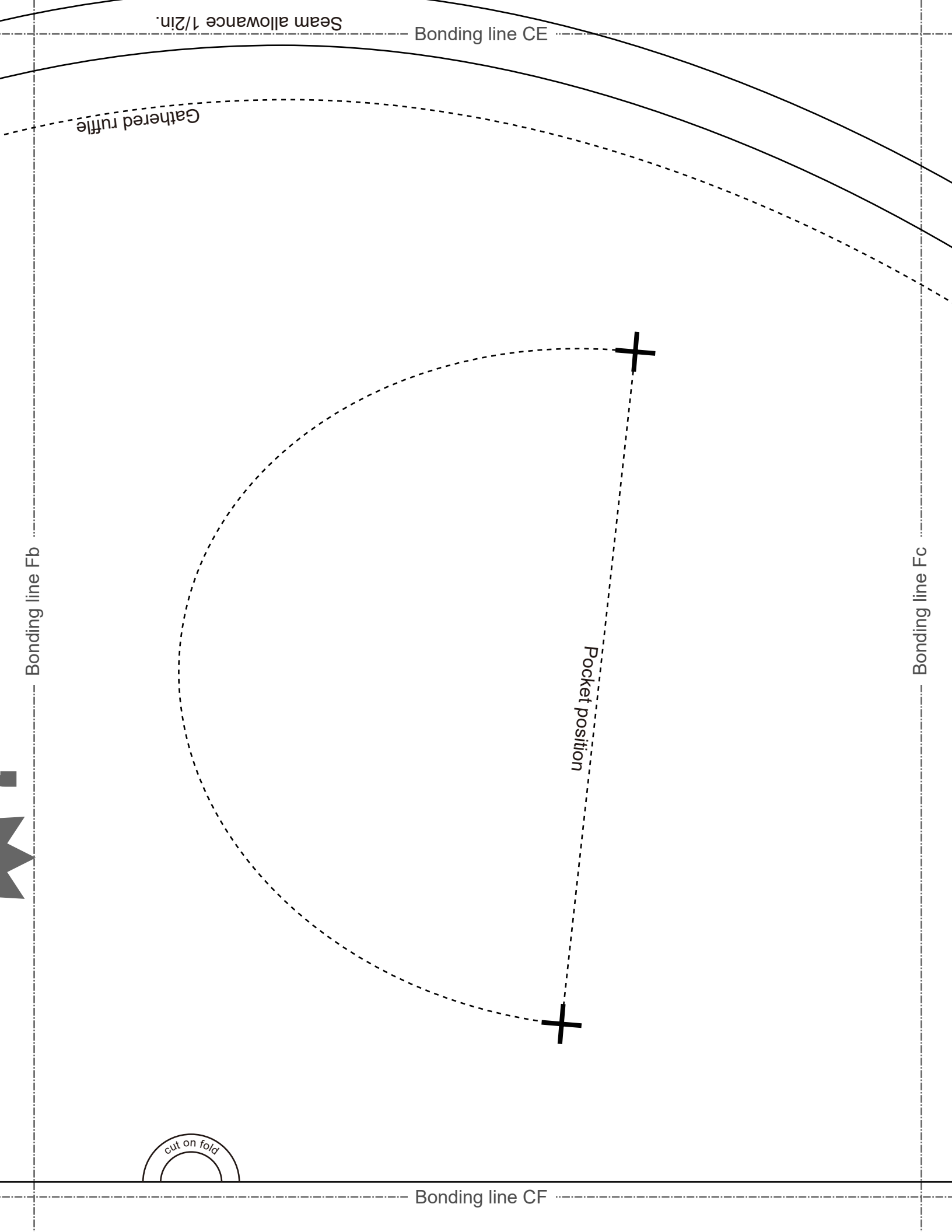
SITE <https://dr-cos.info/en> <https://dr-cos.com/jp>
MAIL info@dr-cos.com
Twitter https://twitter.com/drcoos_com
Pinterest <https://www.pinterest.jp/drcoosinfo>

Bonding line Dc

Bonding line CD

allowance 1/2in.





Seam allowance 1/2in.

Bonding line CE

Gathered ruffle

Bonding line Fb

Bonding line Fc

Pocket position

cut on fold

Bonding line CF

LADIES'  size

Seam allowance 1/2in.

Bonding line Ac

Bonding line Ad

LADIES'  size

Center Match mark



Seam allowance 1/2in.



Bonding line DA

Bonding line DA

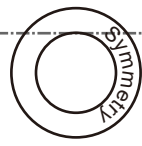
Bonding line Bc

Bonding line Bd

Bonding line DB



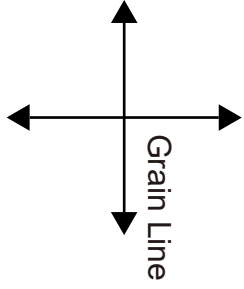
LADIES' ^{size} SKIRT



Maido
Bodice
cut two

Bonding line DB

Bonding line Cd



Bonding line DC

Bonding line Cc

Bonding line DC

https://www.pinterest.com/curious_couti/
<https://www.pinterest.jp/drcosinfo>

Bonding line Dc

Seam allowance 1/2in.

Bonding line Dd

Gather

Bonding line DD

Bonding line DD

LADIES' LL size

Maido
Sleeve
cut two

Gather

Seam allowance 1/2in.

Bonding line DE

Bonding line Ec

Bonding line Ed

Bonding line Fc

Bonding line DE

www.schneiders.com
www.drcos.com
 Twitter <https://twitter.com/drcos>
 Pinterest <https://www.pinterest.jp/drcosinfo>

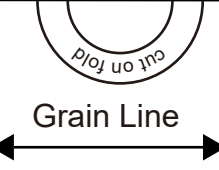
DRCOS

SITE <https://dr-cos.info/>
 MAIL info@dr-cos.com
 Twitter <https://twitter.com/drcos>
 Pinterest <https://www.pinterest.jp/drcosinfo>

Body side

DRCOS

SITE <https://dr-cos.info/>
 MAIL info@dr-cos.com
 Twitter <https://twitter.com/drcos>
 Pinterest <https://www.pinterest.jp/drcosinfo>



Maido
Collar
 cut two
Interfacing
 cut one

LADIES'SIT

size

Gathered ruffle

Seam allowance 1/2in.

Bonding line DF

Bonding line Fd

Maido
Waist band
Interfacing
cut one

Center

Maido
Apron waist band
Interfacing
cut one

Bonding line Ad

Bonding line Ae

Bonding line EA

Bonding line EA

Bonding line Bd

Bonding line Be

Bonding line EB



Bonding line Cd

Bonding line EB

Bonding line Ce

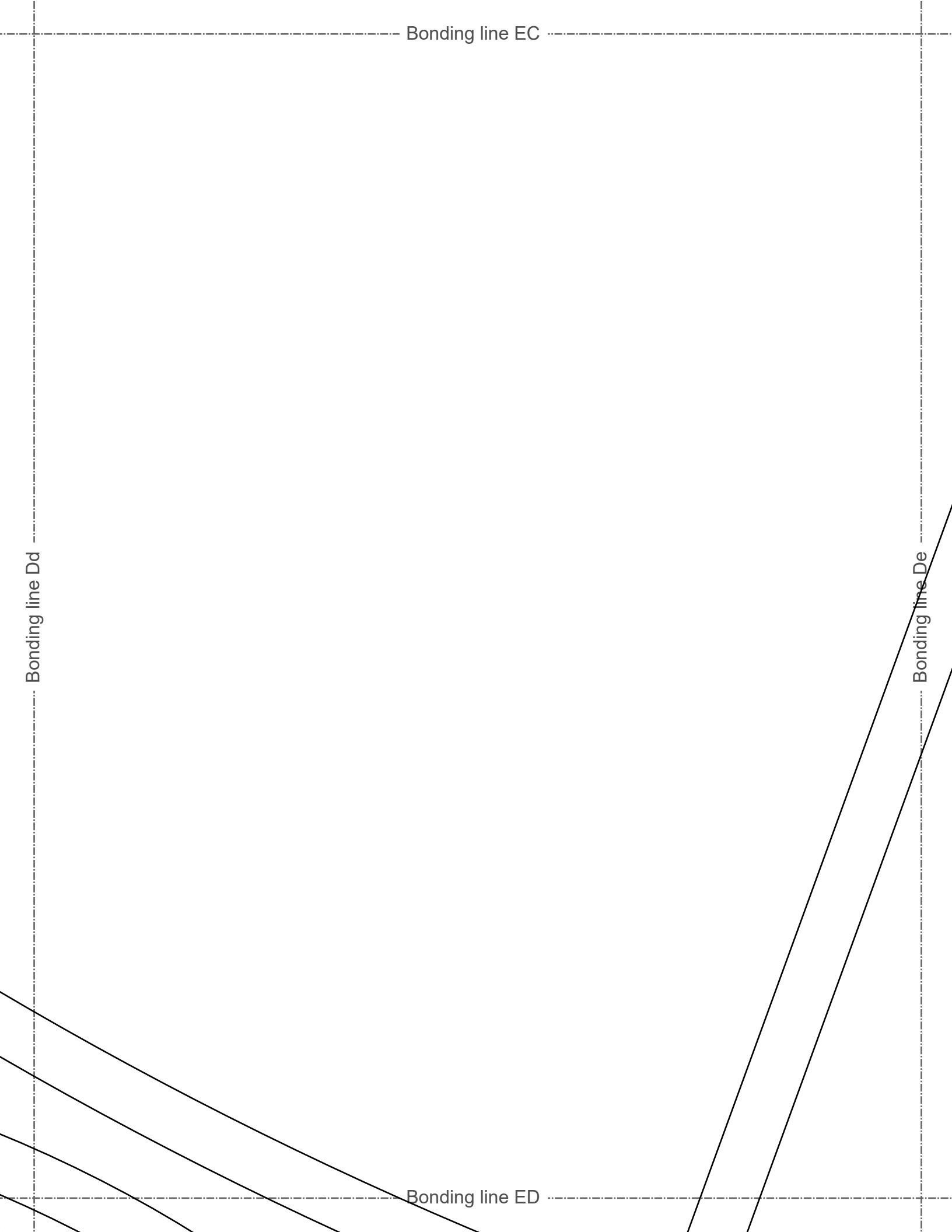
Bonding line EC

Bonding line EC

Bonding line Dd

Bonding line De

Bonding line ED



Bonding line ED

Bonding line Ed

Bonding line Ee

Back

DRCOS

SITE [https://dr-cos.info\(en\)](https://dr-cos.info(en)) [https://dr-cos.com\(jp\)](https://dr-cos.com(jp))

MAIL info@dr-cos.com

Twitter [@drcos_com](https://twitter.com/@drcos_com)

pinterest <https://www.pinterest.jp/drcosinfo>

Bonding line EE

DRCOS

SITE [https://dr-cos.info\(en\)](https://dr-cos.info(en)) [https://dr-cos.com\(jp\)](https://dr-cos.com(jp))
MAIL info@dr-cos.com
Twitter https://twitter.com/@drcos_com
pinterest <https://www.pinterest.jp/drcosinfo>

side

Center line

Bonding line Ae

Velcro

Bonding line Af

DRCOS

SITE [https://dr-cos.info\(en\)](https://dr-cos.info(en)) [https://dr-cos.com\(jp\)](https://dr-cos.com(jp))
MAIL info@dr-cos.com
Twitter https://twitter.com/@drcos_com
pinterest <https://www.pinterest.jp/drcosinfo>

Bonding line FA

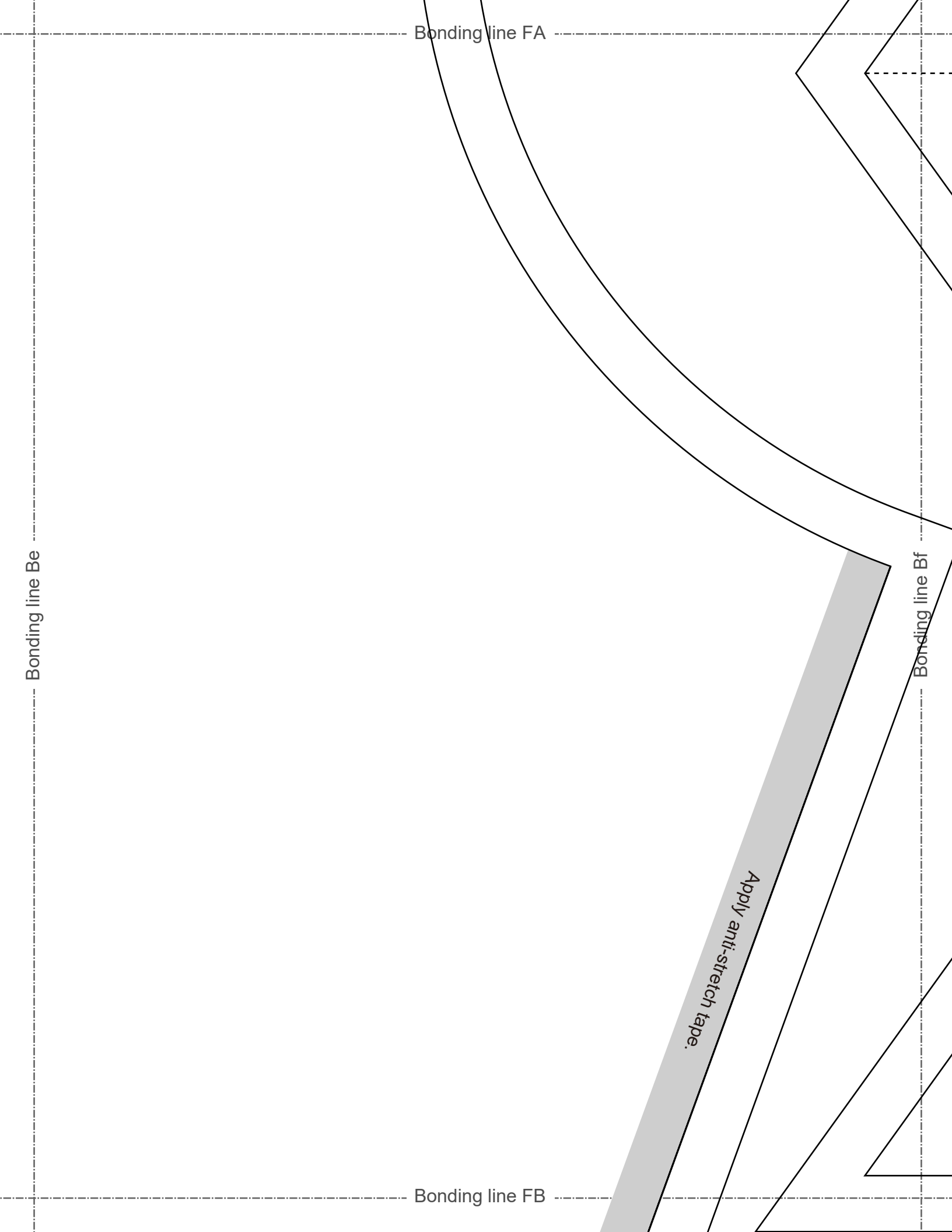
Bonding line Be

Bonding line FA

Bonding line Bf

Bonding line FB

Apply anti-stretch tape.



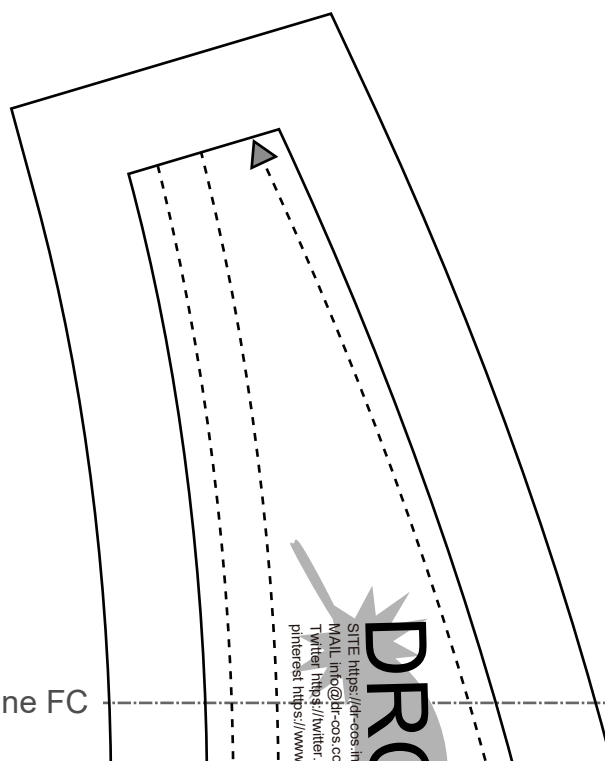
Bonding line Ce

Bonding line FB

End of sewing

Bonding line Cf

Bonding line FC

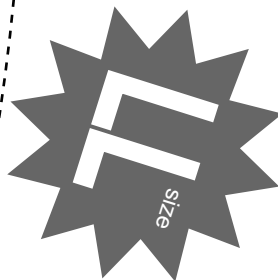


SITE <https://dl-cos.in>
MAIL info@dl-cos.co
Twitter <https://twitter.com/dl-cos>
Pinterest <https://www.pinterest.com/dl-cos>

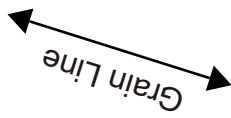
DRO

Bonding line FC

DRCCOS
E <https://dr-cos.info/en/> <https://dr-cos.com/jp/>
L info@dr-cos.com
T <https://twitter.com/drccos>
P <https://www.pinterest.jp/drccosinfo>



Maido
Headdress
cut two
Interfacing
cut one

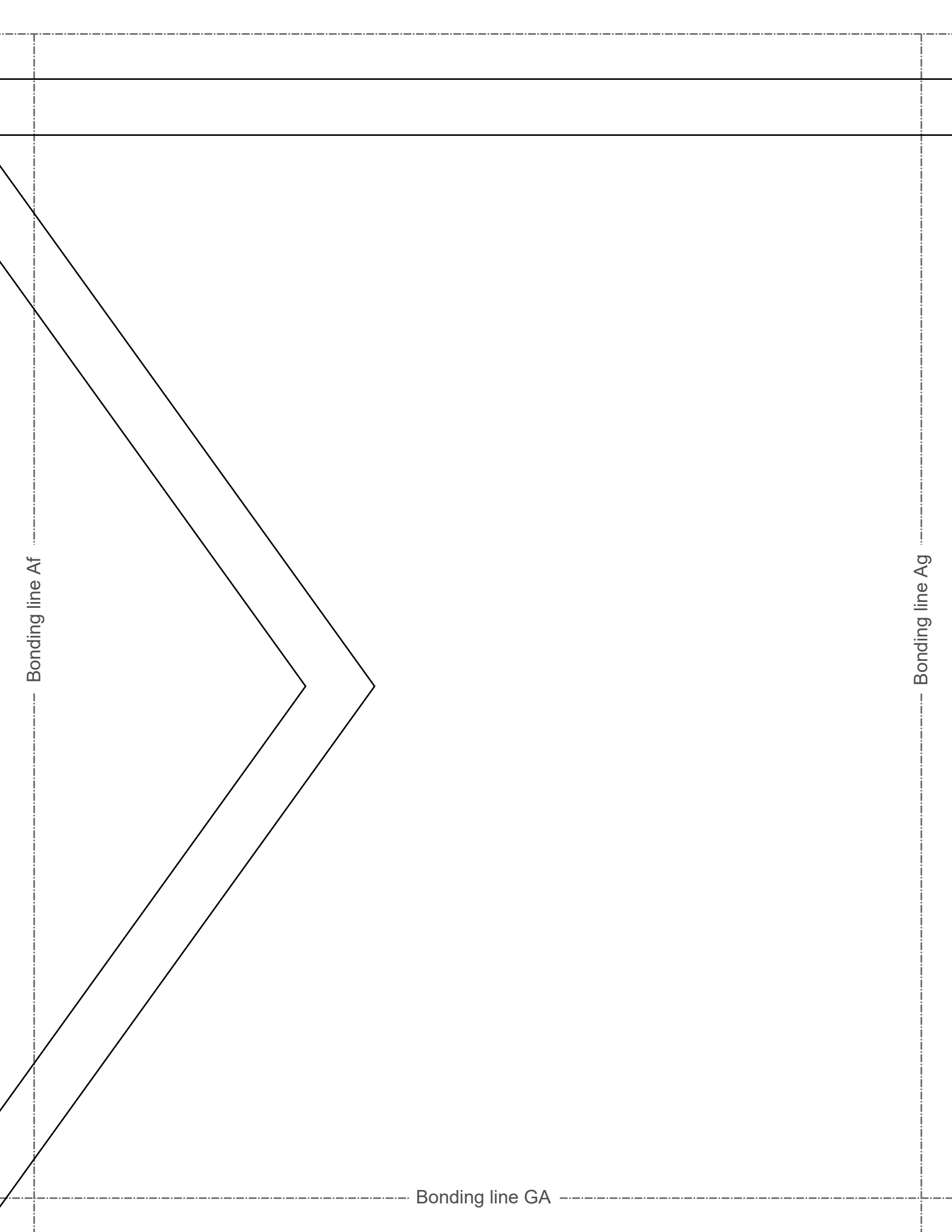


Seam allowance 1/2in.

Bonding line De

Bonding line Df

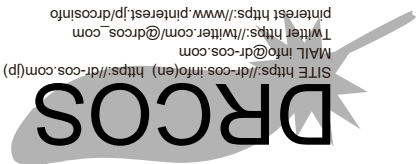
Bonding line FD



Bonding line GA

Bonding line Bf

Bonding line Bg



DRCOS
SITE <https://drcos.info/en> <https://drcos.com/jp>
MAIL info@drcos.com
Twitter https://twitter.com/drcos_com
Pinterest <https://www.pinterest.jp/drcosinfo>

Bonding line GB

Bonding line GB

Bonding line Cf

Bonding line Cg

Bonding line GC



Bonding line GC

cut
top
fold

Bonding line Df

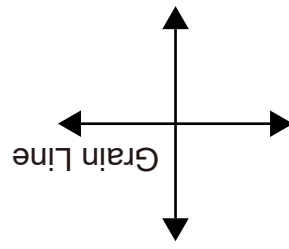
Bonding line Dg

Bonding line GD

Seam allowance 1/2in.

Bonding line Ag

Bonding line Ah



Bonding line HA

LADIES' **IT** size

Maido
Ribbon(lower part)
cut one

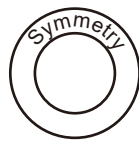


Bonding line HB

Bonding line Cg

Bonding line Ch

LADIES'  LL size



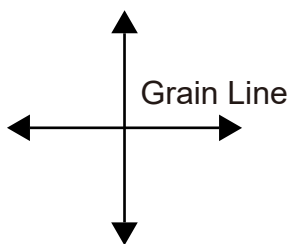
Maido
Ribbon(top part)
Interfacing
cut one

Bonding line HC

Bonding line HC

Bonding line Dg

Bonding line Dh



Seam allowance 1/2in.

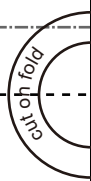
Bonding line HD

Bonding line Ah

Bonding line IA

folie

Bonding line IA



Bonding line Bh

Bonding line IB

Bonding line IB

DRCOS

SITE [https://dr-cos.info\(en\)](https://dr-cos.info(en)) [https://dr-cos.com\(jp\)](https://dr-cos.com(jp))
MAIL info@dr-cos.com
Twitter https://twitter.com/@drcos_com
pinterest <https://www.pinterest.jp/drcosinfo>

Bonding line Ch

Bonding line IC

Bonding line IC

Bonding line Dh

Bonding line ID