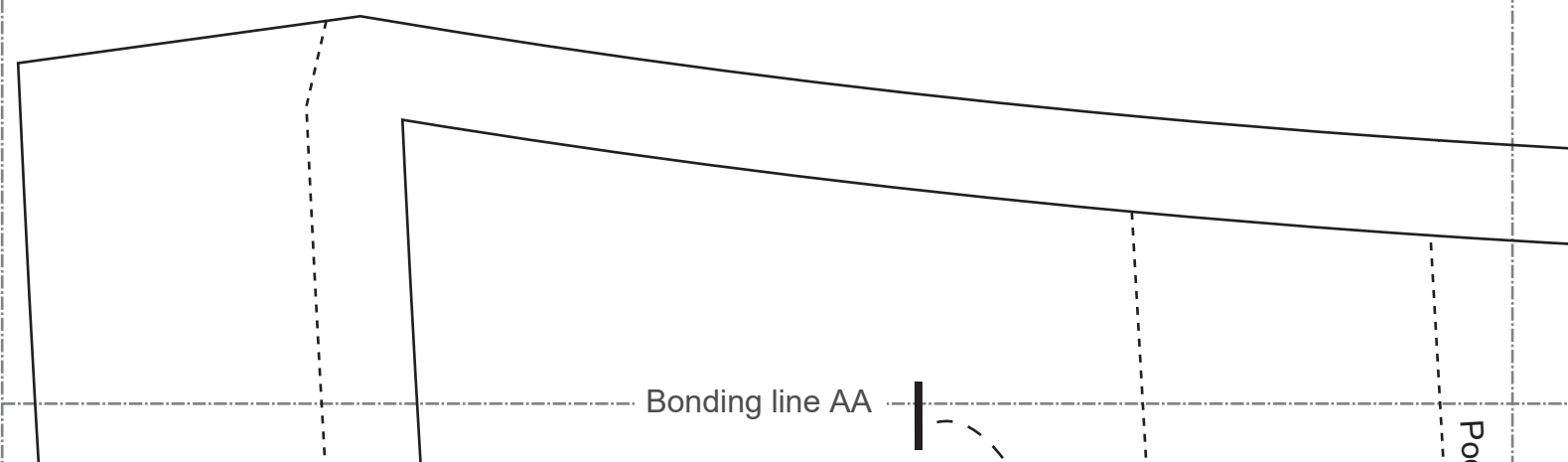


How to make buttonholes.
Please refer to this page
<https://www.dr-cos.info/kt->



Bonding line AA

Po

Pocket position



Bonding line Ba

Baste

Bonding line AA

Jacket Front body side cut two Lining cut two

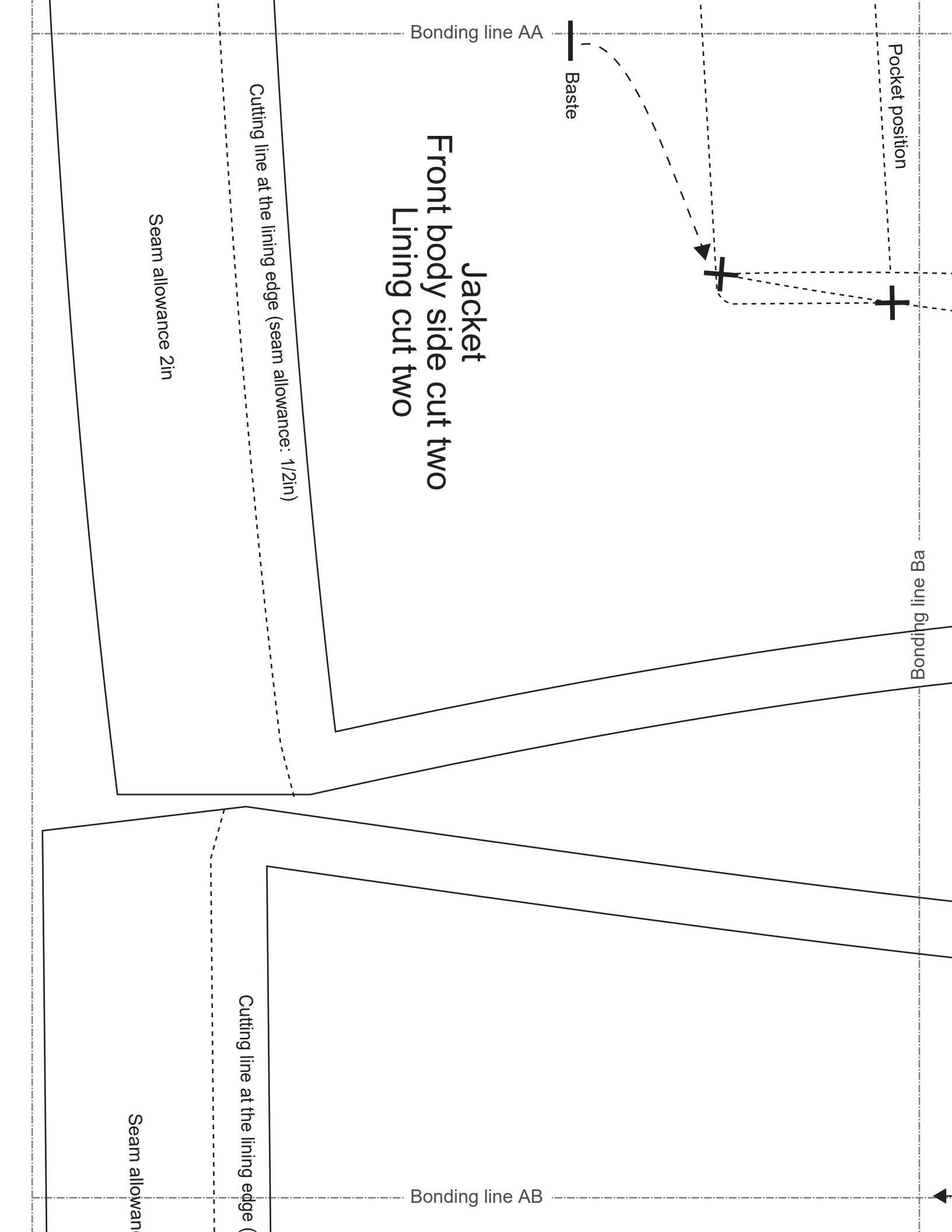
Cutting line at the lining edge (seam allowance: 1/2in)

Seam allowance 2in

Bonding line AB

Cutting line at the lining edge (

Seam allowan



Bonding line Ca

Bonding line AB

DRCOS
SITE <https://dr-cos.info/en>, <https://dr-cos.com/jp>
MAIL info@dr-cos.com
TWITTER https://twitter.com/dr-cos_com
PINTEREST <https://www.pinterest.jp/drcosinfo>

g edge (seam allowance: 1/2in)

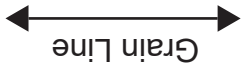
allowance 2in

Cutting line at the lining edge (seam allowance: 1/2in)

Seam allowance 2in

Bonding line AC

Seam allowance 1/2in



Center line



onholes.
s page
s.info/kt-buttonhole.html

How to sew on buttons.
Please refer to this page
<https://www.dr-cos.info/kt-button.html>



Bonding line Aa

Bonding line Ab



Pocke



How to Serge/overlock (sewing machine & overlock sewing machine).
Please refer to this page
<https://www.dr-cos.info/kt-serge.html>

Seam allowance 1/2in

Bonding line BA

Pod

Bonding line BA

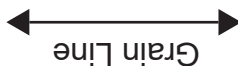
Pocket position



How to sew darts.
Please refer to this page
<https://www.dr-cos.info/kt-darts.html>



darts

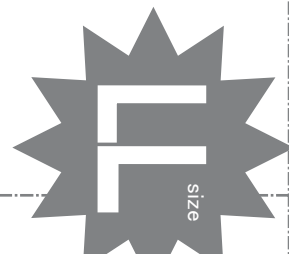


Bonding line Ba

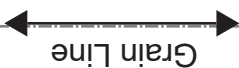
Bonding line Bb

Seam allowance 1/2in

Bonding line BB



Jacket
Back body :
cut two
Lining
cut two



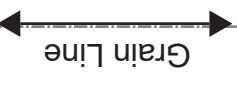
Grain Line



size

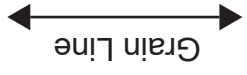
ocket
ody side
two
ning
two

Bonding line AB



Seam allowance 1/2in

Bonding line Ca



Bonding line Cb

Cut two
Grain

Bonding line BC

Label

Jacket
Front body
cut two

Button & buttonhole position



Bonding line Ab

Bonding line Ac



Bonding line CA

Bonding line CA

DRCOS
SITE <https://dr-cos.info/en> <https://dr-cos.com/jp>
MAIL info@dr-cos.com
Twitter <https://twitter.com/dr-cos>
Pinterest <https://www.pinterest.jp/dr-cos/info>

Bonding line Bb

Jacket
front body side interfacing
cut two

DRCOS
SITE <https://dr-cos.info/en> <https://dr-cos.com/jp>
MAIL info@dr-cos.com
Twitter <https://twitter.com/dr-cos>
Pinterest <https://www.pinterest.jp/dr-cos/info>

Bonding line Bc



Bonding line CB

Bonding line CB

Bonding line Cb

Jacket
Back body
cut two
Lining
cut two



Bonding line Cc

Bonding line CC

Bonding line Ac

Collar attachment position

SITE <https://dr-cos.info/en>, <https://dr-cos.com/jp>
MAIL info@dr-cos.com
Twitter <https://twitter.com/dr-cos.com>
Pinterest <https://www.pinterest.jp/dr-cos/info>

DRCOS

Bonding line DA

Bonding line Ad

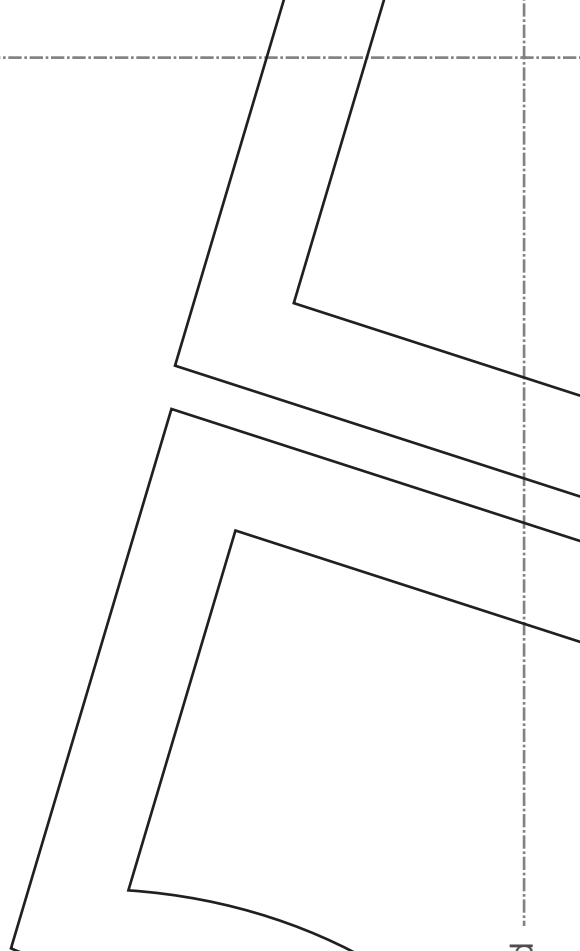
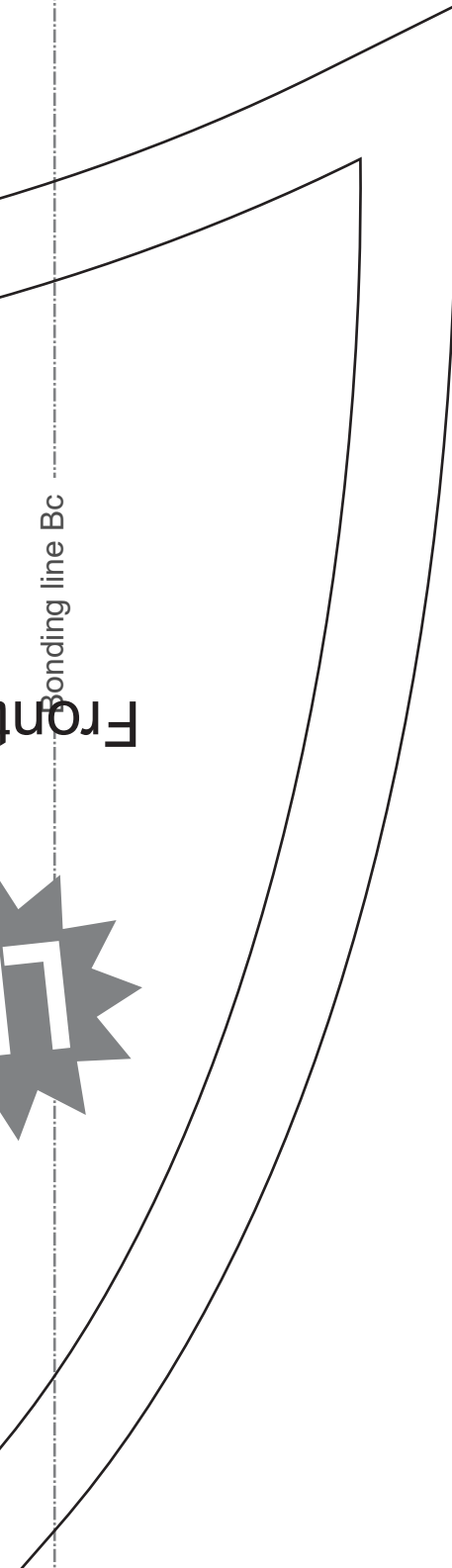
DR-COS
info@dr-cos.com
www.dr-cos.com

Bonding line DA

Bonding line Bd

Bonding line Bc

Front



Bonding line Cc



SITE <https://dr-cos.info/>(en) <https://dr-cos.com/jp/>
MAIL info@dr-cos.com
Twitter [@drcos_com](https://twitter.com/@drcos_com)
Pinterest <https://www.pinterest.jp/drcosinfo>

Bonding line DC

Bonding line Cd

Bonding line DC

Bonding line Dc

Bonding line Dd

Bonding line DD



Bonding line Ad

Bonding line Ae

Please check here for the required fabric length images, cutting reference images, and the step-by-step sewing instructions. <https://dr-cos.info/fp-jacket.html>



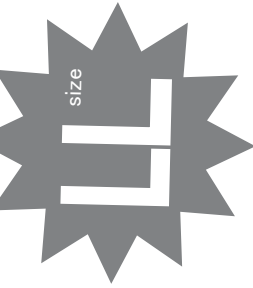
Bonding line EA

DRCOS
STTE <https://dr-cos.info/en> <https://dr-cos.com/fp>
MAIL info@dr-cos.com
Twitter <https://twitter.com/dr-cos>
Pinterest <https://www.pinterest.jp/dr-cos/info>

Bonding line EA

Bonding line Bd

Bonding line Be



Bonding line EB

Bonding line EB

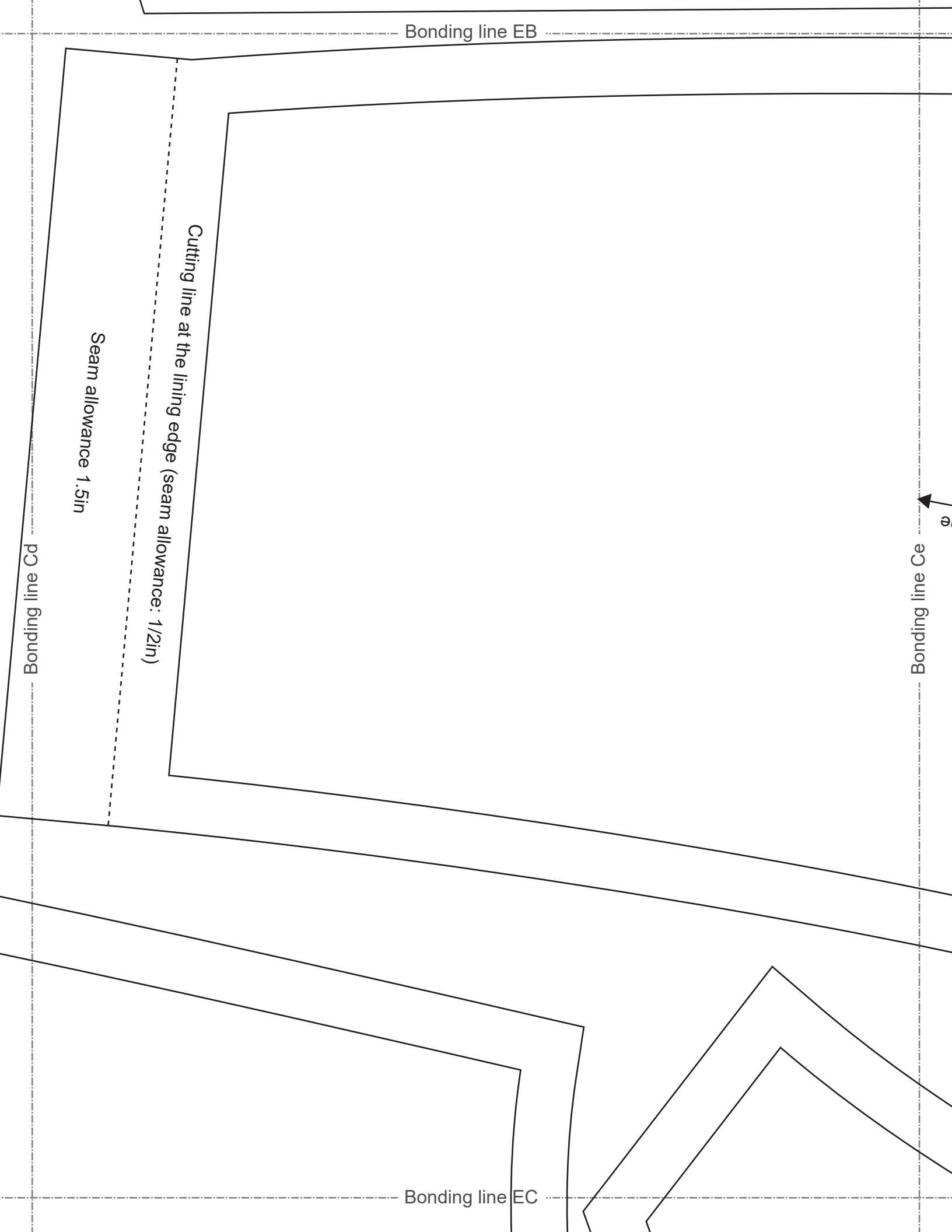
Cutting line at the lining edge (seam allowance: 1/2in)

Seam allowance 1.5in

Bonding line Cd

Bonding line Ce

Bonding line EC



Jacket
Back body side interfacing
cut two

Bonding line Dd

Bonding line EC

Bonding line De

Bonding line ED





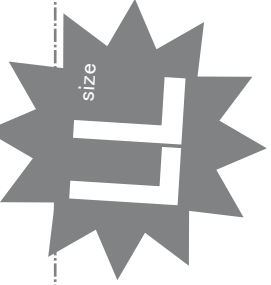
Jacket
Front body interfacing
cut two

Bonding line Ae

Bonding line Af

Bonding line FA

Bonding line FA

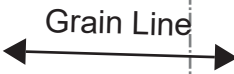


Jacket
Lining
cut two

Bonding line Be

Bonding line Bf

Jacket
Facing
cut two



Bonding line FB

Bonding line FB

Seam allowance 1/2in

Jacket
Outer sleeve cut two
Lining cut two

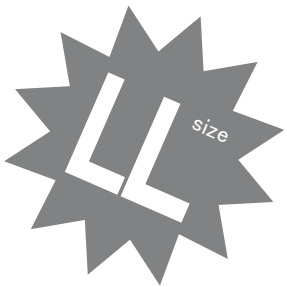
Bonding line Ce

Grain Line

Bonding line Cf

Bonding line FC

Bonding line FC



Jacket
Collar
cut two
Collar interfacing
cut one



Seam allowance 1/2in

Bonding line De

Bonding line Df

Bonding line FD

Bonding line Af

Bonding line Ag

Bonding line GA

SITE <https://dr-cos.info/en/> | <https://dr-cos.com/fr/>
MAIL info@dr-cos.com
TWITTER https://twitter.com/dr-cos_com
PINTEREST <https://www.pinterest.jp/dr-cosinfo>

DRCOS

Bonding line GA

01/15/2013
10:00
(d)1005-cos-jp/1/1/1

Grain Line

Bonding line Bf

Bonding line Bg

Line

DRCOS
SITE <https://drcos.info/en> <https://drcos.com/jp>
MAIL info@drcos.com
Twitter https://twitter.com/drcos_com
Pinterest <https://www.pinterest.jp/drcosinfo>

Seam allowance 1/2in

Bonding line GB

Bonding line GB

Bonding line Cf



DRCOS
 SITE <https://dr-cos.info/en> | <https://dr-cos.com/lp>
 MAIL info@dr-cos.com | <https://dr-cos.com>
 Twitter <https://twitter.com/dr-cos>
 Pinterest <https://www.pinterest.jp/dr-cos/info>

Bonding line Cg

Bonding line GC

Bonding line GC

Bonding line Df

DRCOS
SITE <https://dr-cos.info/en> <https://dr-cos.com/jp>
MAIL info@dr-cos.com
Twitter https://twitter.com/@drcos_com
Pinterest <https://www.pinterest.jp/drcosinfo>

DRCOS
SITE <https://dr-cos.info/en> <https://dr-cos.com/jp>
MAIL info@dr-cos.com
Twitter https://twitter.com/@drcos_com
Pinterest <https://www.pinterest.jp/drcosinfo>

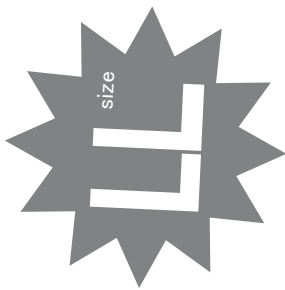
Bonding line Dg

Bonding line GD

Bonding line HC

Bonding line Dg

Bonding line Dh



Jacket
Inner sleeve cut two
Lining cut two


Seam allowance 1/2in

Bonding line HD

Bonding line IC

Bonding line Dh

Grain Line



Cutting line at the lining edge (seam allowance: 1/2in)

Seam allowance 1.5in

Bonding line ID