

Bonding line Aa

Pocket position



How to sew pockets.
Please refer to this page
<https://www.dr-cos.info/kt-pocket.html>



Bonding line AA



How to sew Facing and Hem.
Please refer to this page
<https://www.dr-cos.info/kt-facingandhem.html>

Bonding line AA

Hoodie2 Front Body two sheets



Bonding line Ba

Facing Line

Bonding line AB

Bonding line AB

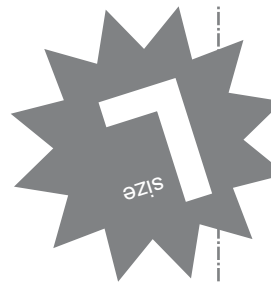
Site <https://dr-cos.info/en> <https://dr-cos.com/jp>
MAIL info@dr-cos.com
Twitter <https://twitter.com/dr-cos>
Pinterest <https://www.pinterest.jp/dr-cos/info>

DRCOS

Hoodie2
Pocket
two sheets

Grain Line

Bonding line Ca



Bonding line AC

Bonding line AC



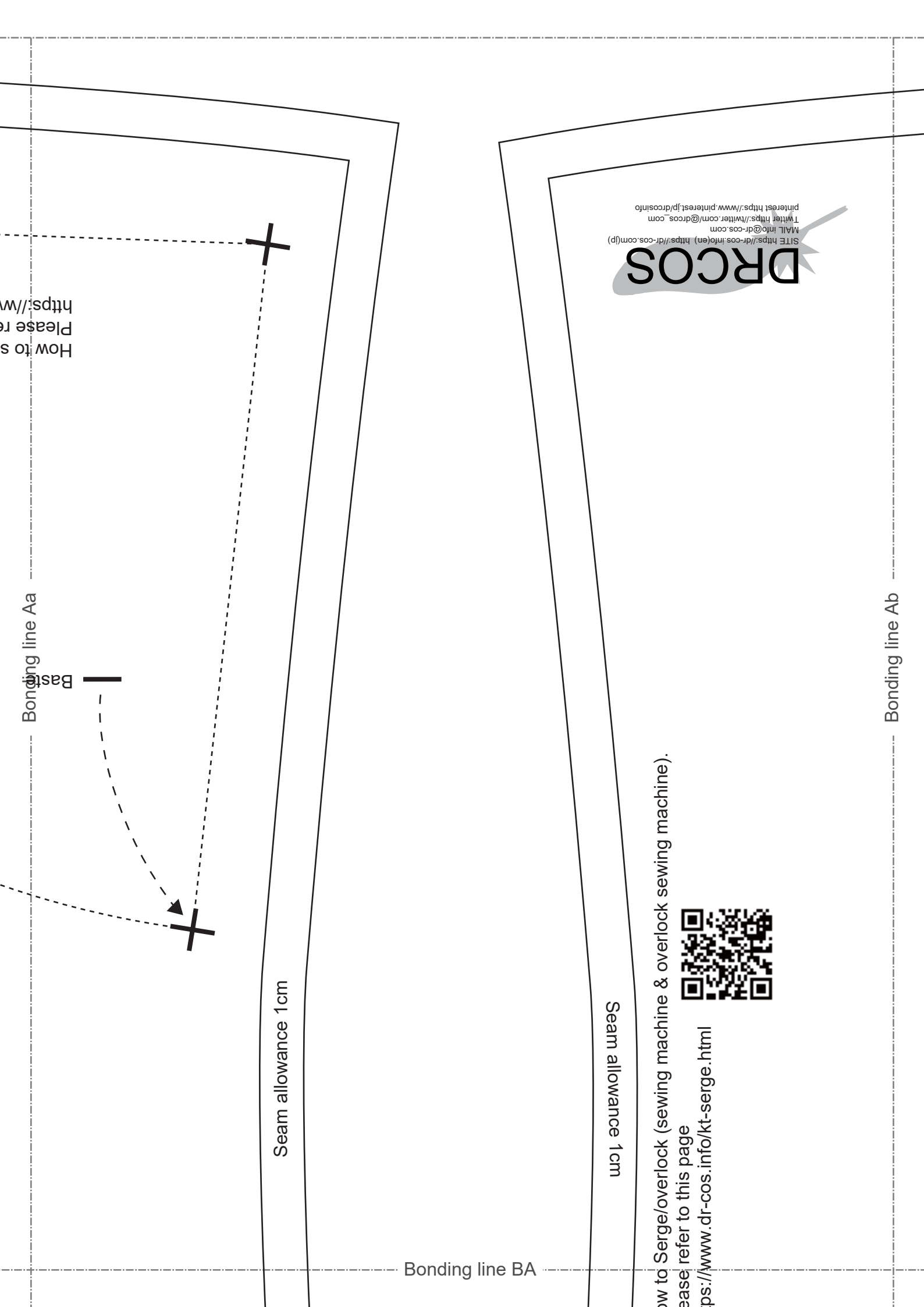
Hoodie2
Hood
two sheets



Bonding line Da

DRCOS
 SITE [https://dr-cos.info\(en\)](https://dr-cos.info(en)) [https://dr-cos.com\(jp\)](https://dr-cos.com(jp))
 MAIL info@dr-cos.com
 Twitter <https://twitter.com/dr-cos>
 Pinterest <https://www.pinterest.jp/drcosinfo>

Bonding line AD



Bonding line Aa

How to serge
Please refer to
<https://www.dr-cos.info/kt-serge.html>

Bas



Seam allowance 1 cm

Bonding line BA

Seam allowance 1 cm

How to Serge/overlock (sewing machine & overlock sewing machine).
Please refer to this page
<https://www.dr-cos.info/kt-serge.html>



DRCOS
SITE <https://dr-cos.info/en> <https://dr-cos.com/jp>
MAIL info@dr-cos.com
Twitter <https://twitter.com/dr-cos.com>
Pinterest <https://www.pinterest.jp/dr-cos/info>

Bonding line Ab

Bonding line BA

How to Ser
Please refe
https://www

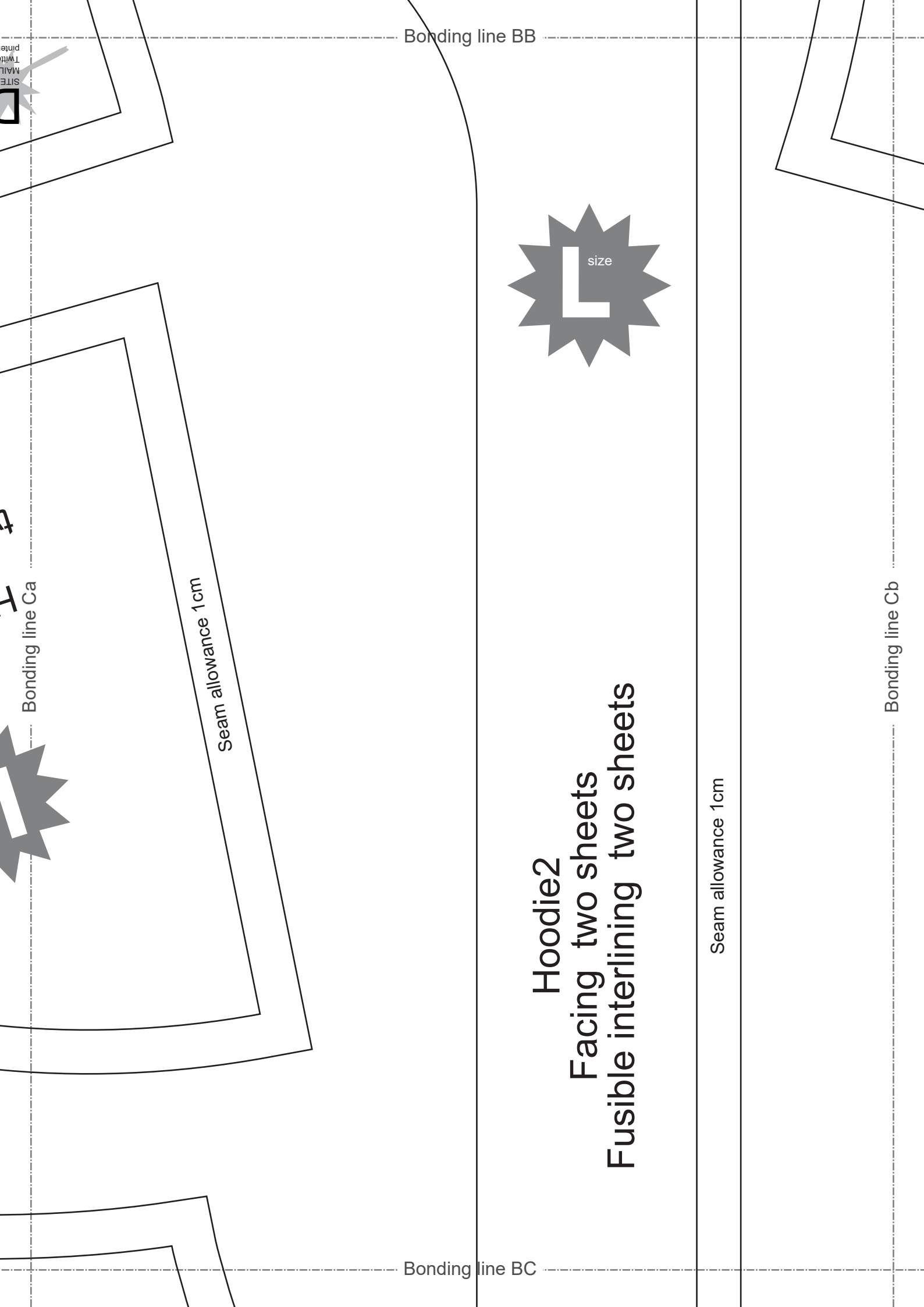
Bonding line Ba

Bonding line Bb



Bonding line BB

MAIL
T
witt
pinte



Bonding line BB

Bonding line BC

Bonding line Ca

Bonding line Cb

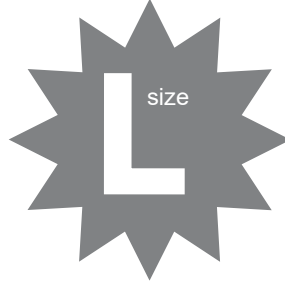
Seam allowance 1cm

Seam allowance 1cm

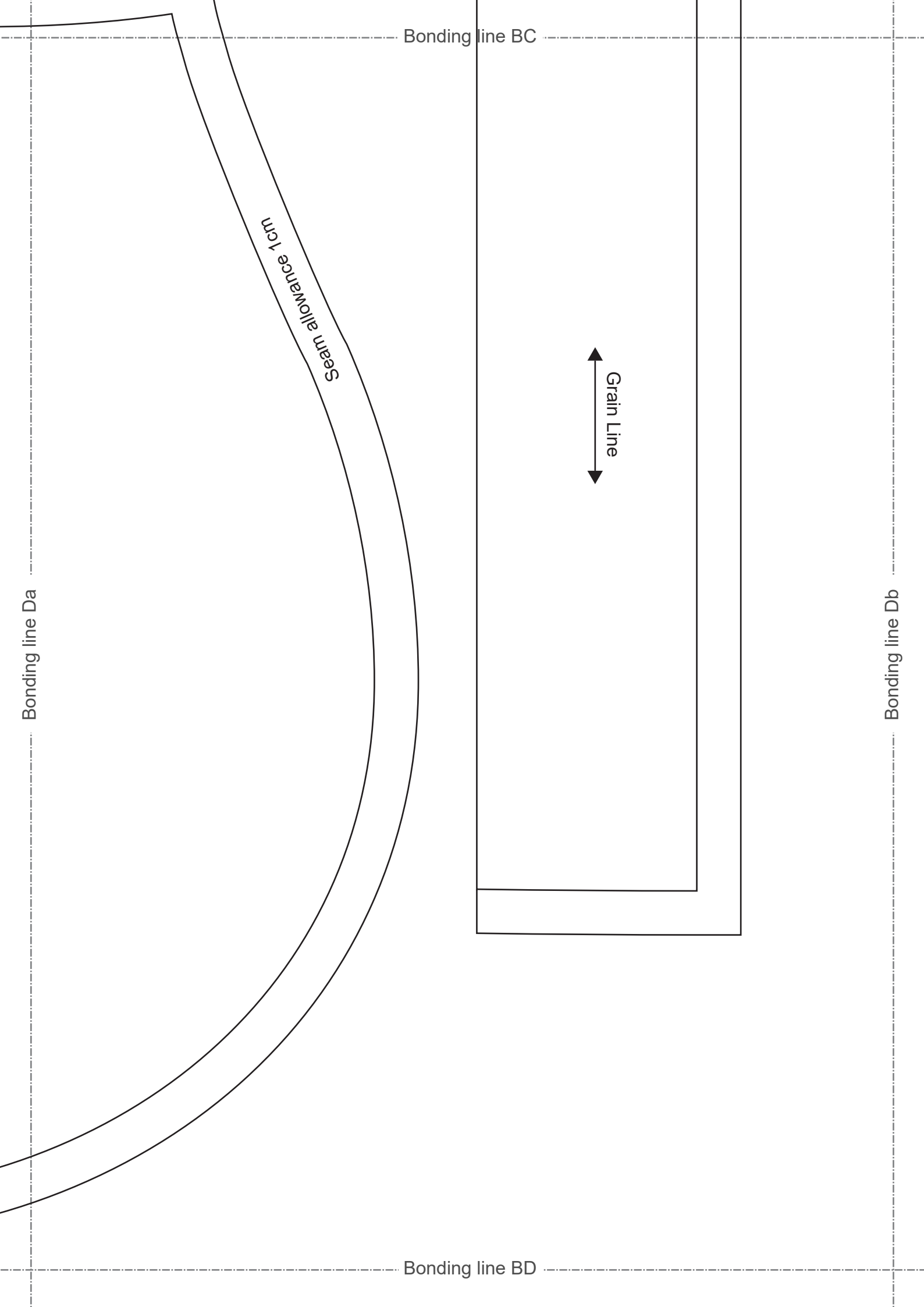
Hoodie2

Facing two sheets

Fusible interlining two sheets



size



Bonding line Ab

Grain Line



What is "Grainline" cut on fold"?
Please refer to this page
<https://www.dr-cos.info/kt-grainline.html>

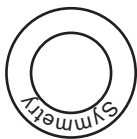
Bonding line CA

Bonding line Ac

Bonding line CA



Hoodie2
Back Body
one sheets



Bonding line Bb

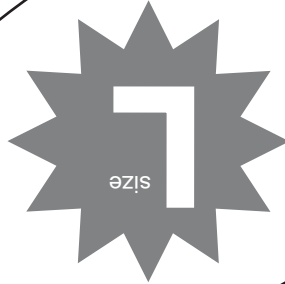
Bonding line Bc

Facing Line

Bonding line CB

Bonding line CB

podiez
one sheets
ning one sheets



allowance 1cm

Bonding line Cb

Bonding line Cc

DRCO

SITE <https://dr-cos.info/en>
MAIL info@dr-cos.com
Twitter <https://twitter.com/@dr-cos>
pinterest <https://www.pinterest.com/@dr-cos>



How to sew sleeves
Please refer to this p
<https://www.dr-cos.in>

Bonding line CC

Bonding line CC

Front

Bonding line Db

Bonding line Dc



Hoodie
Sleeve
two sheets

Bonding line CD

Bonding line CD

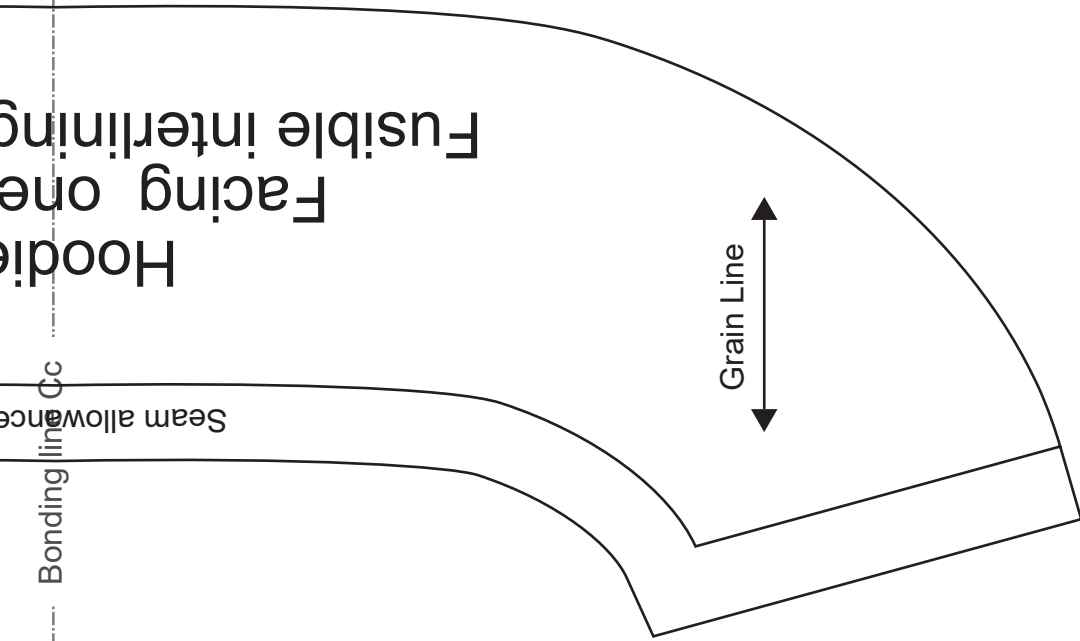
Bonding line Eb



Please
require
cutting
and the
<https://>



Seam allowa



Hoodie
Facing one
Fusible interlining

Grain Line

Seam allowance

Bonding line Cc

Bonding line Cd

RCOS
[dr-cos.info\(en\)](https://dr-cos.com/en) [https://dr-cos.com\(jp\)](https://dr-cos.com/jp)
dr-cos.com
[/twitter.com/@drcos_com](https://twitter.com/drcos_com)
[os://www.pinterest.jp/drcosinfo](https://www.pinterest.jp/drcosinfo)

sleeves and sleeve cuffs.
 to this page
dr-cos.info/kt-cuffs.html

Bonding line DC

Back

Bonding line Dc



body2
leeve
sheets

Bonding line Dd

Bonding line DD

Bonding line DD

Please check here for the
required fabric length images,
cutting reference images,
and the step-by-step sewing instructions.
<https://dr-cos.info/fp-hoodie2.html>



allowance 1cm

Bonding line Ed