

Facing Line

How to make bias tape. Please refer to this page  
<https://www.dr-cos.info/kt-biastape.html>



How to sew bias tape. Please refer to this page  
<https://www.dr-cos.info/kt-biastape3.html>



Bonding line Aa

What is "Grainline" cut on fold"?  
Please refer to this page  
<https://www.dr-cos.info/kt-grainline.html>

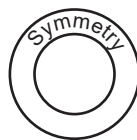


Bonding line AA

Bonding line AA



# LADIES' size S



Hoodie  
Back Body  
one sheets



Bonding line Ba

Bonding line AB

# DRCOS

SITE [http://dr-cos.info\(en\)](http://dr-cos.info(en)) [http://dr-cos.com\(jp\)](http://dr-cos.com(jp))  
MAIL [info@dr-cos.com](mailto:info@dr-cos.com)  
Twitter [https://twitter.com/@drcos\\_com](https://twitter.com/@drcos_com)  
facebook <https://www.facebook.com/drcoscom>

Seam allowance 1/2in.

Grain Line

## Hoodie Pocket two sheets



Grain Line



# DRCOS

SITE [http://dr-cos.info\(en\)](http://dr-cos.info(en)) [http://dr-cos.com\(jp\)](http://dr-cos.com(jp))  
MAIL [info@dr-cos.com](mailto:info@dr-cos.com)  
Twitter [https://twitter.com/@drcos\\_com](https://twitter.com/@drcos_com)  
facebook <https://www.facebook.com/drcoscom>

Bonding line Aa

**DRCOS**  
SITE <http://dr-cos.info/en>, <http://dr-cos.com/tp/>  
MAIL [info@dr-cos.com](mailto:info@dr-cos.com)  
Twitter [https://twitter.com/dr-cos\\_com](https://twitter.com/dr-cos_com)  
facebook <https://www.facebook.com/dr-cos.com>

**LADIES'S**  
size  
**S**

Bonding line Ab

Bonding line BA

eets

Bonding line Ba

Bonding line BA



How to Serge/overlock (sewing machine & overlock sewing machine).  
Please refer to this page  
<https://www.dr-cos.info/kt-serge.html>

Seam allowance 1/2in.

Bonding line BB

Hoodie  
Facing two sheets  
Fusible interlining two sheets



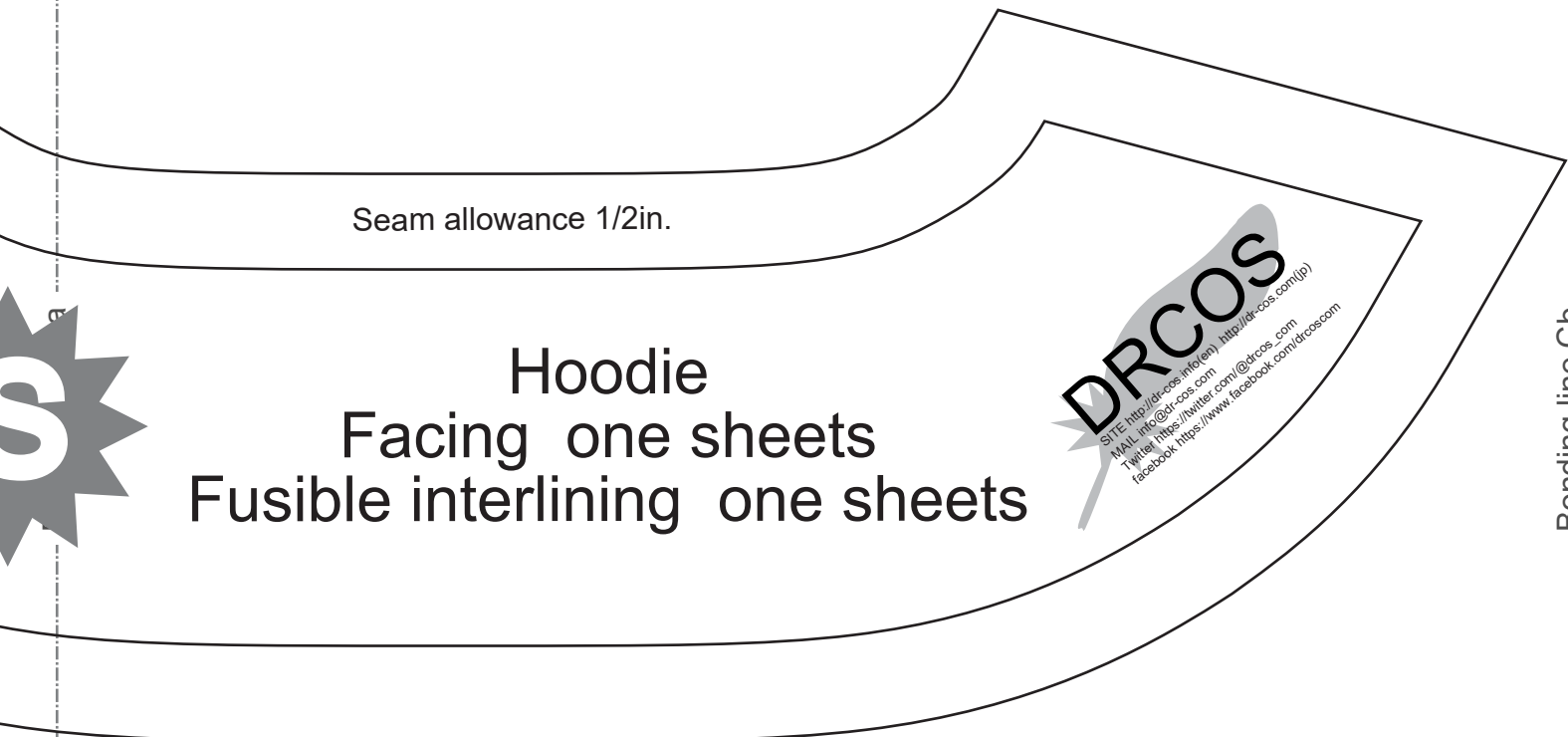
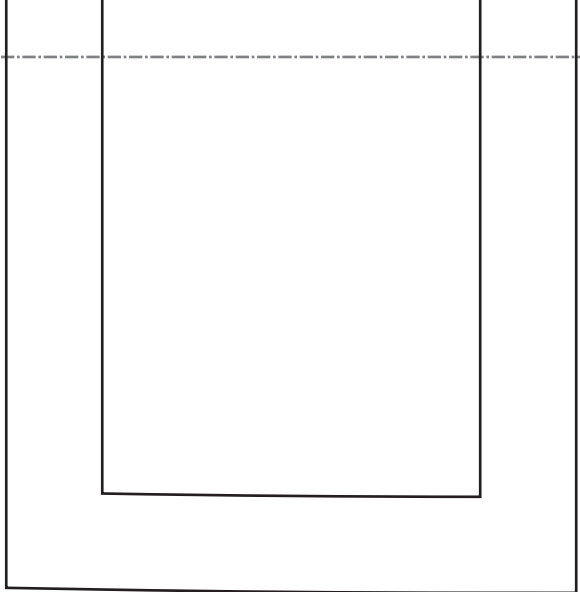
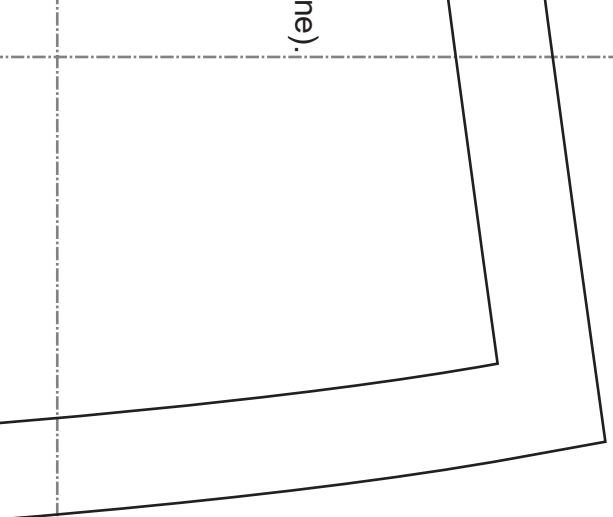
Grain Line

Seam allowance 1/2in.

Bonding line Bb

(en)

Bonding line BB



Seam allowance 1/2in.



Hoodie  
Facing one sheets  
Fusible interlining one sheets



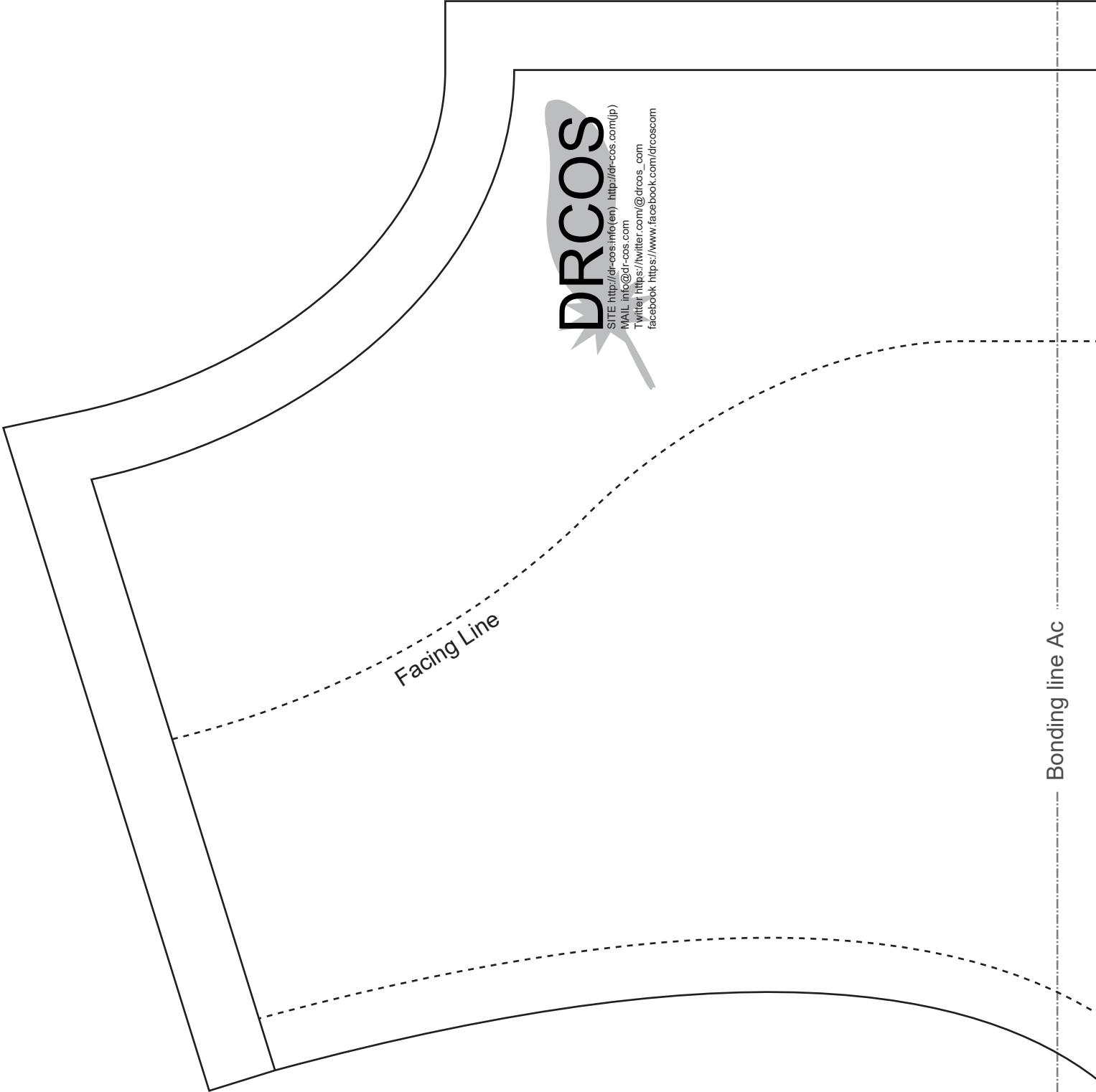
Bonding line Cb

Bonding line BC

Bonding line Ab

Bonding line Ac

Bonding line CA



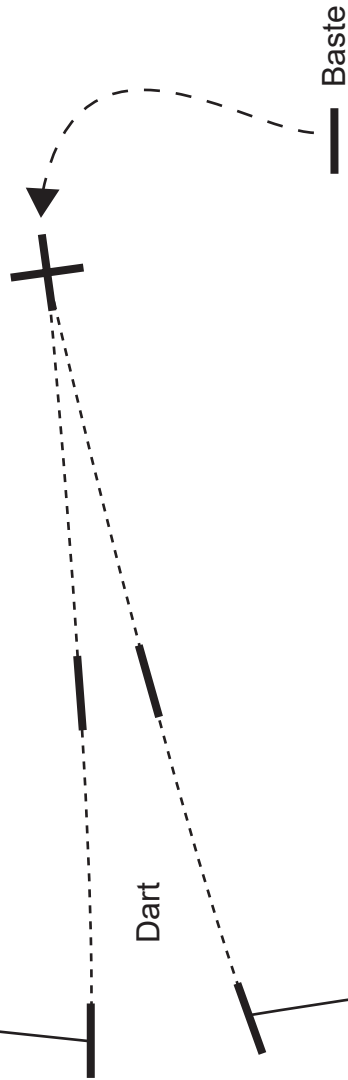
**DRCOS**

SITE <http://drcos.info/en> <http://drcos.com/jp>  
MAIL [info@drcos.com](mailto:info@drcos.com)  
Twitter [https://twitter.com/drcos\\_com](https://twitter.com/drcos_com)  
facebook <https://www.facebook.com/drcoscom>

Bonding line Ac



How to sew darts. Please refer to this page  
<https://www.dr-cos.info/kt-darts.html>



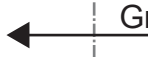
Bonding line DA

Seam allowance 1

# LADIES'S size

Hoodie  
Front Body  
two sheets

Bonding line Ad





Bonding line Bc

Bonding line DA

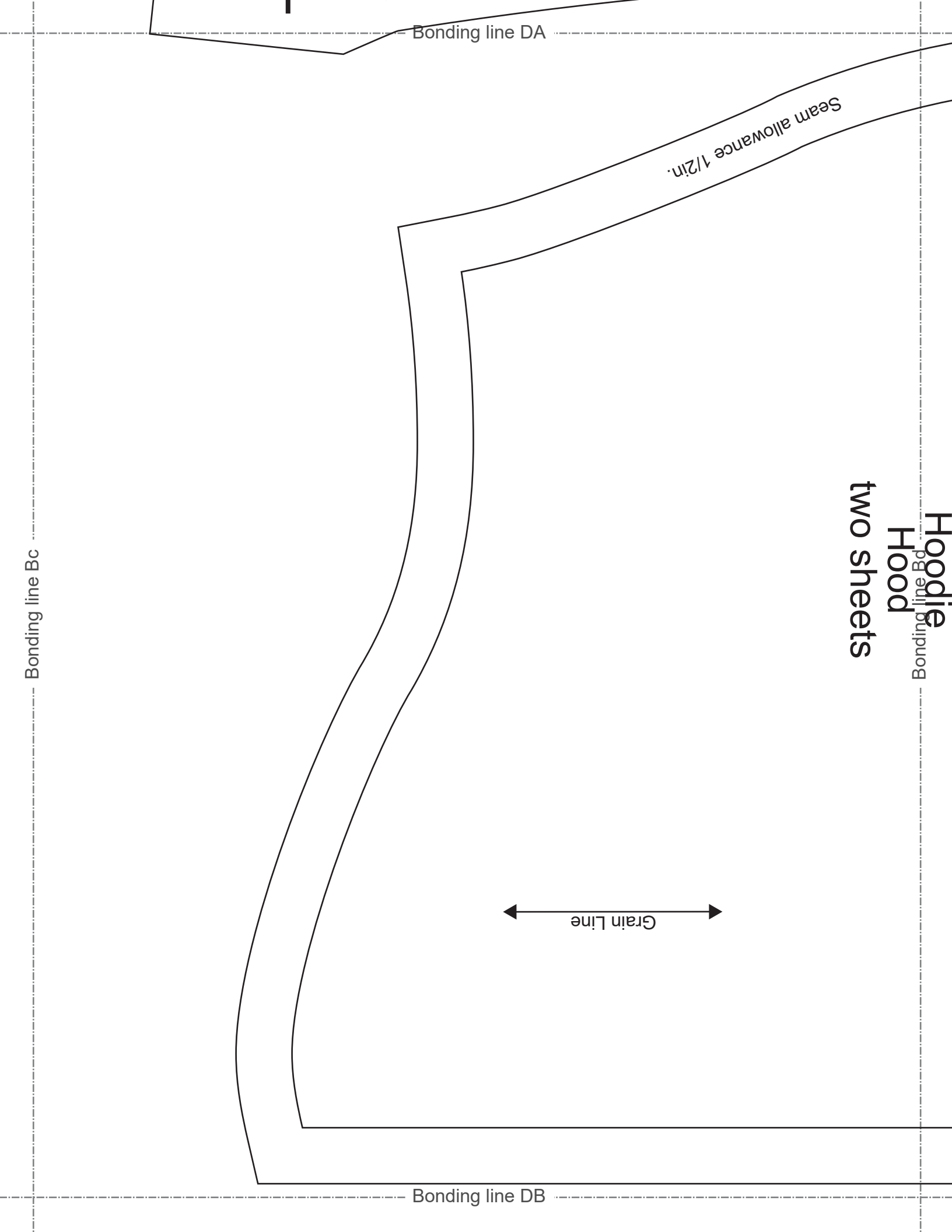
Seam allowance 1/2in.

Hoodie  
Hood  
two sheets

Bonding line Bd

Grain Line

Bonding line DB

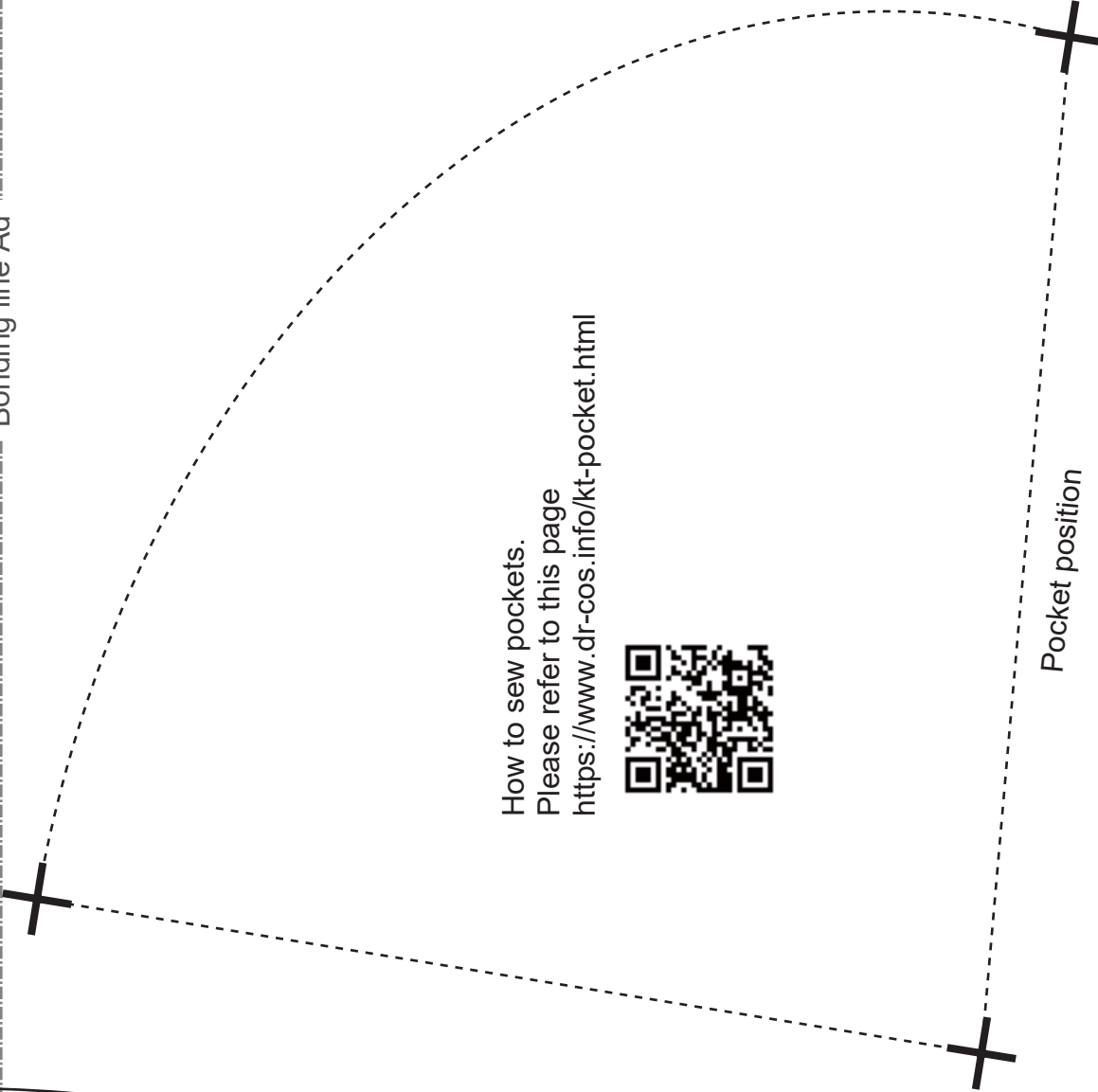


Grain Line



How to sew Facing and Hem. Please refer to this page  
<https://www.dr-cos.info/kt-facingandhem.html>

Bonding line Ad



How to sew pockets.  
Please refer to this page  
<https://www.dr-cos.info/kt-pocket.html>



Pocket position

Bonding line Ae

ance 1/2in.

Bonding line EA

Bonding line EA

Hoodie  
Bonding line Bd  
Hood

LADIES'S  
size  
S

**DRCOS**  
SITE <http://dr-cos.info/en/> <http://dr-cos.com/jp/>  
MAIL [info@dr-cos.com](mailto:info@dr-cos.com)  
Twitter [https://twitter.com/dr-cos\\_com](https://twitter.com/dr-cos_com)  
facebook <https://www.facebook.com/drcos.com>

Bonding line Be

Bonding line EB