



DRCOS

SITE <http://dr-cos.info/en> <http://dr-cos.com/jp>
MAIL info@dr-cos.com
Twitter [@drcos_com](https://twitter.com/@drcos_com)
facebook <https://www.facebook.com/drcoscom>

Bonding line Aa

Bonding line AA

Please refer to this page
kt-biastape.html



Please refer to this page
kt-biastape3.html



Bonding line AA

Facing Line

Bonding line Ba

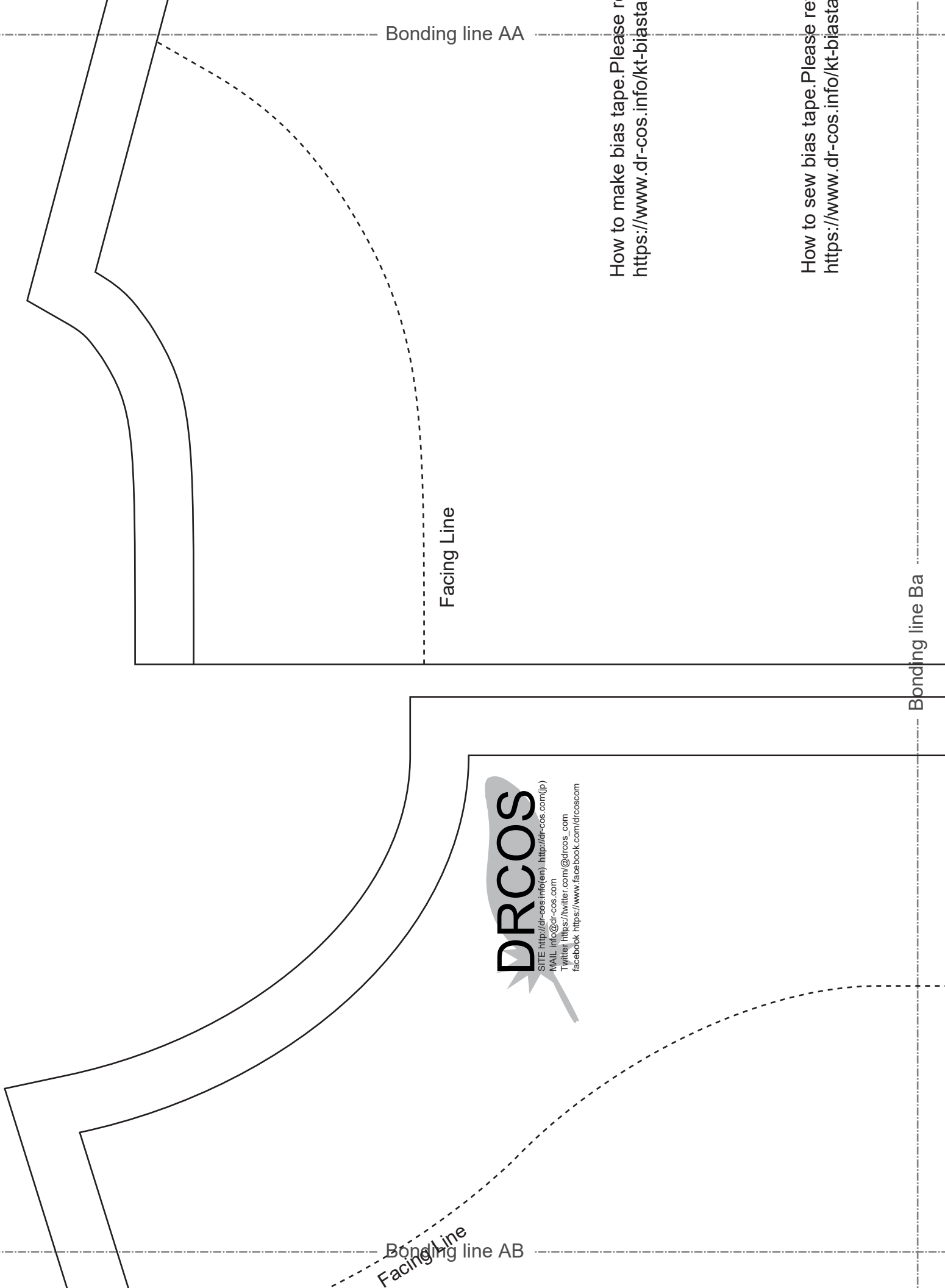
Bonding line AB

DRCOS

SITE <http://drcos.info/en>, <http://drcos.com/jp>
MAIL info@drcos.com
Twitter https://twitter.com/drcos_com
facebook <https://www.facebook.com/drcoscom>

How to make bias tape. Please refer to
<https://www.dr-cos.info/kt-biasta>

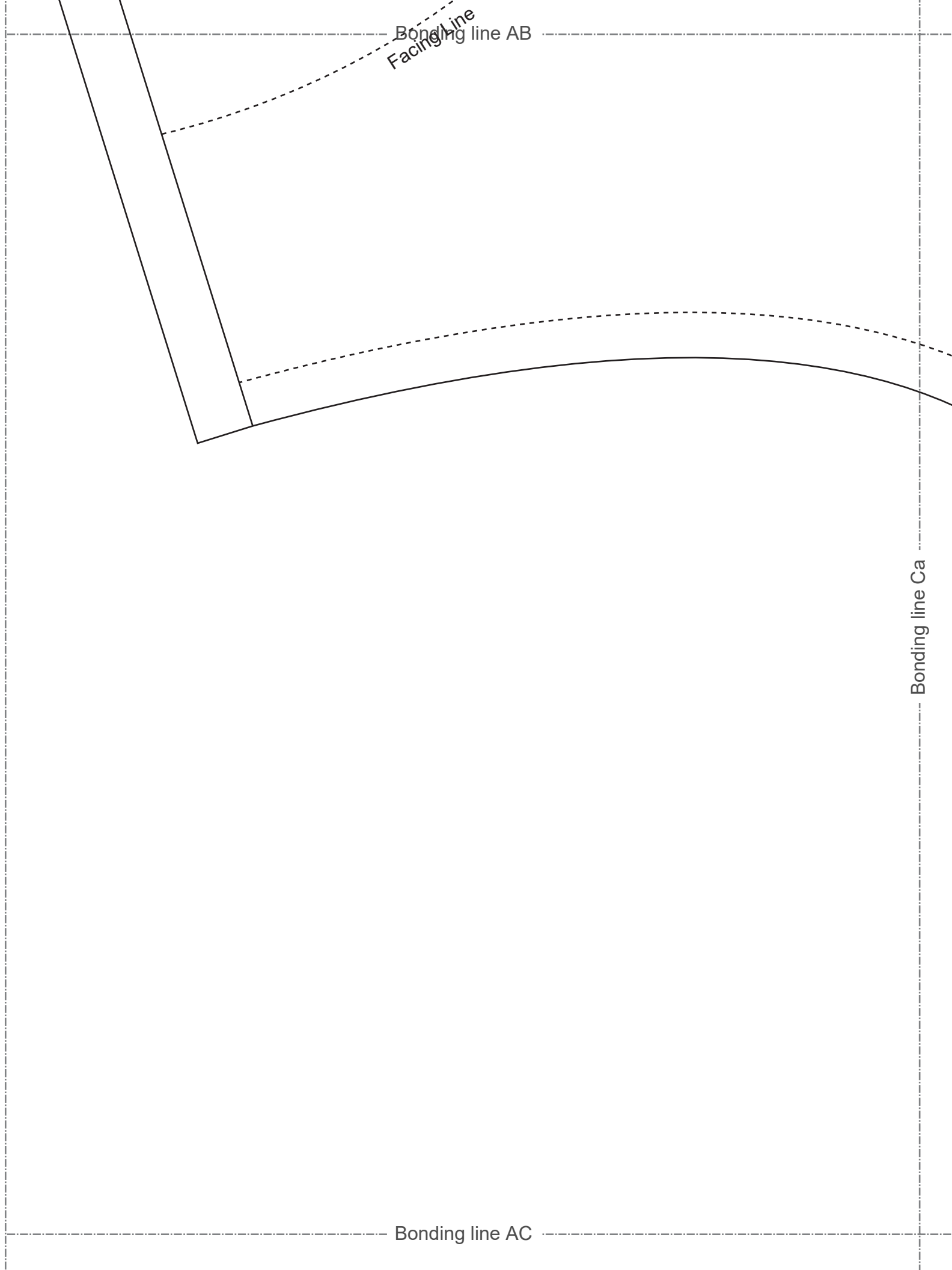
How to sew bias tape. Please refer to
<https://www.dr-cos.info/kt-biasta>



Bonding line
Facing line AB

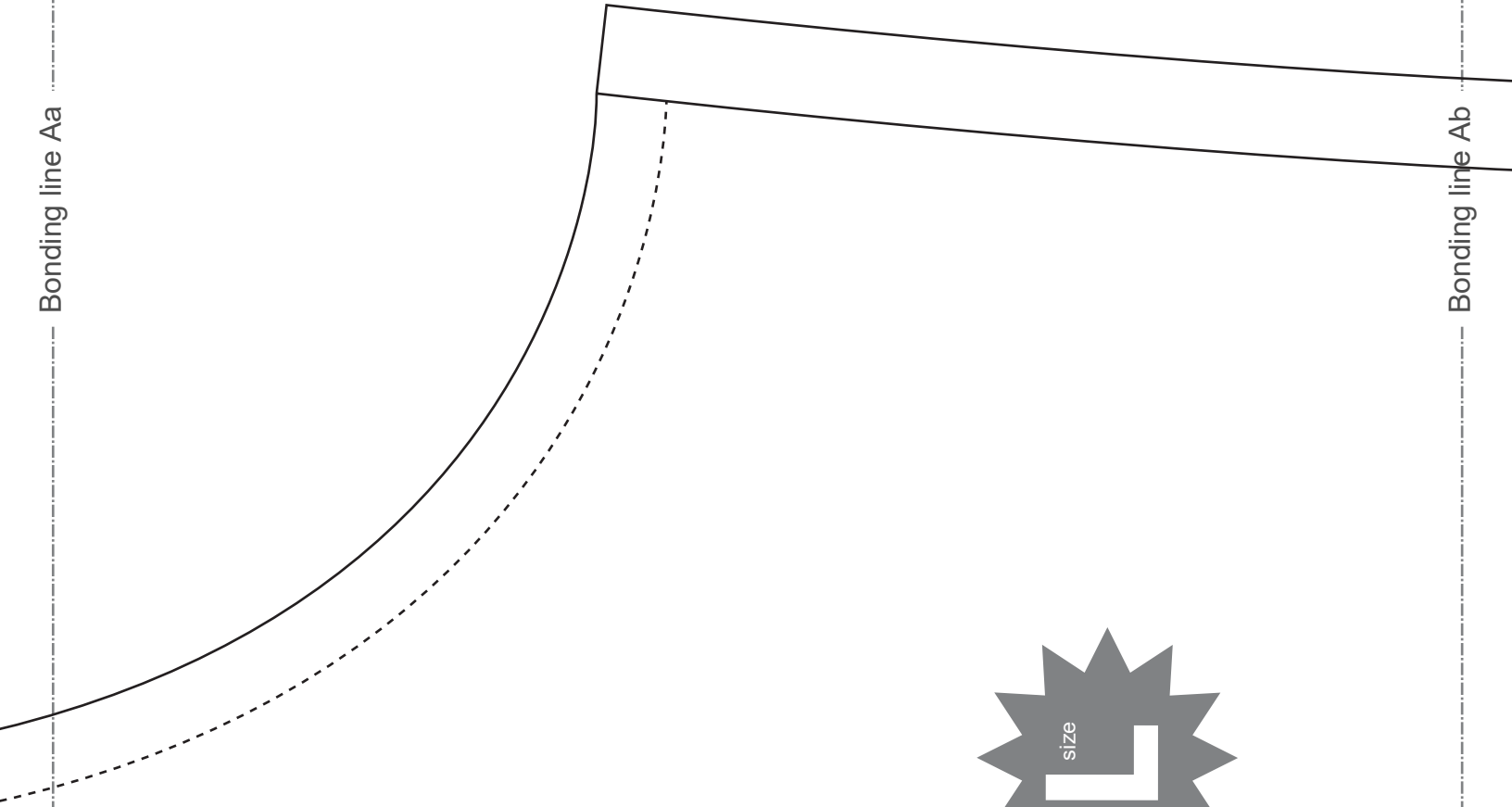
Bonding line Ca

Bonding line AC





Bonding line Aa



Bonding line BA

Bonding line Ab

DIES'LG
size

Hoodie
Back Body
one sheets

Hoodie
Facing two sheets
ble interlining two sheets

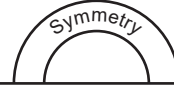
Seam allowance 1/2"n.

LAD

Bonding line Ba

Bonding line BA

What is "Grainline" cut on fold"?
Please refer to this page
<https://www.dr-cos.info/kt-grainline.html>



LADI



F Ba on

Bonding line Bb

Bonding line BB

aste

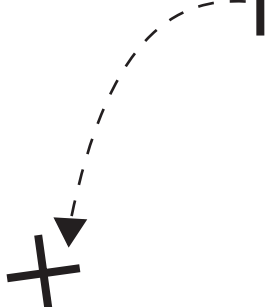


Bonding line Ca

Bonding line BB



How to sew darts. Please refer to this page
<https://www.dr-cos.info/kt-darts.html>



Dart

Baste

size

LADIES'S L

Hoodie
Front Body

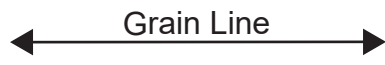
Bonding line Cb

Bonding line BC

Bonding line Ab

Bonding line Ac

Seam allowance 1/2in.



How to Serge/overlock (sewing machine & overlock sewing machine).
 Please refer to this page
<https://www.dr-cos.info/kt-serge.html>



Bonding line CA

011

Grain Line

Bonding line CA

Bonding line Bb

Bonding line Bc

Grain Line



ing and Hem. Please refer to this page
-cos.info/kt-facingandhem.html

Bonding line CB



Front Body two sheets

Bonding line Cb

Bonding line CB

How to sew pockets.
Please refer to this page
<https://www.dr-cos.info/kt-pocket.html>

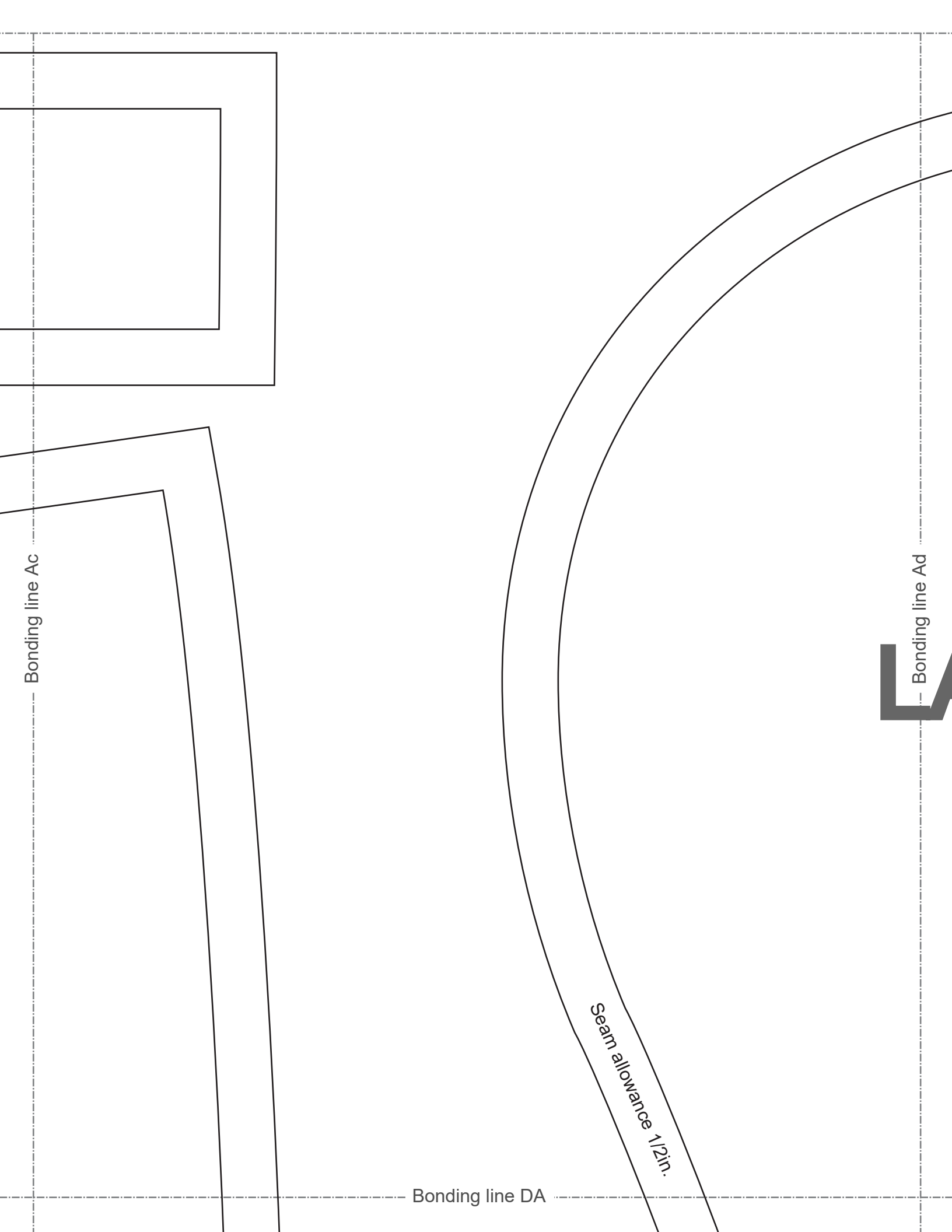


Pocket position

Bonding line Cc

Seam allowance 1/2in.

Bonding line CC



Bonding line DA

Bonding line Bc

DRCOS

SITE <http://dr-cos.info/en> <http://dr-cos.com/jp>
MAIL info@dr-cos.com
Twitter https://twitter.com/dr-cos_com
facebook <https://www.facebook.com/dr-cos.com>

How to sew Facing and

<https://www.dr-cos.info>

Bonding line Bd

LAD

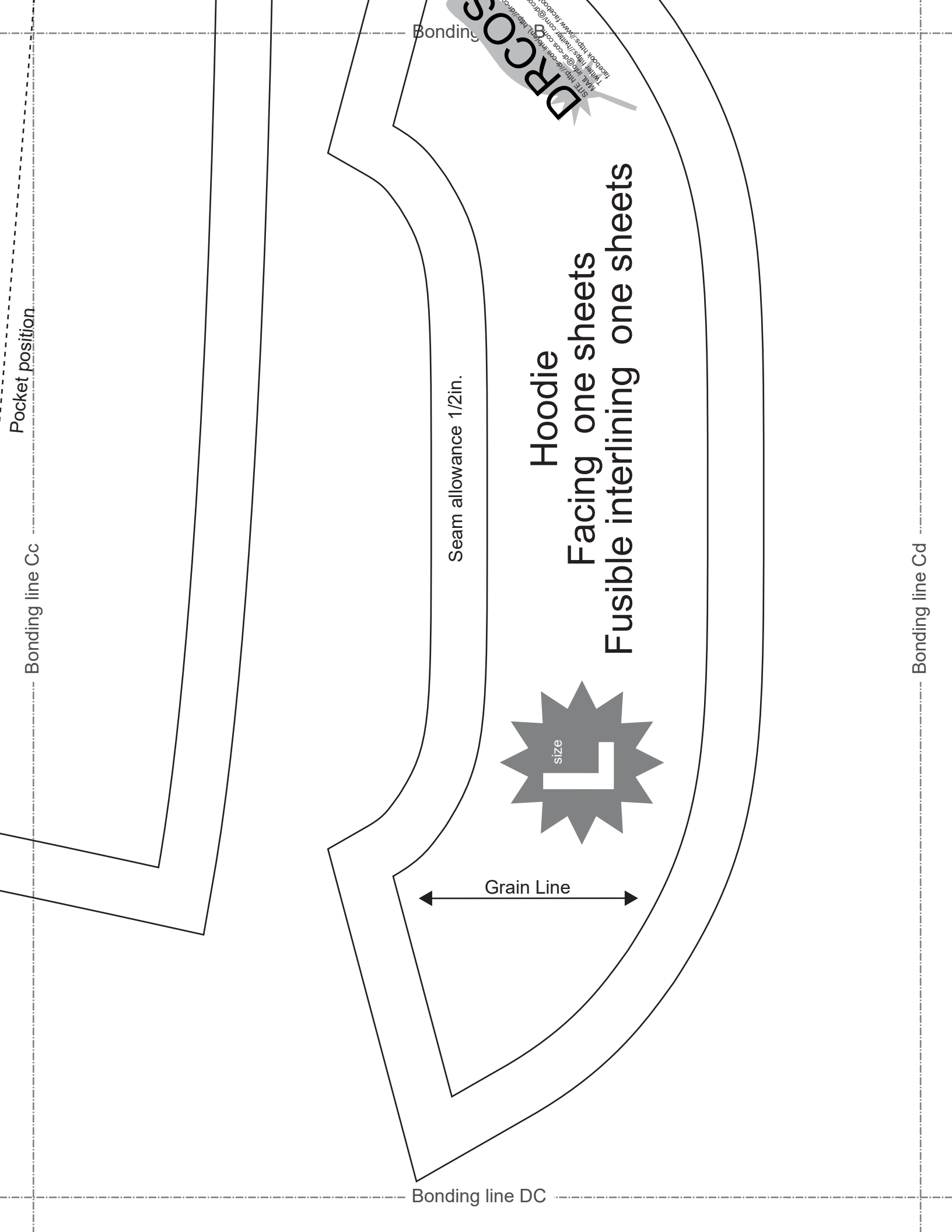
Seam allowance 1/2in.

Grain Line

Bonding

DRCOS

SITE <http://dr-cos.info/en> <http://dr-cos.com/jp>
MAIL info@dr-cos.com
Twitter https://twitter.com/dr-cos_com
facebook <https://www.facebook.com/dr-cos.com>



Bonding line Cc

Pocket position

Bonding line Cc

Bonding line DC

Bonding line Cd

Seam allowance 1/2in.

Grain Line



Hoodie

Facing one sheets

Fusible interlining one sheets

DRCOS
SITE: <http://drcos.com>
Twitter: <https://twitter.com/drcos>
Facebook: <https://www.facebook.com/drcos>
Email: info@drcos.com
Phone: [+14154381000](tel:+14154381000)

DRCOS

SITE [http://dr-cos.info\(en\)](http://dr-cos.info(en)) [http://dr-cos.com\(jp\)](http://dr-cos.com(jp))

MAIL info@dr-cos.com

Twitter [@drcos_com](https://twitter.com/@drcos_com)

facebook <https://www.facebook.com/drcoscom>

Bonding line Ad

LADIES'  size

Hoodie
Hood
two sheets

Bonding line EA



Gr

Bonding line Ae

Bonding line EA

Grain Line



Bonding line Bd

Bonding line Be

DIES' L size

Hoodie
Pocket
two sheets

DRCOS

SITE [http://dr-cos.info\(en\)](http://dr-cos.info(en)) [http://dr-cos.com\(jp\)](http://dr-cos.com(jp))
MAIL info@dr-cos.com
Twitter [@drcos_com](https://twitter.com/@drcos_com)
facebook <https://www.facebook.com/drcoscom>

Bonding line EB