

Facing Line

DRCOS

SITE [http://dr-cos.info\(en\)](http://dr-cos.info(en)) [http://dr-cos.com\(jp\)](http://dr-cos.com(jp))

MAIL info@dr-cos.com

Twitter [@drcos_com](https://twitter.com/@drcos_com)

facebook <https://www.facebook.com/drcoscom>

Bonding line Aa

size

4

Children's

Hoodie
Front Body
two sheets

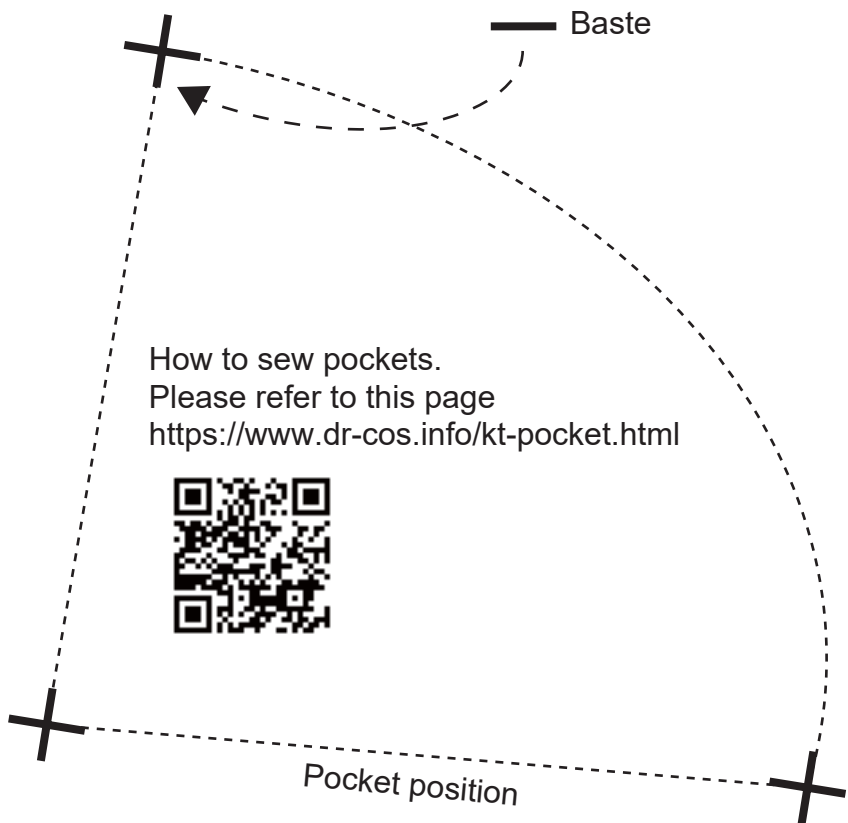
Grain Line

Bonding line AA

S

Bonding line AA

Seam allowance 1/2in.



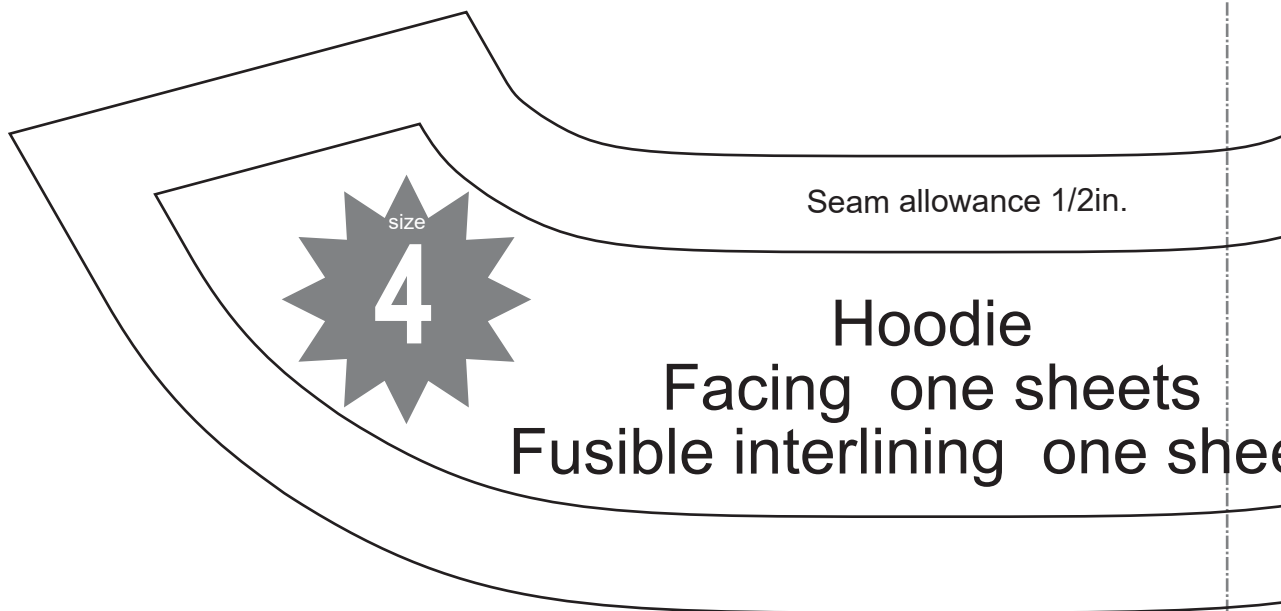
How to sew pockets.
 Please refer to this page
<https://www.dr-cos.info/kt-pocket.html>



How to sew Facing and Hem. Please refer to this page
<https://www.dr-cos.info/kt-facingandhem.html>



Bonding line Ba



Hoodie
 Facing one sheets
 Fusible interlining one sheet

Bonding line AB

Bonding line Aa

Bonding line Ab

DRCOS
 SITE: <http://dr-cos.info/en> <http://dr-cos.com>
 MAIL: info@dr-cos.com
 Twitter: <https://twitter.com/dr-cos>
 facebook: <https://www.facebook.com/drcos.com>

Facing Line

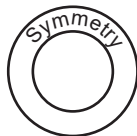
How to make bias tape. Please refer to this page
<https://www.dr-cos.info/kt-biastape.html>



How to sew bias tape. Please refer to this page
<https://www.dr-cos.info/kt-biastape3.html>



What is "Grainline" cut on fold?
Please refer to this page
<https://www.dr-cos.info/kt-grainline.html>



Children's

size

4

Hoodie Back Body one sheets

How to Serge/over
Please refer to th
<https://www.dr-co>

in.

Bonding line BA

Bonding line Ba

Bonding line BA



erge/overlock (sewing machine & overlock sewing machine).
refer to this page
www.dr-cos.info/kt-serge.html

Seam allowance 1/2in.

Bonding line Bb

DRCOS

SITE <http://dr-cos.info/en> <http://dr-cos.com/jp>
MAIL info@dr-cos.com
Twitter https://twitter.com/@drcos_com
facebook <https://www.facebook.com/drcoscom>

s
sheets

DRCOS

SITE <http://dr-cos.info/en> <http://dr-cos.com/jp>
MAIL info@dr-cos.com
Twitter https://twitter.com/@drcos_com
facebook <https://www.facebook.com/drcoscom>

Bonding line BB

cos.com/ib

Bonding line Ab

Children's ^{size} 4

e sheets
two sheets

Seam allowance 1/2in.

Bonding line CA

Grain Line

Bonding line Ac

Seam allowance 1/2in.

Bonding line Bb

Hoodie Facing two sheets Fusible interlining two sheets

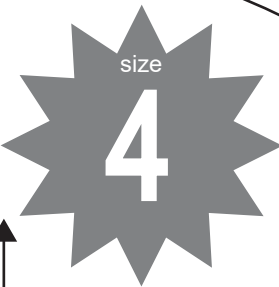


Grain Line

S

Bonding line CA

Seam allowance 1/2in.



size

4

Hoodie Pocket two sheets

DRCOS

SITE <http://dr-cos.info/en> <http://dr-cos.com/jp>
MAIL info@dr-cos.com
Twitter [@drcos_com](https://twitter.com/@drcos_com)
facebook <https://www.facebook.com/drcoscom>

Bonding line Bc

Bonding line CB

Bonding line Ad

DRCOS
 SITE <http://dr-cos.info/en> <http://dr-cos.com/jp>
 MAIL info@dr-cos.com
 TWITTER https://twitter.com/@drcos_com
 FACEBOOK <https://www.facebook.com/drcoscom>

Children's **4** size

Hoodie
 Hood
 two sheets

Seam allowance 1

Bonding line Ac

Bonding line DA