

Bonding line Aa

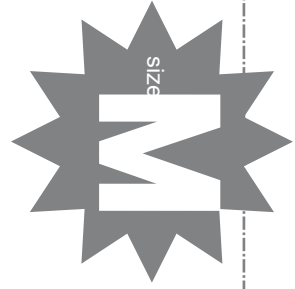
How to Serge/overlock (s  
Please refer to this page  
<https://www.dr-cos.info/kt>


Please check here for the  
required fabric length images,  
cutting reference images,  
and the step-by-step sewing instructions.  
<https://dr-cos.info/fp-halternecktop.html>

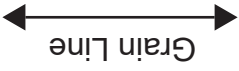


Seam allowance 1cm

Bonding line AA



  
**Halternecktop**  
**Front Body**  
**one sheets**



erlock (sewing machine & overlock sewing machine).  
s page  
s.info/kt-serge.html

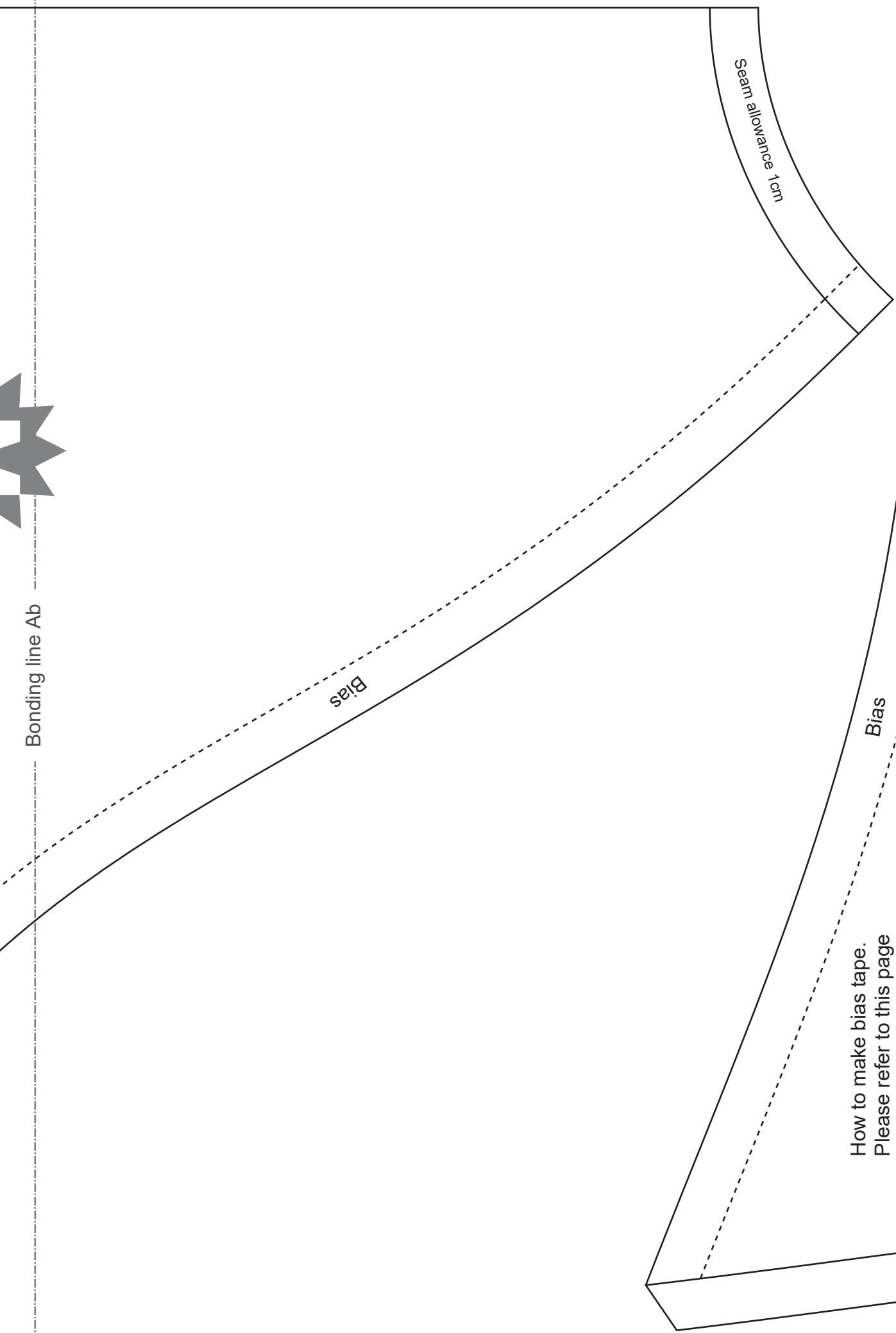
Bonding line Aa

Bonding line Ab

Bonding line BA



Bonding line Ab



How to make bias tape.  
 Please refer to this page  
<https://www.dr-cos.info/kt-biastape.html>



How to sew bias tape.  
 Please refer to this page  
<https://www.dr-cos.info/kt-biastape3.html>

Bonding line CA



Please refer to this page  
<https://www.dr-cos.info/RebliasAfe3.html>



Halternecktop  
Back Body  
one sheets



Bonding line DA

Bonding line Ad  
Gra

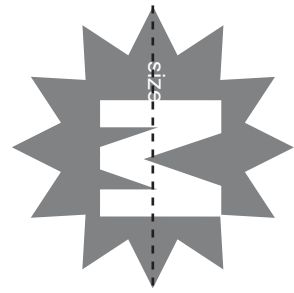
Bonding line Ad  
Grain Line



Seam allowance 1cm

Seam allowance 1cm

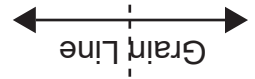
Bonding line EA



allowance 1cm

Bonding line EA

Halternecktop  
Neck  
one sheets



SITE <https://dr-cos.jp/en/> <https://dr-cos.com/jp/>  
MAIL [info@dr-cos.com](mailto:info@dr-cos.com)  
Twitter <https://twitter.com/drccos>  
Pinterest <https://www.pinterest.jp/drccosinfo>

Bonding line EB

Bonding line Bd