

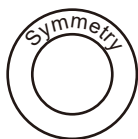
Facing line

DRCOS

SITE <https://dr-cos.info/en> <https://dr-cos.com/jp>
MAIL info@dr-cos.com
Twitter [@drcos_com](https://twitter.com/@drcos_com)
pinterest <https://www.pinterest.jp/drcosinfo>



Children's



**Chef Coat
Back Bodice
cut one**

Bonding line AA

Bonding line Aa



Children's

cut one

Bonding line AA



Grain Line

Bonding line AB

1/2in

Children

Chef Coat
Back Bodice(side)
cut two

Bonding line Ba



Grain Line

DRCOS

SITE <https://dr-cos.info/en> <https://dr-cos.com>
MAIL info@dr-cos.com
Twitter <https://twitter.com/drcos>
pinterest <https://www.pinterest.jp/drcos>

Seam allowance 1

Bonding line AB

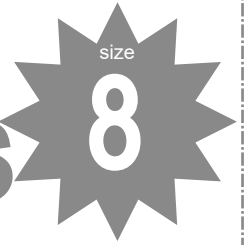
Seam allowance 1/2in.

Seam allowance 1/2in.
pinterest https://www.pinterest.jp/drcosinfo

DRCOS

SITE [https://dr-cos.info\(en\)](https://dr-cos.info(en)) [https://dr-cos.com\(jp\)](https://dr-cos.com(jp))
MAIL info@dr-cos.com
Twitter [@drcos_com](https://twitter.com/@drcos_com)
pinterest <https://www.pinterest.jp/drcosinfo>

Children's



Seam allowance

Bonding line Ca

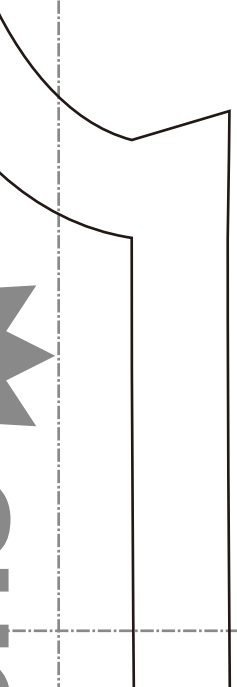
Grain Line



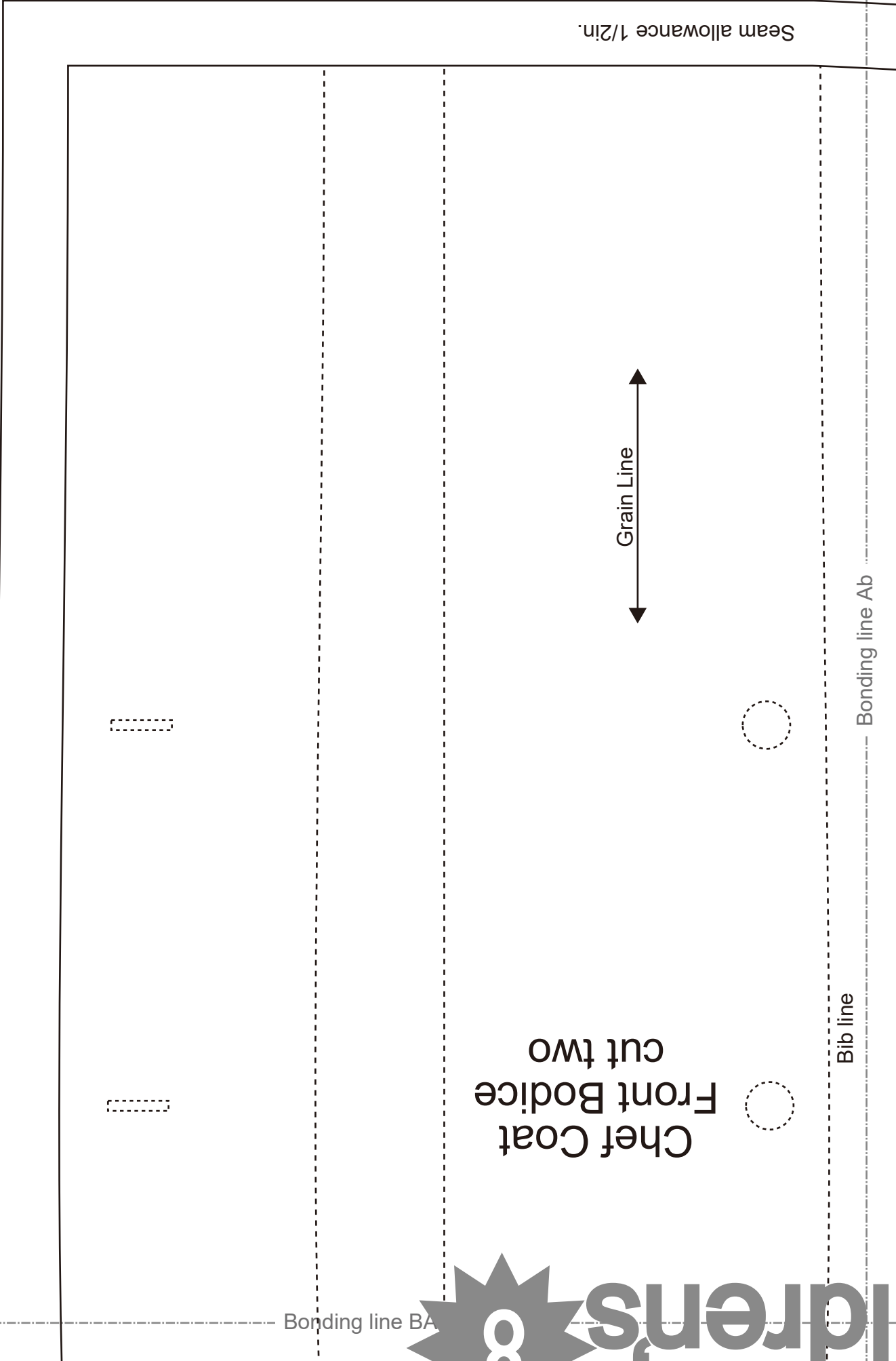
Chef Co
Facing
Fusible inter
cut one

Seam allowance

Bonding line AC



Bonding line Aa



Chef Coat
Front Bodice
cut two

Grain Line

Seam allowance 1/2in.

Bib line

Bonding line Ab

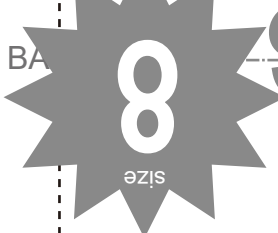
Bonding line BA



cut two

Bonding line Ba

Bonding line BA



Children's



Center position

Bonding line Bb

Facing line



Collar position



dr COS

fo(en) [https://dr-cos.com\(jp\)](https://dr-cos.com(jp))
r.com/@drcos_com
w.pinterest.jp/drcosinfo

ance 1/2in.

Bonding line BB

eam allowance 1/2in.

Bonding line BB

**Chef Coat
Collar
cut two**

**Fusible interlining
cut one**

Grain Line

eam allowance 1/2in.

Bonding line Ca

Bonding line Cb

**ef Coat
acing
interlining
t one**

DRCOS

Website: <https://drcos.info/en> | <https://drcos.com>
Email: info@drcos.com
Twitter: <https://twitter.com/drcos>
Pinterest: <https://www.pinterest.jp/drcosinfo>

eam allowance 1/2in.

Bonding line BC



Bonding line Ac
Center position

Baste

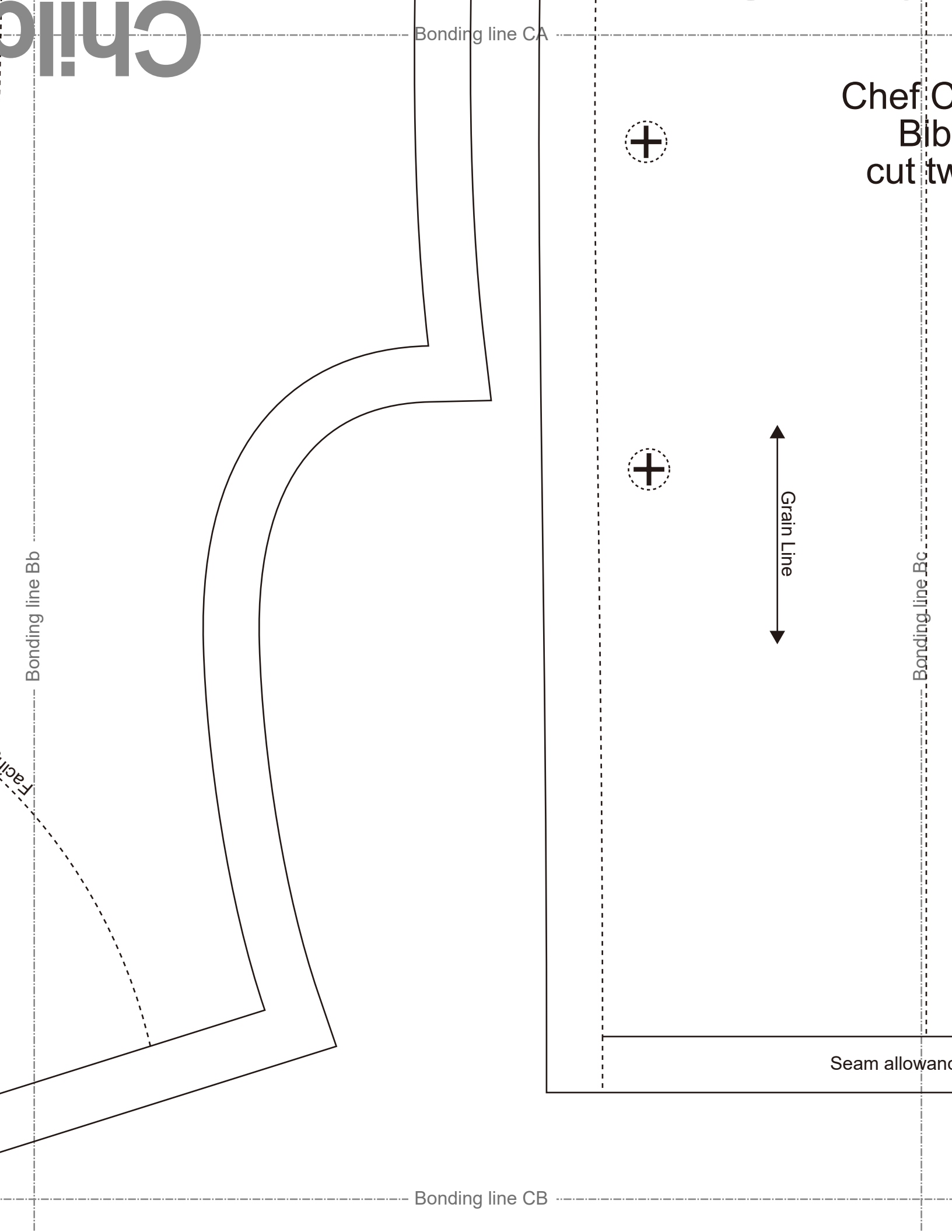
Button & Buttonhole Position

Bonding line Ab

DRCOS
SITE [https://drcos.info\(en\)](https://drcos.info/en) [https://drcos.com\(p\)](https://drcos.com(p))
MAIL info@drcos.com
Twitter https://twitter.com/drcos_com
Pinterest <https://www.pinterest.jp/drcosinfo>

Bib line

Bonding line CA



Bonding line CA

Chef Bib
cut two



Grain Line

Bonding line Bb

Bonding line Bc

Bonding line CB

Seam allowance

Facili

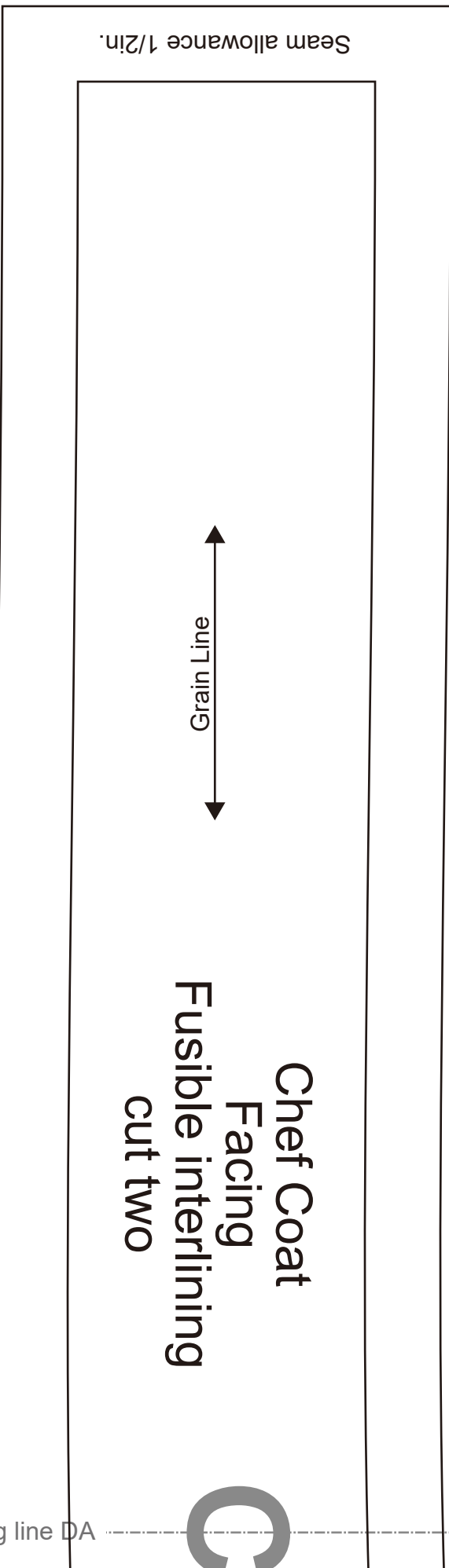
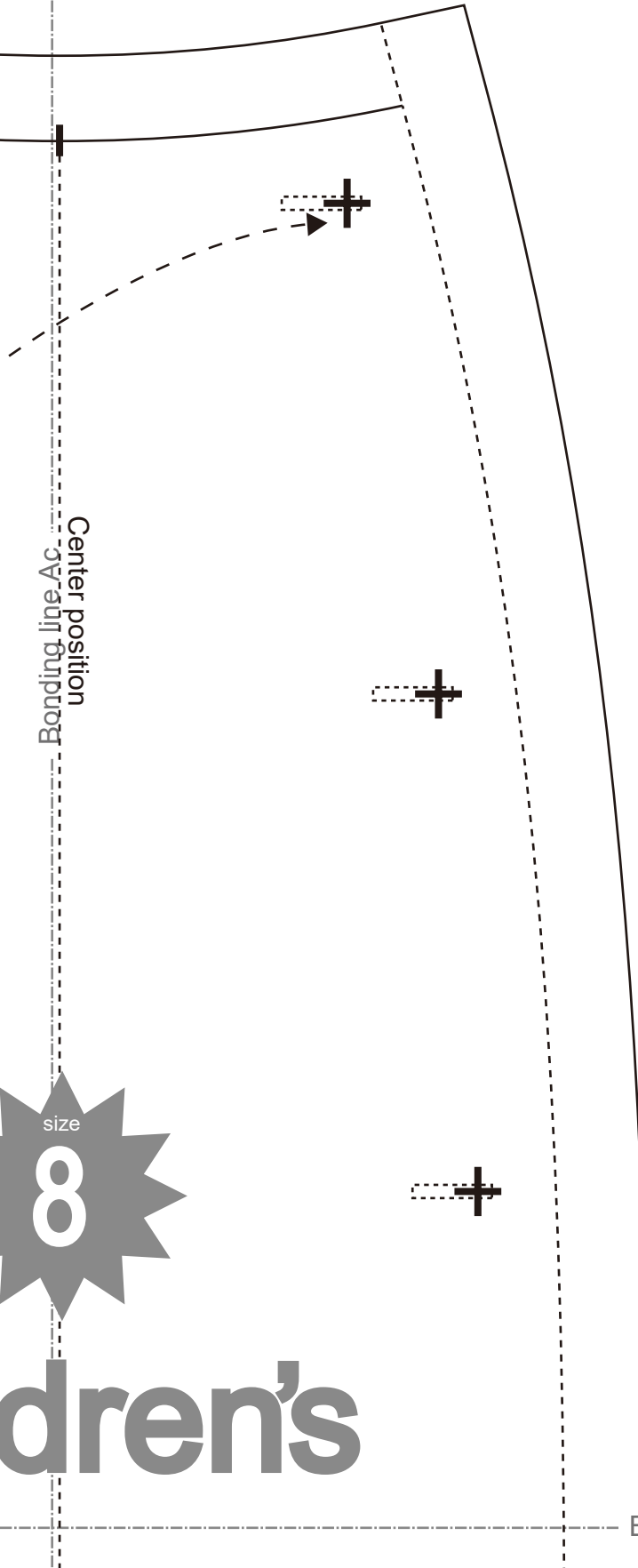
dren's



size

8

Center position
Bonding line Ac



Seam allowance 1/2in.



Chef Coat
Facing
Fusible interlining
cut two

Bonding line DA

Bonding line Ad



ef Coat
Bib
ut two



Bonding line Bc

Bonding line DA

Children's
8 size

Bonding line Bd

DRCOS

SITE <https://dr-cos.info/en> <https://dr-cos.com/jp>
MAIL info@dr-cos.com
Twitter https://twitter.com/drcos_com
pinterest <https://www.pinterest.jp/drcosinfo>

allowance 1/2in.

Bonding line DB

allowance 1/2in.

Bonding Line Grain Line

of Coat
eeve
it two



Back

Bonding line EA

Bonding line Ad

DRICOS
info@dricos.com
dricos.com
www.pinterest.jp/driscosinfo

Bonding line EA

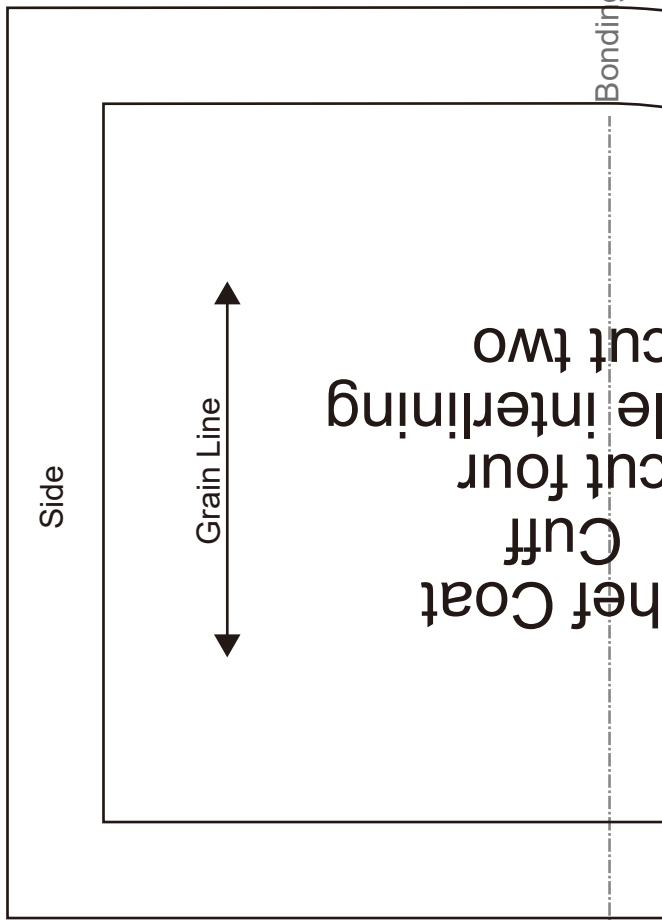
Back

Bonding line Bd

Bonding line Be

DRICOS
SITE: <https://dr-cos.com/en/> (en)
MAIL: info@dr-cos.com
Pinterest: <https://www.pinterest.com/driscos/>
<https://dr-cos.com/jp/>
<https://dr-cos.com/pt/>

Bonding line EB



Children

Chef Co
Sleeve
cut tw

Bonding line
Grain Line

Seam allowance

Bonding line FA Front

Front

Bonding line FA

SITE <https://dr-cos.info/en>, <https://dr-cos.com/jp>
MAIL info@dr-cos.com
Twitter <https://twitter.com/dr-cos>
Pinterest <https://www.pinterest.jp/dr-cos>

DRCO

Bonding line Be

Chet
Cut
cut f
Fusible in
cut t

SITE <https://dr-cos.info/en>, <https://dr-cos.com/jp>
MAIL info@dr-cos.com
Twitter <https://twitter.com/dr-cos>
Pinterest <https://www.pinterest.jp/drcosinfo>

DRCOS

Stitch

Seam allowance 1/2in.

Children's



Side

Bonding line FB