

Facing line

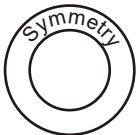
**DRCOS**

SITE [https://dr-cos.info\(en\)](https://dr-cos.info(en)) [https://dr-cos.com\(jp\)](https://dr-cos.com(jp))  
MAIL [info@dr-cos.com](mailto:info@dr-cos.com)  
Twitter [@drcos\\_com](https://twitter.com/@drcos_com)  
pinterest <https://www.pinterest.jp/drcosinfo>

size

**4**

**Children's**



**Chef Coat  
Back Bodice  
cut one**



**Children's**

Bonding line AA

Bonding line Aa



cut on fold

Bonding line AA



Seam allowance 1/2in.

Bonding line AB

# Chilo

**Chef Coat  
Back Bodice(side)  
cut two**



## DRCOS

SITE <https://dr-cos.info/en> <https://dr-cos.com/jp>  
MAIL [info@dr-cos.com](mailto:info@dr-cos.com)  
Twitter [https://twitter.com/drcos\\_com](https://twitter.com/drcos_com)  
Pinterest <https://www.pinterest.jp/drcosinfo>

Seam allowance 1/2in.

Bonding line Ba

Bonding line AB

Side

Grain Line

Chef Coat  
Cuff

cut four  
Fusible interlining  
cut two

Stitch

**DRCOS**

SITE <https://dr-cos.info/en> <https://dr-cos.com/jp>  
MAIL [info@dr-cos.com](mailto:info@dr-cos.com)  
Twitter [@drcos\\_com](https://twitter.com/@drcos_com)  
Pinterest <https://www.pinterest.jp/drcosinfo>



**Children's**

Side

Bonding line AC

Seam allowance 1/2in.

Front

Bonding line Ca

Bonding line Aa

Bonding line Ab

Chet Coat  
Front Bodice  
cut two

Grain Line

Bib line



Bonding line BA

Seam allowance 1/2in.

COS  
(en) https://dr-cos.com/(p  
om/@dr-cos.com  
interest.jp/drcosinfo

Children's

Bonding line BA

Center position

Collar position

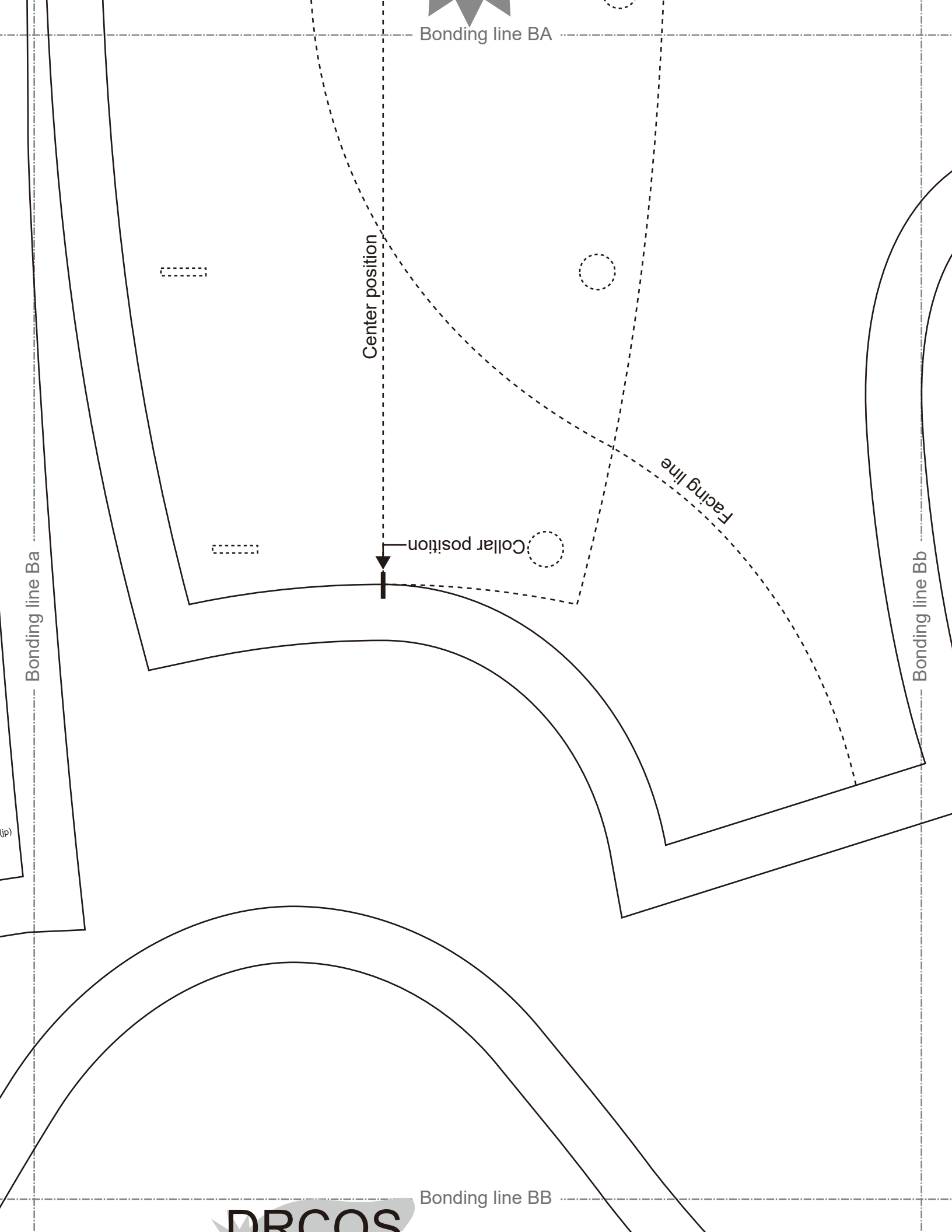
Facing line

Bonding line Ba

Bonding line Bb

Bonding line BB

 DRCOS



Bonding line BB

# DRCOS

SITE [https://dr-cos.info\(en\)](https://dr-cos.info(en)) [https://dr-cos.com\(jp\)](https://dr-cos.com(jp))  
MAIL [info@dr-cos.com](mailto:info@dr-cos.com)  
Twitter [@drcos\\_com](https://twitter.com/@drcos_com)  
pinterest <https://www.pinterest.jp/drcosinfo>

# Children's size 4

Back

Chef Coat  
Sleeve  
cut two



Seam allowance 1/2in.

Bonding line Ca

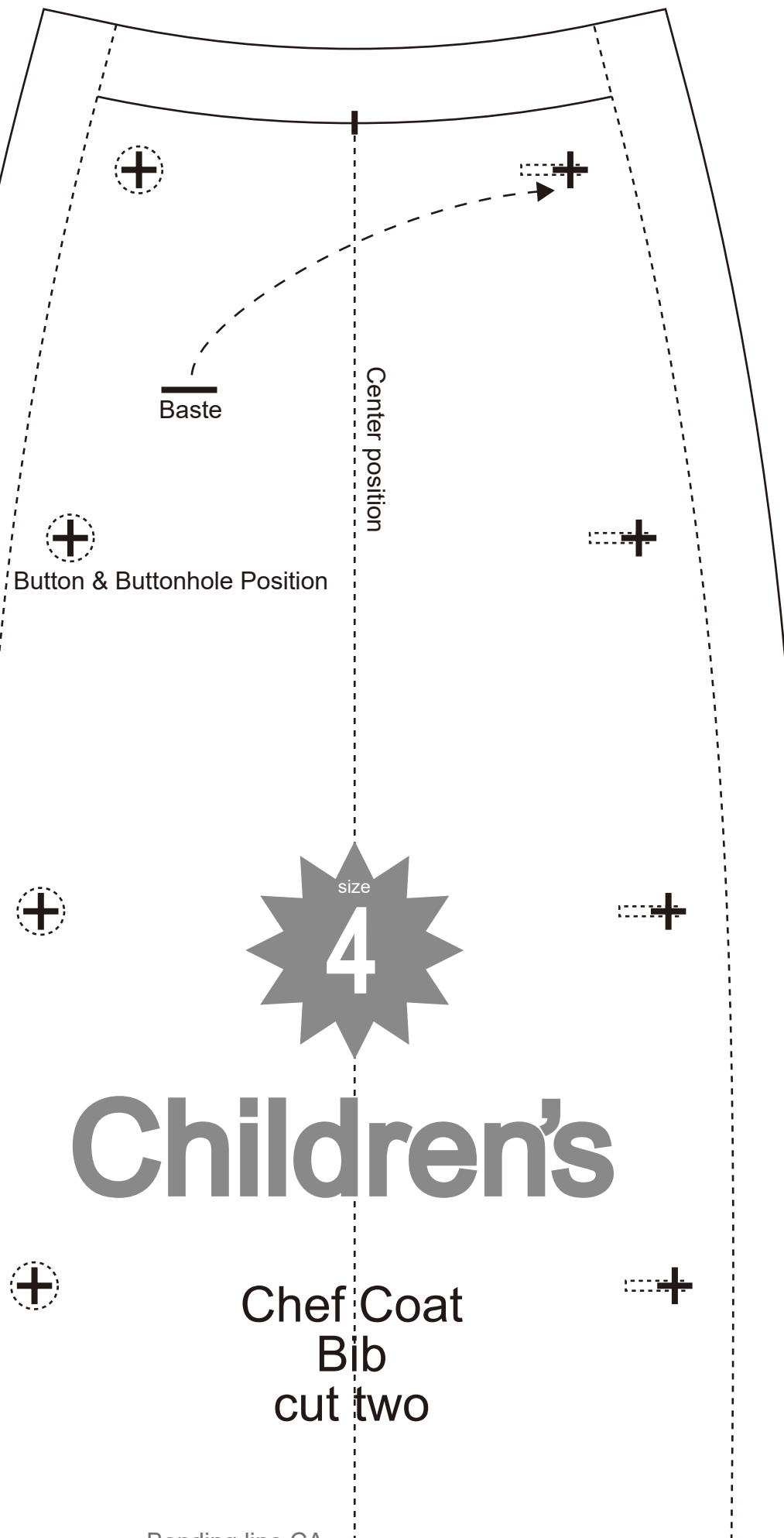
Bonding line Cb

Bonding line BC

DR COS  
SITE <https://dr-cos.info/en> <https://dr-cos.com>  
MAIL [info@dr-cos.com](mailto:info@dr-cos.com)  
TWITTER <https://twitter.com/dr-cos>  
PINTEREST <https://www.pinterest.jp/dr-cos>

Bonding line Ab

Bonding line Ac



size  
**4**

# Children's

Chef Coat  
Bib  
cut two

Bonding line CA



Bonding line CA



# DRCOS

SITE [https://dr-cos.info\(en\)](https://dr-cos.info(en)) [https://dr-cos.com\(jp\)](https://dr-cos.com(jp))  
MAIL [info@dr-cos.com](mailto:info@dr-cos.com)  
Twitter [@drcos\\_com](https://twitter.com/@drcos_com)  
pinterest <https://www.pinterest.jp/drcosinfo>

Seam allowance 1/2in.

Bonding line Bb

Bonding line Bc

SITE [https://dr-cos.info\(en\)](https://dr-cos.info(en)) [https://dr-cos.com\(jp\)](https://dr-cos.com(jp))  
MAIL [info@dr-cos.com](mailto:info@dr-cos.com)  
Twitter [@drcos\\_com](https://twitter.com/@drcos_com)  
pinterest <https://www.pinterest.jp/drcosinfo>

Cher Coat  
Fusible Interlining  
cut one  
Seam allowance 1/2in.

Bonding line CB

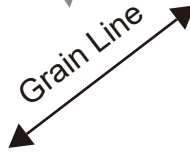
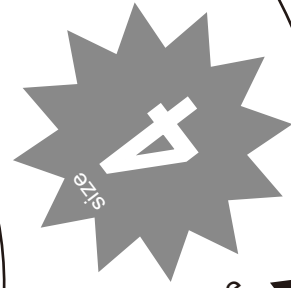


Bonding line Cb

Bonding line CB

C

F



**DRCOS**  
SITE <https://dr-cos.info/en> <https://dr-cos.com/tp>  
MAIL [info@dr-cos.com](mailto:info@dr-cos.com)  
Twitter <https://twitter.com/dracos>  
Pinterest <https://www.pinterest.jp/drcoasinfo>

Bonding line Cc

**DRCOS**  
SITE <https://dr-cos.info/en> <https://dr-cos.com/tp>  
MAIL [info@dr-cos.com](mailto:info@dr-cos.com)  
Twitter <https://twitter.com/dracos>  
Pinterest <https://www.pinterest.jp/drcoasinfo>

**Child**

Bonding line CC

**Idren's 4**

Bonding line CC

# Child

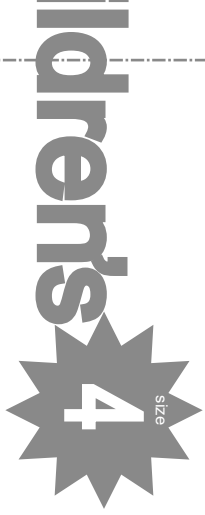
Chef Coat  
Facing  
Fusible interlining  
cut two



Grain Line

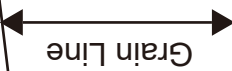
Seam allowance 1/2in.

Bonding line Dc



Chef Coat  
Collar  
cut two

Fusible interlining  
cut one



Grain Line

Seam allowance 1/2in.

Bonding line Db

Bonding line CD