

DRCOS

SITE [https://dr-cos.info\(en\)](https://dr-cos.info(en)) [https://dr-cos.com\(jp\)](https://dr-cos.com(jp))
MAIL info@dr-cos.com
Twitter https://twitter.com/@drcos_com
pinterest <https://www.pinterest.jp/drcosinfo>

Facing line

Bonding line Aa

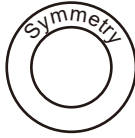


Bonding line AA



Bonding line AA

Children's



Chef Coat
Back Bodice
cut one



Bonding line AB



Bonding line Ba

Chef Coat

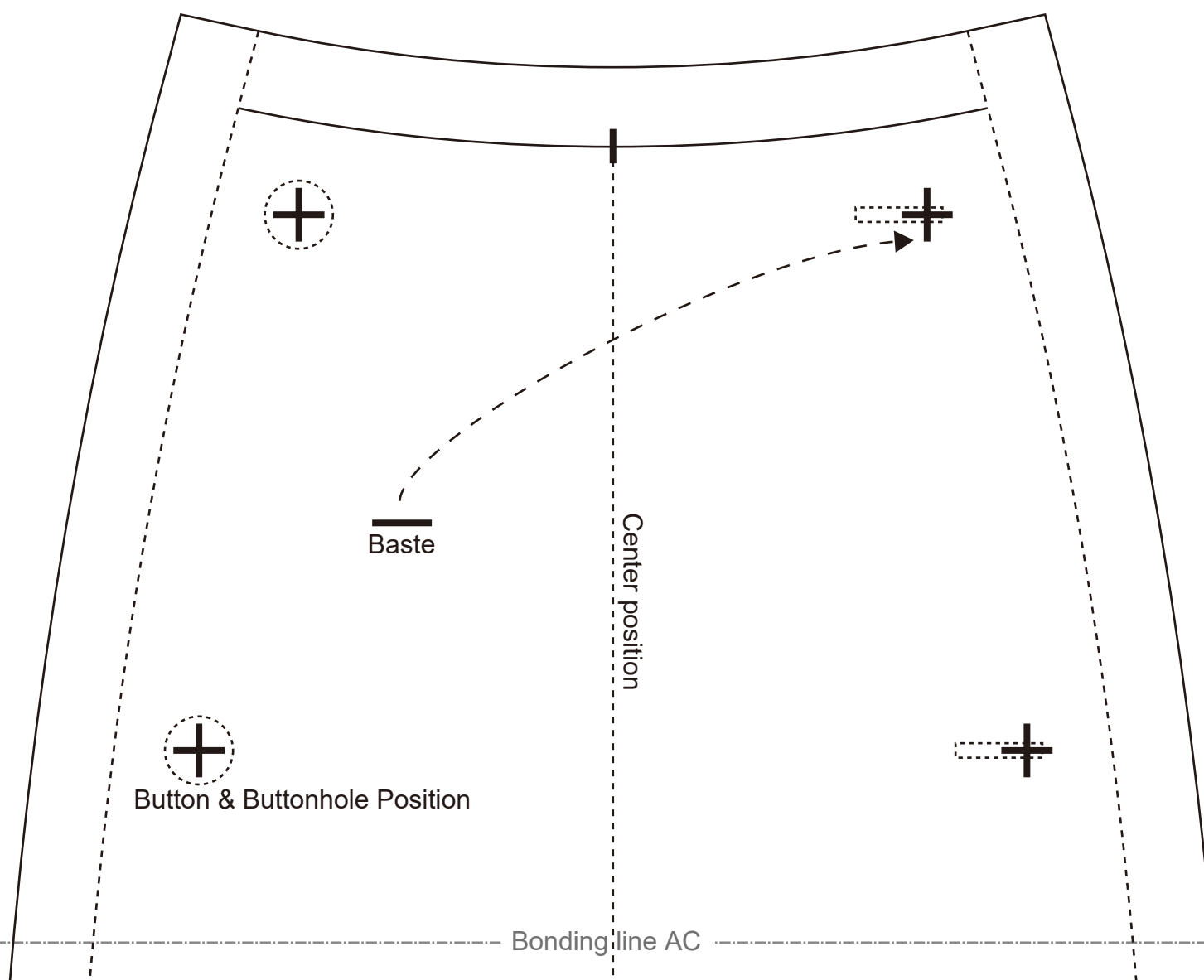
Bonding line AB

Seam allowance 1/2in.



Se

Bonding line Ca



Bonding line AC



Children's

Chef Coat
Bib
cut two



Grain Line

Bonding line AD

Bonding line Da

Bonding line AD

DRCOS

SITE <https://dr-cos.info/en> <https://dr-cos.com/jp>
MAIL info@dr-cos.com
Twitter https://twitter.com/drcos_com
pinterest <https://www.pinterest.jp/drcosinfo>

Seam allowance 1/2in.

Bonding line Ea

Seam allowance 1/2in.

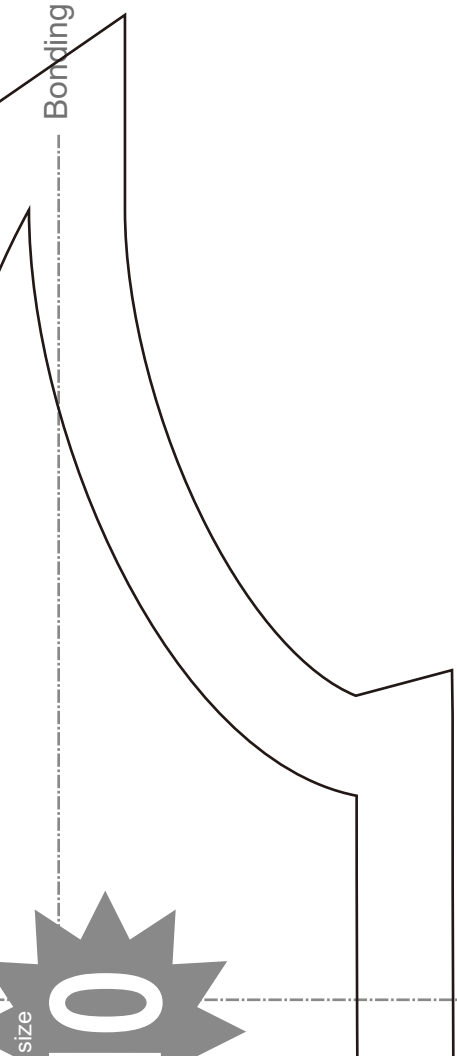
Grain Line

FU

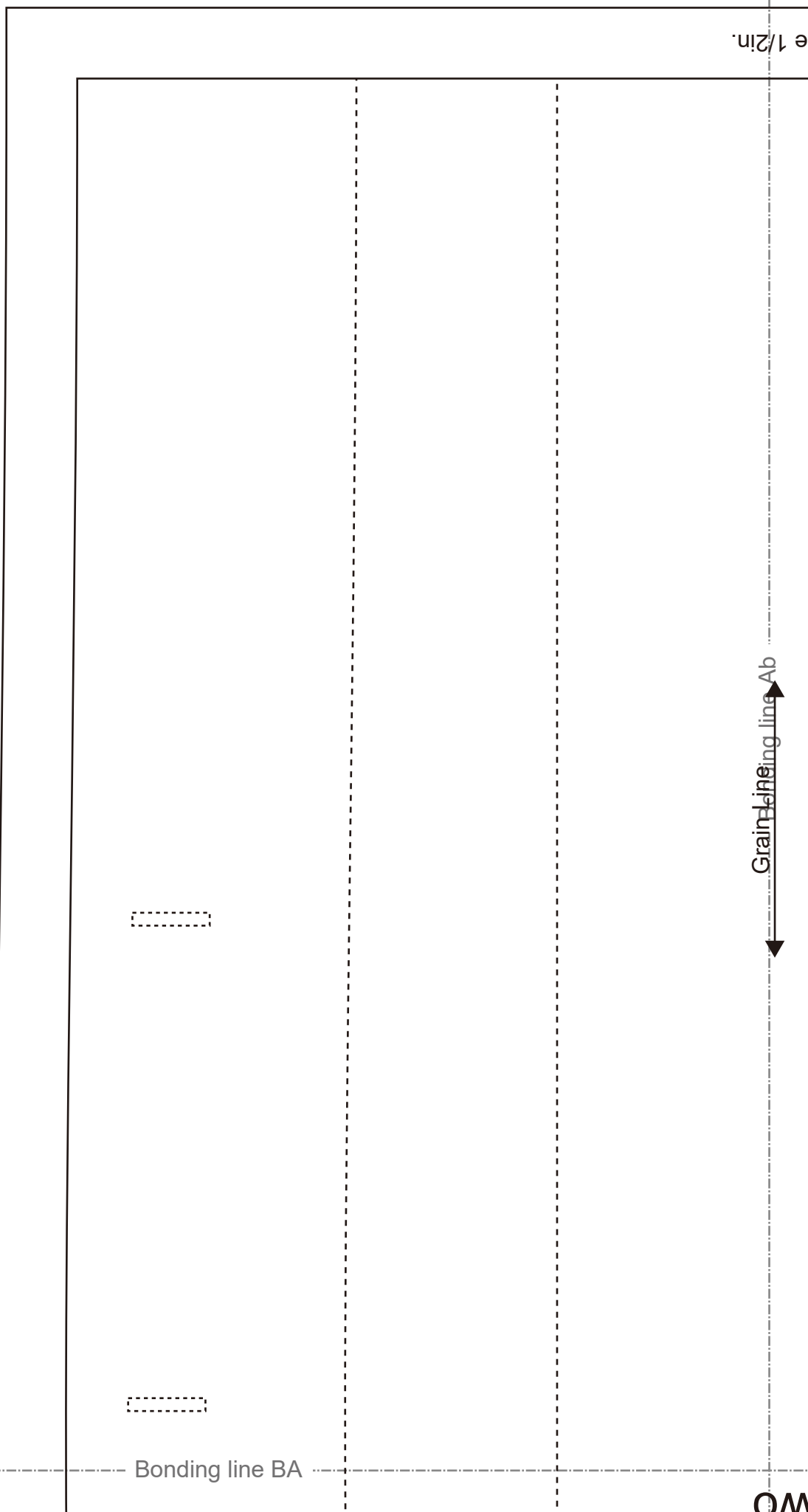


size

Bonding line Aa



Bonding line BA



e 1/2 in.

Grain lining line Ab



OM

Children's 10

Chef Coat
Back Bodice(side)
cut two

Grain Line

Bonding line Ba

Bonding line BA

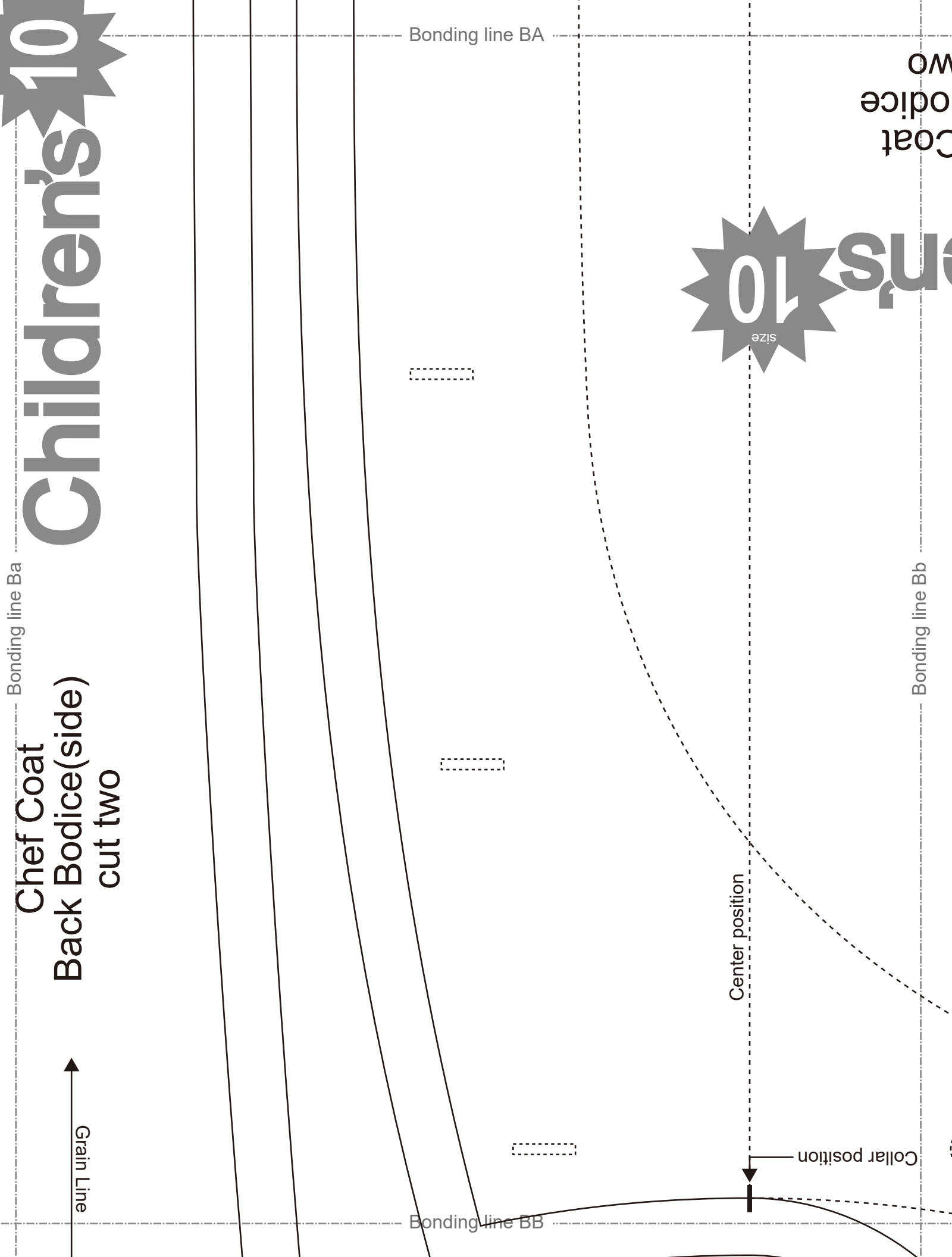
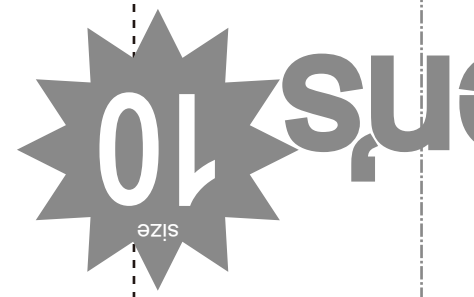
Bonding line BB

Center position

Collar position

Bonding line Bb

Coat
odice
WO



line



Bonding line BB

DRCOS

SITE <https://dr-cos.info/en> <https://dr-cos.com/jp>
MAIL info@dr-cos.com
Twitter https://twitter.com/@drcos_com
pinterest <https://www.pinterest.jp/drcosinfo>

Seam allowance 1/2in.

Bonding line Ca

Bonding line Cb

DRCOS

SITE <https://dr-cos.info/en> <https://dr-cos.com/jp>
MAIL info@dr-cos.com
Twitter https://twitter.com/@drcos_com
pinterest <https://www.pinterest.jp/drcosinfo>

Front

Children's

size

10

Bonding line BC

Bonding line BC

Chef Coat
Sleeve
cut two

Bonding line Da

Bonding line Db



Grain Line

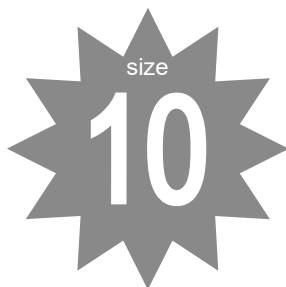
Bonding line BD

Bonding line BD

Seam allowance 1/2in.

Bonding line Ea

Grain Line



Chef Coat Facing
Fusible interlining
cut one

Bonding line Eb

Seam allowance 1/2in.

Chef Coat Facing
Fusible interlining
cut two

Children's



DRCOS
SITE <https://drcos.info/en> <https://drcos.com/jp>
MAIL info@drcos.com
Twitter https://twitter.com/drcos_com
Pinterest <https://www.pinterest.jp/drcosinfo>

Bonding line Ac

Bib line

Bonding line CA

Grain line Ab

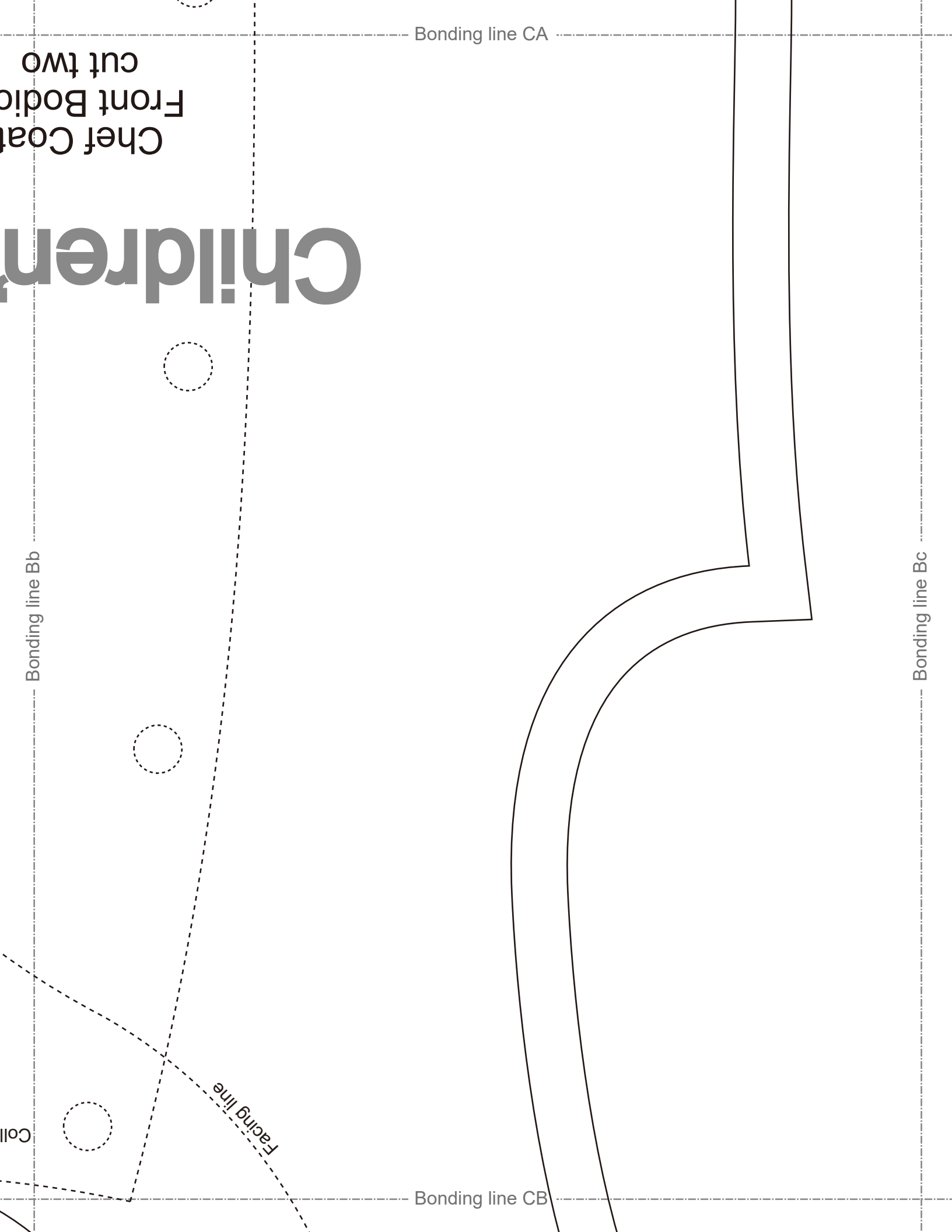


Seam allowance 1/2in.

CUT (W)

Children's

Chef Coat
Front Bodice
cut two



Bonding line CB

Bonding line Cb



Side

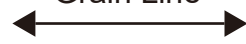
Children

Bonding line Cc

Back



Grain Line



Bonding line CC

9

Bonding line Db

Bonding line CC

Bonding line CD

DRCOS
<https://dr-cos.info/en> <https://dr-cos.com/jp>
info@dr-cos.com
https://twitter.com/dr-cos_com
<https://www.pinterest.jp/dr-cosinfo>



Chef Coat Fusible interlining
Collar cut one
cut two

Seam allowance 1/2in.

Bonding line Dc

Bonding line CD

DRCOS
SITE <https://dr-cos.info/>
MAIL info@dr-cos.com
Twitter <https://twitter.com/dr-cos>
Pinterest <https://www.pinterest.jp/dr-cos/>

DRCOS
SITE <https://dr-cos.info/>
MAIL info@dr-cos.com
Twitter <https://twitter.com/dr-cos>
Pinterest <https://www.pinterest.jp/dr-cos/>

Bonding line Eb

DRCOS
SITE <https://dr-cos.info/>
MAIL info@dr-cos.com
Twitter <https://twitter.com/dr-cos>
Pinterest <https://www.pinterest.jp/dr-cos/>

Bonding line Ec

size

10

Seam allowance 1/2in.

Stitch

Chef Coat
Cuff
cut four
Fusible interlining
cut two



Side

Bonding line Cd



DRCOS

SITE [https://dr-cos.info\(en\)](https://dr-cos.info(en)) [https://dr-cos.com\(jp\)](https://dr-cos.com(jp))
MAIL info@dr-cos.com
Twitter https://twitter.com/drcos_com
pinterest <https://www.pinterest.jp/drcosinfo>