

on bias

SITE <https://dr-cos.info/en> (<https://dr-cos.com/pt>)
MAIL info@dr-cos.com
Twitter <https://twitter.com/dr-cos.com>
Pinterest <https://www.pinterest.jp/dr-cos/info>

DRCOS

Bonding line Aa

Bonding line AA

Bonding line AA

o
e
ouse

Bonding line Ba



Back

Bonding line AB

Interfacing cut two

Bonding line AB



Bonding line Ca



Tack

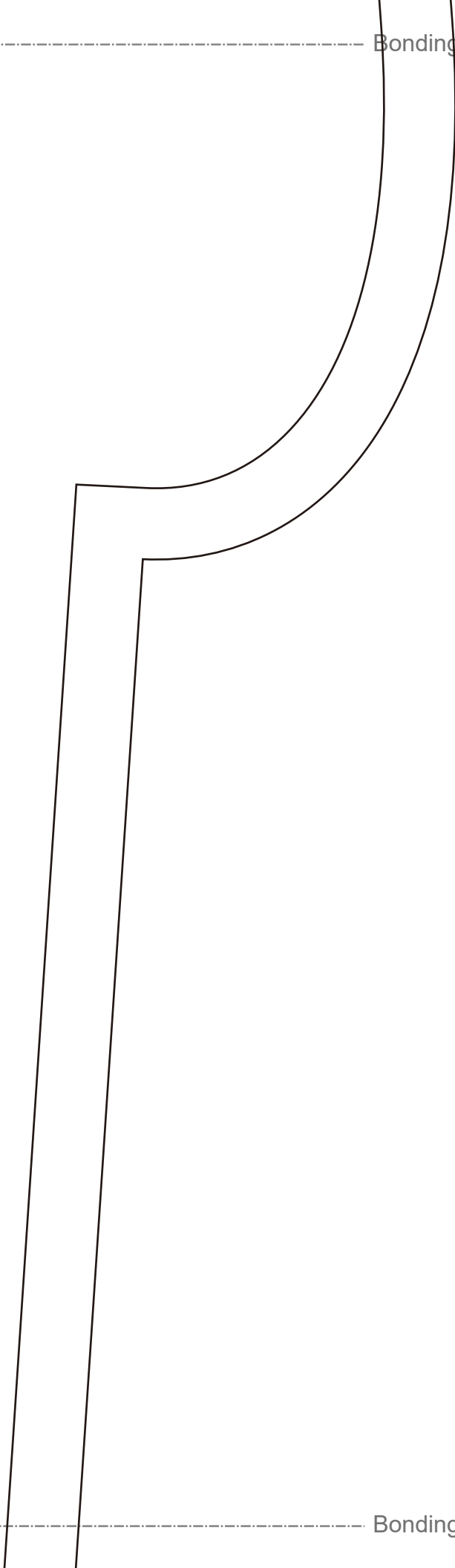
Bend line

Bonding line AC

Bonding line AC

Bonding line AD

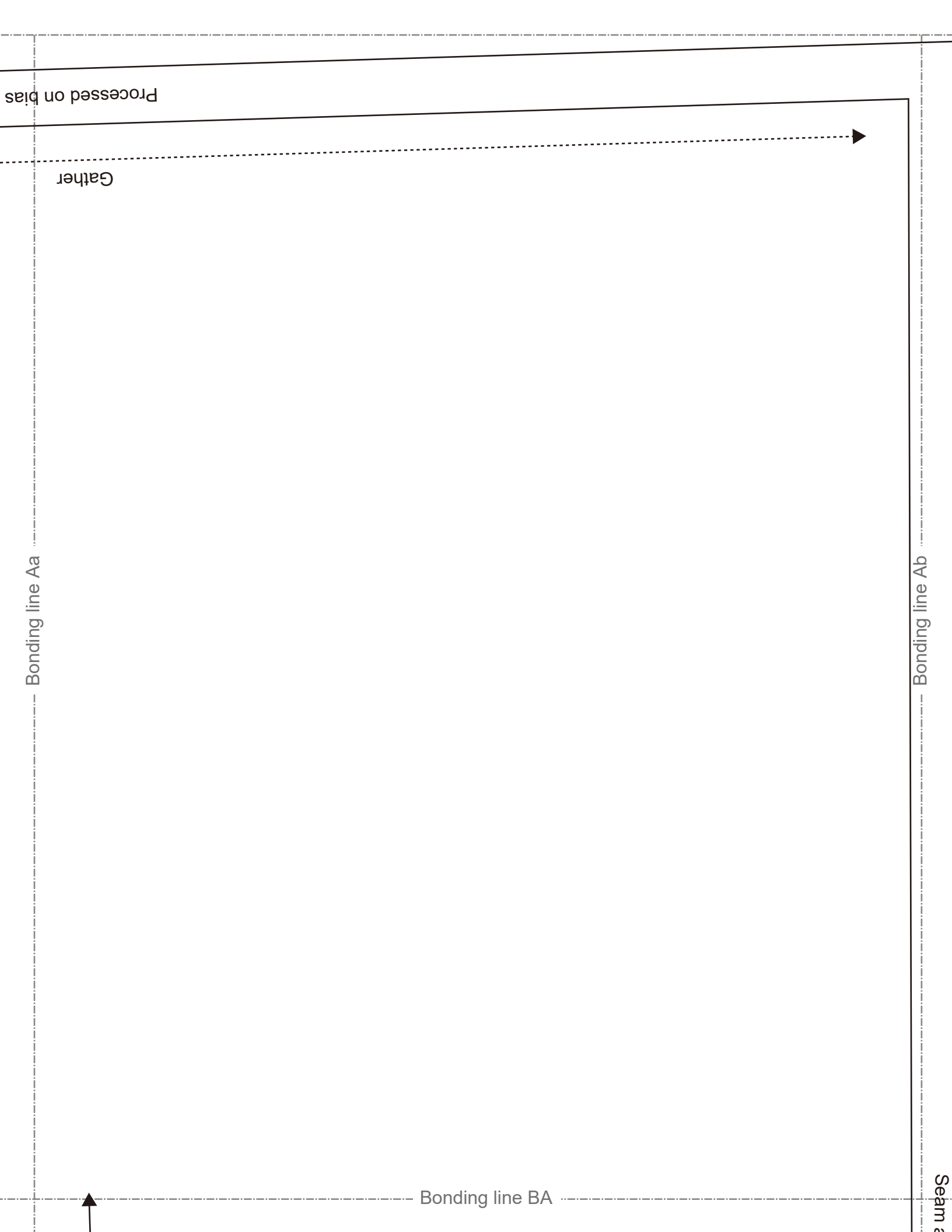
Bonding line Da



Bonding line AD

Bonding line Ea





Processed on bias

Gather

Bonding line Aa

Bonding line BA

Bonding line Ab

Seam 2

Seam allowance 1/2in.

Bonding line BA

Grain Line

Balloonblouse
Sleeve
cut two

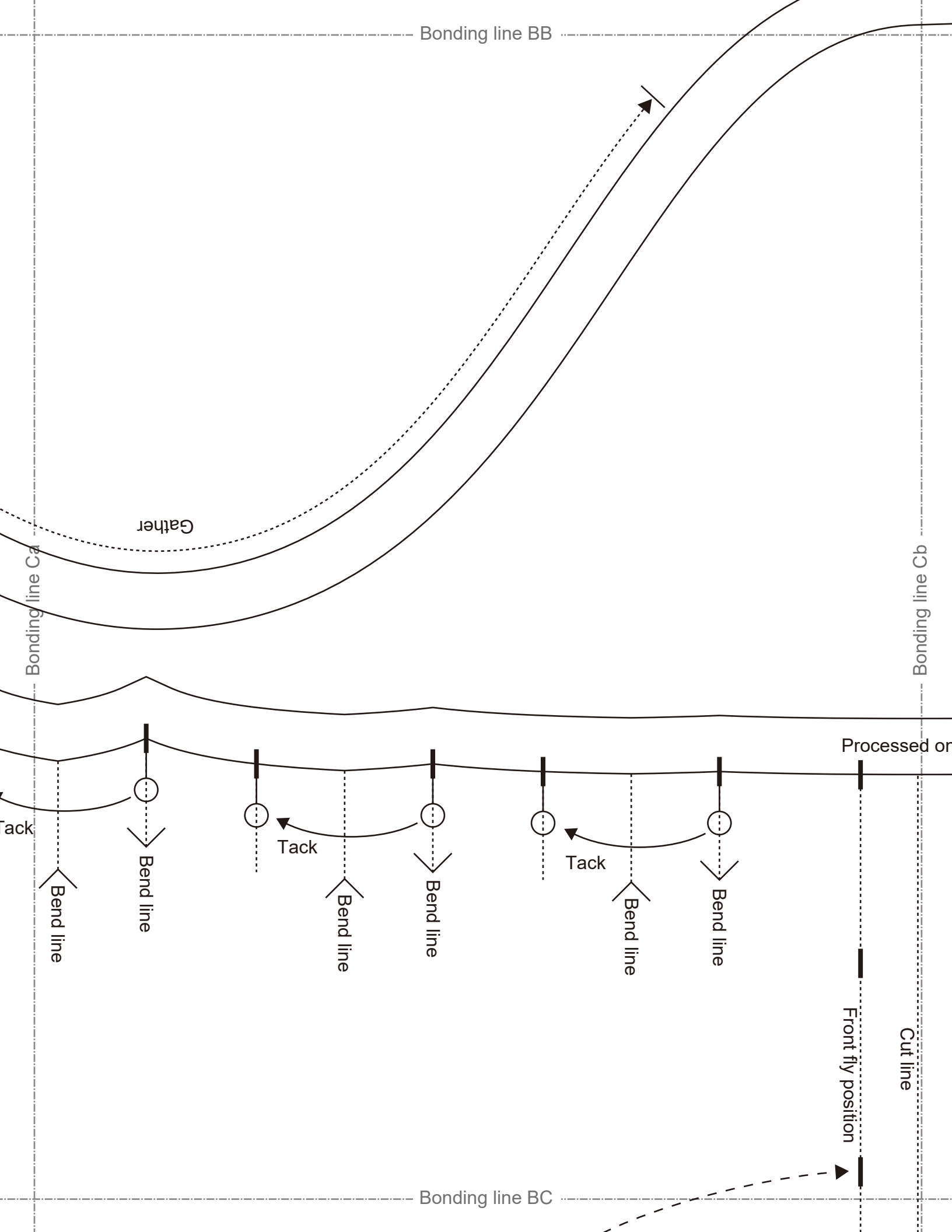
Bonding line Ba

LADIES

Bonding line Bb

Front

Bonding line BB



Bonding line BC

Baste

Bonding line Da

Bonding line Db

LADIE

Balloonb
Back Bo
cut on

Bonding line BD

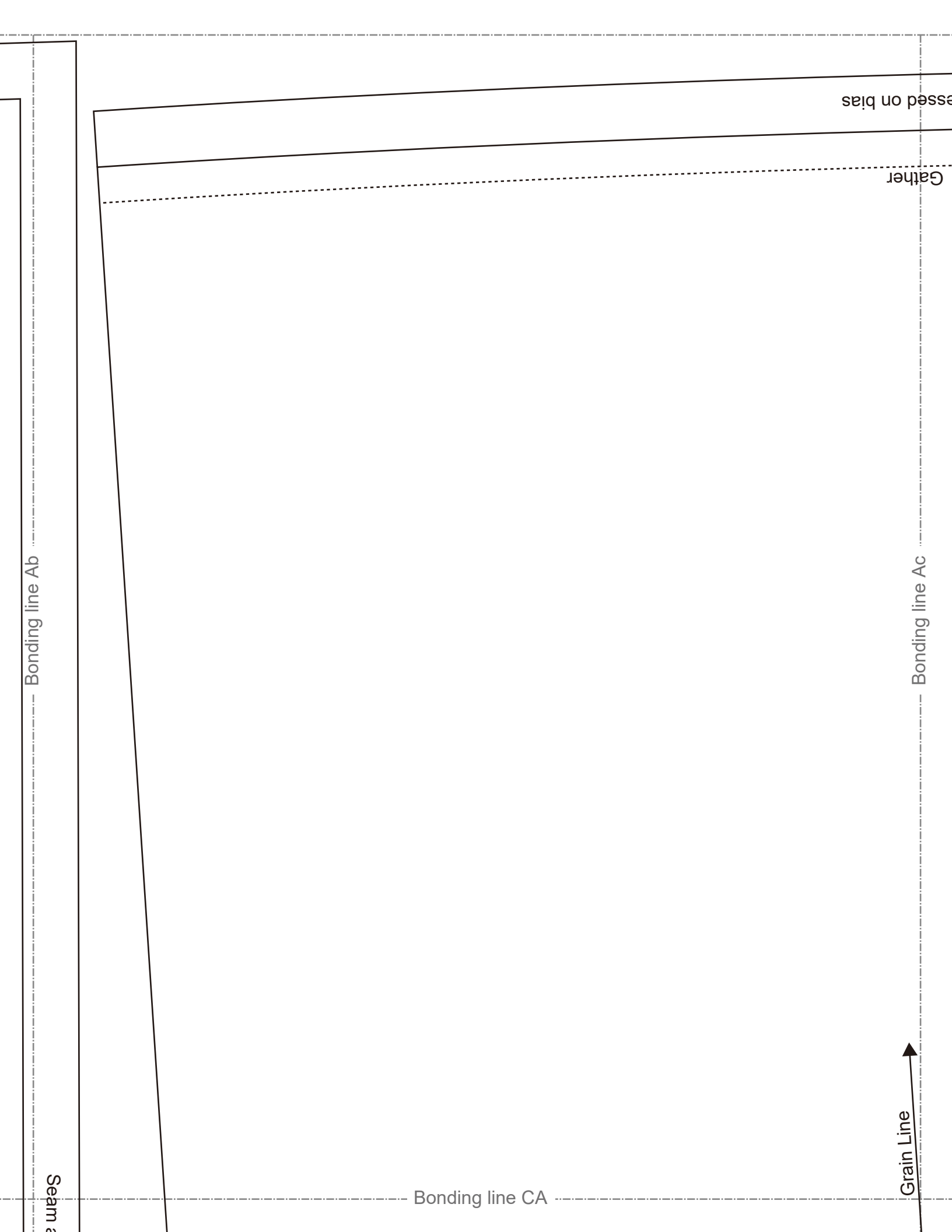
Bonding line BD

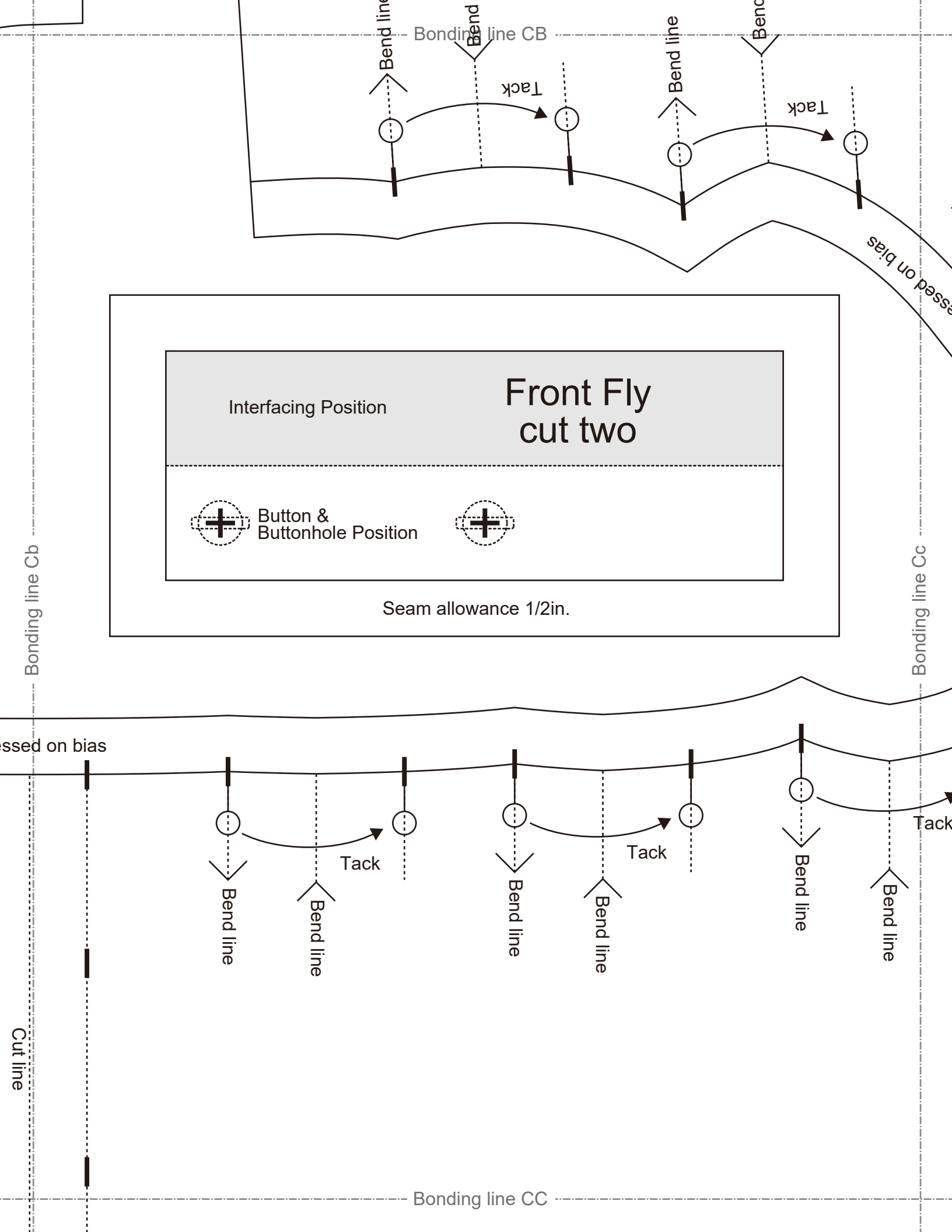
Bonding line Ea

Bonding line Eb

Gather

Processed on 1

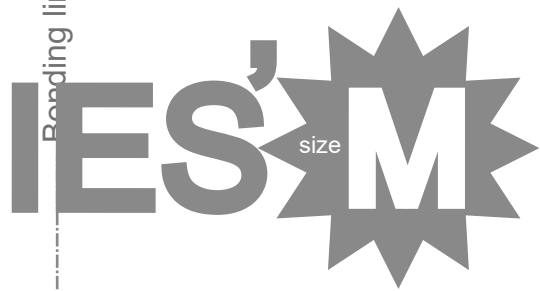




Bonding line CC

Bonding line Db

Bonding line Dc



onblouse
k Bodice
ut one

Bonding line CD

Bonding line CD

Bonding line Eb

Bonding line Ec

ather

sed on bias

Processed on

Gather

DRCOS
 SITE <https://dr-cos.info/en> [https://dr-cos.com\(dp\)](https://dr-cos.com(dp))
 MAIL info@dr-cos.com
 Twitter https://twitter.com/drcos_com
 Pinterest <https://www.pinterest.jp/drcosinfo>

Bonding line Ac

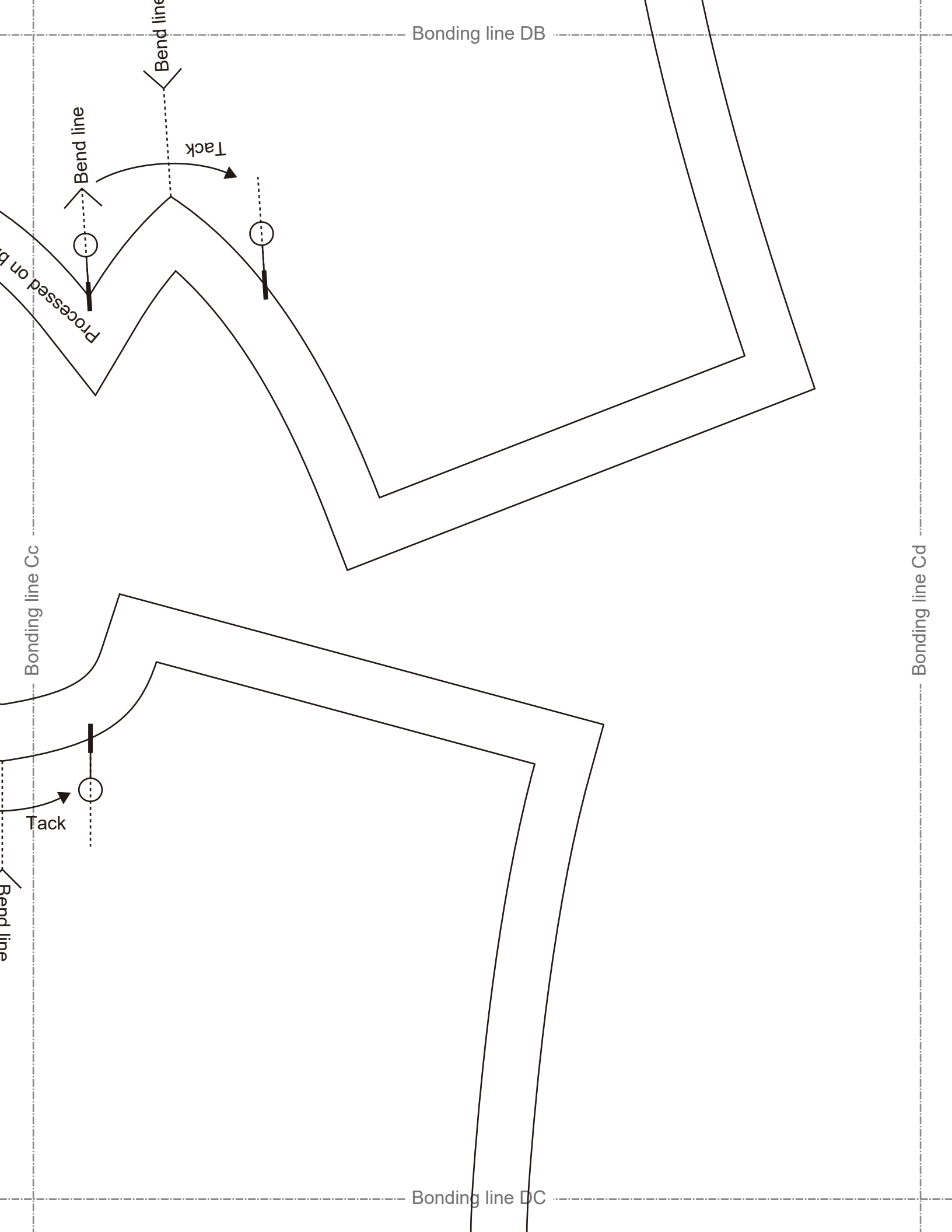
Bonding line Ad

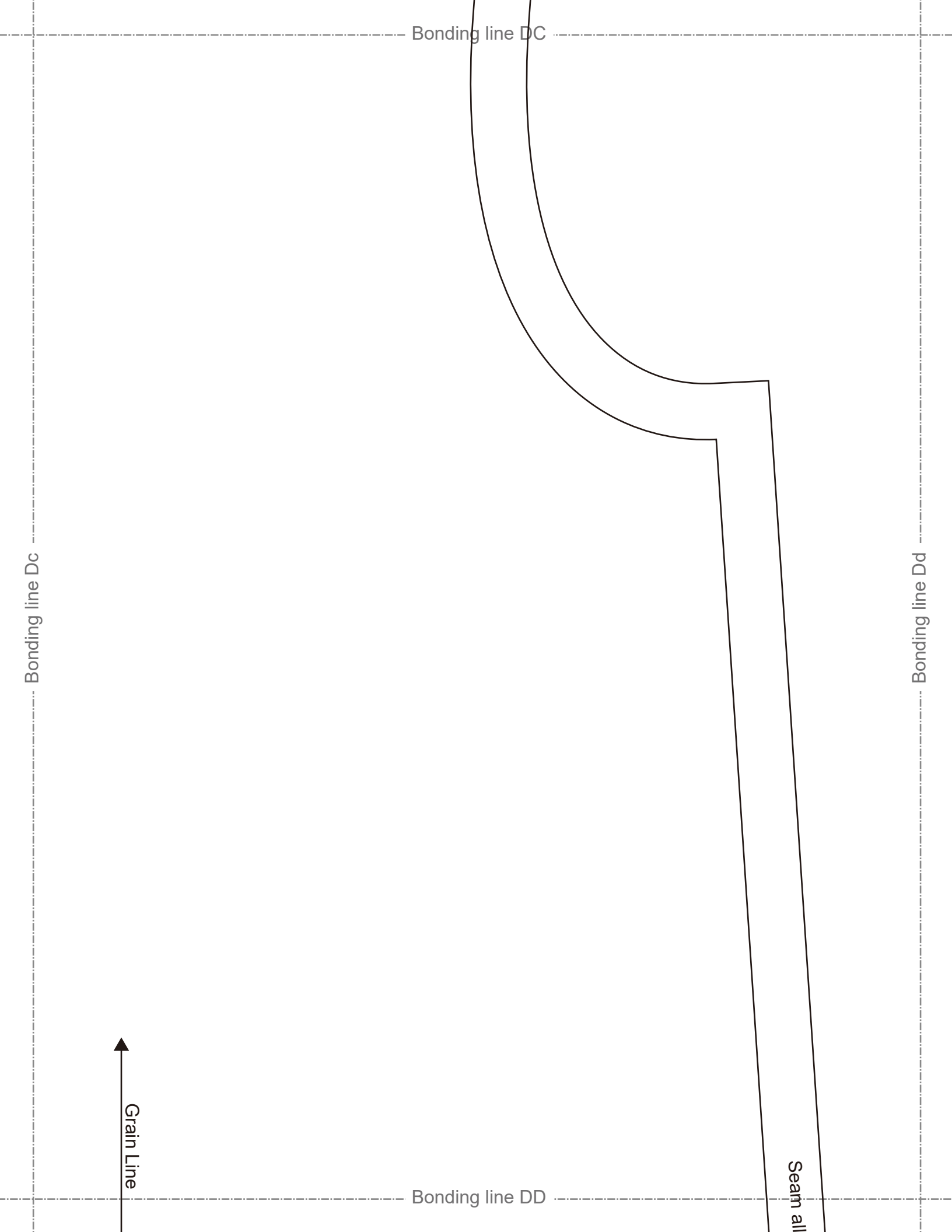
Seam allowance 1/2in.

Grain Line

Bonding line DA







Bonding line DC

Bonding line Dc

Bonding line Dd

Grain Line

Bonding line DD

Seam all

line



Bonding line DD

Seam allowance 1/2in.

Bonding line Ec

Bonding line Ed

DRCOS

SITE <https://dr-cos.info/en> <https://dr-cos.com/jp>
MAIL info@dr-cos.com
Twitter https://twitter.com/@drcos_com
pinterest <https://www.pinterest.jp/drcosinfo>

