

DRCOS
SITE <https://drcos.info/en> [https://drcos.com\(dp\)](https://drcos.com(dp))
MAIL info@drcos.com
Twitter https://twitter.com/drcos_com
Pinterest <https://www.pinterest.jp/drcosinfo>



Seam allowance 1cm

Bonding line AA

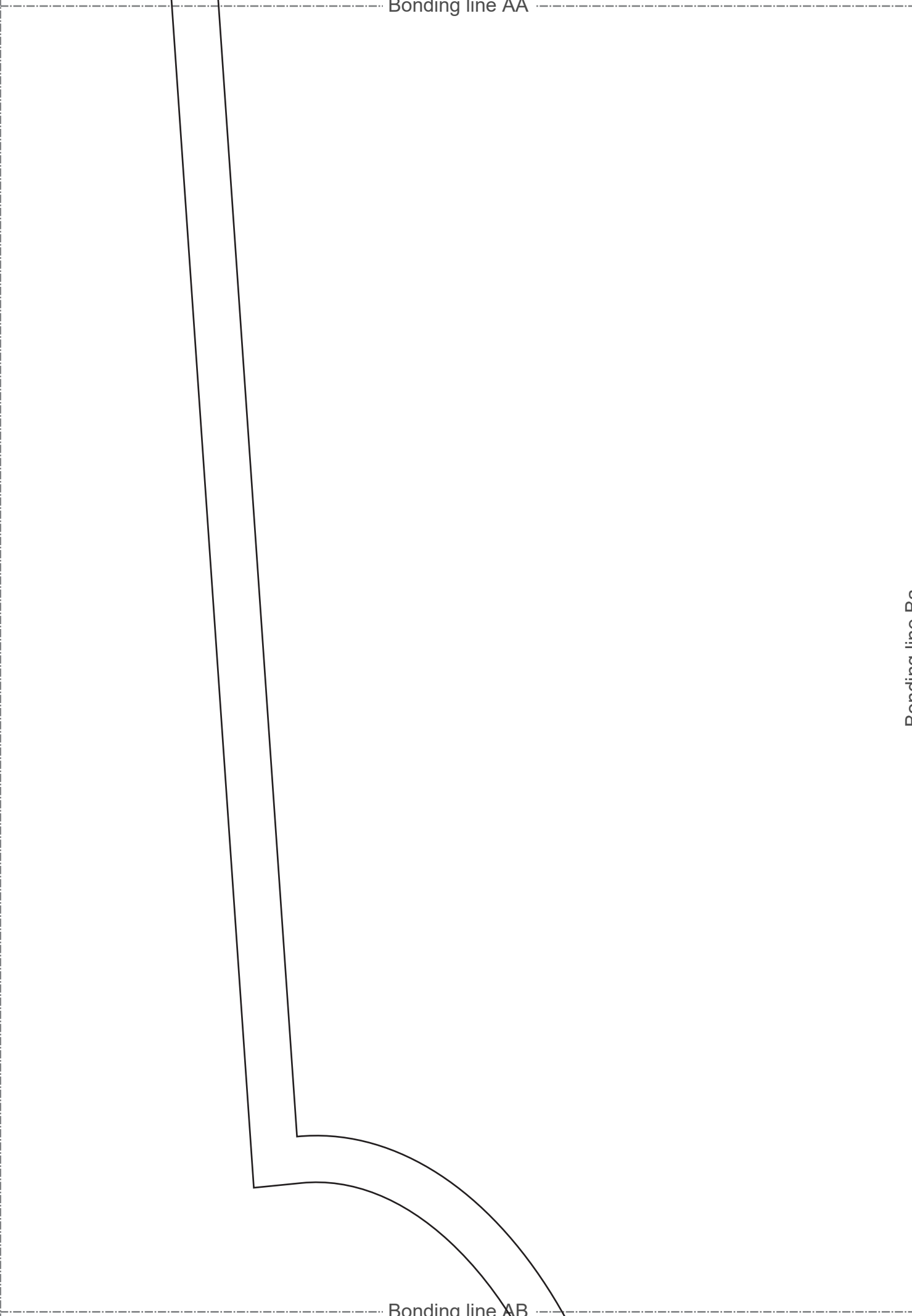
Bonding line Aa

Se

Bonding line AA

Bonding line Ba

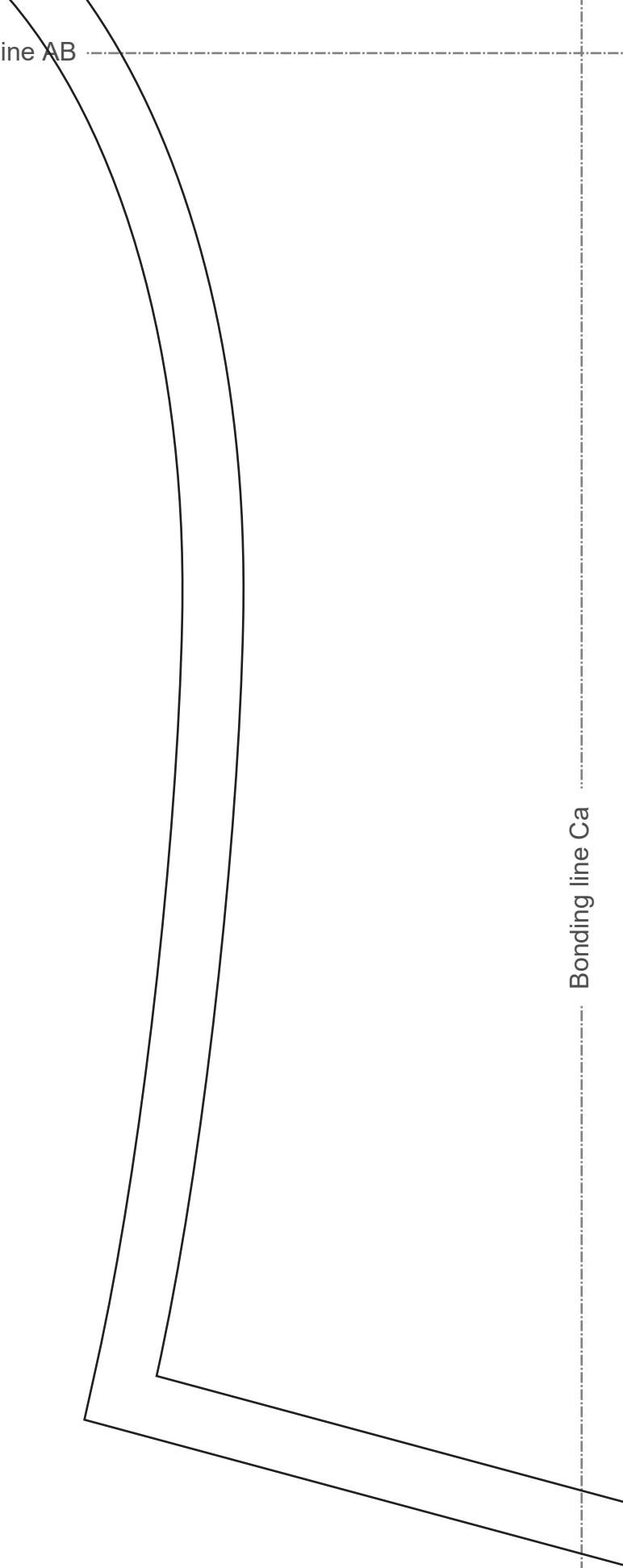
Bonding line AB



Bonding line AB

Bonding line Ca

Bonding line AC



How to make bias tape.
Please refer to this page
<https://www.dr-cos.info/kt-biastape.html>



How to sew bias tape.
Please refer to this page
<https://www.dr-cos.info/kt-biastape3.html>



Gather



Processed on bia

Bonding line AD

Bonding line Ea

Bonding line AE

ed on bias

ther





line

Bonding line Aa

Bonding line Ab

Bonding line BA

Bonding line BA

Bonding line Ba

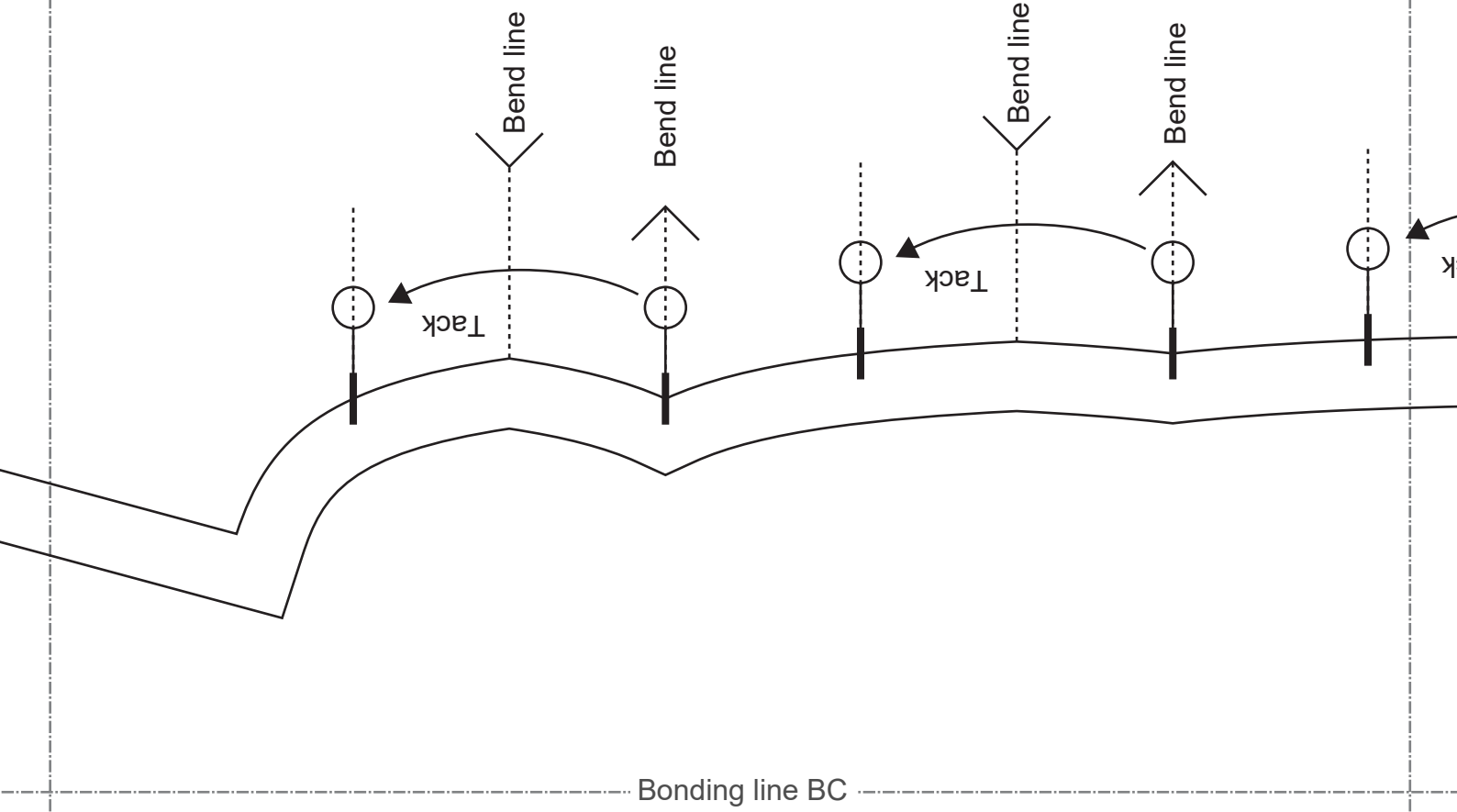
Bonding line Bb

Bonding line BB

Bonding line BB

Bonding line Ca

Bonding line Cb



Bonding line BC

Seam allowance 1cm

Bonding line Da

Bonding line Db



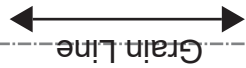
Grain Line

Bonding line BD

Sleeve
cut tw

Sleeve
cut two

Bonding line BD



Grain Line

Bonding line Ea

Bonding line Eb

Bonding line BE

Gather



<https://www.dr-cos.info/kt-gather.html>

Please refer to this page

How to make gathers using a sewing machine



Please check here for the required fabric length images, cutting reference images, and the step-by-step sewing instructions. <https://dr-cos.info/tp-balloonblouse.html>

Bonding line Ab

Bonding line Ac

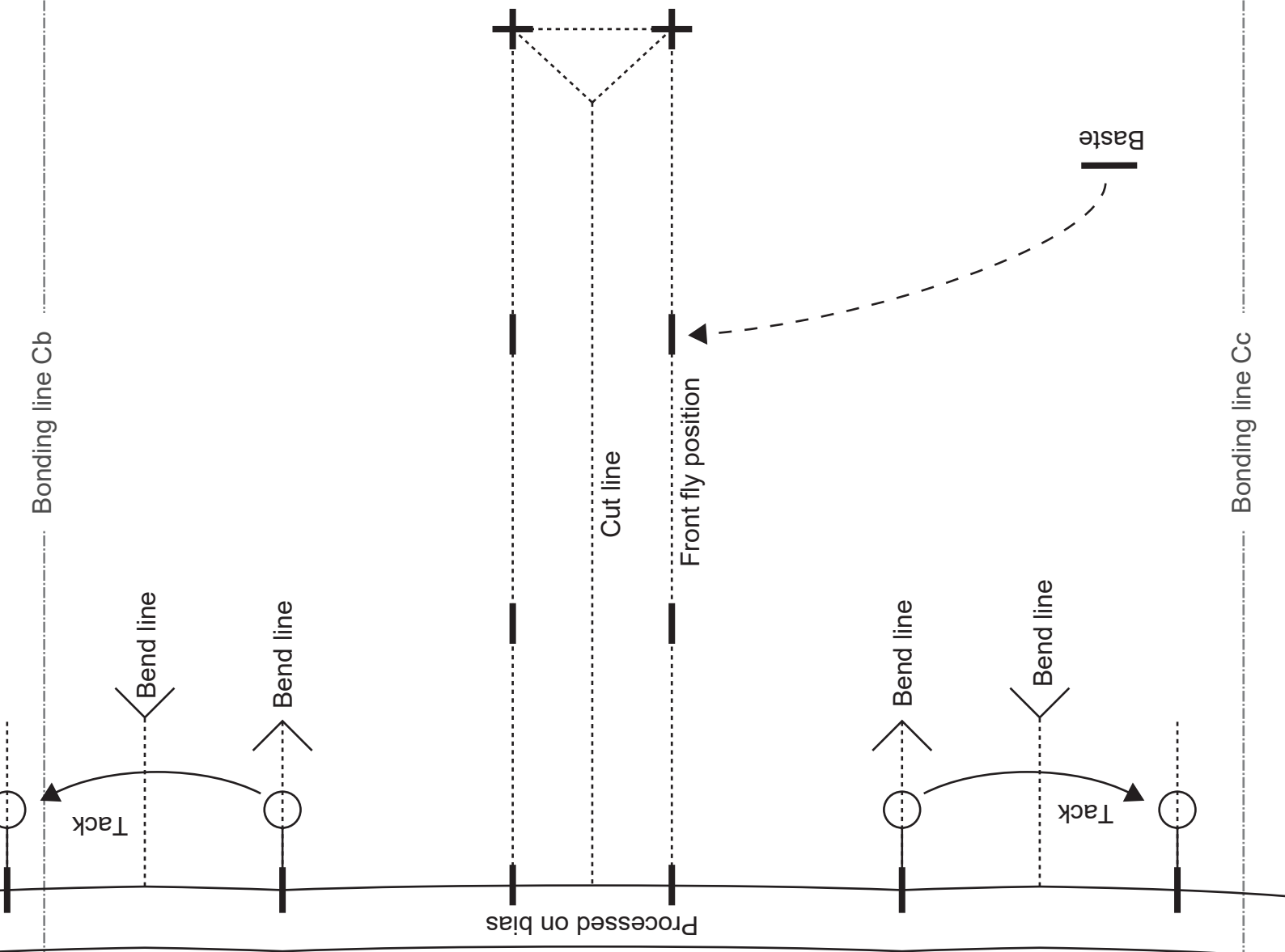
Balloonblouse
Back Bodice
cut one



Bonding line CB

Bonding line Cb

Bonding line Cc



Bonding line CC

Bonding line CC

Front

Bonding line Dc

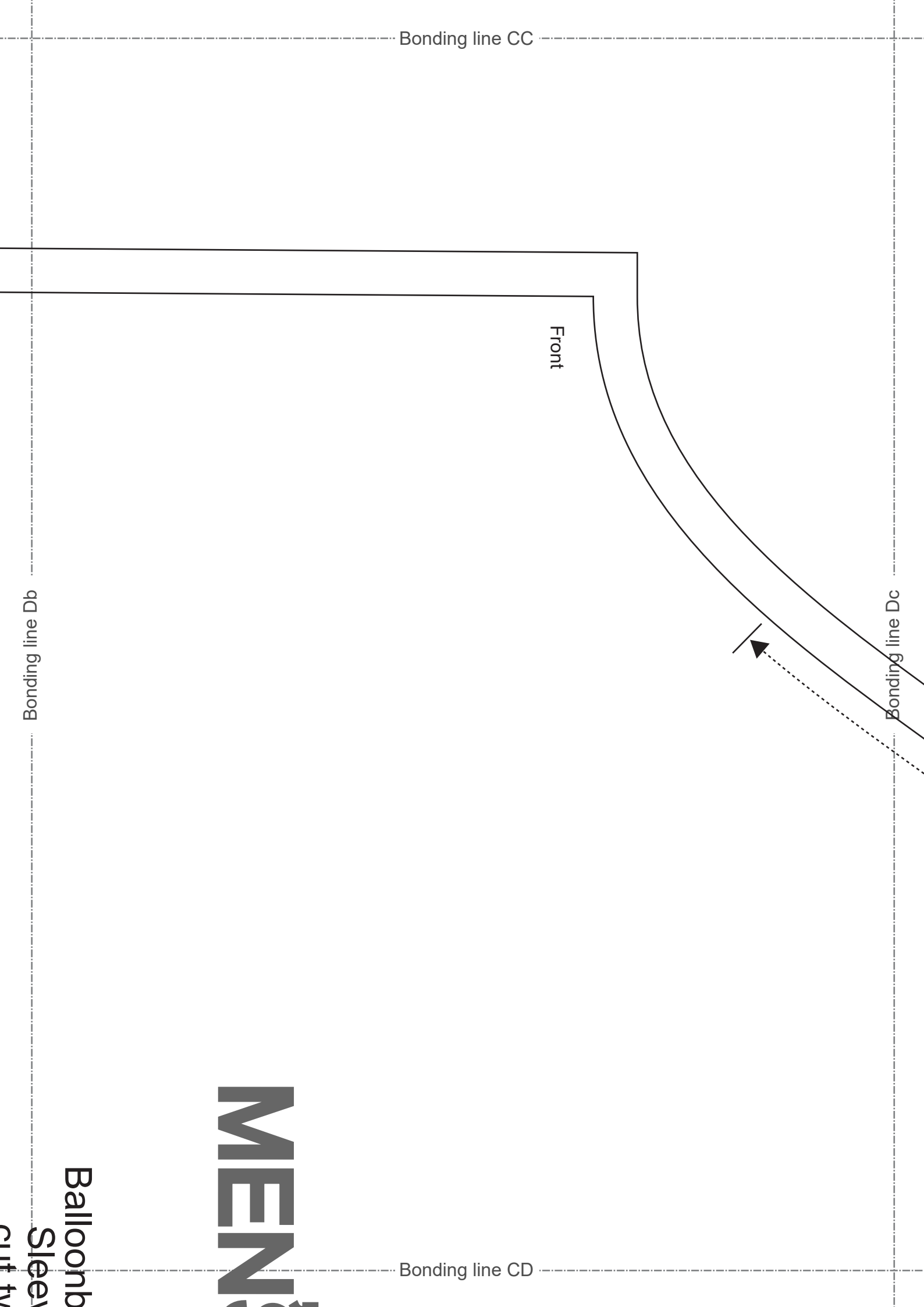
Bonding line Db

Bonding line CD

MEN'S

**Ballonb
Sleeve**

cut tw



comblouse
Sleeve



Bonding line CD

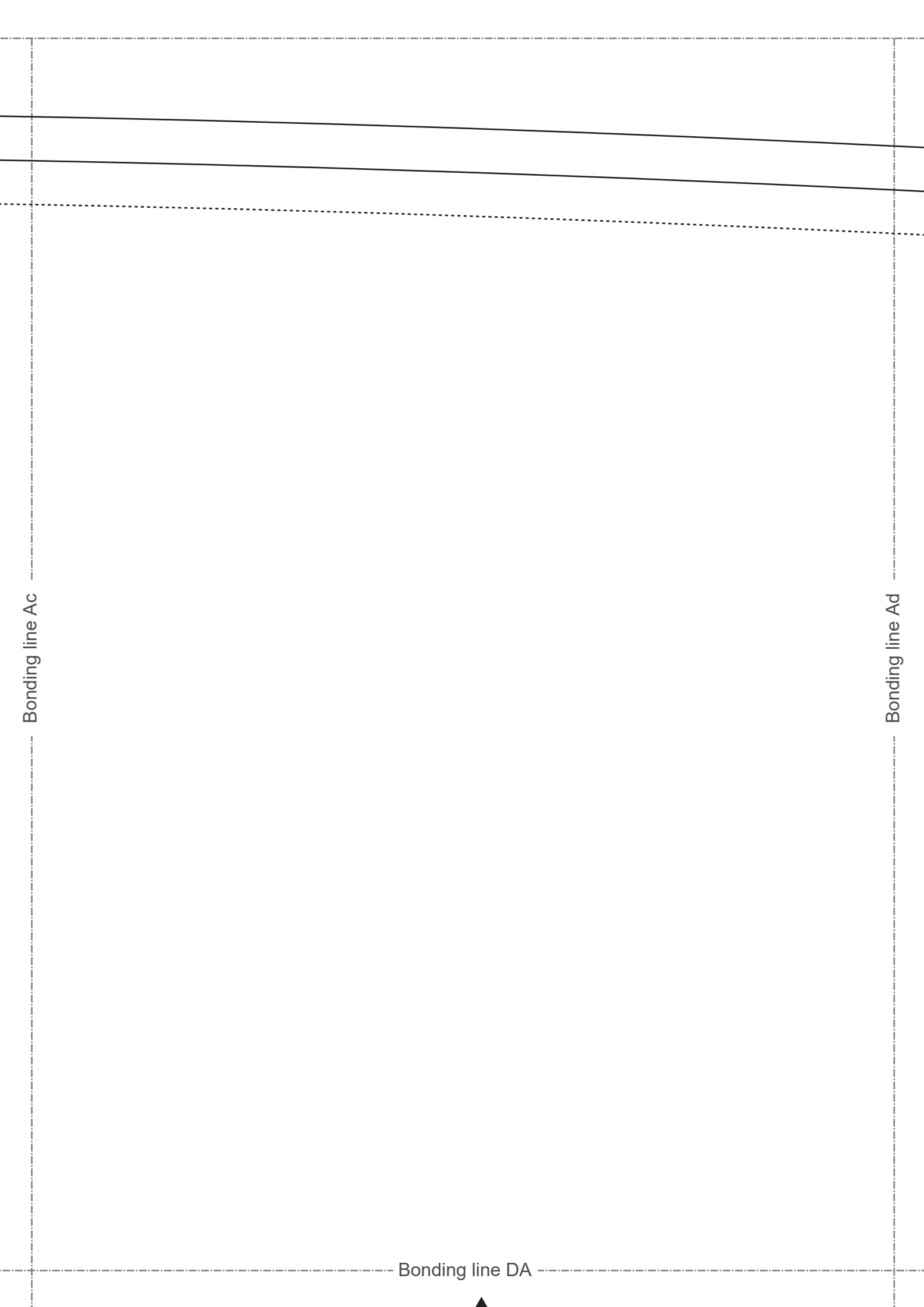
Bonding line Eb

Back

Bonding line CE

Bonding line Ec





Bonding line DA



Bonding line DB

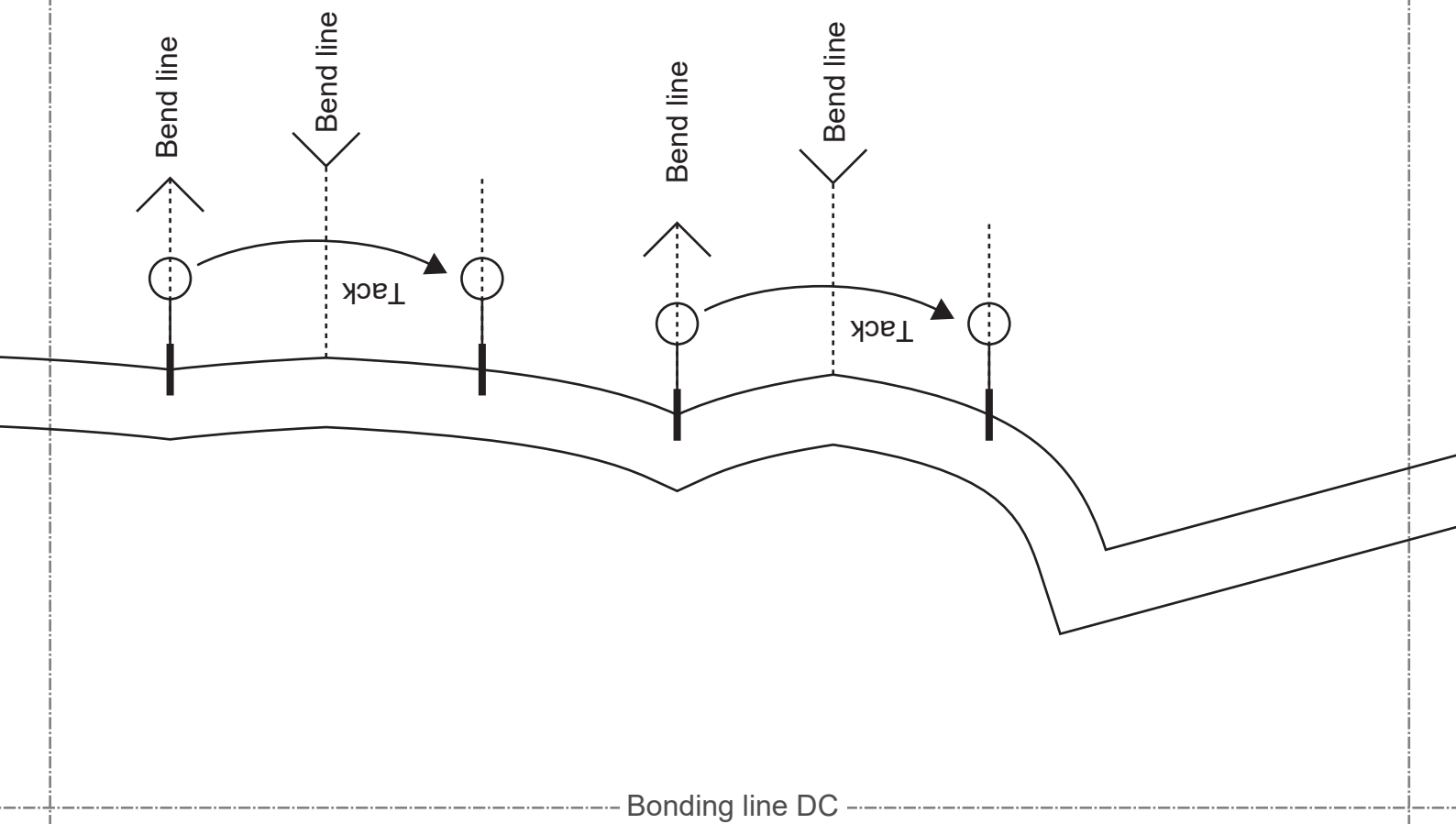
Bonding line Bc

Bonding line Bd

Bonding line DB

Bonding line Cc

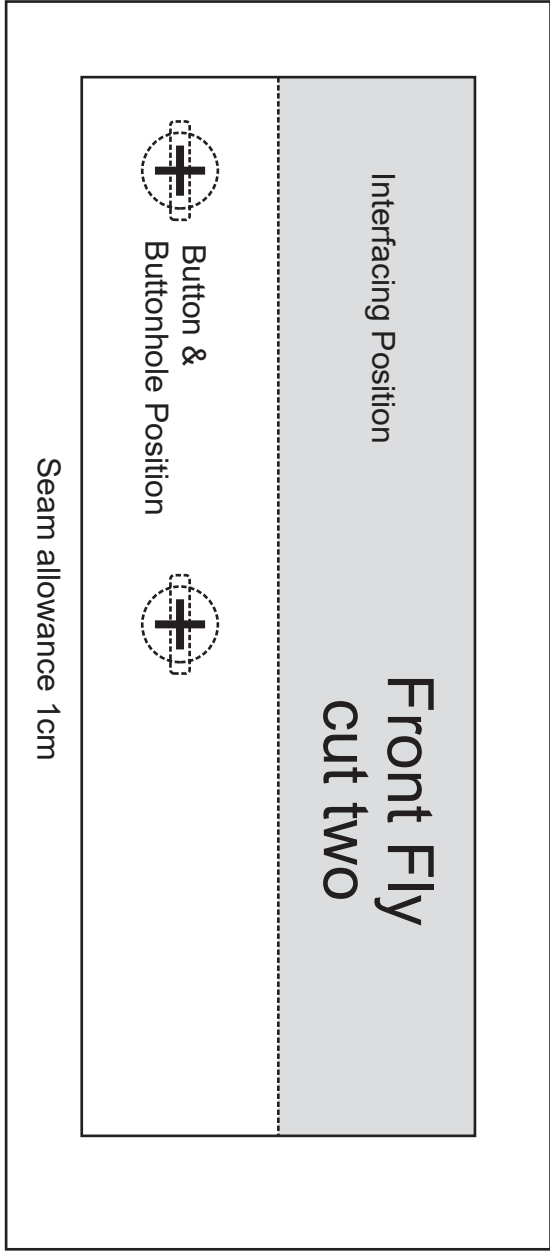
Bonding line Cd



Bonding line DC

Bonding line DC

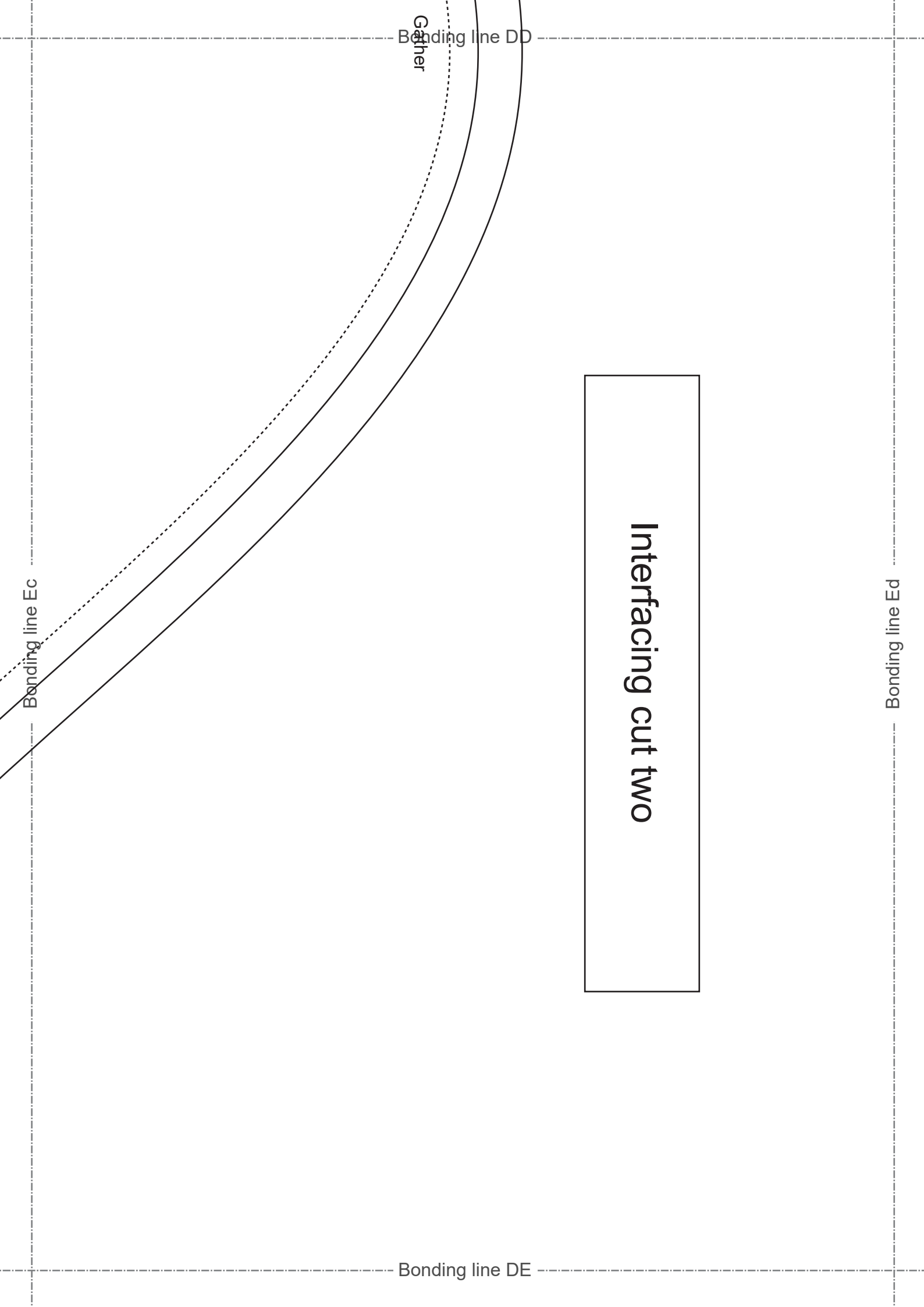
Bonding line Dd

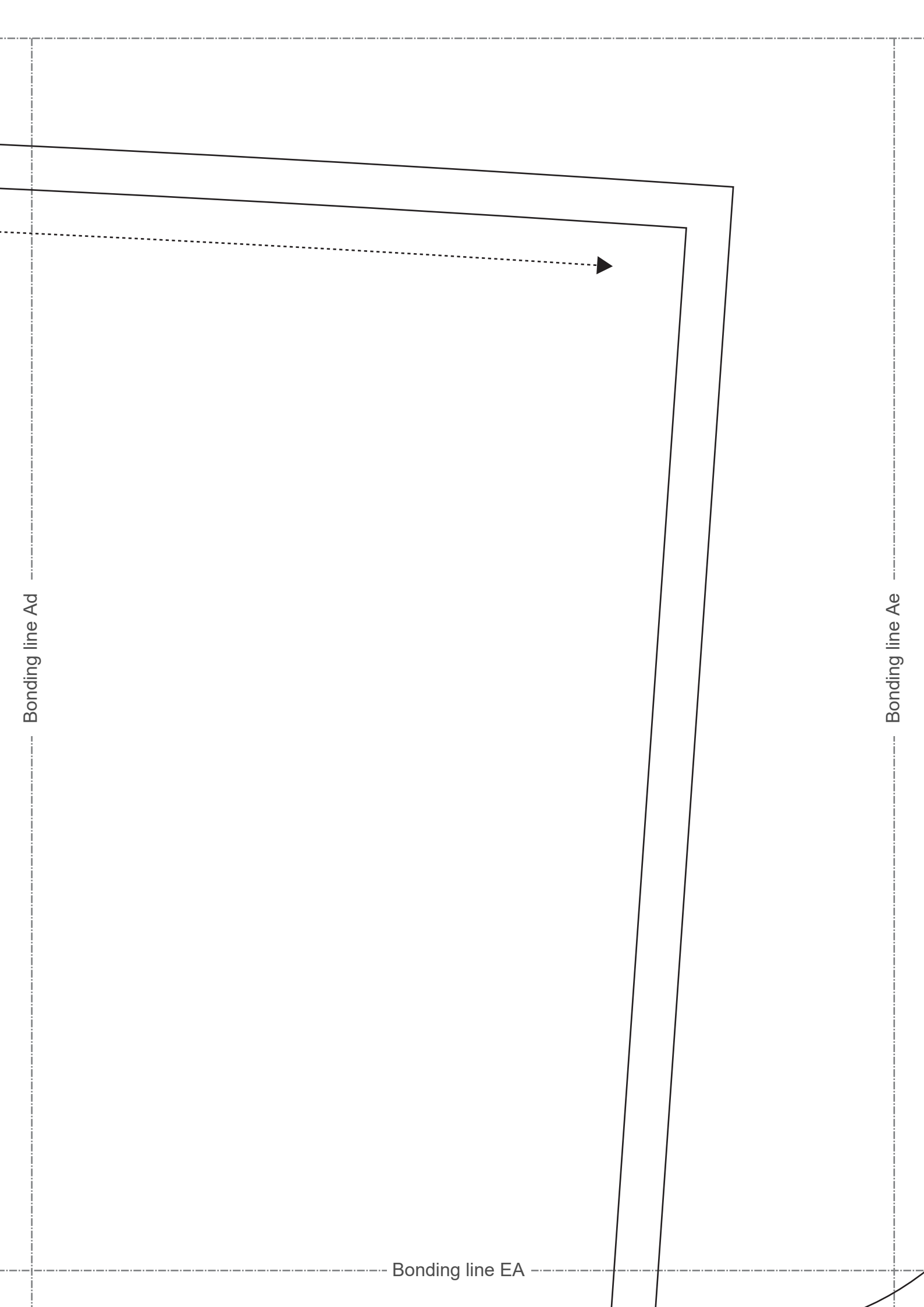


Bonding line Dc

Bonding line DD

Gather





Bonding line Ad

Bonding line EA

Bonding line Ae

Bonding line Bd

Bonding line EA

Bonding line Be

Bonding line EB

Seam allowance 1cm

erge/overlock (sewing machine & overlock sewing machine).
fer to this page



www.df-cos.info/kt-serge.html

Bonding line Cd

Bonding line EB

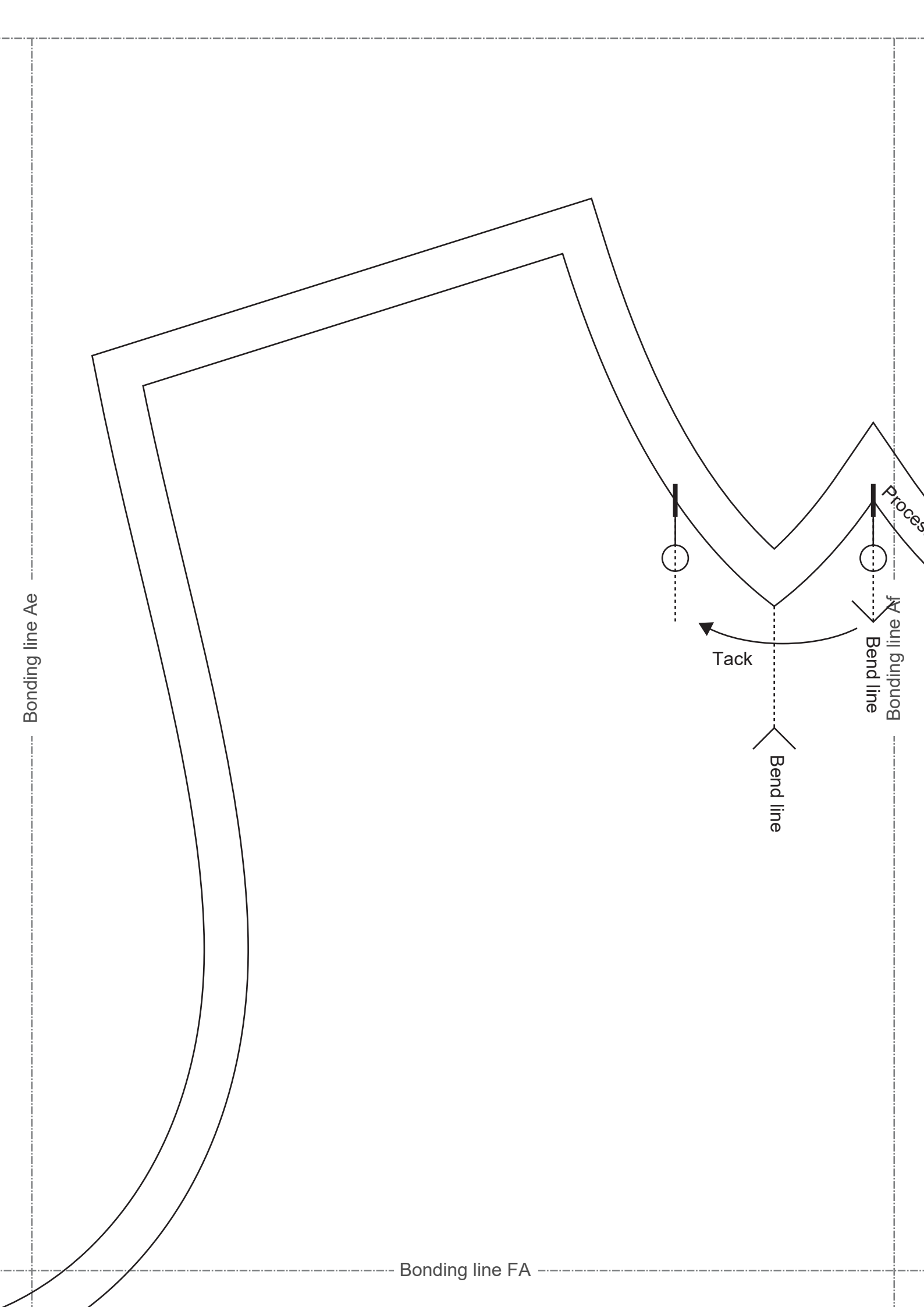
How to Serge/ove
Please refer to this
<https://www.dr-cos>

Bonding line Ce

DRCOS

SITE [https://dr-cos.info\(en\)](https://dr-cos.info(en)) [https://dr-cos.com\(jp\)](https://dr-cos.com(jp))
MAIL info@dr-cos.com
Twitter [@drcos_com](https://twitter.com/@drcos_com)
pinterest <https://www.pinterest.jp/drcosinfo>

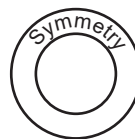
Bonding line EC



Bonding line FA

Bonding line Be

MEN'S  size



Balloonblouse
Front Bodice
cut one

Bonding line Bf

Bonding line FB

Bonding line FB



Bonding line Ce

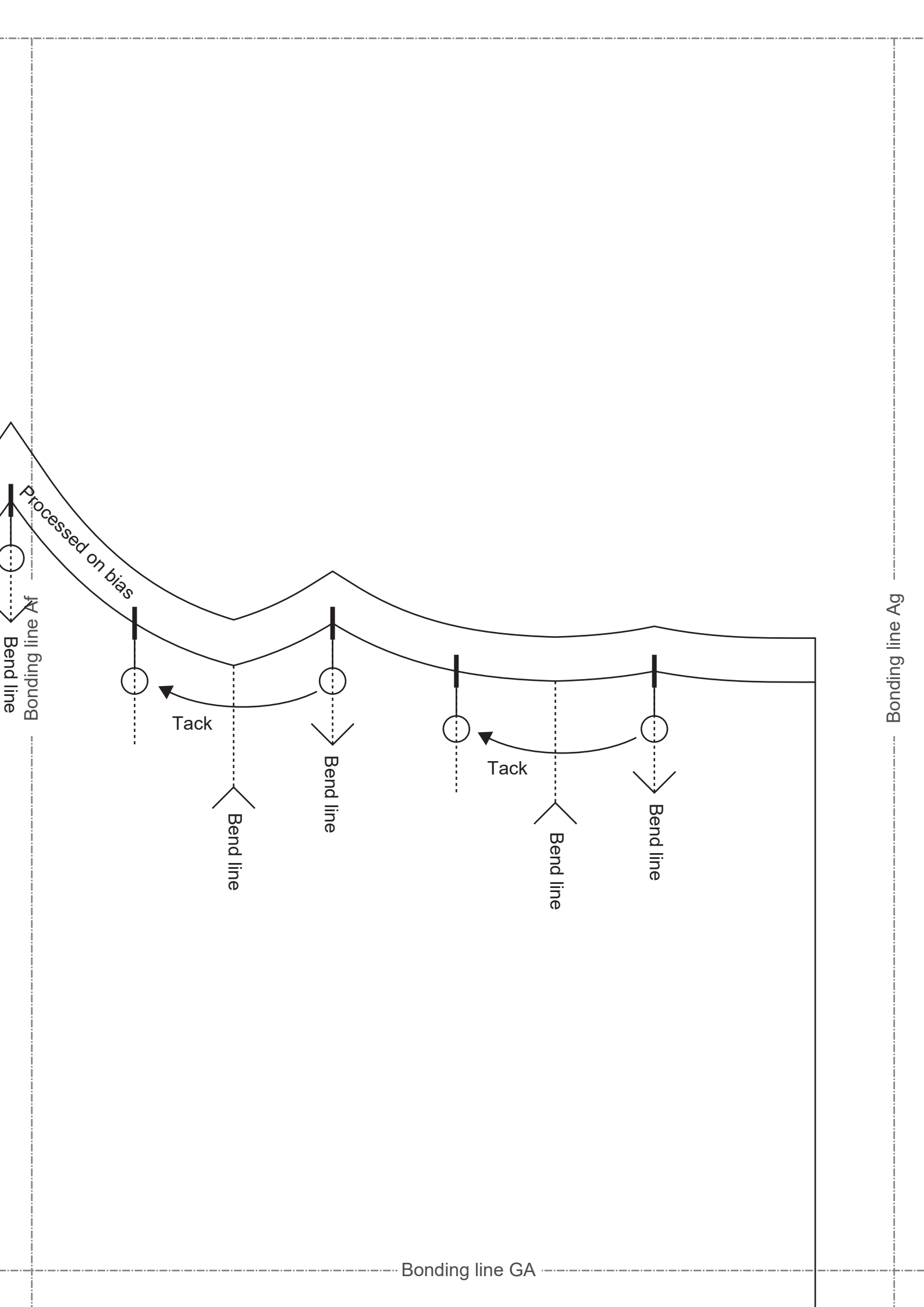
Bonding line Cf

S
.com.jp
o

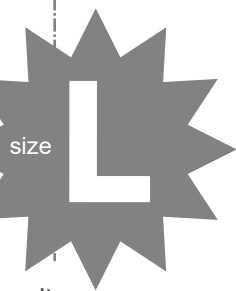
Gather

Processed on bias

Bonding line FC



Bonding line GA



size

use
ice

Bonding line Bf

What is "Grainline"" cut on fold"?
Please refer to this page
<https://www.dr-cos.info/kt-grainline.html>



Bonding line GB

Bonding line Bg

Bonding line GB

Bonding line Cf

Bonding line Cg

Bonding line GC

