

**DRCOS**  
SITE <https://drcos.info/en> <https://drcos.com/jp>  
MAIL [info@drcos.com](mailto:info@drcos.com)  
Twitter [https://twitter.com/drcos\\_com](https://twitter.com/drcos_com)  
Pinterest <https://www.pinterest.jp/drcosinfo>

Seam allowance 1cm

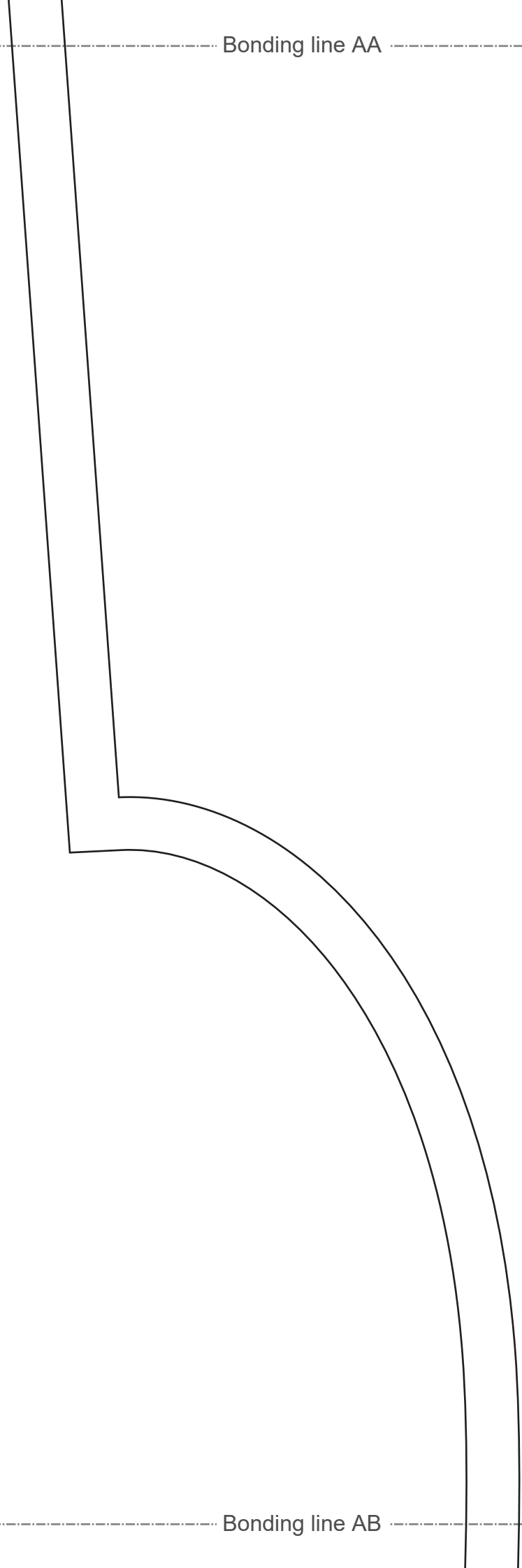
Bonding line AA

Bonding line Aa

Bonding line AA

Bonding line AB

Bonding line Ba



Bonding line AB

Bonding line Ca

How to Serge  
Please refer to th  
<https://www.dr-co>



**DRCOS**  
SITE <https://dr-cos.info/en> | <https://dr-cos.com/it/p>  
MAIL [info@dr-cos.com](mailto:info@dr-cos.com)  
Twitter <https://twitter.com/drcos>  
Pinterest <https://www.pinterest.jp/drcosinfo>

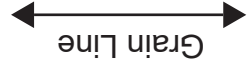


Bonding line AC

Bonding line AC

Processed on bias

Gather



Bonding line Da

Bonding line AD

Bonding line Aa

Bonding line BA

Bonding line Ab



wing machine.  
.html

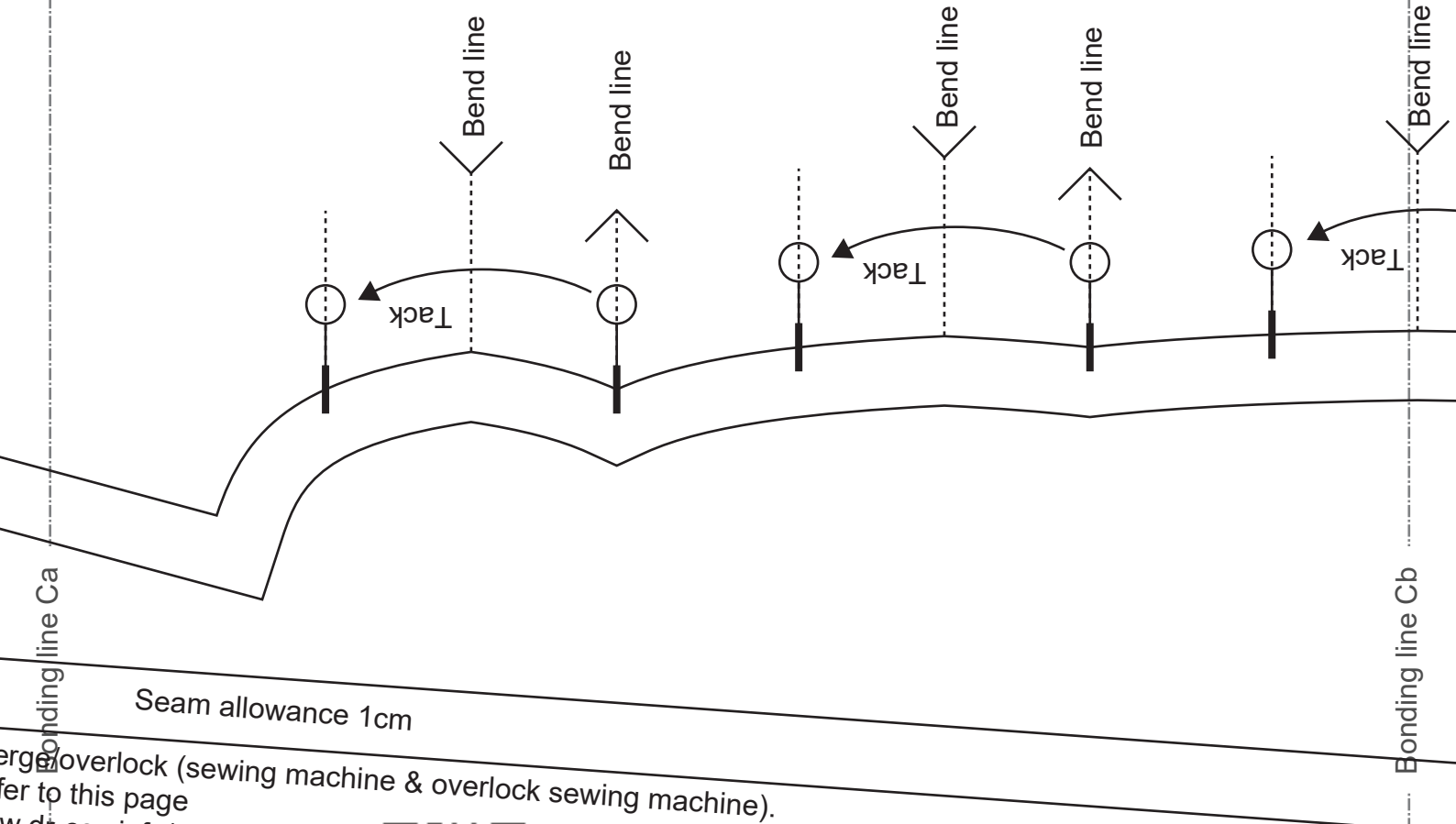
Bonding line BA

Bonding line Ba

Bonding line Bb

Bonding line BB

Bonding line BB



Bonding line Ca

Bonding line Cb

Seam allowance 1cm

erge/overlock (sewing machine & overlock sewing machine).  
fer to this page

[www.dr-cos.info/kt-serge.html](http://www.dr-cos.info/kt-serge.html)



Bonding line BC

Bonding line BC



**Balloonblouse**  
**Front Bodice**  
cut one



Bonding line Da

Bonding line Db

What is "Grainline""cut on fold"?  
Please refer to this page  
<https://www.dr-cos.info/kt-grainline.html>



Bonding line BD

Gather

How to make gathers using a sewing machine  
Please refer to this page  
<https://www.dr-cos.info/kt-gather.html>



Please check here for the  
required fabric length images,  
cutting reference images,  
and the step-by-step sewing instructions.  
<https://dr-cos.info/tp-ballonblouse.html>

Bonding line Ab

Bonding line Ac

Bonding line CA

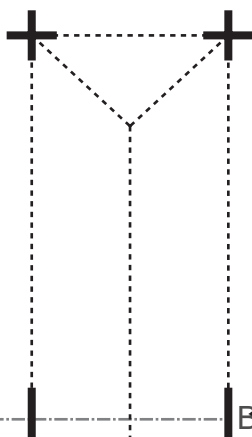
# Balloonblouse Back Bodice

cut one



Bonding line Bb

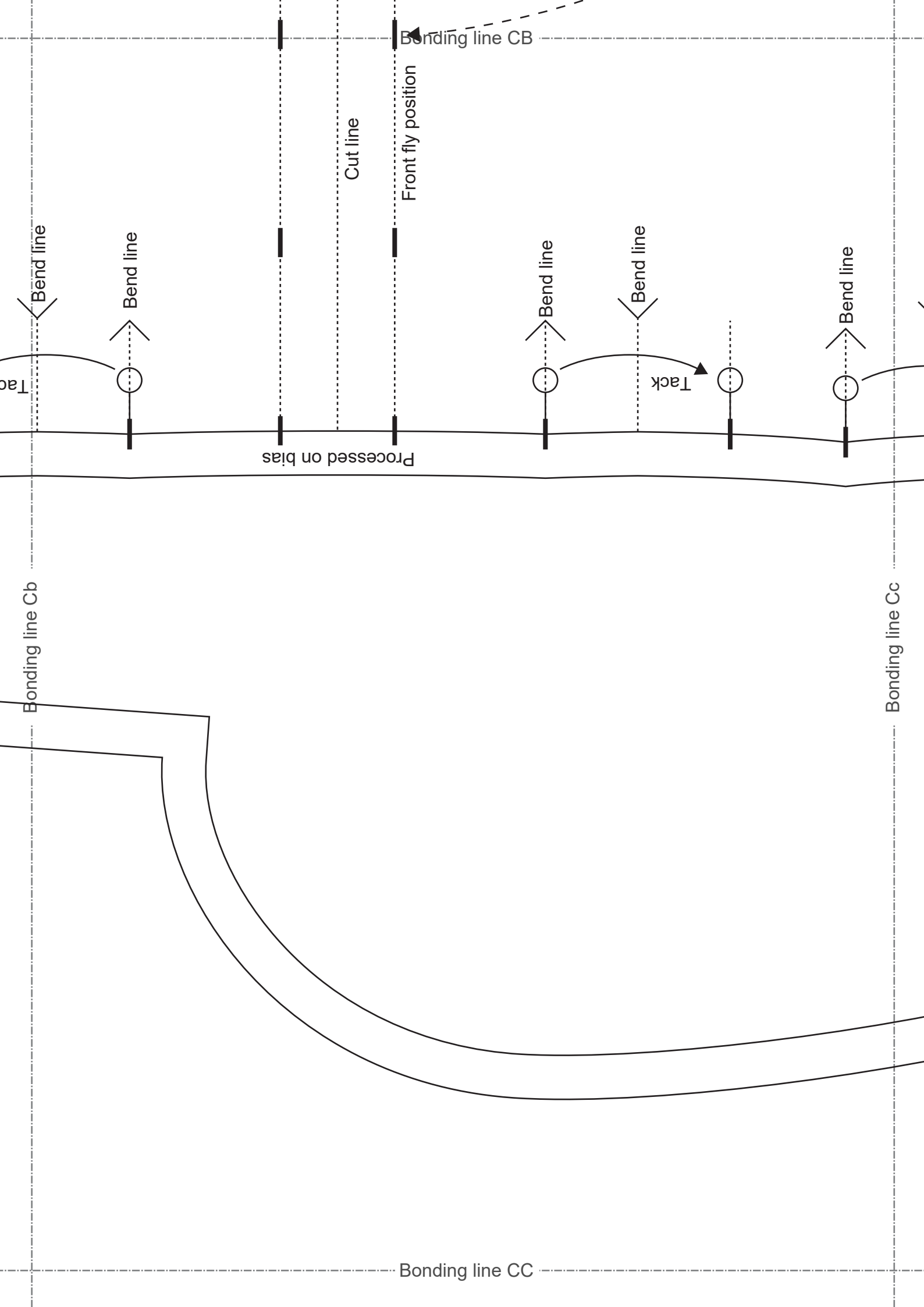
Bonding line Bc



Baste

Bonding line CB

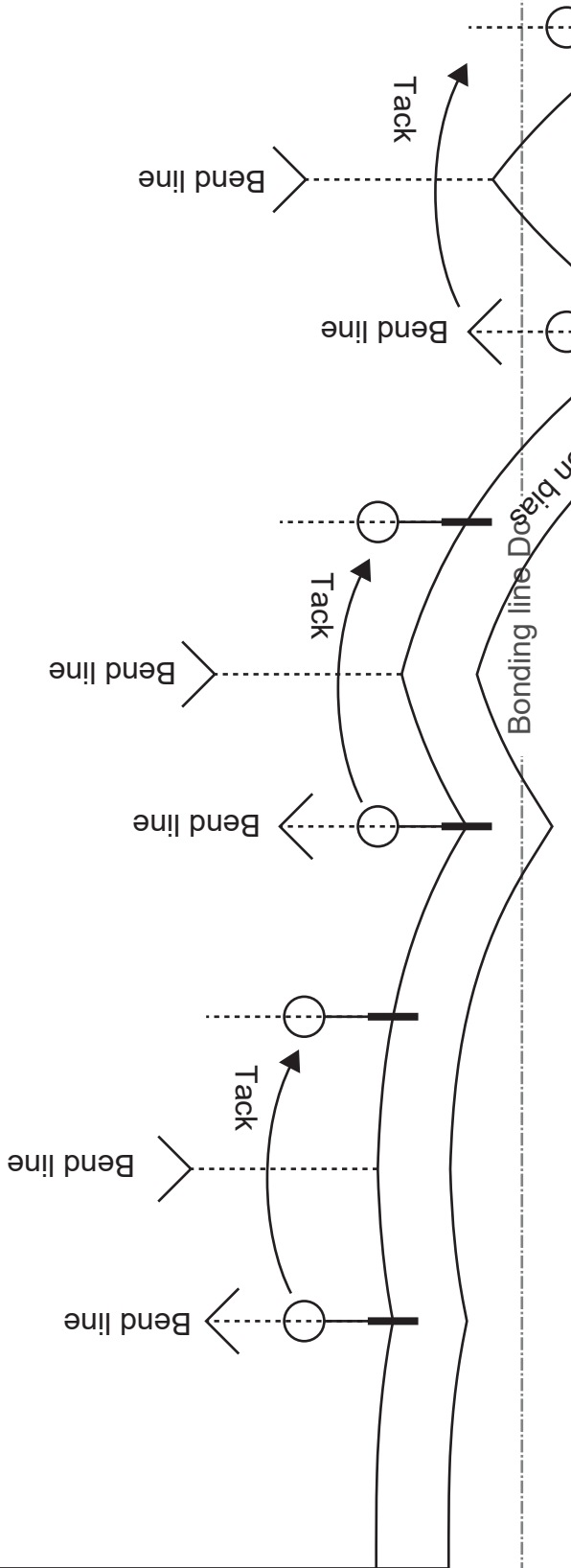
u

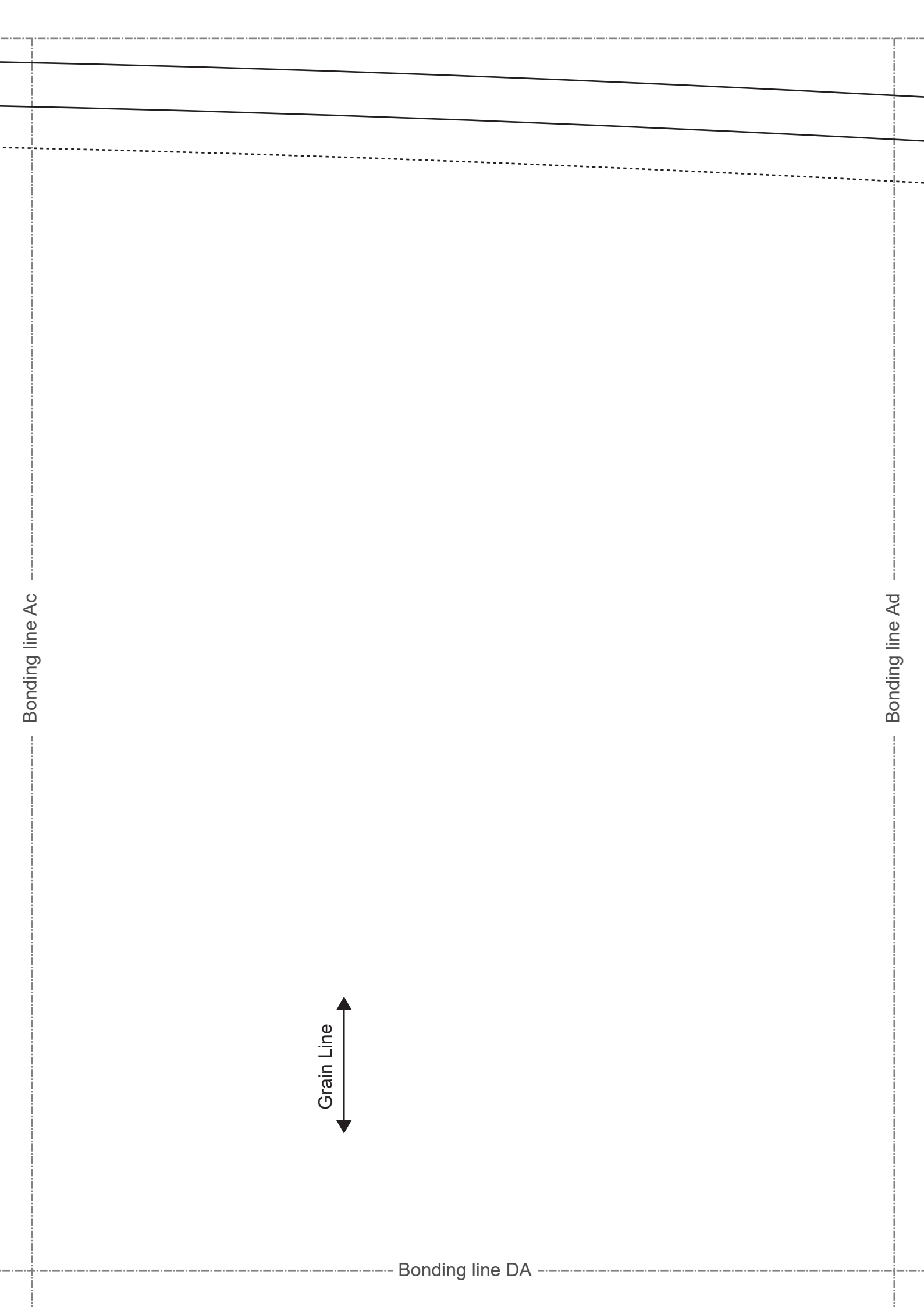


Bonding line CC

Bonding line Db

Bonding line CD





Bonding line Ac

Bonding line Ad

Grain Line

Bonding line DA

Bonding line DA

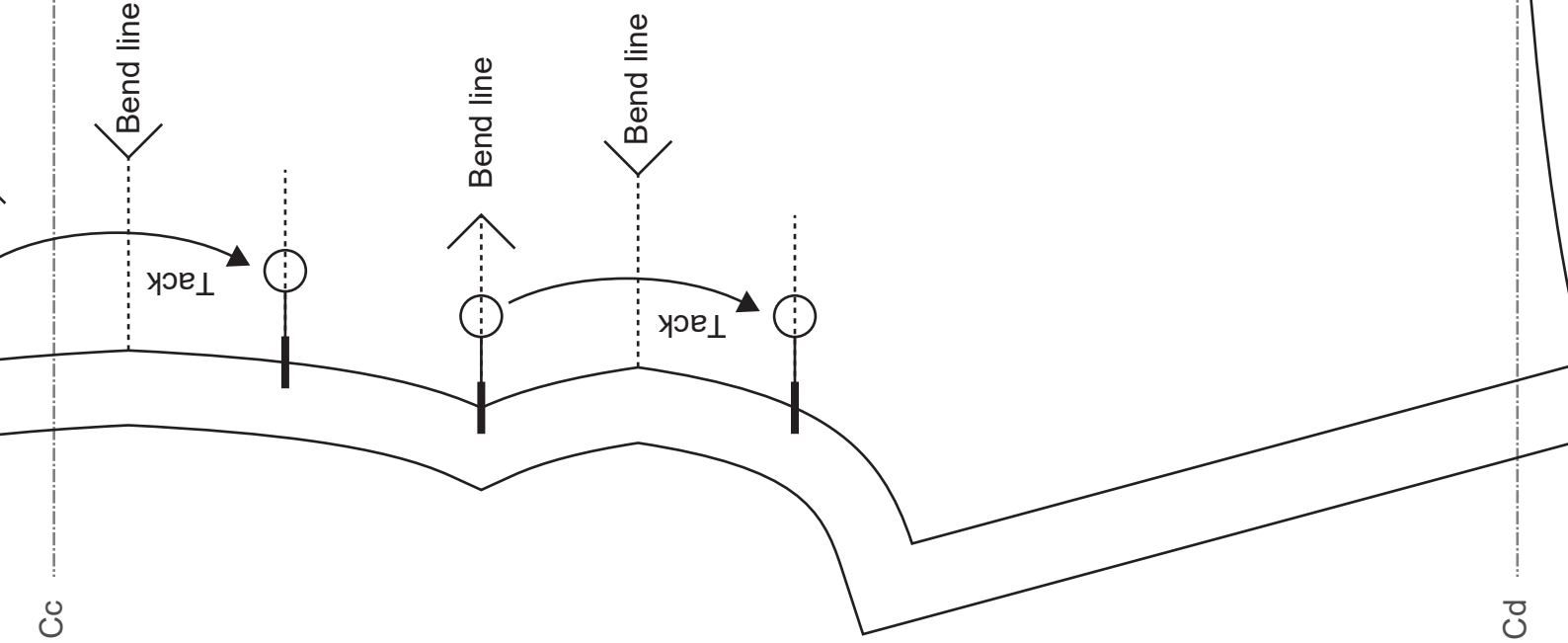
Bonding line Bc

Bonding line Bd

Bonding line DB



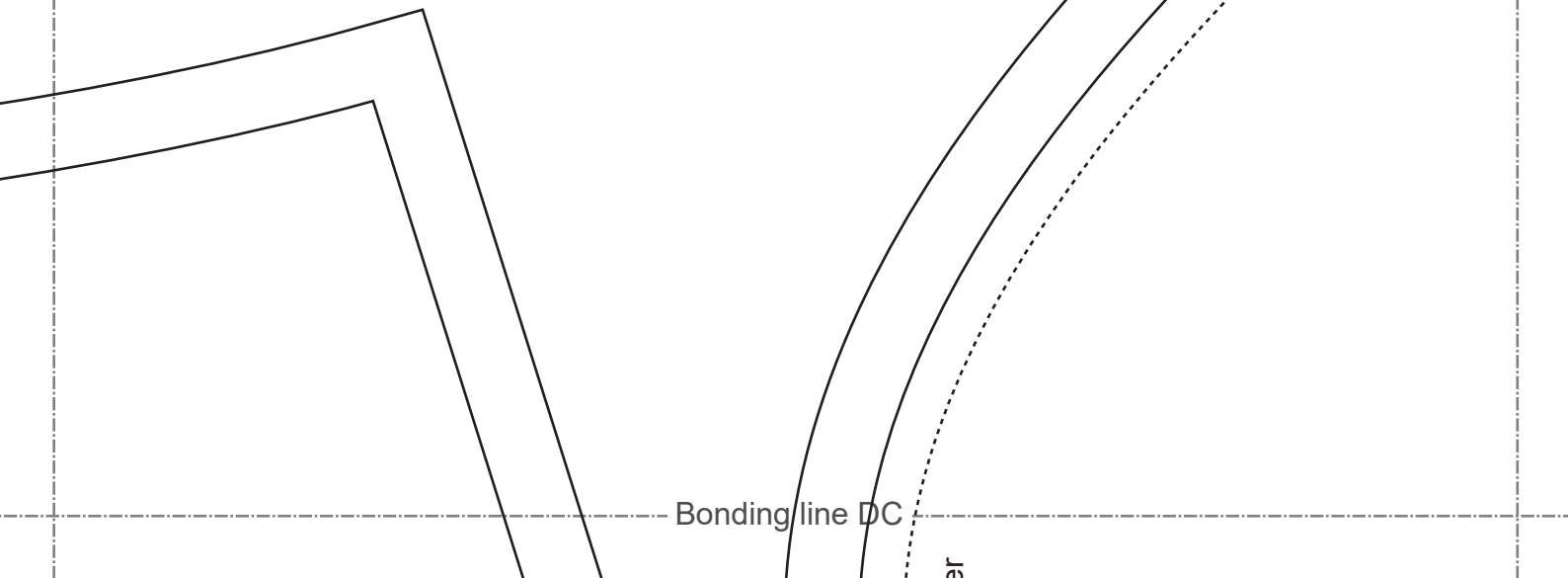
Bonding line DB

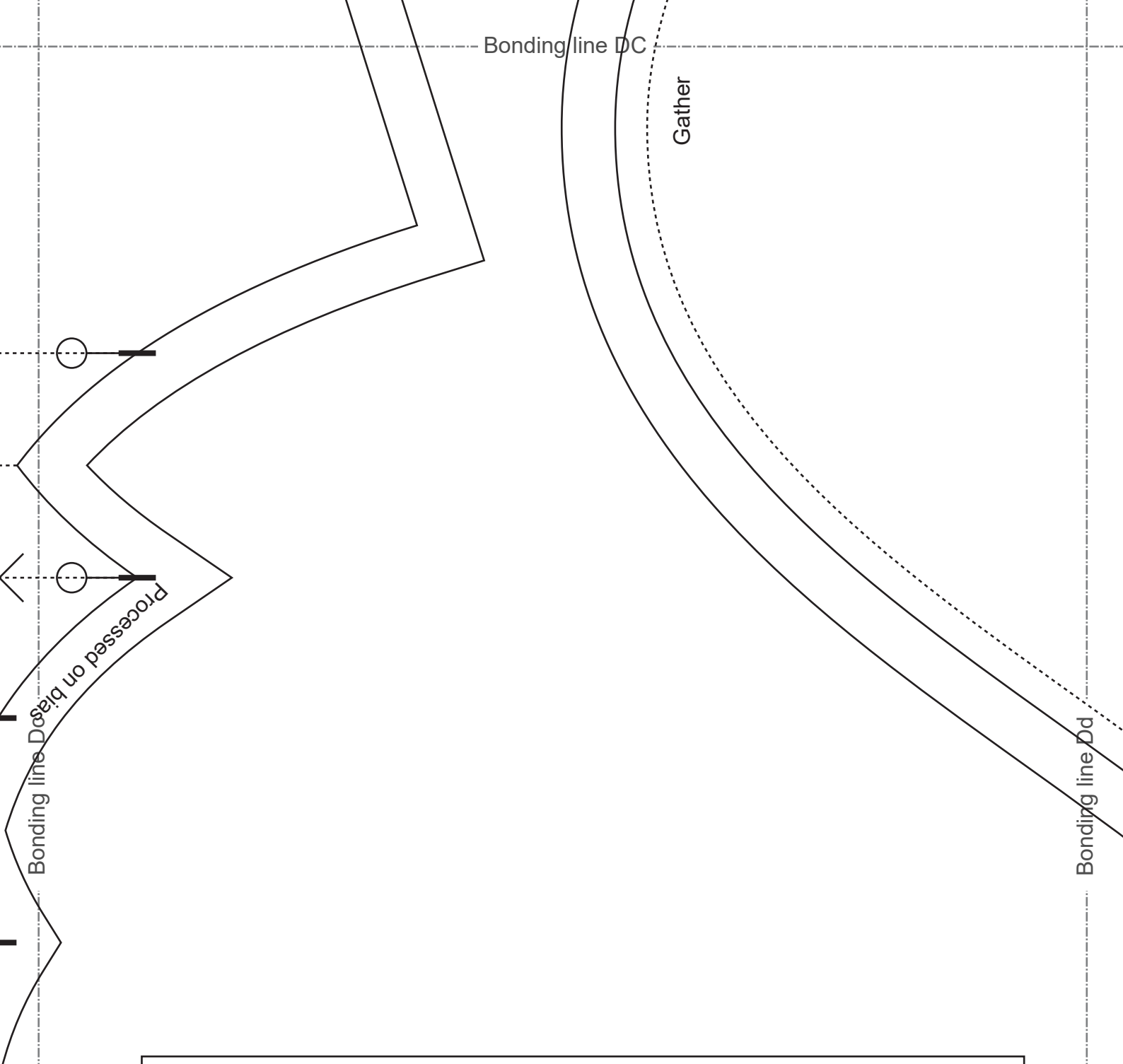


Bonding line Cc

Bonding line Cd


Bonding line DC






Interfacing Position
**Front Fly  
cut two**

---

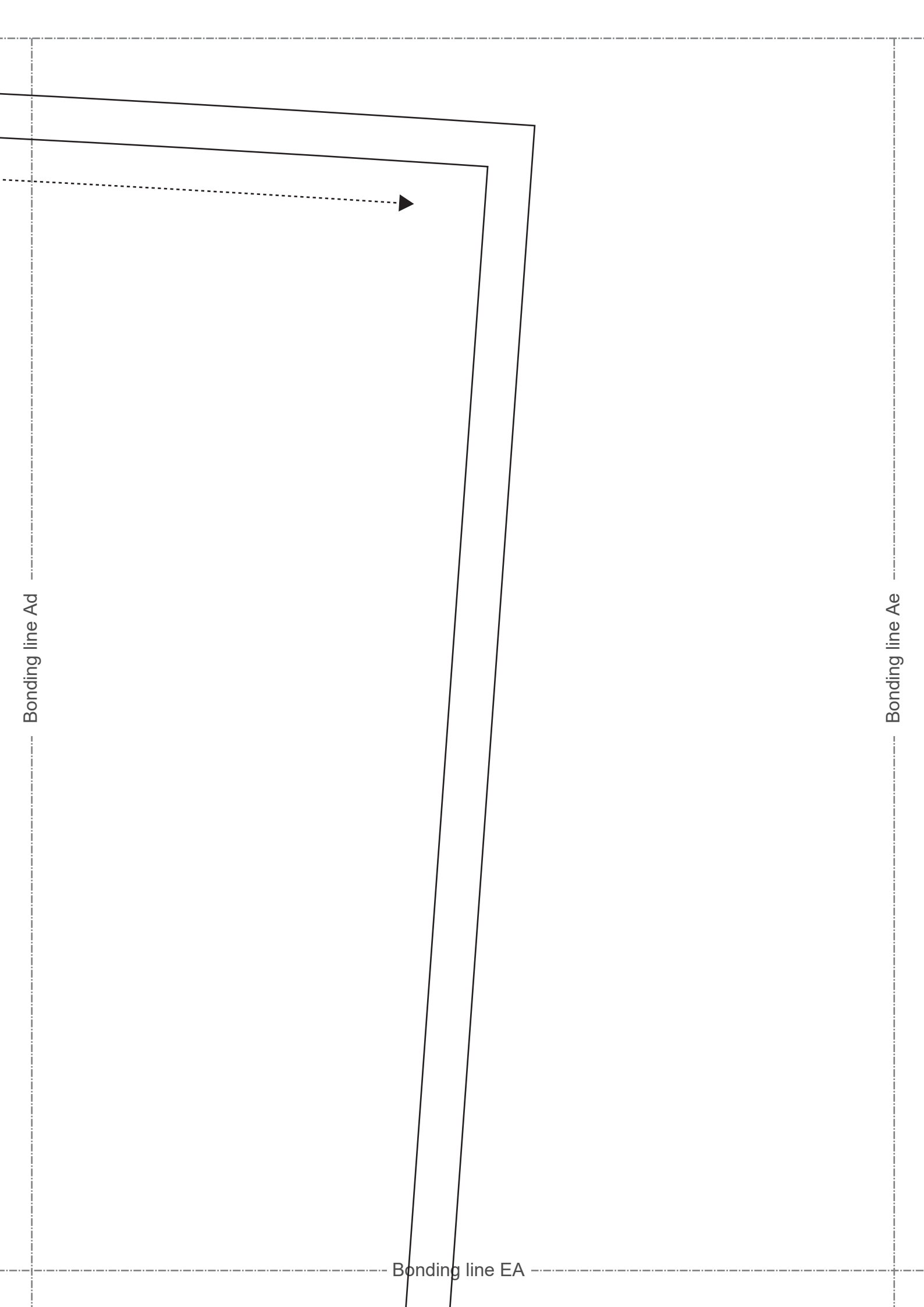


Button &  
Buttonhole Position



Seam allowance 1cm

Bonding line DD



Bonding line Ad

Bonding line Ae

Bonding line EA

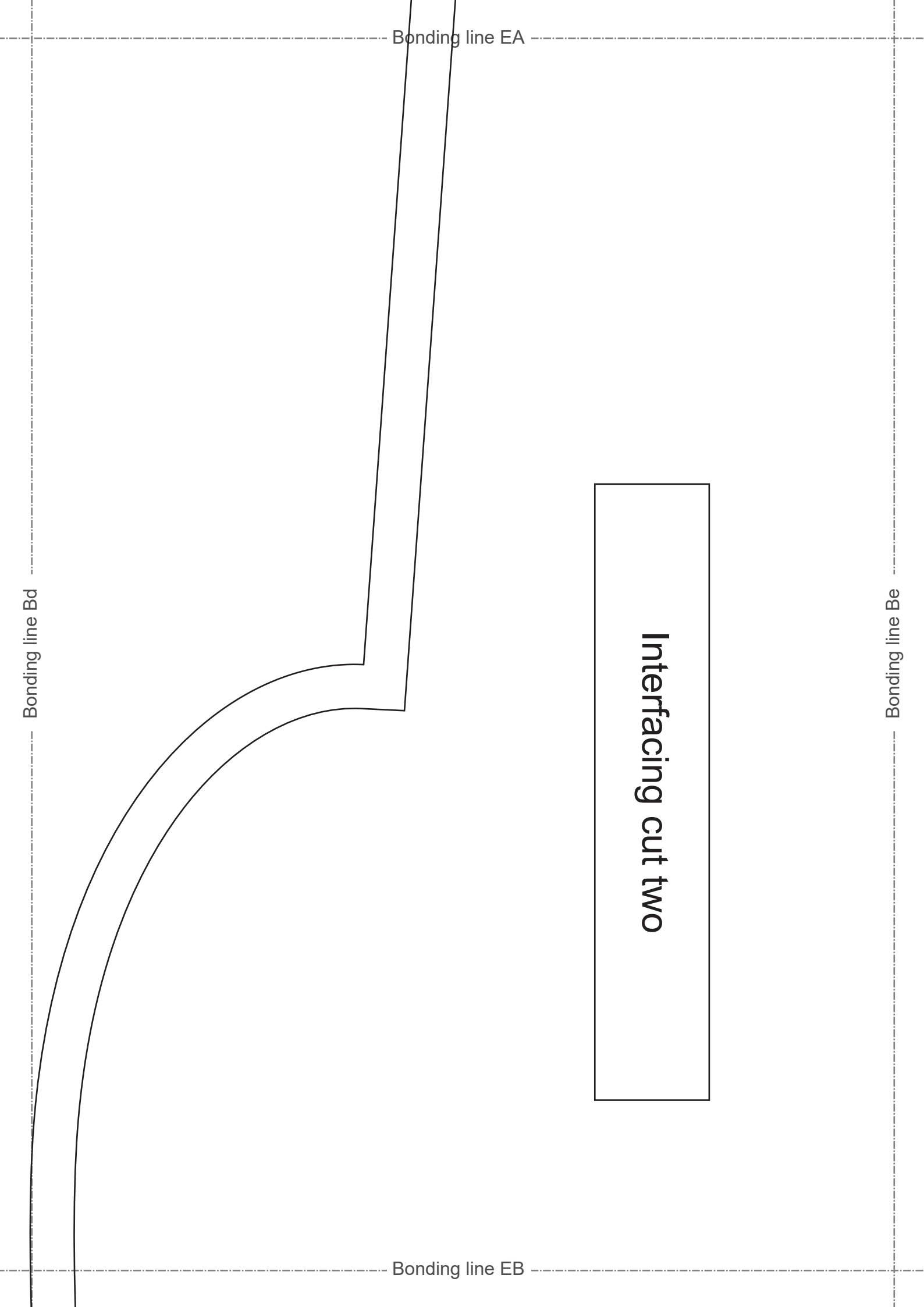
Bonding line Bd

Bonding line EA

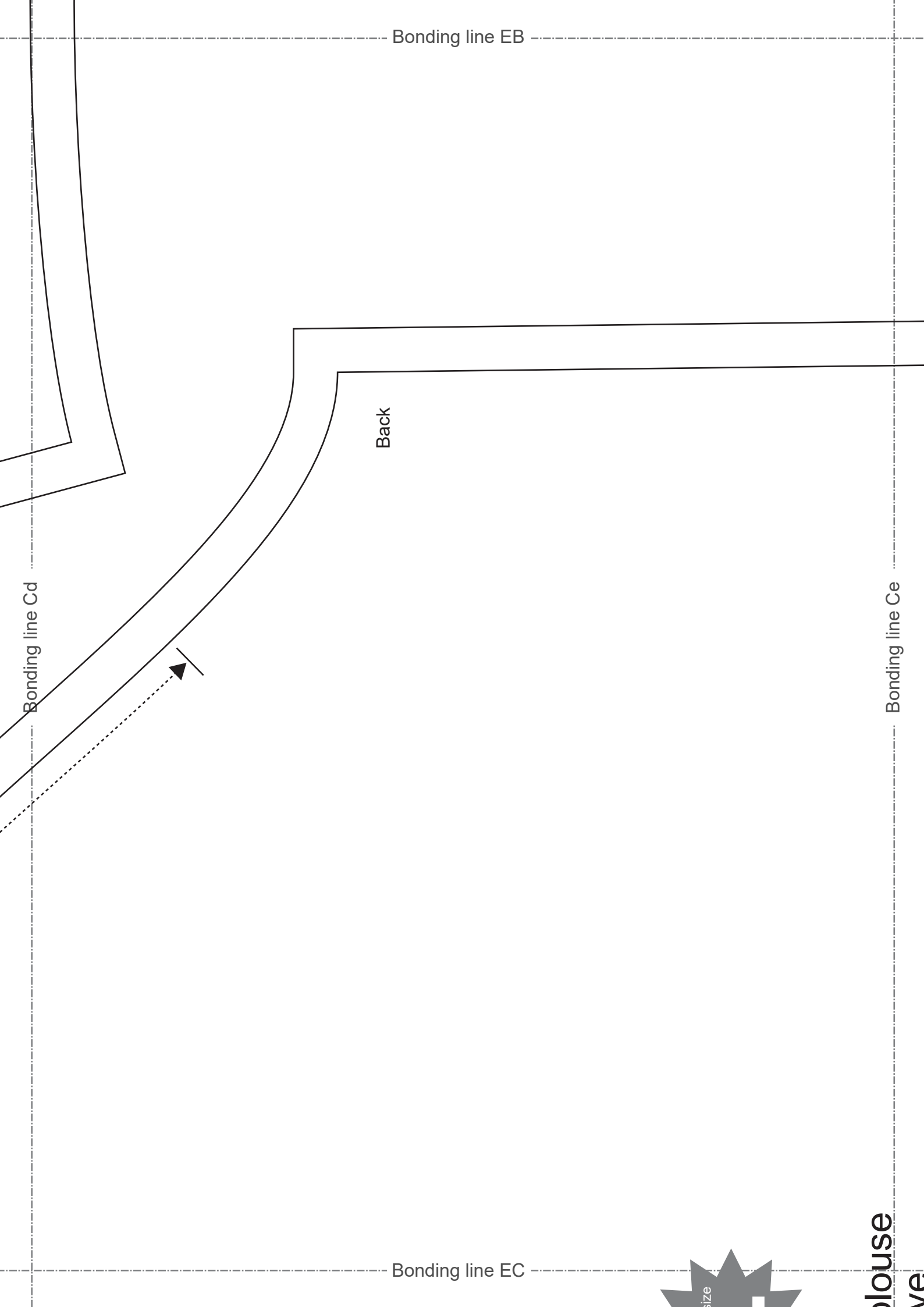
Bonding line Be

Bonding line EB

Interfacing cut two



Bonding line EB



Bonding line Cd

Back

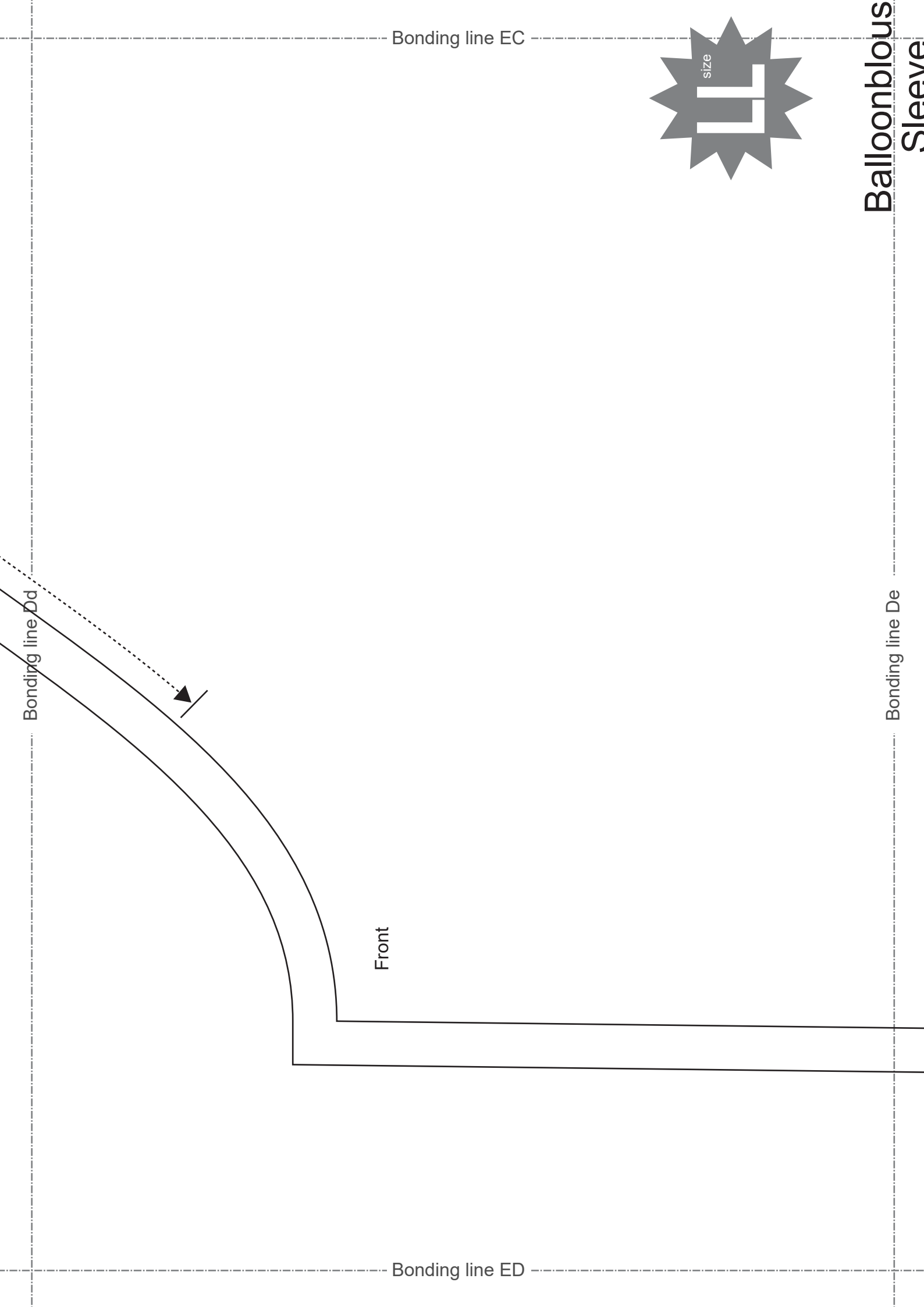
Bonding line Ce

Bonding line EC



blouse

ve



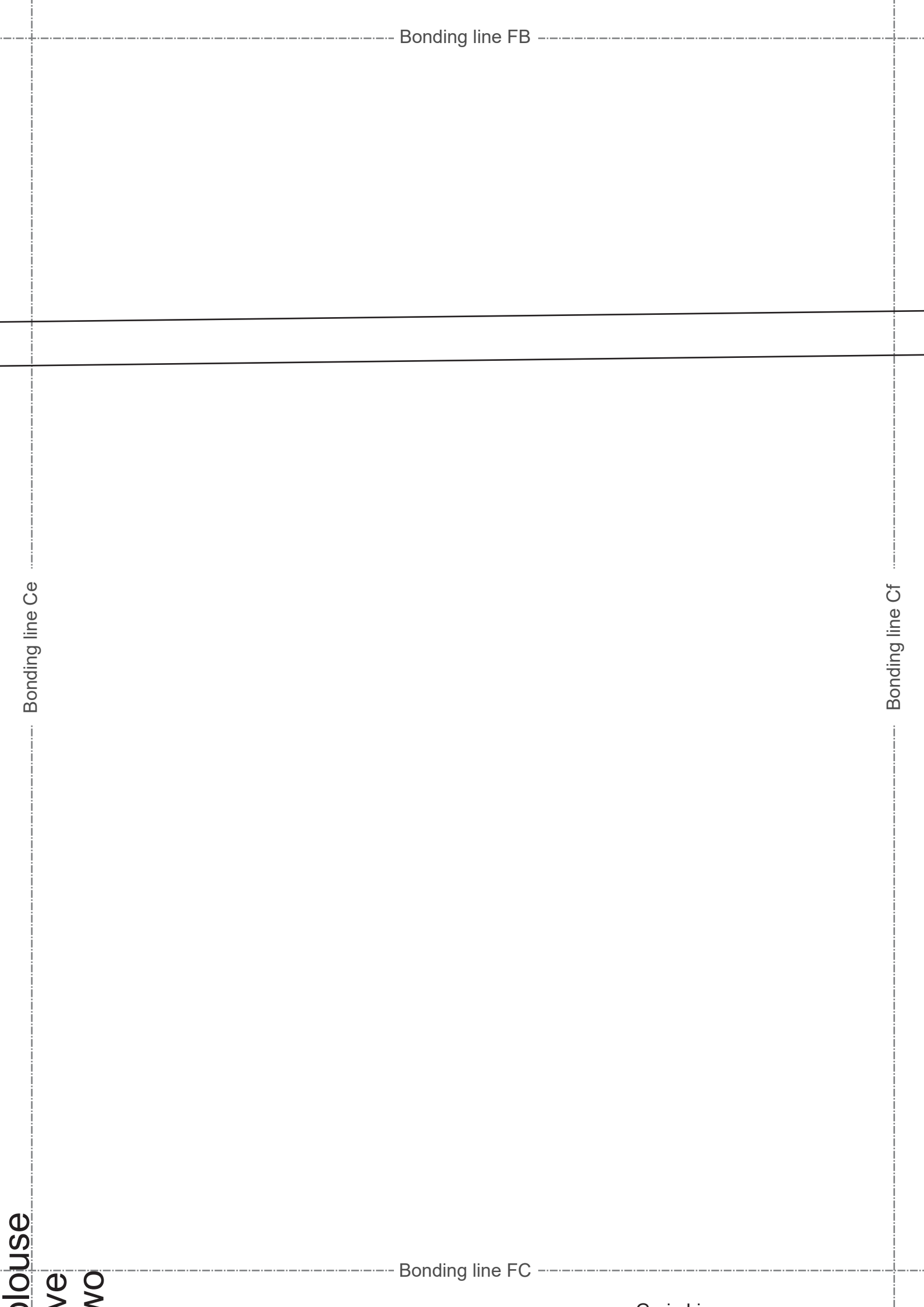
blouse  
ve  
WO

Bonding line FC

Bonding line Ce

Bonding line Cf

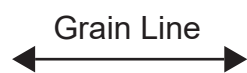
Bonding line FB



Balloonblous

Sleeve  
cut two

Bonding line FC



Bonding line De

Bonding line Df

Seam allowance 1cm

Bonding line FD

Bonding line GB

Bonding line Cf



Bonding line GC

Bonding line Cg

er  
d on bias

Bonding line Df

Bonding line GC

How to make bias tape.  
Please refer to this page  
<https://www.dr-cos.info/kt-biastape.html>



How to sew bias tape.  
Please refer to this page  
<https://www.dr-cos.info/kt-biastape3.html>



Gather



Processed on bias

Bonding line GD

Bonding line Dg