

DRCOS
SITE <https://drcos.info/en> <https://drcos.com/jp>
MAIL info@drcos.com
Twitter https://twitter.com/drcos_com
Pinterest <https://www.pinterest.jp/drcosinfo>

Seam allowance 1cm

Bonding line AA

Bonding line Aa

Bonding line AA

Bonding line Ba

Bend line

Bend line

Bend line

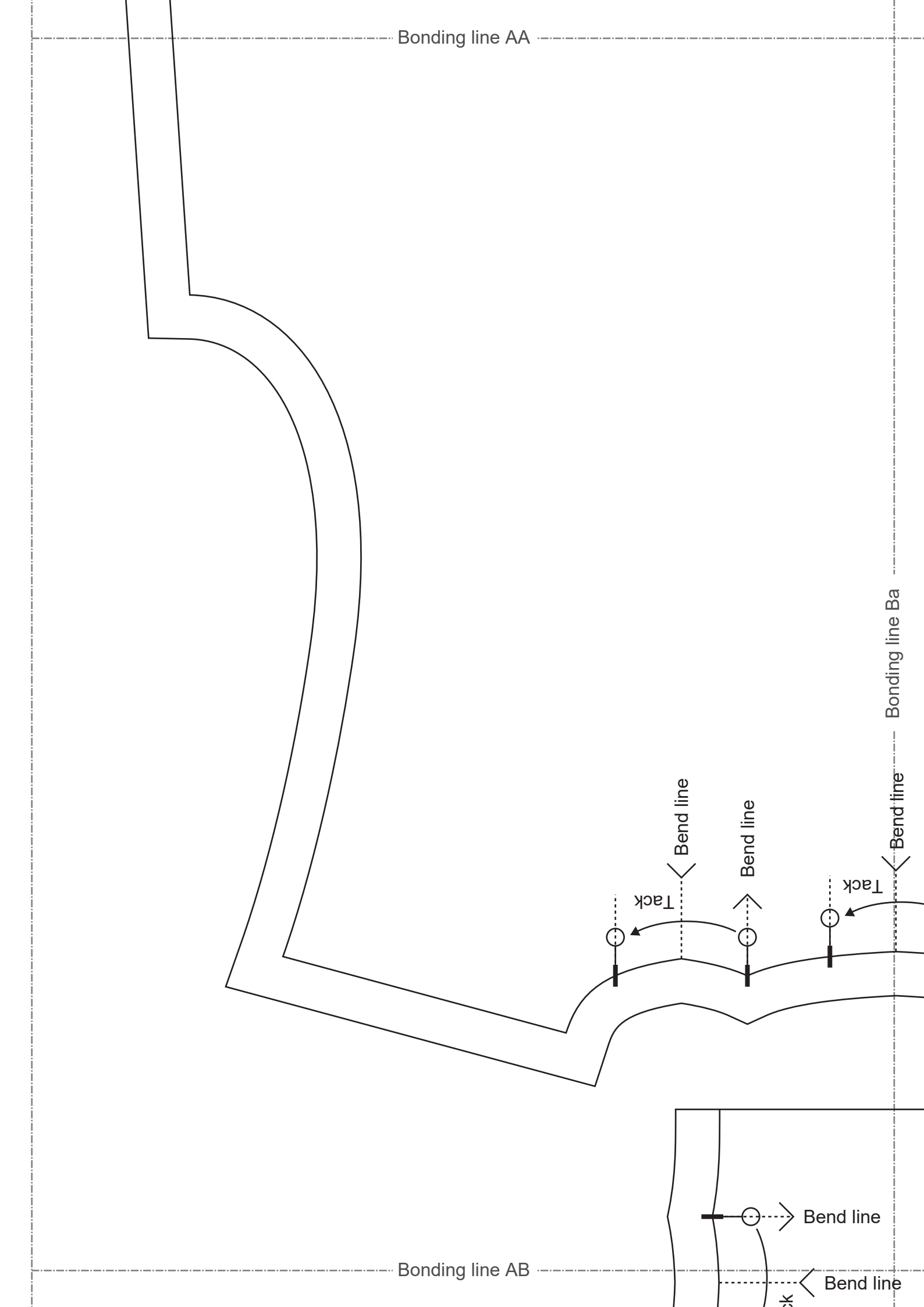
Tack

Tack

Bend line

Bend line

Bonding line AB



Bonding line AB

Bend line

Tack

Bend line

Bend line

Tack

Bend line

Bend line

Tack

Processed on bias

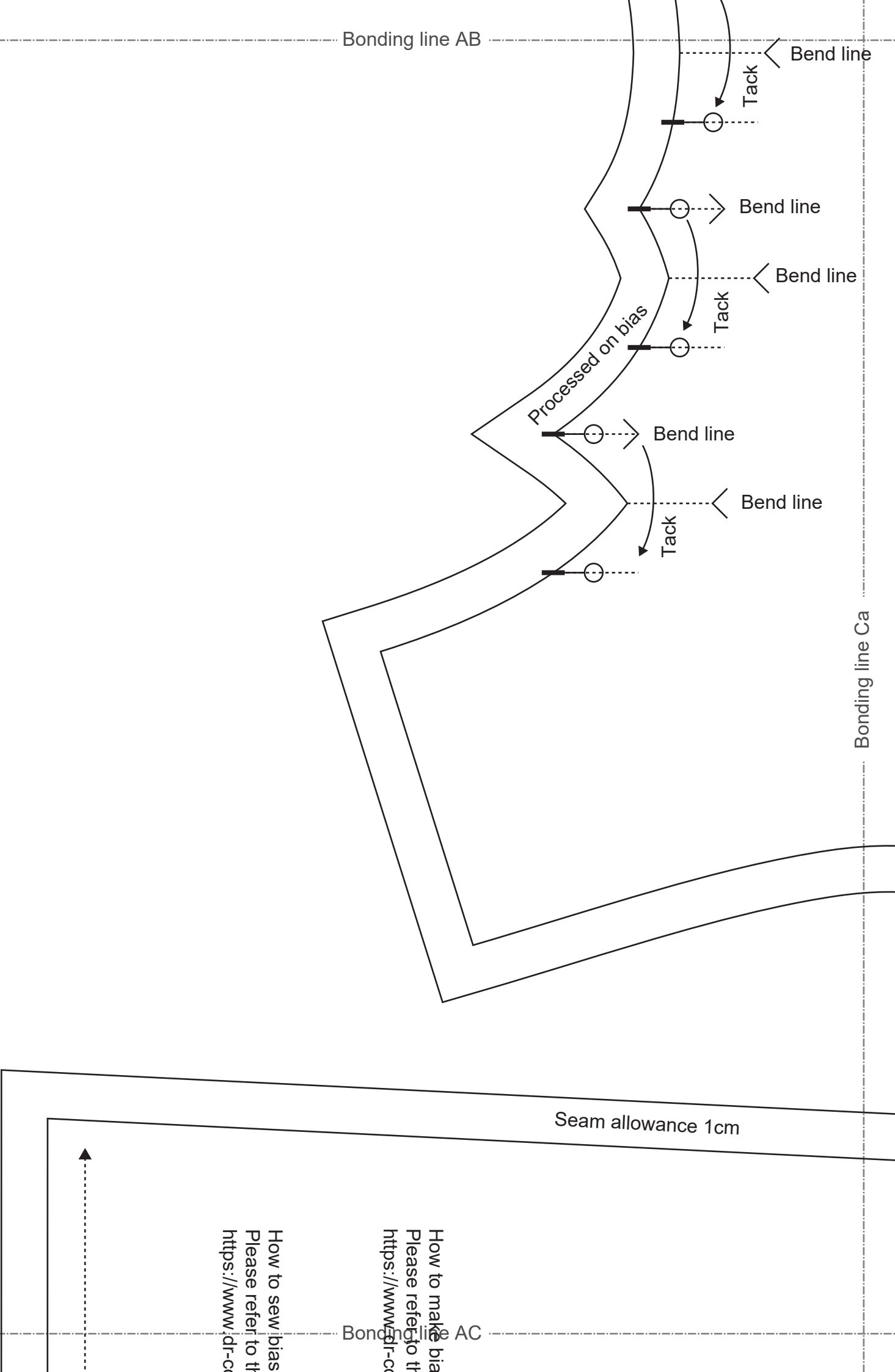
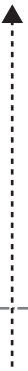
Bonding line Ca

Seam allowance 1cm

Bonding line AC

How to sew bias
Please refer to the
<https://www.dr-c.com>

How to make bias
Please refer to the
<https://www.dr-c.com>



CUT TWO

Bonding line Da

Bonding line AC

Bonding line AD

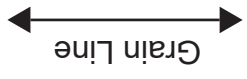
make bias tape.
refer to this page

www.dr-cos.info/kt-biastape.html



sew bias tape.
refer to this page

www.dr-cos.info/kt-biastape3.html



Grain Line

Gather

Processed on bias

DRCOS
 SITE <https://dr-cos.info/en/> <https://dr-cos.com/jp/>
 MAIL info@dr-cos.com
 Twitter https://twitter.com/@drcos_com
 pinterest <https://www.pinterest.jp/drcosinfo>

Children's

size 120

Balloonblouse Back Bodice cut one

Please check here for the required fabric length images, cutting reference images, and the step-by-step sewing instructions.
<https://dr-cos.info/tp-balloonblouse.html>

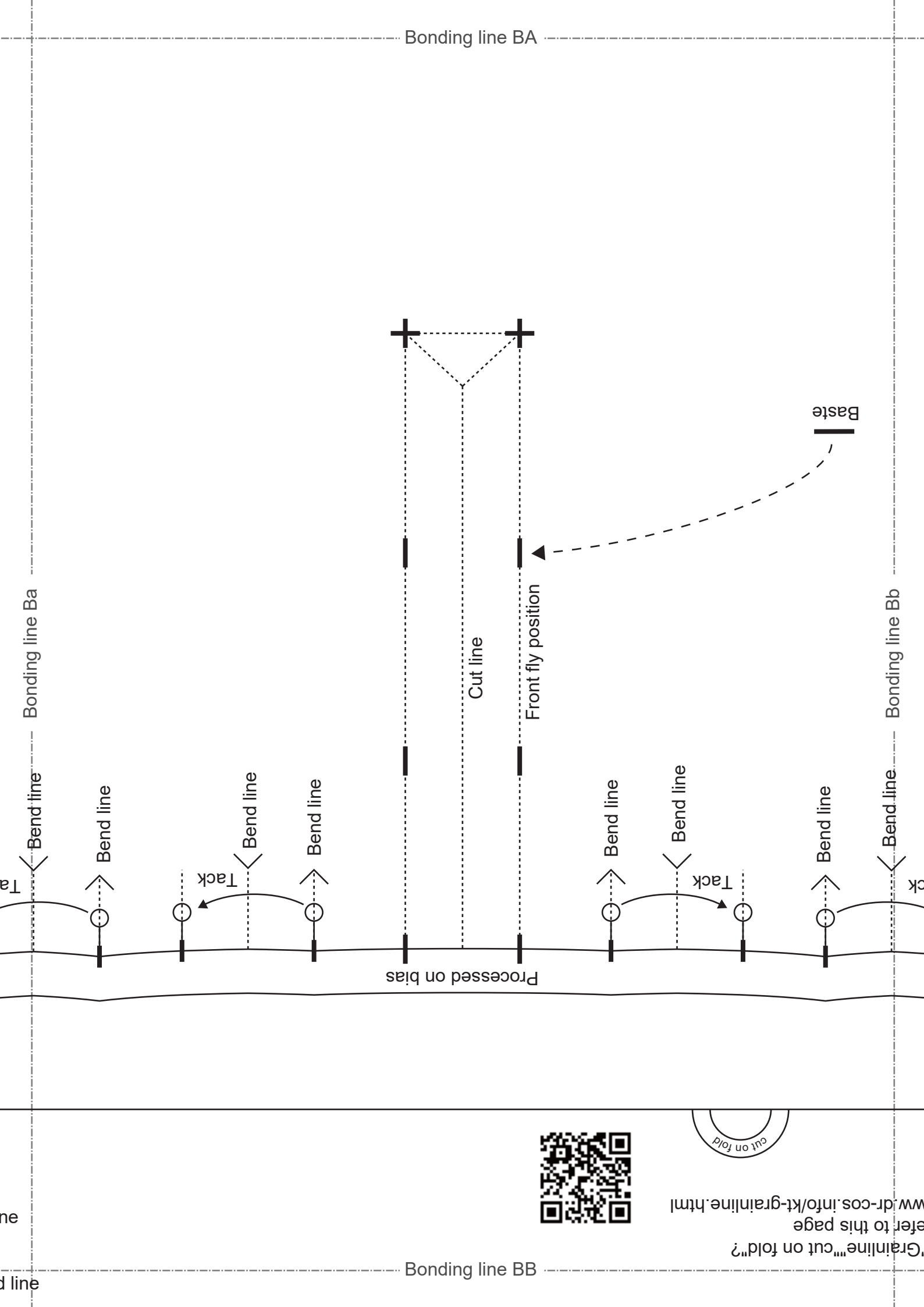


How to make gathers using a sewing machine.
 Please refer to this page
<https://www.dr-cos.info/kt-gather.html>



Gather

Processed on bias



Bonding line BB

d line

ine

Children's ^{size} 120

Balloonblouse
Front Bodice
cut one



Bonding line Ca

Bonding line Cb



sewing machine & overlock sewing machine).

serge.html

allowance 1cm

Front

Bonding line BC

Bonding line BC

Gather

Bonding line Db

Back

Bonding line BD

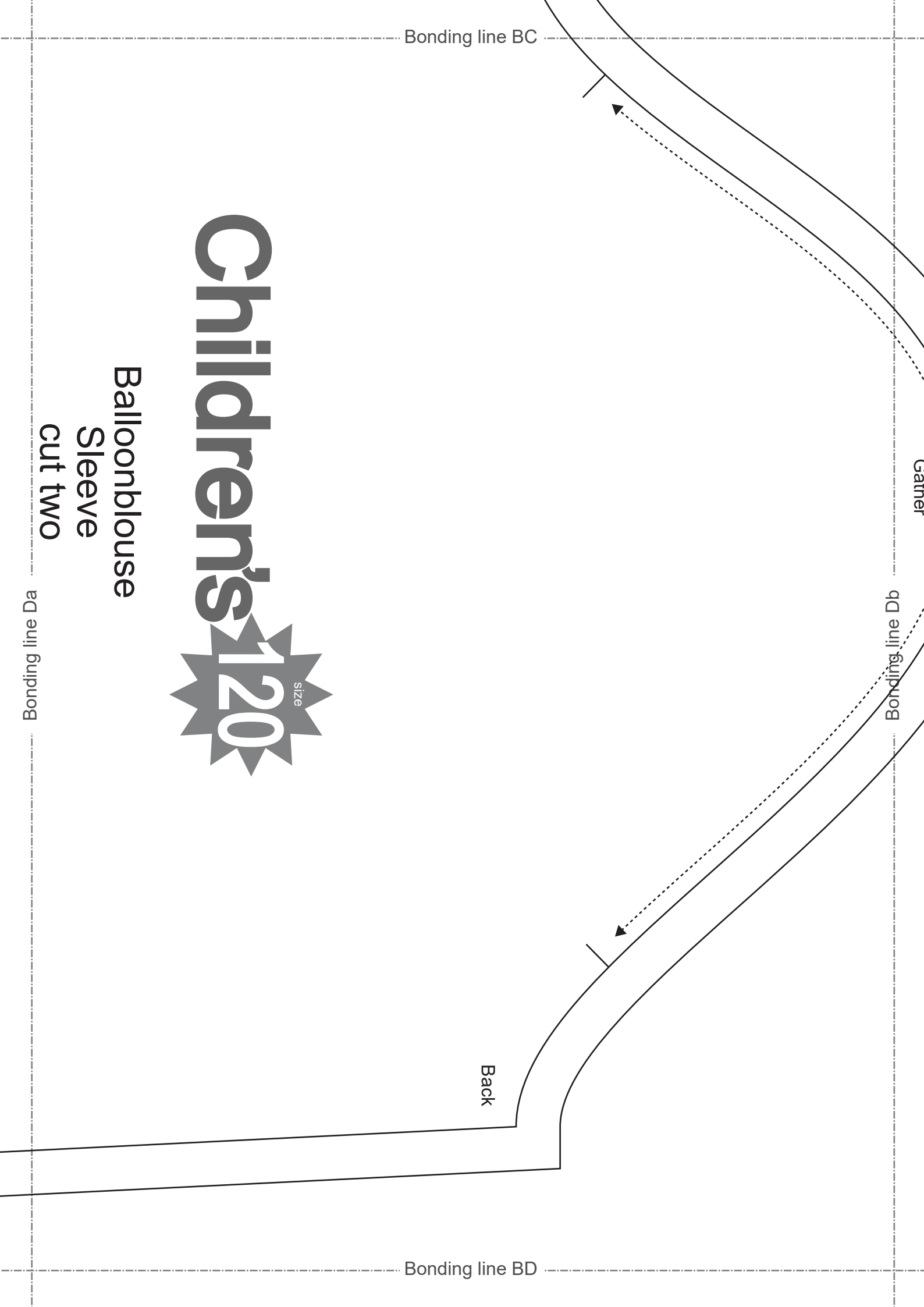
Children's ^{size} 120

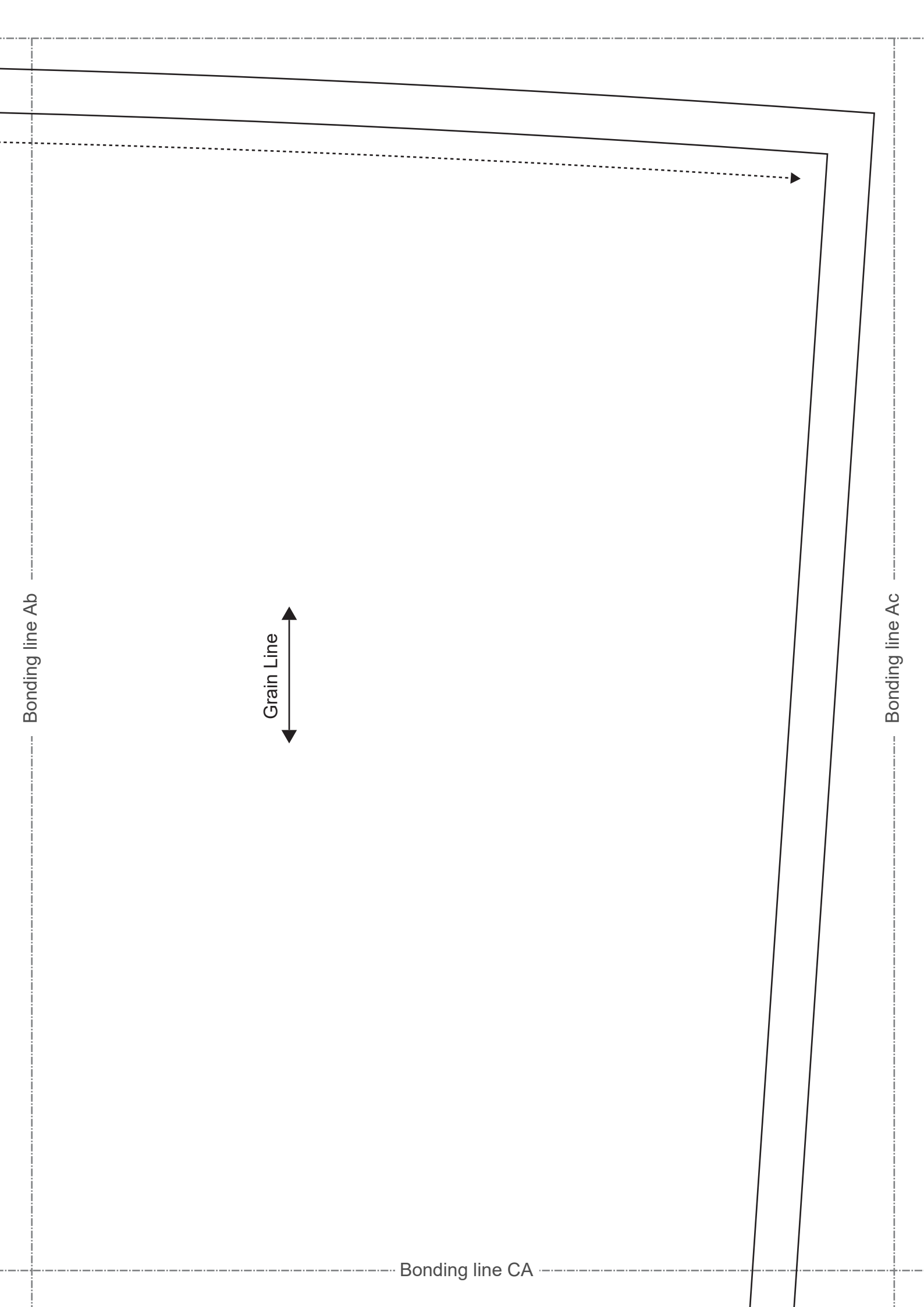
Balloonblouse

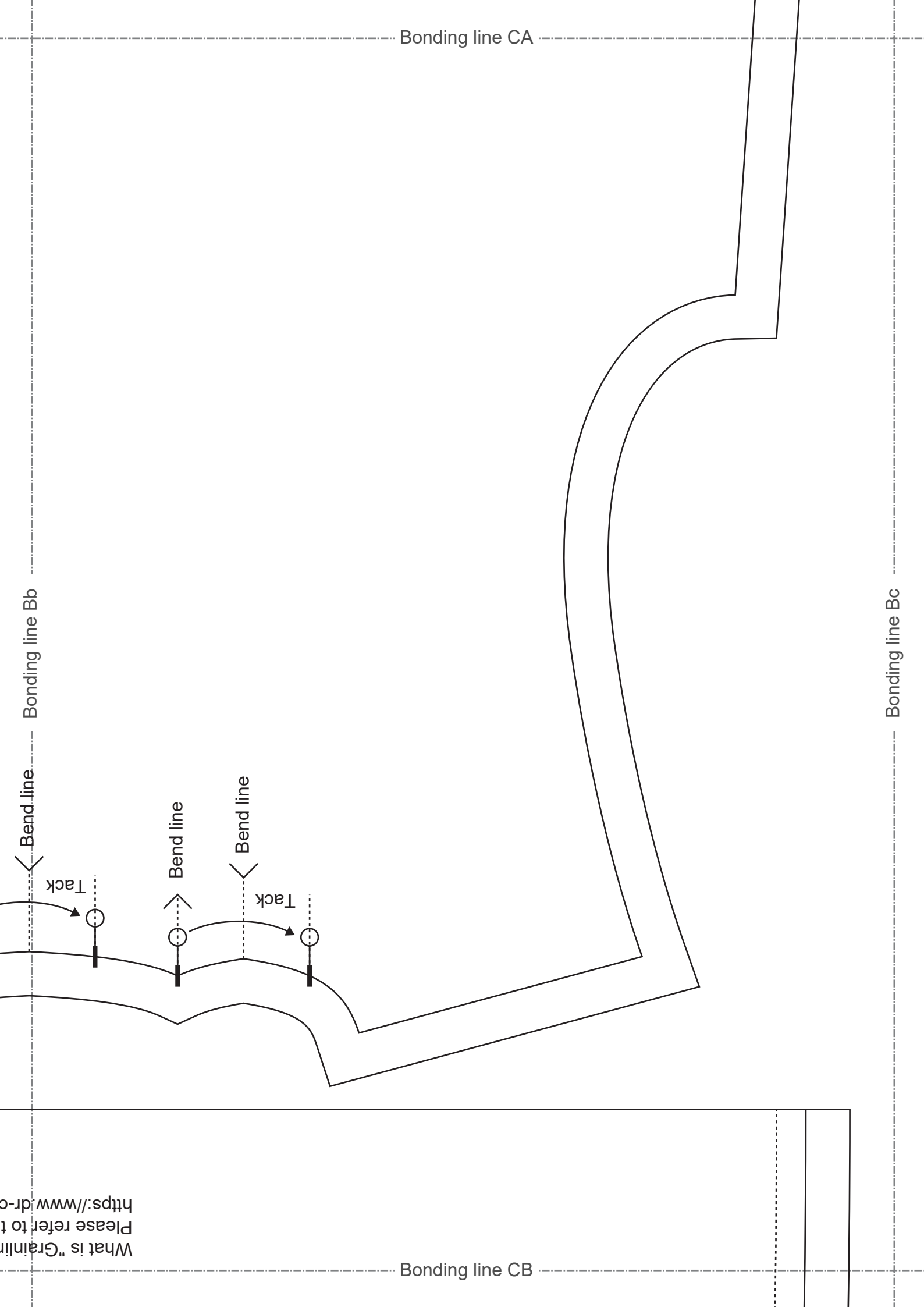
Sleeve

cut two

Bonding line Da



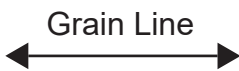




What is "Grainline"
Please refer to the
<https://www.dr-c.com>

Bonding line CB

Bonding line Cb



Gather

Processed on bias

Bonding line Cc

Bonding line CC

Seam allowa
How to Serge/overlock (sewing m
Please refer to this page
<https://www.dr-cos.info/kt-serge.h>

DRCOS
 SITE <https://dr-cos.info/en> <https://dr-cos.com/jp>
 MAIL info@dr-cos.com
 Twitter [@dracos](https://twitter.com/@dracos) com
 pinterest <https://www.pinterest.jp/dracosinfo>

Interfacing cut two

Interfacing Position
Front Fly
cut two



Button &
Buttonhole Position



Seam allowance 1cm

Gather

Bonding line Db