

Processed on bias

Gather

Grain Line

Bonding line Aa

Balloonblouse
Front Bodice
cut one

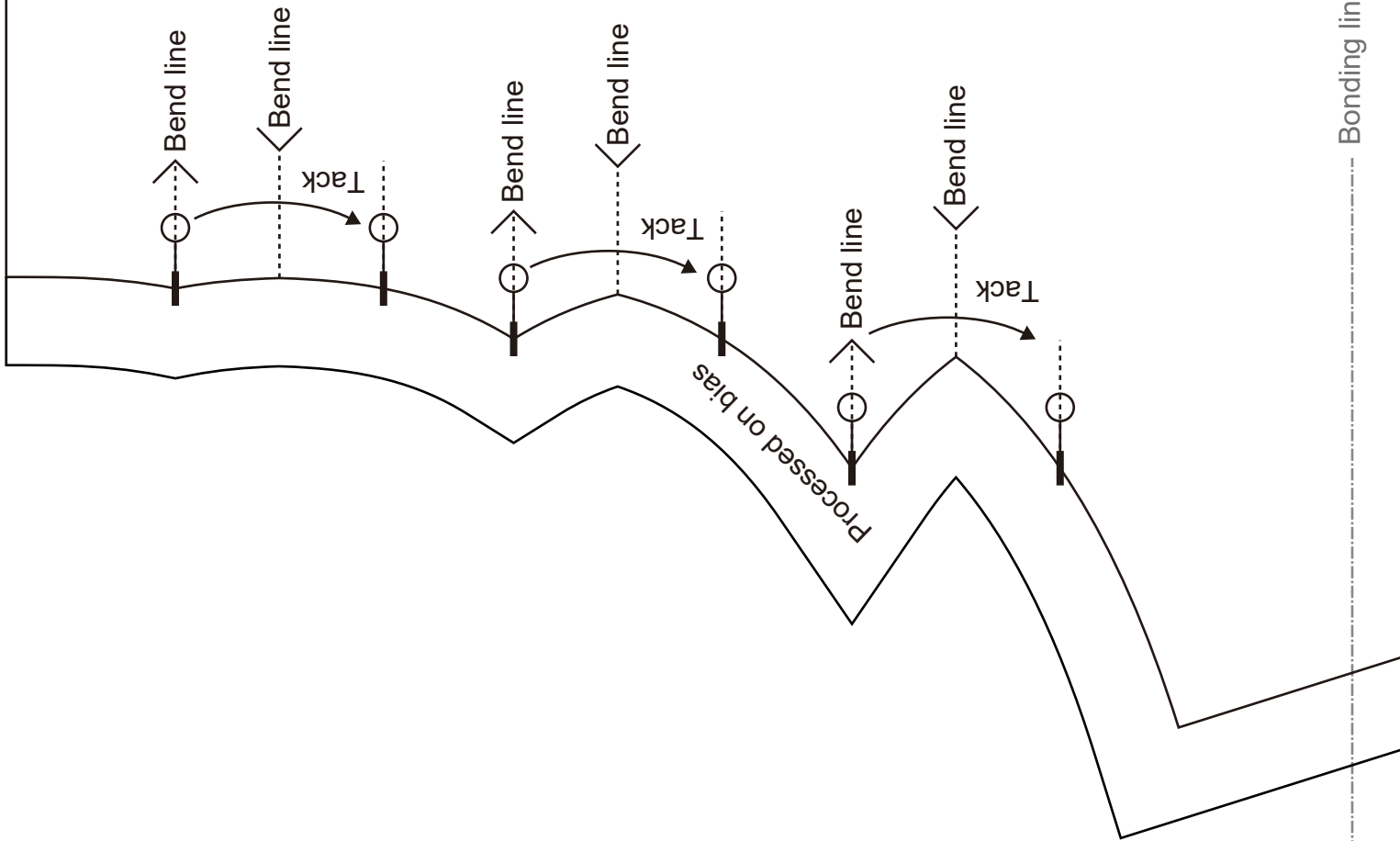


Bonding line AA

cut on fold



Children's



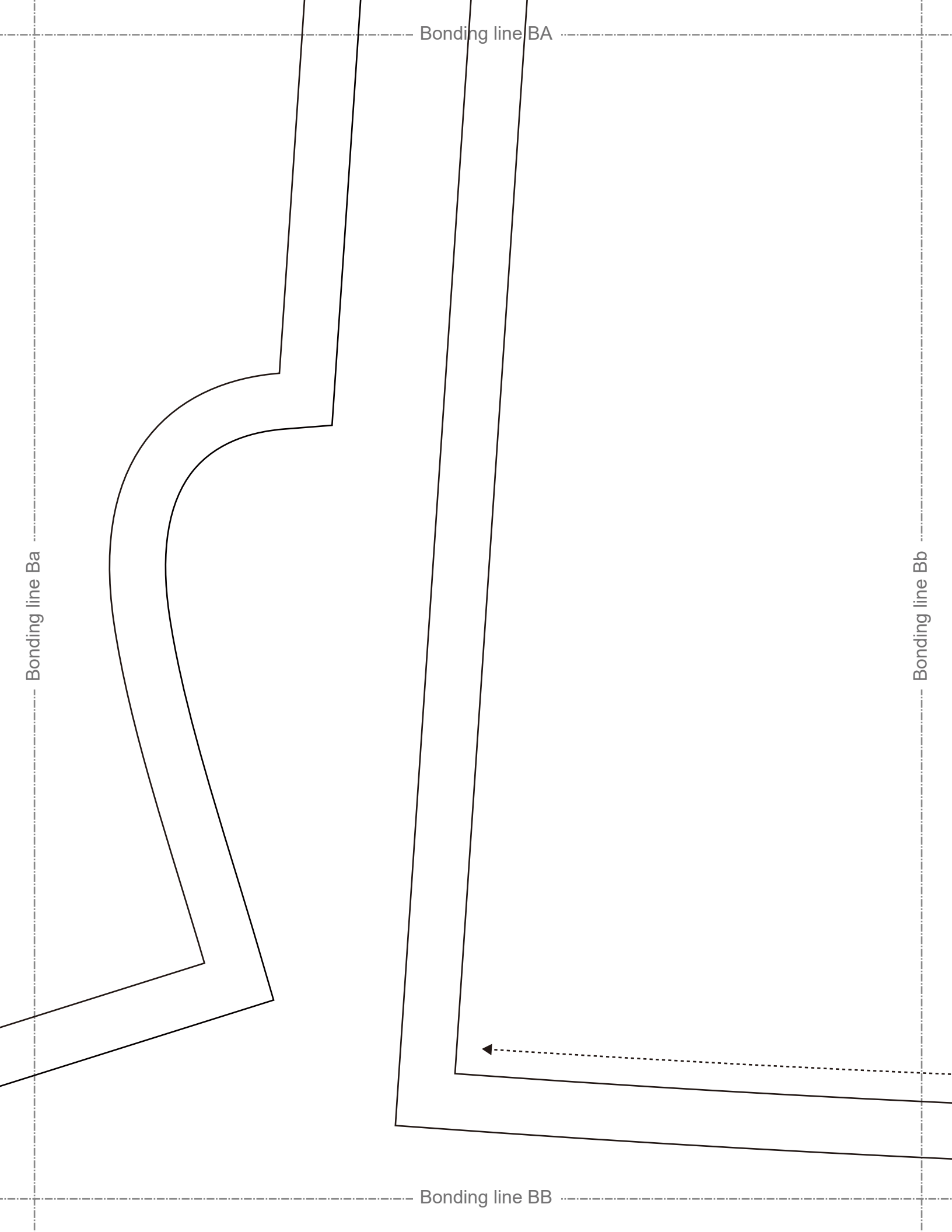
Bonding line Aa

DRCOS
SITE <https://drcos.info/en> [https://drcos.com\(fp\)](https://drcos.com(fp))
MAIL info@drcos.com
Twitter https://twitter.com/drcos_com
Pinterest <https://www.pinterest.jp/drcosinfo>

Seam allowance 1/2in.

Bonding line BA

Bonding line Ab

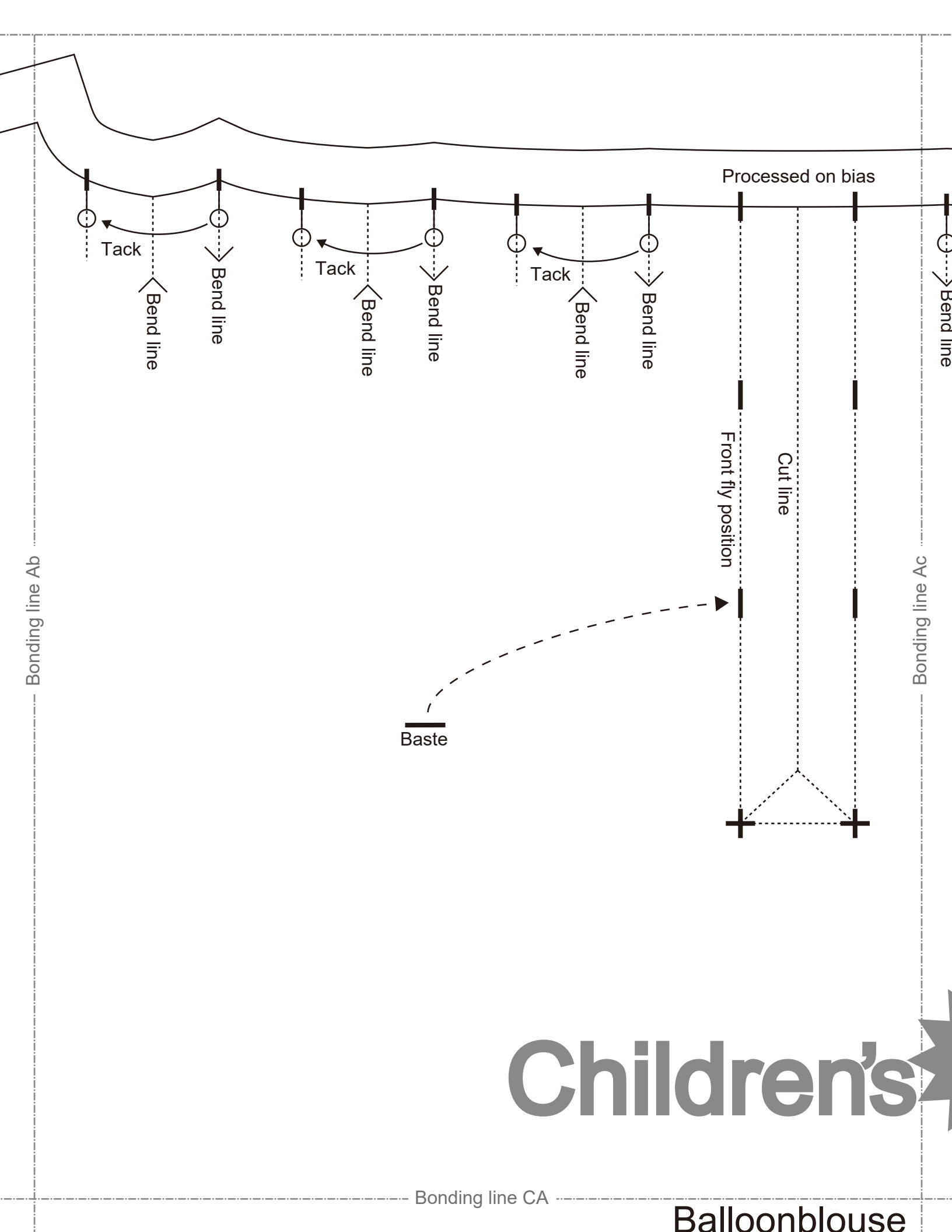


Bonding line BA

Bonding line Ba

Bonding line Bb

Bonding line BB



Bonding line Ab

Bonding line Ac

Bonding line CA

Processed on bias



Tack



Bend line



Tack

Bend line



Bend line



Tack

Bend line



Bend line

Front fly position

Cut line

Baste

Children's

Balloonblouse

Bonding line CA

Balloonblouse Back Bodice cut one

Bonding line Bb

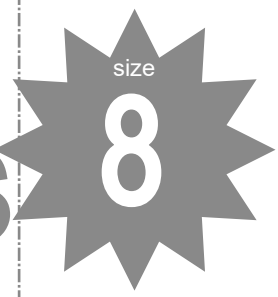
Bonding line Bc

Gather

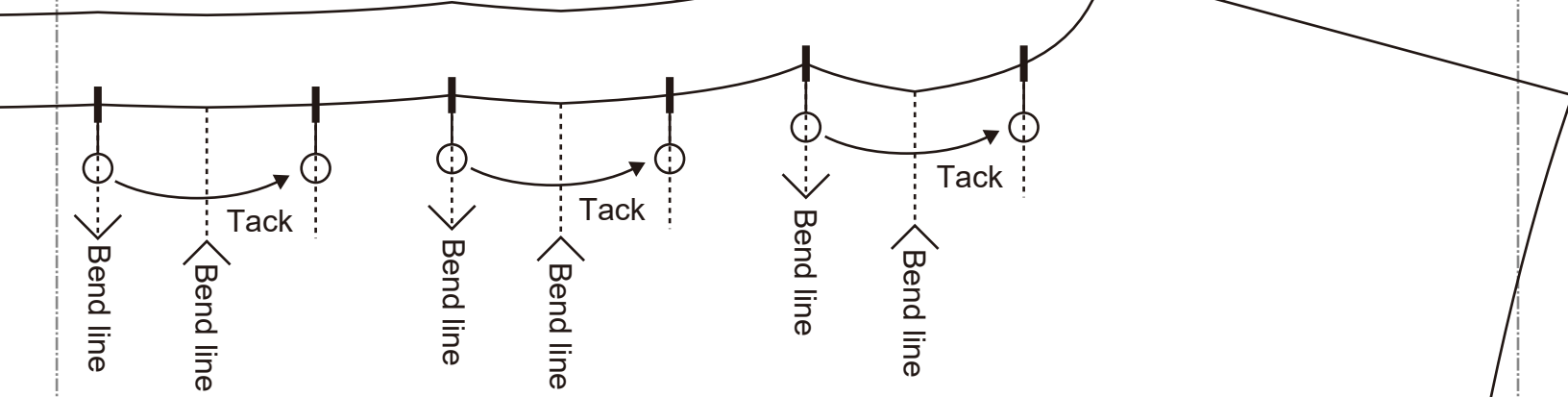
Processed on bias

Bonding line CB

S



Bonding line Ac



Bonding line Ad

Bonding line DA

e

Bonding line DA

e e

Bonding line Bc

Bonding line Bd



Grain Line

D

SITE ht
MAIL in
Twitter
pinteres

Bonding line DB

bias

←
SITE [https://dr-cos.info\(en\)](https://dr-cos.info/en) [https://dr-cos.com\(jp\)](https://dr-cos.com/jp)
MAIL info@dr-cos.com
Twitter https://twitter.com/dr-cos_com
Pinterest <https://www.pinterest.jp/dr-cosinfo>

DRCOS

Bonding line Ad

Bonding line Ae

o
e
ouse

Bonding line EA





Bonding line EA

Back

Seam allowance 1/2in.

Bonding line Bd

Bonding line Be

Interfacing cut two

DRCOS

SITE [https://dr-cos.info\(en\)](https://dr-cos.info(en)) [https://dr-cos.com\(jp\)](https://dr-cos.com(jp))

MAIL info@dr-cos.com

Twitter [@drcos_com](https://twitter.com/@drcos_com)

Pinterest <https://www.pinterest.jp/drcosinfo>

Bonding line EB

Balloonblouse Sleeve cut two

Bonding line Ae



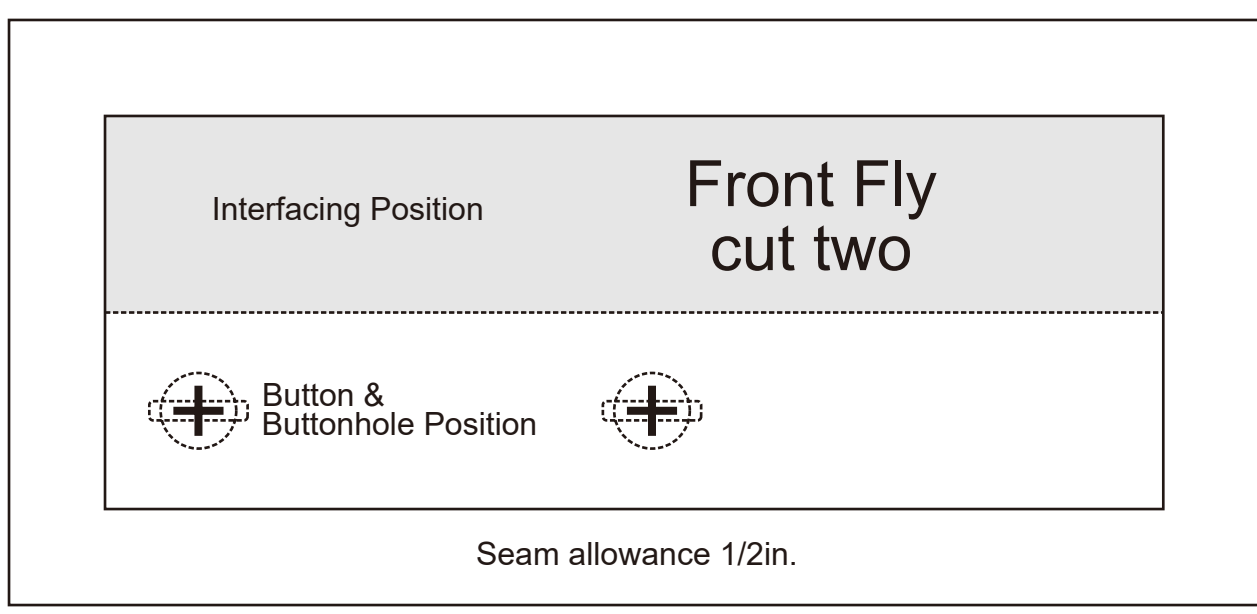
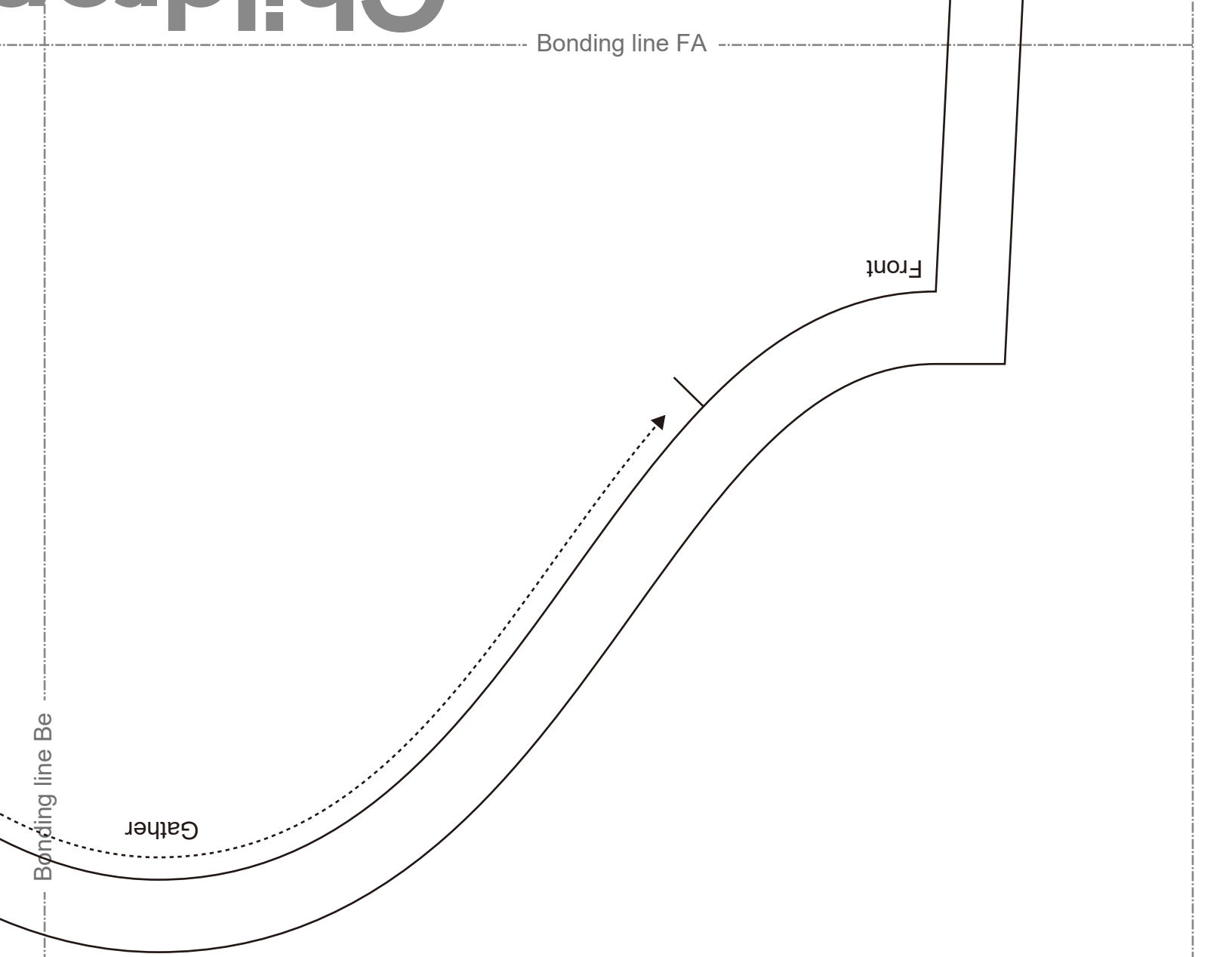
Processed on bias

Gather



Seam allowance 1/2in.

Bonding line FA



Bonding line FB