

Home

Back to westernhat page

Seam allowance 1/2in.

Grain Line

Bonding line Aa

DRCOS

SITE <http://www.dr-cos.info/>
MAIL info@dr-cos.com
Twitter <https://twitter.com/dr-cos>
facebook <https://www.facebook.com/drcoscom>

Westernhat
top
interfacing(her
one s

DR
SITE <http://www.dr-cos.com>
MAIL info@dr-cos.com
Twitter <https://twitter.com/dr-cos>
facebook <https://www.facebook.com/dr-cos>

Bonding line AA

gronnet

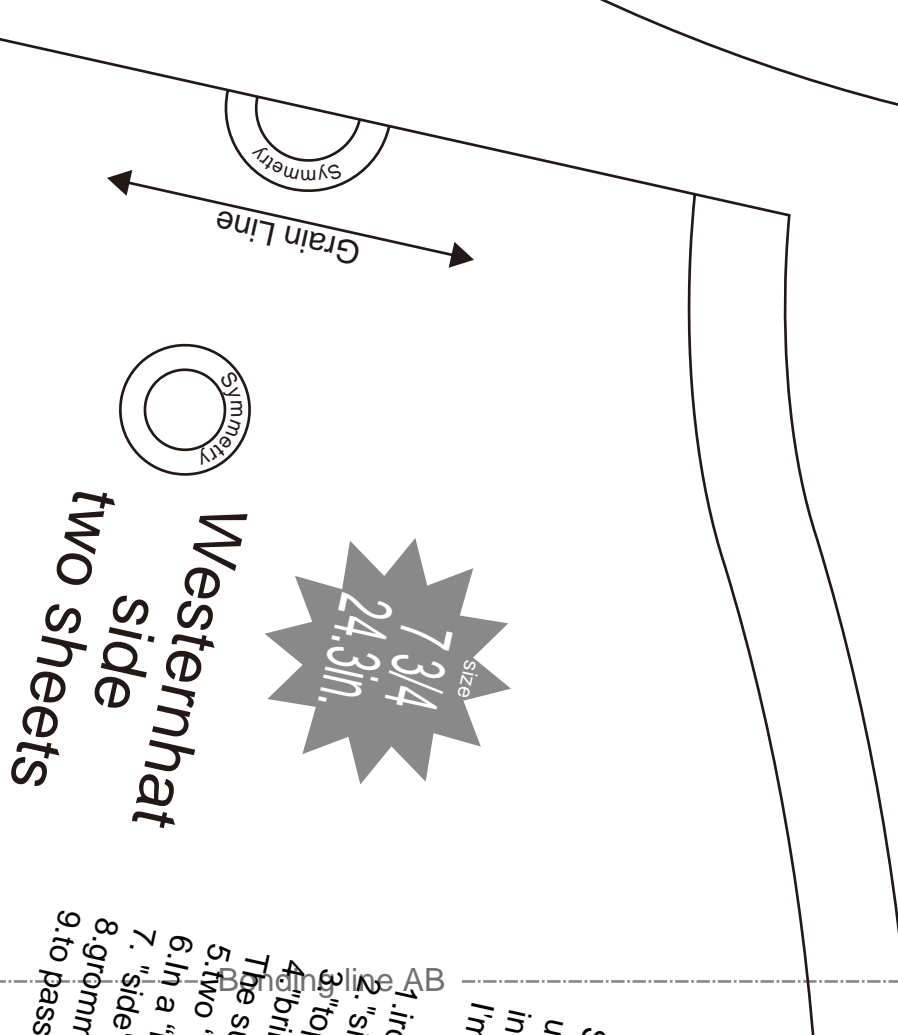
[SITE: http://www.drcos.com](http://www.drcos.com)
[MAIL: info@drcos.com](mailto:info@drcos.com)
[Book: https://www.facebook.com/drcos.com](https://www.facebook.com/drcos.com)

DRCOS

Bonding line AA

size
 $7 \frac{3}{4}$
 24.3in.

Bonding line Ba



Bonding line AB
 1. into
 2. "s"
 3. "to
 4. "brill
 5. Two
 The s
 6. In a
 7. " side
 8. gromm
 9. to pass

Bonding line Ca

How to make

Sorry if I haven't made myself understood (well) in English. You know I'm poor at English.

1. Iron on the interfacing (heavy weight) to "top" "side" "brim"
2. "side" is sewn up and loop
3. "top" and "side" sew pieces
4. "brim" is sewn up and loop
5. Two "brims" are sewn up and the back are same.
6. In a "brim", bias (A wire is put in.)
7. "side" "brim" is sewn up.
8. Grommet is installed in the grommet location.

Seam allowance 1/2in.



Bonding line AC



Bonding line AC

four
brim
Westernha

bias & wire

size
7 3/4
21.31in.

Bonding line Aa

Bonding line Ab

DRCOS

Site: <http://www.drcos.info/>
Mail: info@dr-cos.com
Twitter: https://twitter.com/@drcos_com
Facebook: <https://www.facebook.com/drcoscom>

ernhat
top
g (heavy weight)
one sheets

size
7 3/4

Bonding line BA

size
7 3/4
24.3in.

Bonding line BA

Westernhat
brim
interfacing (heavy weight)
two sheets

Bonding line Ba

Bonding line Bb

DRCOS
SITE <http://www.dr-cos.info/>
MAIL info@dr-cos.com
TWITTER <https://twitter.com/dr-cos>
FACEBOOK <https://www.facebook.com/drcos.com>

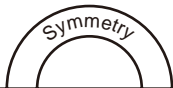
Bonding line BB

at
(heavy weight)

Bonding line Ca

Bonding line BB

Westernhat
Top
two sheets

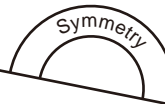
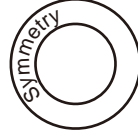


Grain Line



Bonding line BC

Westernhat
side
interfacing (heavy weight
one sheets



Bonding line Cb

Seam allowance 1/2in.