

Seam allowance 1/2in.

- How to make
- Sorry if I haven't made myself understood (well) in English. You know I'm poor at English.
1. Iron on the interfacing (heavy weight) to "Brim"
  2. "side" is sewn up and loop
  3. "top" and "side" sew pieces
  4. "brim" is sewn up and loop
  5. The surface and the back are same.
  6. "side" "brim" is sewn up.

Bonding line Aa

UV Hat  
Brim  
two sheets



Bonding line AA

UV Hat

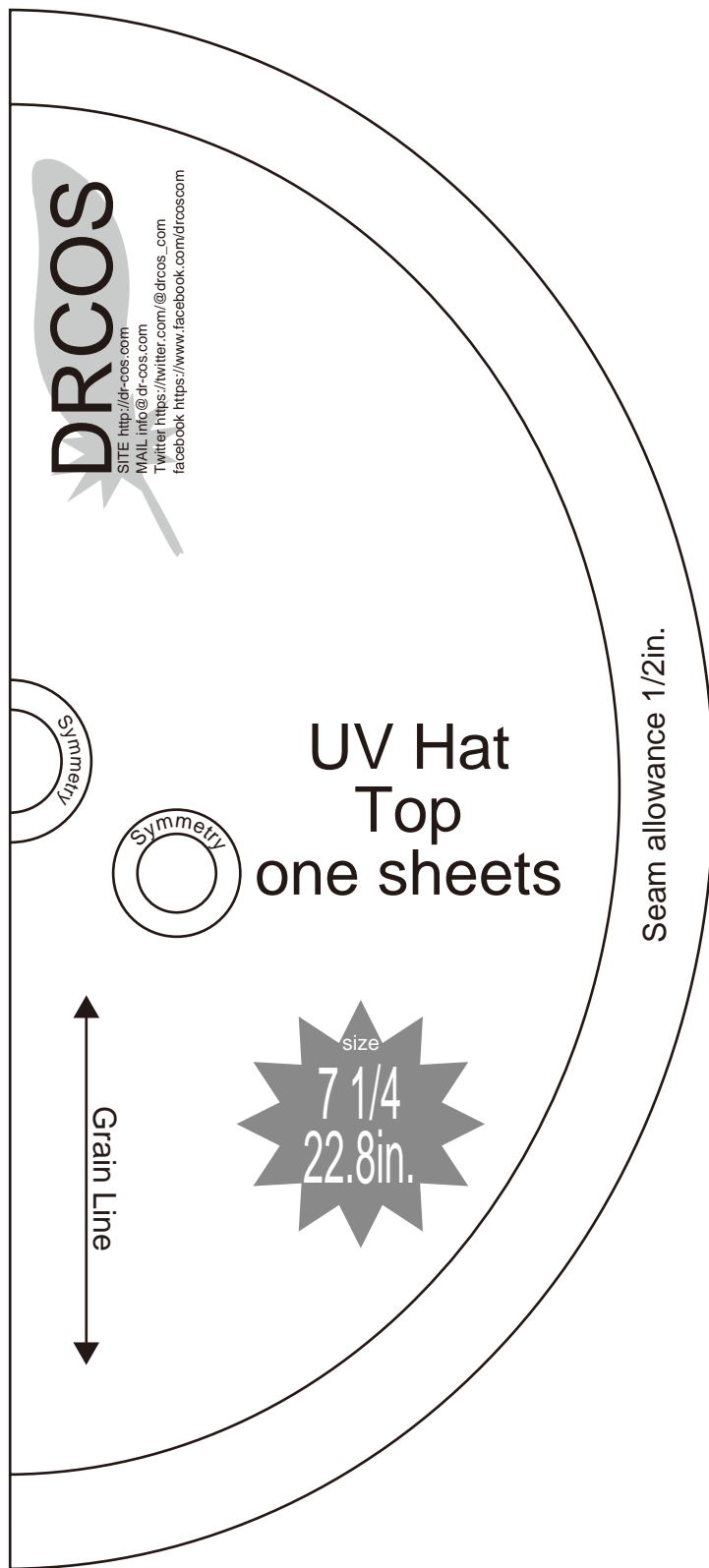
Bonding line AA



Bonding line Ba

Bonding line AB

Bonding line AB



Bonding line AC

Bonding line Ca

Bonding line Aa



**DRCOS**

SITE <http://dr-cos.com>  
MAIL [info@dr-cos.com](mailto:info@dr-cos.com)  
Twitter [@drcos\\_com](https://twitter.com/@drcos_com)  
facebook <https://www.facebook.com/drcoscom>

Bonding line Ab

Bonding line BA

Bonding line BA

Bonding line Ba

Bonding line Bb

SITE <http://dr-cos.com>  
MAIL [info@dr-cos.com](mailto:info@dr-cos.com)  
Twitter [https://twitter.com/drcos\\_com](https://twitter.com/drcos_com)  
facebook <https://www.facebook.com/drcoscom>

**DRCOS**

Bonding line BB

Bonding line Ca

www.oss.com

OS

Bonding line BB



UV Hat  
Side  
one sheets



Seam allowance 1/2in.

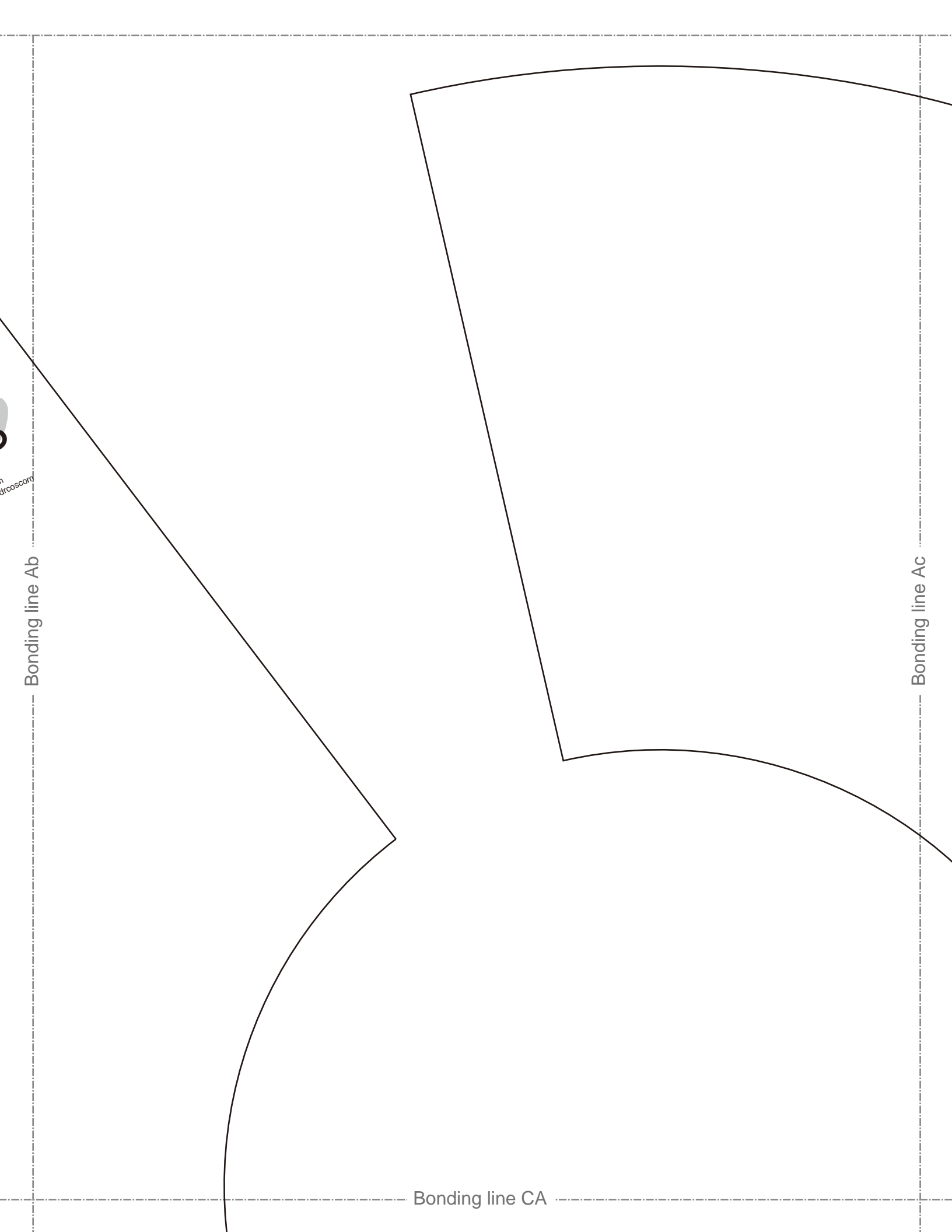
Bonding line BC

Bonding line Cb

Bonding line Ab

Bonding line Ac

Bonding line CA



Bonding line CA

Bonding line Bb

Bonding line Bc

UV H  
Bri  
interfacing(  
one

Bonding line CB

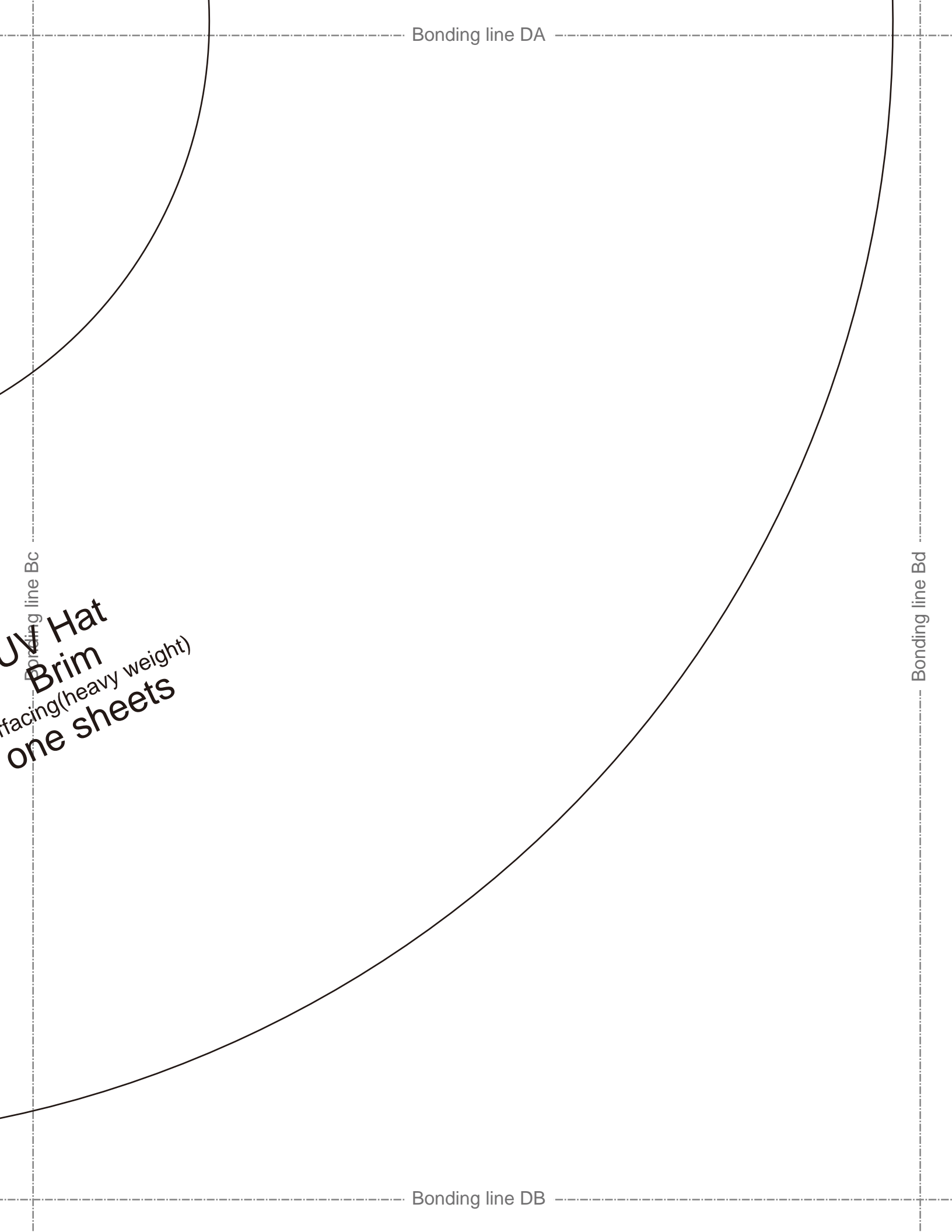


Bonding line Ac

Bonding line Ad

size  
7 1/4  
22.8in.

Bonding line DA



Bonding line DA

Bonding line Bc

**UV Hat**  
**Brim**  
(heavy weight)  
**one sheets**

Bonding line Bd

Bonding line DB