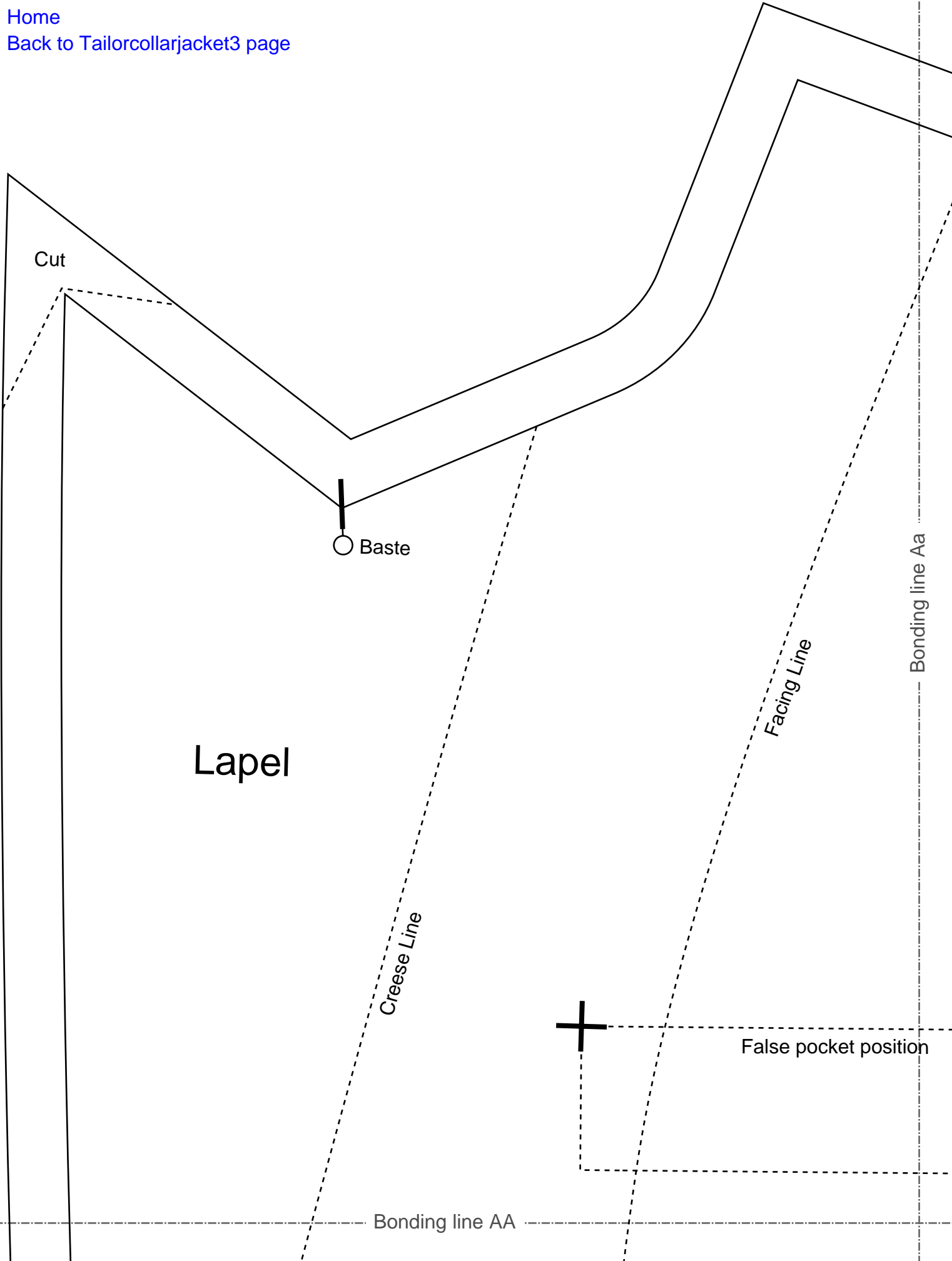


[Home](#)

[Back to Tailorcollarjacket3 page](#)



Cut

Baste

Lapel

Creese Line

Facing Line

Bonding line Aa

Bonding line Aa



False pocket position

Bonding line AA

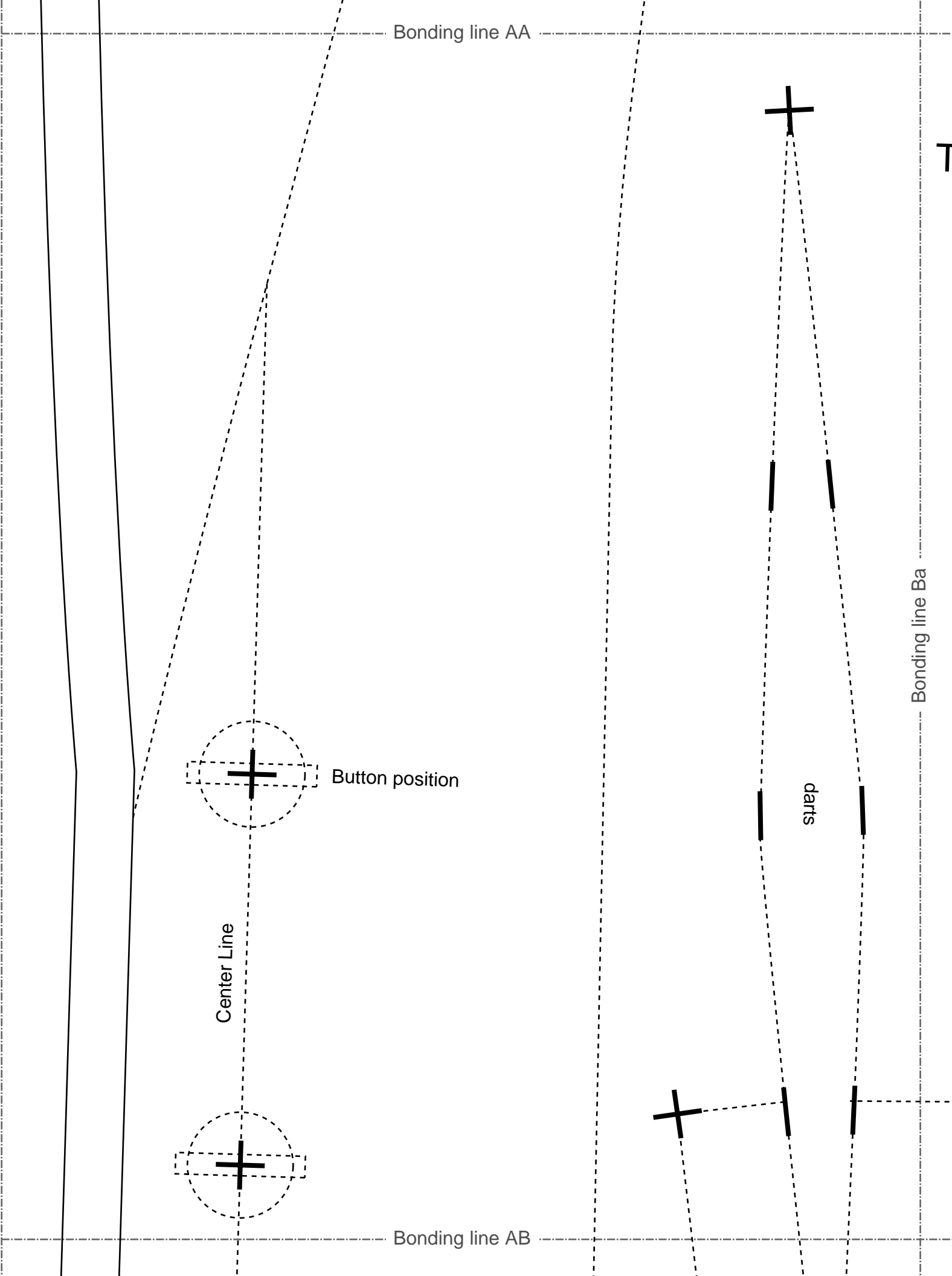
Bonding line AB

Bonding line Ba

Center Line

Button position

dots



Bonding line AB

Seam allowance 1/2in.

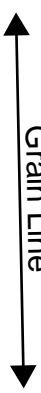


LA

Bonding line Ca

Bonding line AC

Bonding line AC



Bonding line Da

Back Body  
two sheets

Bonding line AD

Tailorcollarjackets3

Bonding line AD

Tailorcollarjackets



Bonding line Ea

Baste



[SITE http://dr-cos.info\(en\)](http://dr-cos.com(fp)) [http://dr-cos.com\(fp\)](http://dr-cos.com(fp))  
[MAIL info@dr-cos.com](mailto:MAIL.info@dr-cos.com)  
[Twitter https://twitter.com/dr-cos\\_com](https://twitter.com/dr-cos_com)  
[facebook https://www.facebook.com/drcoscom](https://www.facebook.com/drcoscom)

**DRCOS**

Bonding line AE

Bonding line AE

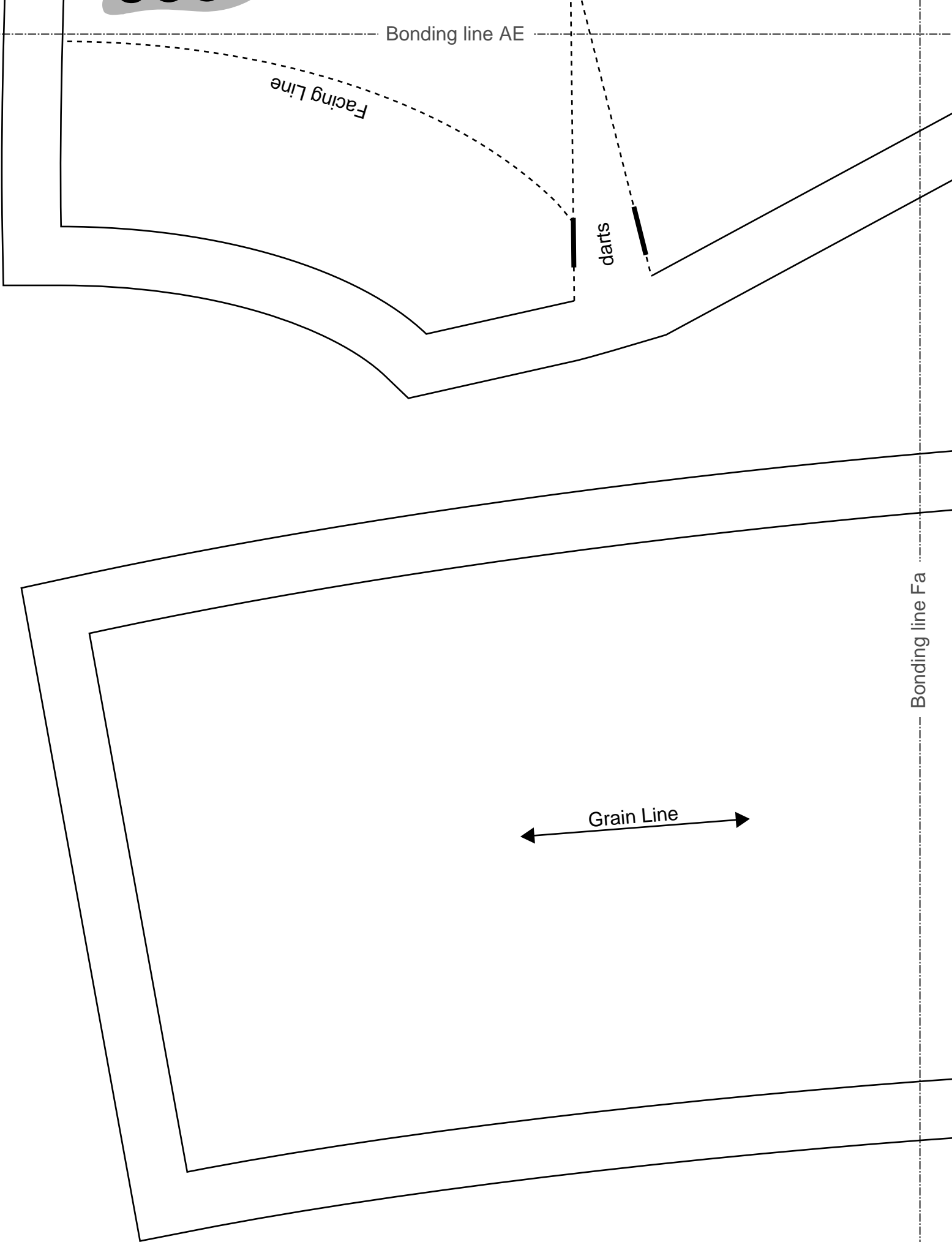
Facing Line

dart

Bonding line Fa

Grain Line

Bonding line AF



Bonding line Aa

sition



**DRCOS**

SITE <http://drcos.info>  
MAIL [info@drcos.com](mailto:info@drcos.com)  
TWITTER [https://twitter.com/drcos\\_com](https://twitter.com/drcos_com)  
FACEBOOK <https://www.facebook.com/drcoscom>

Bonding line BA

Bonding line Ab

Bonding line BA

# Tailorcollarjacket3 Front Body two sheets

Bonding line Ba

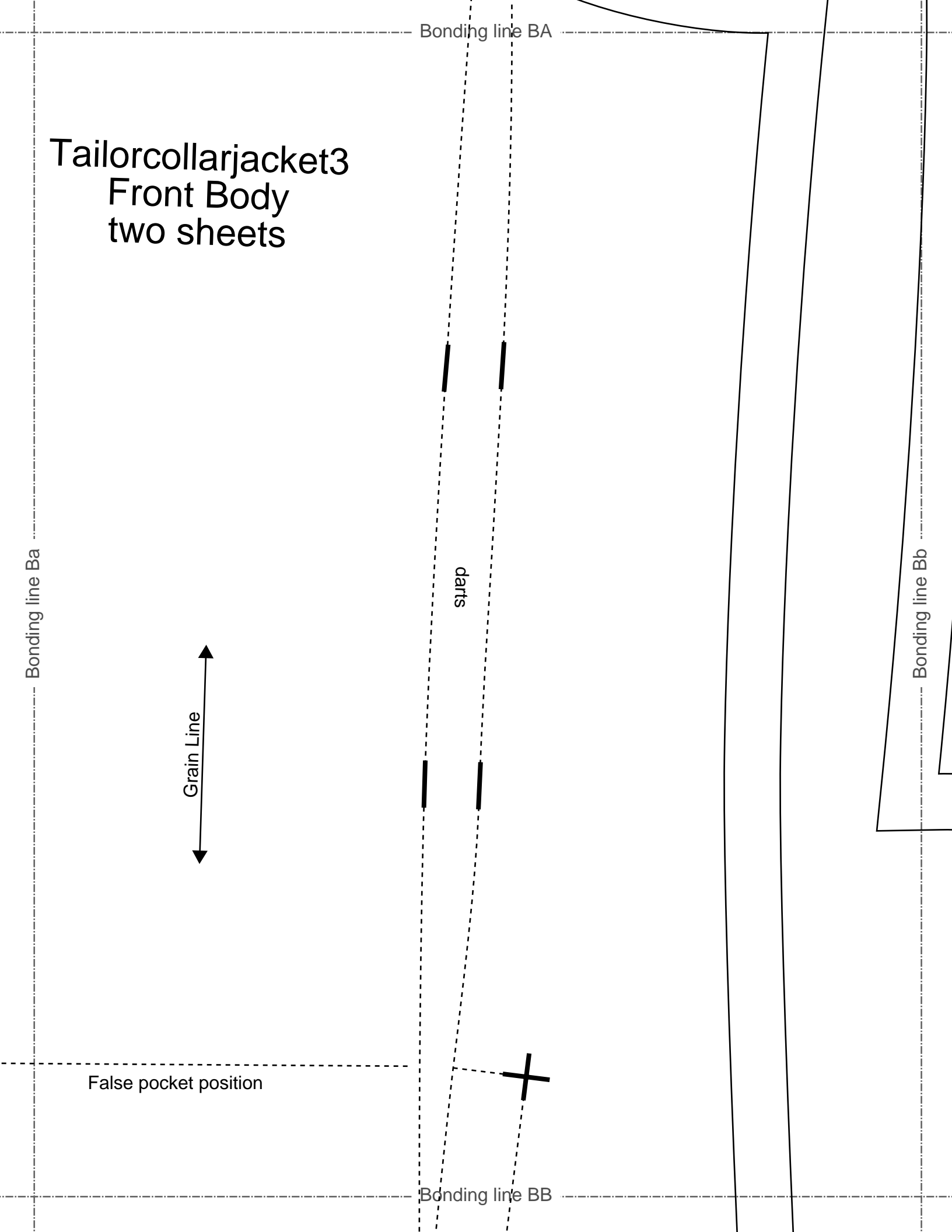


darts

False pocket position

Bonding line BB

Bonding line Bb





Bonding line BB



LADIES'  LL size

Bonding line Ca

Bonding line Cb

Bonding line BC

Bonding line Da

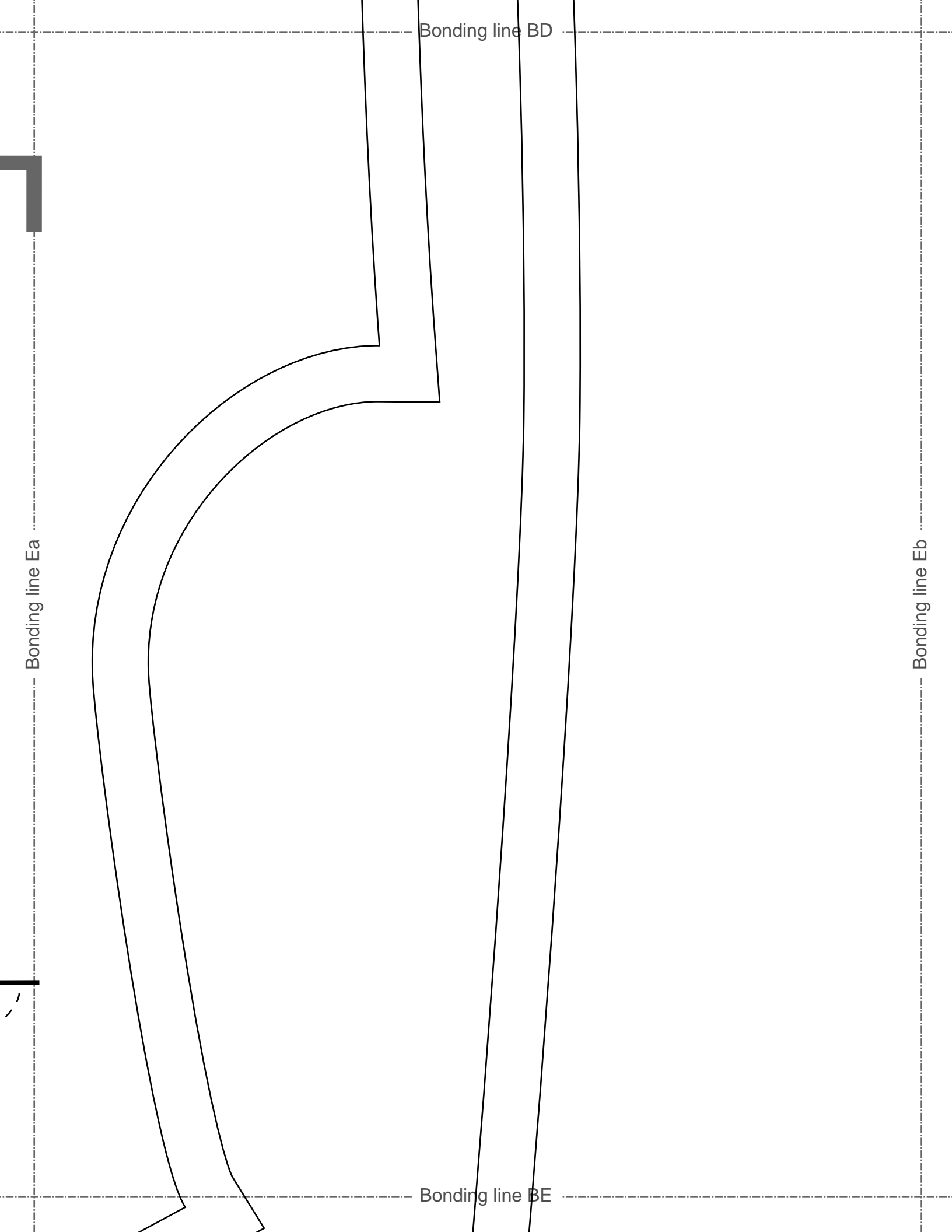
Bonding line BC

Bonding line Db

Seam allowance 1/2in.

Bonding line BD





Bonding line BE

Seam allowance 1/2in.

Bonding line Fa

Bonding line Fb

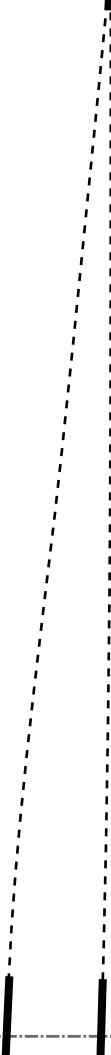
Tailorcollarjackets3  
sleeve  
two sheets

**LADIES' ST**  
size

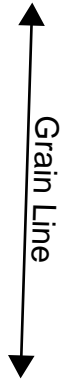
Bonding line BF

# LADIES' size TLT

Bonding line Ab

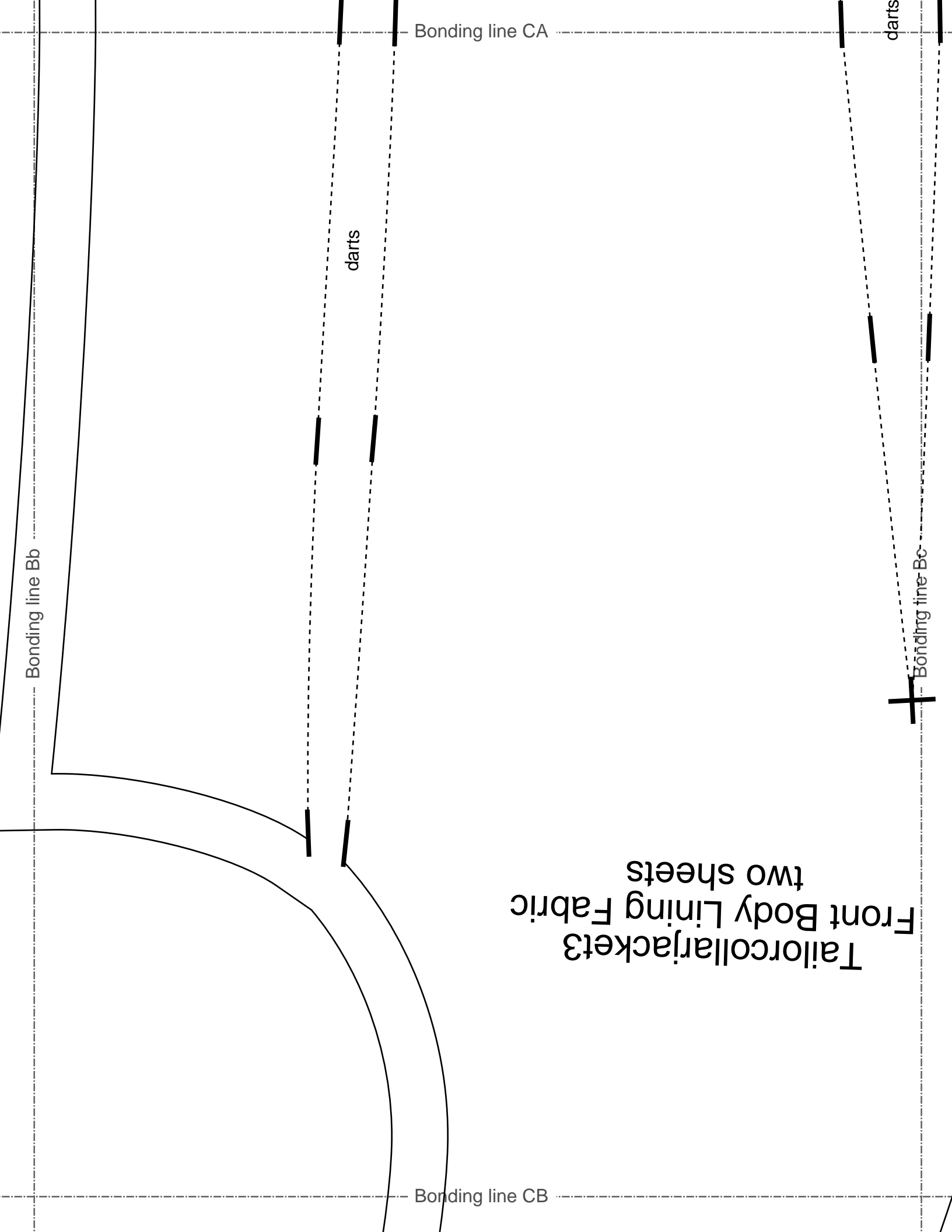


Bonding line CA

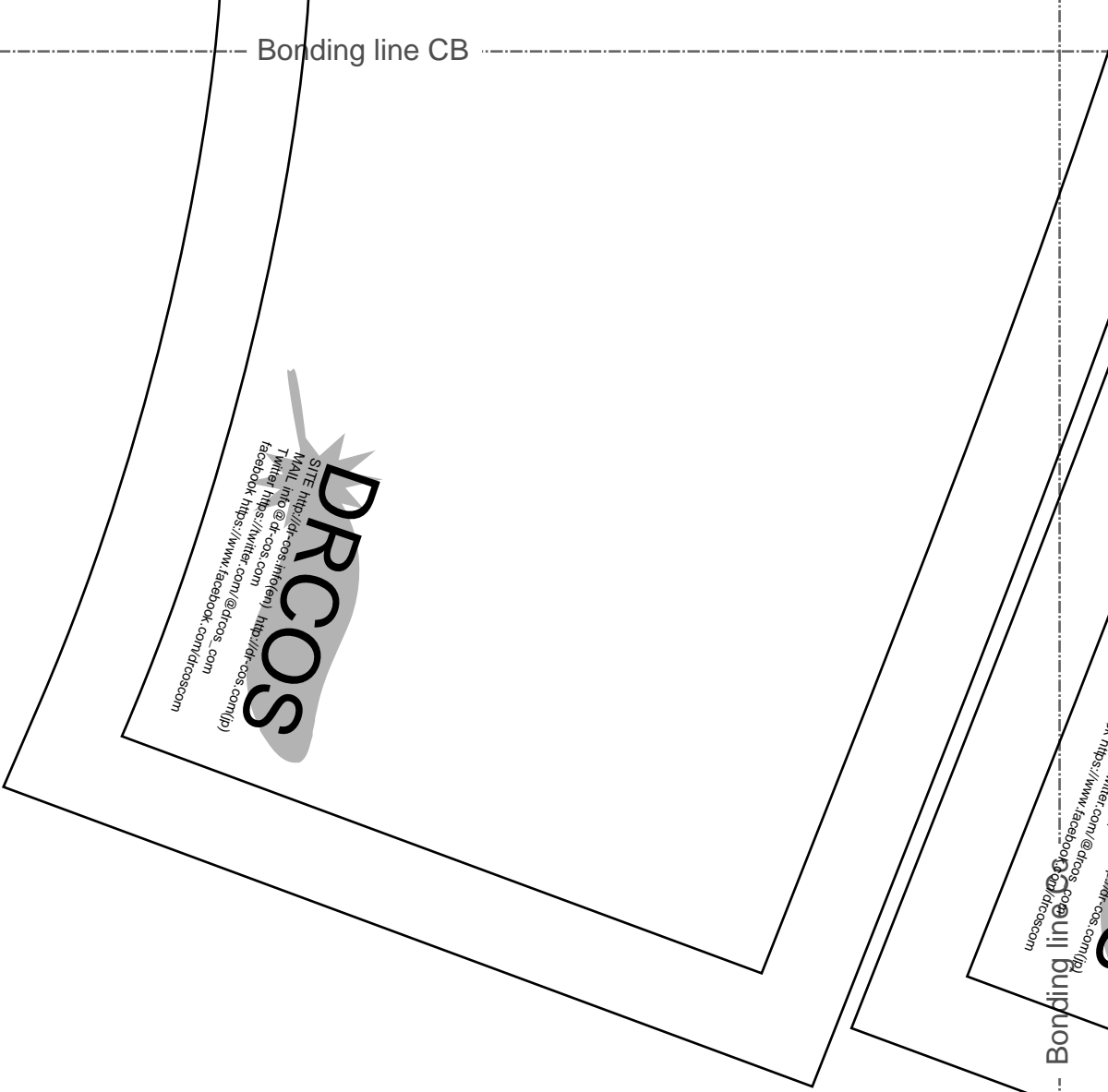


darts

Bonding line Ac

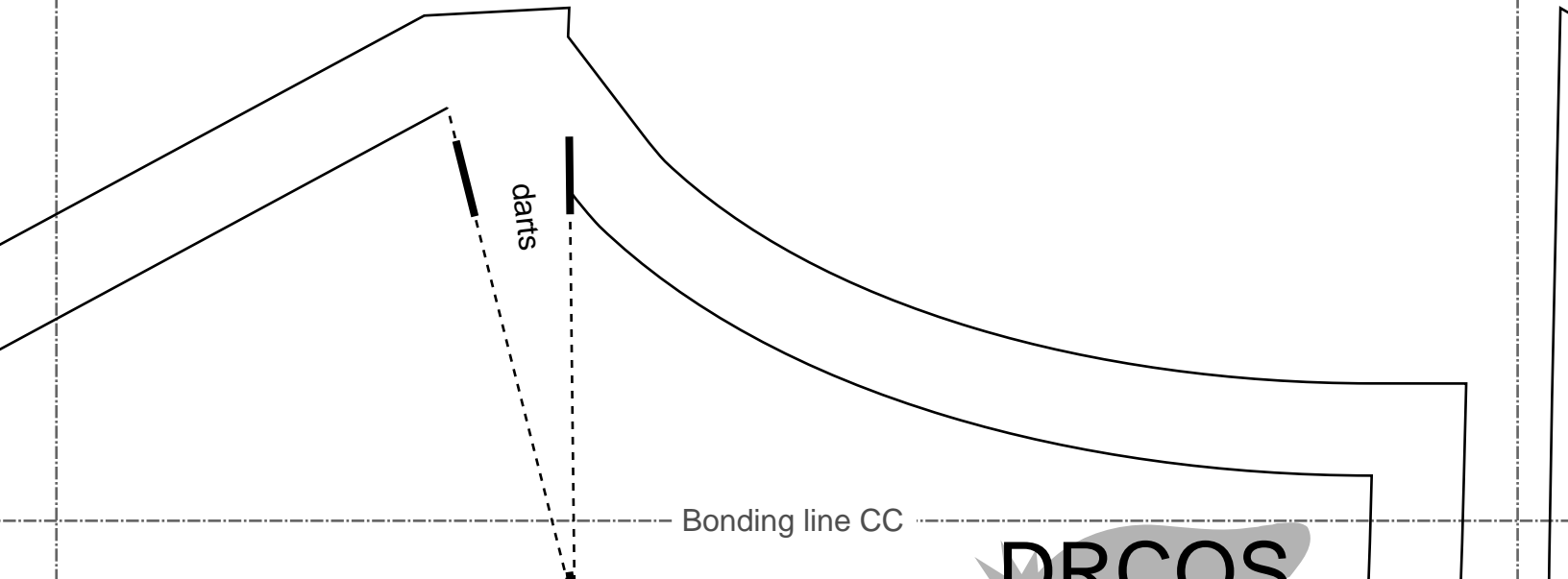


Bonding line CB



Bonding line Cb

Bonding line Cb



Bonding line CC

Bonding line CC



# DRCOS

SITE [http://dr-cos.info\(en\)](http://dr-cos.info(en)) [http://dr-cos.com\(jp\)](http://dr-cos.com(jp))  
MAIL [info@dr-cos.com](mailto:info@dr-cos.com)  
Twitter [https://twitter.com/@drcos\\_com](https://twitter.com/@drcos_com)  
facebook <https://www.facebook.com/drcoscom>

Bonding line Db

Bonding line Dc

Seam allowance 1/2in.

# LADIES' size

## Tailorcollarjacket3 Back Body Side

Bonding line CD



Tailorcollarjacket3  
Back Body Side  
two sheets

Bonding line CD

Bonding line Eb

Bonding line Ec



Bonding line CE

Bonding line CE

Bonding line Fb

Bonding line Fc



Bonding line CF

parts

Bonding line Ac

Seam allowance 1/2in.

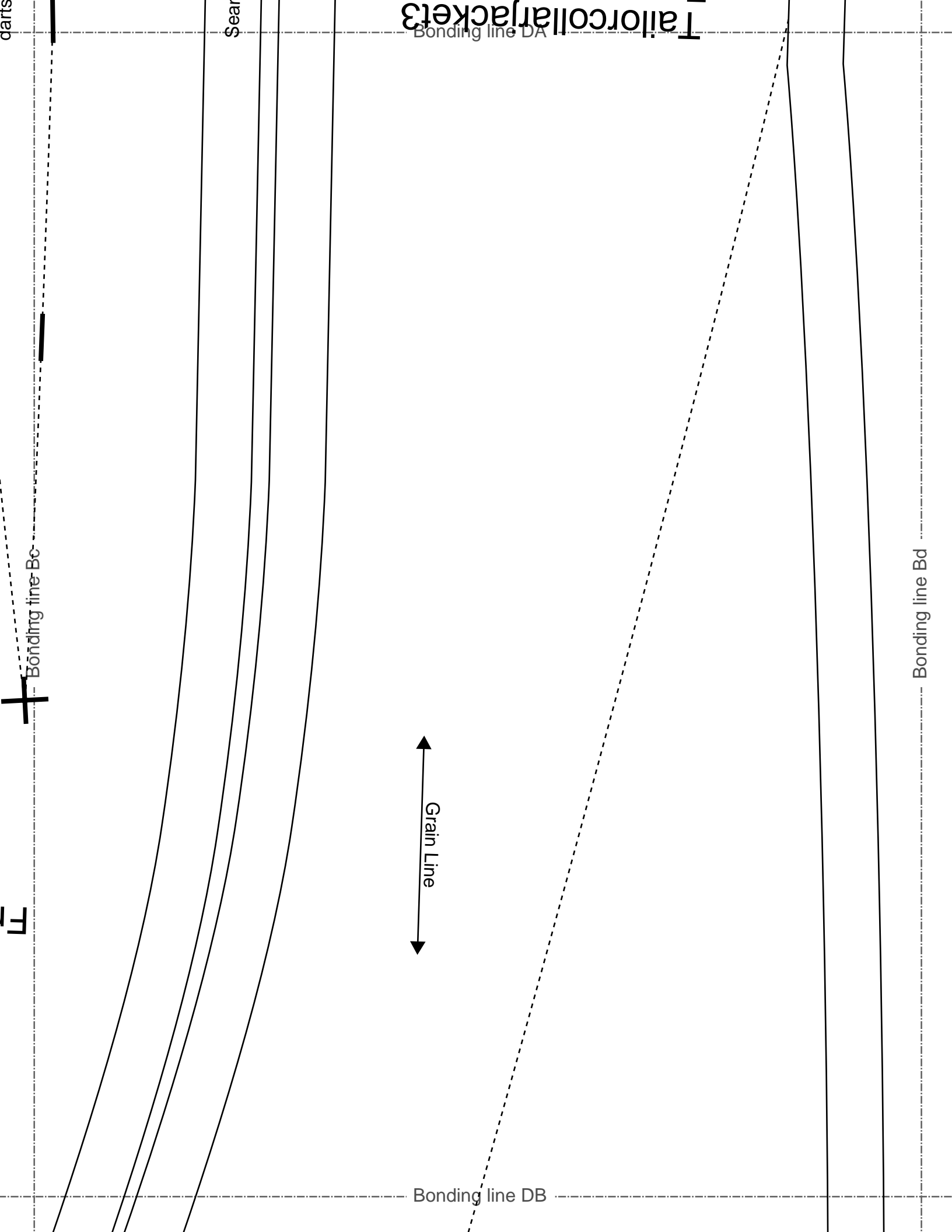
Tailor collar jackets  
Front Body Facing  
two sheets

Bonding line DA



Seam allowance 1/2in.

Bonding line Ad



Bonding line DB

Cut

Bonding line Cd

shirring sewing



Bonding line Ca

Bonding line DC

Bonding line DC

Bonding line Dc

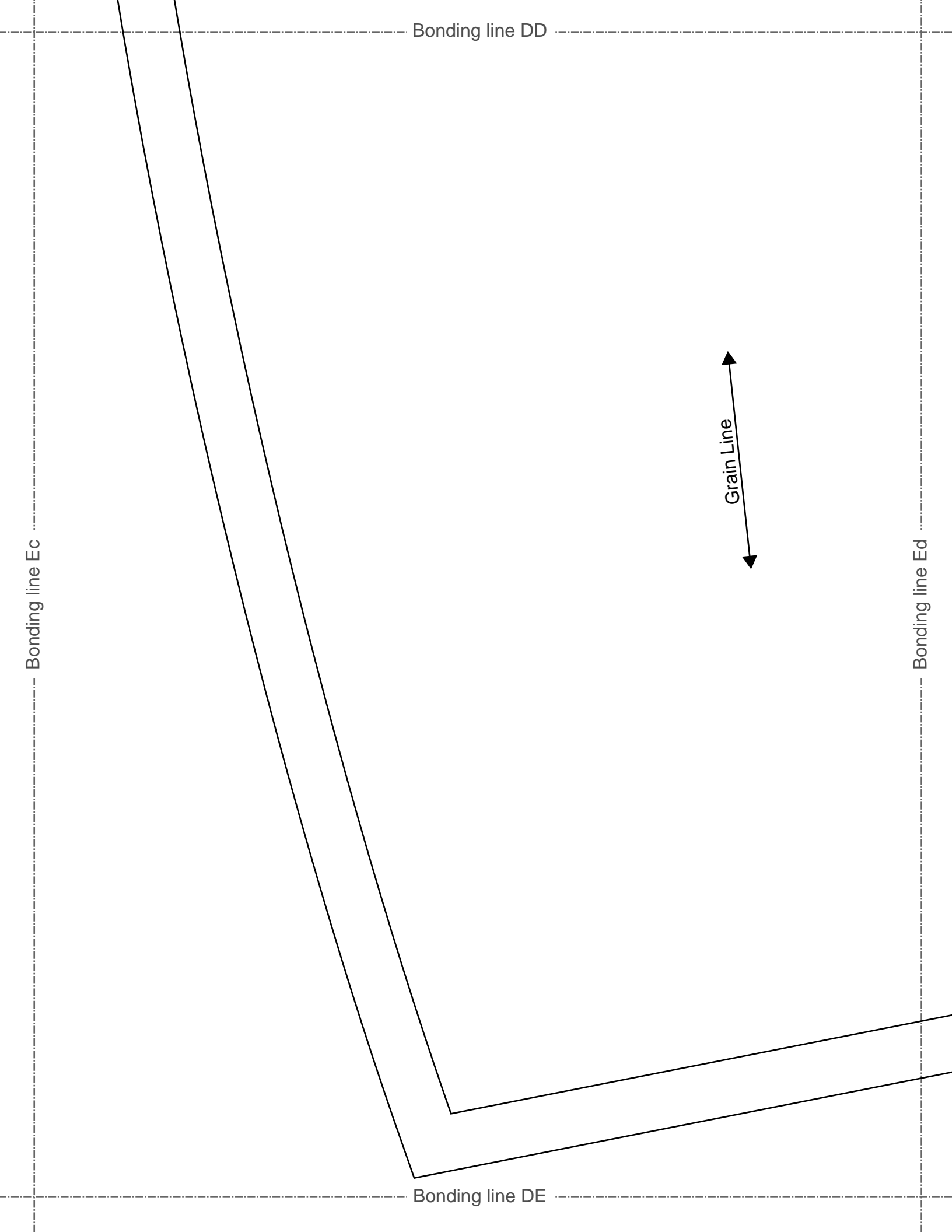
LADIES' **LL** size

Bonding line Dd

Tailorcollarjacket3  
sleeve  
two sheets

Seam allowance 1/2in.

Bonding line DD



Bonding line DD

Bonding line Ec

Bonding line Ed

Grain Line

Bonding line DE

Seam allowance 1/2in.

**DRCOS**

SITE [http://dr-cos.info\(en\)](http://dr-cos.info(en)) [http://dr-cos.com\(jp\)](http://dr-cos.com(jp))

MAIL [info@dr-cos.com](mailto:info@dr-cos.com)

Twitter [@drcos\\_com](https://twitter.com/@drcos_com)

facebook <https://www.facebook.com/drcoscom>

Grain Line

Tailorcollarjacket3  
False pocket  
two sheets

Seam allowance 1/2in.

**DRCOS**

SITE [http://dr-cos.info\(en\)](http://dr-cos.info(en)) [http://dr-cos.com\(jp\)](http://dr-cos.com(jp))

MAIL [info@dr-cos.com](mailto:info@dr-cos.com)

Twitter [@drcos\\_com](https://twitter.com/@drcos_com)

facebook <https://www.facebook.com/drcoscom>

Grain Line

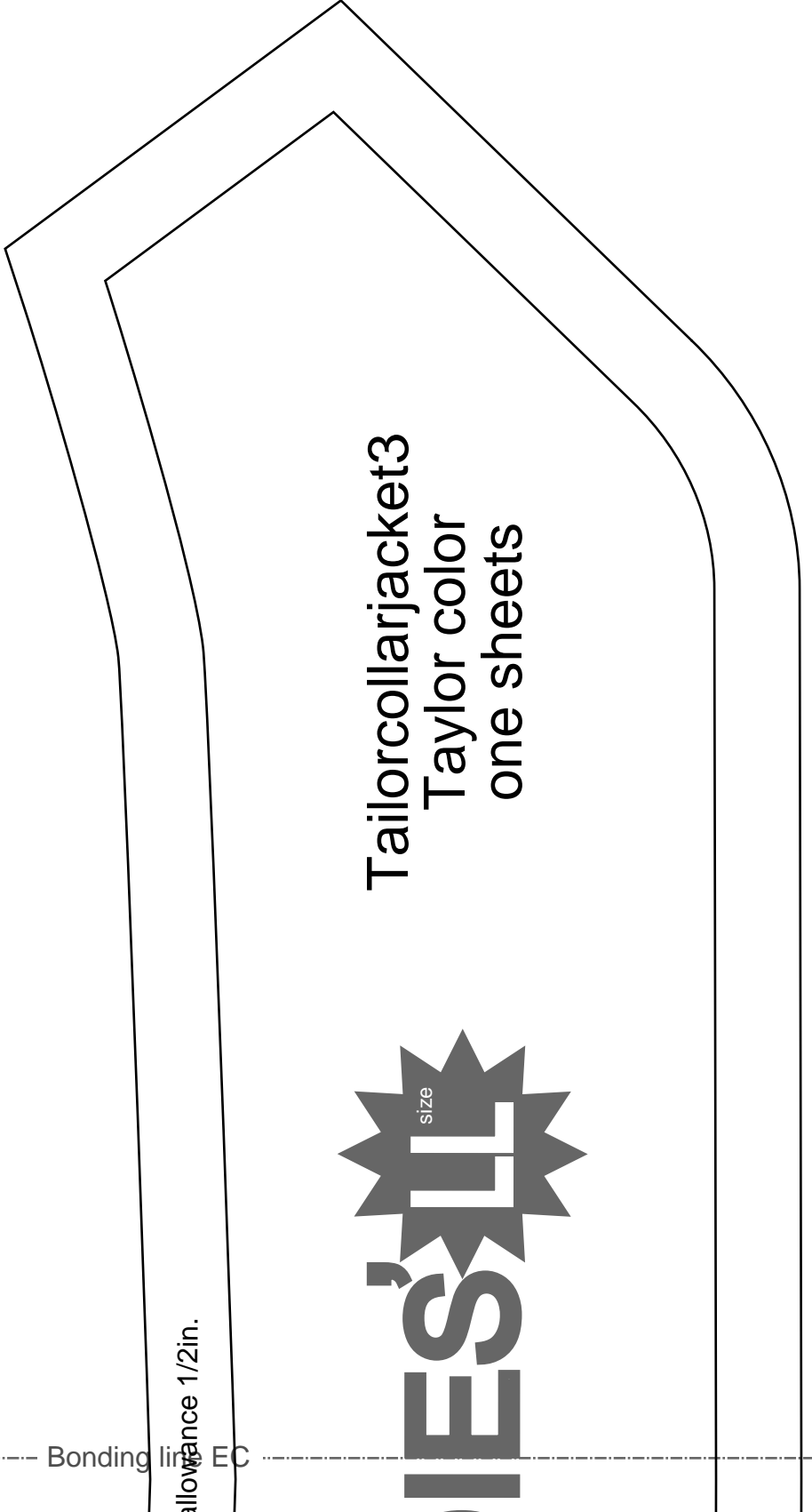
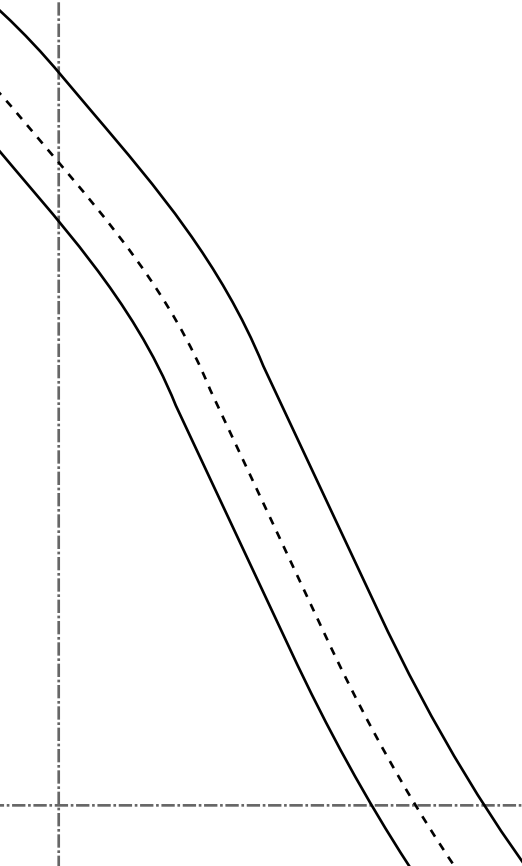
Tailorcollarjacket3  
False pocket  
one sheets



Bonding line EB

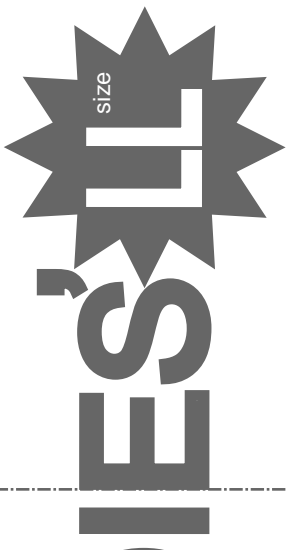
Bonding line Cd

Bonding line Ce



allowance 1/2in.

Bonding line EC



Tailorcollarjacket3  
 Taylor color  
 one sheets

Bonding line Dd

Bonding line EC

Seam allowance

Grain Line

**DRCOS**

SITE <http://dr-cos.info/en> <http://dr-cos.com/jp>

MAIL [info@dr-cos.com](mailto:info@dr-cos.com)

Twitter [@drcos\\_com](https://twitter.com/@drcos_com)

facebook <https://www.facebook.com/drcoscom>

LADIE

Bonding line De

Bonding line ED

Bonding line ED

Bonding line Ed

Bonding line Ee

Grain Line

# Tailorcollarjackets3 Facing One sheets

Seam allowance 1/2in.



Bonding line EE