

Home

[Back to Sailorcollarblouse page](#)

Back

Grain Line

Bonding line Aa

Collar line position

Bonding line AA

LADIES'S

size

**DRCOS**

SITE <http://dr-cos.info/en> <http://dr-cos.com/jp>

MAIL [info@dr-cos.com](mailto:info@dr-cos.com)

Twitter [@drcos\\_com](https://twitter.com/@drcos_com)

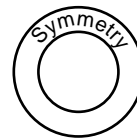
facebook <https://www.facebook.com/drcoscom>



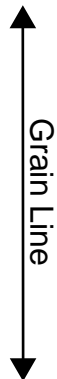
Bonding line AA

# LADIE

Sailorcollar blouse  
Collar line  
two sheets  
Fusible one



Seam allowance 1/2in.

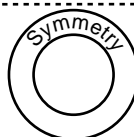


Cut

Seam allowance

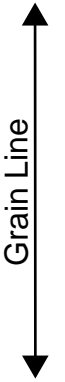
Bonding line Ba

Sailorcollar blouse  
Collar line  
one sheets



Bonding line AB

Seam allowance 1/2in.



Sailorcollarblouse  
Sleeve  
two sheets



Bonding line Aa

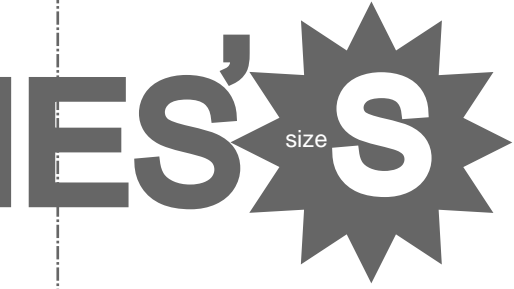
Bonding line Ab

Facebook <https://www.facebook.com/drcos.com>  
Twitter [https://twitter.com/drcos\\_com](https://twitter.com/drcos_com)  
MAIL [info@drcos.com](mailto:info@drcos.com)  
SITE <http://drcos.info/en> <http://drcos.com/fr>

**DRCOS**

Bonding line BA

Bonding line BA



or collar blouse  
Collar  
two sheets  
sible interlining  
one sheets

Bonding line Ba



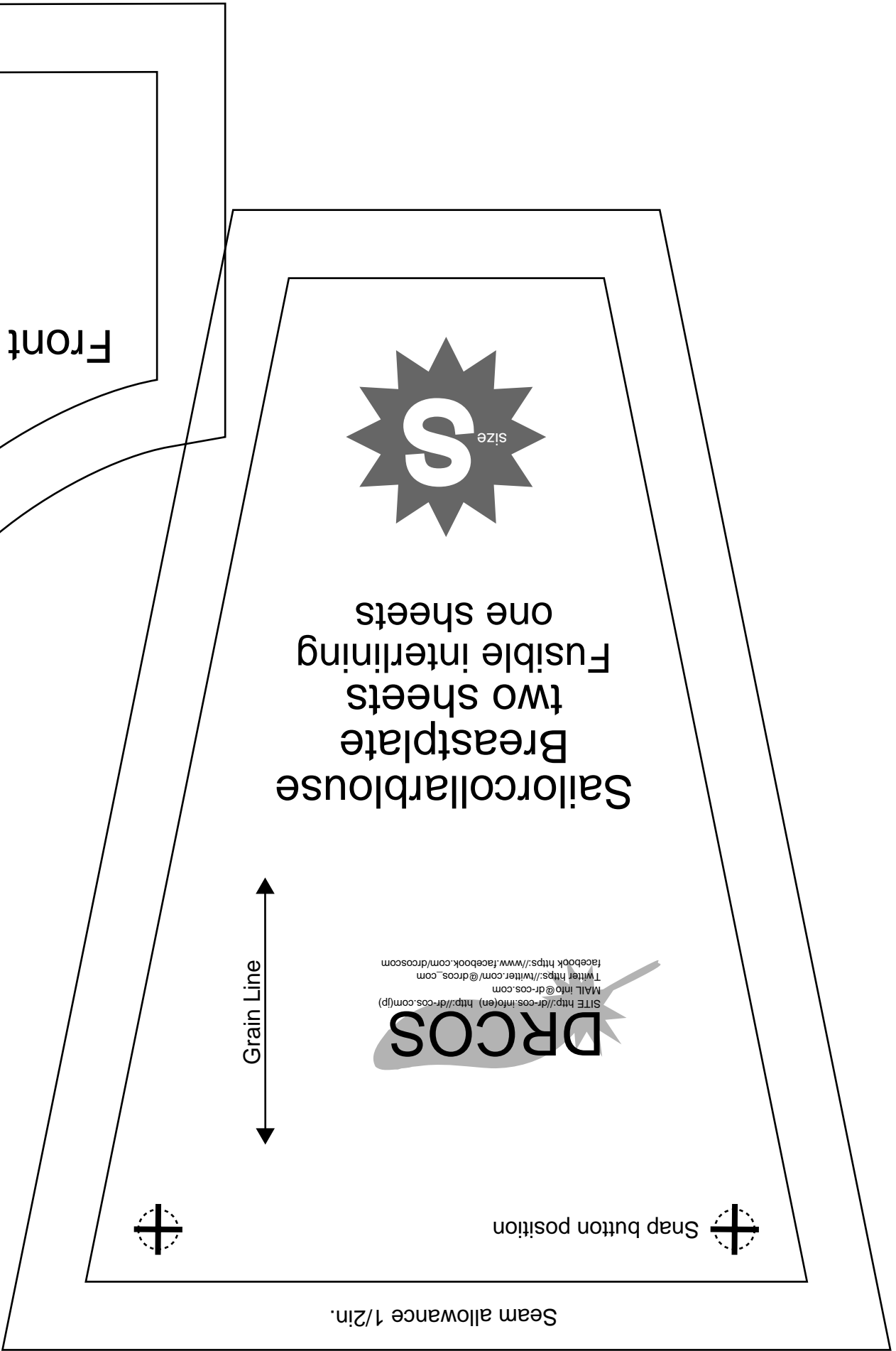
Bonding line Bb

allowance 1/2in.

se



Bonding line BB



Front



Sailor collar blouse  
 Breastplate  
 two sheets  
 Fusible interlining  
 one sheets



**DRCOS**  
 SITE <http://drcos.info/en> [http://drcos.com\(fp\)](http://drcos.com(fp))  
 MAIL [info@drcos.com](mailto:info@drcos.com)  
 Twitter <https://twitter.com/drcos.com>  
 facebook <https://www.facebook.com/drcos.com>

Snap button position



Seam allowance 1/2in.

Bonding line Ab

Bonding line Ac

Bonding line CA

Bonding line Ac

**DRCOS**

SITE <http://dr-cos.info/en> <http://dr-cos.com/jp>

MAIL [info@dr-cos.com](mailto:info@dr-cos.com)

Twitter [@drcos\\_com](https://twitter.com/@drcos_com)

facebook <https://www.facebook.com/drcos.com>

Snap button position



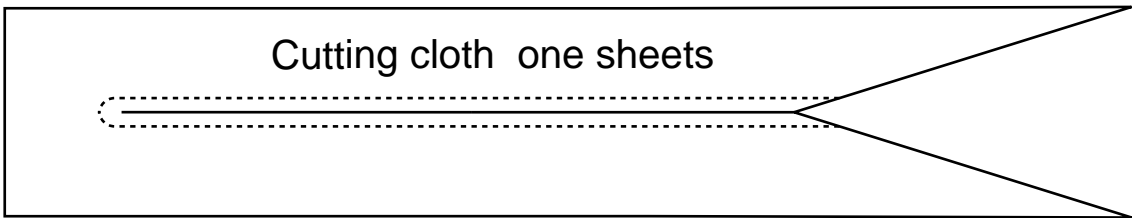
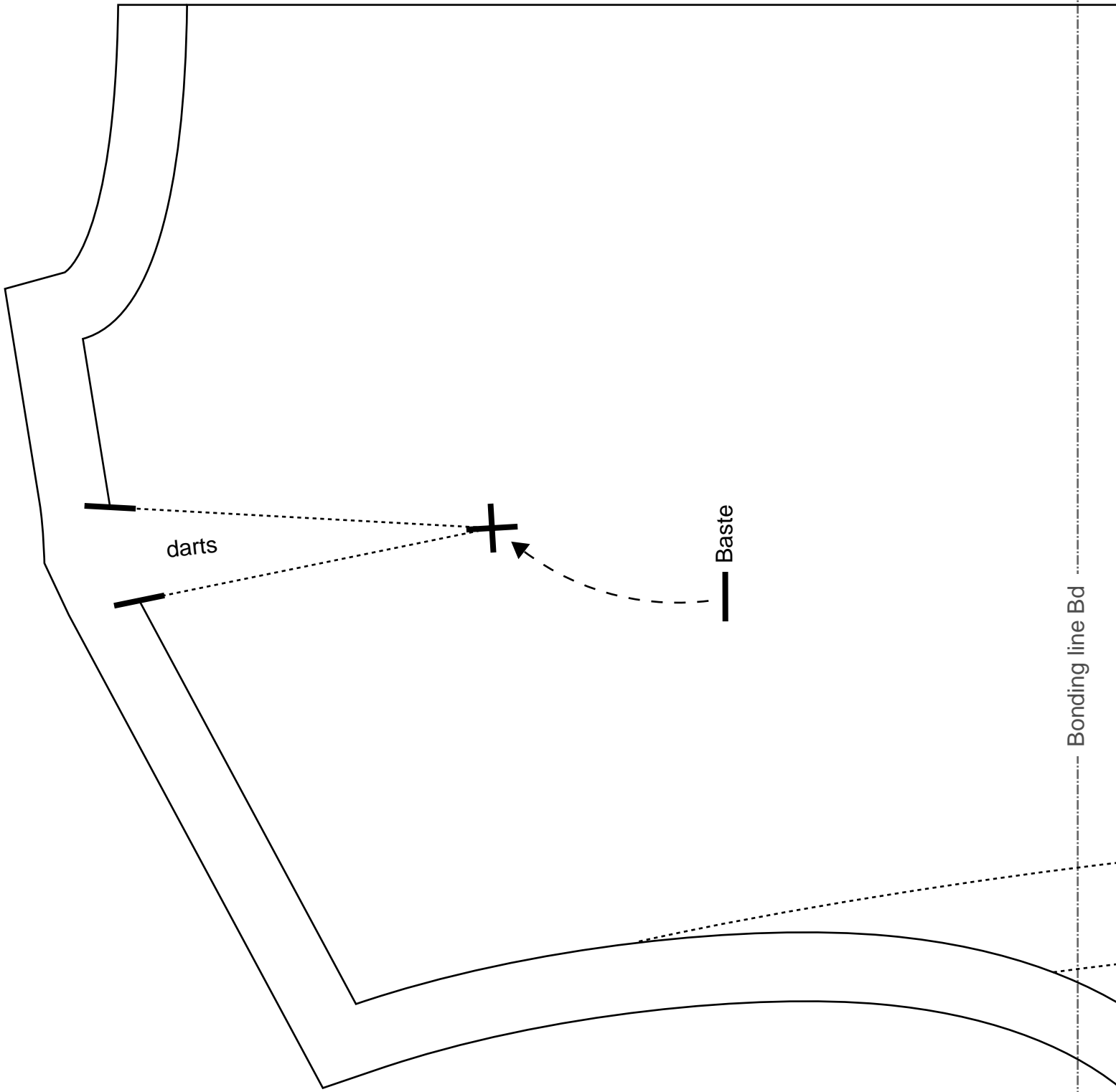
Bonding line Ad

Bonding line DA

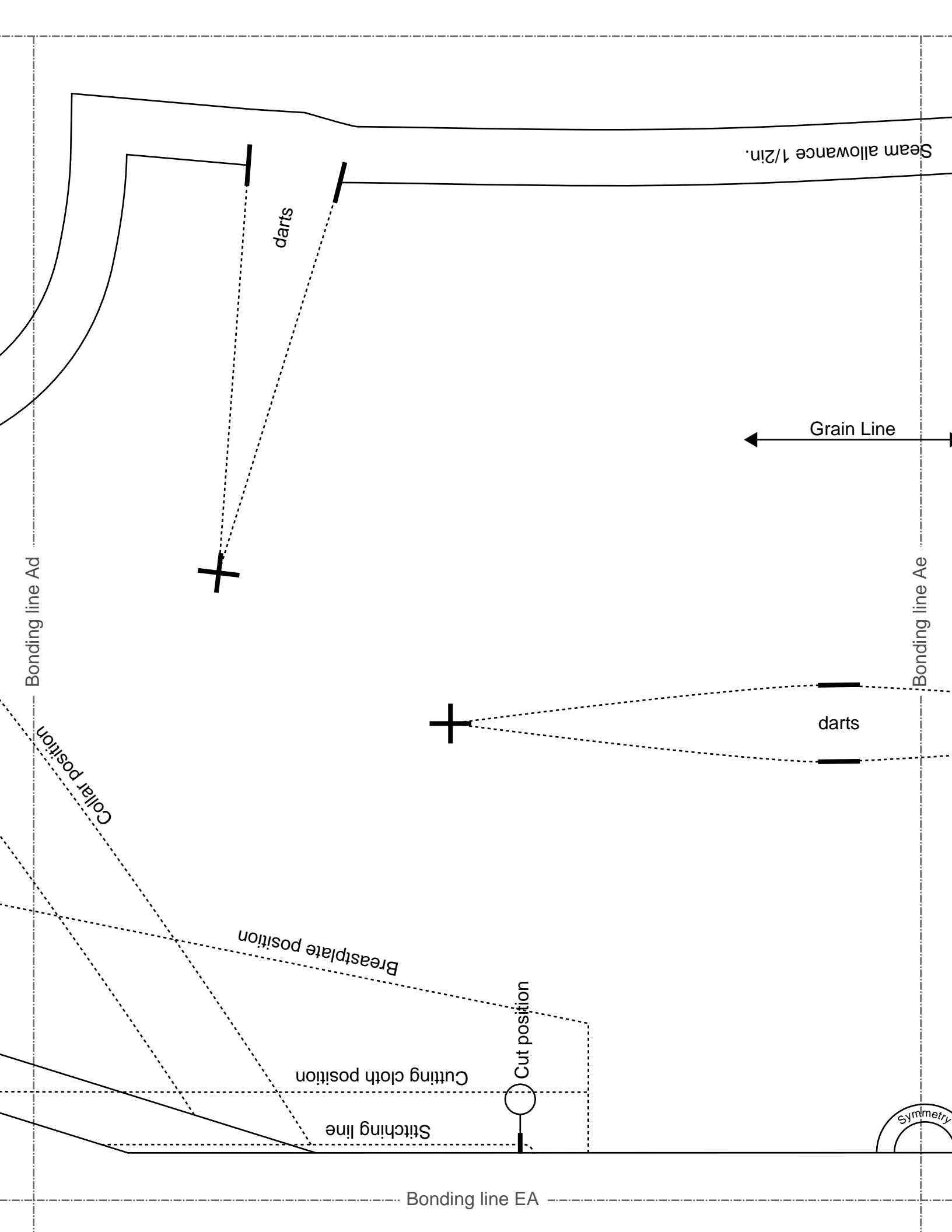
Bonding line DA

Bonding line Bc

Bonding line Bd



Bonding line DB





Bonding line EA



LADIES'S  
size  
S



darts

Grain Line

Seam allowance 1/2in

Bonding line EB

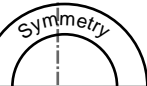
Bonding line Bd

Bonding line Be

Seam

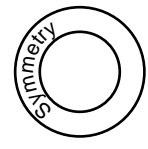
e

Bonding line Ae



# LADIES'S <sup>size</sup>

Sailorcollarblouse  
Front Body  
one sheets



Bonding line FA

Bonding line Af

Bonding line Be



nce 1/2in.



Sailorcollarblouse  
Back Body  
one sheets



**DRCOS**

SITE <http://dr-cos.info/en> <http://dr-cos.com/jp>  
MAIL [info@dr-cos.com](mailto:info@dr-cos.com)  
Twitter [https://twitter.com/dr-cos\\_com](https://twitter.com/dr-cos_com)  
facebook <https://www.facebook.com/drcoscom>