

[Home](#)
[Back to Narrowcourt page](#)

The logo for DRCOS features the company name in a bold, sans-serif font. To the left of the text is a stylized graphic consisting of several overlapping, curved shapes that resemble a globe or a cluster of spheres. The background behind the text is a light gray, irregular shape.

DRCOS

SITE [http://dr-cos.info\(en\)](http://dr-cos.info(en)) [http://dr-cos.com\(jp\)](http://dr-cos.com(jp))
MAIL info@dr-cos.com
Twitter [@drcos_com](https://twitter.com/@drcos_com)
facebook <https://www.facebook.com/drcoscom>

Bonding line AA

Bonding line Aa

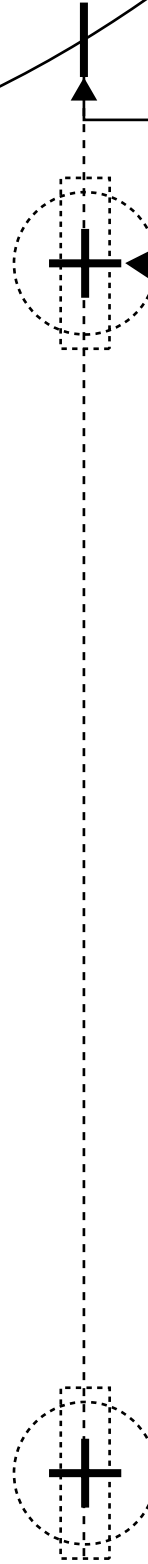
LADIES'S
size

Bonding line AA

Collar position

Bonding line Ba

Bonding line AB

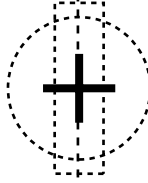


Seam allowance 1/2in.

Narrowcoat
Front body facing
two sheets
Fusible interlining
two sheets

Bonding line AB

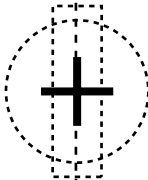
Bonding line AC



Center position

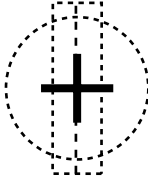
Bonding line Ca

Bonding line AC



Grain Line

Bonding line AD

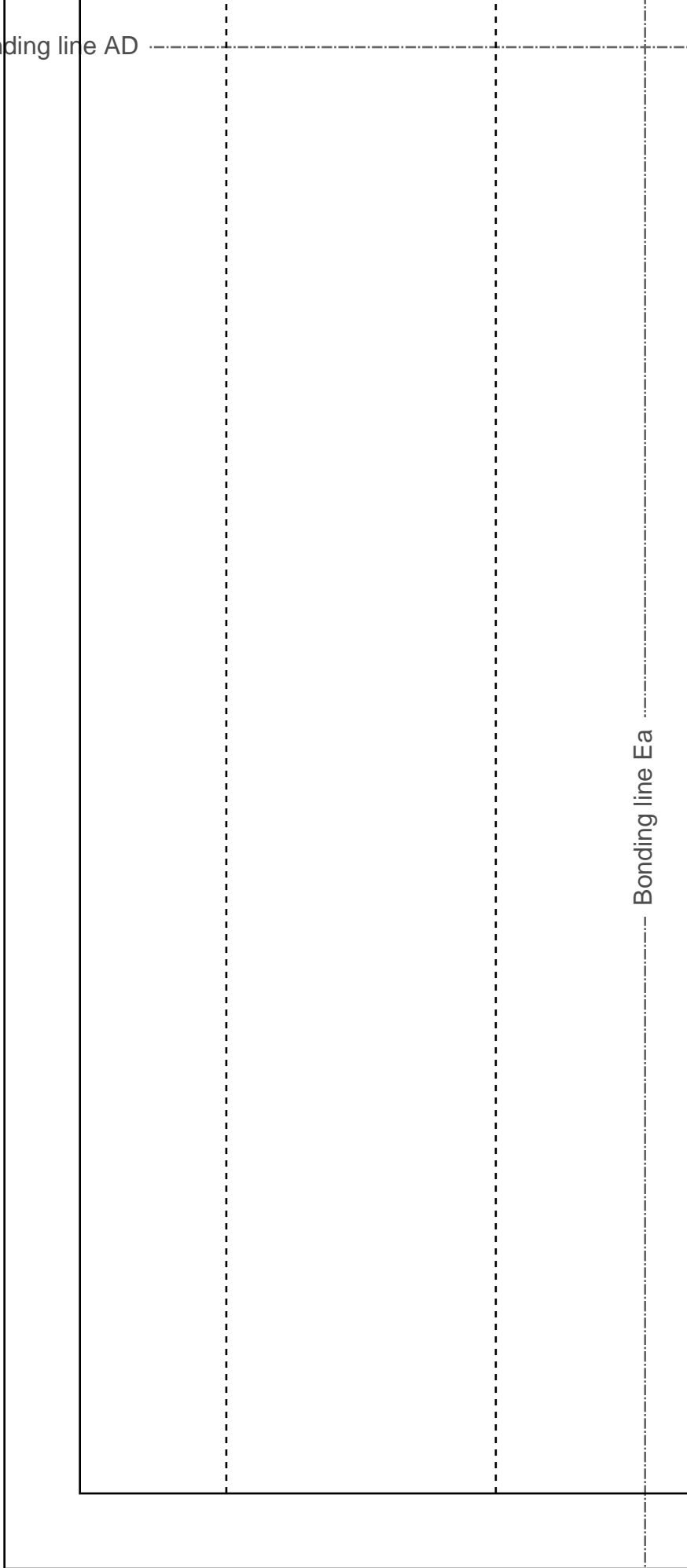
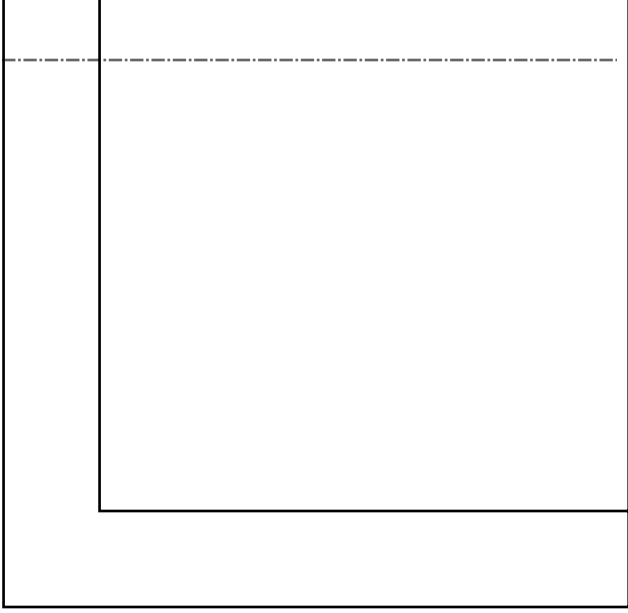


Bonding line Da

Bonding line AD

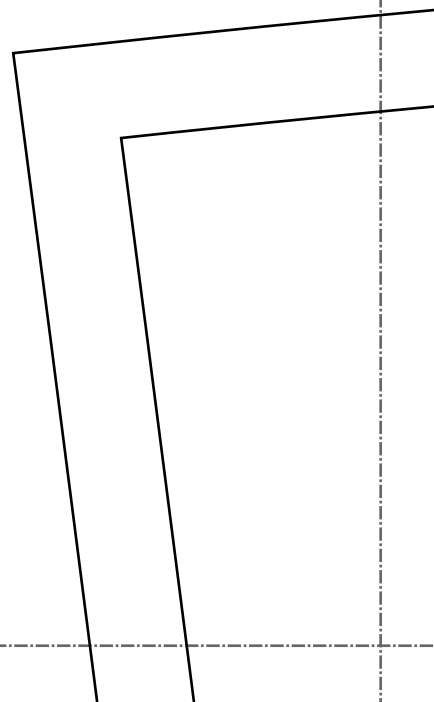
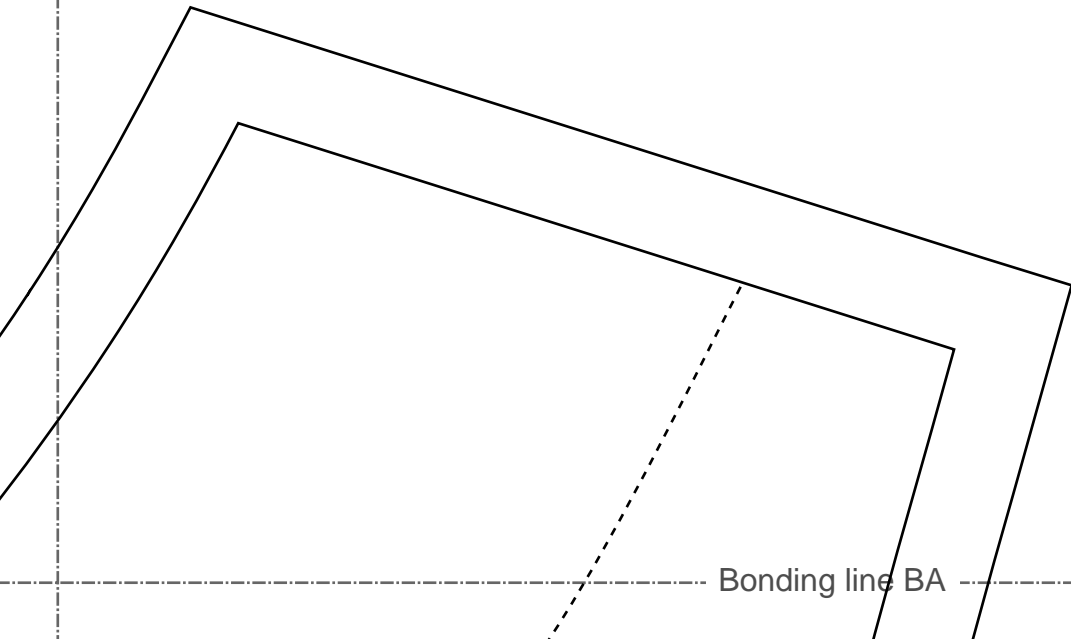
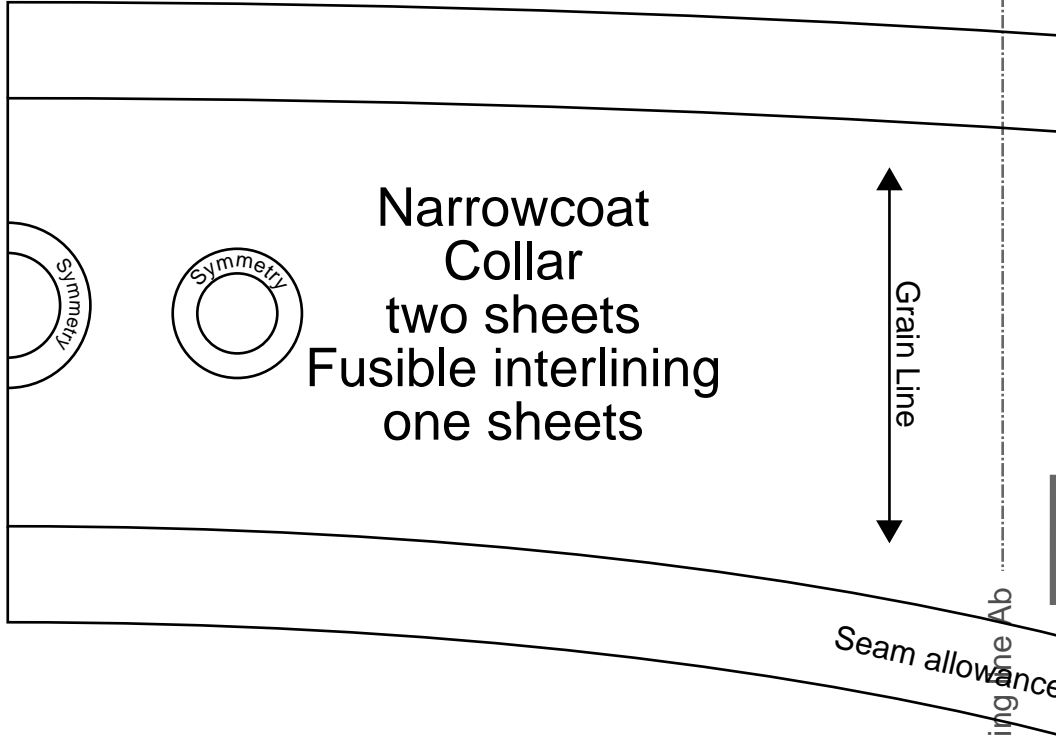
Bonding line AE

Bonding line Ea





Bonding line Aa



Bonding line BA

Facing Line

Baste

Bonding line Ba

Bonding line Bb

DRCOS

SITE [http://dr-cos.info\(en\)](http://dr-cos.info(en)) [http://dr-cos.com\(jp\)](http://dr-cos.com(jp))
MAIL info@dr-cos.com
Twitter https://twitter.com/@drcos_com
facebook <https://www.facebook.com/drcoscom>

Bonding line BB

Bonding line BB

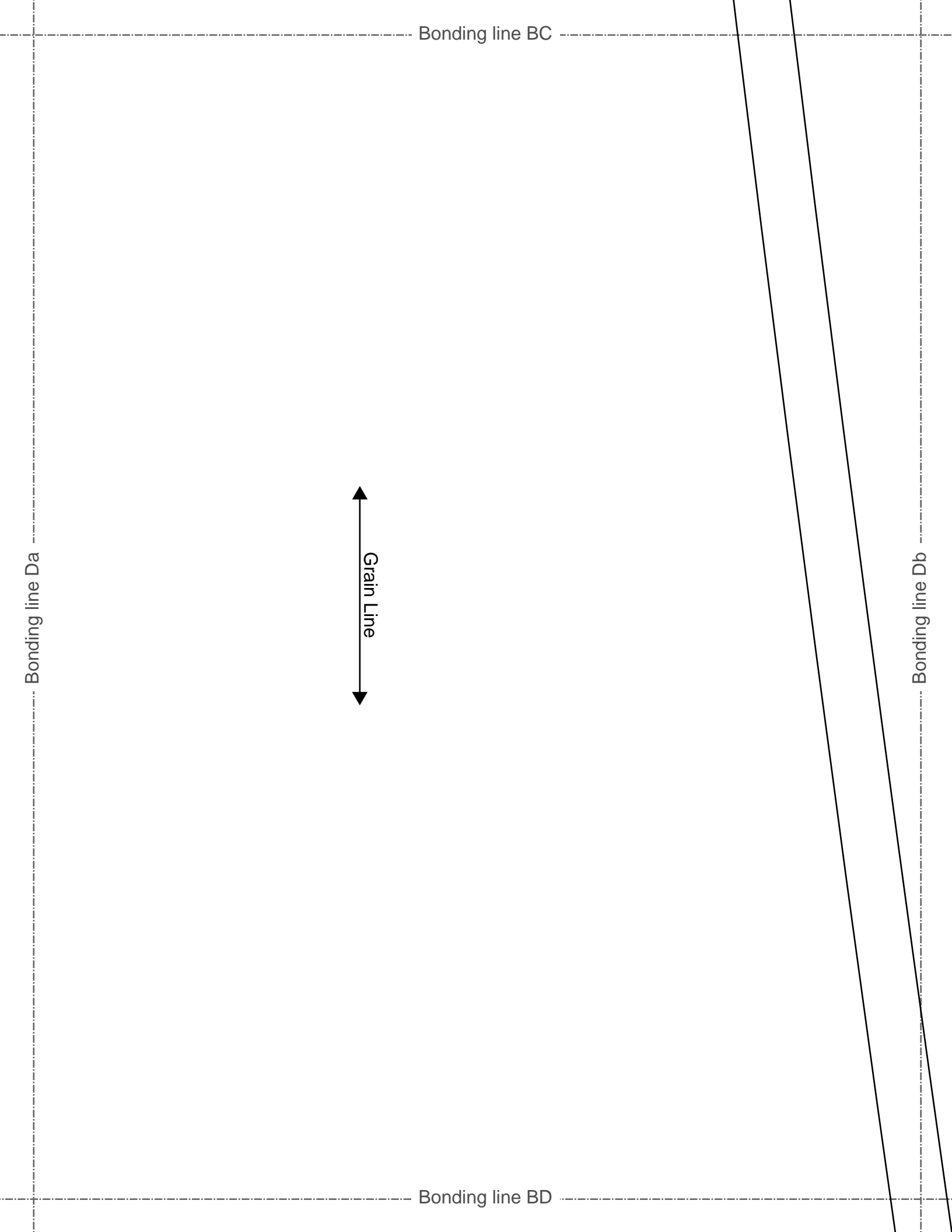
LADIES'  size S

Narrowcoat
Front body
two sheets

Bonding line Ca

Bonding line Cb

Bonding line BC



Bonding line BD

Bonding line Ea

Bonding line Eb

Seam allowance 1/2in.

Bonding line BE



LADIES'

DRCOS

SITE [http://dr-cos.info\(en\)](http://dr-cos.info(en)) [http://dr-cos.com\(jp\)](http://dr-cos.com(jp))
MAIL info@dr-cos.com
Twitter https://twitter.com/drcos_com
facebook <https://www.facebook.com/drcoscom>

Bonding line Ab
allowance 1/2in.

Bonding line Ac

Seam allowance 1/2in.

Bonding line CA

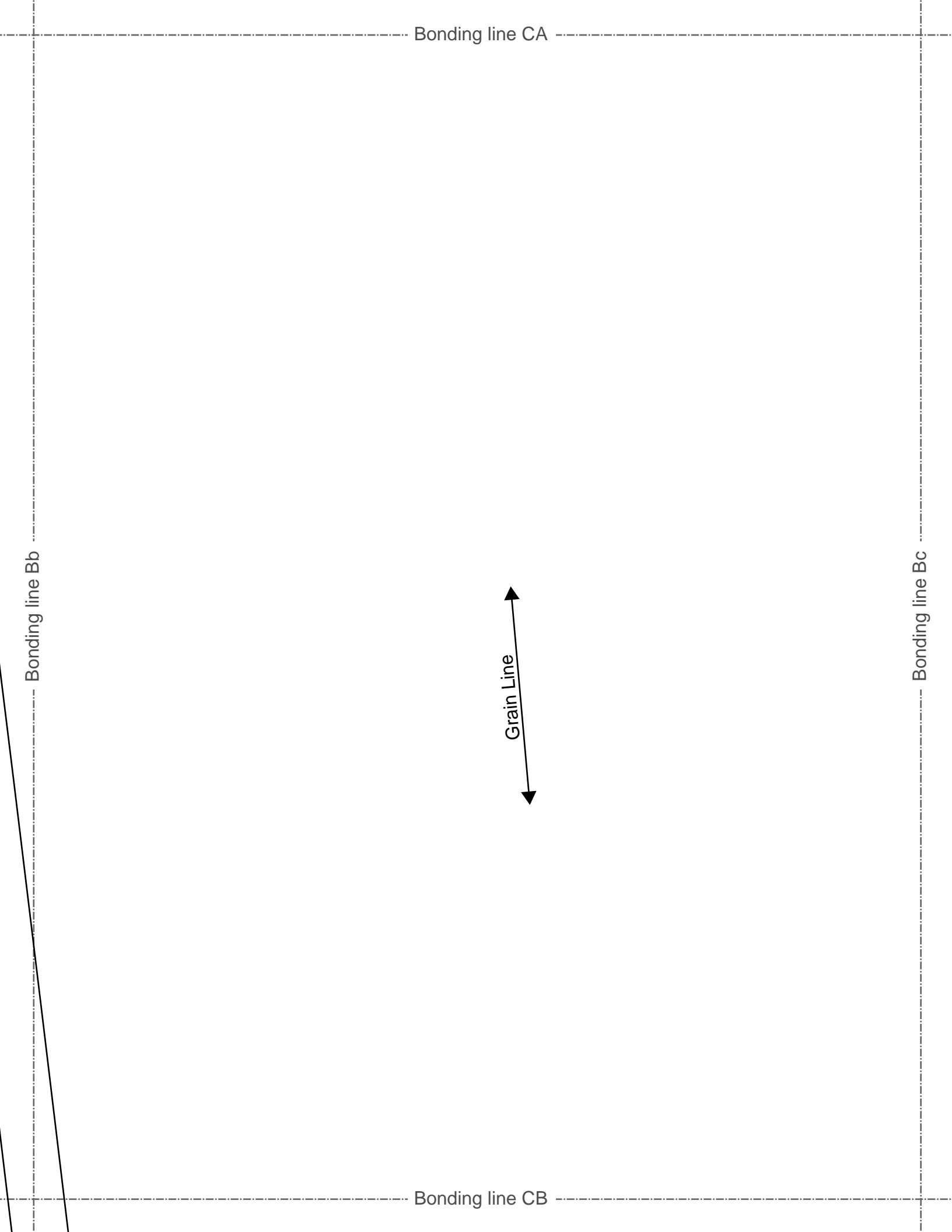
Bonding line CA

Bonding line Bb

Bonding line Bc

Grain Line

Bonding line CB



Bonding line CB

Bonding line Cb

Bonding line Cc

Narrowcoat
Back body
two sheets

Bonding line CC



Bonding line CC



Bonding line Db

Bonding line Dc

Bonding line CD

Bonding line CD

Bonding line Eb

Bonding line Ec

[SITE http://dr-cos.info/en](http://dr-cos.info/en) <http://dr-cos.com/p>
[MAIL info@dr-cos.com](mailto:info@dr-cos.com)
[Twitter https://twitter.com/dr-cos_com](https://twitter.com/dr-cos_com)
[facebook https://www.facebook.com/drcoscom](https://www.facebook.com/drcoscom)

DRCOS

Facing Line

Bonding line CE



DRCOS

SITE <http://dr-cos.info/en> <http://dr-cos.com/jp>
MAIL info@dr-cos.com
Twitter https://twitter.com/drcos_com
facebook <https://www.facebook.com/drcoscom>

Bonding line Ac

Bonding line Ad

Bonding line DA

LAD

LAD

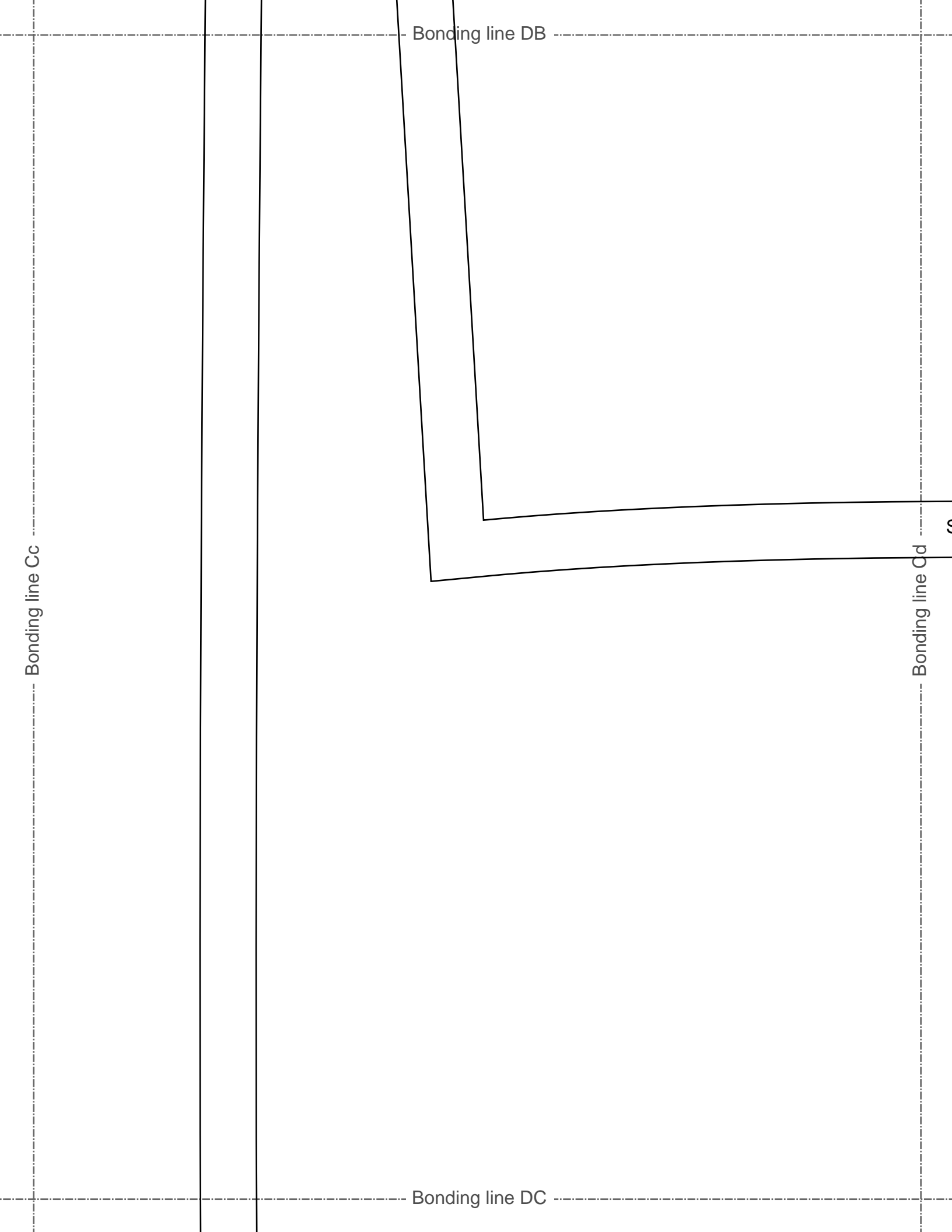
M
t

Bonding line DA

Bonding line Bc

Bonding line Bd

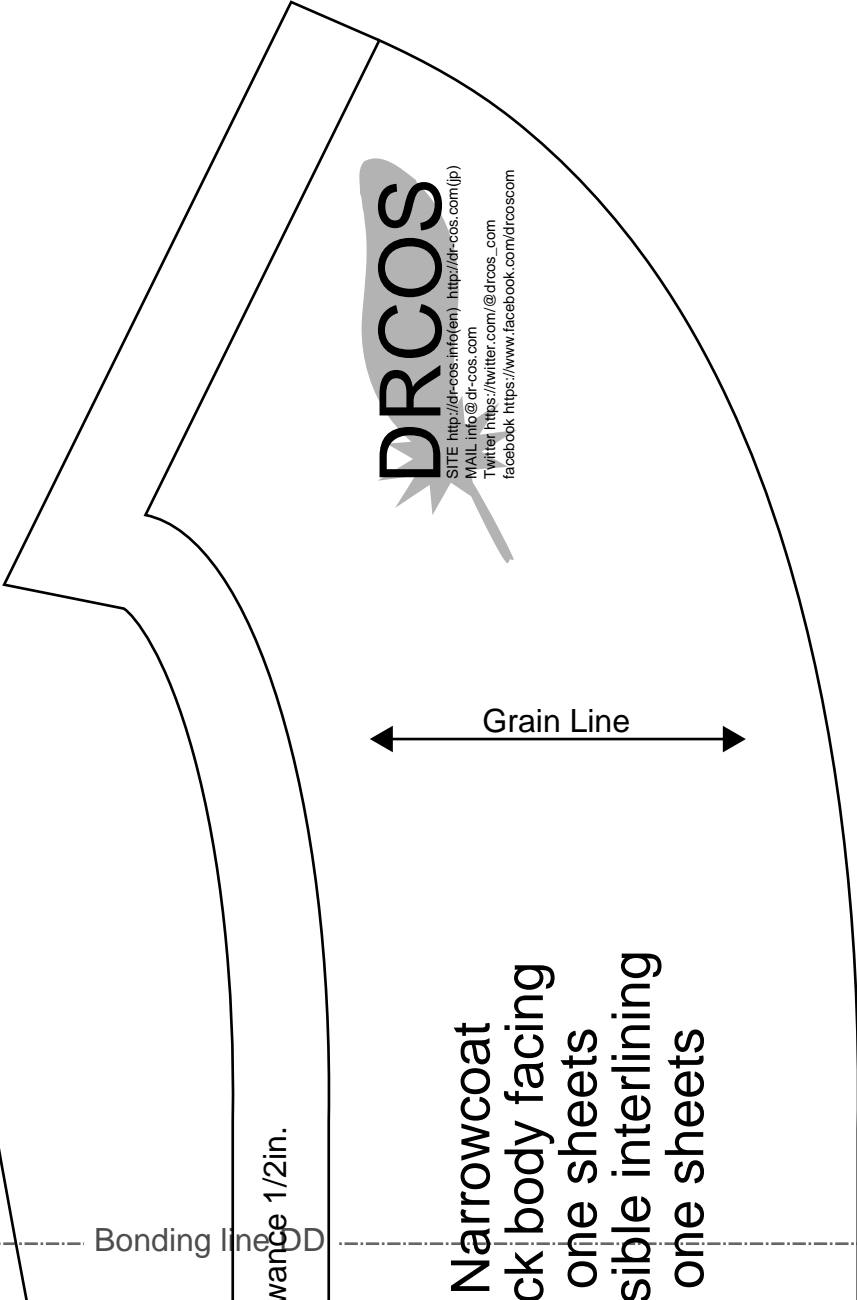
Bonding line DB



Bonding line Dc

Bonding line DC

Bonding line Dd



Distance 1/2in.

Bonding line DD

DRCOS
 SITE <http://dr-cos.info/en> <http://dr-cos.com/jp>
 MAIL info@dr-cos.com
 Twitter [@drcos_com](https://twitter.com/@drcos_com)
 facebook <https://www.facebook.com/drcoscom>

Narrowcoat
Back body facing
one sheets
visible interlining
one sheets

Bonding line Ec

Bonding line CD

Seam allowance 1

LADIES'S
size
LADIES'S

Narrow
Backbone
one
Fusible
one

Bonding line Ed

Bonding line DE

Bonding line Ad

Bonding line Ae



Bonding line EA

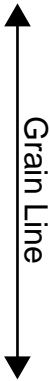


Bonding line EA

Narrowcoat
Sleeve
two sheets

Bonding line Bd

Bonding line Be



Bonding line EB

Bonding line EB

Seam allowance 1/2in.

Bonding line Cd

Bonding line Ce

Bonding line EC

