

[Home](#)
[Back to Modskoat page](#)

DRCOS

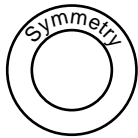
SITE [http://dr-cos.info\(en\)](http://dr-cos.info(en)) [http://dr-cos.com\(jp\)](http://dr-cos.com(jp))
MAIL info@dr-cos.com
Twitter https://twitter.com/@drcos_com
facebook <https://www.facebook.com/drcoscom>

Facing Line



LADIES'S size **S**

Grain Line



Modskoat
Back body top part
one sheets

Bonding line Aa

Seam allowance 1/2in.

DRCOS

SITE [http://dr-cos.info\(en\)](http://dr-cos.info(en)) [http://dr-cos.com\(jp\)](http://dr-cos.com(jp))
MAIL info@dr-cos.com
Twitter https://twitter.com/@drcos_com
facebook <https://www.facebook.com/drcoscom>

Bonding line AA

Bonding line AA

Modskoat
Back body lower part
two sheets

Bonding line Ba

Drawstring position

Seam allowance 1/2in.

Bonding line AB

2in.

Bonding line AB

LADIES'  S
size

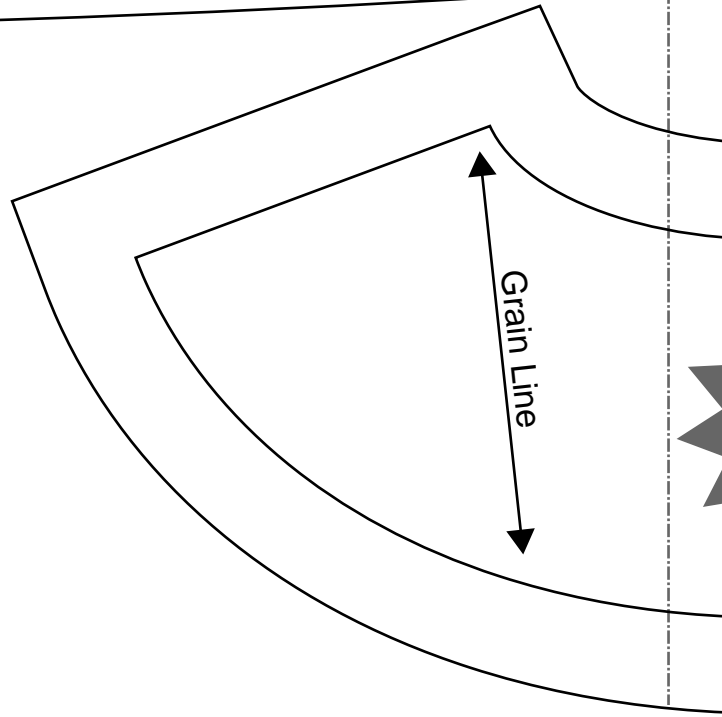


Grain Line

Bonding line Ca

Bonding line AC

Bonding line AC



Grain Line



Grain Line

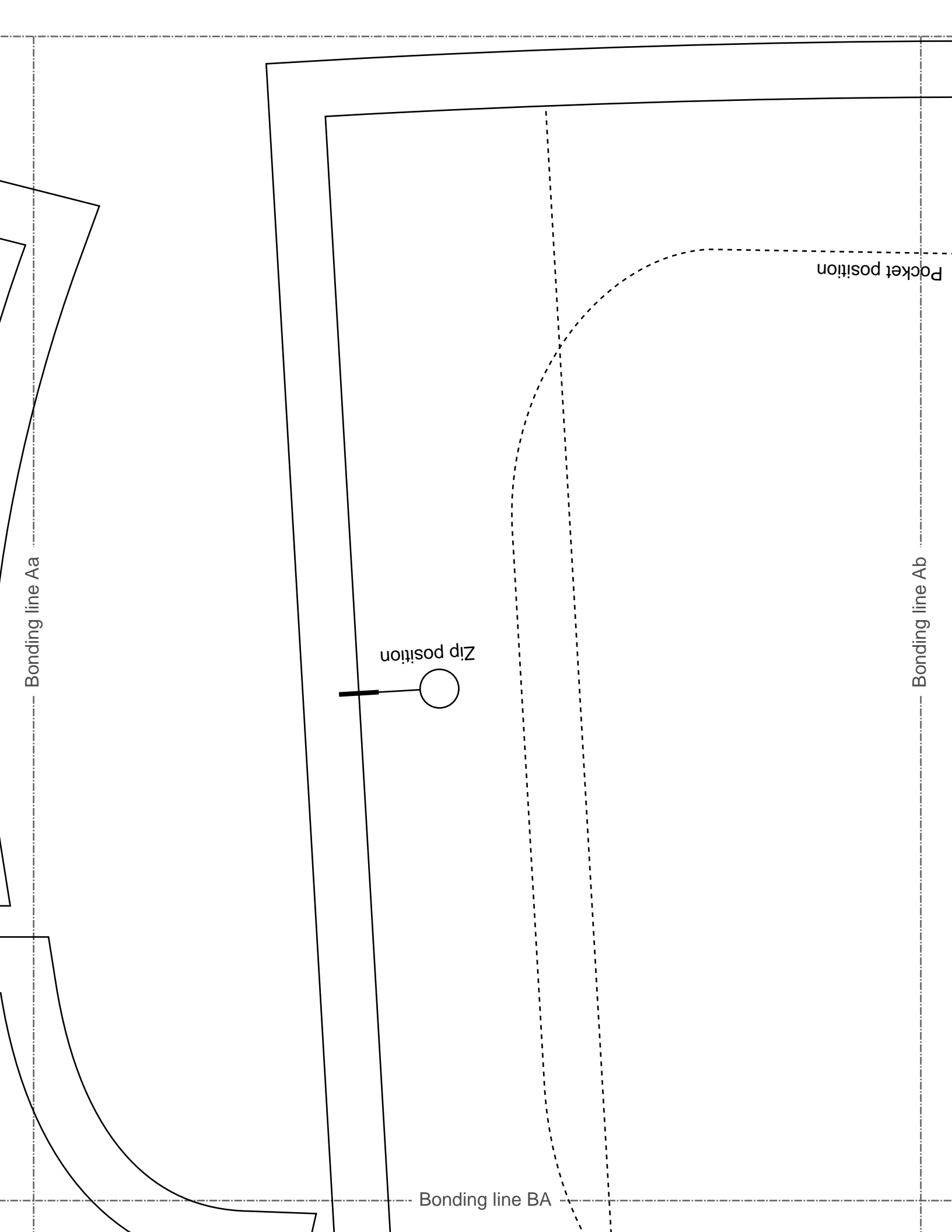
LADIES' size S

Seam allowance

Grain Line

Bonding line AD

Bonding line Da



Bonding line BA

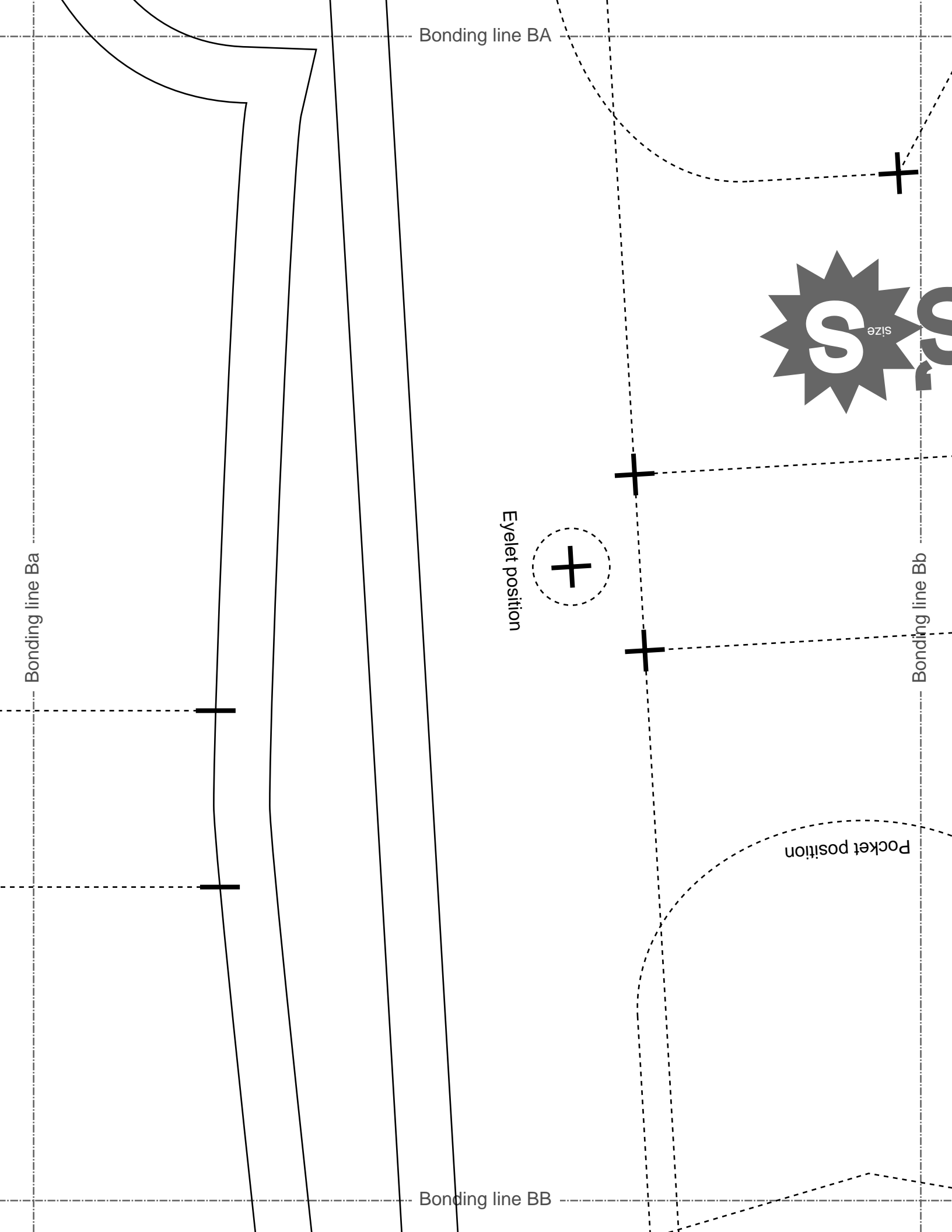
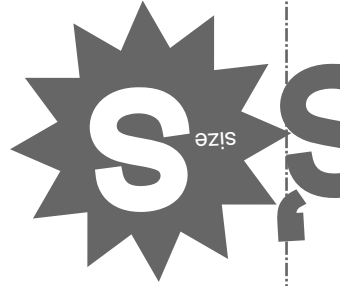
Bonding line Ba

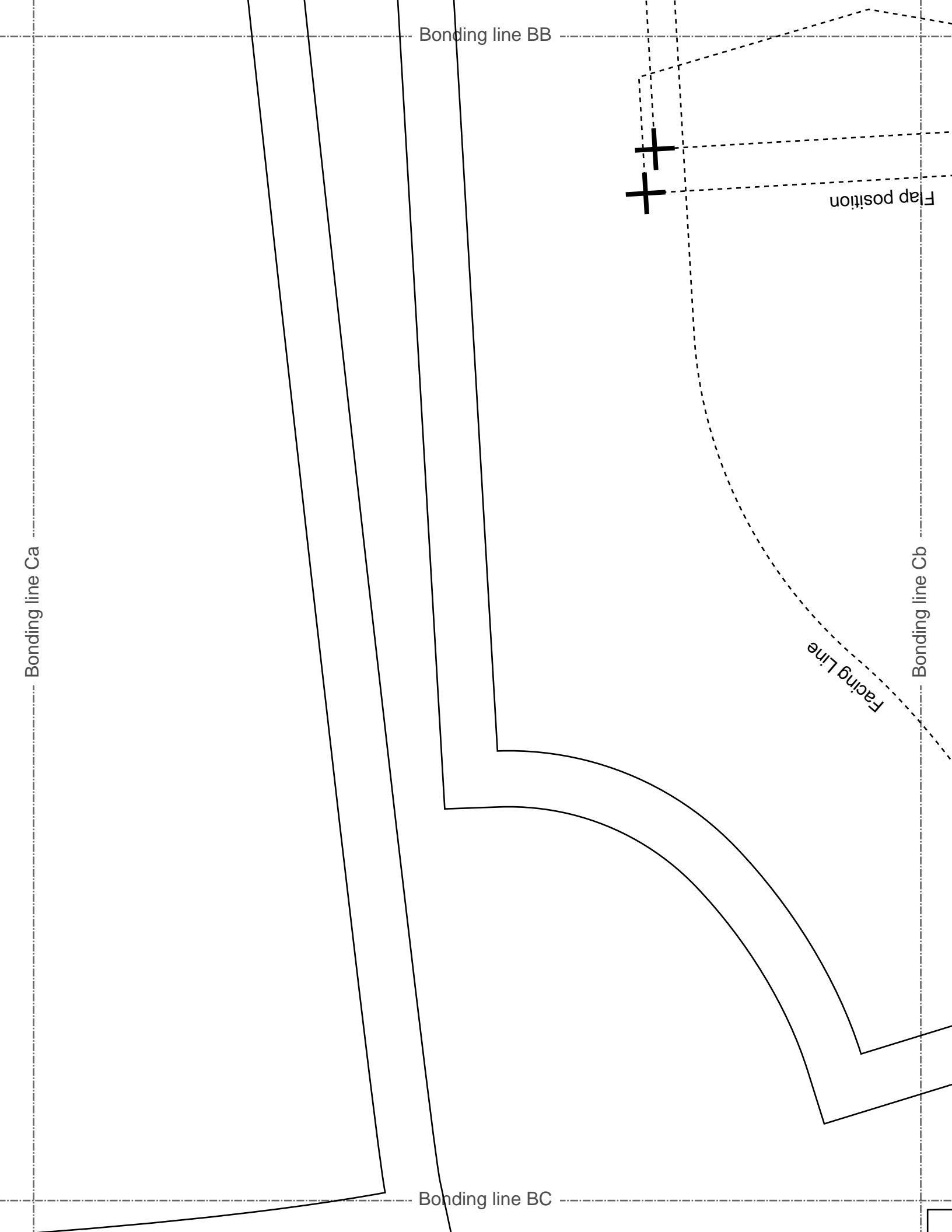
Eyelet position

Bonding line Bb

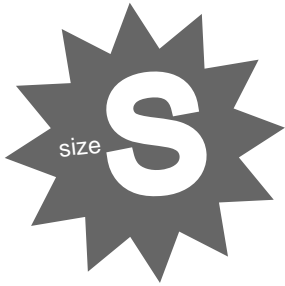
Bonding line BB

Pocket position

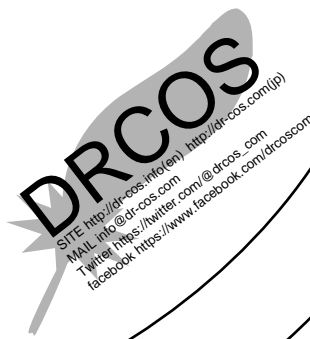




Bonding line BC

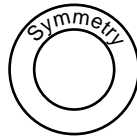


Modscot
Back body facing
one sheets
Fusible interlining
one sheets



Seam allowance 1/2in.

Bonding line Da



Modscot
Drawstring
one sheets



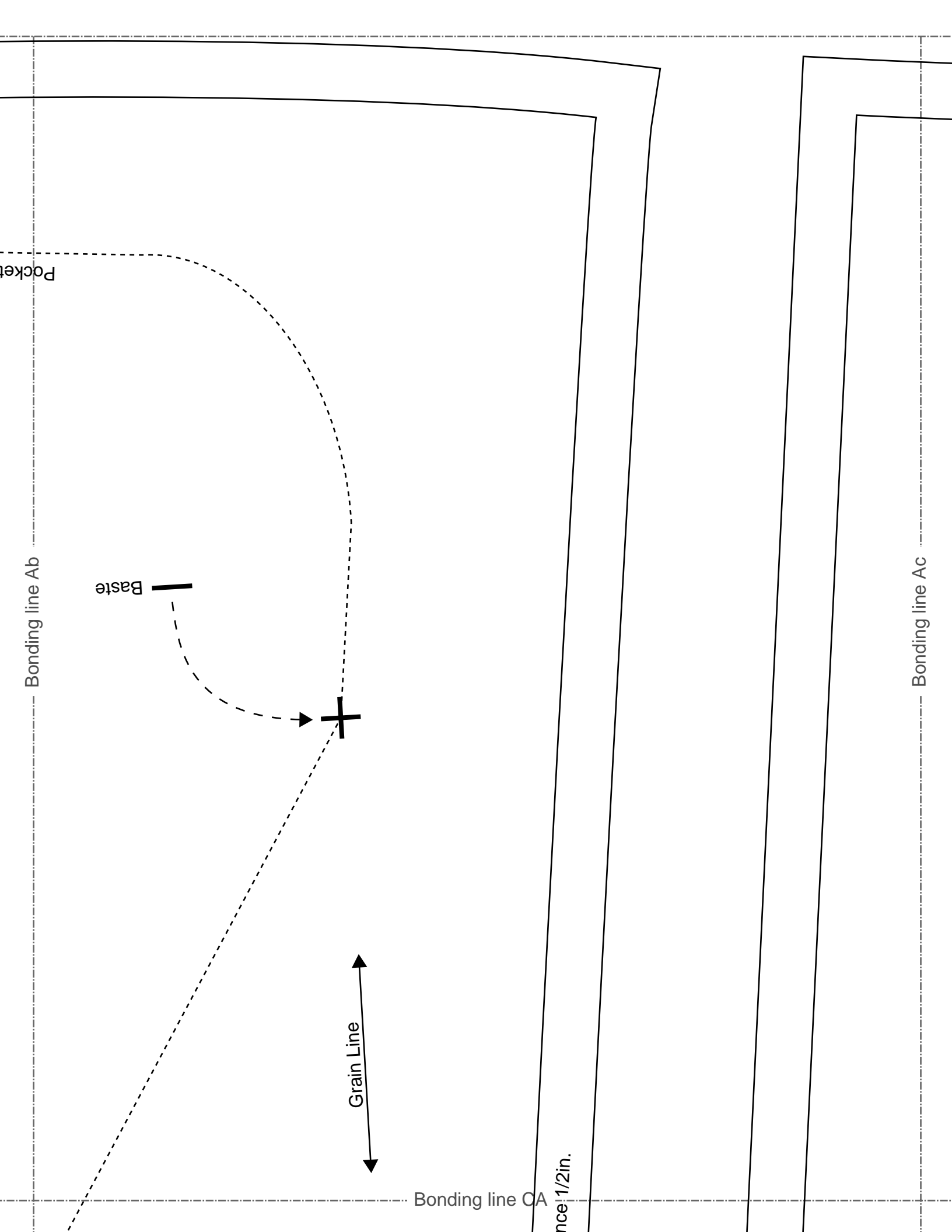
Bonding line Db

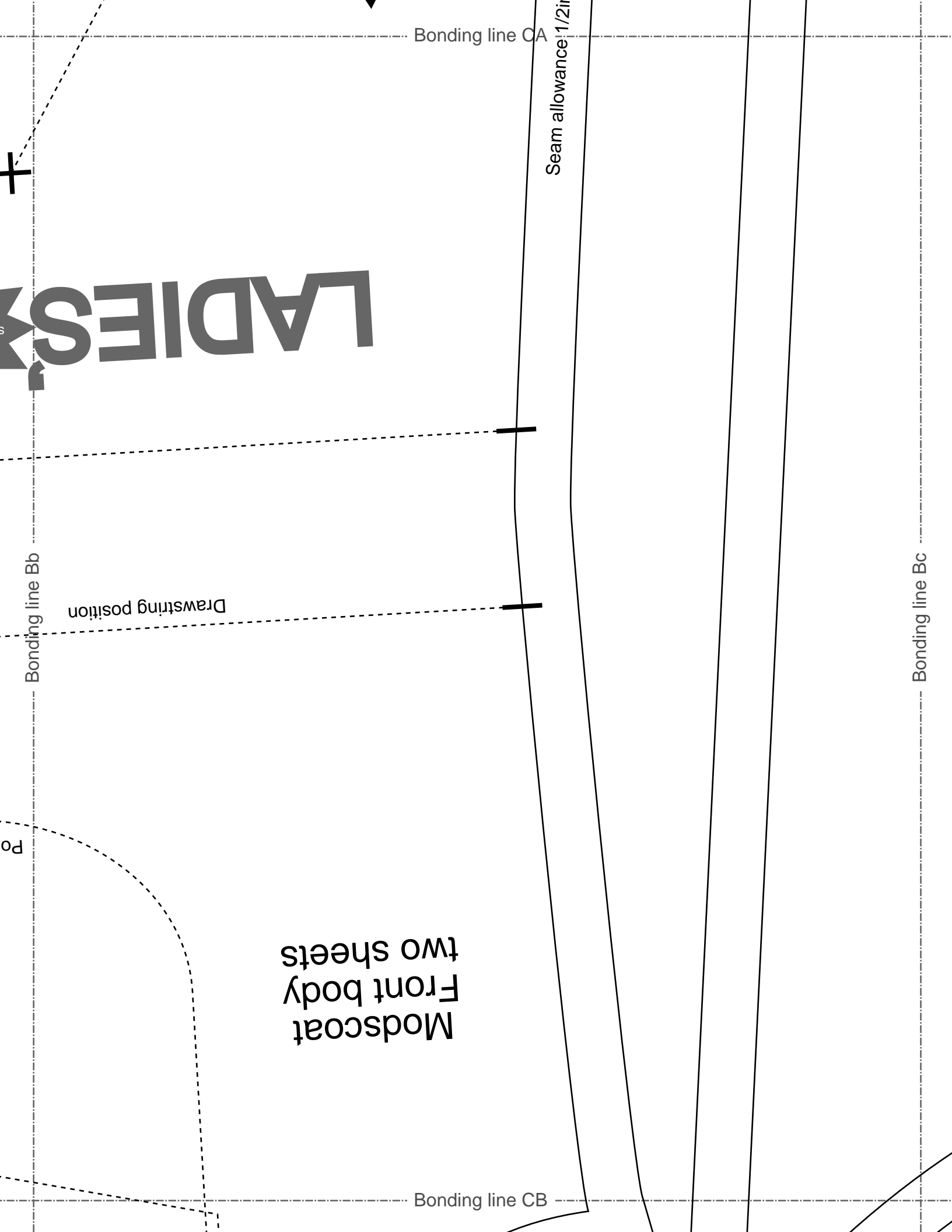
Seam allowance 1/2in.



Seam allowance 1/2in.

Bonding line BD





Bonding line CB

Flap p

Bonding line Cb

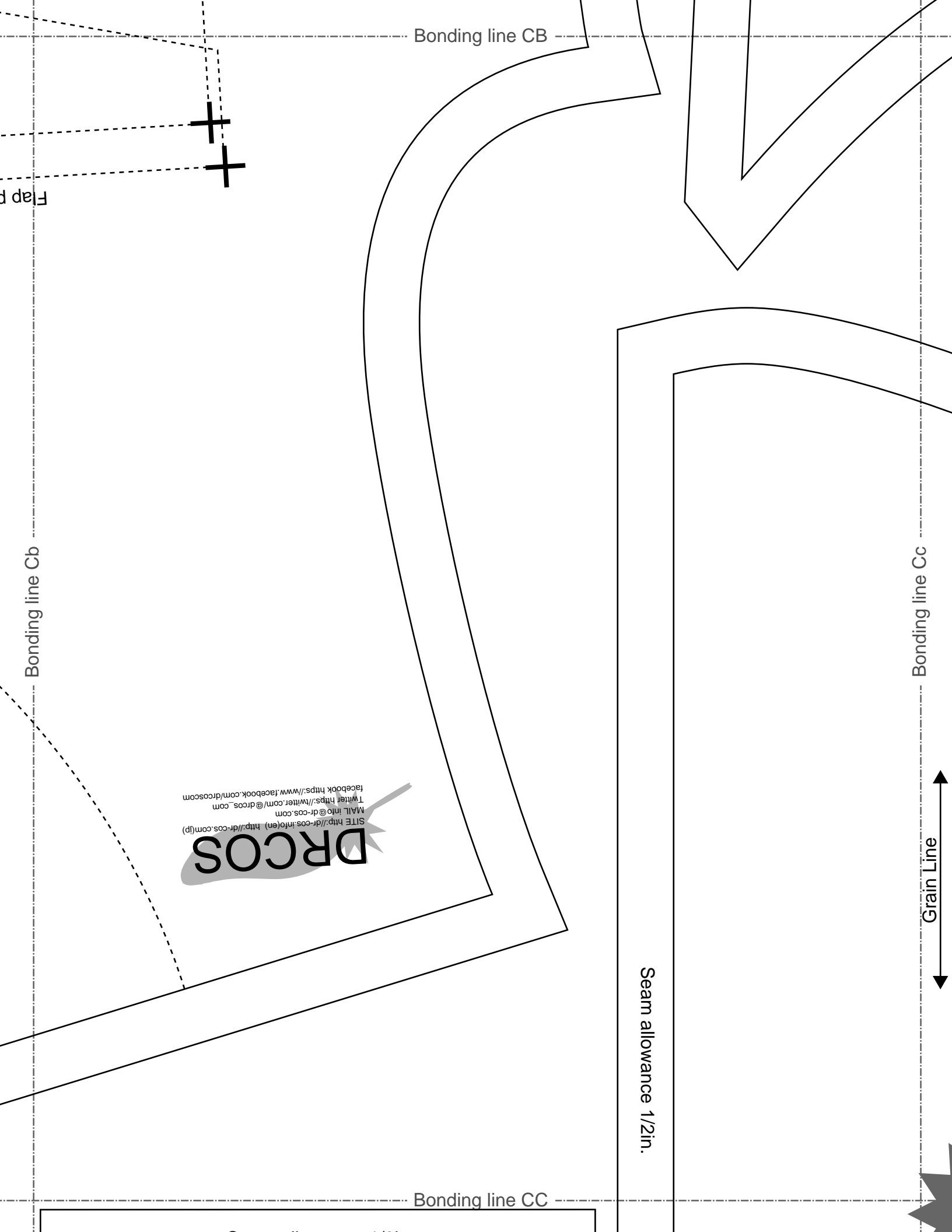
Bonding line Cc

DRCOS
 SITE <http://dr-cos.info/en> <http://dr-cos.com/jp>
 MAIL info@dr-cos.com
 TWITTER <https://twitter.com/dr-cos.com>
 FACEBOOK <https://www.facebook.com/dr-cos.com>

Seam allowance 1/2in.

Bonding line CC

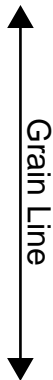
Grain Line



Bonding line CC

Seam allowance 1/2in.

Modscot
pocket
one sheets



DRCOS
SITE <http://dr-cos.info/en> <http://dr-cos.com/fp>
MAIL info@dr-cos.com
Twitter https://twitter.com/drcos_com
facebook <https://www.facebook.com/drcoscom>

Bonding line Dc

Modscot
Front body facing
two sheets
Fusible interlining
two sheets

Bonding line CD

Bonding line Db

com
n(fp)

Seam allowance 1/2in.

Bonding line Ac

Bonding line Ad

Bonding line DA

Grain Line



Bonding line DA



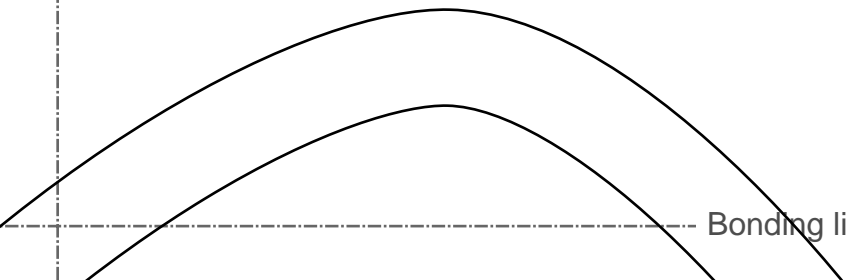
Bonding line Bc

Bonding line Bd

Modscot
Sleeve
two sheets



Bonding line DB



Bonding line DB

Bonding line Cc

Bonding line Cd



Modscot
hood
two sheets

SOS
[http://dr-cos.com\(pdf](http://dr-cos.com(pdf)
info@dr-cos.com
<https://www.facebook.com/dr-cos.com>



Bonding line DC

fac
TW
M/A
SIT

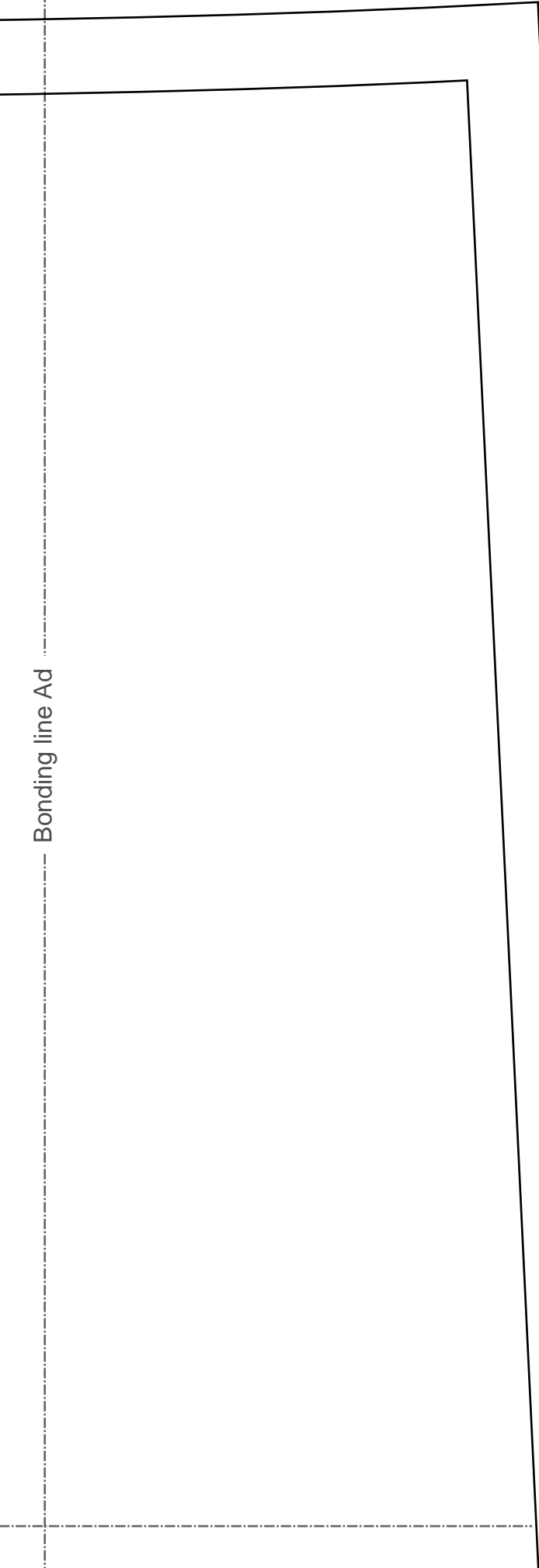
Bonding line Dc

Bonding line Dd

DRCOS
SITE: <http://drcos.com>
MAIL: info@drcos.com
Twitter: <https://twitter.com/drcos>
Facebook: <https://www.facebook.com/drcos.com>

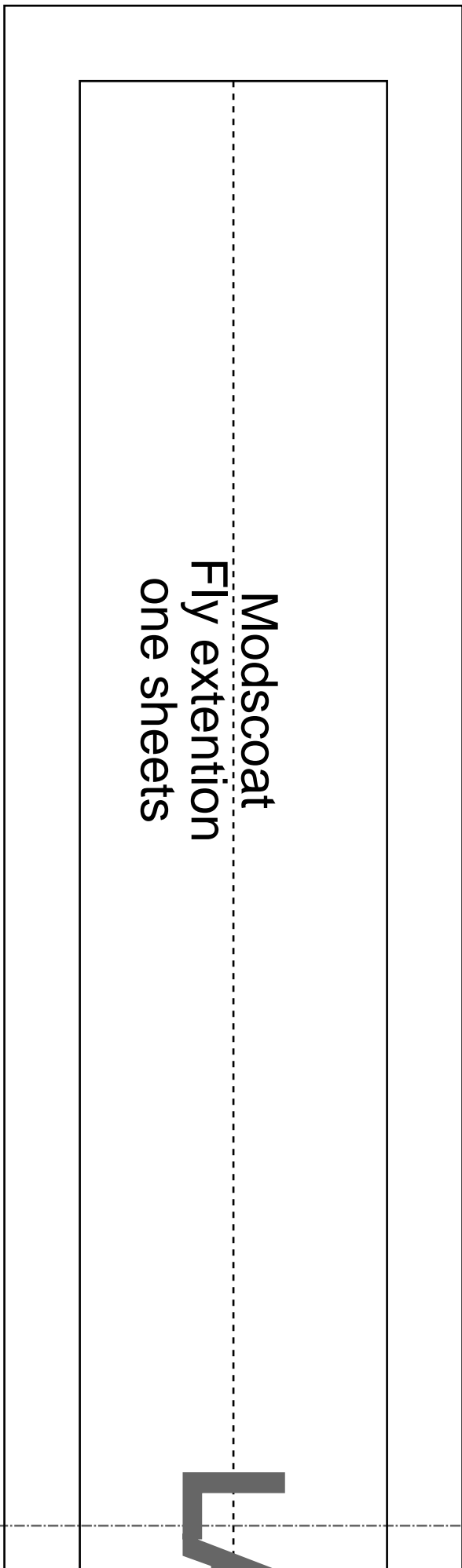
Bonding line DD

Bonding line Ad



Bonding line EA

Modskoat
Fly extention
one sheets



Bonding line Ae



Bonding line Bd

Bonding line EA

Seam allowance 1/2in.

LADIES'S ^{size} S



Grain Line

Crease Line

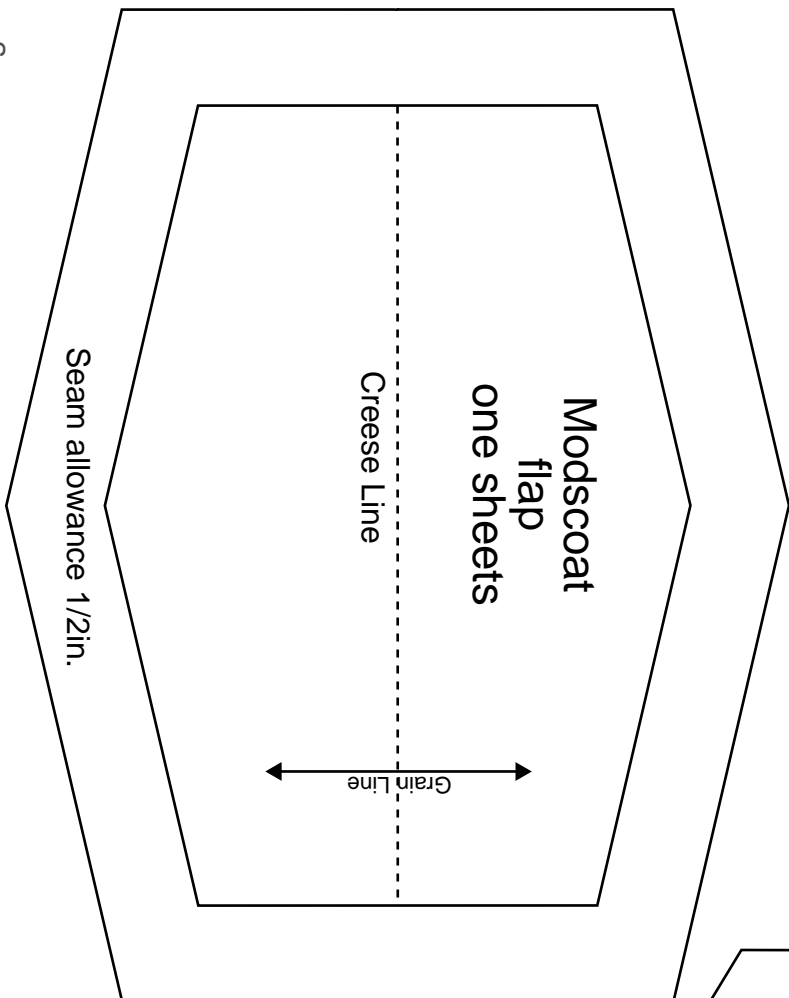
Bonding line EB

Bonding line Be

Bonding line EB

DRCOS
SITE <http://dr-cos.info/en> <http://dr-cos.com>
MAIL info@dr-cos.com
Twitter <https://twitter.com/dr-cos>
facebook <https://www.facebook.com/drcos>

Bonding line Cd

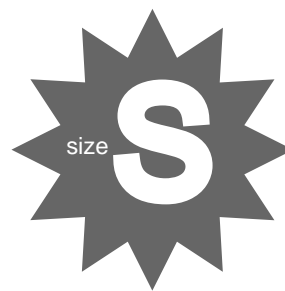


Bonding line EC

DRCOS
SITE <http://dr-cos.info/en> <http://dr-cos.com>
MAIL info@dr-cos.com
Twitter <https://twitter.com/dr-cos>
facebook <https://www.facebook.com/drcos.com>

Bonding line Ce

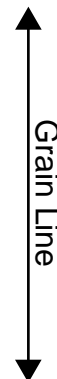
Bonding line EC



Pocket mouth

DRCOS

SITE [http://dr-cos.info\(en\)](http://dr-cos.info(en)) [http://dr-cos.com\(jp\)](http://dr-cos.com(jp))
MAIL info@dr-cos.com
Twitter https://twitter.com/drcos_com
facebook <https://www.facebook.com/drcoscom>



Modskoat
pocket
two sheets

Seam allowance 1/2in.

Bonding line ED

Bonding line Dd

Bonding line De