

[Home](#)

[Back to Modskoat page](#)

DRCOS

SITE [http://dr-cos.info\(en\)](http://dr-cos.info(en)) [http://dr-cos.com\(jp\)](http://dr-cos.com(jp))
MAIL info@dr-cos.com
Twitter https://twitter.com/@drcos_com
facebook <https://www.facebook.com/drcoscom>

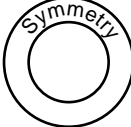
Facing Line

size

8

Grain Line

Symmetry



**Modskoat
Back body top part
one sheets**

Seam allowance 1/2in.

DRCOS

SITE [http://dr-cos.info\(en\)](http://dr-cos.info(en)) [http://dr-cos.com\(jp\)](http://dr-cos.com(jp))
MAIL info@dr-cos.com
Twitter https://twitter.com/@drcos_com
facebook <https://www.facebook.com/drcoscom>

Bonding line Aa

Bonding line AA

Modskoat

Bonding line AA

Modskoat Back body lower part two sheets

Drawstring position

Seam allowance 1/2in.

Bonding line Ba

Children's  size 8

Bonding line AB

Bonding line AB

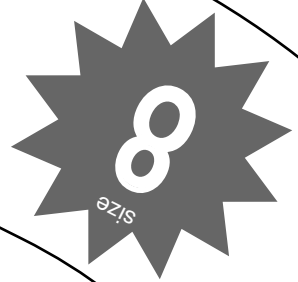
Grain Line

Bonding line Ca

[SITE http://dr-cos.info/en](http://dr-cos.info/en) <http://dr-cos.com/pt>
[MAIL info@dr-cos.com](mailto:info@dr-cos.com) [Twitter https://twitter.com/dr-cos.com](https://twitter.com/dr-cos.com)
[facebook https://www.facebook.com/dr-cos.com](https://www.facebook.com/dr-cos.com)

DRCOS

Modscocat
 Back body facing
 one sheets
 Fusible interlining
 one sheets
 Seam allowance 1/2in.



Grain Line

Bonding line AC

Bonding line AC



Modscot
hood
two sheets

Seam allowance 1/2in.

Bonding line Da

Children's
SIZE 8

DRCOS
SITE <http://dr-cos.info/en> <http://dr-cos.com/jp>
MAIL info@dr-cos.com
TWITTER https://twitter.com/dr-cos_com
FACEBOOK <https://www.facebook.com/dr-cos.com>

Bonding line AD

Bonding line Aa

Zip position

Pocket position

Baste

Bonding line Ab

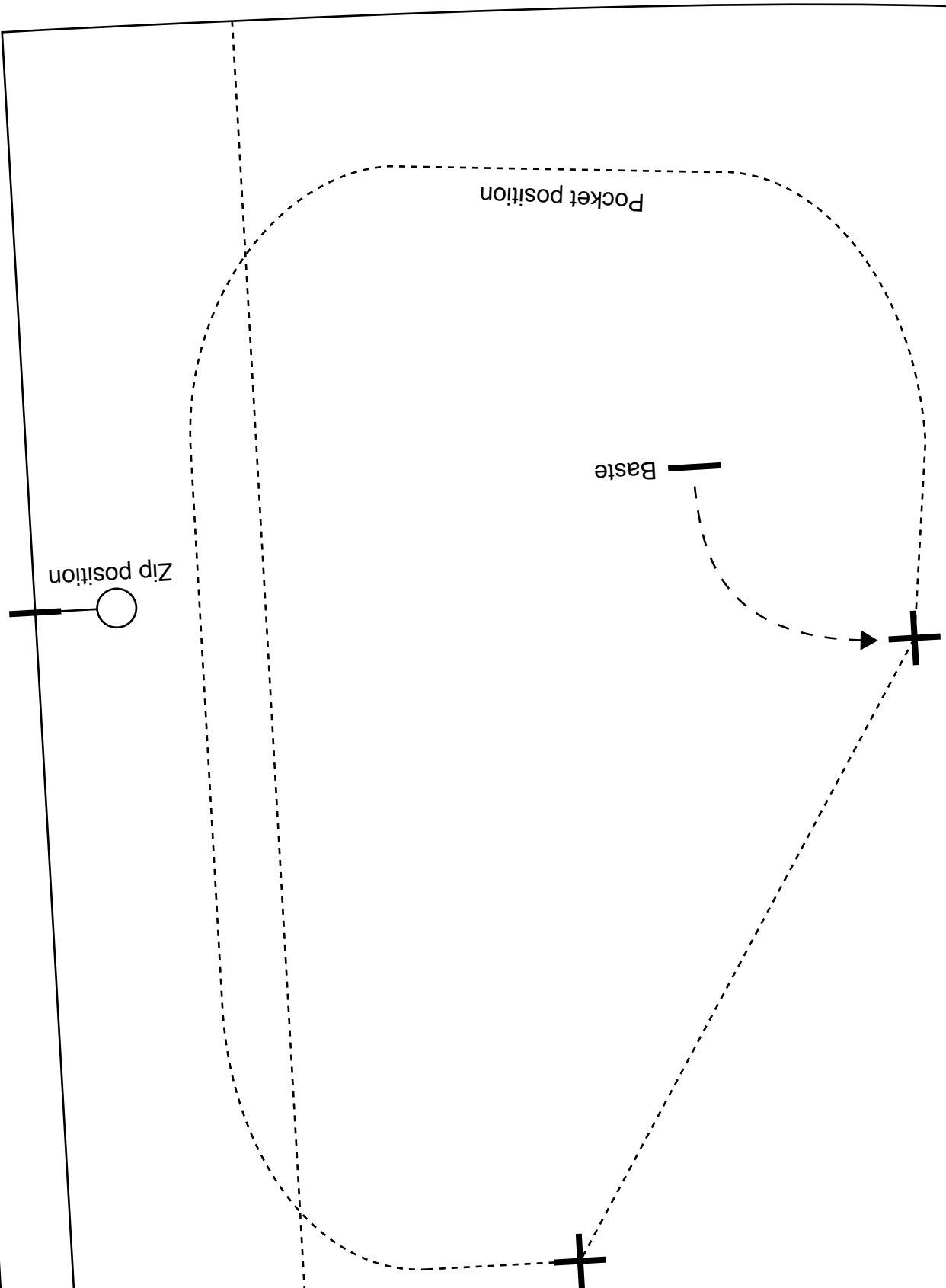
Crain | ine

Bond

8

size

Children's



Bond

size

8

Modscout
front body
two sheets

Eyelet position



Drawstring position

Pocket position

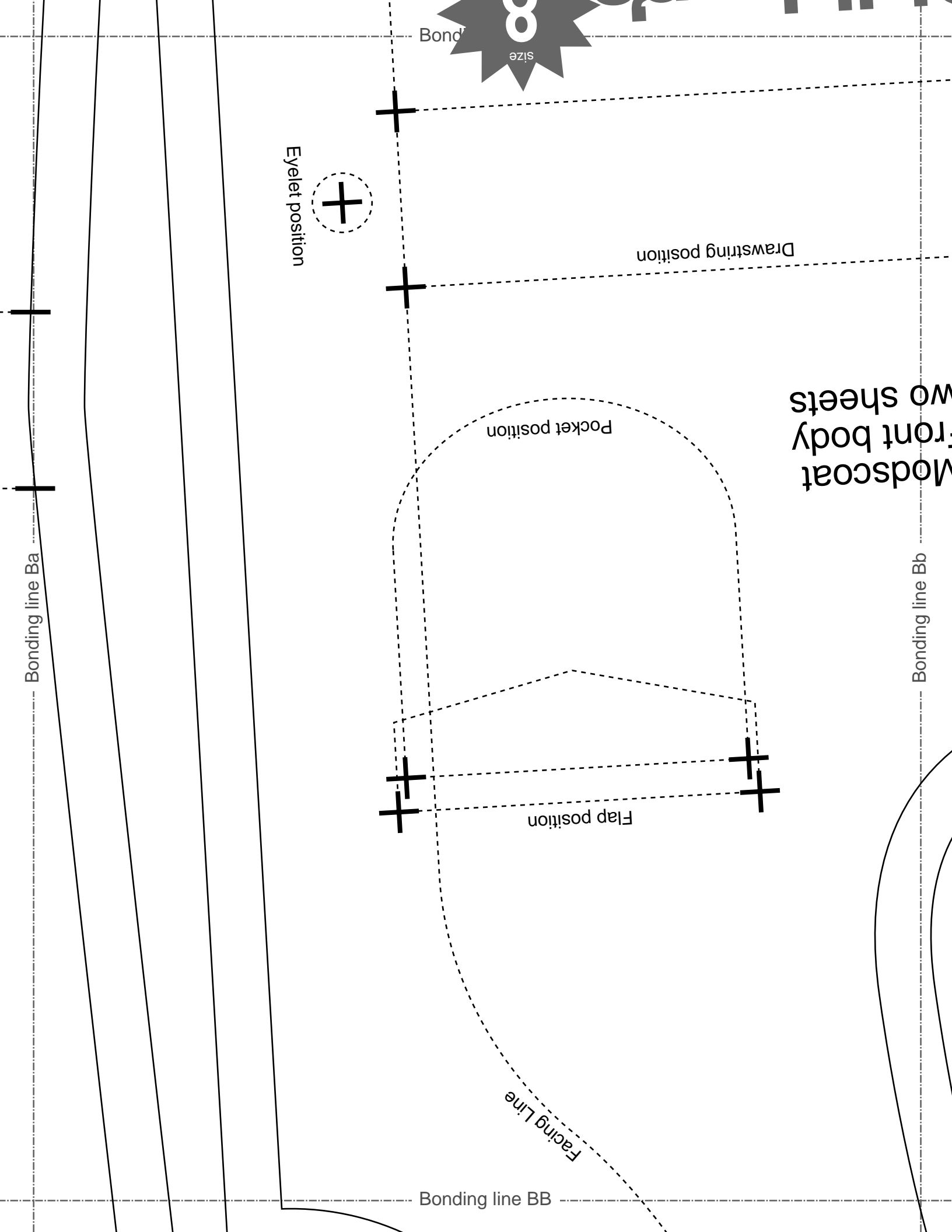
Flap position

Facing Line

Bonding line Ba

Bonding line Bb

Bonding line BB



Bonding line BB

DRCOS
SITE [http://dr-cos.info\(en\)](http://dr-cos.info(en)) [http://dr-cos.com\(jp\)](http://dr-cos.com(jp))
MAIL info@dr-cos.com
Twitter https://twitter.com/drcos_com
facebook <https://www.facebook.com/drcoscom>

Bonding line Ca

DRCOS

SITE [http://dr-cos.info\(en\)](http://dr-cos.info(en)) [http://dr-cos.com\(jp\)](http://dr-cos.com(jp))
MAIL info@dr-cos.com
Twitter https://twitter.com/drcos_com
facebook <https://www.facebook.com/drcoscom>

Seam a

Bonding line Cb

Bonding line BC

Bonding line BC

Children's

Modskoat
Sleeve
two sheets

Bonding line Da

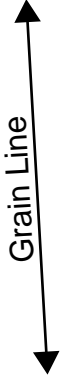
Bonding line Db

Grain Line

Seam allowance 1.

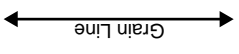
Bonding line BD

Bonding line Ab

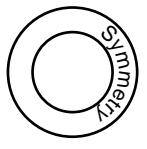


Seam allowance 1/2in.

CS



Children's  size 8



Mod Draw one s

Seam allowance 1/2in.

Bonding line CA

Seam allowance 1/2in

Children's  size 8

Modscout
Fly extention
one sheets

Bonding line Ac

Bonding line Bc

Creese Line

Grain Line



ce 1/2in.

Bonding line CA

Modskoat
Drawstring
one sheets



Bonding line CB

Modskoat
flap
one sheets

Creese Line

Grain Line

Seam allowance 1/2in.

Bonding line Bb

Mod
Front
two s

Bonding line CB

Seam allowance 1/2in.

Bonding line Cb



Modskoat
pocket
one sheets

Grain Line



Modskoat
Front body facing
two sheets
Fusible interlining
two sheets

Bonding line Cc

Bonding line CC

Children's  size 8

coat
ve
eets

Bonding line Db

Bonding line CC

Seam allowance 1/2in.

Bonding line CD

Children's  size 8

Grain Line

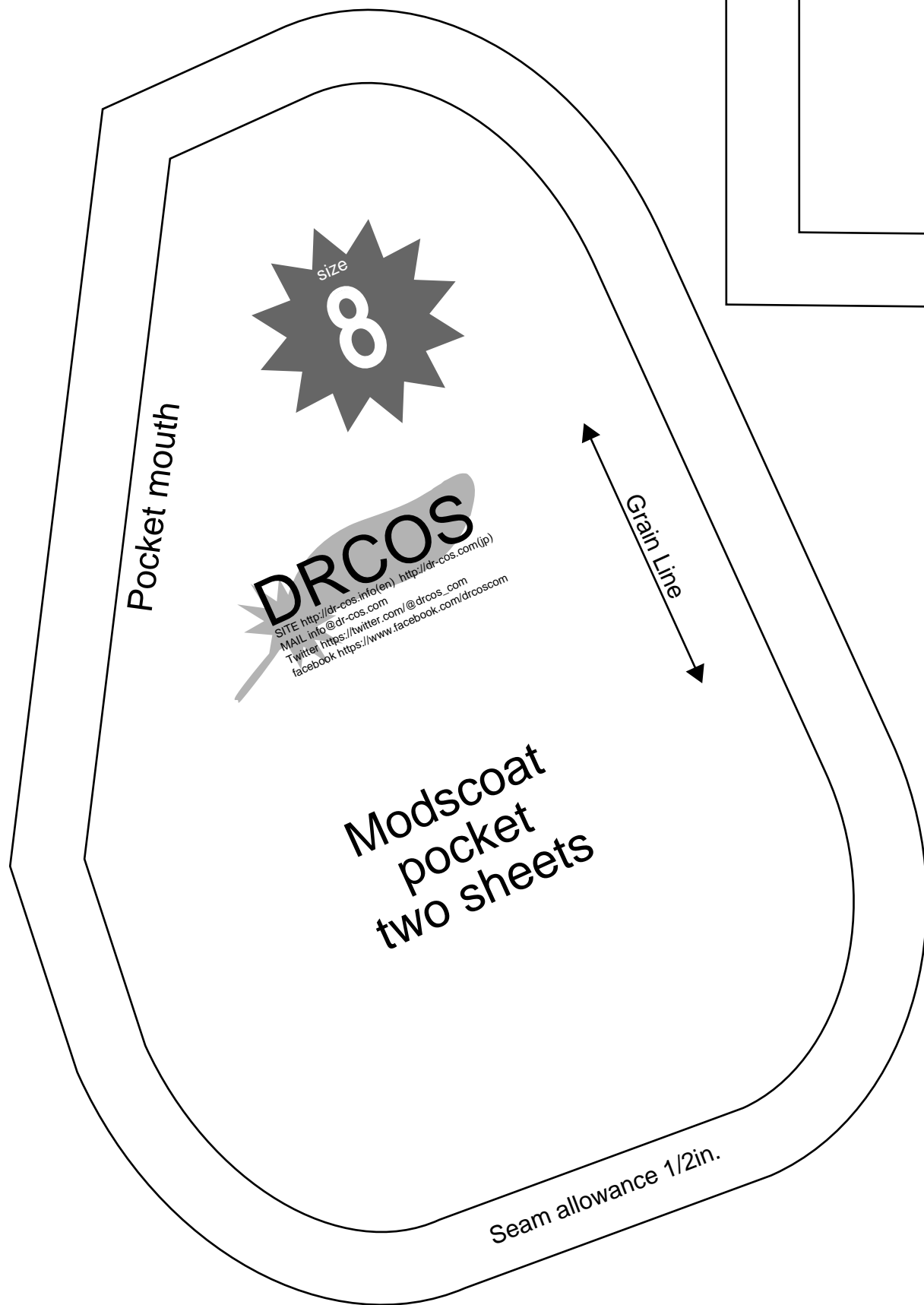
Seam allowance 1/2in.

Bonding line Dc

Bonding line CD

Bonding line Eb

Bonding line Ec



Bonding line CE