

LADIES' <sup>size</sup> L

**DRCOS**

SITE: <http://drcos.info/easy> <http://drcos.com/lip>  
MAIL: [info@drcos.com](mailto:info@drcos.com)  
Twitter: <https://twitter.com/drcos>  
facebook: <https://www.facebook.com/drcos.com>

Bonding line AA

Facing Line

Bonding line Aa

Seam allowance 1/2in.

**Hoodie3**  
Facing two sheets  
interlining two sheets

Bonding line AB

Bonding line AA

**LAD**

Facing Line

Bonding line Ba

F  
Fusible

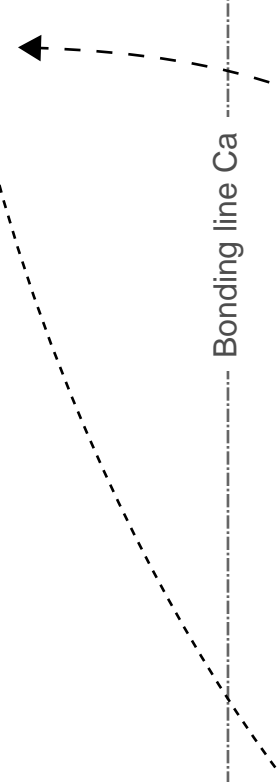
Bonding line AB

F  
Front  
tw



Bonding line Ca

Bonding line AC

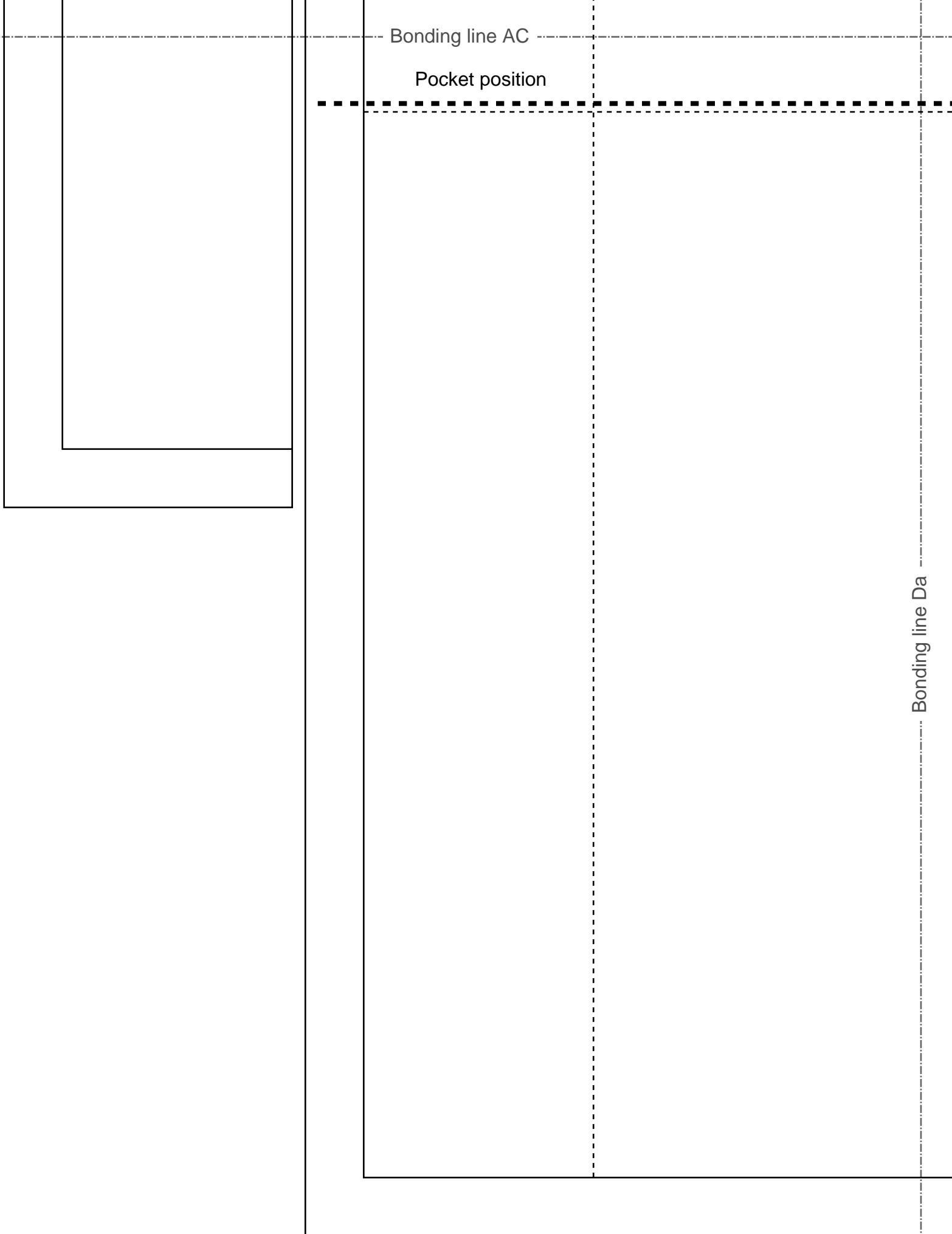


Bonding line AC

Pocket position

Bonding line Da

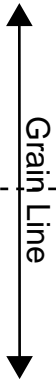
Bonding line AD



# LADIE

Hoodie  
Hem r  
two she

Seam allowan



Bonding line Aa

Bonding line Ab

**DRCOS**

SITE [http://dr-cos.info\(en\)](http://dr-cos.info(en)) [http://dr-cos.com\(jp\)](http://dr-cos.com(jp))  
MAIL [info@dr-cos.com](mailto:info@dr-cos.com)  
Twitter [https://twitter.com/@drcos\\_com](https://twitter.com/@drcos_com)  
facebook <https://www.facebook.com/drcoscom>

Bonding line BA

Bonding line BA

Bonding line Ba

Bonding line Bb



Hoodie3  
Front Body

Bonding line BB

# Hoodie3 Front Body two sheets

Bonding line BB

Seam allowance 1/2in.

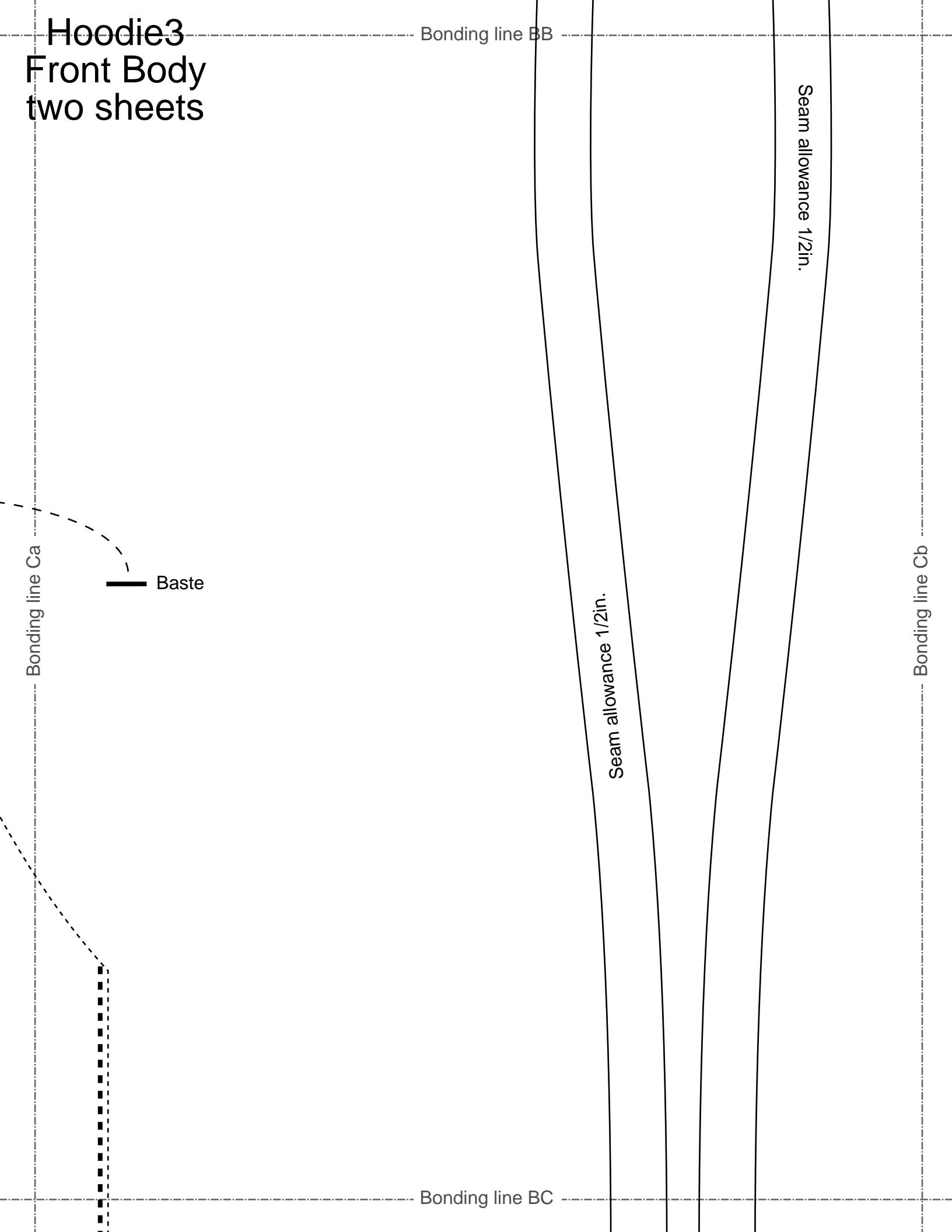
Seam allowance 1/2in.

Bonding line Cb

Bonding line Ca

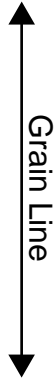
Baste

Bonding line BC



Bonding line BC

Bonding line Da



Bonding line Db

Bonding line BD



SITE <http://dr-cos.info>  
MAIL [info@dr-cos.com](mailto:info@dr-cos.com)  
Twitter <https://twitter.com/dr-cos>  
facebook <https://www.facebook.com/dr-cos>





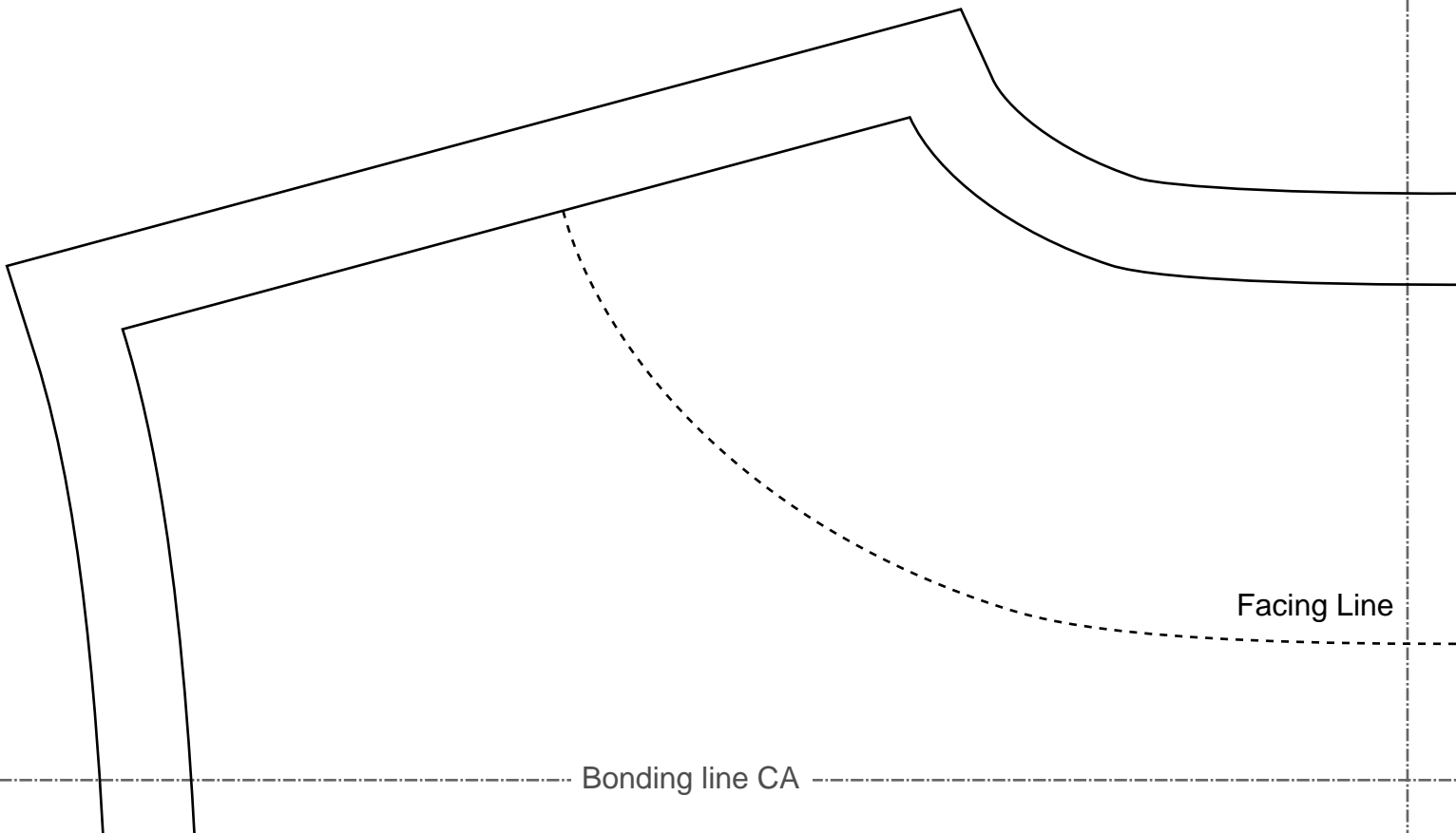
oodie3  
em rib  
sheets

Bonding line Ab

allowance 1/2in.



Bonding line



Facing Line

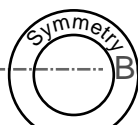
Bonding line CA

Bonding line CA

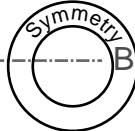
Bonding line Bb

Bonding line Bc

LADIES'  size



Hoodie3  
Back Body

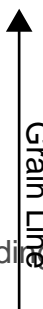


# Hoodies Back Body one sheets

Bonding line Cb

Bonding line CC

Bonding line Cc



Grain Line

Bonding line CC



Bonding line Db

Bonding line Dc

**DRCOS**  
<http://dr-cos.info/en> <http://dr-cos.com/jp>  
[info@dr-cos.com](mailto:info@dr-cos.com)  
er [https://twitter.com/@drcos\\_com](https://twitter.com/@drcos_com)  
book <https://www.facebook.com/drcoscom>

Bonding line CD

**DRCOS**

SITE <http://dr-cos.info/en> <http://dr-cos.com/jp>  
MAIL [info@dr-cos.com](mailto:info@dr-cos.com)  
Twitter [https://twitter.com/drcos\\_com](https://twitter.com/drcos_com)  
facebook <https://www.facebook.com/drcoscom>

Seam allowance 1/2in.

Bonding line Ad  
**two sheets**  
1100

Grain Line

Bonding line DA



Bonding line DB

Front



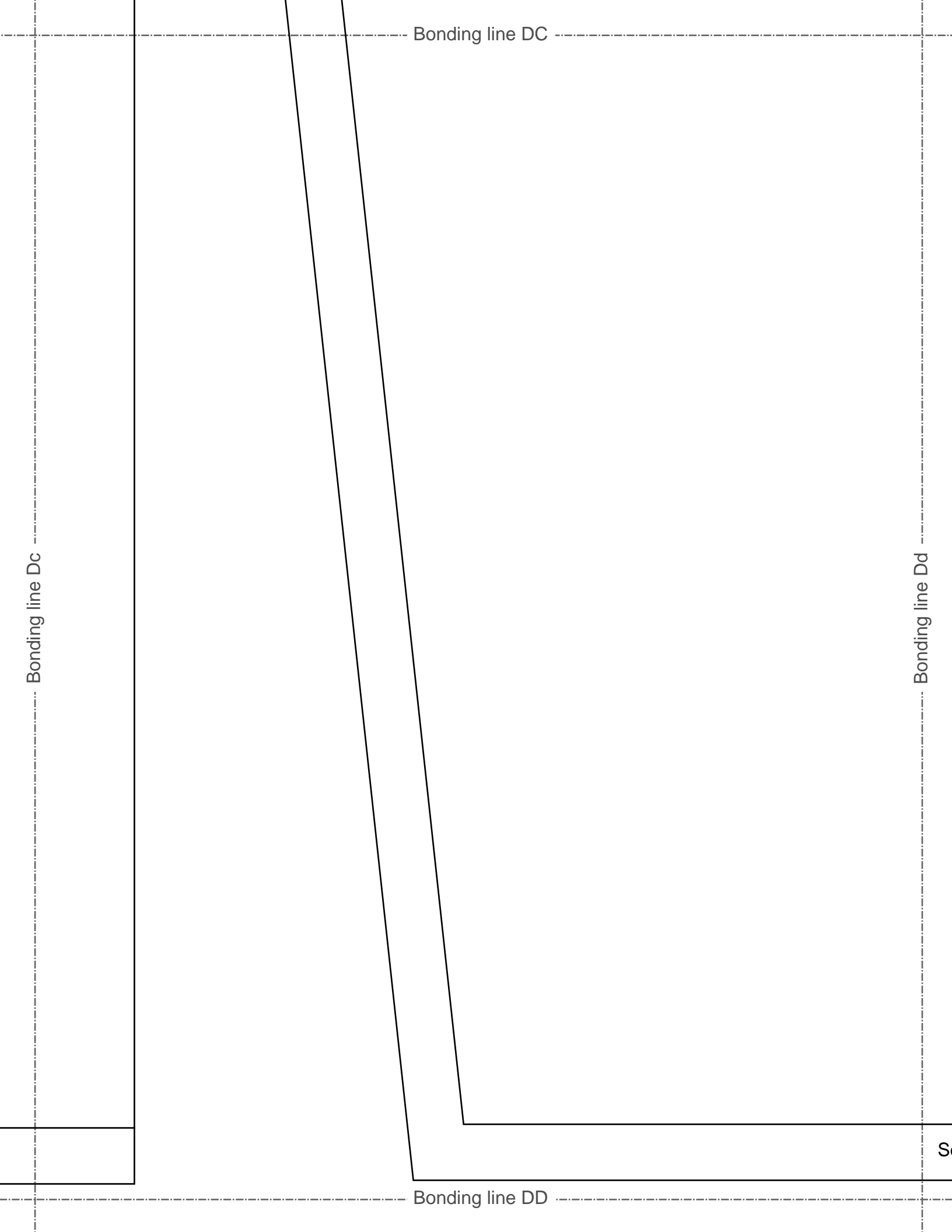
Bonding line Cc

Bonding line Cd

LAD

H  
S  
two

Bonding line DC





Bonding line Ad  
two sheets

Hoodies  
Hood

LADIES'S  
size

Bonding line EA

  
SITE <http://drccos.info/en/> <http://drccos.com/>  
MAIL [info@drccos.com](mailto:info@drccos.com)  
Twitter <https://twitter.com/drccos>  
facebook <https://www.facebook.com/drccos>

Bonding line Ae

Bonding line EA

DRCOS  
os.info(en) http://dr-cos.com(jp)  
u.com |  
writer.com | @drcos\_com  
/www.facebook.com/drcoscom

Hook  
Facing o  
Fusible interlin



Grain Line

Seam allowance 1/2"

Bonding line Bd

Bonding line Be

**DRCOS**  
SITE [http://dr-cos.info\(en\)](http://dr-cos.info(en)) [http://dr-cos.com\(jp\)](http://dr-cos.com(jp))  
MAIL [info@dr-cos.com](mailto:info@dr-cos.com)  
Twitter [https://twitter.com/drcos\\_com](https://twitter.com/drcos_com)  
facebook <https://www.facebook.com/drcoscom>

Bonding line EB

Bonding line EB

Back



Bonding line Cd

Bonding line Ce

Hoodie3  
Sleeve  
two sheets

Bonding line EC

Bonding line EC

Bonding line Dd



Grain Line

Bonding line De

Seam allowance 1/2in.

Bonding line ED

Bonding line FA

Bonding line Be

Bonding line Bf



Bonding line FB

**DRCOS**  
 SITE: <http://dr-cos.info/en>, [http://dr-cos.com\[ip\]](http://dr-cos.com[ip])  
 MAIL: [info@dr-cos.com](mailto:info@dr-cos.com)  
 Twitter: [https://twitter.com/@drcos\\_com](https://twitter.com/@drcos_com)  
 facebook: <https://www.facebook.com/drcos.com>

Seam allowance 1/2in.

Hoodies3  
Cuffs rib  
two sheets

LADIES'S  size

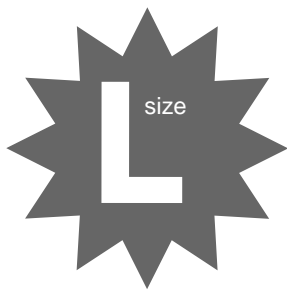
Grain Line

Bonding line FB

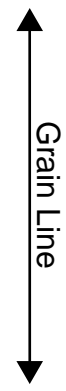
k

Bonding line Ce

Bonding line Cf



# Hoodie3 Pocket two sheets



SITE [http://dr-cos.info\(en\)](http://dr-cos.info(en)) [http://dr-cos.com\(jp\)](http://dr-cos.com(jp))  
MAIL [info@dr-cos.com](mailto:info@dr-cos.com)  
Twitter [@drcos\\_com](https://twitter.com/@drcos_com)  
facebook <https://www.facebook.com/drcoscom>

Seam allowance 1/2in.

Bonding line FC