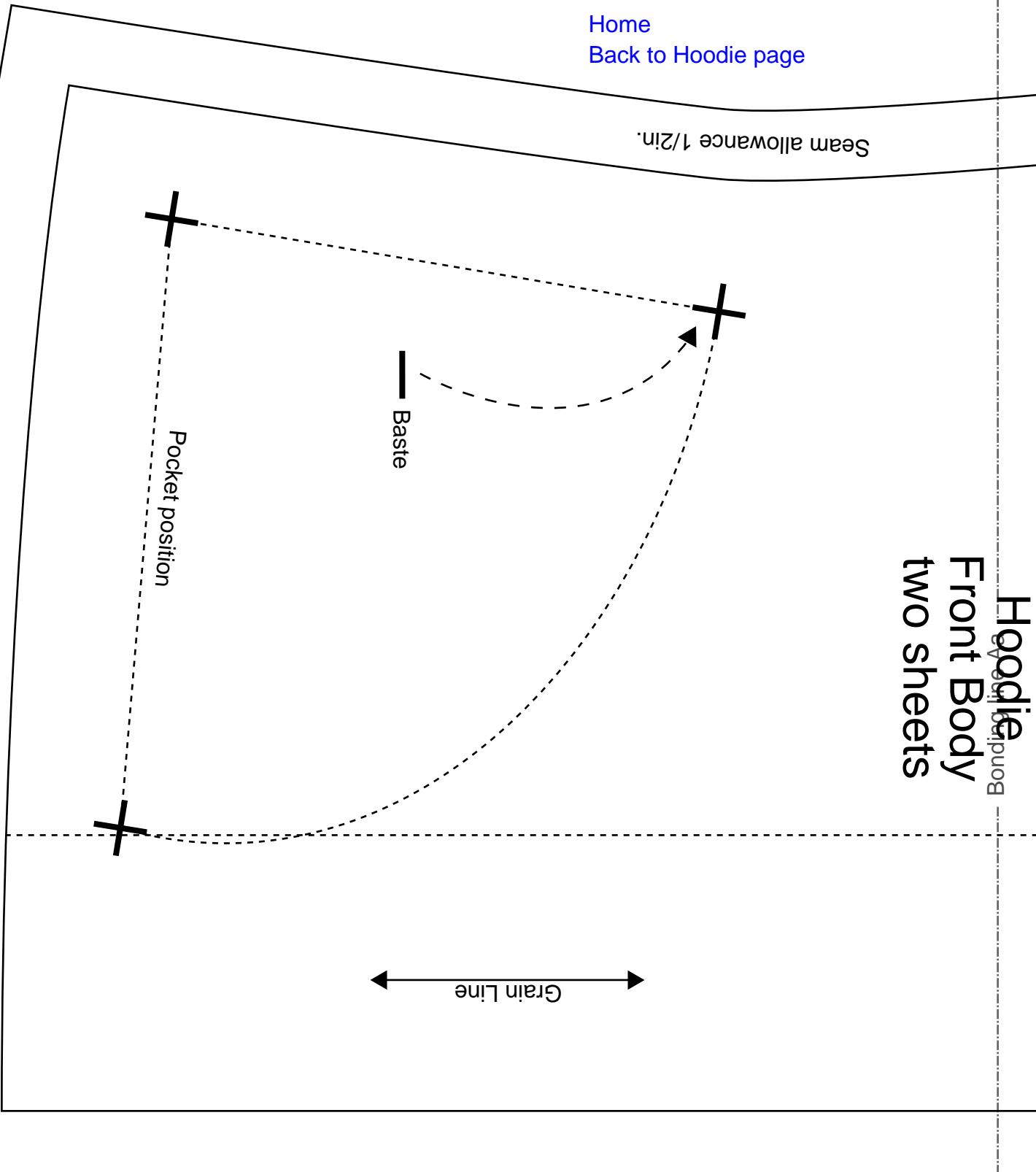


# Hoodie Front Body two sheets

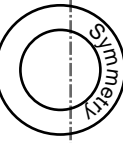
[Home](#)  
[Back to Hoodie page](#)

Seam allowance 1/2in.



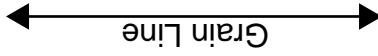
Bonding line AA





**Hoodie**  
**Back Body**  
**one sheets**

Bonding line AA



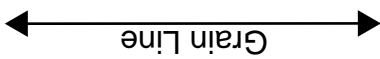
Seam allowance 1/2in.

Bonding line Ba

**COS**

info@cos.com  
http://dr-cos.com/jp  
www.facebook.com/drcoscom

**Hoodie**  
**Facing two sheets**  
**Fusible interlining two sheets**



Seam allowance 1/2in.

Bonding line AB

Bonding line Ab

Facing Line

**DRCOS**  
 SITE <http://dr-cos.info/en> <http://dr-cos.com/lp>  
 MAIL [info@dr-cos.com](mailto:info@dr-cos.com)  
 Twitter [@drcos.com](https://twitter.com/@drcos.com)  
 facebook <https://www.facebook.com/drcos.com>

# Children's



size 8

Hoodie

Front Body

Facing Line

Bonding line BA

Symmetry

# CH

Bonding line BA

# Children's

# 8

size



## Hoodie

## Back Body

Bonding line Ba

Bonding line Bb

**DRCOS**  
SITE: <http://dr-cos.info/> (<http://dr-cos.com/>)  
MAIL: [info@dr-cos.com](mailto:info@dr-cos.com)  
Twitter: <https://twitter.com/dr-cos.com>  
Facebook: <https://www.facebook.com/dr-cos.com>

# Children's

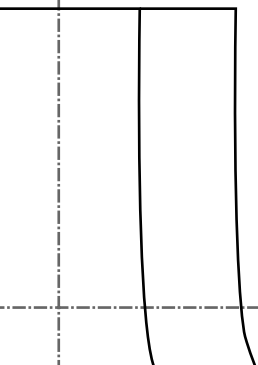
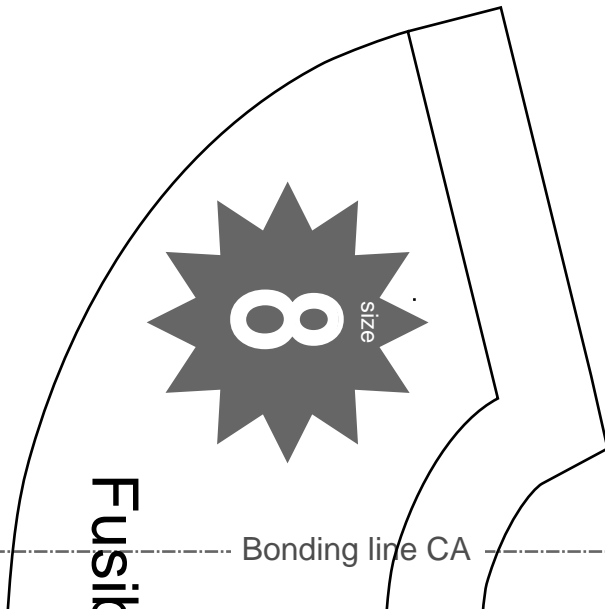
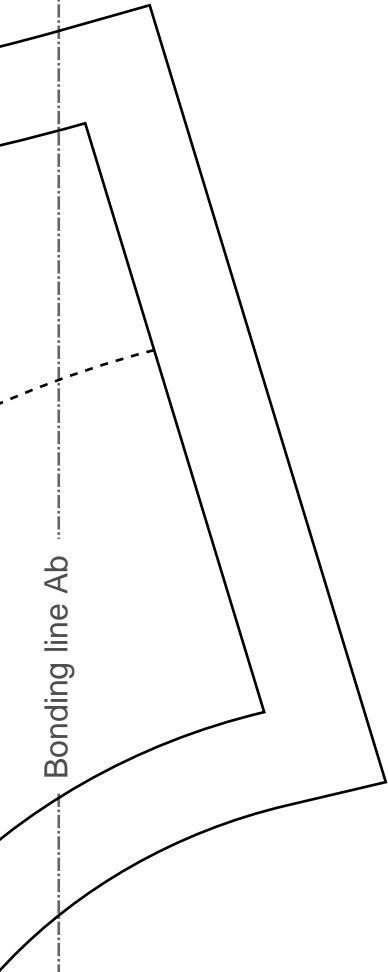
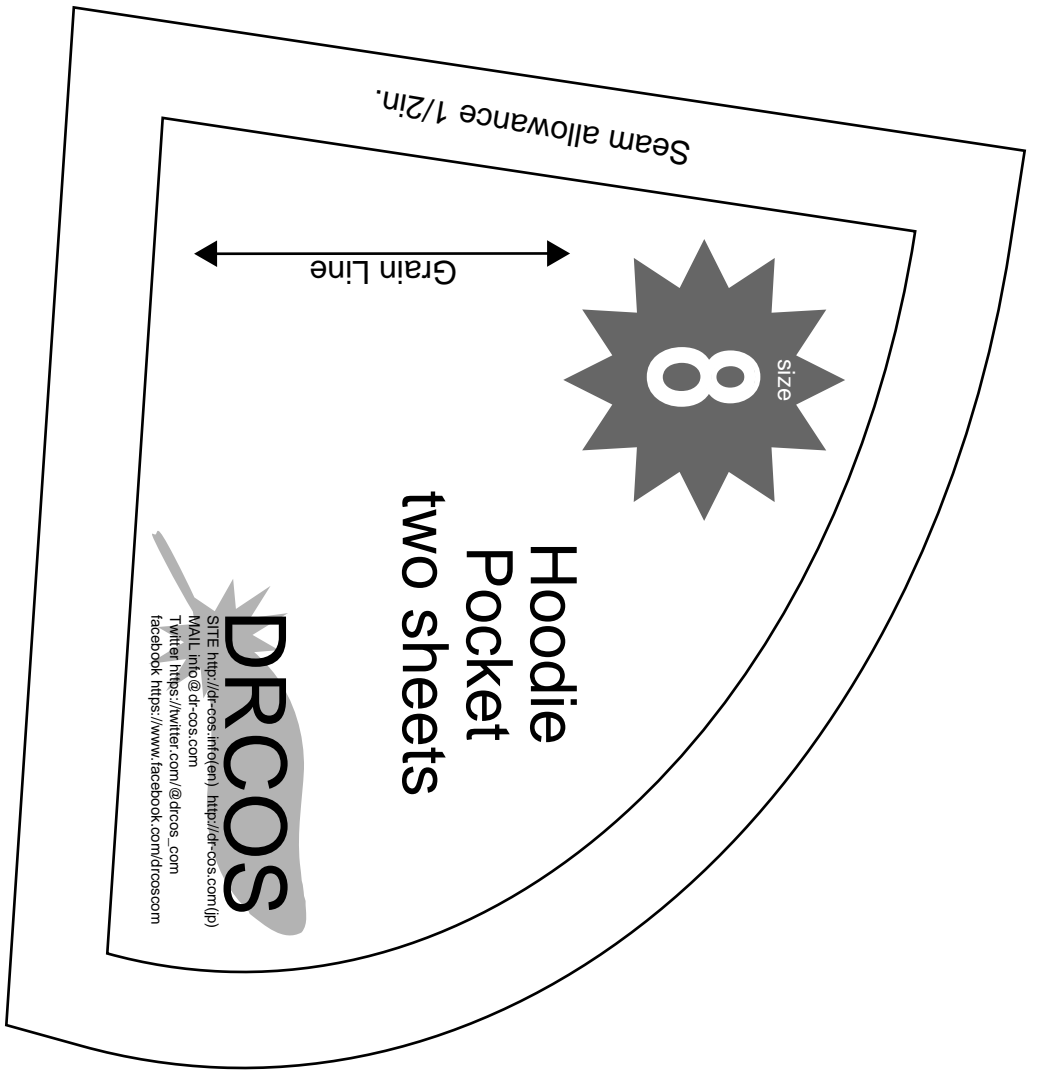
# 8

size

sheets

advance 1/2in.

Bonding line BB



Bonding line CA

Seam allowance 1/2in.

Hoodie  
Facing one sheets  
Fusible interlining one sheets



Bonding line Bc

Grain Line

Bonding line CB

Bonding line Bb



Bonding line DA

Seam allowance 1/2in.

Hoodie  
Hood  
two sheets

Children's  
size  
8

**DRCOS**  
 SITE <http://dr-cos.info/en/> | <http://dr-cos.com/lp>  
 MAIL [info@dr-cos.com](mailto:info@dr-cos.com)  
 Twitter <https://twitter.com/dr-cos.com>  
 facebook <https://www.facebook.com/drcosroom>

Bonding line Bc

Bonding line Bd

Grain Lin

Bonding line DB