

Bonding line AA

Bonding line Aa

LADIES'S  size

Line

Bonding line AA

Sew a 2.76-3.16 inch wide

Bonding line AB

Elastic band th

Bonding line Ba

Bonding line Ca

The upper side is sandwiched between 1.18-1.57 inch wide gathered ruffles on the bias

Bias start position

band through position

Lower side sandwiches 2.76-3.16 inch wide gathered ruffles on the bias

Bonding line AB

inch wide gathered ruffle to the hem

Seam allowance 1/2in.

Bonding line AC

size

Drawers Bias two sheets

Seam allowance 1/2in.

Bonding line AC



Bonding line Da

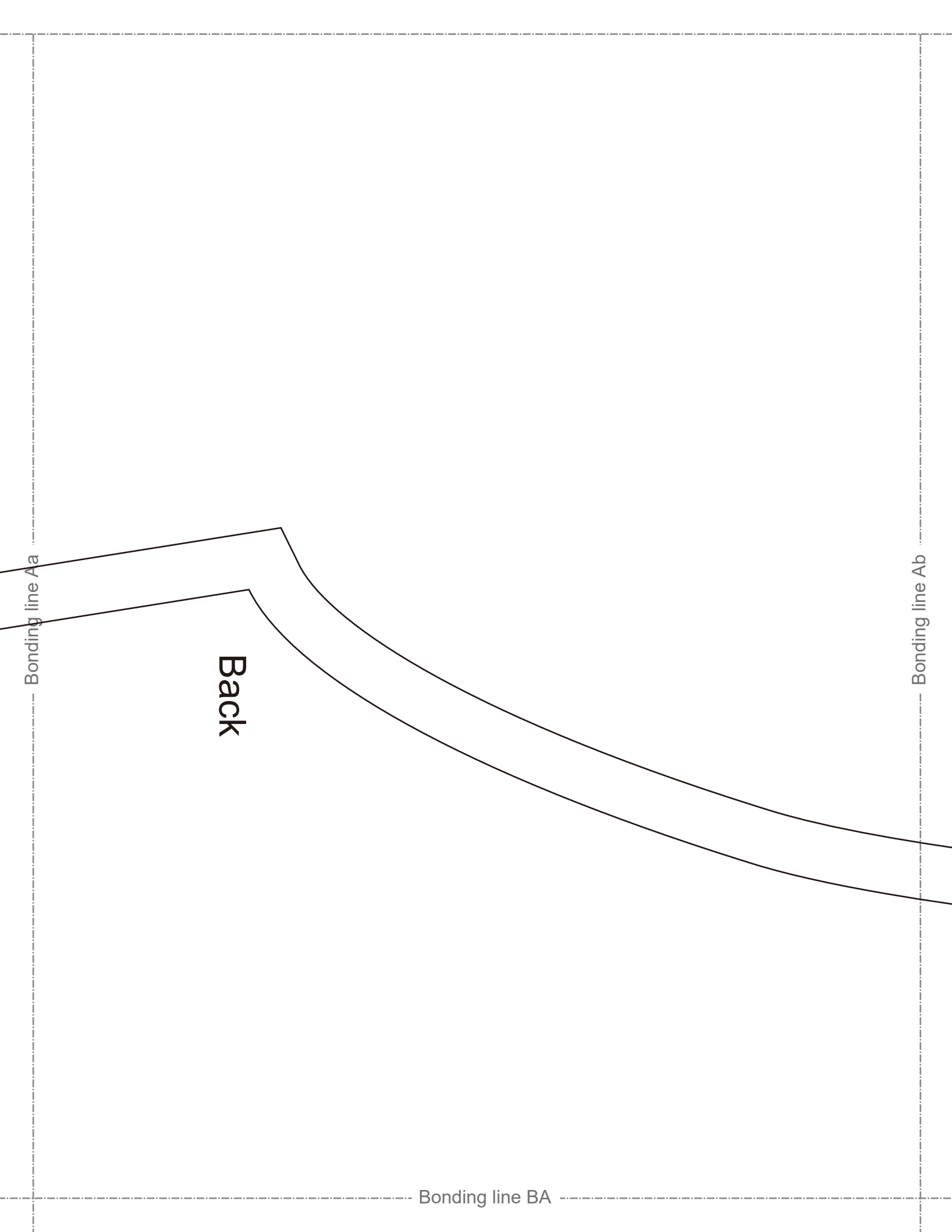
Bonding line AD

Bonding line Aa

Bonding line Ab

Back

Bonding line BA



Bonding line BA

Bonding line Ba

Bonding line Bb



Bonding line BB

Dra
B
two s

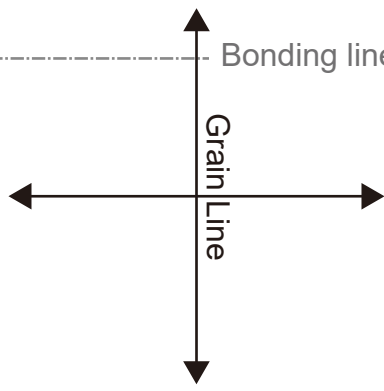
Drawers

Body

Two sheets

Bonding line BB

Grain Line



Bonding line Ca

Bonding line Cb

Bonding line BC

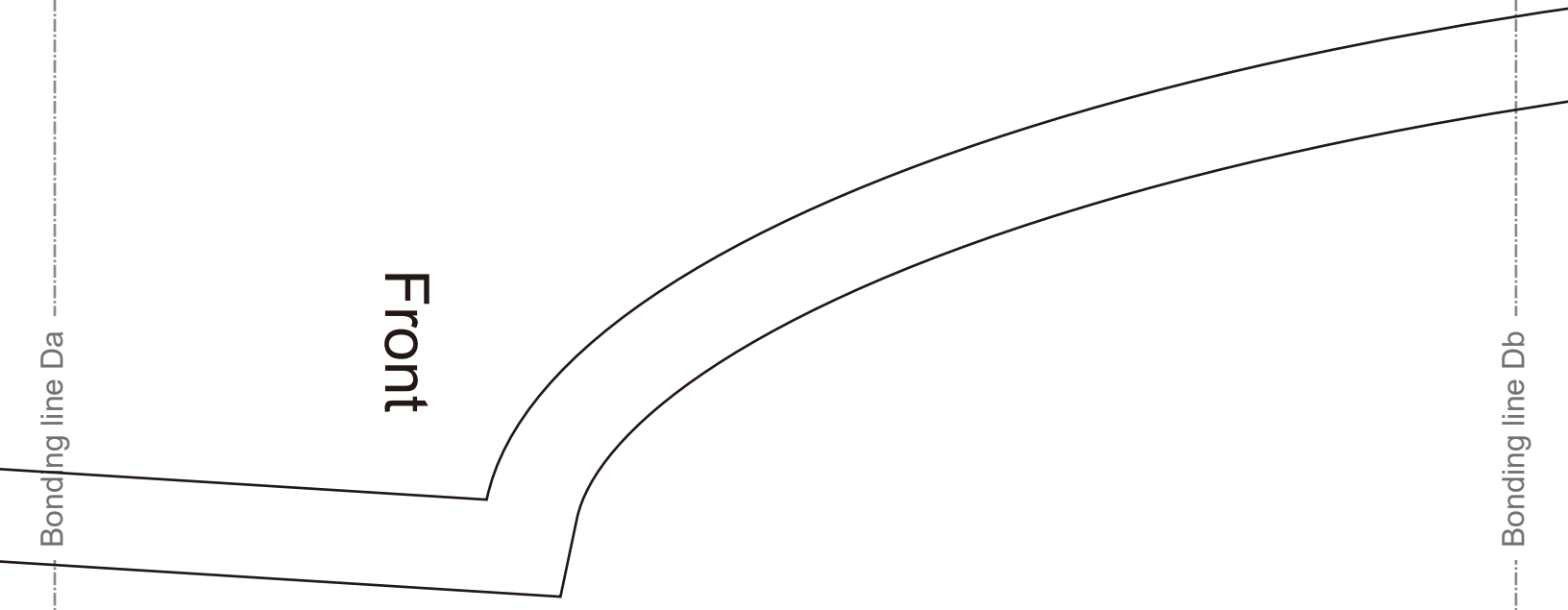
Bonding line BC

Bonding line Da

Front

Bonding line Db

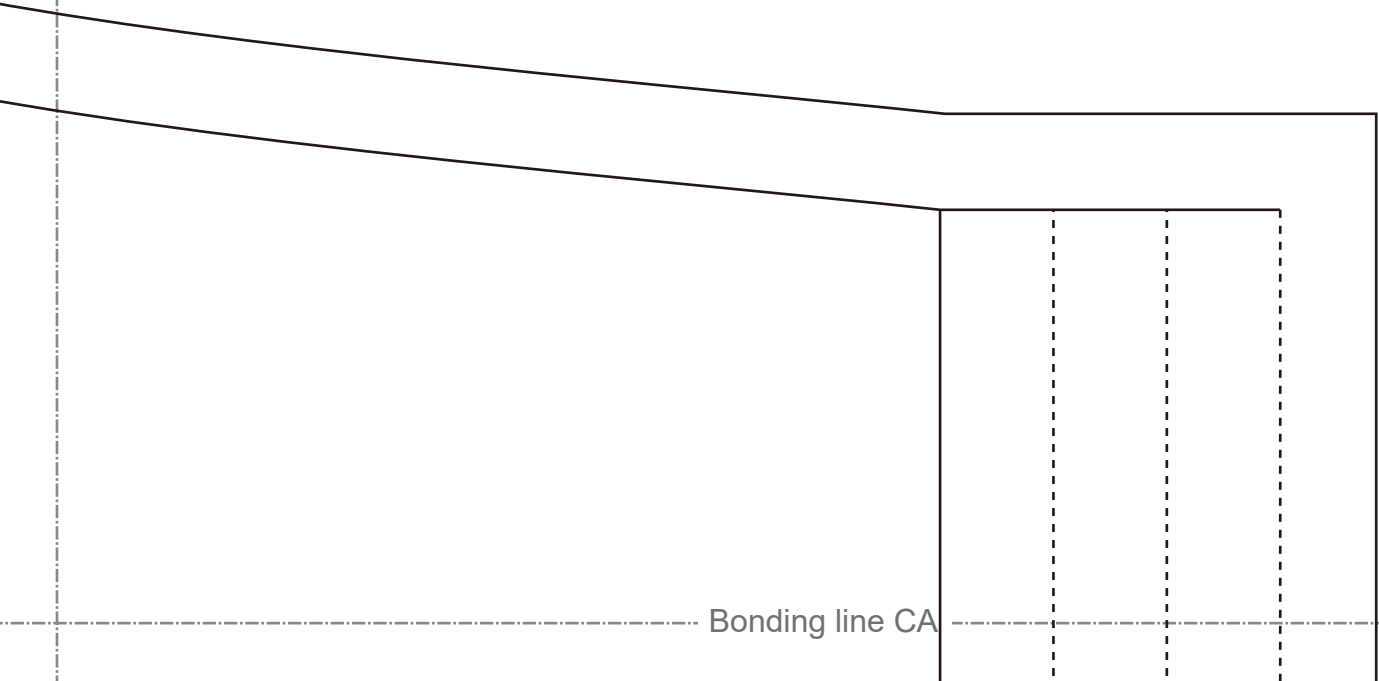
Bonding line BD



Bonding line Ab

Bonding line Ac

Bonding line CA



B

Dra

LADIE

Bonding line Bb

Bonding line CA

Bonding line CB

Cre

Sewi

Sewi

Sewi

Bonding line Bc

Bonding line Cc

Sewing line

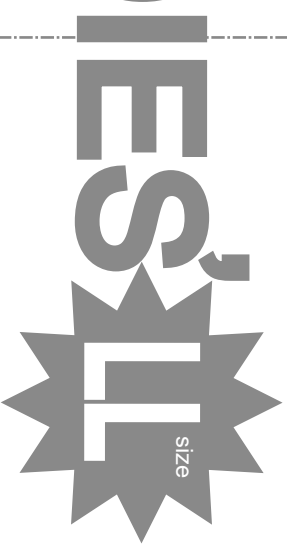
Sewing line

Sewing line

Crease Line

Bonding line B

Bonding line CC



Drawers

Body

Bonding line Cb

Bonding line CC

DRCOS

SITE <http://drcos.info/en/> | <http://drcos.com/fp/>
MAIL info@drcos.com
Twitter | https://twitter.com/drcos_com
facebook | <https://www.facebook.com/drcoscom>

Bonding line Db

Bonding line Dc

Bonding line CD