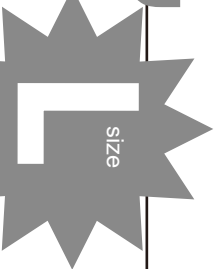


Bonding line Aa

Bonding line AA

Bonding line AA



LADIES'S  size

Sew a 2.76-3.16 inch wide g

Bonding line AB

Elastic band thro

B

Bonding line Ba

Bonding line Ca

The upper side is sandwiched between 1.18-1.57 inch wide gathered ruffles on the bias

Bias start position

and through position

Lower side sandwiches 2.76-3.16 inch wide gathered ruffles on the bias

Bonding line AB

h wide gathered ruffle to the hem

Seam allowance 1/2in.

Bonding line AC

## Drawers Bias two sheets

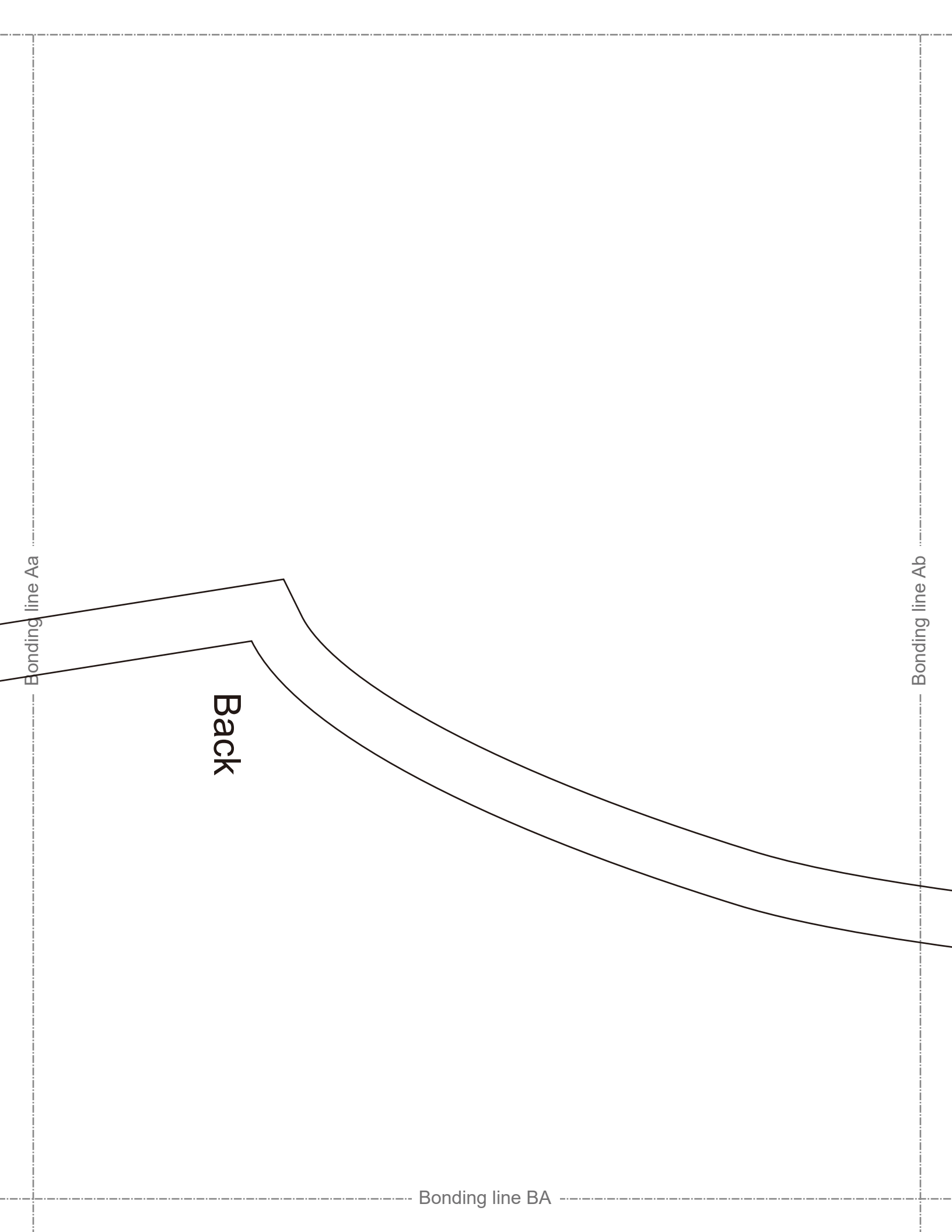
Seam allowance 1/2in.

Bonding line AC



Bonding line Da

Bonding line AD



Bonding line Aa

Bonding line Ab

Back

Bonding line BA

Bonding line BA

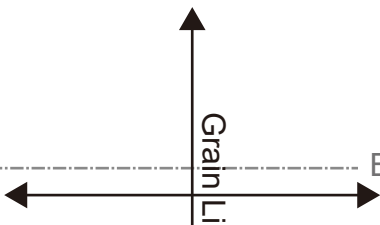
Bonding line Ba

Bonding line Bb

Draw  
Bo  
two st

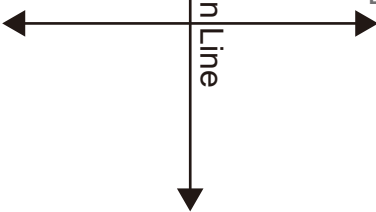
Bonding line BB

Grain Li



Drawers  
Body  
no sheets

Bonding line BB



Grain Line

Bonding line Ca

Bonding line Cb

Bonding line BC

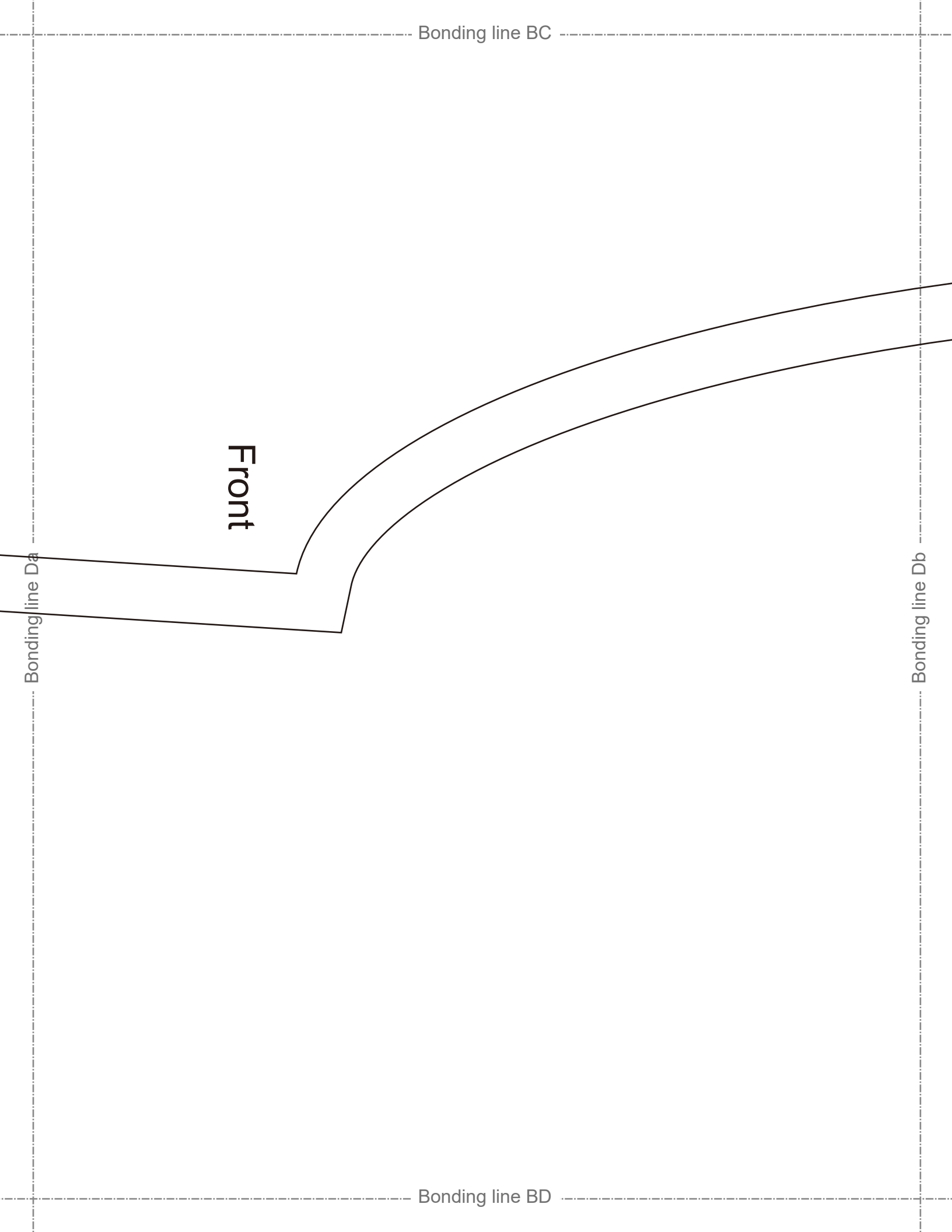
Bonding line BC

Front

Bonding line Da

Bonding line Db

Bonding line BD

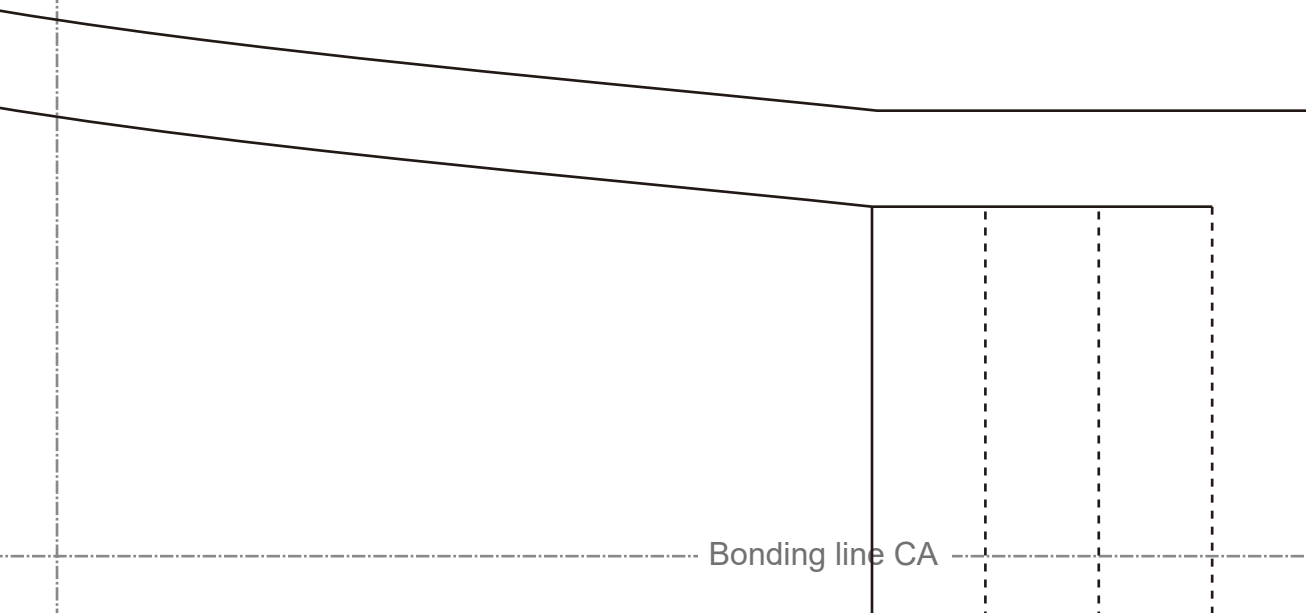




Bonding line Ab

Bonding line Ac

Bonding line CA



Bonding line Bb

# LADIE

Bonding line CA

Bonding line CB

Crease

Sewing I

Sewing I

Sewing I

Bonding line Bc

Bonding line Cc

Sewing line

Sewing line

Sewing line

Crease Line

Bonding line CB

Bonding line Cb



SITE <http://>  
 MAIL [info@](mailto:info@)  
 Twitter [http](http://)  
 facebook [h](http://)

Bonding line CC

Bonding line Db

Bonding line CD

Bonding line Dc

Bonding line CC

# DRCOS

SITE <http://dr-cos.info/en> <http://dr-cos.com/jp>  
MAIL [info@dr-cos.com](mailto:info@dr-cos.com)  
TWITTER [https://twitter.com/drcos\\_com](https://twitter.com/drcos_com)  
FACEBOOK <https://www.facebook.com/drcoscom>