

Bonding line AA

Side Pocket position

Bonding line Aa

Bonding line AA

Grain Line

Flap position

argopants
ont Bodice
cut two

Bonding line BB



Bonding line AB

Bonding line AB

Seam allowance 1/2in.



Dart



Bonding line Ca

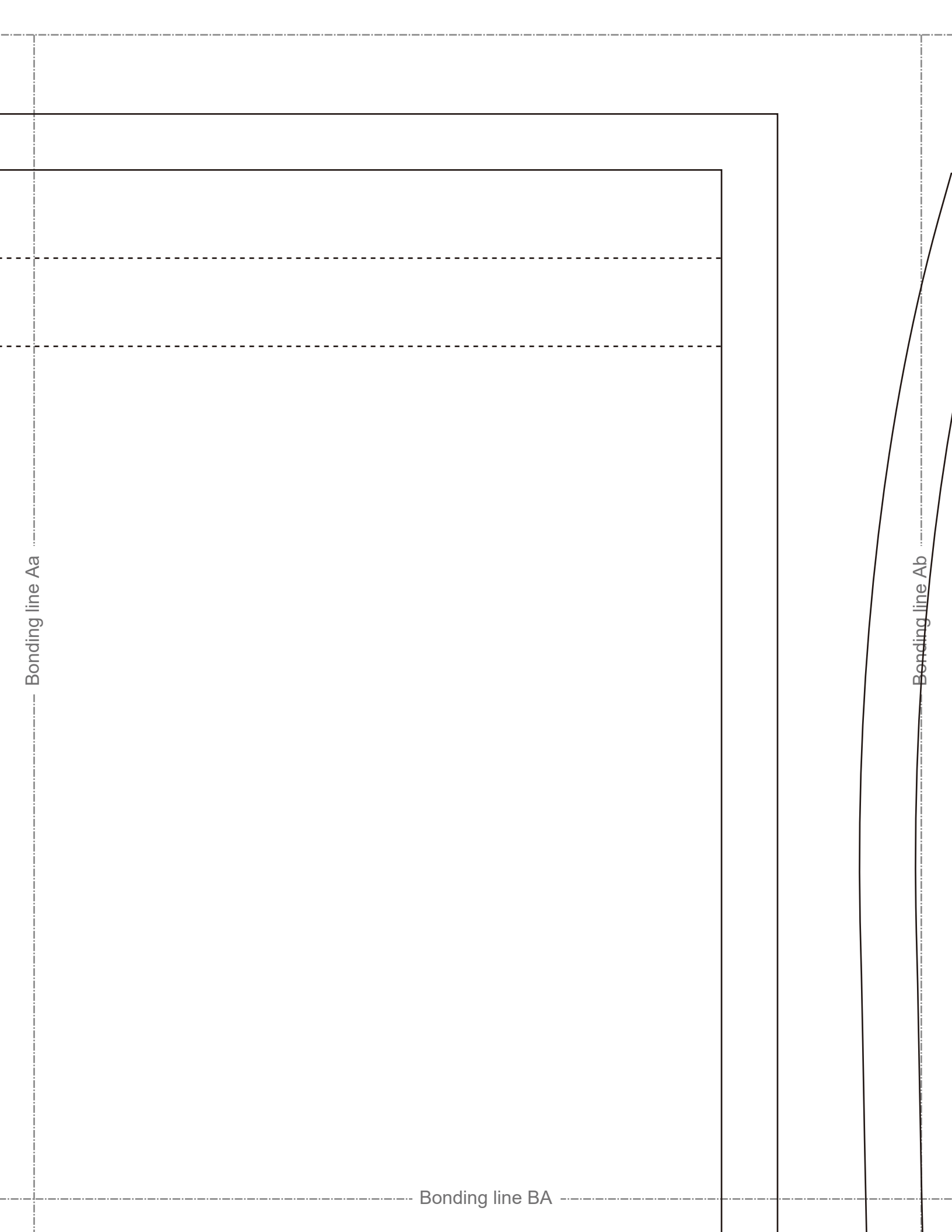
Dart

Bonding line AC

Bonding line Aa

Bonding line BA

Bonding line Ab



MEN

Cargo
Front Panel
cut

Bonding line BA

Bonding line BA

Seam allowance 1/2in.

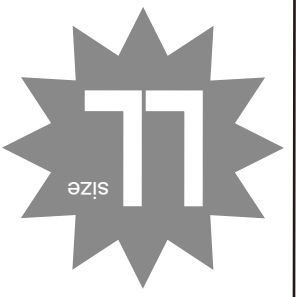
Sew double-stitch

Bonding line BB

Bonding line Cb

Seam allowance 1/2in.

Cargopants Facing Interfacing cut one



DRCOS
 SITE: <https://dr-cos.info/en/> <https://dr-cos.com/jp/>
 MAIL: info@dr-cos.com
 Twitter: <https://twitter.com/dr-cos.com/>
 pinterest: <https://www.pinterest.jp/dr-cosinfo>

Grain Line

Crotch end

Bonding line BB

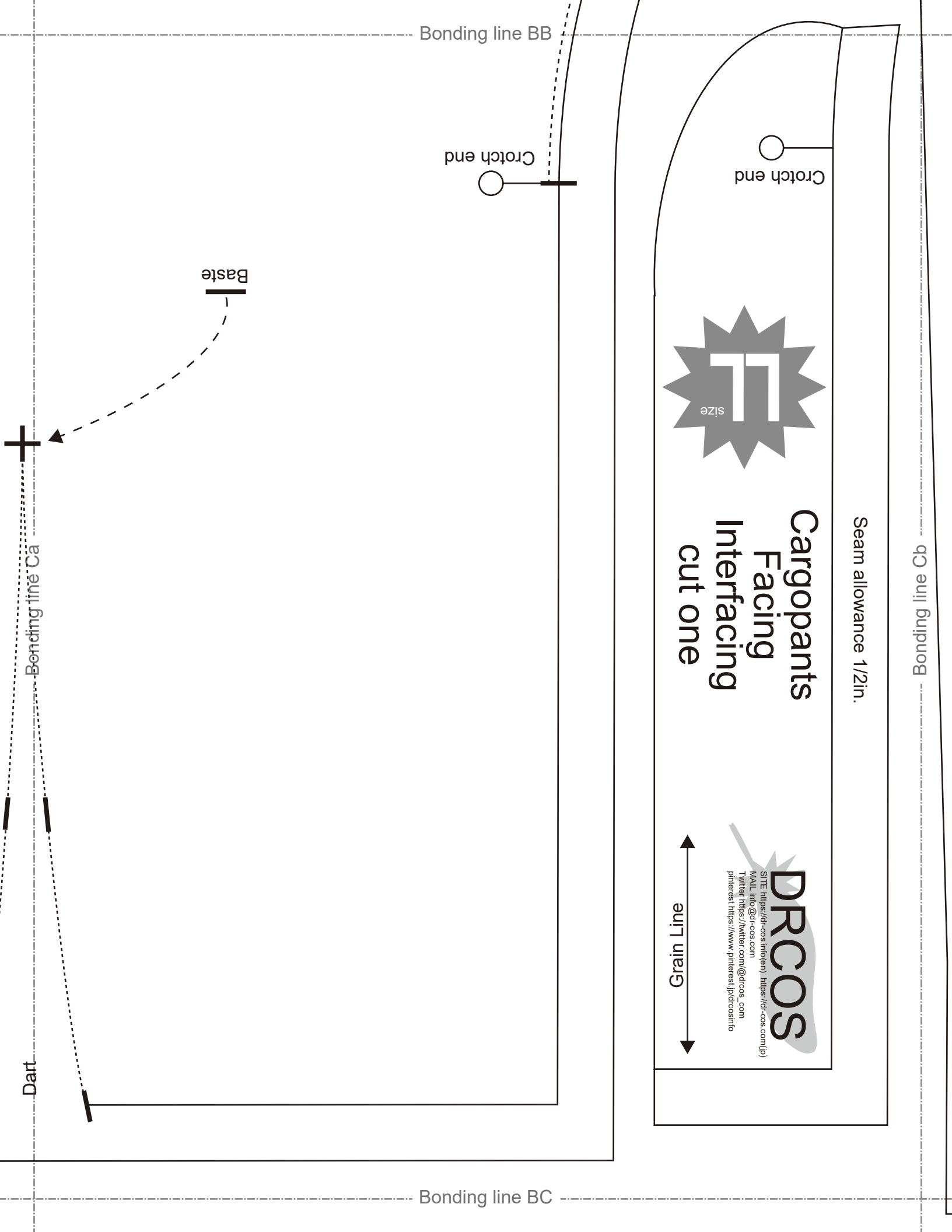
Crotch end

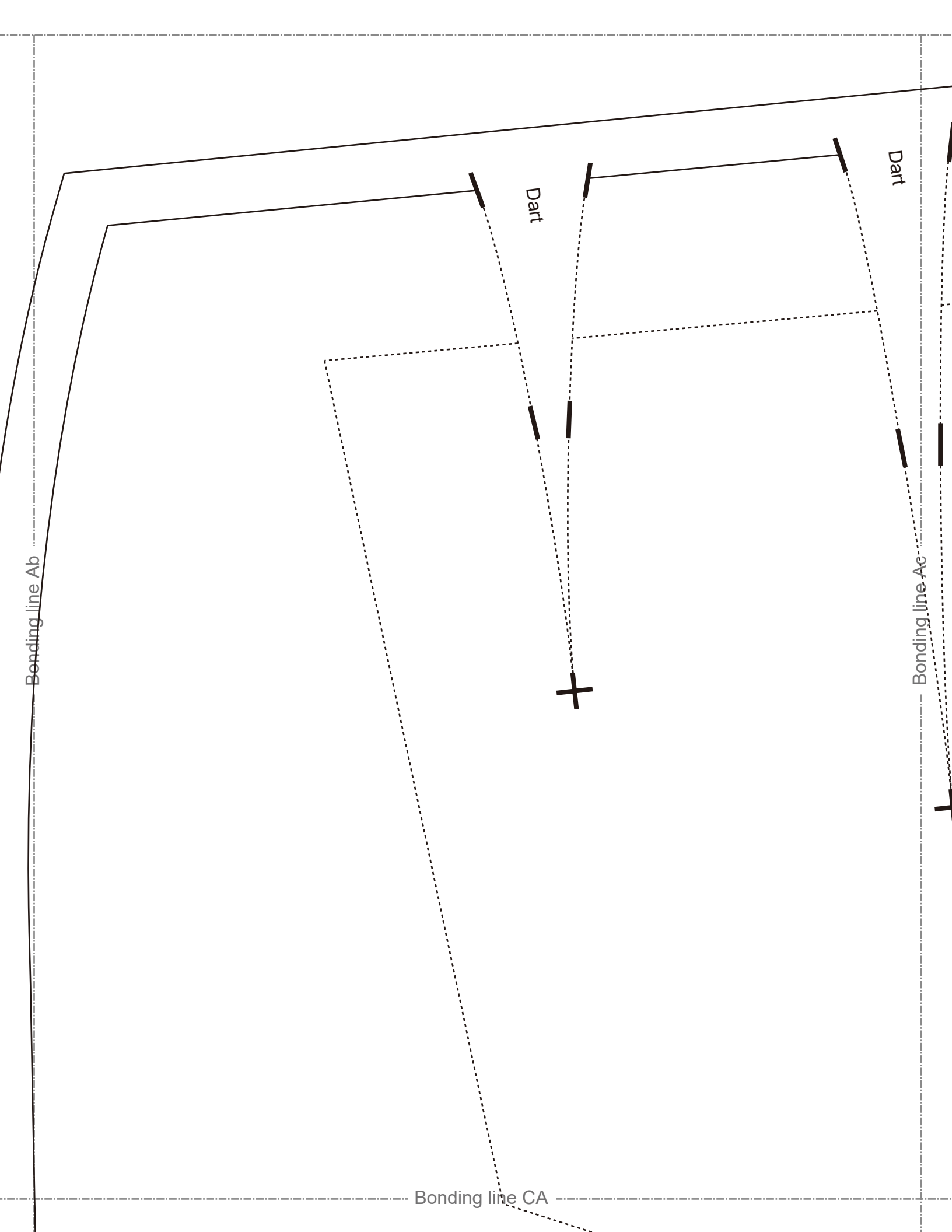
Bonding line BC

Baste

Bonding line Ca

Dart





Bonding line CA



Sealing allowance 1/2in

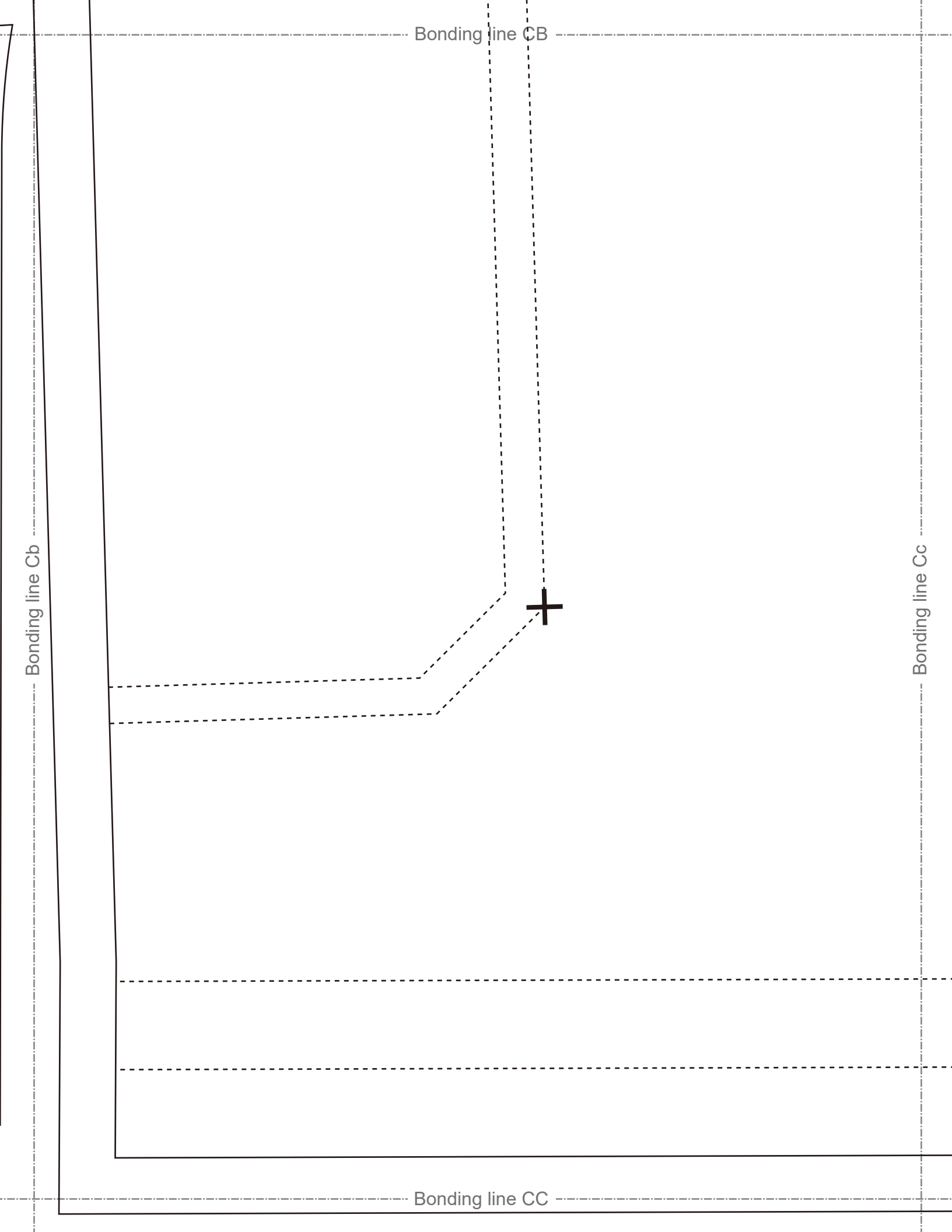
Bonding line Bc

DRCOS

SITE [https://dr-cos.info\(en\)](https://dr-cos.info(en)) [https://dr-cos.com\(jp\)](https://dr-cos.com(jp))
MAIL info@dr-cos.com
Twitter https://twitter.com/drcos_com
pinterest <https://www.pinterest.jp/drcosinfo>



Bonding line CB



Bonding line CC

Bonding line Db

Bonding line Dc

Bonding line CD

M

Bonding line Eb

Bonding line CD

Bonding line Ec



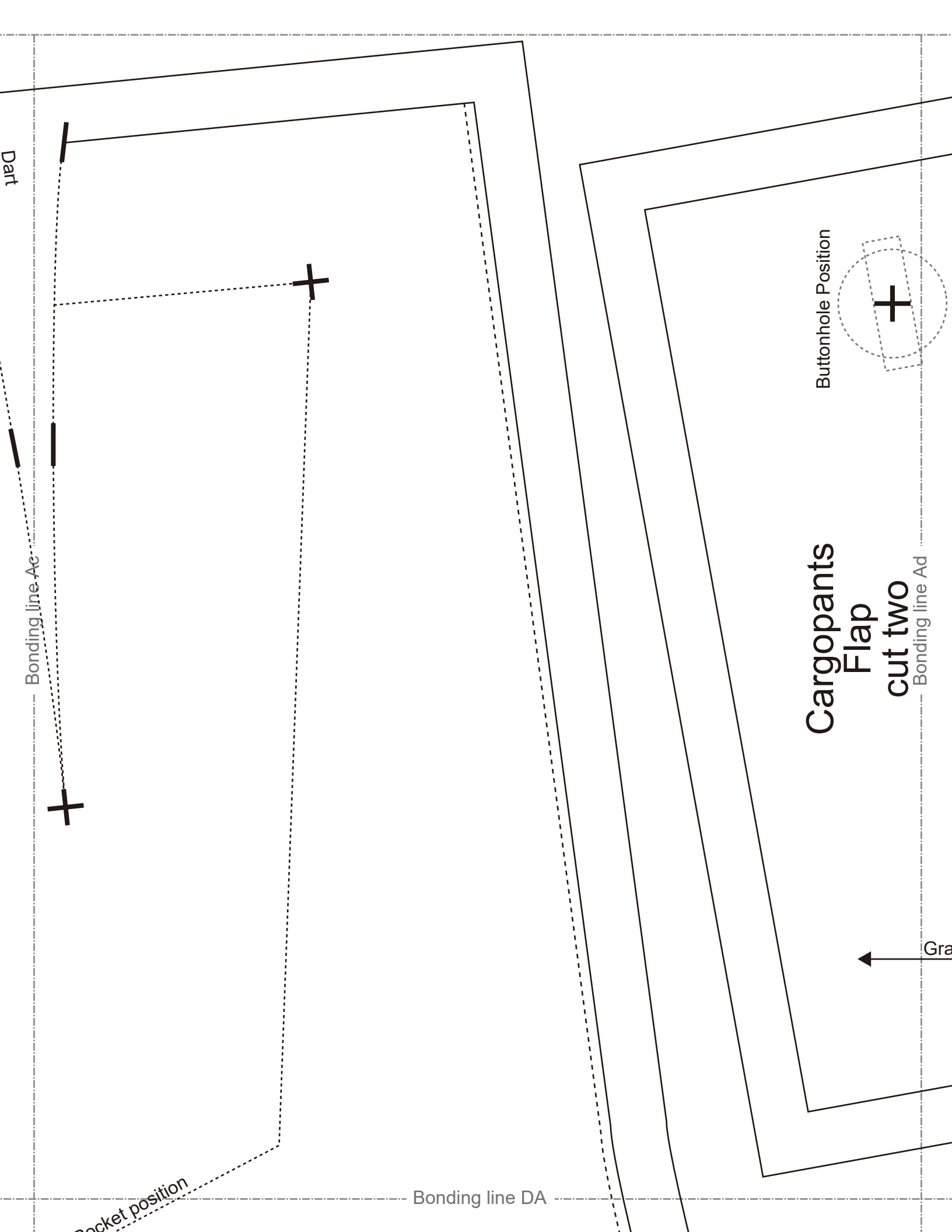
Bonding line CE

Bonding line Fb

Bonding line CE

MEN'S **IT**
size

Bonding line Fc



Dart

Bonding line Ac

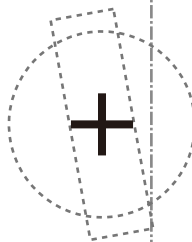


Pocket position

Bonding line DA

Cargopants
Flap
cut two

Buttonhole Position



Bonding line Ad

Gra



Pocket position

Bonding line DA

Sew double-stitch

Bonding line Bc

Bonding line Bd

MEN'S **LL** size

Cargopants
Back Bodice
cut two

Bonding line DB



Bonding line DB



Grain Line

Bonding line Cc

Bonding line Cd

Bonding line DC

MEN'S **LL** size

Cargopants
Back Bodice
(lower part)
cut two

Bonding line DD



Grain Line

Bonding line Ec

Bonding line Ed

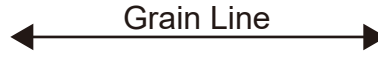
Seam allowance 1in.

Seam allowance 1/2in.

Bonding line DE

Bonding line DE

Cargopants
Back Bodice
(lower part)
cut two



Bonding line Fc

Bonding line Fd

CUT TWO

Bonding line Ad

Grain Line

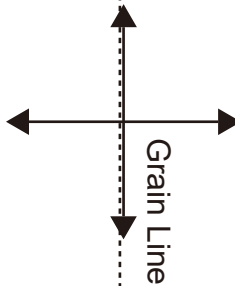
MEN'S ^{size} T

DRCOS

SITE <https://dr-cos.info/en> <https://dr-cos.com/jp>
MAIL info@dr-cos.com
Twitter https://twitter.com/dr-cos_com
Pinterest <https://www.pinterest.jp/drcosinfo>

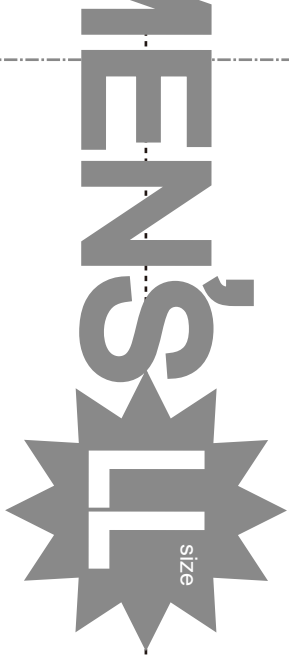
Seam allowance 1/2in.

Bonding line EA



ME

Bonding line Ae



**Cargopant
Waist Band
Interfacing
cut one**

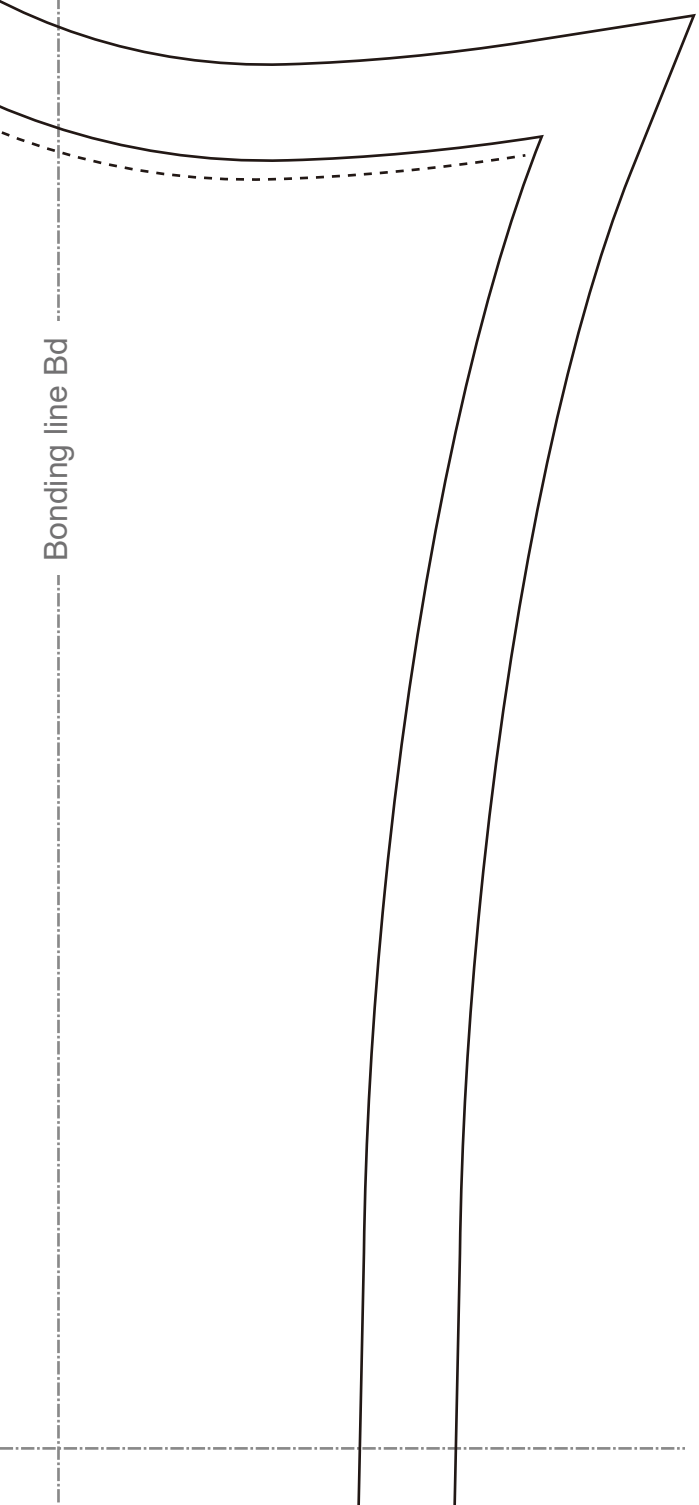
Seam allowance 1/2in.

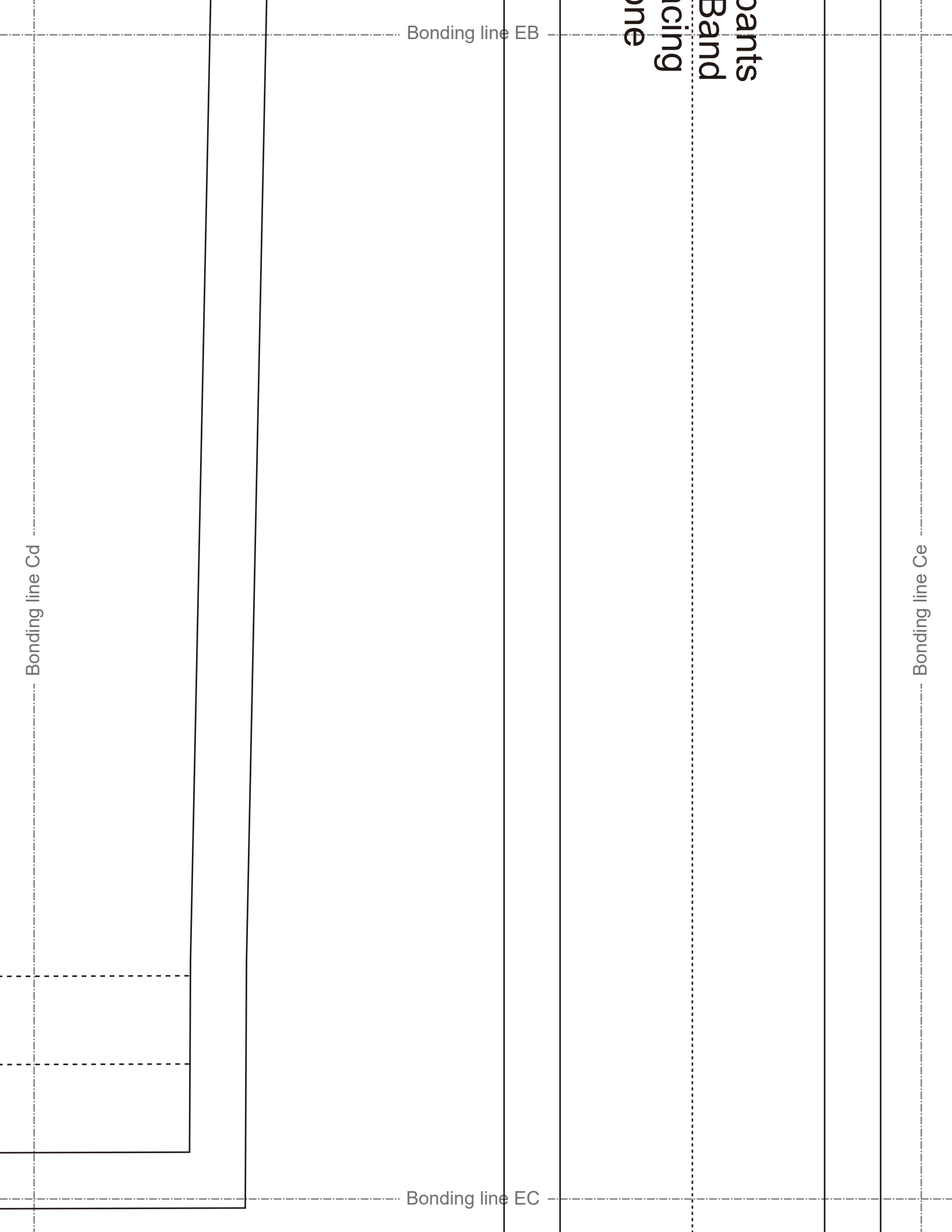
Bonding line EA

Bonding line EB

Bonding line Bd

Bonding line Be





Bonding line EB

Bonding line EC

Bonding line Cd

Bonding line Ce

Band
Structure

Bonding line EC

DRCOS

SITE [https://dr-cos.info\(en\)](https://dr-cos.info(en)) [https://dr-cos.com\(jp\)](https://dr-cos.com(jp))
MAIL info@dr-cos.com
Twitter [@drcos_com](https://twitter.com/@drcos_com)
pinterest <https://www.pinterest.jp/drcosinfo>

Bonding line Dd

Seam allowance 1/2in.

Bonding line De

SITE [https://dr-cos.info\(en\)](https://dr-cos.info(en)) [https://dr-cos.com\(jp\)](https://dr-cos.com(jp))
MAIL info@dr-cos.com
Twitter [@drcos_com](https://twitter.com/@drcos_com)
pinterest <https://www.pinterest.jp/drcosinfo>

DRCOS

extension

Bonding line ED

DRCOS

Bonding line ED

DRCOS

SITE <https://dr-cos.info/en> <https://dr-cos.com/jp>

MAIL info@dr-cos.com

Twitter [@drcos_com](https://twitter.com/@drcos_com)

pinterest <https://www.pinterest.jp/drcosinfo>

MEN'S T-SHIRT



Cargopants
Fly extention
Interfacing
cut one

Crotch end



Seam allowance 1/2in.

Bonding line Ed

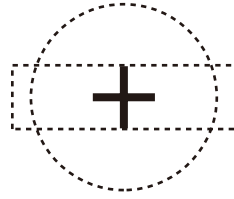
Bonding line Ee

Bonding line EE

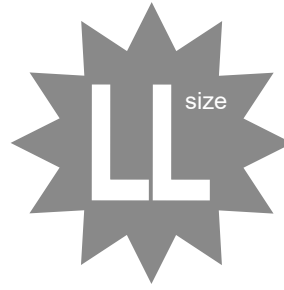
Bonding line Fd

Bonding line EE

Seam allowance 1in.



Button Position



MEN'S

Cargopants
Side Pocket
cut two

Bonding line Fe

Sea

DRCOS

SITE [https://dr-cos.info\(en\)](https://dr-cos.info(en)) [https://dr-cos.com\(jp\)](https://dr-cos.com(jp))
MAIL info@dr-cos.com
Twitter https://twitter.com/drcos_com
pinterest <https://www.pinterest.jp/drcosinfo>

MEN'S  **LL** size

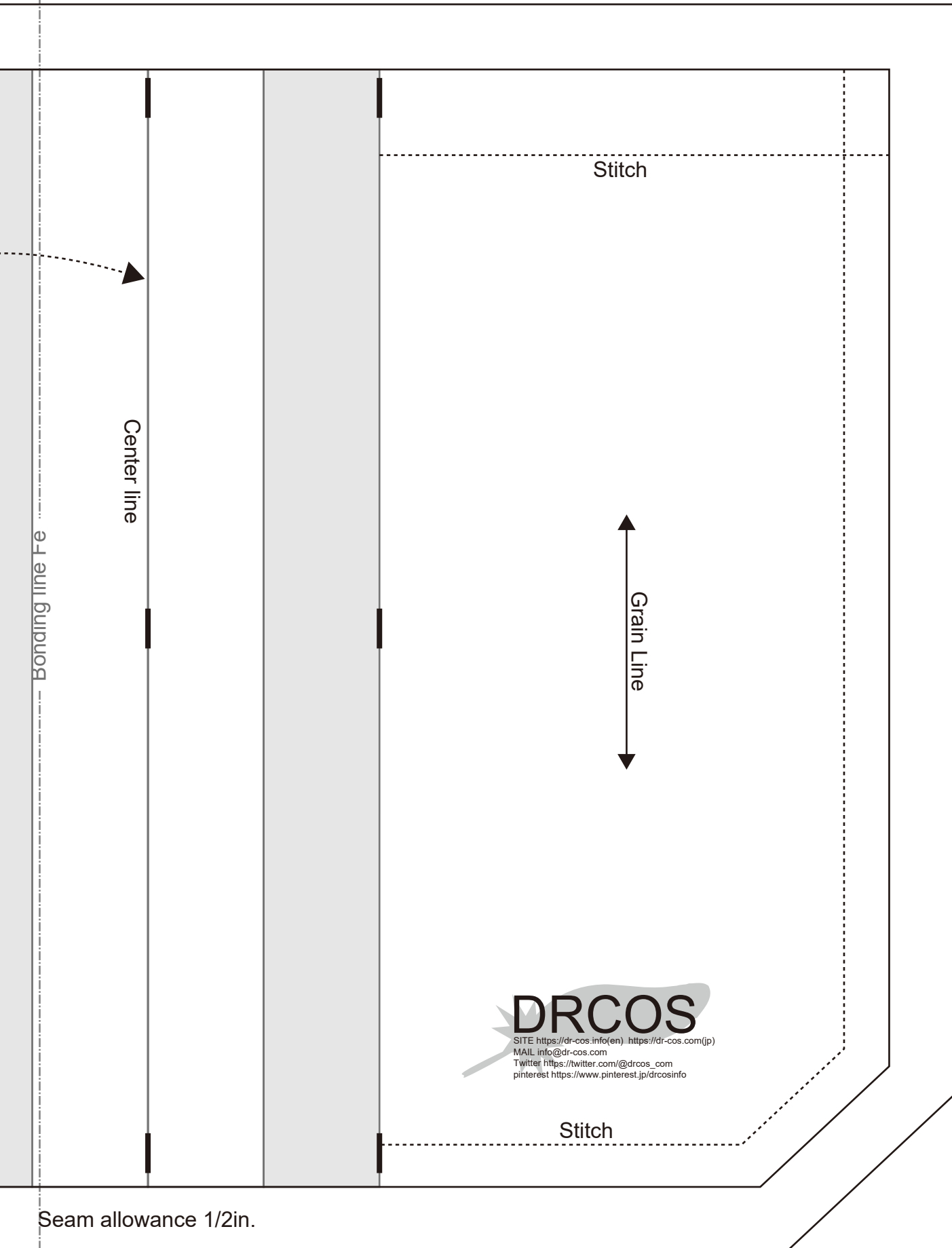
Cargopants
Back Pocket
cut two



Grain Line

Seam allowance 1/2in.

Bonding line FE



Center line

Stitch

Grain Line

Bonding line Fe

Bonding line Ff

Seam allowance 1/2in.

DRCOS
 SITE [https://dr-cos.info\(en\)](https://dr-cos.info/en) [https://dr-cos.com\(jp\)](https://dr-cos.com/jp)
 MAIL info@dr-cos.com
 Twitter https://twitter.com/drcos_com
 pinterest <https://www.pinterest.jp/drcosinfo>

Stitch