

Seam allowance 1/2in.

Bonding line AB

Baste



Cargopants  
Front Bodice  
cut two

Flap position

Bonding line AA

Gra

Bonding line Ba

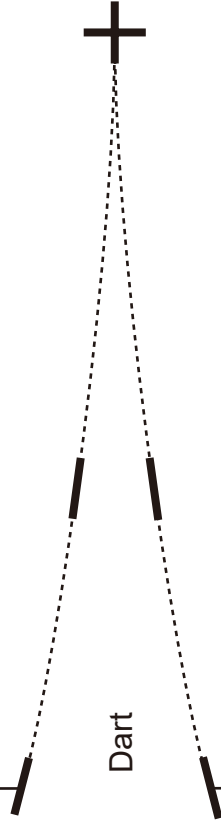


Seam

Bonding line AB

[Pinterest https://www.pinterest.jp/drcosinfo](https://www.pinterest.jp/drcosinfo)  
[Twitter https://twitter.com/drcos\\_com](https://twitter.com/drcos_com)  
[MAIL info@drcos.com](mailto:info@drcos.com)  
[SITE https://drcos.info/en](https://drcos.info/en) [https://drcos.com\(jp\)](https://drcos.com/jp)

**DRCOS**



Dart



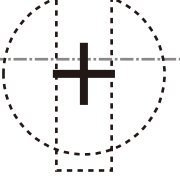
Dart

Bonding line Ca

Bonding line AC



CS



Button Position

Bonding line AC



# LADIES'

## Cargopants Side Pocket cut two

Center line

Da

B

Stitch



Grain Line

Stitch

**DRCOS**  
 SITE <https://drcos.mtck/en/> <https://drcos.com/jp/>  
 MAIL [info@drcos.com](mailto:info@drcos.com)  
 Twitter [@drcos\\_com](https://twitter.com/drcos_com)  
 pinterest <https://www.pinterest.jp/drcosinfo>

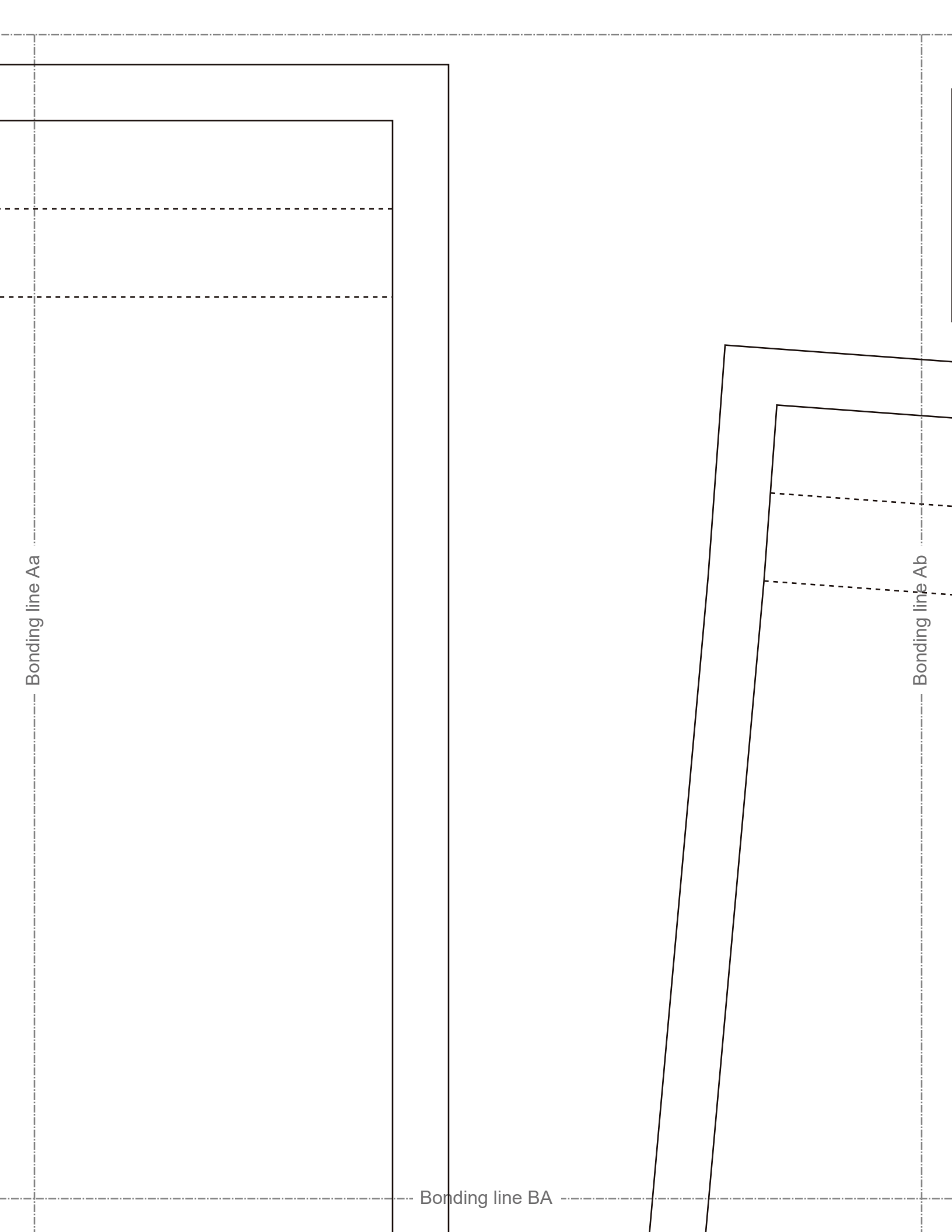
Seam allowance 1/2in.

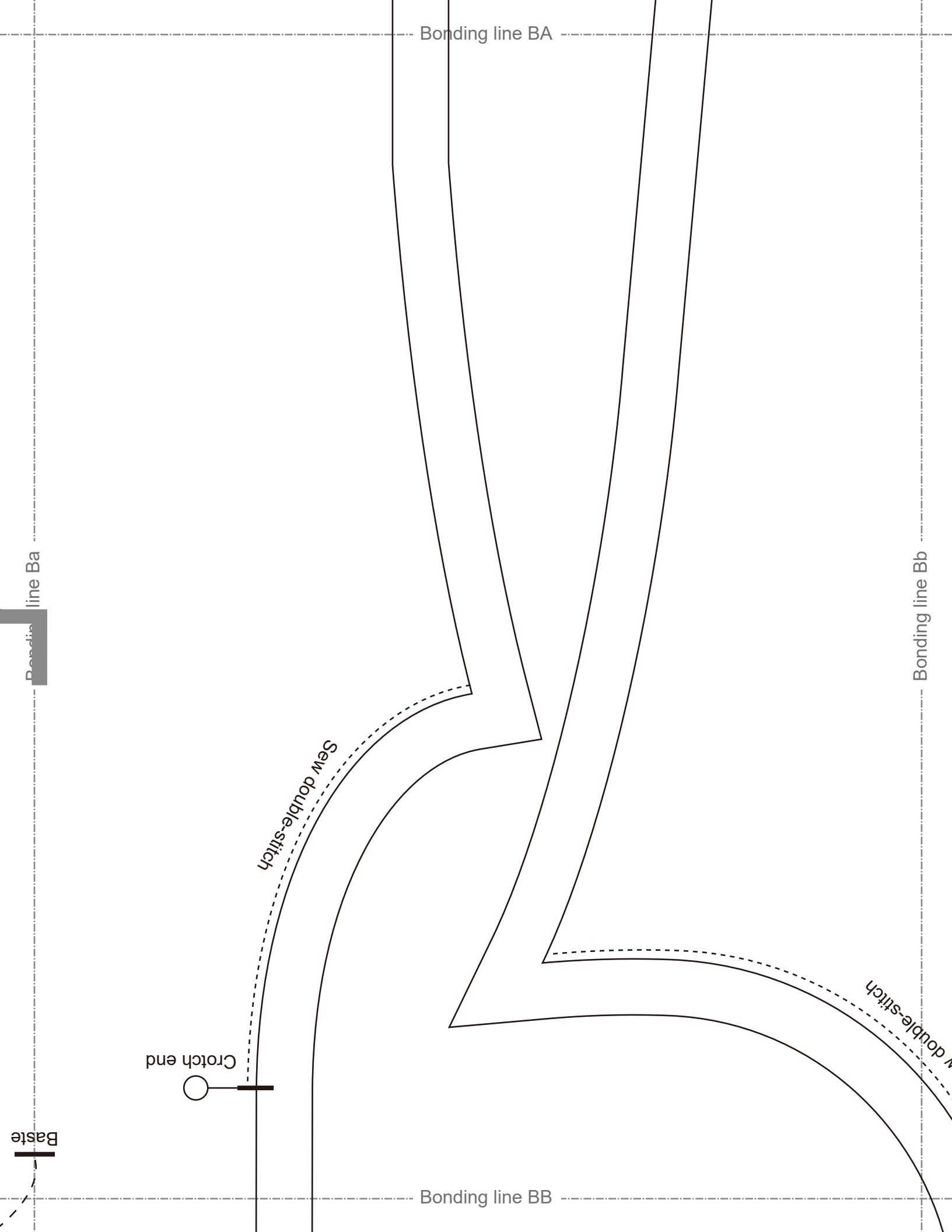
Bonding line AD

Bonding line Aa

Bonding line BA

Bonding line Ab

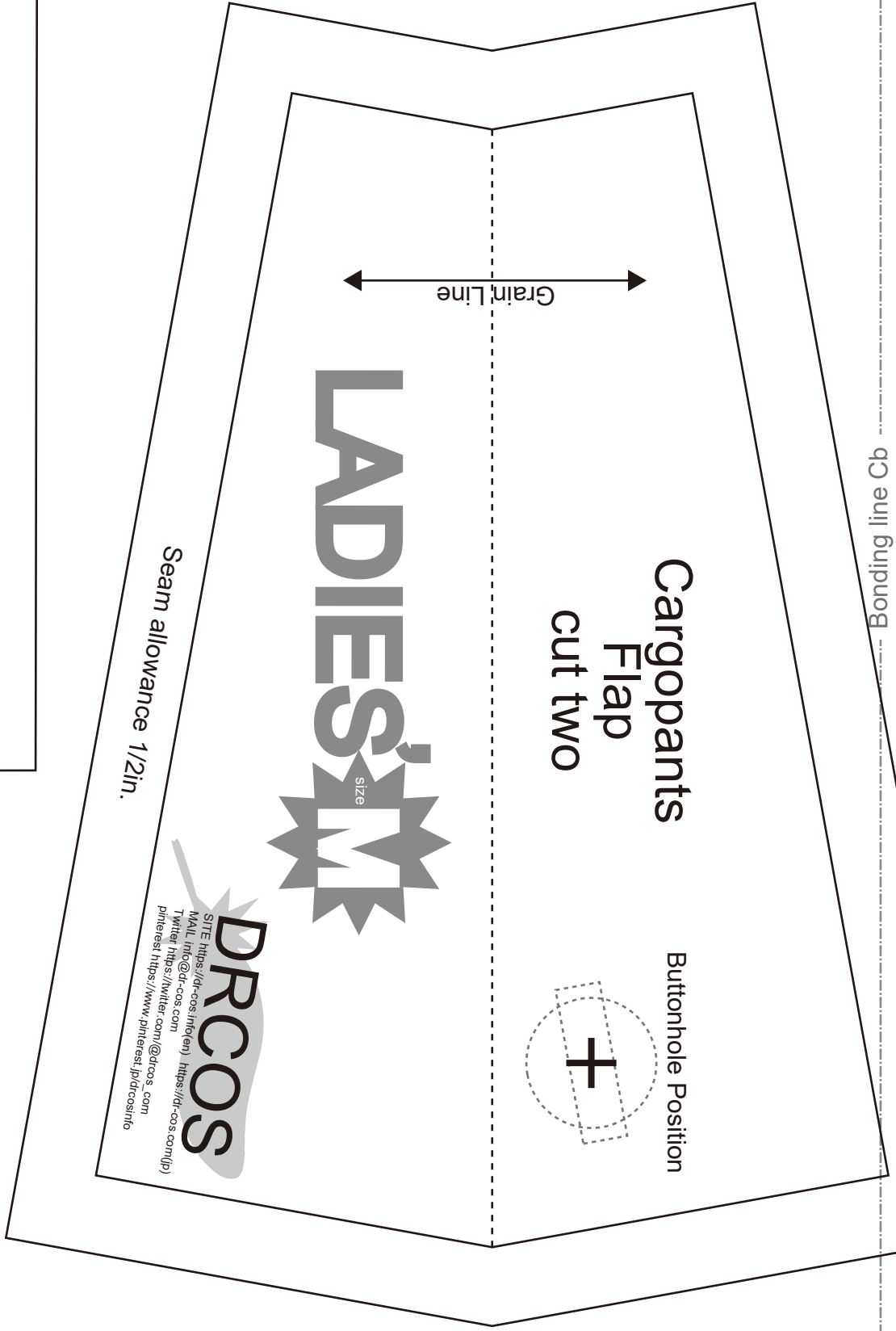




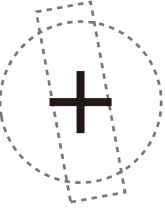
Bonding line BB

Bonding line Ca

Bonding line Cb



Cargopants  
Flap  
cut two



Buttonhole Position

LADIES'S  
size  
M

**DRCOS**

SITE <https://dr-cos.info/en> | <https://dr-cos.com/jp>  
 MAIL [info@dr-cos.com](mailto:info@dr-cos.com)  
 Twitter <https://twitter.com/dr-cos>  
 Pinterest <https://www.pinterest.jp/dr-cos/info>

Seam allowance 1/2in.

Grain Line

Bonding line BC

Da

B

**DRCOS**

SITE [https://dr-cos.info\(en\)](https://dr-cos.info(en)) [https://dr-cos.com\(jp\)](https://dr-cos.com(jp))  
MAIL [info@dr-cos.com](mailto:info@dr-cos.com)  
Twitter [@drcos\\_com](https://twitter.com/@drcos_com)  
pinterest <https://www.pinterest.jp/drcosinfo>

**LADIES'** size **M**

Cargopants  
Back Pocket  
cut two



Seam allowance 1/2in.

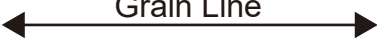
Bonding line Db



SITE <https://dr-cos.info/en> <https://dr-cos.com/jp>  
MAIL [info@dr-cos.com](mailto:info@dr-cos.com)  
Twitter [https://twitter.com/drcos\\_com](https://twitter.com/drcos_com)  
Pinterest <https://www.pinterest.jp/drcosinfo>

**DRCOS**

Grain Line



Cargopants  
Facing  
Interfacing  
cut one



Crotch end



Seam allowance 1/2in.

Bonding line Ab

Bonding line Ac

Bonding line CA



Bonding line CA



Grain Line

Cargopants  
Back Bodice  
cut two

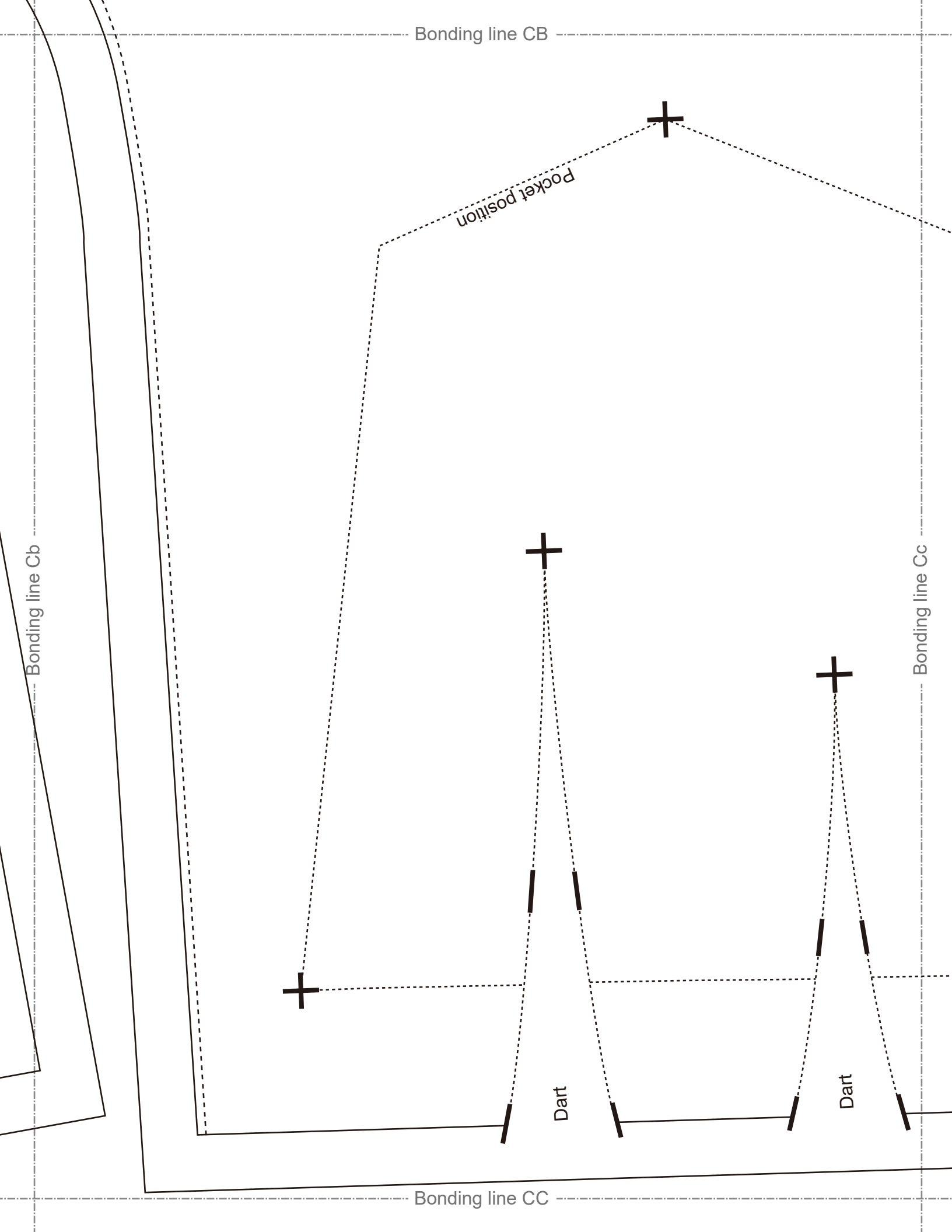
LADIES' <sup>size</sup> M

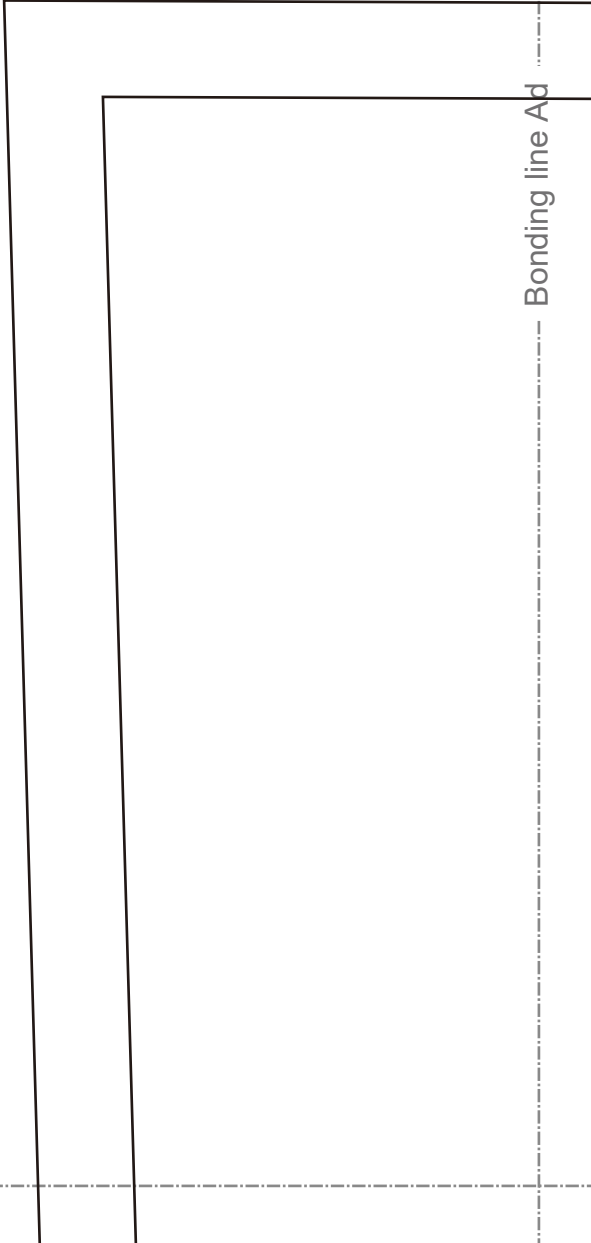
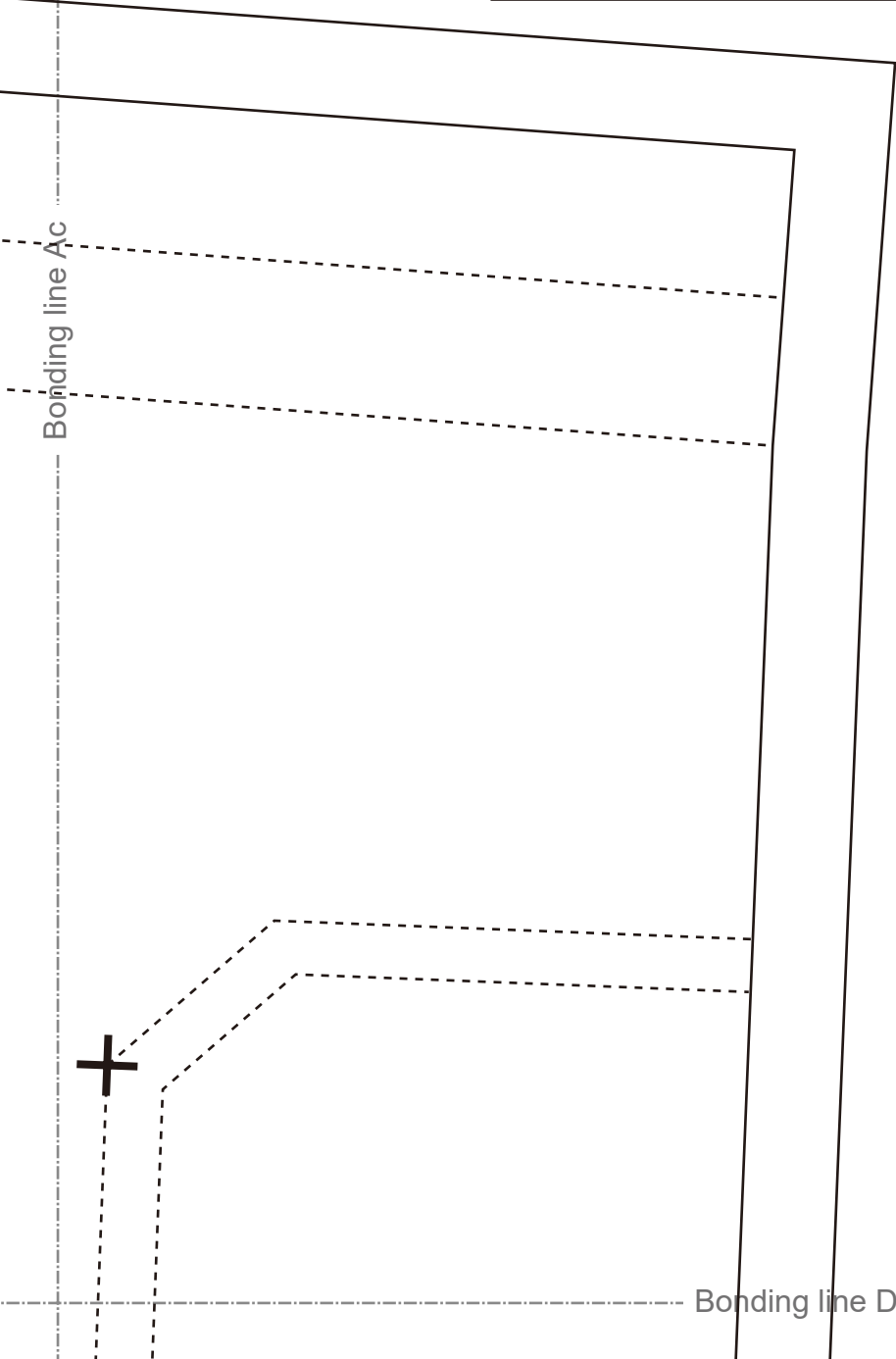
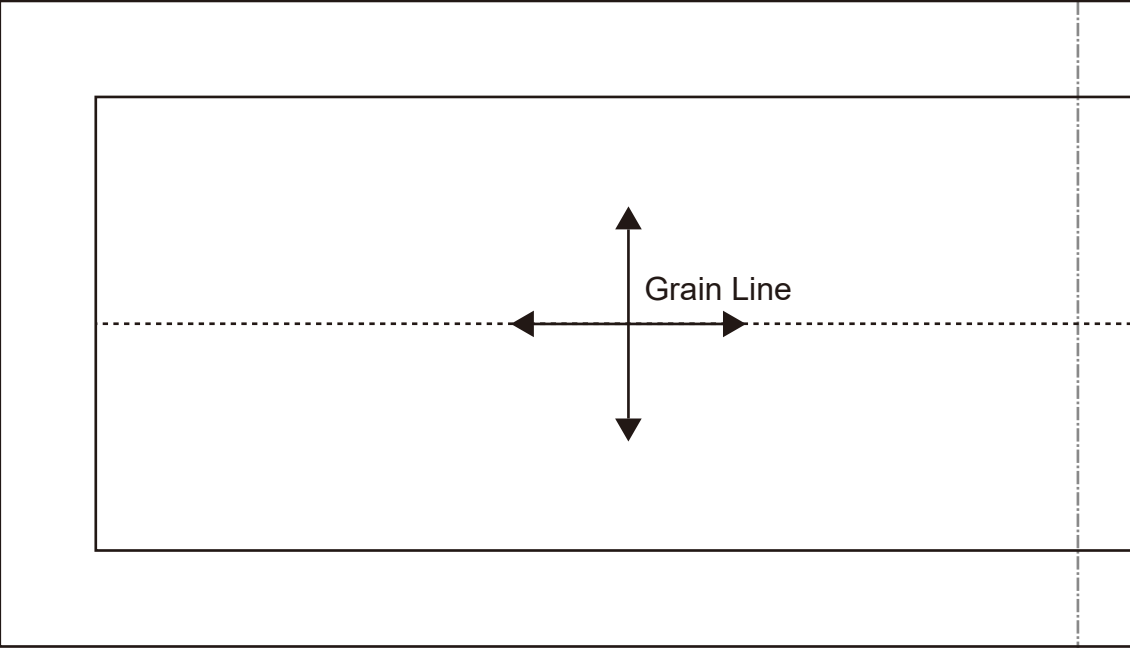
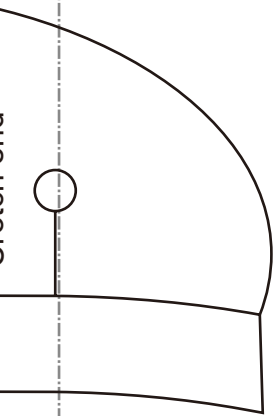
Bonding line Bb

Bonding line Bc

Bonding line CB

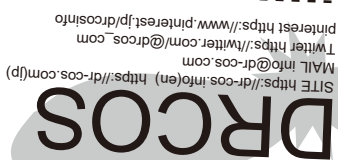
Sew double-stitch





Bonding line DA

Bonding line Bc


  
 SITE <https://dr-cos.info/en> <https://dr-cos.com/fp>
  
 MAIL [info@dr-cos.com](mailto:info@dr-cos.com)
  
 Twitter <https://twitter.com/dr-cos.com>
  
 Pinterest <https://www.pinterest.jp/drcosinfo>

Seam allowance 1/2in.

Bonding line DB

Bonding line Bd

Bonding line DB

Bonding line Cc

Bonding line Cd

**DRCOS**

SITE [https://dr-cos.info\(en\)](https://dr-cos.info(en)) [https://dr-cos.com\(jp\)](https://dr-cos.com(jp))  
MAIL [info@dr-cos.com](mailto:info@dr-cos.com)  
Twitter [@drcos\\_com](https://twitter.com/@drcos_com)  
pinterest <https://www.pinterest.jp/drcosinfo>

LADIES'S M  
SIZE



Cargopants  
Fly extention  
Interfacing  
cut: one

Crotch end



Seam allowance 1/2in.

Bonding line DC

LADIES' size M

Seam

Bonding line Ad

Bonding line Ae

LADIES' size M

Bonding line EA

Bonding line EA

Cargopants  
Back Bodice  
(lower part)  
cut two



Bonding line Bd

Bonding line Be

Seam allowance 1in.

Bonding line EB



# Cargopants Waist Band Interfacing cut one

Seam allowance 1/2in.

Bonding line Ae



Bonding line Af

Bonding line FA

LA

Bonding line Be

Seam allowance 1/2in.

Bonding line FA

Bonding line Bf

Bonding line FB

**DRCOS**

SITE <https://dr-cos.info/en> <https://dr-cos.com/jp>  
MAIL [info@dr-cos.com](mailto:info@dr-cos.com)  
Twitter [https://twitter.com/drcos\\_com](https://twitter.com/drcos_com)  
pinterest <https://www.pinterest.jp/drcosinfo>

extension

Bonding line Af

**DRCOS**

SITE <https://dr-cos.info/en> <https://dr-cos.com/jp>  
MAIL [info@dr-cos.com](mailto:info@dr-cos.com)  
Twitter [https://twitter.com/drcos\\_com](https://twitter.com/drcos_com)  
pinterest <https://www.pinterest.jp/drcosinfo>

**LADIES'** size **M**

Bonding line GA



Bonding line GA

Cargopants  
Back Bodice  
(lower part)  
cut two



Grain Line

Bonding line Bf

Seam allowance 1/2in.

Seam allowance 1in.

Bonding line GB