

[Home](#)
[Back to Blousonhoodie page](#)



Crain Line

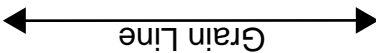
Bonding line Aa

Bonding line AA

Bonding line AA

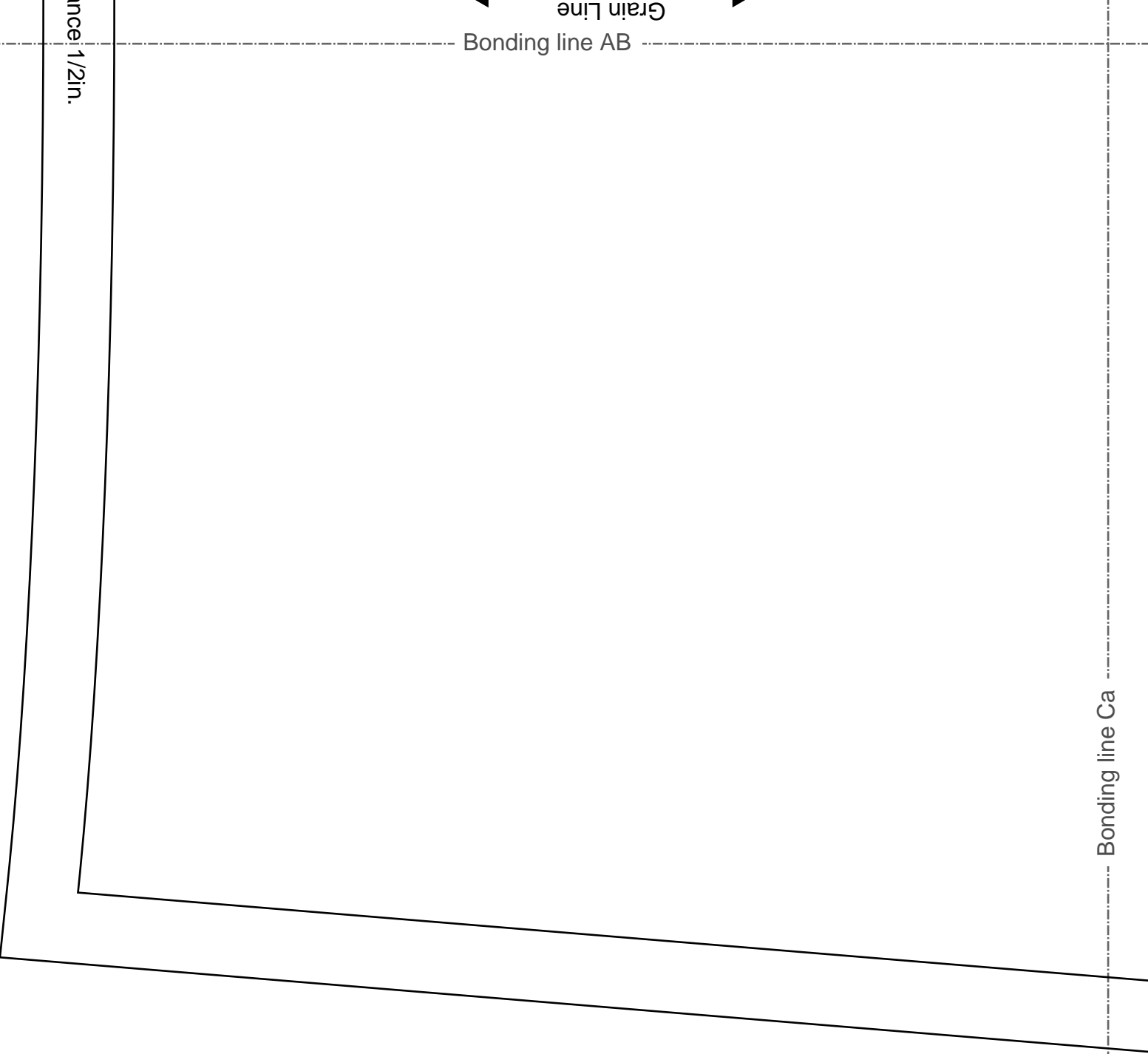
Bonding line Ba

Seam allowance 1/2"



Bonding line AB

Bonding line AB

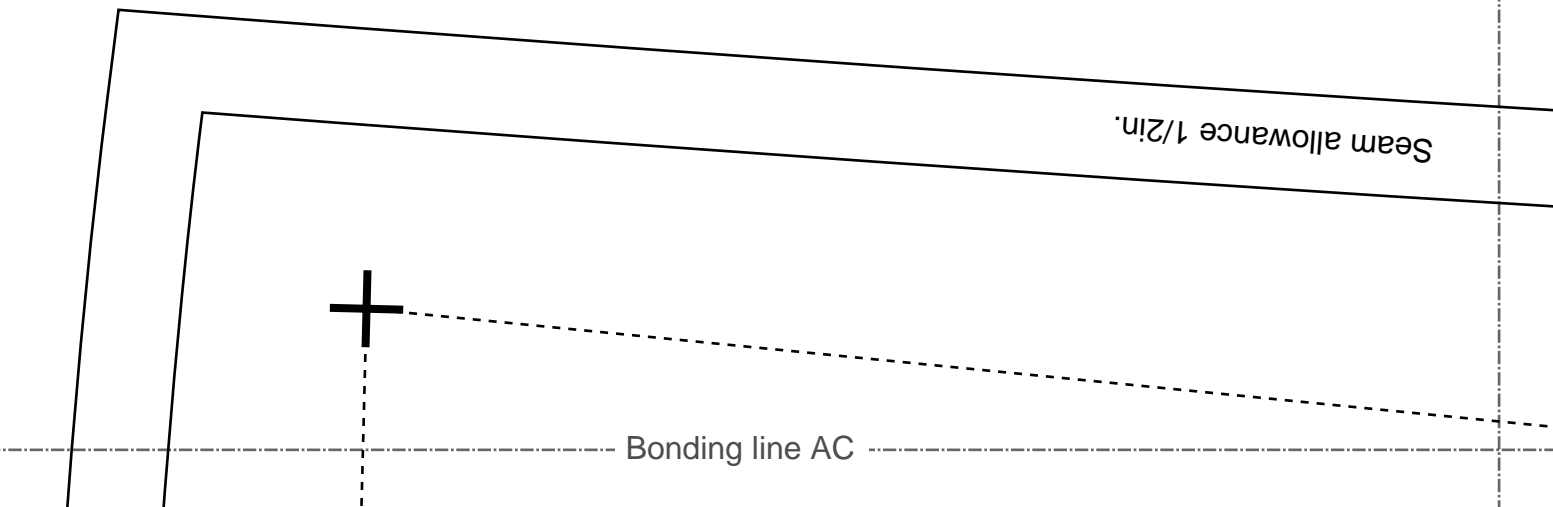


nce 1/2in.

Bonding line Ca

Seam allowance 1/2in.

Bonding line AC



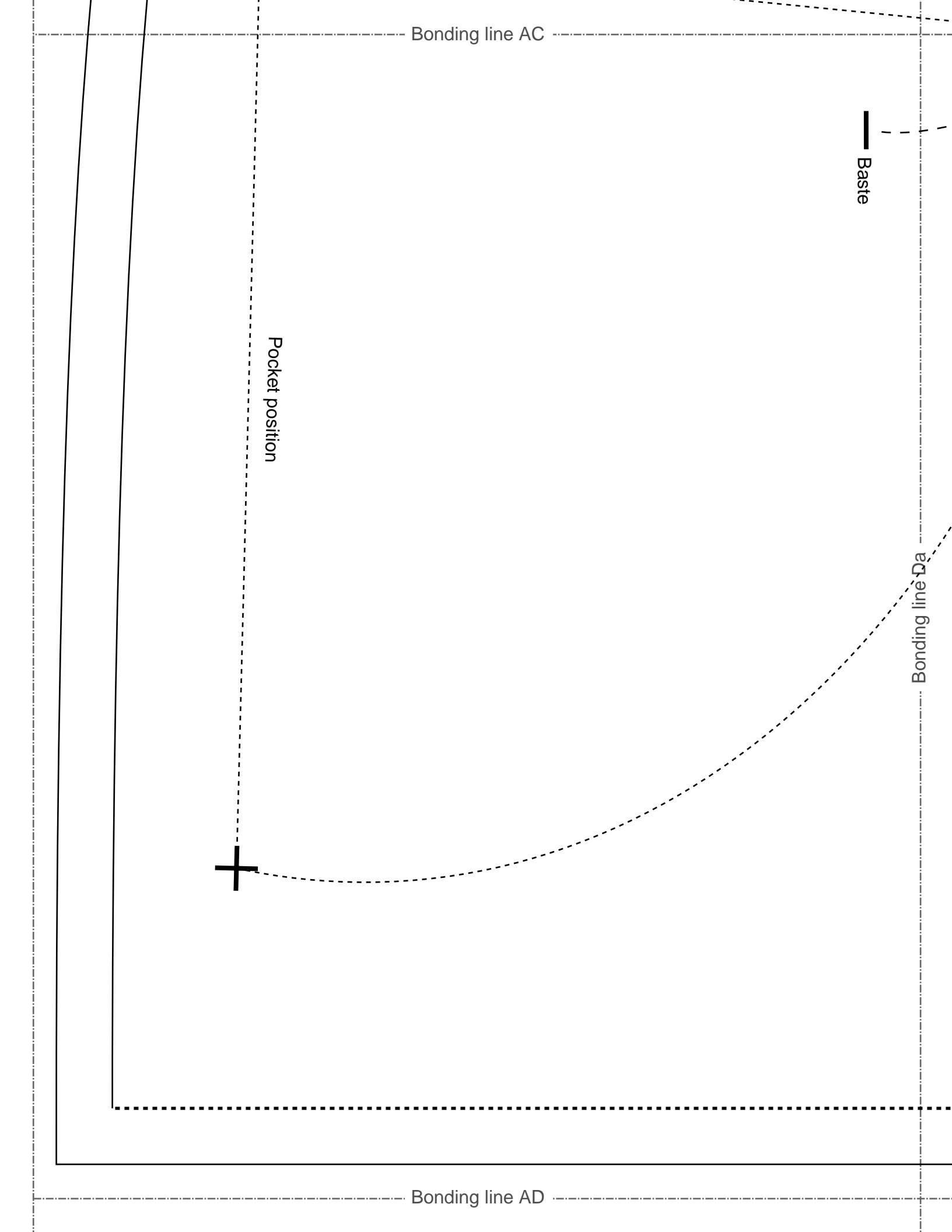
Bonding line AC

Baste

Pocket position

Bonding line Da

Bonding line AD



MEN'S

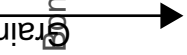


Blousonhoodie
Back Body
one sheets



Bonding line BA

Bonding line Aa



Bonding line BA

Seam allowance 1/2in.

Bonding line Ba

Bonding line Bb

Blousonhood
Sleeve
two sheets

Bonding line BB

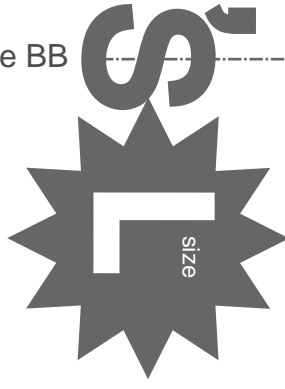
MEN'S

Bonding line Ca

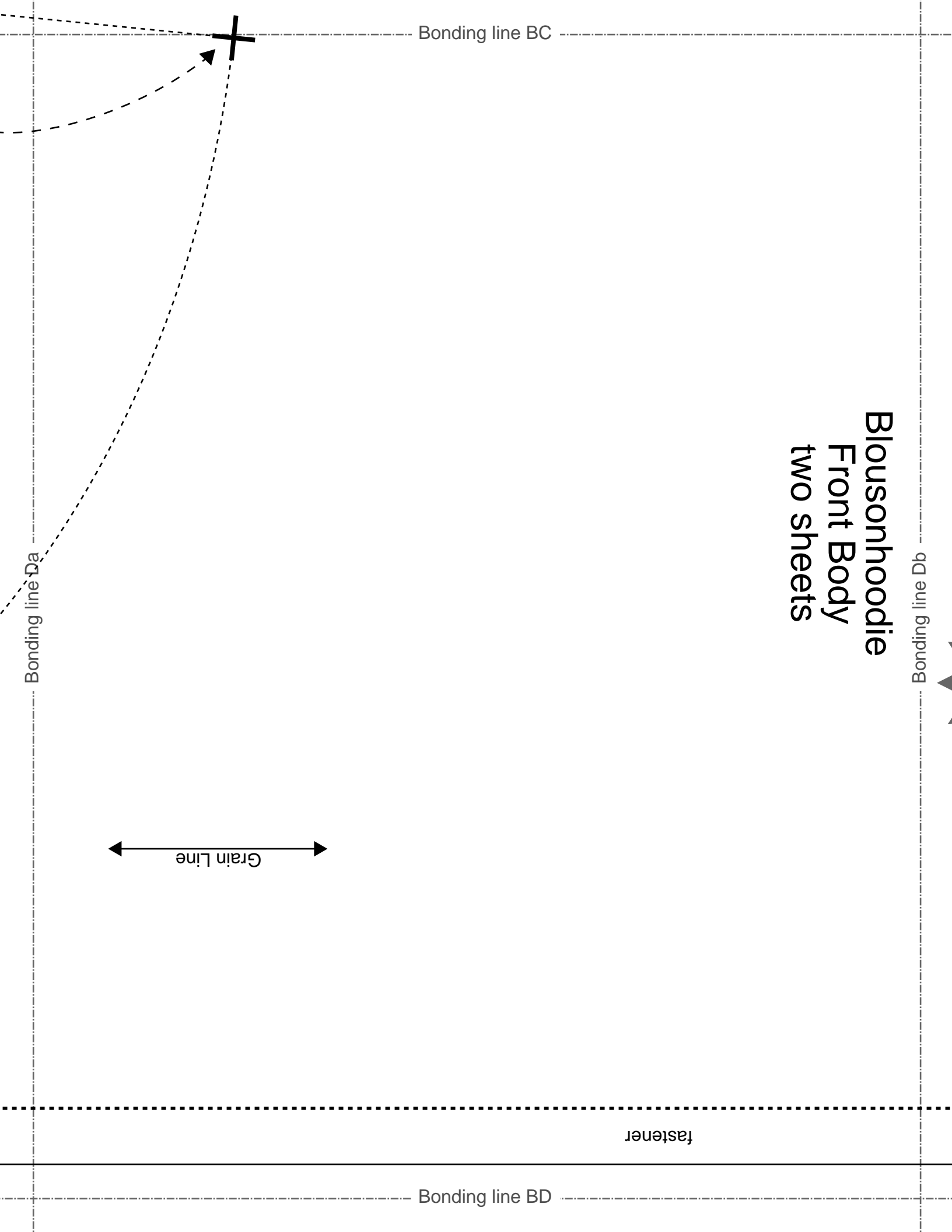
Bonding line BC

Bonding line Cb

sets
ve
nodie
Bonding line BB



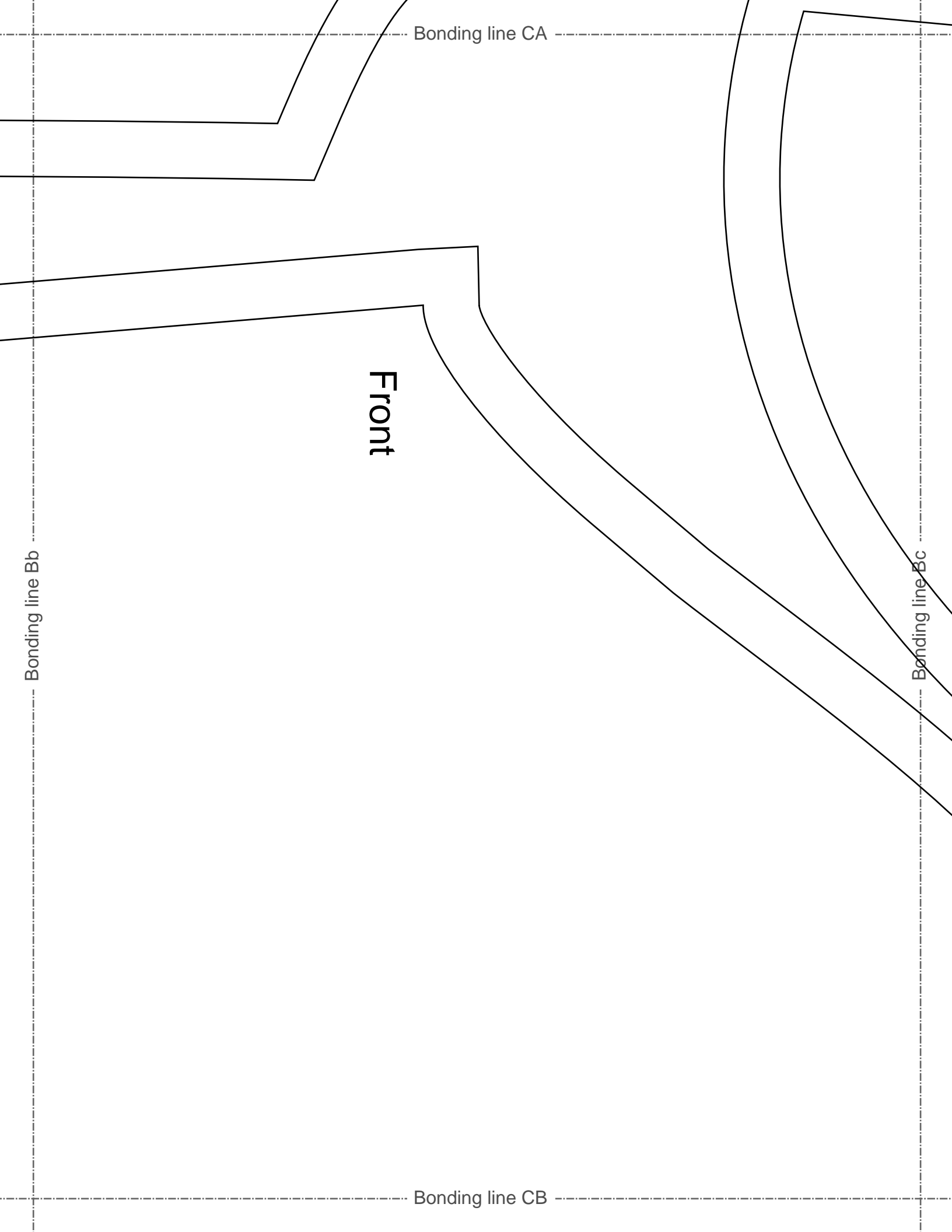
Blousonhoodie
Front Body
two sheets



size MEN'S T-SHIRT

Bonding line CA

Bonding line Ac



Bonding line CA

Front

Bonding line Bb

Bonding line Bc

Bonding line CB

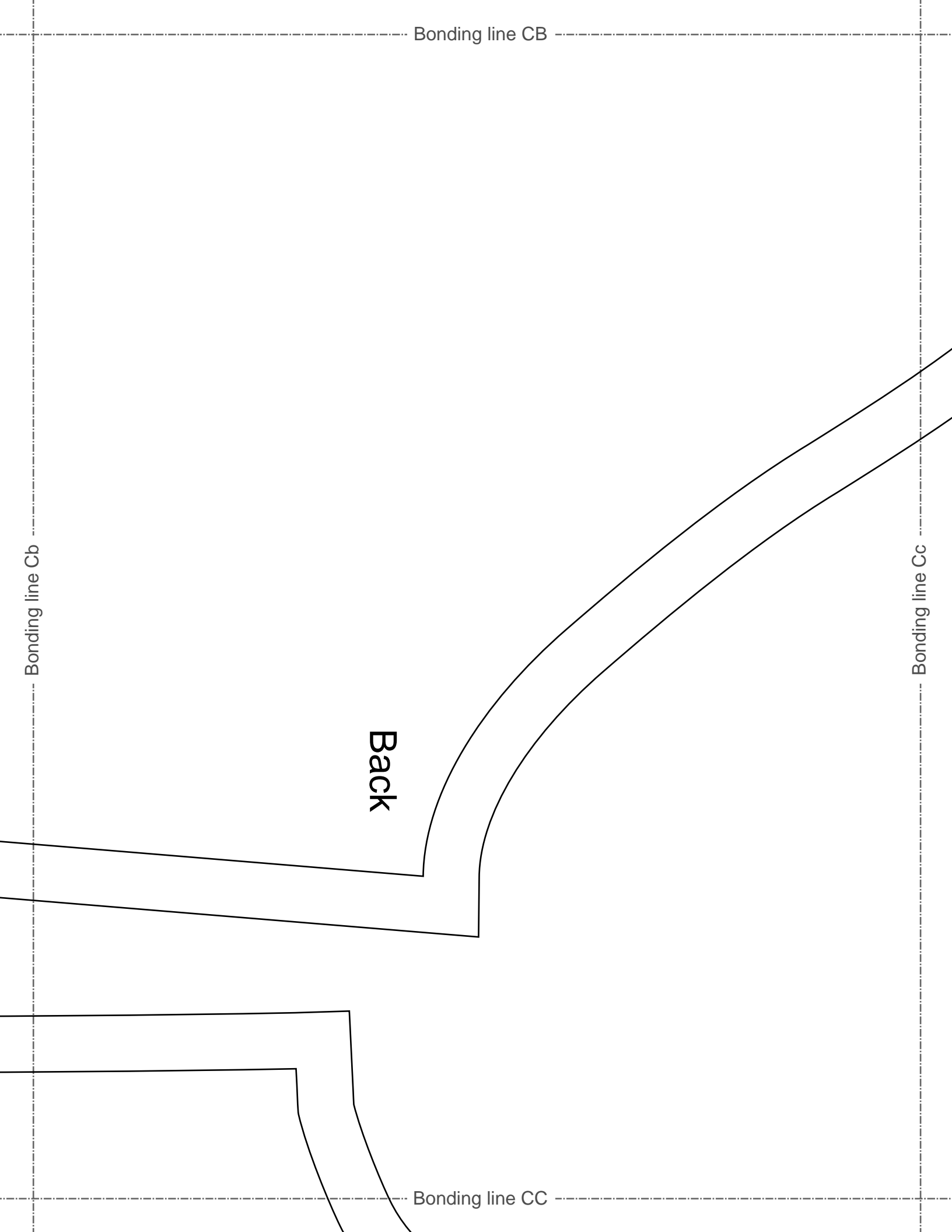
Bonding line CB

Bonding line Cb

Bonding line Cc

Back

Bonding line CC



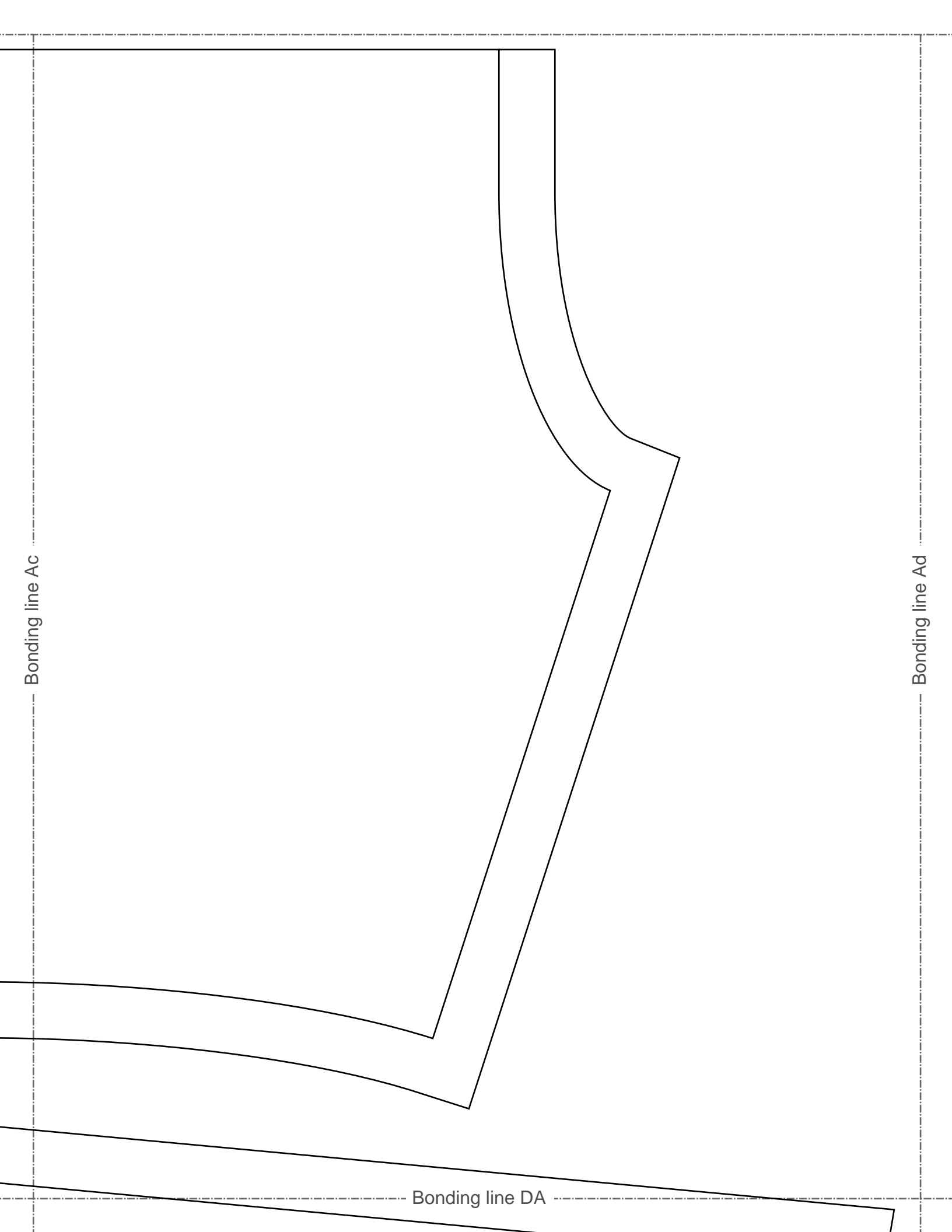
Bonding line CC

Bonding line Db



Bonding line Dc

Bonding line CD



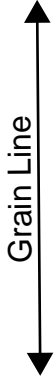
Bonding line Ac

Bonding line Ad

Bonding line DA

Bonding line DA

DRCOS
SITE <http://dr-cos.info/en> [http://dr-cos.com\(jp\)](http://dr-cos.com/jp)
MAIL info@dr-cos.com
Twitter https://twitter.com/dr-cos_com
facebook <https://www.facebook.com/drcoscom>



Blousonhodie
Pocket
two sheets

MEN'S
size **L**

Seam allowance 1/2in.

Bonding line Bc

Bonding line Bd

Bonding line DB

DRCOS
SITE <http://dr-cos.info/en> [http://dr-cos.com\(jp\)](http://dr-cos.com/jp)
MAIL info@dr-cos.com
Twitter https://twitter.com/dr-cos_com
facebook <https://www.facebook.com/drcoscom>

Bonding line DB

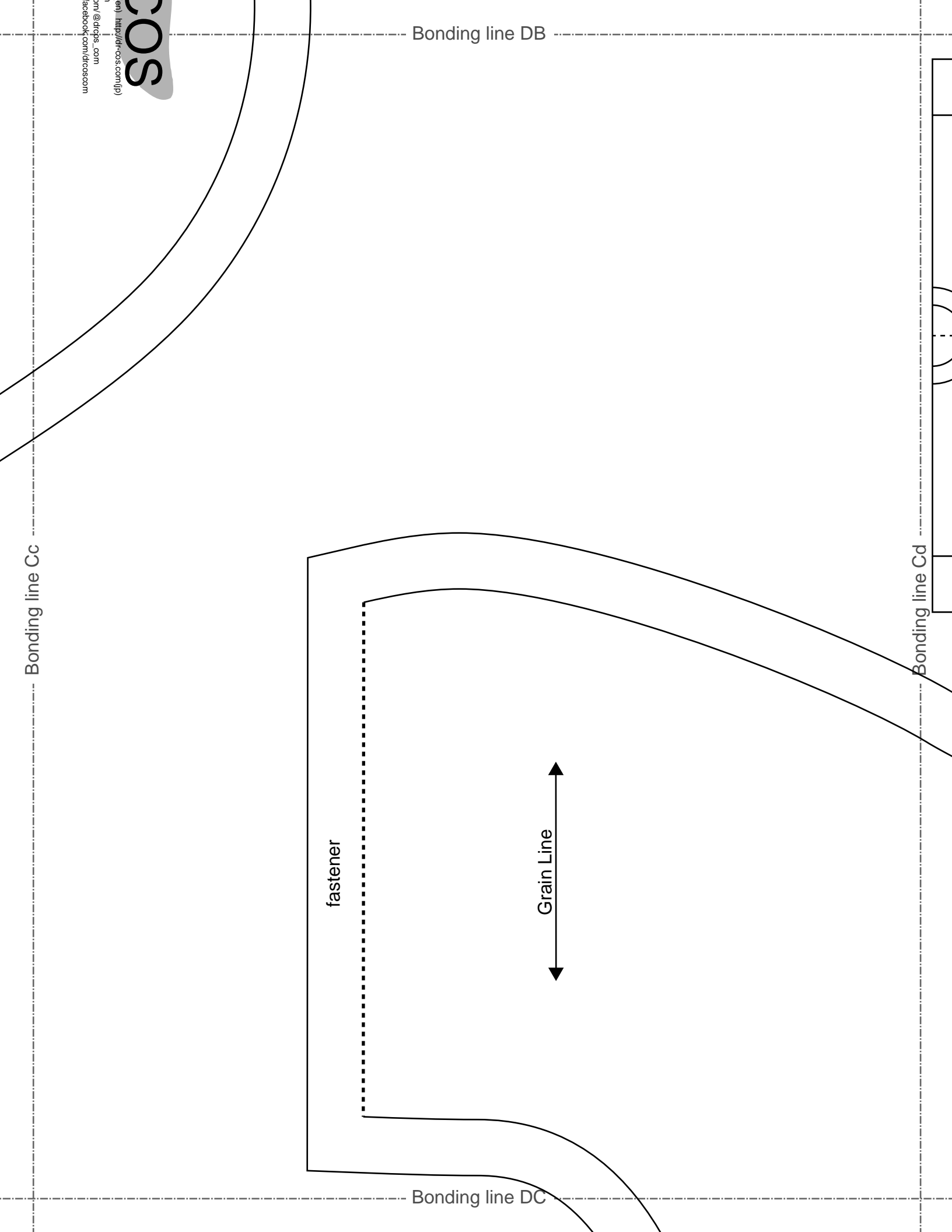
Bonding line Cc

Bonding line Cd

fastener

Grain Line

Bonding line DC



Bonding line DC

Bonding line Dc

SITE <http://dr-cos.info/en> | <http://dr-cos.com/fp>
MAIL info@dr-cos.com
Twitter <https://twitter.com/@dr-cos>
facebook <https://www.facebook.com/drcoscom>

DRCOS

Bonding line Dd

<https://www.facebook.com/drcoscom>
<https://twitter.com/@dr-cos>
<https://www.facebook.com/drcoscom>

RCS

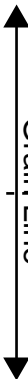
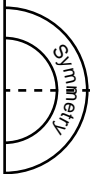
Bonding line DD

Bonding line EB

Bonding line Cd

Bonding line Ce

Bonding line EC



Seam allowance 1/2 in.

Bonding line EC

Seam

Blousonhodie
Hood
two sheets



Bonding line Dd

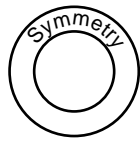
Bonding line De

DRC
SITE <http://dr-cos.info/en>
MAIL info@dr-cos.com
Twitter <https://twitter.com/dr-cos>
facebook <https://www.facebook.com/dr-cos>

Bonding line ED

Bonding line FB

MEN'S **L** size

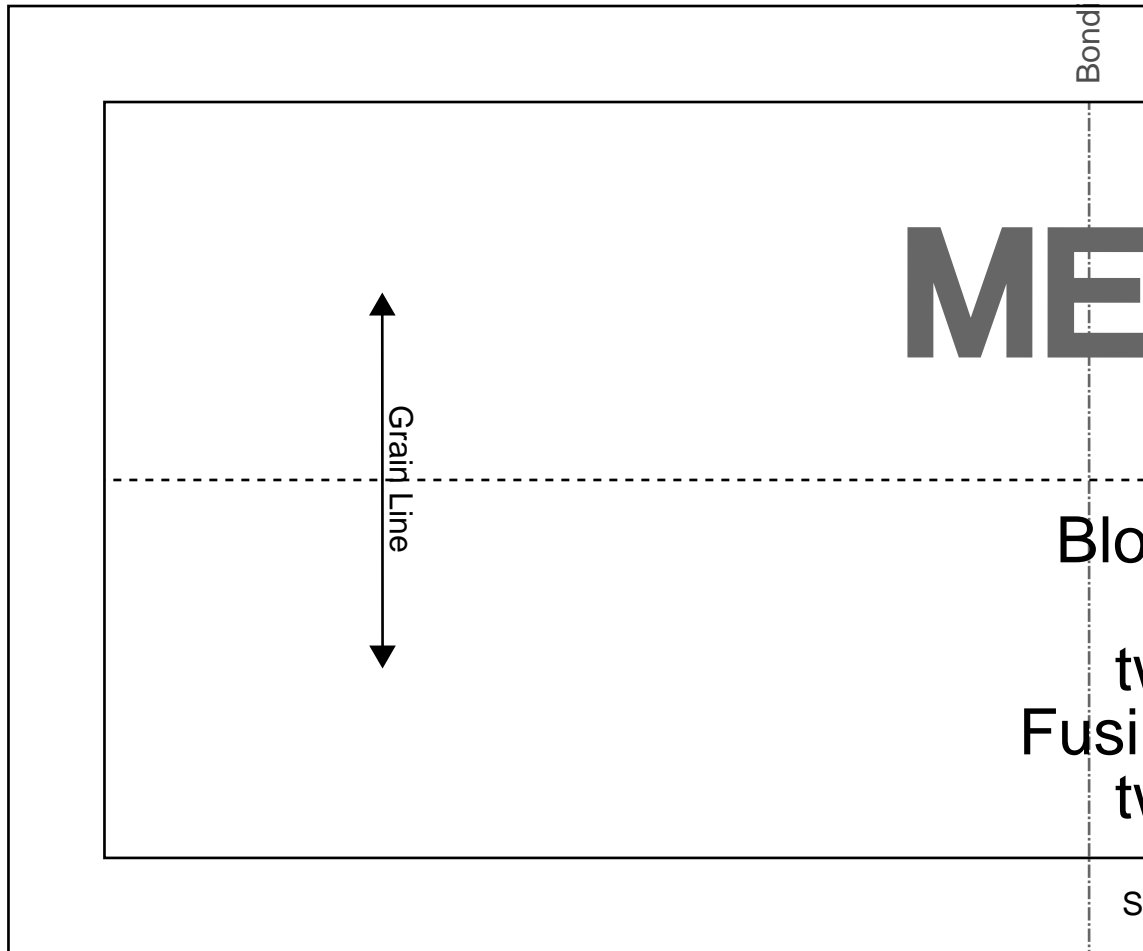


Blousonhoodie
Hem rib
one sheets

Seam allowance 1/2in.

Bonding line Ce

Bonding line Cf



Bonding line FC

Blo
ty
Fusi
ty
s

DRCOS

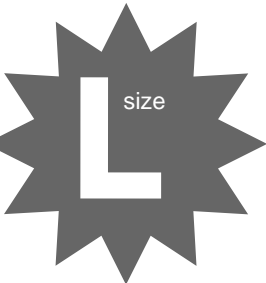
SITE [http://dr-cos.info\(en\)](http://dr-cos.info(en)) [http://dr-cos.com\(jp\)](http://dr-cos.com(jp))

MAIL info@dr-cos.com

Twitter https://twitter.com/@drcos_com

facebook <https://www.facebook.com/drcoscom>

Bonding line Cf

WOMEN'S  **L** size

Blousonhoodie
Cuffs
two sheets
Fusible interlining
two sheets

DRCOS

SITE [http://dr-cos.info\(en\)](http://dr-cos.info(en)) [http://dr-cos.com\(jp\)](http://dr-cos.com(jp))

MAIL info@dr-cos.com

Twitter https://twitter.com/@drcos_com

facebook <https://www.facebook.com/drcoscom>

Seam allowance 1/2in.