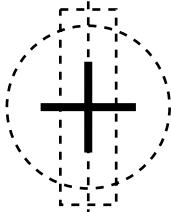
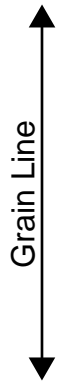


[Home](#)

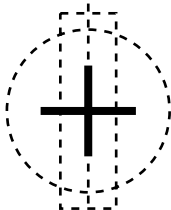
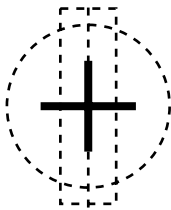
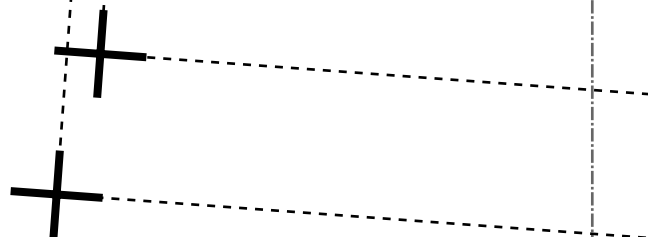
[Back to Jacketshortcoat page](#)



Bonding line AA

Bonding line Aa

Bonding line AA

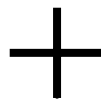


line Ba



size

Pocket position

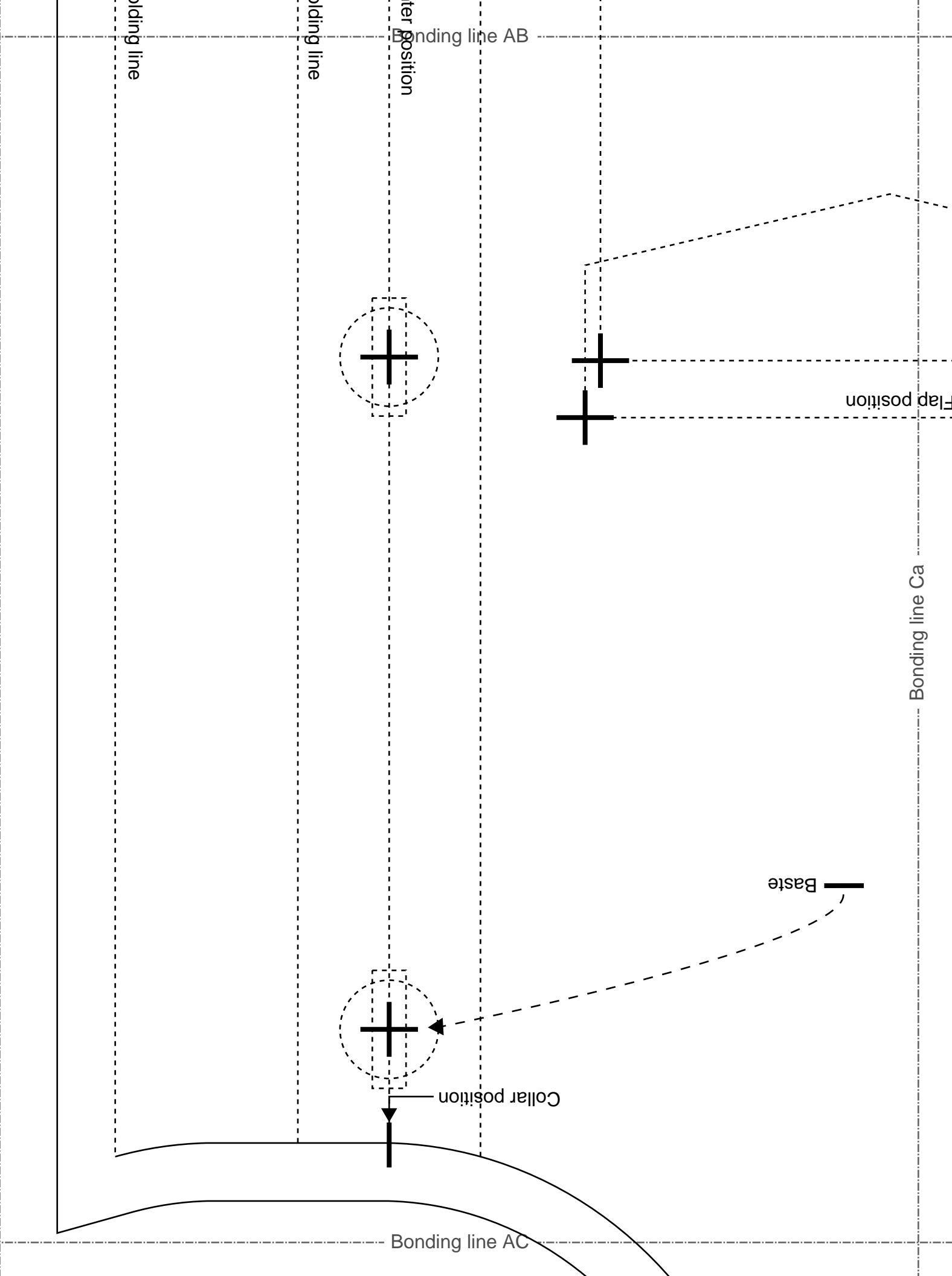


Center posit

Bonding line AB

Folding lin

Folding lin

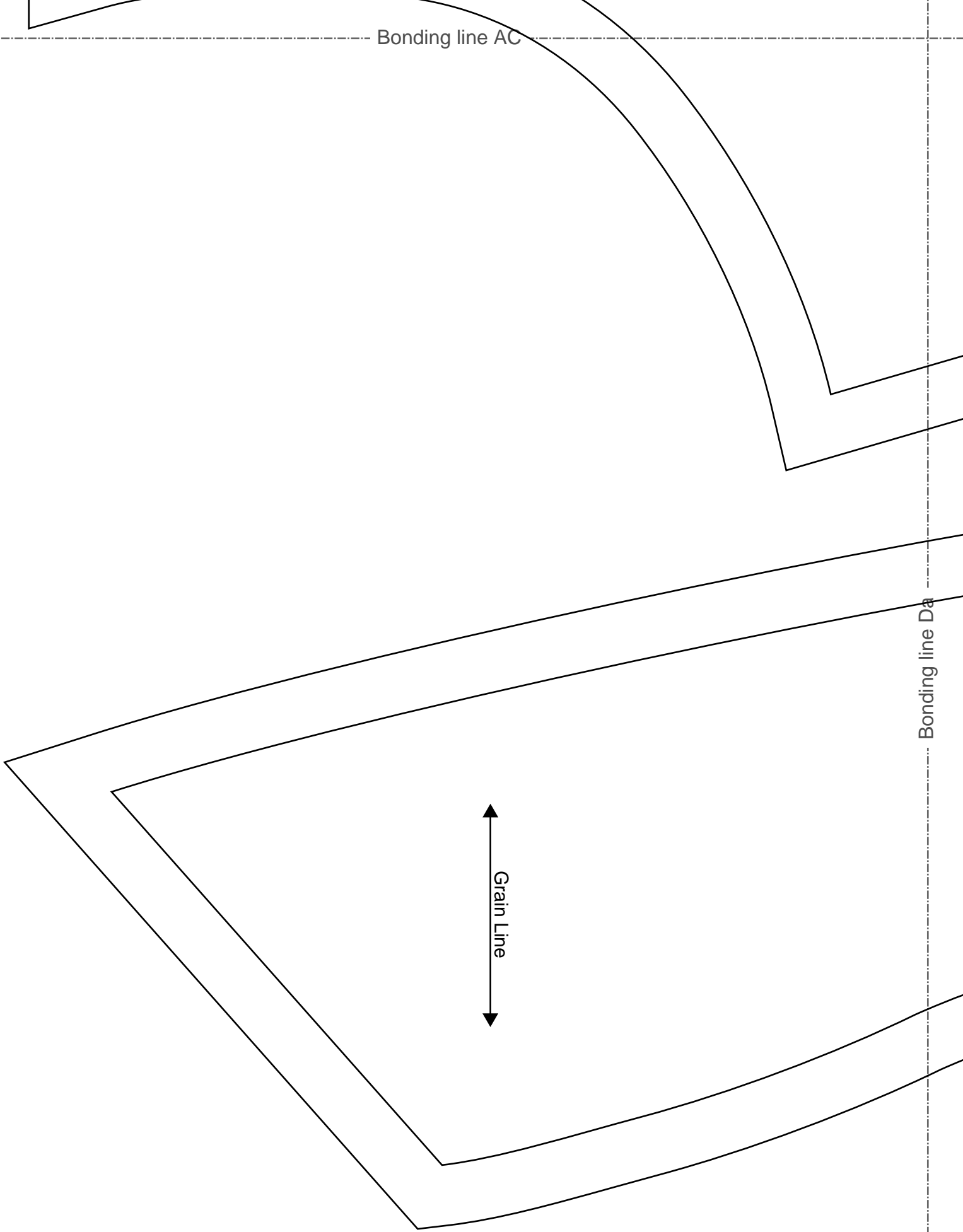


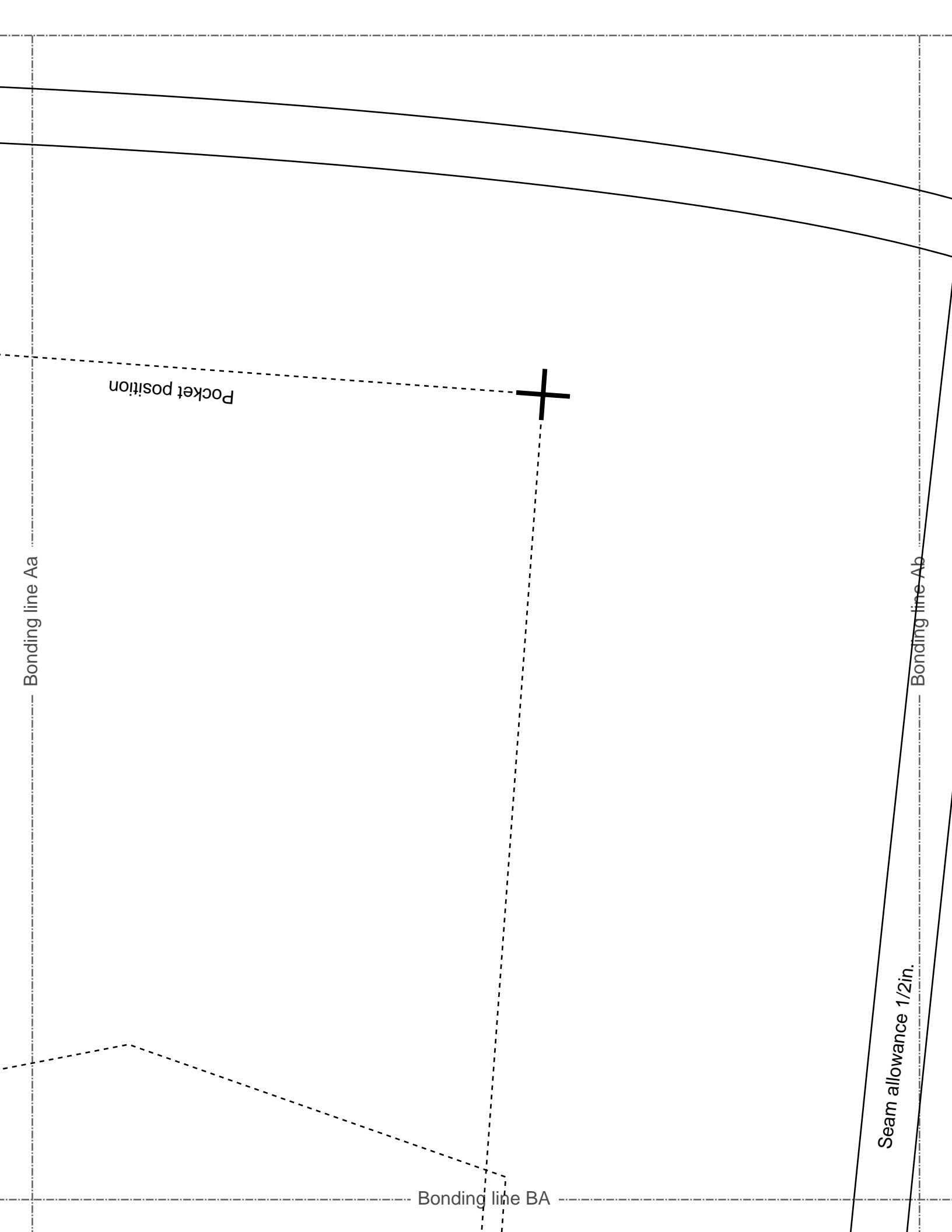
Bonding line AC

Bonding line Da

Grain Line

Bonding line AD





Bonding line BA

Flap position



Jacketshortcoat
Front Body
two sheets

line Ba

MEN'S **TL**

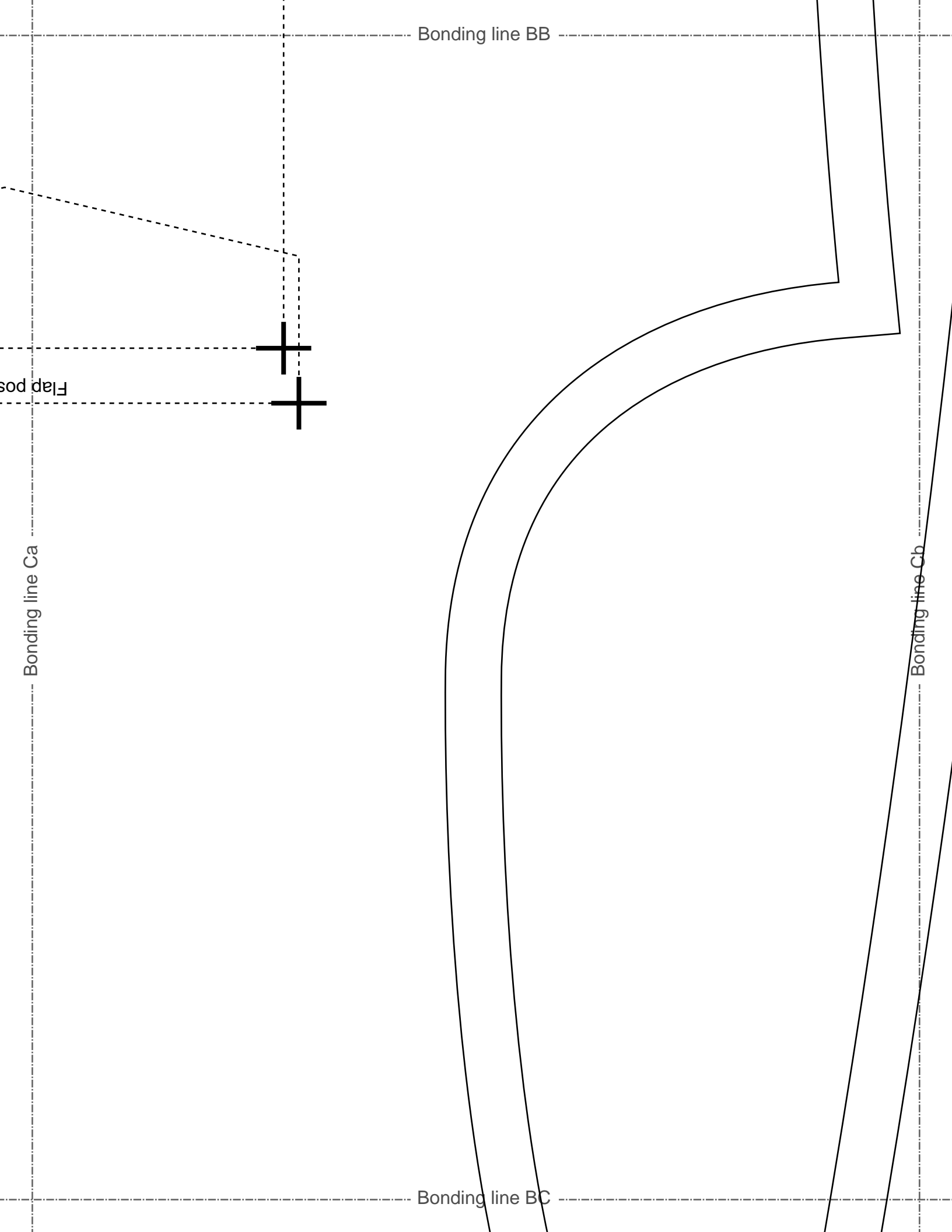
size

Pocket p



Bonding line BB

Bonding line Bb



Bonding line BC

DRCOS
 SITE [http://dr-cos.info\(en\)](http://dr-cos.info/en) [http://dr-cos.com\(fp\)](http://dr-cos.com(fp))
 MAIL info@dr-cos.com
 Twitter https://twitter.com/dr-cos_com
 Facebook <https://www.facebook.com/drcoscom>

Bonding line Da

MEN'S **LL** size


Bonding line Db

Jacketshort
 Collar
 two sheet
 Fusible interl
 one sheet

Seam allowance 1/2in.

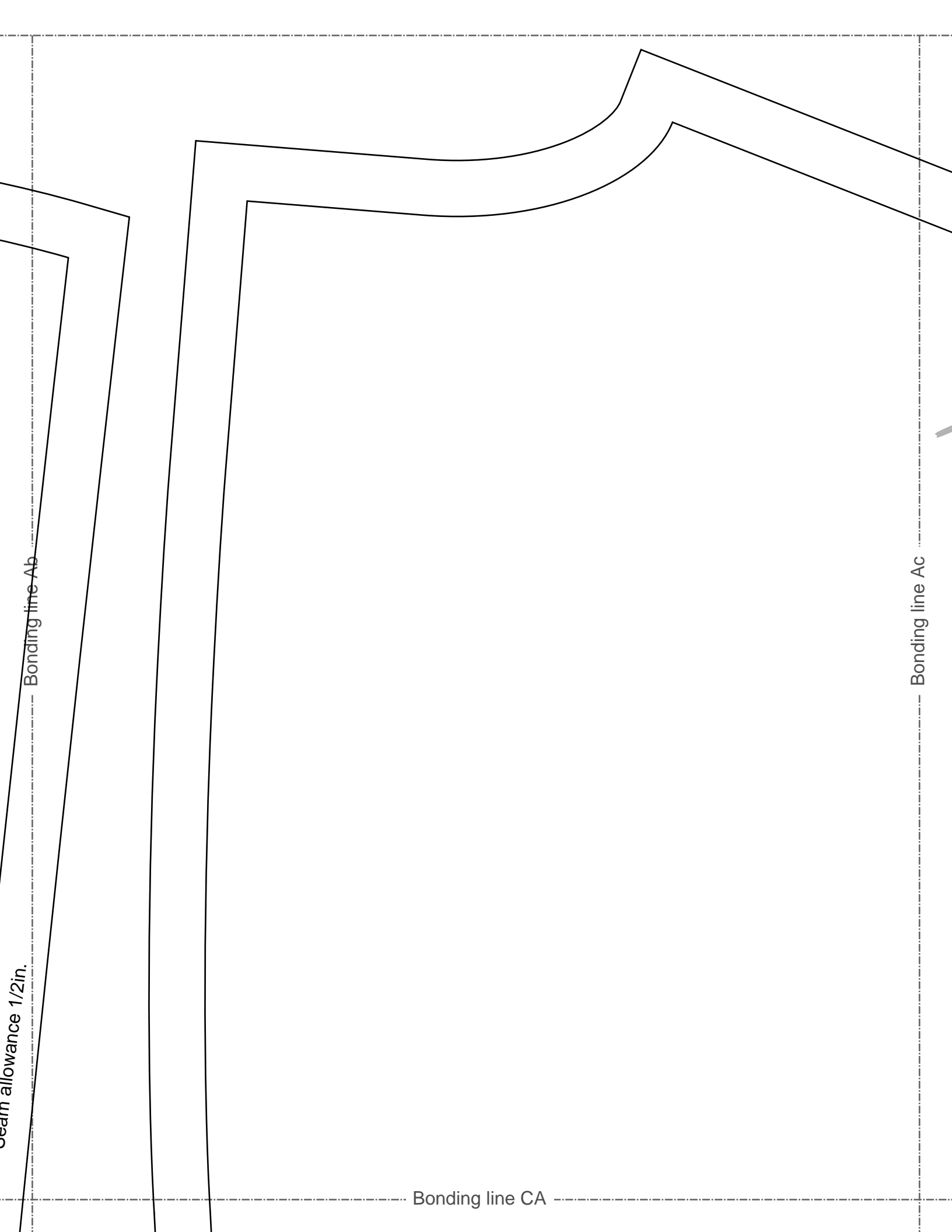
Bonding line BD

Seam allowance 1/2in.

Bonding line Ab

Bonding line CA

Bonding line Ac



Bonding line CA

Bonding line Bb

MEN'S

Jacketshortcoat
Back Body
two sheets

Bonding line

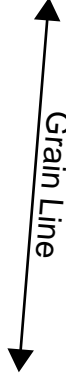
Bonding line CB

Bonding line CB

Bonding line CC

Bonding line Cb

Bonding line Cc



Bonding line CC

Bonding line Db
Shortcoat
collar
sheets
interlining
sheets

Bonding line Dc

Bonding line CD



DRCOS
SITE <http://dr-cos.info/en> <http://dr-cos.com/jp>
MAIL info@dr-cos.com
Twitter [@drcos_com](https://twitter.com/@drcos_com)
facebook <https://www.facebook.com/drcoscom>

DRCOS

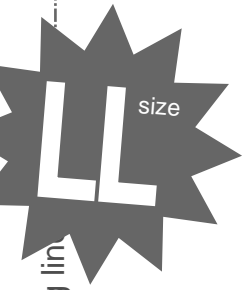
SITE <http://dr-cos.info/en> <http://dr-cos.com/jp>
MAIL info@dr-cos.com
Twitter https://twitter.com/drcos_com
facebook <https://www.facebook.com/drcoscom>

Bonding line Ac

Bonding line Ad

Bonding line DA

Bonding line DA



Bonding line
Daf

Bonding line DB

Bonding line Bd

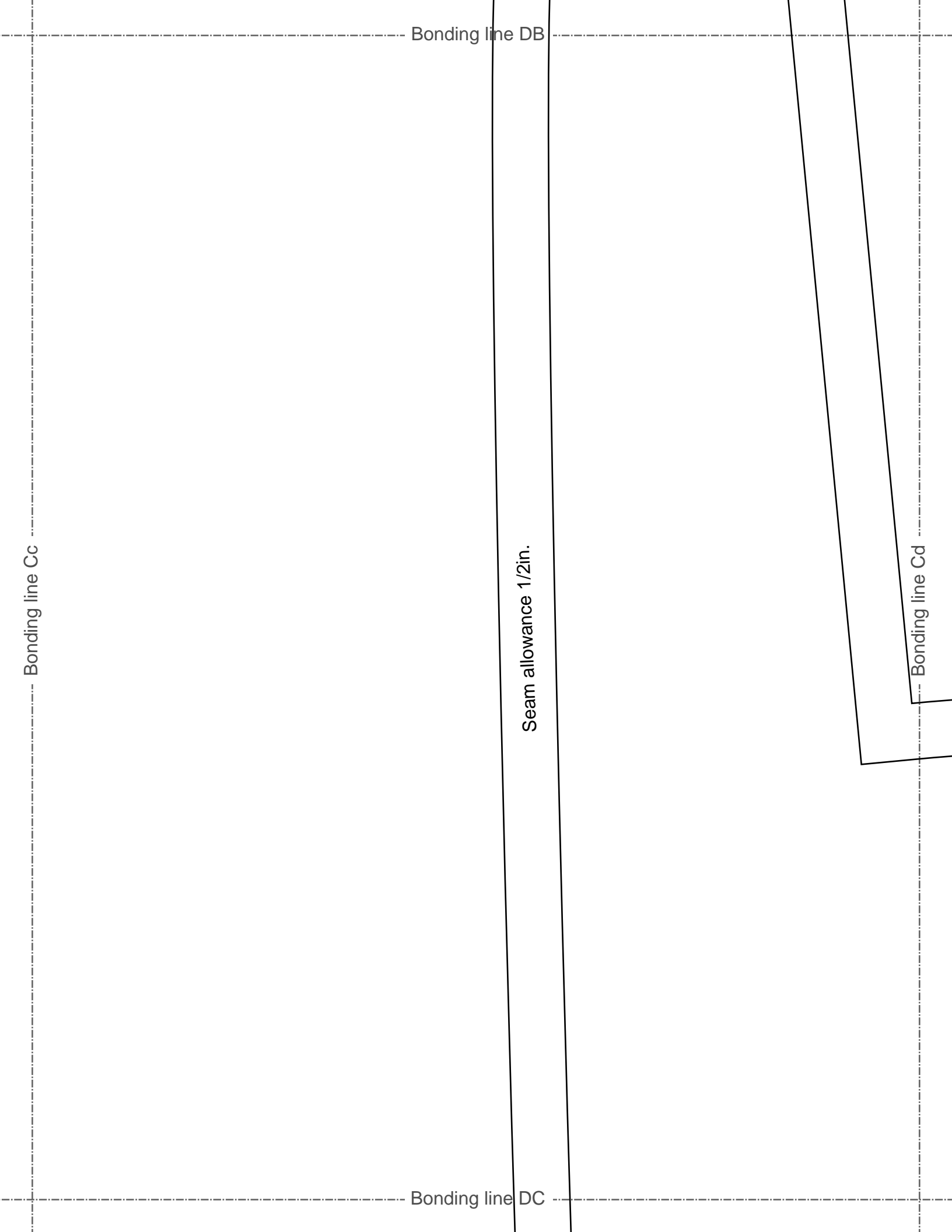
Bonding line Cc

Bonding line DB

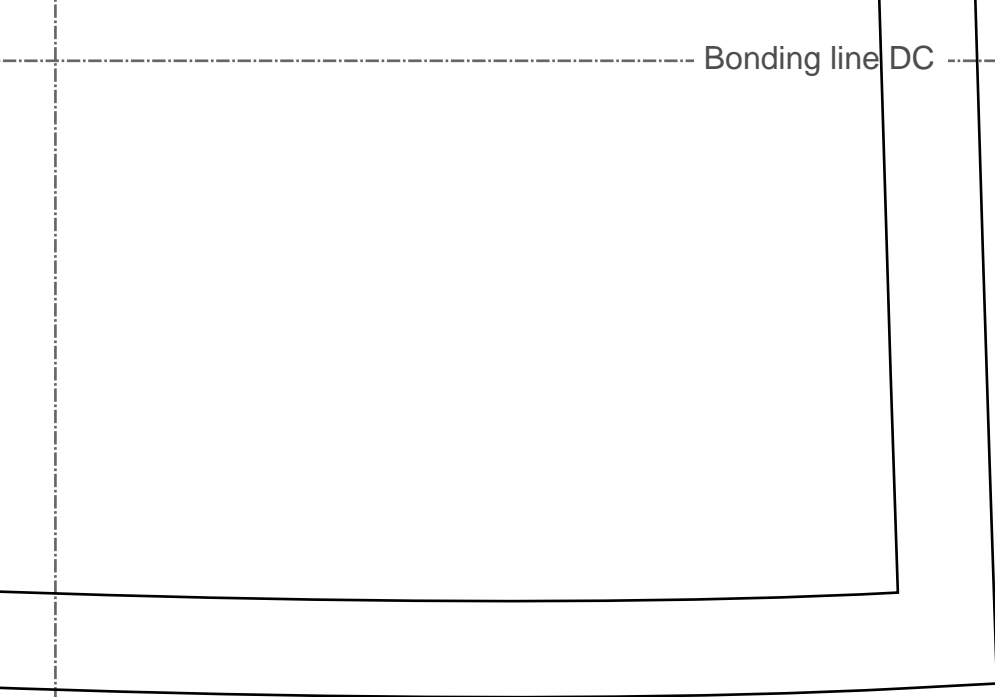
Seam allowance 1/2in.

Bonding line DC

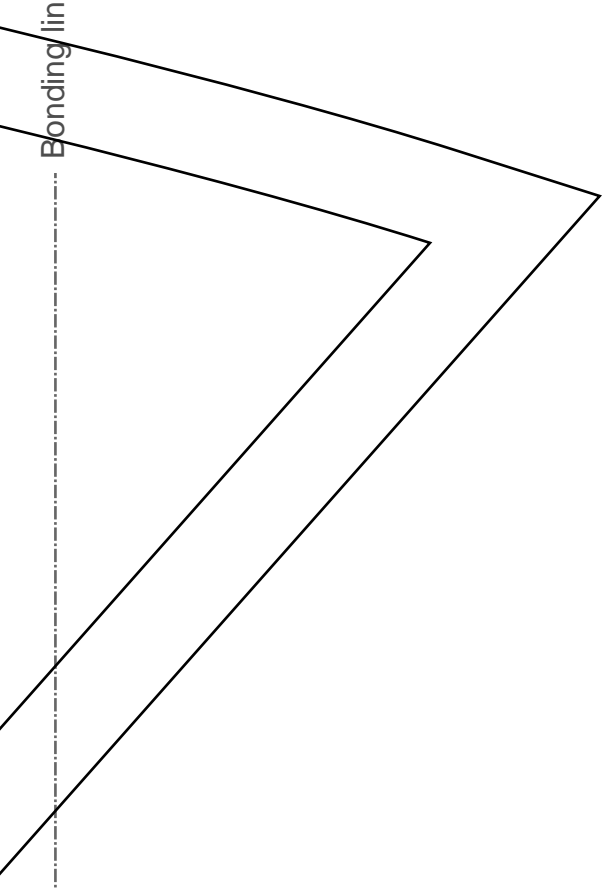
Bonding line Cd



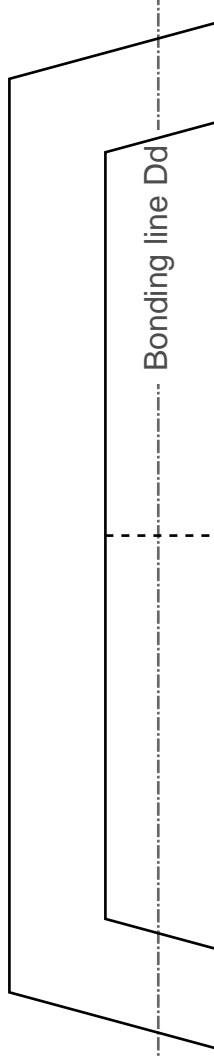
Bonding line DC



Bonding line Dc



Bonding line Dd



Bonding line DD



DRCOS

SITE [http://dr-cos.info\(en\)](http://dr-cos.info(en)) [http://dr-cos.com\(jp\)](http://dr-cos.com(jp))

MAIL info@dr-cos.com

Twitter https://twitter.com/drcos_com

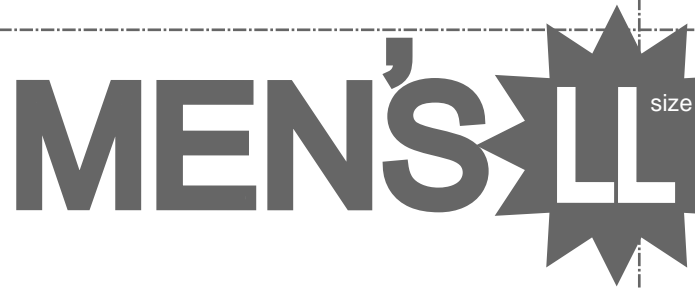
facebook <https://www.facebook.com/drcoscom>

Bonding line Ad

Bonding line Ae

Bonding line EA

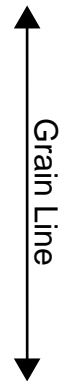
Bonding line EA



Jacketshortcoat
Sleeve
two sheets

Bonding line Bd

Bonding line Be



Bonding line EB

Bonding line EB

Bonding line Cd

Bonding line Ce

Seam allowance 1/2in.

DRCOS
SITE <http://dr-cos.info/en> <http://dr-cos.com/jp>
MAIL info@dr-cos.com
Twitter https://twitter.com/drcos_com
facebook <https://www.facebook.com/drcoscom>

MEN'S  **LL** size

Bonding line EC

locketchertocot

Bonding line EC

Jacketshortcoat
Breast pocket
two sheets

Seam allowance 1/2in.

Bonding line Dd

MEN'S  **LL** size

Bonding line De

Jacketshortcoat
Flap
two sheets

DRCOS

SITE [http://dr-cos.info\(en\)](http://dr-cos.info(en)) [http://dr-cos.com\(jp\)](http://dr-cos.com(jp))
MAIL info@dr-cos.com
Twitter [@drcos_com](https://twitter.com/@drcos_com)
facebook <https://www.facebook.com/drcoscom>

Seam allowance 1/2in.

Bonding line ED

MEN'S  **LL** size

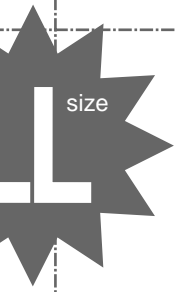
Jacketshortcoat
Breast flap
two sheets

Seam allowance 1/2in.

Bonding line Ae

Bonding line Af

Bonding line FA

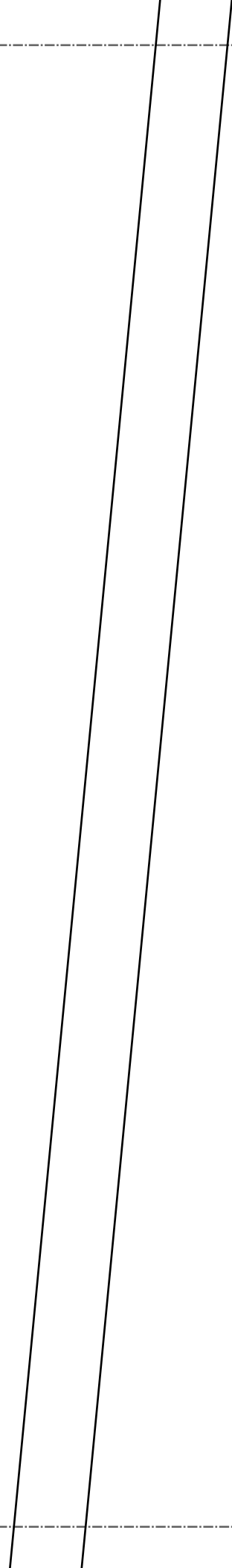


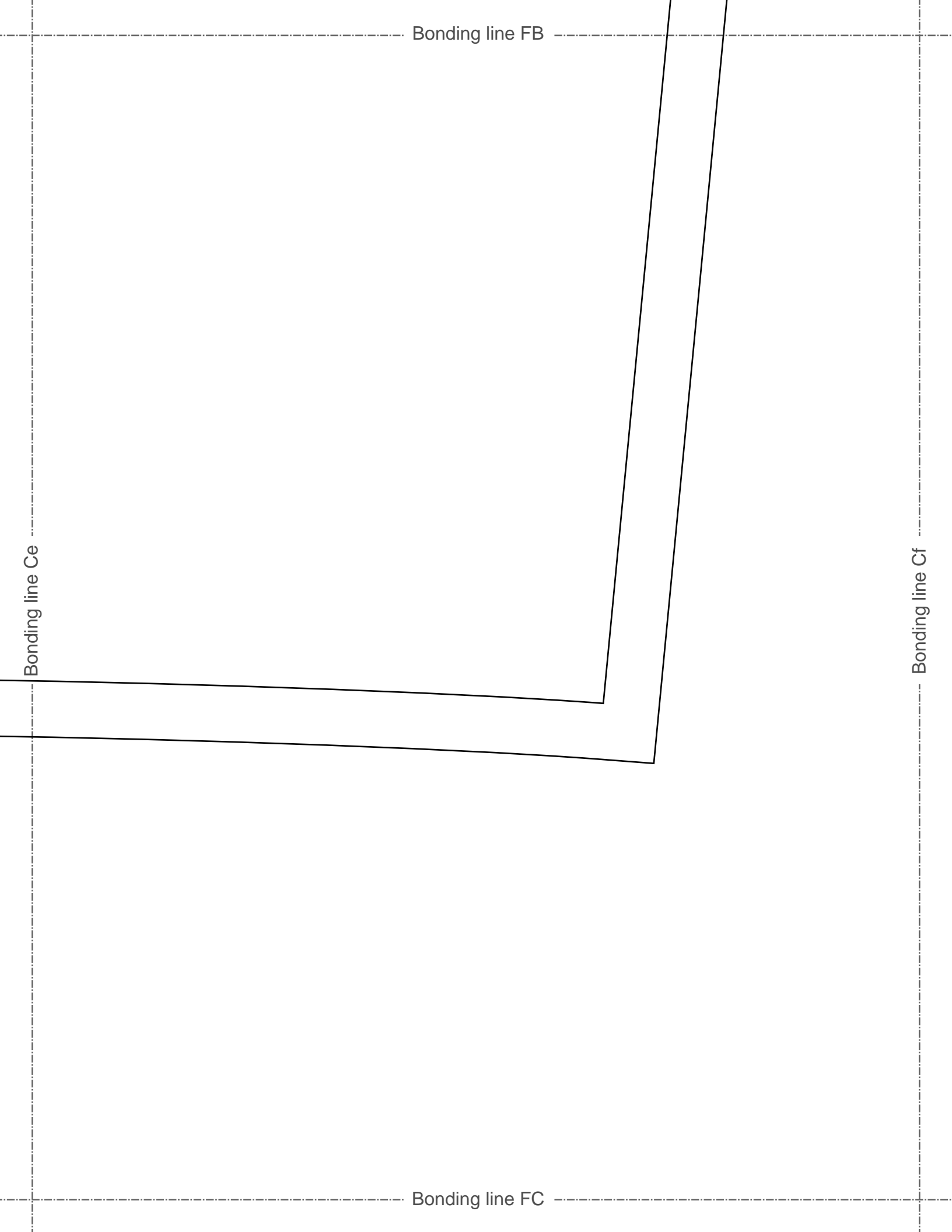
Bonding line FA

Bonding line Be

Bonding line Bf

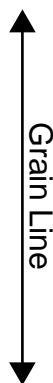
Bonding line FB







MEN'S size



Jacketshortcoat
Pocket
two sheets

Seam allowance 1/2in.